



Expertise

Protocol number: 41163726  
Order No. / Reference: 25082816  
Inspection date: 18 Aug 2025

Manufacturer: Mercedes-Benz

Model: GLA 220 d 8G-DCT Progressive

VIN: W1N2477141J282877



Vehicle details	
Manufacturer / Type / Model / Equipment	
Mercedes-Benz GLA 220 d 8G-DCT Progressive	
Vehicle Identification number	W1N2477141J282877
Mileage (Read)	73,817 km
First registration	20 Apr 2021
Number of holders	1
Next periodical technical inspection	06/2026
(Report not on hand)	
Power / Engine displacement	140 kw / 1,950 ccm
Fuel type / Cylinder	Diesel / 4
Gearbox / Number of gears	Automatic / 8
Type of drive	Front drive
Type of vehicle	SUV
Colour / colour code	IRIDIUM-SILBER - METALLICLACK
Doors / Seats	5 / 5
Upholstery type	Artificial leather
Colour of upholstery	Black-Anthracite



## Vehicle details

<b>Maintenance booklet / proof</b>	digital proof / complete	<b>Next maintenance in</b>	310 Tag(e)
<b>Last maintenance on / at</b>	06/2025 at 73,328 km		
<b>Key is / should be</b>	2 / 2	<b>FZG documents</b>	ZB#2 (B) was available (copy), ZB#1 (S) was not available
		<b>Letter No.</b>	GC579908
<b>Previous damage / Accident</b>	Detectable	<b>Repainting</b>	Detectable
<b>Inspection conditions</b>	sufficient	<b>Lifting equipment / pit</b>	yes
<b>Test drive</b>	Not performed	<b>Engine function test</b>	Performed
<b>Manufacturer key number/ type code number</b>	2222 / APV 00025		
<b>Emission standard</b>	EURO6;WLTP;AP;PI/CI; M, N1 I	<b>Fine dust sticker</b>	
<b>Permitted total weight</b>	2,135 kg	<b>Empty weight</b>	

## Tyres

### Mounted tyres

#	Tyre size	Type of tyre	Manufacturer	Tread depth
1)	235/55 R18 100W	Summer tyres on Light alloy	Bridgestone	4mm / 4mm
2)	235/55 R18 100W	Summer tyres on Light alloy	Bridgestone	5mm / 5mm

### Additional tyres

#	Tyre size	Type of tyre	Manufacturer	Tread depth
1)	215/60 R18 102T	Winter tyres on Light alloy	Continental	5mm / 5mm
2)	215/60 R18 102T	Winter tyres on Light alloy	Continental	5mm / 5mm

**Legend:** Tread depth information for tires on the left is in the first place, for tires on the right is in the second place on the axle in the direction of travel

## Equipment

### Standard equipment

- |   |  |
|---|--|
| <ul style="list-style-type: none"> <li>• ADAPTIV BRAKE with HOLD function, hill start assist, pre-filling and dry braking in wet conditions</li> <li>• Airbag: Kneebag for driver</li> <li>• Airbag: Windowbags</li> <li>• Active Lane Keeping Assist</li> <li>• Traction control (ASR)</li> <li>• Automatic passenger airbag deactivation</li> <li>• Exterior mirrors left and right heated, electrically adjustable from the inside</li> <li>• diesel particulate filter</li> <li>• tachometer</li> <li>• DYNAMIC SELECT</li> <li>• Door sills with "Mercedes-Benz" lettering</li> <li>• Chassis: Comfort chassis</li> <li>• Electric parking brake</li> <li>• Luggage net on driver and passenger backrest</li> <li>• Transmission: 8G-DCT dual clutch transmission automatic 8-speed</li> <li>• Illuminated glove compartment</li> <li>• Heated rear window with timer control</li> <li>• ISOFIX child seat anchorages with TopTether in the rear</li> <li>• Mechanical child safety lock</li> <li>• Communication module (LTE) for the use of Mercedes me connect services</li> <li>• Steering wheel: Multifunction sports steering wheel in leather</li> <li>• Steering: parameter steering</li> <li>• Navigation accessories: Advanced functions MBUX</li> <li>• Package: Non-smoking</li> <li>• Upholstery: ARTICO imitation leather/fabric</li> <li>• Radio accessories: Digital radio</li> <li>• Rain-light sensor</li> <li>• Remote Services Plus</li> <li>• Service interval display ASSYST</li> <li>• Seats: Comfort seats</li> <li>• socket (12 V) in center console</li> <li>• High-visibility vest for drivers</li> <li>• Heat-insulating glass, green all around</li> <li>• Decorative elements spiral optics</li> </ul> | <ul style="list-style-type: none"> <li>• Adaptive brake light flashing</li> <li>• Airbag for driver and front passenger</li> <li>• Airbag: Sidebag for driver and front passenger</li> <li>• Active Brake Assist</li> <li>• Anti-lock braking system (ABS)</li> <li>• Armrest in center console for driver and front passenger with integrated storage compartment</li> <li>• Outside temperature display</li> <li>• Roof rails in polished aluminum</li> <li>• Double cup holder</li> <li>• Third brake light in LED technology</li> <li>• ECO start-stop function</li> <li>• Electronic Stability Program (ESP)</li> <li>• 4-way electric window lifter</li> <li>• Windscreen laminated glass</li> <li>• Speed Limit Assistant</li> <li>• Halogen headlights including integrated LED daytime running lights</li> <li>• Rear window wiper with interval control</li> <li>• Interior headliner fabric crystal grey</li> <li>• KEYLESS-GO start function</li> <li>• Climate: THERMATIC automatic climate control</li> <li>• 5-way headrests</li> <li>• Load compartment cover</li> <li>• Steering column mechanically adjustable in height and length</li> <li>• Mercedes-Benz emergency call system</li> <li>• Package: Light and Vision Package</li> <li>• Package: Seat comfort</li> <li>• Radio: MBUX multimedia system</li> <li>• Radio accessories: Touchpad</li> <li>• Tire pressure monitoring</li> <li>• Wheels: 45.7 cm (18") light alloy wheels in 5-twin-spoke design</li> <li>• Seats: Folding seat backrests in the rear</li> <li>• Cruise control</li> <li>• Electronic immobilizer</li> <li>• Central locking</li> </ul> |
|---|--|

### Extra equipment

- |  |   |
|--|---|
| <ul style="list-style-type: none"> <li>• Car sharing setup (Share your vehicle with friends and family members more easily than ever before—no matter where you are. You retain full control and conveniently decide via the app whether you agree to use the vehicle. The mobile app also locates and unlocks the vehicle. A stored key is only activated when the rental begins.)</li> </ul> | <ul style="list-style-type: none"> <li>• Ambient lighting in 64 colors (Arrange the interior according to your personal preference or current mood. The 64 colors of the ambient lighting create fascinating color worlds, for example in the illuminated air vents, doors or the instrument panel.)</li> <li>• EASY-Pack tailgate with electric operation for opening and closing</li> <li>• Elimination of type marking on luggage compartment lid</li> <li>• Fuel tank with 51 liters capacity</li> <li>• Interior headliner fabric black</li> </ul> |
|--|---|



- Center console storage compartment with roller blind (The roller blind for the center console storage compartment offers elegant privacy made of high-quality material. It looks good, makes the interior appear even tidier, and keeps everything important within easy reach. The practical storage compartment accommodates typical everyday items such as a smartphone, wallet, or various keys.)
- Heated windscreen washer system
- MULTIBEAM LED (18 individually controllable high-performance LEDs per MULTIBEAM LED module for creating a column high beam with 16 controllable individual segments - low beam and high beam with LED projection technology - Adaptive High Beam Assistant Plus (glare-free permanent high beam) - cornering light or cornering light with roundabout and intersection function (only in conjunction with hard drive navigation) - active cornering light when high beam is activated - city light, country road light and motorway light - adaptive full-LED rear lights)
- Package: MBUX High-End Package (Hard Drive Navigation - Smartphone Integration - Wireless Charging System for Mobile Devices - Car Sharing Pre-installation - Navigation Connectivity Package - Media Display - Fully Digital Instrument Display - MBUX Augmented Reality for Navigation - Traffic Sign Assistant - Pre-installation for Live Traffic Information)
- Package: Mirror package (exterior mirrors electrically fold in and out via a button on the driver's door control panel - the menu can be used to set the exterior mirrors to automatically fold in when the vehicle is locked and unfold again when unlocked - the exterior mirror on the driver's side and the interior mirror automatically dim continuously depending on the glare and ambient light)
- Paint finish: metallic (according to sample card)
- Seats: Folding passenger seat
- Seats: Seat climate control for driver and front passenger seats (seat heating and ventilation)
- Steering wheel: multifunction steering wheel heated
- Package: Business (Hard Drive Navigation - Smartphone Integration - Traffic Sign Assistant - Car Sharing Pre-installation - Navigation Connectivity Package - Seat Heating for Driver and Front Passenger - Parking Assistant with PARKTRONIC - Pre-installation for Live Traffic Information)
- Package: Driving Assistance Package (Active Distance Assist - DISTRONIC - Active Steering Assist - Active Speed Limit Assist - Active Brake Assist with Cross-Traffic Function - Evasive Steering Assist - Active Blind Spot Assist - Active Lane Keeping Assist - Active Emergency Stop Assist - Route-Based Speed Adaptation - Extended Automatic Restart on Motorways)
- Package: Parking package with 360° camera (including Active Parking Assist and 360° camera)
- Panoramic sliding roof (electric glass version with comfort and automatic rain closure, electric sunblind, anti-pinch protection and PRE-SAFE closing function)
- Seats: 4-way lumbar support for driver and front passenger
- Seats: Driver's seat electrically adjustable with memory function (including exterior mirrors with parking position)
- Steering wheel: multifunction sports steering wheel in nappa leather (The multifunction sports steering wheel in nappa leather with control panels in black will delight you with every look and every touch. The soft nappa leather is of exquisite quality. The steering wheel therefore always conveys a passion for high-quality automotive details.)
- Telephone accessories: Wireless charging system for mobile devices (in the spontaneous storage compartment)
- Upholstery: ARTICO man-made leather
- Wheels: Tires with emergency running properties (instead of TIREFIT tire sealant)

## Brief expert findings

Documents submitted	At the time of the inspection, the registration certificate Part 2 (letter) was available, but the registration certificate Part 1 (certificate) was not. (Copy)
VIN comparison	The vehicle identification number (VIN) was read from the vehicle and its conformity with the submitted documents was verified during the inspection by the undersigned.
Inspection	The inspection conditions were sufficient for the assessment of the vehicle. Lifting equipment and a pit were available for examining the vehicle.
Test drive	No test drive/maneuvering was carried out during the inspection of the vehicle.
Engine function test	An engine test run was performed.

## Value reducing factors

No.	Component group	Description
1	Front bumper	Spoiler - Broken / torn - Replace

## Wear and tear



No.	Component group	Description
1	Documents	Main inspection certificate - No evidence - No deduction
2	Bonnet	Bonnet (Kratzer) - Stone chips - No deduction
3	Rear bumper	Rear bumper - Scratched - No deduction
4	Body	Body (oberflächlich) - Scratch(es) - No deduction
5	Vehicle glazing	Windscreen - Stone chips - No deduction
6	Side panel - rear left side	Side panel - Scratched - No deduction
7	Tail light	Tail lamp - left side - Scratched - No deduction

The vehicle shows signs of wear commensurate with its age and use.

## Previous damages

No.	Previous damage	Extent of damage (Net)
1	Front, Side - left, Provided by user / customer, from 22 May 2021	1.068,68 €
2	Rear, Provided by user / customer, from 9 Nov 2024	4.436,45 €

## Repainting

No.	Repainting
1	Mudguard - left side, Professionally carried out, Invoice of repair done Non-existent
2	Bonnet, Professionally carried out, Invoice of repair done Non-existent

## Paint coat thickness measurement

Mudguard - left side	210 µm	Bonnet	287 µm
----------------------	--------	--------	--------

## Order/Scope of order

The order was placed to prepare a sales report for the vehicle described. This includes the following:

- Description of core relevant information about the vehicle
- Documentation of equipment features  
(Delivery by third-party service providers)
- Documentation of damage, defects, missing parts
- Documentation of previous damage, unrepaired previous damage, repainting
- a brief visual or functional inspection of the equipment details if possible.  
(Functional tests of driver assistance systems are not included in the scope of services!)
- a photo documentation of the vehicle



## Basis for the order

This product is based on the Alphabet Fuhrpark GmbH guidelines for vehicle returns and valuations. The expert makes the explicit findings in each individual case objectively within the framework of the specified standards based on his or her own expertise.

The vehicle inspection takes place in a disassembled state.

Damage or defects that can only be detected during disassembly/diagnosis work or through advanced knowledge remain within the scope of the prognosis risk. An extended risk exists for concealed defects caused by fraudulent deception and not identifiable by the expert.

Damage or defects resulting from normal use or wear and tear of the vehicle will be accepted according to the applicable standard.

There was no explicit identification or monetary consideration of the expected features within the product.

Features which in their nature and severity slightly exceed normal use but do not constitute unacceptable damage will be documented and identified under signs of use if necessary.

Damage or defects which, according to the underlying standard, can no longer be attributed to normal use or wear and tear are listed in the product under "Depreciating Factors".

Depending on the product specification, a monetary ID can be provided. If this takes place, the costs can be 100% d or pro rata depending on the vehicle's age and mileage.

## Previous damages

According to available information previous damages were repaired at the vehicle. Traces of repairs, which allow conclusions about the area of repair, were not recognizable during the inspection.

## Comments

Der beiliegende Winterradsatz ist nicht Bestandteil der vorliegenden Fahrzeugausstattung.





**Figure 1:** Diagonal front (left)



**Figure 2:** Diagonal front (right)



**Figure 3:** Diagonal rear (left)



**Figure 4:** Diagonal rear (right)



**Figure 5:** Interior - front



**Figure 6:** Interior - rear





Figure 7: Instrument cluster



Figure 8: Instrument panel



Figure 9: interior 360° view ([Online link](#))



Figure 10: Cargo area

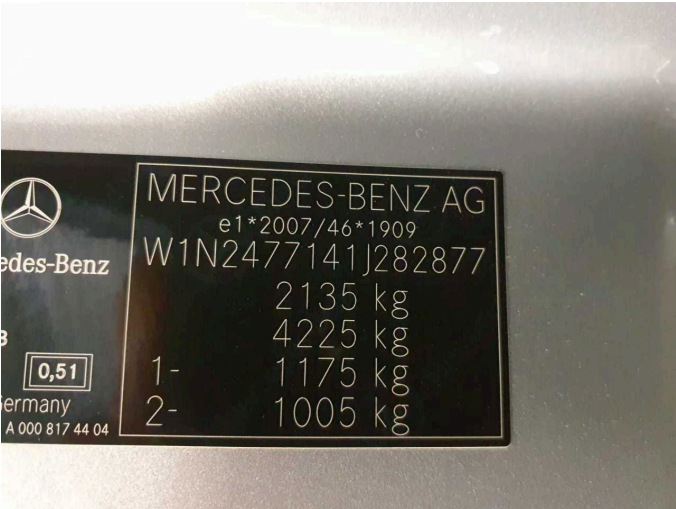


Figure 11: VIN



Figure 12: Mounted tyres





Figure 13: Documents



Figure 14: Additional tyres



Figure 15: Navigation



Figure 16: Misc.

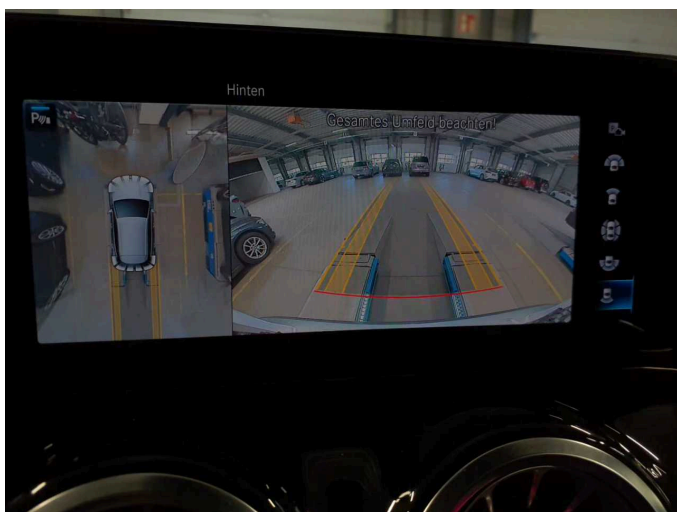


Figure 17: Misc.

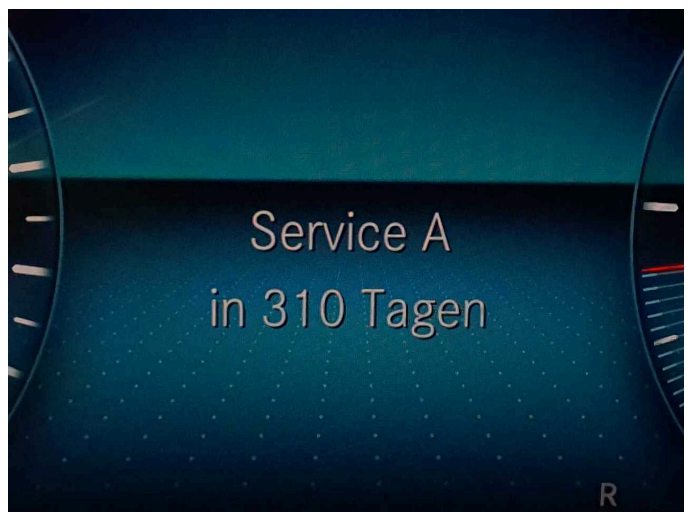


Figure 18: Misc.





Figure 19: Misc.



Figure 20: Misc.



Figure 21: Misc.



Figure 22: Misc.



Figure 23: Misc.



Figure 24: Misc.





Figure 25: Misc.

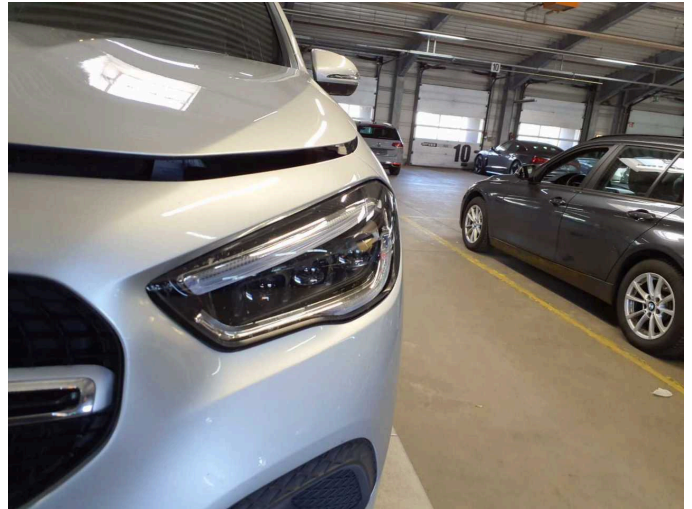


Figure 26: Misc.



Figure 27: Misc.



Figure 28: Misc.



Figure 29: Misc.



Figure 30: Misc.





Figure 31: Misc.

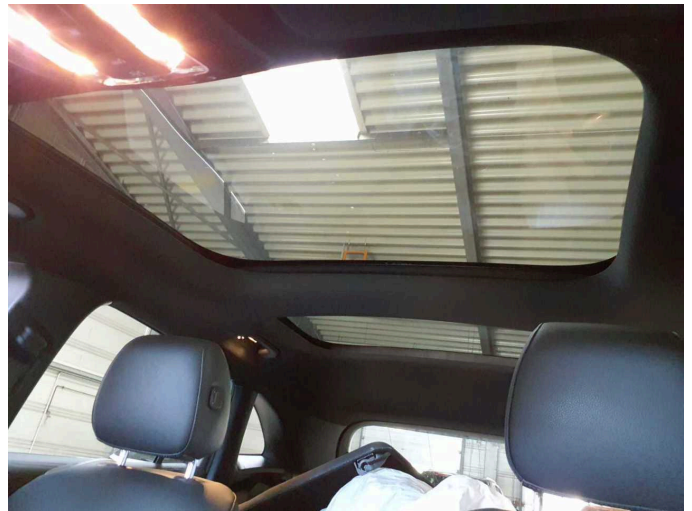


Figure 32: Misc.

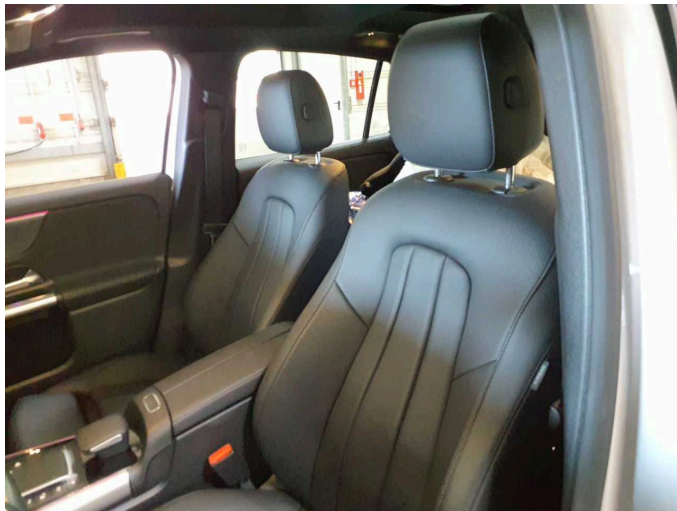


Figure 33: Misc.



Damage 1: Front bumper: Spoiler - Broken / torn - Replace



Damage 1: Front bumper: Spoiler - Broken / torn - Replace

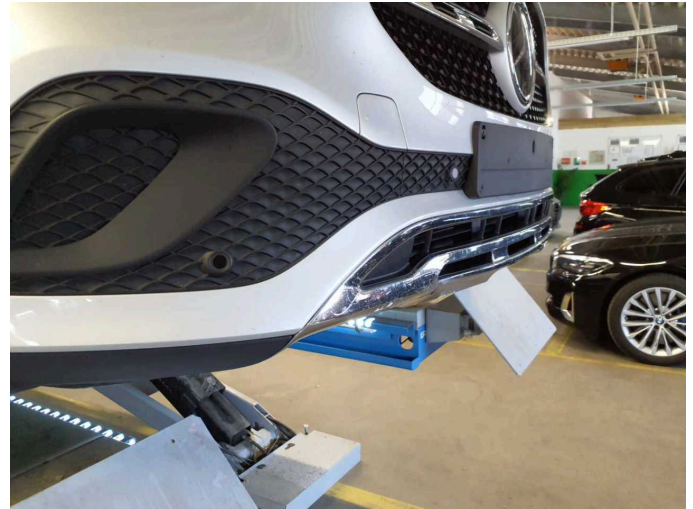


Damage 1: Front bumper: Spoiler - Broken / torn - Replace

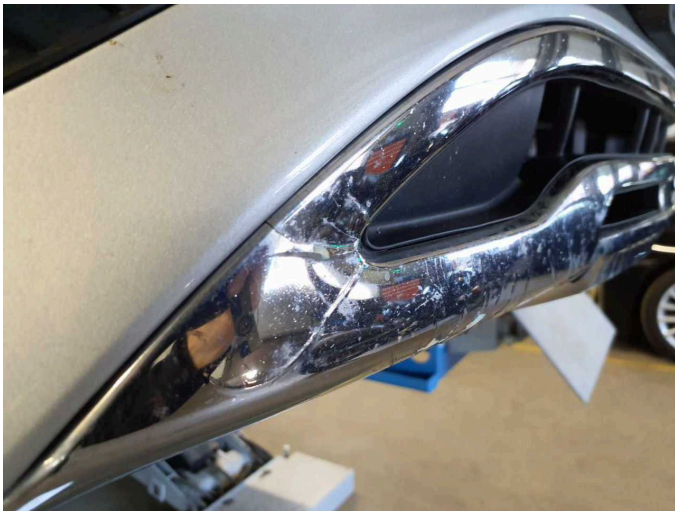




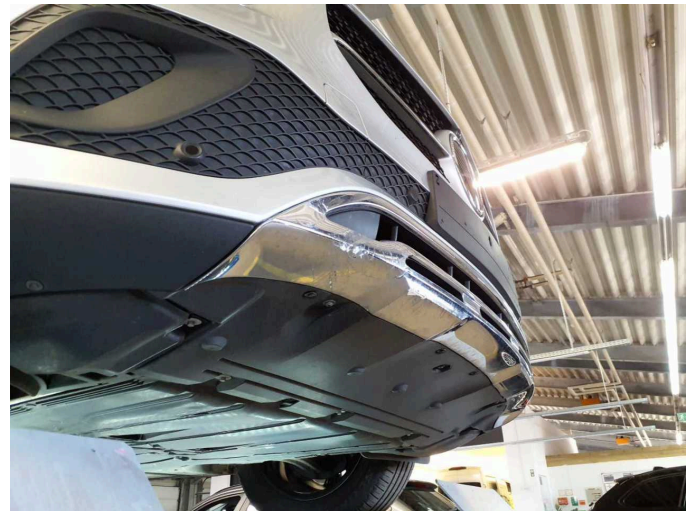
**Damage 1:** Front bumper: Spoiler - Broken / torn - Replace



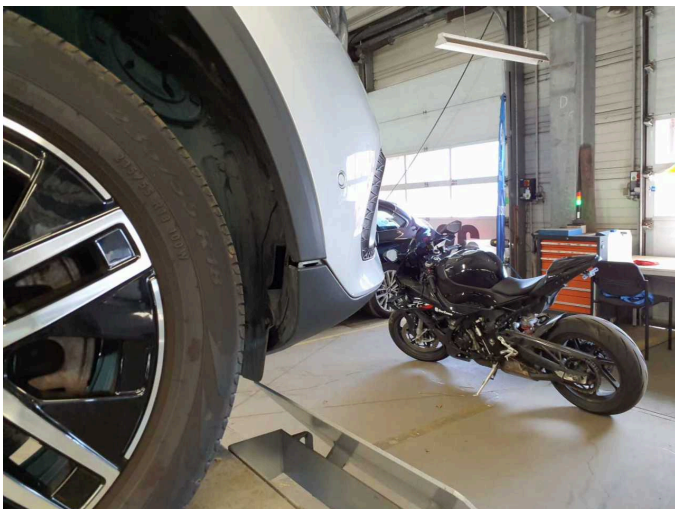
**Damage 1:** Front bumper: Spoiler - Broken / torn - Replace



**Damage 1:** Front bumper: Spoiler - Broken / torn - Replace



**Damage 1:** Front bumper: Spoiler - Broken / torn - Replace



**Damage 1:** Front bumper: Spoiler - Broken / torn - Replace



**Damage 1:** Front bumper: Spoiler - Broken / torn - Replace

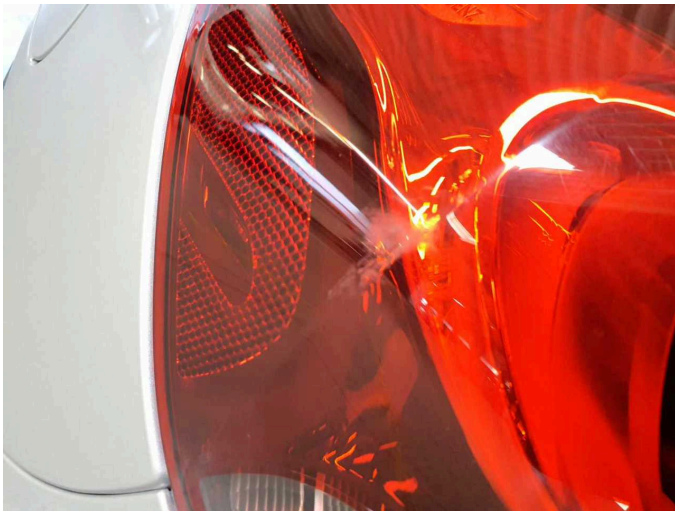




**Damage 1:** Front bumper: Spoiler - Broken / torn - Replace



**Wear and tear 7:** Tail light: Tail lamp - left side - Scratched - No deduction



**Wear and tear 7:** Tail light: Tail lamp - left side - Scratched - No deduction



**Repainting 1:** Mudguard - left side



**Repainting 1:** Mudguard - left side



**Repainting 2:** Bonnet



**Repainting 2: Bonnet**



# Wartungshistorie

(gemäß Auftraggeber Informationen)

Fahrgestellnummer: W1N2477141J282877

Hersteller / Modell: MERCEDES-BENZ MB GLA 220 d 8G-DCT Progressive

Datum	KM-Stand	Beschreibung
04.06.2025	73.328	Regelwartungsdienst
28.06.2024	54.491	HU + AU; Klimaanlage inst.; Systemtest/Eigendiagnose
24.06.2024	54.491	Regelwartungsdienst
19.06.2023	35.487	Regelwartungsdienst
24.05.2022	17.355	Regelwartungsdienst