



Expertise

Protocol number: 41229881  
Order No. / Reference: 25127857  
Inspection date: 21 Aug 2025

Manufacturer: Mercedes-Benz	Model: GLB 200 d 4Matic 8G-DCT AMG Line
VIN: W1N2476131W181744	



Vehicle details	
Manufacturer / Type / Model / Equipment	
Mercedes-Benz GLB 200 d 4Matic 8G-DCT AMG Line	
Vehicle Identification number	W1N2476131W181744
Mileage (Read)	90,051 km
First registration	15 Mar 2022
Number of holders	1
Power / Engine displacement	110 kw / 1,950 ccm
Fuel type / Cylinder	Diesel / 4
Gearbox / Number of gears	Automatic / 8
Type of drive	All-wheel drive
Type of vehicle	SUV
Colour / colour code	NACHTSCHWARZ UNILACK
Doors / Seats	5 / 5
Upholstery type	Alcantara / Leather
Colour of upholstery	Black-Red
Vehicle with smoke odor	no



Vehicle details			
Maintenance booklet / proof	digital proof / complete	Next maintenance in	-81 Tag(e)
Last maintenance on / at	05/2024 at 83,576 km		
Key is / should be	2 / 2	FZG documents	ZB#1 (S) was available (copy), ZB#2 (B) was not available
		Letter No.	GF811894
Previous damage / Accident	None detectable	Repainting	Detectable
Inspection conditions	sufficient	Lifting equipment / pit	yes
Test drive	short drive on the company premises	Engine function test	Performed
Manufacturer key number/ type code number	2222 / AHX 00097		
Emission standard	EURO6;WLTP;AP;PI/CI; M, N1 I	Fine dust sticker	
Permitted total weight	2,250 kg	Empty weight	

Tyres				
Mounted tyres				
#	Tyre size	Type of tyre	Manufacturer	Tread depth
1)	215/60 R18 98H	Winter tires (with run-flat tires) on Light alloy	Continental	4mm / 4mm
2)	215/60 R18 98H	Winter tires (with run-flat tires) on Light alloy	Continental	7mm / 7mm
Additional tyres				
#	Tyre size	Type of tyre	Manufacturer	Tread depth
1)	235/50 R19 99W	Summer tyres on Light alloy	Pirelli	5mm / 5mm
2)	235/50 R19 99W	Summer tyres on Light alloy	Pirelli	7mm / 7mm
Replacement				
Typ	Tyre size	Type of tyre	Manufacturer	Tread depth
	Tirefit	Expiration date 10/2026		
Legend: Tread depth information for tires on the left is in the first place, for tires on the right is in the second place on the axle in the direction of travel				

## Equipment

### Equipment

- Klimaautomatik

### Standard equipment

- |   |   |
|---|---|
| <ul style="list-style-type: none"> <li>• Airbag for driver and front passenger</li> <li>• Airbag: Sidebag for driver and front passenger (combined thorax/pelvis bag)</li> <li>• Active Lane Keeping Assist</li> <li>• AMG floor mats (in black with "AMG" lettering)</li> <li>• AMG Styling (AMG front apron with chrome front splitter - AMG rear apron with diffuser look - chrome trim element and two visible tailpipe trims)</li> <li>• ATTENTION ASSIST (can detect typical signs of fatigue through steering behavior and can warn the driver of impending microsleep)</li> <li>• On-board computer</li> <li>• Brake assist</li> <li>• diesel particulate filter</li> <li>• tachometer</li> <li>• DYNAMIC SELECT (Simply drive the way you want. DYNAMIC SELECT offers various driving programs at the touch of a button, predetermining, for example, the engine, transmission, chassis, or steering. Sport mode offers a decidedly dynamic ride, while the basic Comfort mode offers a very balanced ride. ECO, on the other hand, focuses on maximum efficiency, saving fuel and money.)</li> <li>• Transmission: 8G-DCT dual clutch transmission automatic 8-speed</li> <li>• Halogen headlights including integrated LED daytime running lights</li> <li>• Rear window heated</li> <li>• Rear window wiper</li> <li>• Interior headliner fabric crystal grey</li> <li>• Climate: THERMATIC automatic climate control (1-zone air conditioning - automatically controlled air distribution - recirculation function - tunnel mode in conjunction with navigation system - fine dust filter)</li> <li>• Headrests (2)</li> <li>• Rear headrests (3)</li> <li>• Paint finish: Uni</li> <li>• Load compartment cover (roller blind) (can be stowed under the loading floor)</li> <li>• Steering column mechanically adjustable for length and height</li> <li>• Mercedes-Benz Emergency Call System (The Mercedes-Benz Emergency Call System can provide a decisive time advantage in an emergency. When an accident is detected, a communication module with its own SIM card automatically triggers an emergency call, which can shorten the time until emergency services arrive. The emergency call can also be triggered manually to organize assistance.)</li> </ul> | <ul style="list-style-type: none"> <li>• Airbag: Kneebag for driver</li> <li>• Airbag: Windowbags</li> <li>• Active Brake Assist</li> <li>• 4MATIC all-wheel drive</li> <li>• AMG sports pedal system (brushed stainless steel with rubber studs)</li> <li>• Anti-lock braking system (ABS)</li> <li>• Armrest in the rear</li> <li>• Automatic passenger airbag deactivation</li> <li>• Heated exterior mirrors on the left and right, electrically adjustable from the inside (with aspherically curved mirror glass and integrated indicator light)</li> <li>• Roof rails in polished aluminum</li> <li>• Double cup holder</li> <li>• Third brake light in LED technology</li> <li>• ECO start-stop function</li> <li>• Door sills with "Mercedes-Benz" lettering</li> <li>• Electronic Stability Program (ESP)</li> <li>• Chassis: Comfort chassis</li> <li>• electric window lifter (4)</li> <li>• Luggage net on driver and passenger backrest</li> <li>• Speed Limit Assist (The Speed Limit Assist makes it easy for you to comply with speed limits and avoid unnecessary fines. The system shows you what's permitted: It can detect the current speed limit via the camera and display it in the instrument cluster. It also detects additional speed limit signs for special weather conditions, such as wet conditions.)</li> <li>• KEYLESS-GO start function</li> <li>• Communication module (LTE) for the use of Mercedes me connect services (communication module with permanently installed SIM card of the LTE mobile communications standard - two mobile communications antennas)</li> <li>• Fuel tank with larger volume 60 l</li> <li>• Loading floor height adjustable and removable</li> <li>• Steering wheel: Multifunction sports steering wheel in nappa leather (The multifunction sports steering wheel in nappa leather with chrome control panels has a flattened bottom and perforated grips—an excellent qualification for sporty driving. The touch control buttons on the left and right, among others, operate a variety of functions, including navigation, telephony, and entertainment. Last but not least, you can adjust the cruise control and distance control: Everything under control without taking your hands off the steering wheel.)</li> </ul> |
|---|---|



- Package: Light and visibility package (roof control unit 4 light blocks (including glasses compartment) - interior light/reading light rear in mounting plate (rear/left/right) - touchpad lighting (front) - reading lights (front/left/right), console lighting - make-up lights (front/left/right) - signal and ambient light - signal exit light (front/left/right) - footwell lighting (front/left/right) - cup holder/storage compartment lighting - spontaneous storage compartment lighting)
- Package: Seat comfort (passenger seat height adjustment - seat cushion angle adjustment for the driver and passenger seats - seat cushion depth adjustment for improved seating comfort through a 60 mm extended thigh support area - specific seat design)
- Radio: MBUX multimedia system (17.78 cm (7") instrument display, 17.78 cm (7") media display with touch function, touch control buttons on the steering wheel, radio (FM/AM), USB port in the center console under the armrest, Bluetooth telephony with contact transfer and audio streaming of music files, vehicle function display (driver assistance system, drive programs, and vehicle settings), favorites memory, smartphone-related voice control - activated by long-pressing the voice button on the steering wheel)
- Remote Services Plus (The Remote Services Plus package transforms mobility into a new experience, offering greater comfort and safety. Status queries provide information about the range. You can remotely control certain functions and locate your vehicle. Services such as Maintenance Management coordinate service appointments, saving you valuable time.)
- Seats: Sports seats (with adjustable headrest)
- Seats: Front seats are mechanically adjustable (Excellent seating comfort as standard—the standard seat is upholstered in a high-quality fabric combination. You can manually adjust your individual seating position for length and height.)
- High-visibility vest for drivers
- Immobiliser
- Carbon structure trim elements
- Navigation accessories: Advanced MBUX functions (personalization (profiles) and prediction functions - LINGUATRONIC with natural language understanding - activation via "Hey Mercedes" - Wi-Fi hotspot - Internet radio)
- Package: Off-road technology package (additional off-road driving program, adjustable via DYNAMIC SELECT, which adapts the power delivery and ABS control for light terrain off paved roads; off-road light permanently switches the cornering light on up to a speed of 50 km/h for a wide light distribution directly at the front of the vehicle; Downhill Speed Regulation (DSR) supports controlled downhill driving through targeted braking interventions, can be activated within the speed range)
- Upholstery: ARTICO man-made leather/DINAMICA microfiber
- Radio accessories: Digital radio
- Radio accessories: Touchpad (integrated into the center console, including a palm rest - single and multi-finger gestures, swiping movements, and zoom gestures by spreading and pinching the fingers - recognizes handwritten characters: letters, special characters, and numbers - clear haptic feedback)
- Rain-light sensor
- Tire pressure monitoring (TPMS)
- Wheels: 48.3 cm (19") AMG light-alloy wheels in 5-twin-spoke design (aerodynamically optimized, painted tantalum gray with a high-sheen finish, 235/50 R19 with 7.5 J x 19 ET 53)
- Windscreen wipers with rain sensor
- Power steering
- Seats: Folding rear seat backrests (40/20/40 ratio and adjustable in 7 tilt positions)
- Socket (12 V) in center console
- Cruise control (Drive in a relaxed and fuel-efficient manner, especially on longer journeys. Select your desired speed, and your vehicle will automatically control the speed. In addition to maintaining your cruising speed, the speed limiter helps you maintain a maximum speed. This increases road safety and protects you from expensive fines.)

### Extra equipment

- LED High Performance Headlights (LED High Performance Headlights offer greater safety at night and a distinctive, striking look. Thanks to LED technology, they illuminate the road better than conventional headlights – while consuming less energy.)
- Package: Driving Assistance Package (Active Distance Assist DISTRONIC - Active Steering Assist - Active Speed Limit Assist - Active Brake Assist with Cross-Traffic Function - Evasive Steering Assist - Active Blind Spot Assist - Active Lane Keeping Assist - Active Emergency Stop Assist - Route-Based Speed Adaptation - Extended Automatic Restart on Motorways)
- Active Parking Assist
- Elimination of type marking on luggage compartment lid
- Interior headliner fabric black
- Package: Business (hard drive navigation - smartphone integration - traffic sign assistant - preparation for digital key handover - navigation connectivity package - seat heating for driver and front passenger - parking assistant with PARKTRONIC - preparation for live traffic information)



- Package: Mirror package (exterior mirrors electrically fold in and out via a button on the driver's door control panel - the menu can be used to set the exterior mirrors to automatically fold in when the vehicle is locked and unfold again when unlocked - the exterior mirror on the driver's side and the interior mirror automatically dim continuously depending on the glare and ambient light)
- Radio accessories: Advanced sound system (with 10 speakers and 225 watts of system power)
- Seats: Adjustable rear seats (A multi-talent – with the longitudinal adjustment of the rear seats, you can transform your vehicle from a small space miracle for rear passengers to a compact premium transporter in just a few moments. If necessary, you can slide the entire rear seat forward by up to 90 millimeters and backward by 50 millimeters.)
- Wheels: 48.3 cm (19") AMG light-alloy wheels in 5-twin-spoke design
- Package: MBUX High-End Package (without wireless charging system and MBUX Augmented Reality) (Hard Drive Navigation - Smartphone Integration - Pre-installation for digital key handover - Connectivity Package Navigation - Media Display - Fully Digital Instrument Display - Traffic Sign Assistant - Pre-installation for Live Traffic Information)
- Package: Night (AMG Line) (Door trim in black with running board inserts in high-gloss black -Exterior mirror housings in black - Waistline trim and window line trim strip in high-gloss black -Roof rails in black -Heat-insulating dark tinted glass -48.3 cm (19") AMG alloy wheels in 5-twin spoke design, aerodynamically opted, high-gloss black paint and high-gloss, with 235/50 R 19 on 7.5 J x 19 ET 53 -Diamond grille with chrome pins, individual blades in black paint and chrome inserts as well as AMG-specific front spoiler with high-gloss black inserts -AMG rear spoiler with trim strip in high-gloss black)
- Seat heating for driver and front passenger
- Seats: 4-way lumbar support for driver and front passenger
- TIREFIT with tire inflation compressor
- Winter complete wheels

## Brief expert findings

Documents submitted	At the time of the inspection, the registration certificate Part 1 (certificate) was available, but the registration certificate Part 2 (letter) was not. (Copy)
VIN comparison	The vehicle identification number (VIN) was read from the vehicle and its conformity with the submitted documents was verified during the inspection by the undersigned.
Inspection	The inspection conditions were sufficient for the assessment of the vehicle. Lifting equipment and a pit were available for examining the vehicle.
Test drive	A short maneuvering and shunting trip was carried out on the company premises.
Engine function test	An engine test run was performed.

## Value reducing factors

No.	Component group	Description
1	Seat - front	Seat base trim - right side (Netz) - Damaged - Replace
2	Seat - rear	Armrest - centre (Verkleidung/ Folgekosten möglich) - Missing - Replace
3	Indicator - front	Mirror - left side - Missing - Replace
4	Boot lid / rear door	Boot lid - Glued / labelled - De-glue / neutralise
5	Side panel - rear left side	Side panel - dent(s) - Smooth repair work
6	Side panel - rear right side	Side panel - dent(s) - Smooth repair work
7	Misc.	Main inspection - Due - Replace
8	2nd wheel set	1 tyre - Damaged - Replace
9	Wing mirror - left side	Cap - Missing - Replace
10	Front bumper	Spoiler - Scratch(es) - Paint
11	Rear bumper	Spoiler - Scratched - Paint
12	Wheel / tyres	Tyre - front (4mm) - Worn - Replace
13	Body	B-pillar - left side - Dent / paintcoat damage - Repair and paint
14	Rear bumper	Rear bumper - Dent / paintcoat damage - Repair and paint



No.	Component group	Description
15	Rear bumper	Rear bumper (Unterteil) - Damaged - Replace
16	Misc.	Inspection / maintenance - Due - Perform
17	Boot lid / rear door	Boot lid - Dent / paintcoat damage - Repair and paint

## Wear and tear

No.	Component group	Description
1	Braking system	Brake discs and pads - rear - Corrosion - No deduction
2	Braking system	Brake discs and brake pads - front - Corrosion - No deduction
3	Bonnet	Bonnet - Stone chips - No deduction
4	Front bumper	Front bumper - Stone chips - No deduction
5	Trim / covers	Boot lid - interior trim - Abrasion - No deduction

The vehicle shows signs of wear commensurate with its age and use.

## Repainting

### No. Repainting

- 1 Door - rear left side, Professionally carried out, Invoice of repair done Non-existent
- 2 Door - rear right side, Professionally carried out, Invoice of repair done Non-existent

## Paint coat thickness measurement

Door - rear left side	157 µm	Door - rear right side	158 µm
-----------------------	--------	------------------------	--------

## Order/Scope of order

The order was placed to prepare a sales report for the vehicle described. This includes the following:

- Description of core relevant information about the vehicle
- Documentation of equipment features  
(*Delivery by third-party service providers*)
- Documentation of damage, defects, missing parts
- Documentation of previous damage, unrepaired previous damage, repainting
- a brief visual or functional inspection of the equipment details if possible.  
(*Functional tests of driver assistance systems are not included in the scope of services!*)
- a photo documentation of the vehicle



## Basis for the order

This product is based on the Alphabet Fuhrpark GmbH guidelines for vehicle returns and valuations. The expert makes the explicit findings in each individual case objectively within the framework of the specified standards based on his or her own expertise.

The vehicle inspection takes place in a disassembled state.

Damage or defects that can only be detected during disassembly/diagnosis work or through advanced knowledge remain within the scope of the prognosis risk. An extended risk exists for concealed defects caused by fraudulent deception and not identifiable by the expert.

Damage or defects resulting from normal use or wear and tear of the vehicle will be accepted according to the applicable standard.

There was no explicit identification or monetary consideration of the expected features within the product.

Features which in their nature and severity slightly exceed normal use but do not constitute unacceptable damage will be documented and identified under signs of use if necessary.

Damage or defects which, according to the underlying standard, can no longer be attributed to normal use or wear and tear are listed in the product under "Depreciating Factors".

Depending on the product specification, a monetary ID can be provided. If this takes place, the costs can be 100% d or pro rata depending on the vehicle's age and mileage.

## Previous damages

Apparently, no repaired previous damage could be found on the vehicle.





Figure 1: Diagonal front (left)



Figure 2: Diagonal front (right)



Figure 3: Diagonal rear (left)



Figure 4: Diagonal rear (right)



Figure 5: Interior - front

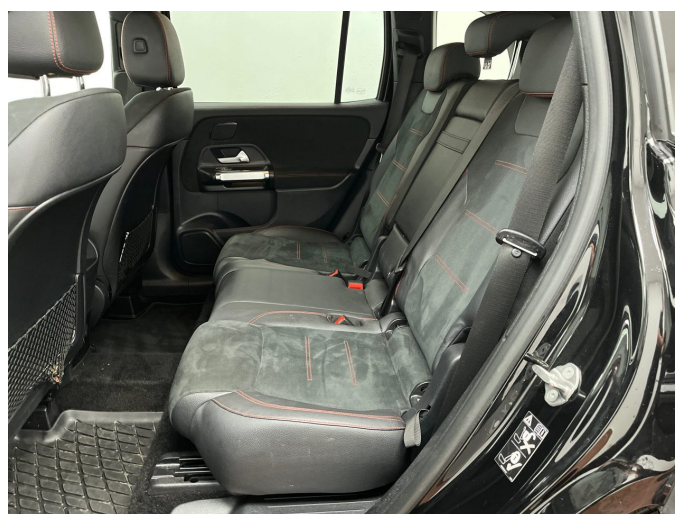


Figure 6: Interior - rear





Figure 7: Instrument cluster



Figure 8: Instrument panel



Figure 9: interior 360° view



Figure 10: Cargo area



Figure 11: VIN



Figure 12: Mounted tyres



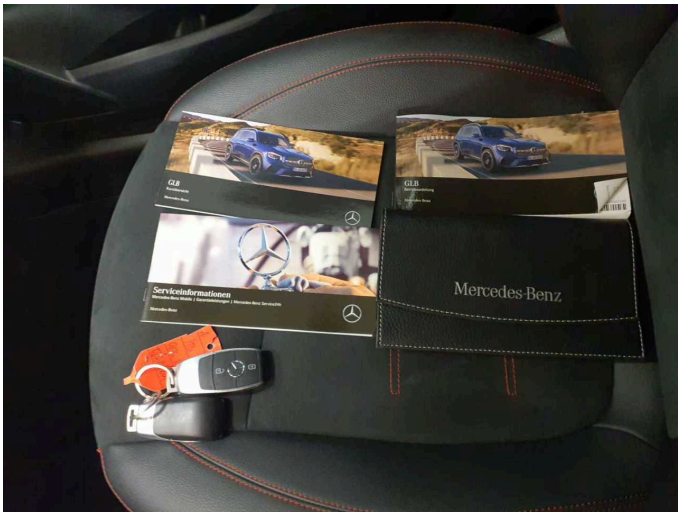


Figure 13: Documents



Figure 14: Documents



Figure 15: Documents



Figure 16: Additional tyres

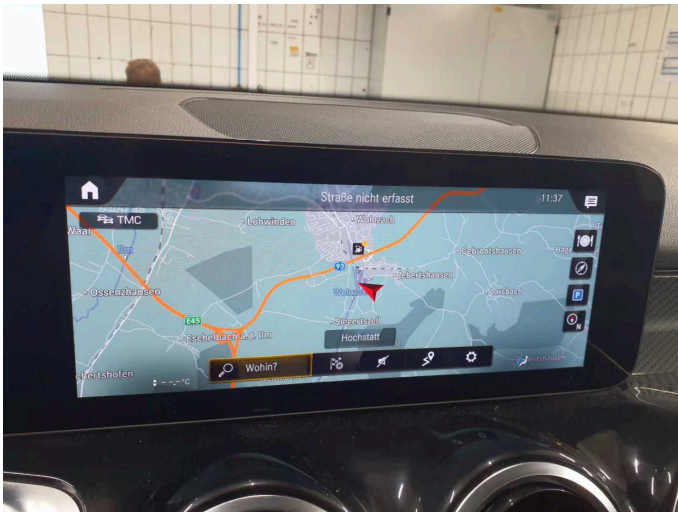


Figure 17: Navigation



Figure 18: Misc.



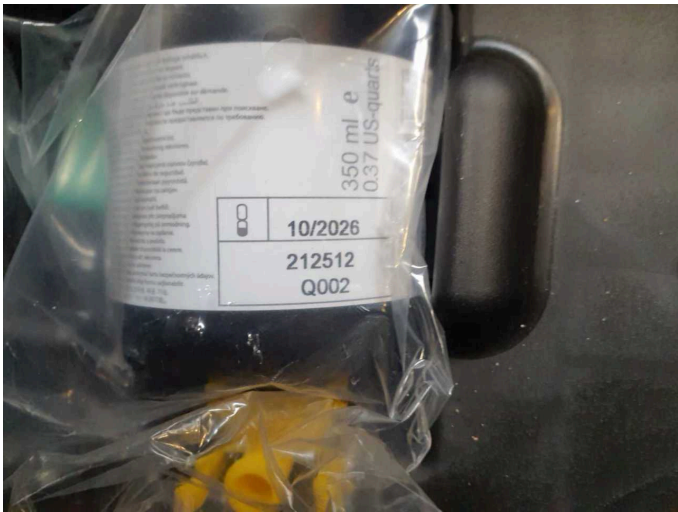


Figure 19: Misc.



Figure 20: Misc.



Figure 21: Misc.

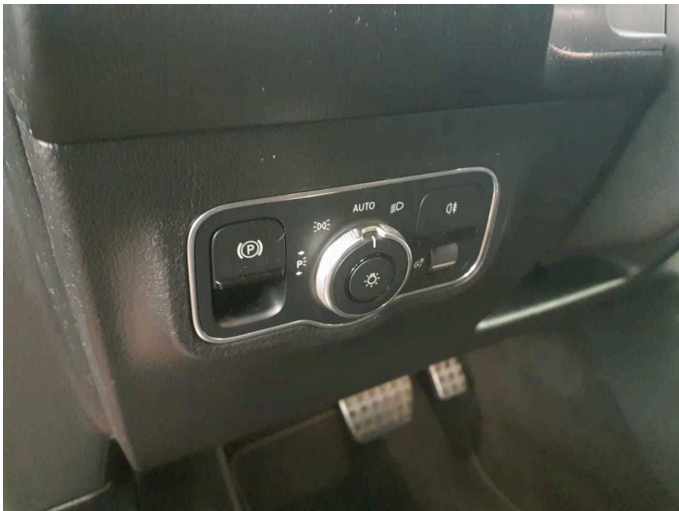


Figure 22: Misc.

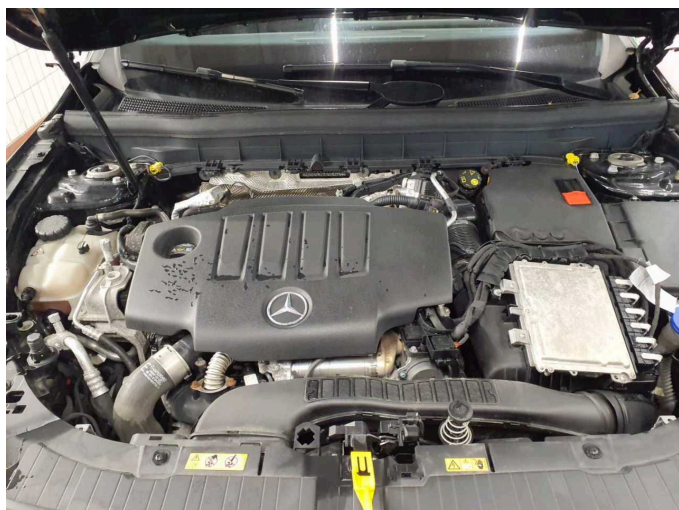


Figure 23: Misc.



Figure 24: Misc.





**Figure 25:** Misc.



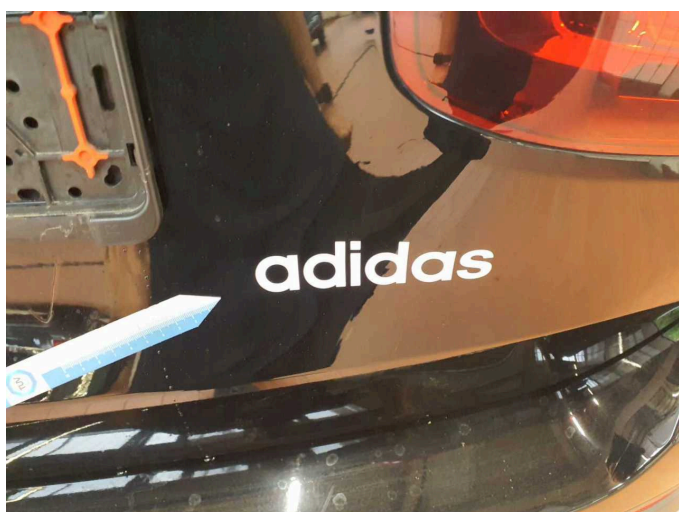
**Damage 1:** Seat - front: Seat base trim - right side (Netz) - Damaged - Replace



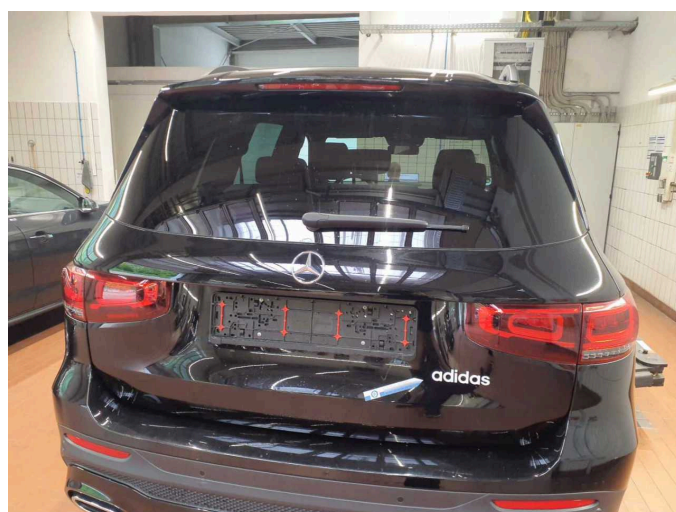
**Damage 2:** Seat - rear: Armrest - centre (Verkleidung/ Folgekosten möglich) - Missing - Replace



**Damage 3:** Indicator - front: Mirror - left side - Missing - Replace

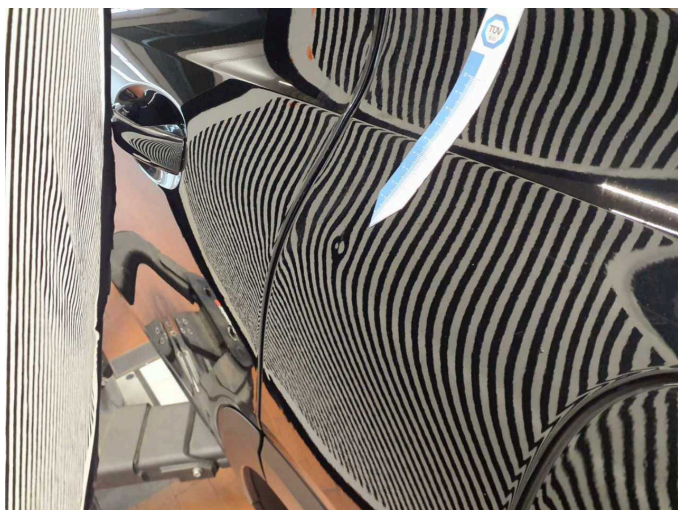


**Damage 4:** Boot lid / rear door: Boot lid - Glued / labelled - De-glue / neutralise



**Damage 4:** Boot lid / rear door: Boot lid - Glued / labelled - De-glue / neutralise

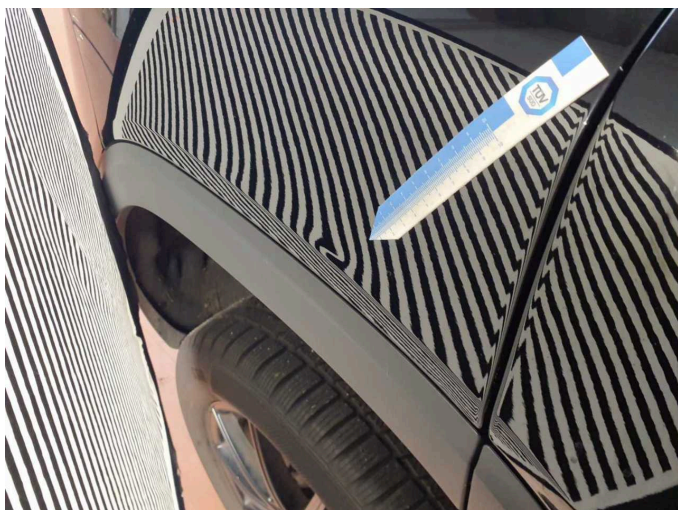




**Damage 5:** Side panel - rear left side: Side panel - dent(s) - Smooth repair work



**Damage 5:** Side panel - rear left side: Side panel - dent(s) - Smooth repair work



**Damage 6:** Side panel - rear right side: Side panel - dent(s) - Smooth repair work



**Damage 6:** Side panel - rear right side: Side panel - dent(s) - Smooth repair work



**Damage 7:** Misc.: Main inspection - Due - Replace



**Damage 8:** 2nd wheel set: 1 tyre - Damaged - Replace





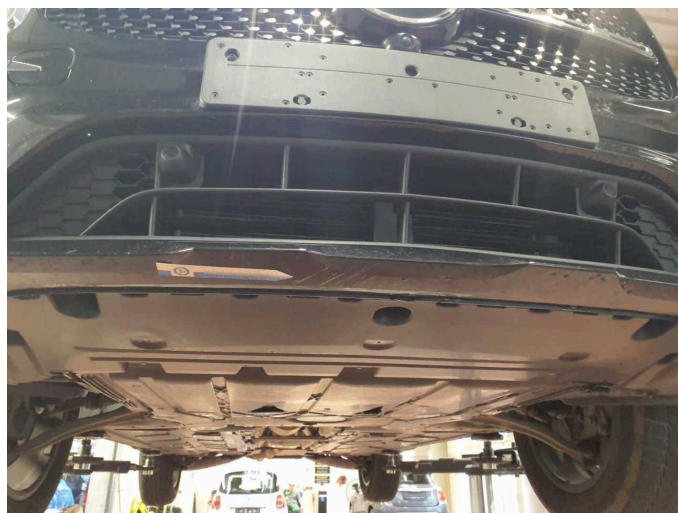
**Damage 8:** 2nd wheel set: 1 tyre - Damaged - Replace



**Damage 9:** Wing mirror - left side: Cap - Missing - Replace



**Damage 10:** Front bumper: Spoiler - Scratch(es) - Paint



**Damage 10:** Front bumper: Spoiler - Scratch(es) - Paint



**Damage 11:** Rear bumper: Spoiler - Scratched - Paint



**Damage 11:** Rear bumper: Spoiler - Scratched - Paint





**Damage 12:** Wheel / tyres: Tyre - front (4mm) - Worn - Replace



**Damage 12:** Wheel / tyres: Tyre - front (4mm) - Worn - Replace



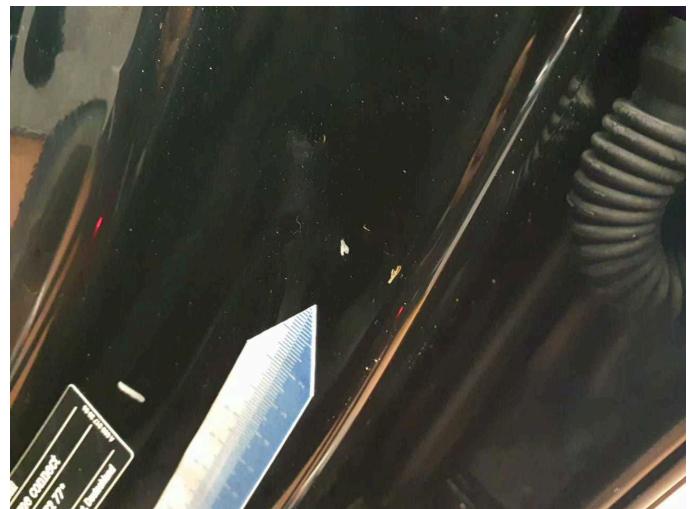
**Damage 12:** Wheel / tyres: Tyre - front (4mm) - Worn - Replace



**Damage 12:** Wheel / tyres: Tyre - front (4mm) - Worn - Replace



**Damage 13:** Body: B-pillar - left side - Dent / paintcoat damage - Repair and paint

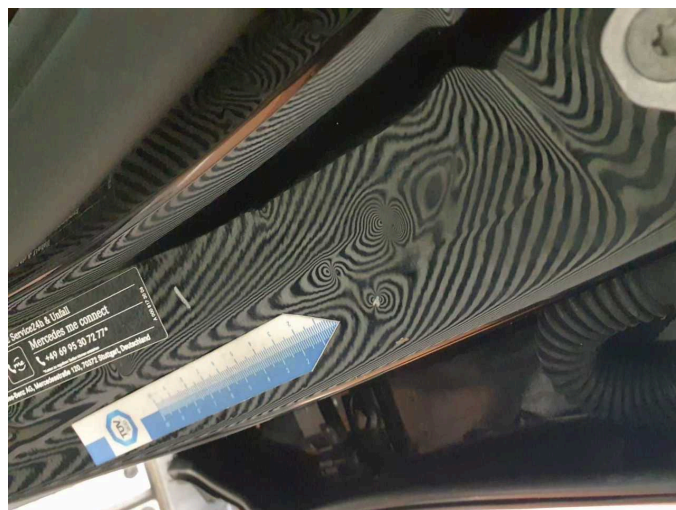


**Damage 13:** Body: B-pillar - left side - Dent / paintcoat damage - Repair and paint





**Damage 13:** Body: B-pillar - left side - Dent / paintcoat damage - Repair and paint



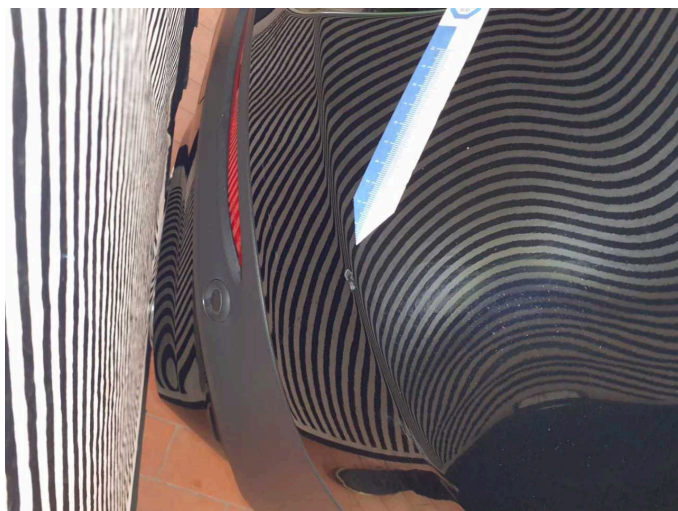
**Damage 13:** Body: B-pillar - left side - Dent / paintcoat damage - Repair and paint



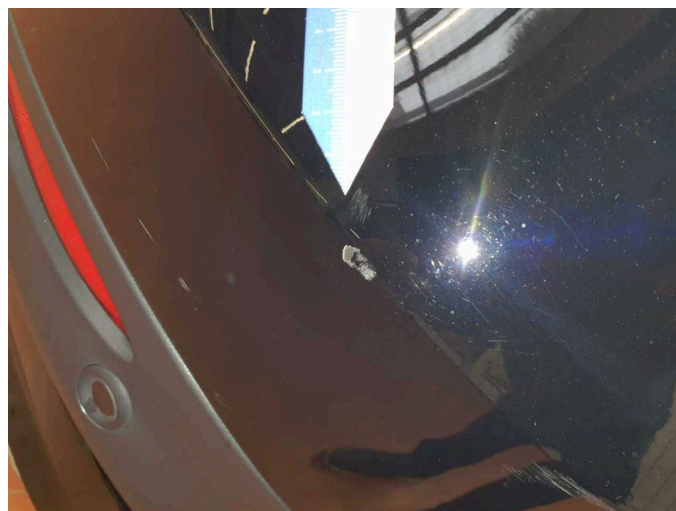
**Damage 14:** Rear bumper: Rear bumper - Dent / paintcoat damage - Repair and paint



**Damage 14:** Rear bumper: Rear bumper - Dent / paintcoat damage - Repair and paint



**Damage 14:** Rear bumper: Rear bumper - Dent / paintcoat damage - Repair and paint



**Damage 14:** Rear bumper: Rear bumper - Dent / paintcoat damage - Repair and paint





**Damage 14:** Rear bumper: Rear bumper - Dent / paintcoat damage - Repair and paint



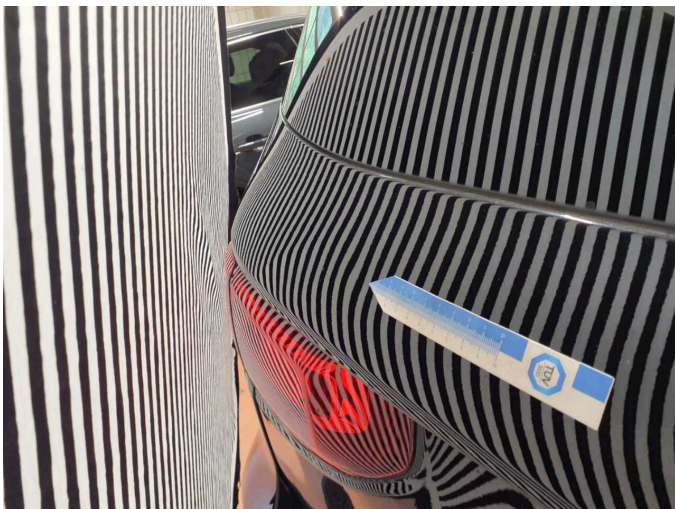
**Damage 15:** Rear bumper: Rear bumper (Unterteil) - Damaged - Replace



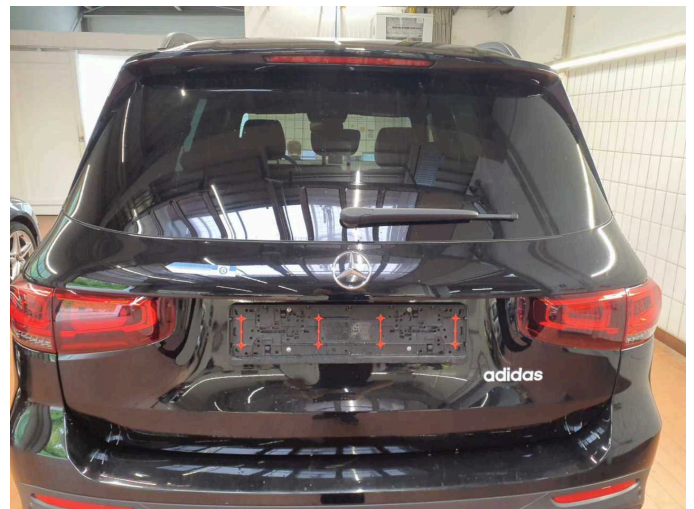
**Damage 15:** Rear bumper: Rear bumper (Unterteil) - Damaged - Replace



**Damage 16:** Misc.: Inspection / maintenance - Due - Perform

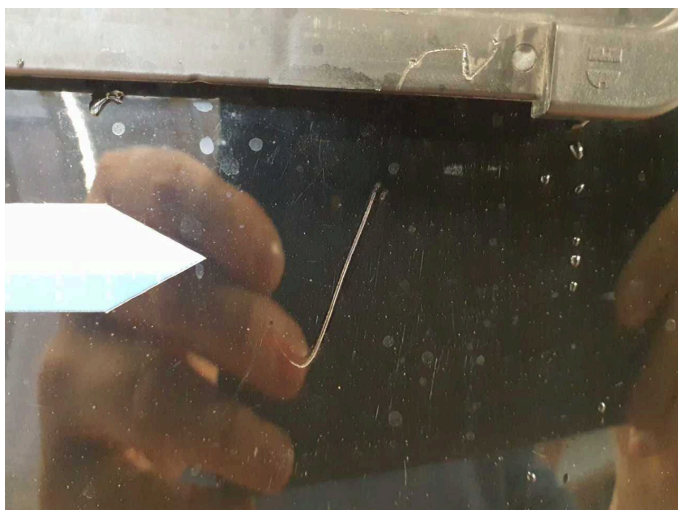


**Damage 17:** Boot lid / rear door: Boot lid - Dent / paintcoat damage - Repair and paint



**Damage 17:** Boot lid / rear door: Boot lid - Dent / paintcoat damage - Repair and paint

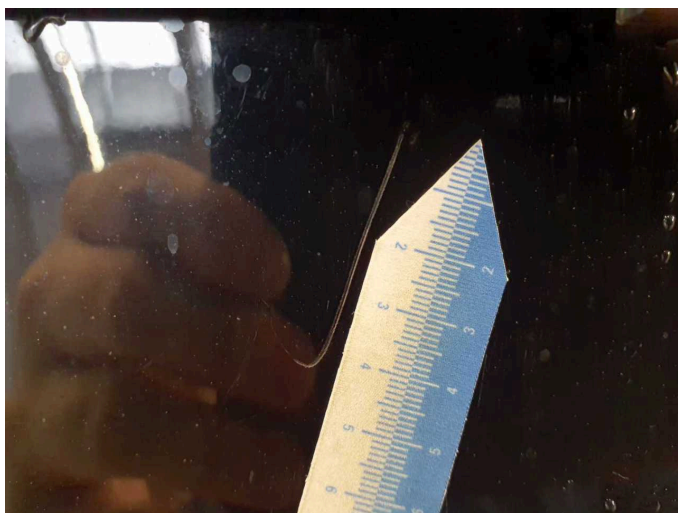




**Damage 17:** Boot lid / rear door: Boot lid - Dent / paintcoat damage - Repair and paint



**Damage 17:** Boot lid / rear door: Boot lid - Dent / paintcoat damage - Repair and paint



**Damage 17:** Boot lid / rear door: Boot lid - Dent / paintcoat damage - Repair and paint



**Repainting 1:** Door - rear left side



**Repainting 2:** Door - rear right side



# Wartungshistorie

(gemäß Auftraggeber Informationen)

Fahrgestellnummer: W1N2476131W181744

Hersteller / Modell: MERCEDES-BENZ MB GLB 200 d 4Matic 8G-DCT AMG Line

Datum	KM-Stand	Beschreibung
29.05.2024	83.576	Regelwartungsdienst
27.04.2023	53.373	Regelwartungsdienst
17.08.2022	27.917	Regelwartungsdienst