



Expertise

Protocol number: 40607397
Order No. / Reference: 24951264
Inspection date: 15 Jul 2025

Manufacturer: Mercedes-Benz	Model: EQA 300 4Matic Electric Art
VIN: W1N2437081J037721	



Vehicle details	
Manufacturer / Type / Model / Equipment	
Mercedes-Benz EQA 300 4Matic Electric Art	
Vehicle Identification number	W1N2437081J037721
Mileage (Read)	37,197 km
First registration	7 Jul 2022
Number of holders	1
Power / Engine displacement	168 kw /
Fuel type / Cylinder	Electric / 0
Gearbox / Number of gears	Direct drive / 1
Type of drive	All-wheel drive
Type of vehicle	SUV
Colour / colour code	Roségold metallic
Doors / Seats	5 / 5
Upholstery type	Cloth / leather combination
Colour of upholstery	Orange-Anthracite
Vehicle with smoke odor	no



Vehicle details

Maintenance booklet / proof	digital proof / complete	Next maintenance in	84 Tag(e)
Last maintenance on / at	09/2024 at 29,600 km		
Key is / should be	2 / 2	FZG documents	ZB#2 (B) was available (copy), ZB#1 (S) was not available
		Letter No.	GJ442503
Previous damage / Accident	Detectable	Repainting	Detectable
Inspection conditions	Sufficient	Lifting equipment / pit	yes
Test drive	Short drive on the company premises	Engine function test	Performed
Manufacturer key number/ type code number	2222 / AXX 00007		
Emission standard	2017/1151;WLTP;reine Elektrofz	Fine dust sticker	
Permitted total weight	2,535 kg	Empty weight	

Tyres

Mounted tyres

#	Tyre size	Type of tyre	Manufacturer	Tread depth
1)	235/50 R19 103T	Summer tyres on Light alloy	Bridgestone	5mm / 5mm
2)	235/50 R19 103T	Summer tyres on Light alloy	Bridgestone	6mm / 6mm

Replacement

Typ	Tyre size	Type of tyre	Manufacturer	Tread depth
	Tirefit	Expiration date 06/2027		

Legend: Tread depth information for tires on the left is in the first place, for tires on the right is in the second place on the axle in the direction of travel

Equipment

Standard equipment

- Acoustic Surrounding Area Protection (To ensure that your vehicle does not pose a danger to pedestrians and cyclists, even when driving purely electrically and almost silently, the Acoustic Surrounding Area Protection generates a Mercedes-Benz-specific sound outside the vehicle up to a speed of 30 km/h.)
- Armrest in the rear
- ATTENTION ASSIST
- Backlit spiral-look trim elements (This backlit trim element lends your interior a futuristic flair. In combination with the ambient lighting, the spiral-look trim element on the instrument panel shines in your desired color. The translucent, delicately patterned surface creates a unique effect, especially at night.)
- Center console storage compartment with roller blind (The roller blind for the center console storage compartment offers elegant privacy made of high-quality material. It looks good, makes the interior appear even tidier, and keeps everything important within easy reach. The practical storage compartment accommodates typical everyday items such as a smartphone, wallet, or various keys.)
- Central locking
- Charging system: Direct current charging system (DC charging) (For your optimal charging speed with a maximum of 100 kW)
- colored glass
- Communication module (LTE) for the use of Mercedes me connect services (communication module with permanently installed SIM card of the LTE mobile communications standard - two mobile communications antennas)
- Door sills with series-specific lettering, illuminated and with interchangeable cover
- Double cup holder
- DYNAMIC SELECT
- Electrically adjustable exterior mirrors
- High-visibility vest for drivers
- Immobiliser
- LED high-performance headlights (with LED high and low beam, multifunctional light guide with daytime running lights, position lights and direction indicators, "Coming Home" function with blue welcome light, and LED taillights with reduced glare)
- Loading sill protection in chrome look
- Mercedes-Benz Emergency Call System (The Mercedes-Benz Emergency Call System can provide a decisive time advantage in an emergency. When an accident is detected, a communication module with its own SIM card automatically triggers an emergency call, which can shorten the time until emergency services arrive. The emergency call can also be triggered manually to organize assistance.)
- Active Brake Assist (Active Brake Assist can help prevent rear-end collisions with vehicles ahead or stationary vehicles, as well as accidents with moving pedestrians and cyclists. In addition to distance and collision warnings, it offers brake boosting—including autonomous emergency braking.)
- Active Lane Keeping Assist
- Adaptive High Beam Assistant
- Airbag for driver and front passenger
- Airbag: Kneebag for driver
- Airbag: Sidebag for driver and front passenger (combined thorax/pelvis bag)
- Airbag: Windowbags
- Ambient lighting (Design the interior according to your personal preferences or current mood. With a total of 64 colors, the ambient lighting offers almost unlimited lighting possibilities and has the right color for every situation. Illuminated door sills on the driver and passenger sides.)
- Anti-lock braking system (ABS)
- Charging cable for wallboxes and public charging stations, 5 m, smooth (This charging cable, also called a Mode 3 cable, allows you to charge your vehicle battery at a wallbox or public charging station with up to 11 kW (Type 2, 3-phase, 16 A).)
- Charging system: Alternating current charging system (AC charging) up to 11 kW (3-phase)
- Chassis: Comfort chassis with lowering
- Climate: THERMATIC automatic climate control (The THERMATIC automatic climate control regulates the desired temperature. Regardless of the season and outside temperature, you'll always feel comfortable in the vehicle. This helps you stay focused, even in midsummer conditions.)
- Cruise control (Drive in a relaxed and fuel-efficient manner, especially on longer journeys. To do this, select your desired speed and your vehicle will take over the cruise control. In addition to the travel speed, the limiter helps you to adhere to a maximum speed. This increases road safety and protects you from expensive traffic tickets.)
- EASY-Pack tailgate with electric operation for opening and closing
- Electric windows, front and rear
- Headrests (5)
- Interior headliner fabric black
- Luggage net on driver and passenger backrest
- Navigation accessories: Advanced MBUX functions (personalization (profiles) and prediction functions - LINGUATRONIC with natural language understanding - activation via "Hey Mercedes" - Wi-Fi hotspot - Internet radio - preparation for in-vehicle office functions (service available free of charge for 3 months from activation))



- Navigation accessories: Live Traffic Information pre-installation (With Live Traffic Information, your navigation system receives real-time traffic data and optimizes dynamic route guidance. Accurate and up-to-date information on traffic jams, stop-and-go traffic, and more helps you reduce travel times.)
- Navigation: Hard drive navigation (Mercedes-Benz look and feel of the navigation, all map data stored on the hard drive - fast hard drive navigation - destination input via touch function or voice control - route calculation including intermediate destinations - numerous route options and avoidance options - 3D image of the upcoming driving maneuver and lane recommendation - easy change of views from 2D to 3D and vice versa - compass - route recording function (requirement: a USB device is connected to the multimedia system))
- Package: Light and visibility package (roof control unit 4 light blocks (including glasses compartment) - interior light/reading light rear in mounting plate (rear/left/right) - touchpad lighting (front) - reading lights (front/left/right), console lighting - make-up lights (front/left/right) - signal and ambient light - signal exit light (front/left/right) - footwell lighting (front/left/right) - cup holder/storage compartment lighting)
- Radio accessories: Digital radio
- Radio accessories: Touchpad (integrated into the center console, including a palm rest - single and multi-finger gestures, swiping movements and zoom gestures by spreading and pinching the fingers - recognizes handwritten characters: letters, special characters and numbers - clear haptic feedback)
- Rear view camera (with dynamic guide lines on the display)
- Seats: 4-way lumbar support for driver and front passenger
- Seats: Comfort seats (the comfort seat offers you good long-distance comfort and comprehensive adjustments in length and height. You can also change the inclination of the seat surfaces and even extend them. The selection of upholstery and optional comfort functions such as seat climate control or multi-contour seats is also impressive.)
- Speed Limit Assist (The Speed Limit Assist makes it easy for you to comply with speed limits and avoid unnecessary fines. The system shows you what's permitted: It can detect the current speed limit via the camera and display it in the instrument cluster. It also detects additional speed limit signs for special weather conditions, such as wet conditions.)
- Tire pressure monitoring (Tyre pressure monitoring system (TPMS) with wheel-specific display in the instrument cluster - sensors installed in the wheels - send radio signals with information about pressure and temperature while driving)
- TIREFIT with tire inflation compressor
- Vehicle key set (1 vehicle key in black with chrome decorative frame and 1 vehicle key in black with rose gold decorative frame)
- Windscreen wipers with rain sensor
- Navigation accessories: Pre-installation for remote and navigation services (Remote & navigation services bundle the basic services for EQ vehicles in one package: -Navigation optimized for Mercedes-Benz EQ - Range on Map (range display) - Charging station display (information on availability) - Programming of charging settings and pre-conditioning including remote query of charging status and range)
- Outdoor thermometer
- Package: Cargo Compartment (Chrome-look loading sill protector. Transport everyday and leisure items even more conveniently and safely. The cargo compartment package combines additional storage and connection options, such as a 12V socket. Your car gains versatility and becomes a mini charging station. It can power your cooler bag for shopping or a trip to the beach, for example.)
- Package: Seat comfort (passenger seat height adjustment - seat cushion inclination adjustment for the driver and passenger seats - seat cushion depth adjustment for improved seating comfort thanks to a 60 mm larger support surface for the thighs - specific seat design)
- Power socket: 12V socket in the luggage compartment
- Radio: MBUX multimedia system (17.78 cm diagonal instrument display, 17.78 cm diagonal media display with touch function, touch control buttons on the steering wheel, radio, USB port in the center console under the armrest, Bluetooth telephony with contact transfer and audio streaming of music files, display of vehicle functions (driver assistance systems, driving programs, and vehicle settings), favorites storage, smartphone-related voice control - activated by long-pressing the voice button on the steering wheel)
- Rear window wiper
- Remote and Charging Services Premium (pre-installation for Mercedes me Charge, pre-installation for IONITY: discounted fast charging, Mercedes me Services communication module (remote vehicle status query, auxiliary heating/ventilation programming, remote door locking and unlocking, sunroof/windows with remote closing and opening including ventilation function, personalization, vehicle location, vehicle tracking, geographical vehicle monitoring, parking service monitoring, tracking function, notification when driving at speed))
- Roof rails in polished aluminum
- Seats: Folding seat backrests in the rear (40/20/40 split)
- Steering wheel: Multifunction sports steering wheel in nappa leather (The multifunction sports steering wheel in nappa leather with chrome control panels has a flattened bottom and perforated grip area—an excellent qualification for sporty driving. You'll not only see this, but immediately feel it when you touch the steering wheel. The high-quality, soft nappa leather is a quality experience in itself.)
- Third brake light in LED technology
- Transmission: Direct drive
- Upholstery: ARTICO man-made leather / two-tone fabric



- Velour floor mats in black

Extra equipment

- Chassis: Comfort chassis
- Package: Advanced Plus (Fully digital instrument display, high-resolution 10.25" -Media display, high-resolution 10.25" -Mirror package, interior and exterior mirrors, automatically dimmable, electrically foldable exterior mirrors, ambient lighting for the exterior mirrors to illuminate the entry area -Parking package with rear view camera -Active parking assistant with PARKTRONIC -Automatic climate control THERMOTRONIC -KEYLESS-GO comfort package, KEYLESS-GO function, EASY-PACK tailgate -Wireless charging system for mobile devices in the front -Advanced sound system - 10 loudspeakers, 225 W)
- Package: MBUX Innovations Package (MBUX Interior Assistant: - 3D camera in the overhead control panel - Proximity sensors in the area of the touchscreen and touchpad - Head-up display)
- Wheels: 48.3 cm (19") AMG light-alloy wheels in 5-twin-spoke design (aerodynamically optimized, painted high-gloss black with a high-shine finish with 235/50 R 19 on 7.5 J x 19 ET 53.5)
- Sunroof: Panoramic sunroof (electric glass version with comfort and automatic rain closure - electric sunblind - anti-pinch protection and PRE-SAFE closing function)
- Partition net (This feature can protect you from insufficiently secured items in the luggage compartment. The partition net is very easy to use. You can attach or remove it in just a few steps.)
- Paint finish: metallic
- Package: Business Package (Connectivity Package Navigation - Traffic Sign Assistant - Seat heating for driver and front passenger - Smartphone integration - Preparation for digital key handover)
- Package: Driver Assistance Package (Distance Assist DISTRONIC - Speed Assist - Extended automatic restart on motorways - Route-based speed adjustment with traffic jam warning - Steering Assist - Emergency Stop Assist with SOS function - Emergency lane radio - Brake Assist - Turning and intersection function - Traffic jam warning function - Evasive steering assist - Lane keeping assist - Blind spot assist - Exit warning function - Pedestrian warning function)
- Package: Parking package with rear view camera (12 sensors: 4 front/rear, two on the side of the front/rear bumper - Rear view camera virtual guide lines along the outer contour of the vehicle in conjunction with the trailer coupling, trailer mode - additional display option with zoom function - Parking assistant PARKTRONIC (235): visual/acoustic warning of detected obstacles according to the distance and position in front of/behind and to the side of the vehicle up to approx. 10 km/h visual/acoustic warning when cross traffic is detected when reversing out of a parking space)
- Heat-insulating dark-tinted glass (all around from B-pillar)

Retrofitted equipment

- Seats: Passenger seat electrically adjustable with memory 242
- Seats: Driver's seat electrically adjustable with Mem 275

Brief expert findings

Documents submitted	At the time of the inspection, the registration certificate Part 2 (letter) was available, but the registration certificate Part 1 (certificate) was not. (Copy)
VIN comparison	The vehicle identification number (VIN) was read and the undersigned verified that it matched the documents submitted during the inspection.
Inspection	The inspection conditions were sufficient for the assessment of the vehicle. Lifting equipment and a pit were available for examining the vehicle.
Test drive	A short maneuvering and shunting trip was carried out on the company premises.
Engine function test	An engine test run was performed.

Value reducing factors

No.	Component group	Description
1	Side panel - rear right side	Sill - dent(s) - Smart repair
2	Trim / covers	Cowl - Scratch(es) - Replace
3	Door - front right side	Door edge - Scratch(es) - Smart repair
4	Engine cooling	Pipe (Dämmung) - Damage caused by marten / rodent - Replace
5	Mudguard - left side	Mudguard - left side (Farbunterschied) - Unprofessionally repaired - Paint
6	Door - front left side	Door (Farbunterschied) - Unprofessionally repaired - Paint



Wear and tear

No.	Component group	Description
1	Door - rear right side	Door edge - Scratch(es) - No deduction
2	Door - rear left side	Door - Stone chips - No deduction
3	Interior	Rear shelf - Abrasion - No deduction

The vehicle shows signs of wear commensurate with its age and use.

Previous damages

No.	Previous damage	Extent of damage (Net)
1	Side - left, Provided by user / customer, from 25 Oct 2022	2.401,77 €

Accident damages

No.	Accident
1	Rear

Repainting

No.	Repainting
1	Mudguard - left side, Unprofessionally carried out, Invoice of repair done Non-existent
2	Door - front left side, Unprofessionally carried out, Invoice of repair done Non-existent

Paint coat thickness measurement

Mudguard - left side	194 µm	Door - front left side	202 µm
----------------------	--------	------------------------	--------

Order/Scope of order

The order was placed to prepare a sales report for the vehicle described. This includes the following:

- Description of core relevant information about the vehicle
- Documentation of equipment features
(Delivery by third-party service providers)
- Documentation of damage, defects, missing parts
- Documentation of previous damage, unrepaired previous damage, repainting
- a brief visual or functional inspection of the equipment details if possible.
(Functional tests of driver assistance systems are not included in the scope of services!)
- a photo documentation of the vehicle



Basis for the order

This product is based on the Alphabet Fuhrpark GmbH guidelines for vehicle returns and valuations. The expert makes the explicit findings in each individual case objectively within the framework of the specified standards based on his or her own expertise.

The vehicle inspection takes place in a disassembled state.

Damage or defects that can only be detected during disassembly/diagnosis work or through advanced knowledge remain within the scope of the prognosis risk. An extended risk exists for concealed defects caused by fraudulent deception and not identifiable by the expert.

Damage or defects resulting from normal use or wear and tear of the vehicle will be accepted according to the applicable standard.

There was no explicit identification or monetary consideration of the expected features within the product.

Features which in their nature and severity slightly exceed normal use but do not constitute unacceptable damage will be documented and identified under signs of use if necessary.

Damage or defects which, according to the underlying standard, can no longer be attributed to normal use or wear and tear are listed in the product under "Depreciating Factors".

Depending on the product specification, a monetary ID can be provided. If this takes place, the costs can be 100% d or pro rata depending on the vehicle's age and mileage.

Previous damages

Non-repaired previous damages were found at the vehicle. The necessary repair costs are listed in the expert report or if necessary, are listed in detail in a separately enclosed repair cost calculation.

Comments

Die beigefügte Reparaturkostenkalkulation wurde nach bestem Wissen und Gewissen unter eingeschränkten Besichtigungsbedingung im demontagefreien Zustand erstellt. Es können aufgrund verdeckter Beschädigung erhebliche Mehrkosten und somit Abweichung der für den Unfall ausgewiesenen Reparaturkosten nicht ausgeschlossen werden.

Maderschaden im Motorraum. Mehrkosten können entstehen.



Figure 1: Diagonal front (left)



Figure 2: Diagonal front (right)



Figure 3: Diagonal rear (left)



Figure 4: Diagonal rear (right)



Figure 5: Interior - front



Figure 6: Interior - rear



Figure 7: Instrument cluster



Figure 8: Instrument panel



Figure 9: interior 360° view



Figure 10: Cargo area



Figure 11: VIN



Figure 12: Mounted tyres

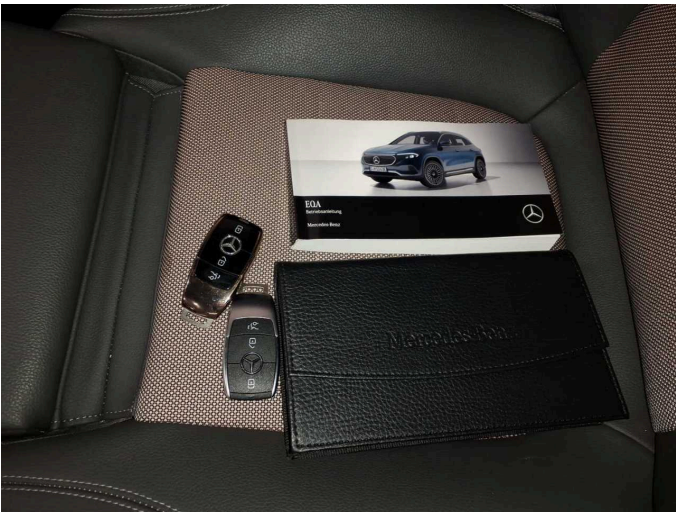


Figure 13: Documents



Figure 14: Documents



Figure 15: Documents

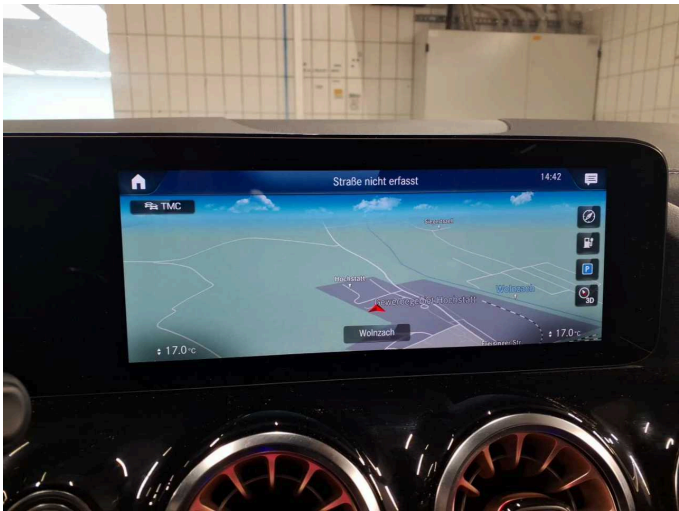


Figure 16: Navigation

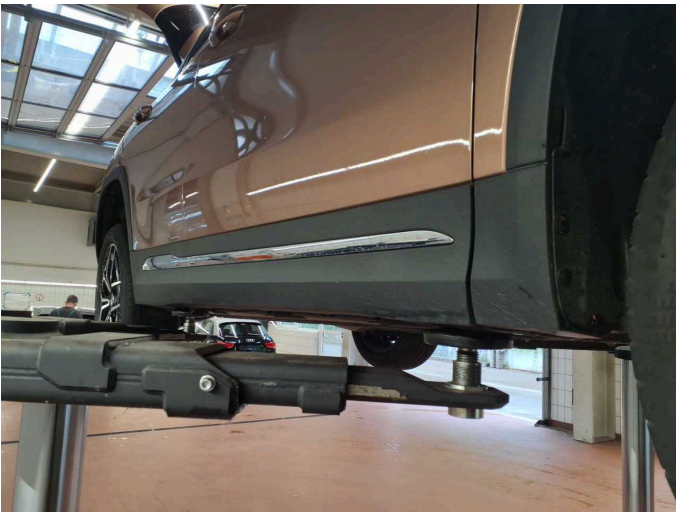


Figure 17: Misc.



Figure 18: Misc.



Figure 19: Misc.

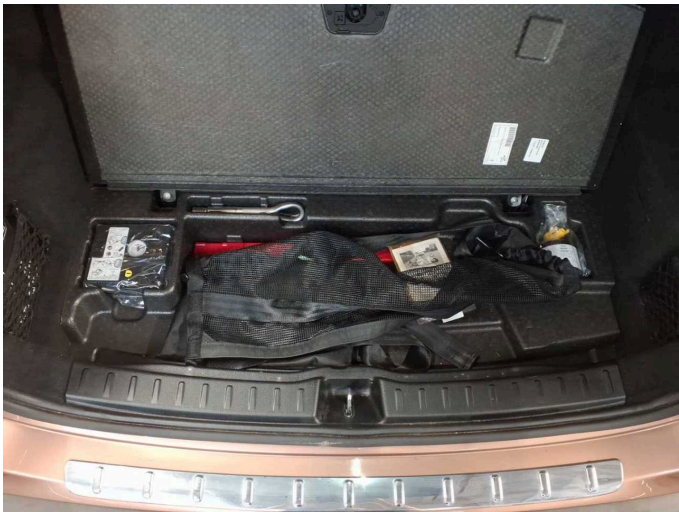


Figure 20: Misc.

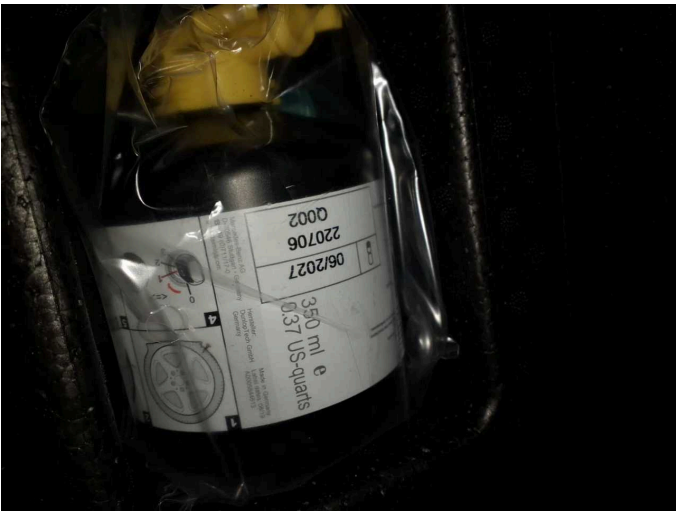


Figure 21: Misc.



Figure 22: Misc.



Figure 23: Misc.



Figure 24: Misc.



Figure 25: Misc.



Figure 26: Misc.



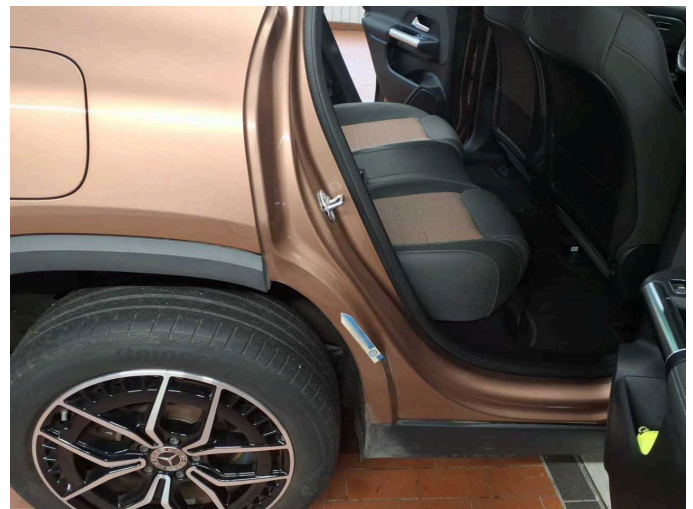
Figure 27: Misc.



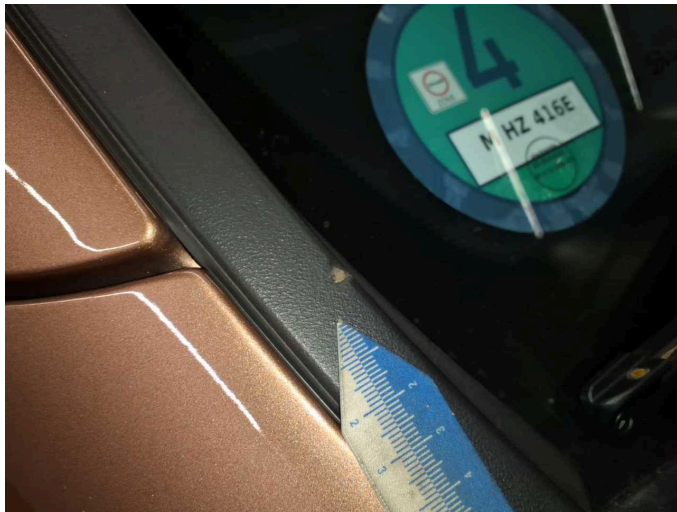
Figure 28: Misc.



Damage 1: Side panel - rear right side: Sill - dent(s) - Smart repair



Damage 1: Side panel - rear right side: Sill - dent(s) - Smart repair



Damage 2: Trim / covers: Cowl - Scratch(es) - Replace



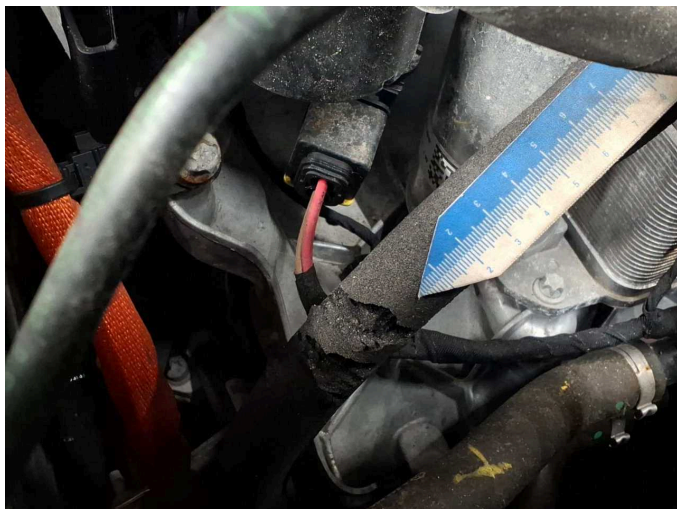
Damage 2: Trim / covers: Cowl - Scratch(es) - Replace



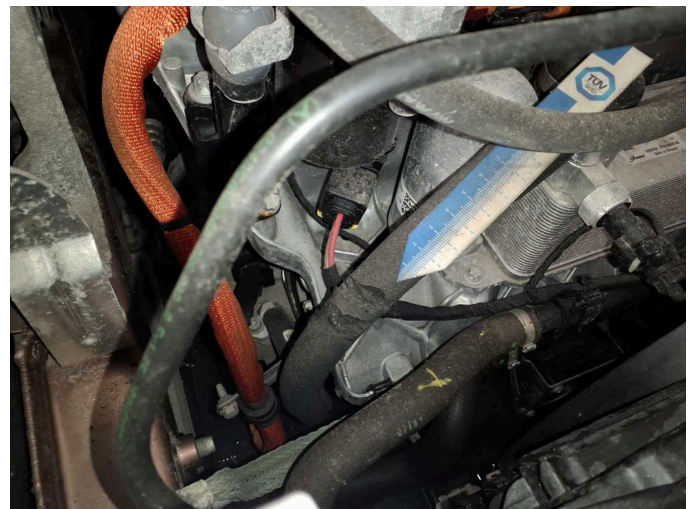
Damage 3: Door - front right side: Door edge - Scratch(es) - Smart repair



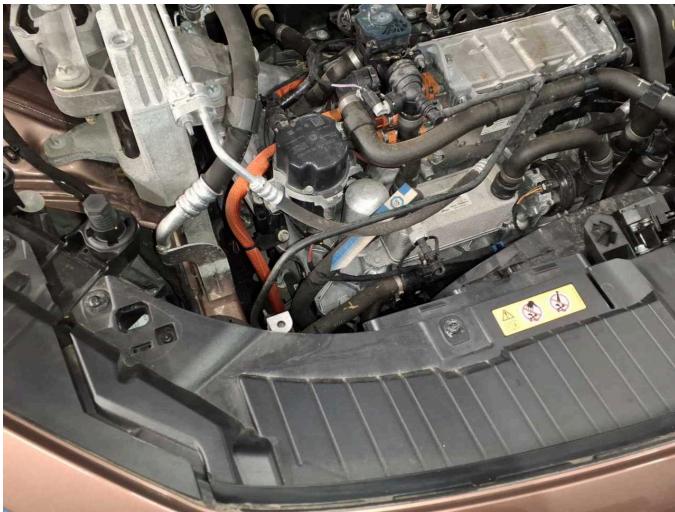
Damage 3: Door - front right side: Door edge - Scratch(es) - Smart repair



Damage 4: Engine cooling: Pipe (Dämmung) - Damage caused by marten / rodent - Replace



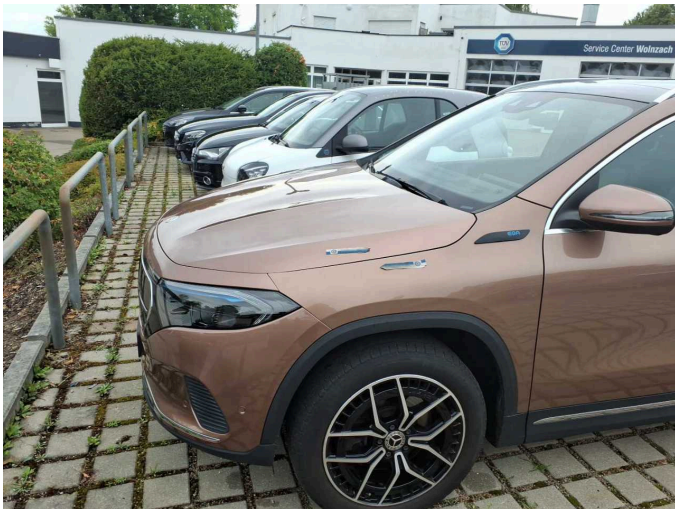
Damage 4: Engine cooling: Pipe (Dämmung) - Damage caused by marten / rodent - Replace



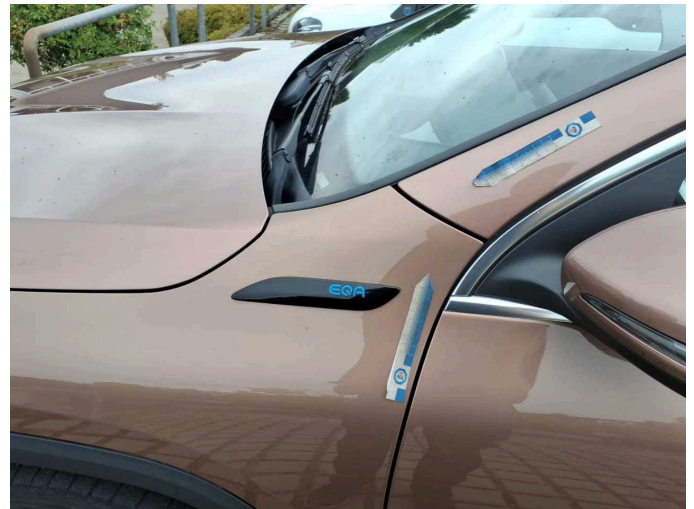
Damage 4: Engine cooling: Pipe (Dämmung) - Damage caused by marten / rodent - Replace



Damage 5: Mudguard - left side: Mudguard - left side (Farbunterschied) - Unprofessionally repaired - Paint



Damage 5: Mudguard - left side: Mudguard - left side (Farbunterschied) - Unprofessionally repaired - Paint



Damage 5: Mudguard - left side: Mudguard - left side (Farbunterschied) - Unprofessionally repaired - Paint



Damage 6: Door - front left side: Door (Farbunterschied) - Unprofessionally repaired - Paint



Damage 6: Door - front left side: Door (Farbunterschied) - Unprofessionally repaired - Paint



Accident 1: Rear



Accident 1: Rear



Accident 1: Rear



Accident 1: Rear



Accident 1: Rear



Accident 1: Rear



Accident 1: Rear



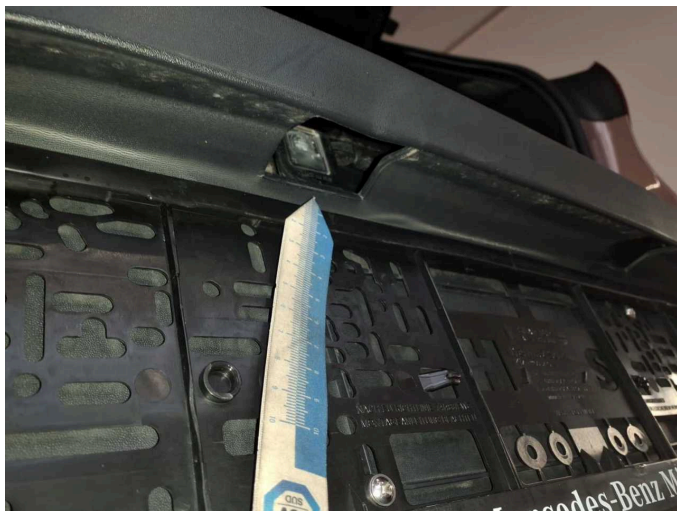
Accident 1: Rear



Accident 1: Rear



Accident 1: Rear



Accident 1: Rear



Accident 1: Rear



Accident 1: Rear



Accident 1: Rear



Accident 1: Rear



Accident 1: Rear



Accident 1: Rear



Accident 1: Rear



Repainting 1: Mudguard - left side



Repainting 2: Door - front left side



Wartungshistorie

(gemäß Auftraggeber Informationen)

Fahrgestellnummer: W1N2437081J037721

Hersteller / Modell: MERCEDES-BENZ MB EQA 300 4Matic Electric Art

Datum	KM-Stand	Beschreibung
02.09.2024	29.600	Regelwartungsdienst
21.07.2023	16.843	Regelwartungsdienst