



MERCEDES-BENZ GLS
GLS 400 d 4Matic 9G-TRONIC

VIN NO W1N1679231A266758
Registration Number 231A266758



MOT Date

2025-12-01

Last Service



Number of Owners

2

Last Service Mileage



Number of Keys

2

First Registration Date

2020-09-16

Odometer Reading

96220 km

Country First Registered

Germany

Inspection Report Summary

Customer	BCA Online	Report Number	P20250516092010
Inspection Date / Place	2025-05-16 / BCA Neuss	Cosmetic Grade	4

Vehicle Summary

Vehicle Condition	Runner	VAT Type	Margin
Fuel Type	Diesel	Road Worthy	Yes
Colour	White	Engine Size (cc)	2925
Engine Size	2.9	No of Doors	5
Body Type	SUV	Drive Train	All-Wheel-Drive permanent
Seat Colour		No of Seats	7
Seat Covering Name	Beige	Seat Covering	Leather
Charging Cables		WLTP CO2 Emissions	
Gearbox Type	Automatic		

Vehicle History & Documents

Service Book Available	Missing	Next Service Mileage	km
Previous Usage		Imported	No
Manufacturer Warrenty			







Equipment

Tinted Glass	360°camera	Alloys wheels	Anti-lock braking
Cruise control	Digitaldashboard	Front parking sensors	Remote adjusting wing mirrors
Reversing Camera	Satellite navigation	Stability control	Electrically adjustable seats
Electricbackseatadj.	Emergencybrakeassist	Leather steering wheel	Radio
Trafficsignrecognition	Airbag Status	Ambientlighting	Bluetooth telephone interface
Diesel particulate filter	Enhanced speaker system	MassageSeats	Remote central locking
Roof rails	Seatventilation	Sunroof	Electrically folding wing mirrors
Electrictailgate	Laneassist	LED Headlamps	Rear parking sensors

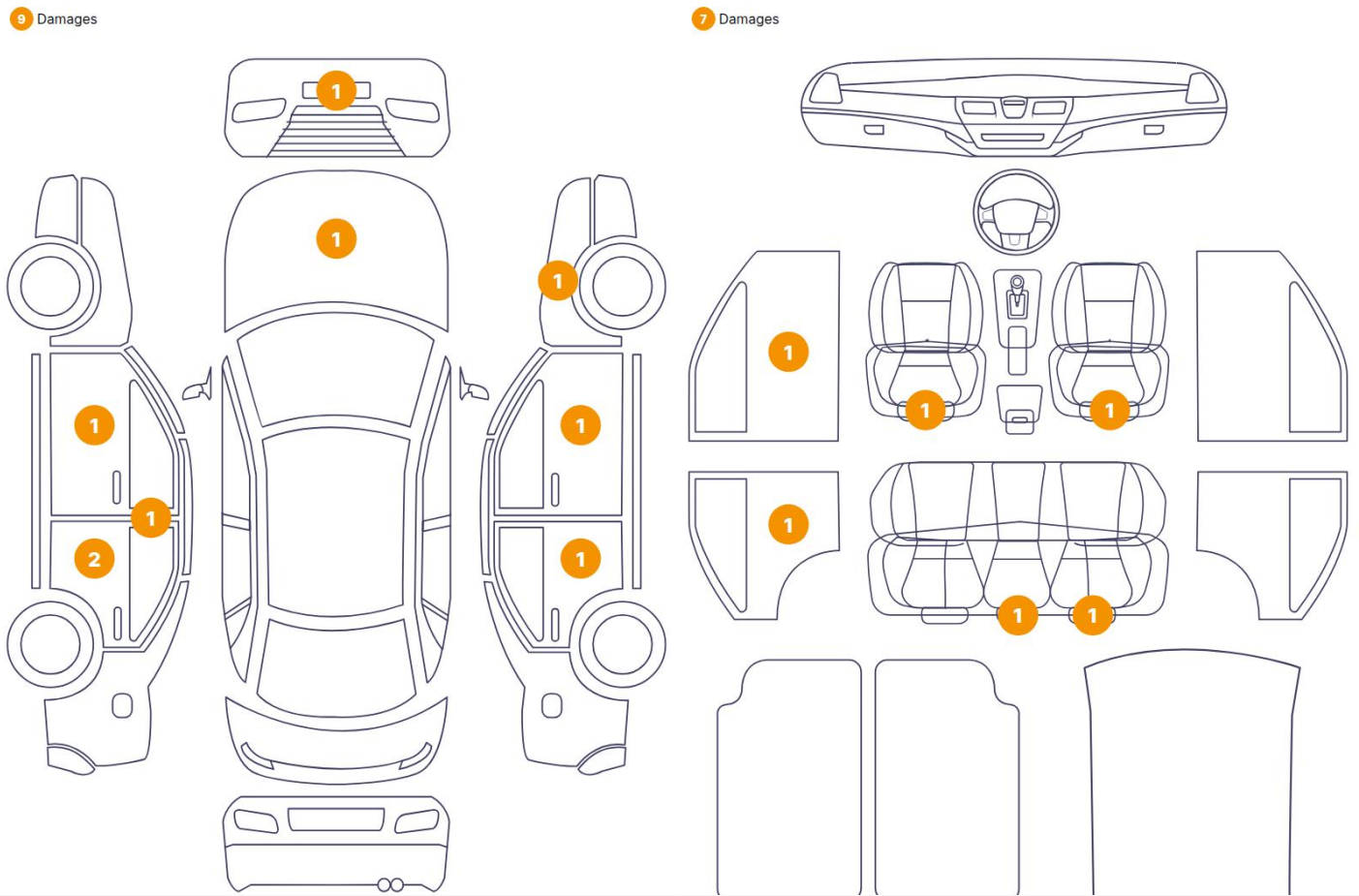
Equipment Details

Air Conditioning	Four Zone Climate Control	Alloy Wheel Size	22
Enhanced Speaker System	Burmester	Seat Heating	Front and Rear
Sunroof Type	Opening Panoramic		

Wheels & Tyres

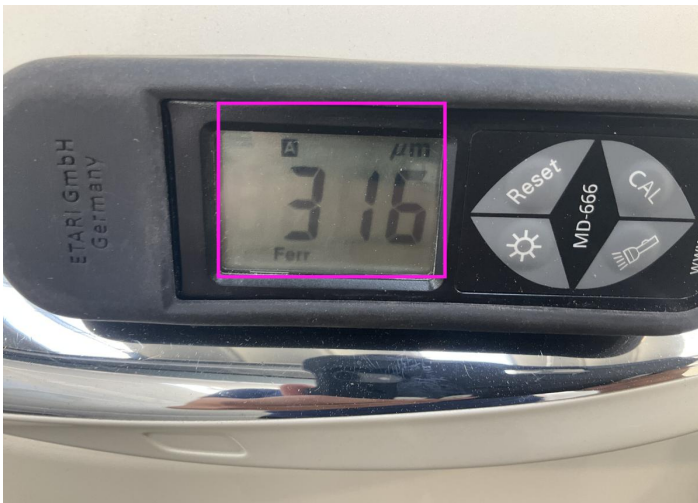
Right Rear Tyre Depth	6	Left Rear Tyre Depth	6
Right Front Tyre Depth	6	Left Front Tyre Depth	6

Cosmetic Damage



Component		Damage	Comments
1	Door / Front Right	Paint / Poor Previous Repair	
2	Hood	Bodywork / Dent / Dent	
3	Bumper / Front	Paint / Stone Chip	
4	Door / Front Left	Paint / Scratch / Scuff	
5	Panel Filling / Front Left	Interior / Scraped	
6	Seat / Front Left	Interior / Scraped	
7	B Pillar / Center Left	Bodywork / Dent / Dent	
8	Door / Back Left	Bodywork / Dent / Dent	
9	Door / Back Left	Paint / Scratch / Scuff	
10	Panel Filling / Back Left	Interior / Scraped	
11	Seat / Back Center	Interior / Dirty	
12	Tailgate Upholstery / Back	Interior / Scraped	
13	Door / Back Right	Paint / Scratch / Scuff	

14	Seat Cushion / Back Right	Interior / Broken
15	Seat / Front Right	Interior / Scraped
16	Fender / Front Right	Paint / Scratch / Scuff



1. Door / Front Right
Paint / Poor Previous Repair -



2. Hood
Bodywork / Dent / Dent -



3. Bumper / Front
Paint / Stone Chip -



4. Door / Front Left
Paint / Scratch / Scuff -



5. Panel Filling / Front Left
Interior / Scraped -



6. Seat / Front Left
Interior / Scraped -



7. B Pillar / Center Left
Bodywork / Dent / Dent -



8. Door / Back Left
Bodywork / Dent / Dent -



9. Door / Back Left
Paint / Scratch / Scuff -



10. Panel Filling / Back Left
Interior / Scraped -



11. Seat / Back Center
Interior / Dirty -



12. Tailgate Upholstery / Back
Interior / Scraped -



13. Door / Back Right
Paint / Scratch / Scuff -



14. Seat Cushion / Back Right
Interior / Broken -



15. Seat / Front Right
Interior / Scraped -



16. Fender / Front Right
Paint / Scratch / Scuff -

Mechanical Condition

Equipments Test

Central Locking	✓	Electric Windows	✓
Navigation System	✓	Audio Equipment	✓
AC / Heating System	✓	Main & Spare Keys Functioning	✓
Parking Sensors / Cameras Functioning	✓	Other Equipments	✓

Control Lights

ABS Warning Light	✓	ESP Fault/Traction Control Malfunction Light	✓
Diesel Particulate Filter Light	✓	Airbag Warning Light	✓
Oil Pressure Warning Light	✓	Brake Warning Light	✓
Power Steering Warning Light	✓	Alternator / Battery	✓
All - wheel Drive	✓	No Dashboard Lights	✓
Display Defect	✓	Service Light	!
Tire Pressure Monitoring System	✓		

Engine

Engine Status / EML	✓	Engine Leak Visible	✓
Engine Starts	✓		

Gearbox

Gear Box	✓
----------	---

Levels

Coolant Fluid	✓	Brakes Fluid	NA
---------------	---	--------------	----

Test Drive Inspection

Steering Wheel			
Steering Noise / Anomaly		✓	
Engine			
Engine Noise	✓	The Gears Scratch / Skip / Abnormal Operation	✓
Fume Quantity	✓	Power Loss	✓
Brake			
Brake System Anomaly		✓	
General			
Test Driven Status		✓	
✓ <i>No troubles detected, good condition or correct tests, according to vehicle age and mileage</i>			
! <i>Damages or malfunction detected that requires repairs by the buyer</i>			
NA <i>Not applicable</i>			
= <i>Not tested</i>			

Disclaimer

Please also note the "UserGuide condition report", which shows the scope of the vehicle description.

[User Guide](#)