



MERCEDES-BENZ GLE-Coupe

GLE-Coupe 350 e 4Matic 9G-TRONIC

VIN NO W1N1673541A502020
Registration Number 541A502020



MOT Date	Number of Owners	Number of Keys	Odometer Reading
2026-08-01	1	2	69167 km
Last Service	Last Service Mileage	First Registration Date	Country First Registered
-	-	2021-08-25	Germany

Inspection Report Summary

Customer	BCA Online	Report Number	P20250924132859
Inspection Date / Place	2025-09-24 / BCA Neuss	Cosmetic Grade	4

Vehicle Summary

Vehicle Condition	Runner	VAT Type	Qualifying
Fuel Type	Plug - in Hybrid Electric Vehicle Petrol	Road Worthy	Yes
Colour	White	Engine Size (cc)	1991
Engine Size	2.0	No of Doors	5
Body Type	SUV	Drive Train	All-Wheel-Drive permanent
Seat Colour		No of Seats	5
Seat Covering Name	Beige	Seat Covering	Leather
Charging Cables	Type 2	WLTP CO2 Emissions	
Gearbox Type	Automatic		

Vehicle History & Documents

Service Book Available	Missing	Next Service Mileage	km
Previous Usage		Imported	No
Manufacturer Warrenty			









Equipment

Tinted Glass	Airbag Status	Ambientlighting	Bluetooth telephone interface
Digital Radio	Front parking sensors	Remote central locking	Satellite navigation
Sunroof	Electrically folding wing mirrors	Emergencybrakeassist	Leather steering wheel
Radio	Tow ball	Alloys wheels	Anti-lock braking
Cruise control	Digitaldashboard	Remote adjusting wing mirrors	Reversing Camera
Stability control	Electrically adjustable seats	Electrictailgate	Laneassist
LED Headlamps	Rear parking sensors		

Equipment Details

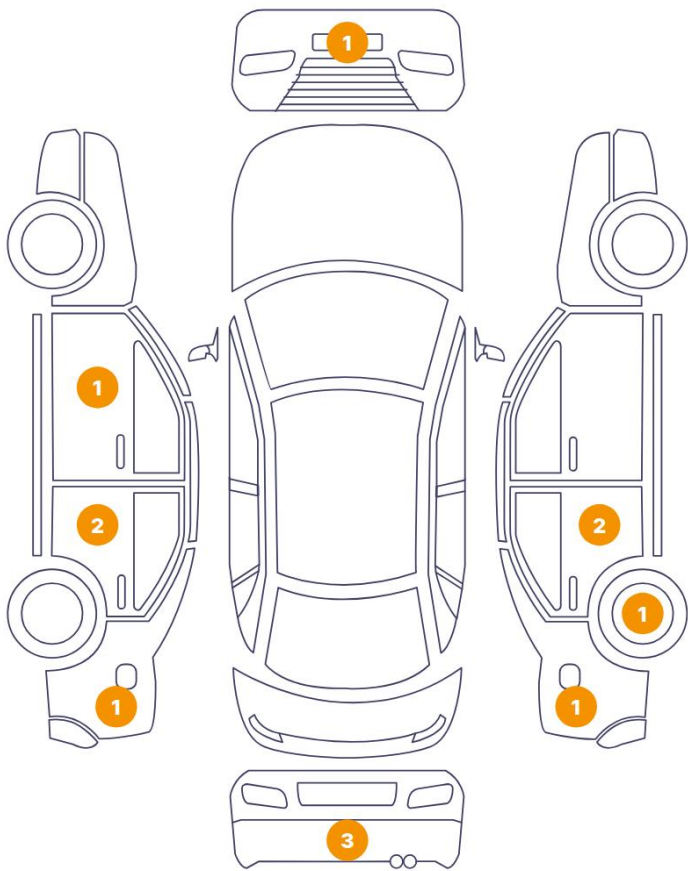
Tow Ball Type	Electronic	Air Conditioning	Four Zone Climate Control
Alloy Wheel Size	20	Seat Heating	Front and Rear
Sunroof Type	Opening Panoramic		

Wheels & Tyres

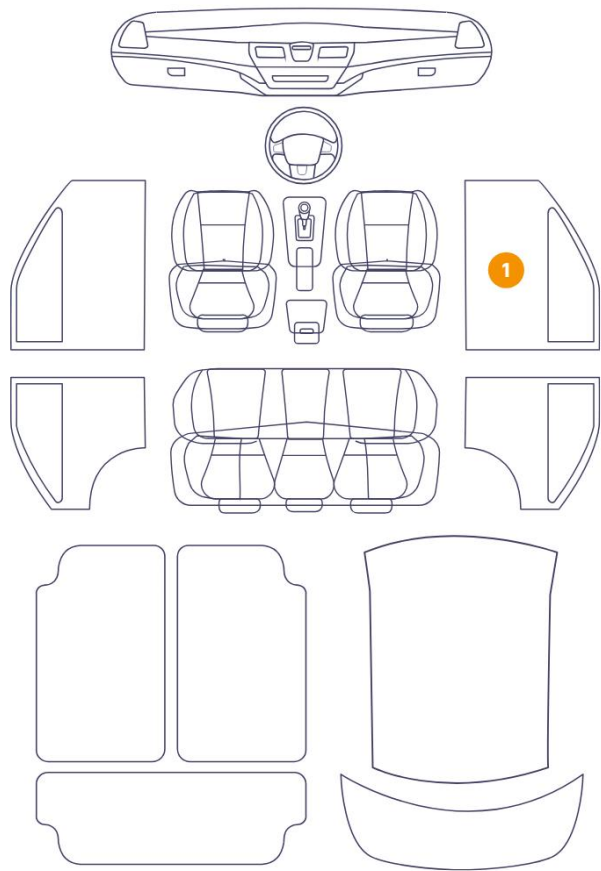
Right Front Tyre Depth	5	Left Front Tyre Depth	5
Right Rear Tyre Depth	5	Left Rear Tyre Depth	5

Cosmetic Damage

12 Schäden



1 Schäden



Component		Damage	Comments
1	Door / Front Left	Paint / Stone Chip	
2	Door / Back Left	Paint / Stone Chip	
3	Pillar / Back Left	Bodywork / Dent / Dent	
4	Side Panel / Back Left	Bodywork / Dent / Dent	
5	Bumper / Back	Paint / Scratch / Scuff	
6	Bumper / Back	Paint / Scratch / Scuff	
7	Bumper / Back	Paint / Scratch / Scuff	
8	Side Panel / Back Right	Paint / Scratch / Scuff	
9	Rim / Back Right	Out of Bodywork / Scratch	
10	Door / Back Right	Bodywork / Dent / Dent	
11	Pillar / Back Right	Bodywork / Dent / Dent	
12	Panel Filling / Front Right	Interior / Scratched	

13 Bumper / Front

Paint / Stone Chip



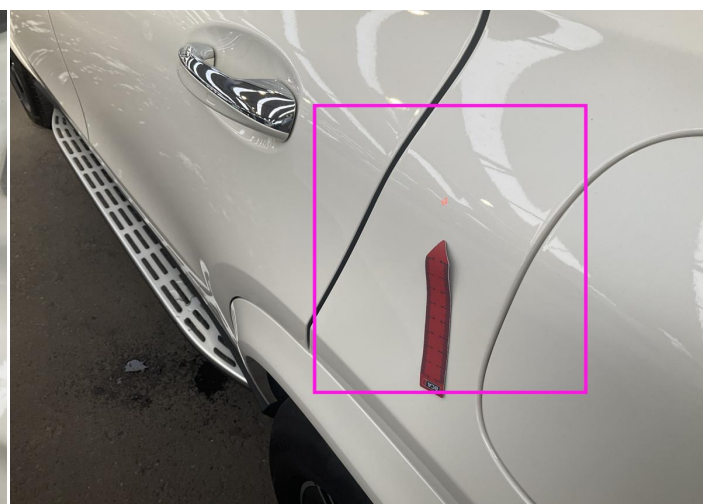
1. Door / Front Left
Paint / Stone Chip -



2. Door / Back Left
Paint / Stone Chip -



3. Pillar / Back Left
Bodywork / Dent / Dent -



4. Side Panel / Back Left
Bodywork / Dent / Dent -



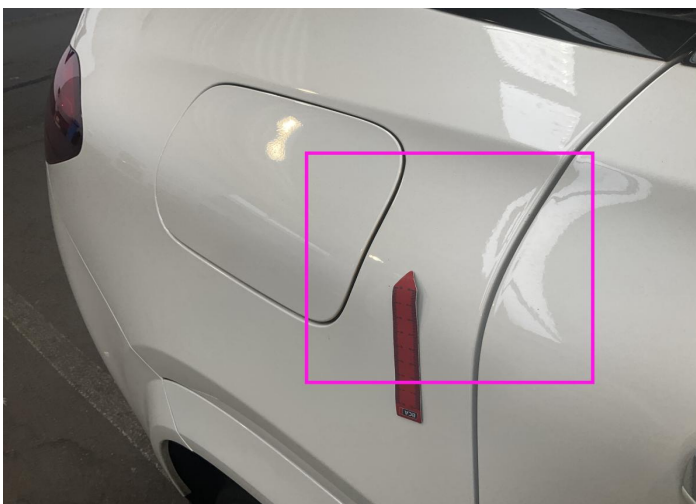
5. Bumper / Back
Paint / Scratch / Scuff -



6. Bumper / Back
Paint / Scratch / Scuff -



7. Bumper / Back
Paint / Scratch / Scuff -



8. Side Panel / Back Right
Paint / Scratch / Scuff -



9. Rim / Back Right
Out of Bodywork / Scratch -



10. Door / Back Right
Bodywork / Dent / Dent -



11. Pillar / Back Right
Bodywork / Dent / Dent -



12. Panel Filling / Front Right
Interior / Scratched -



13. Bumper / Front
Paint / Stone Chip -

Mechanical Condition

Control Lights

ABS Warning Light	✓	ESP Fault/Traction Control Malfunction Light	✓
Airbag Warning Light	✓	Oil Pressure Warning Light	✓
Brake Warning Light	✓	Power Steering Warning Light	✓
Alternator / Battery	✓	All - wheel Drive	✓
No Dashboard Lights	✓	Display Defect	✓
Service Light	!	Tire Pressure Monitoring System	✓

Engine

Engine Status / EML	✓	Engine Leak Visible	✓
Engine Starts	✓		

Gearbox

Gear Box	✓
----------	---

Equipments Test

AC / Heating System	✓	Central Locking	✓
Main & Spare Keys Functioning	✓	Electric Windows	✓
Navigation System	✓	Audio Equipment	✓
Parking Sensors / Cameras Functioning	!	Other Equipments	✓

Levels

Brakes Fluid	✓	Coolant Fluid	✓
--------------	---	---------------	---

Hybrid/EV

Charge Lead Condition	✓	Charge Port Condition	✓
Hybrid System Fault	✓		

Test Drive Inspection

Steering Wheel

Steering | Noise / Anomaly

Engine

Engine Noise The Gears Scratch / Skip / Abnormal Operation

Fume Quantity Power Loss

Brake

Brake System Anomaly

Gearbox

Automatic Shift

General

Test Driven Status

- No troubles detected, good condition or correct tests, according to vehicle age and mileage
- Damages or malfunction detected that requires repairs by the buyer
- Not applicable
- Not tested

Disclaimer

Please also note the "UserGuide condition report", which shows the scope of the vehicle description. [User Guide](#)