



Expertise

Protocol number: 41566718  
Order No. / Reference: 24953593  
Inspection date: 16 Sept 2025

Manufacturer: Mercedes-Benz

Model: GLE 350 de 4Matic 9G-TRONIC AMG Line

VIN: W1N1671171A668254



Vehicle details	
Manufacturer / Type / Model / Equipment	
Mercedes-Benz GLE 350 de 4Matic 9G-TRONIC AMG Line	
Vehicle Identification number	W1N1671171A668254
Mileage (Read)	86,936 km
First registration	8 Apr 2022
Number of holders	1
Next periodical technical inspection	05/2027
(Report on hand)	
Power / Engine displacement	143 kw / 1,950 ccm
Fuel type / Cylinder	Hybr.D/E ext. edition / 4
Gearbox / Number of gears	Automatic / 9
Type of drive	All-wheel drive
Type of vehicle	SUV
Colour / colour code	Hightechsilber
Doors / Seats	5 / 5
Upholstery type	Alcantara / Leather
Colour of upholstery	Black-Anthracite
Vehicle with smoke odor	no
Driving readiness	Not roadworthy / moveable



## Vehicle details

<b>Maintenance booklet / proof</b>	digital proof / complete	<b>Next maintenance in</b>	234 Tag(e)
<b>Last maintenance on / at</b>	05/2025 at 72,108 km		
<b>Key is / should be</b>	2 / 2	<b>FZG documents</b>	ZB#2 (B) was available (copy), ZB#1 (S) was not available
		<b>Letter No.</b>	GF813195
<b>Previous damage / Accident</b>	None detectable	<b>Repainting</b>	None detectable
<b>Inspection conditions</b>	sufficient	<b>Lifting equipment / pit</b>	yes
<b>Test drive</b>	Not performed	<b>Engine function test</b>	Performed
<b>Driving readiness</b>	Not roadworthy / moveable		
<b>Manufacturer key number/ type code number</b>	2222 / AFH 00094		
<b>Emission standard</b>	EURO6;WLTP;AP;PI/CI; M, N1 I	<b>Fine dust sticker</b>	
<b>Permitted total weight</b>	3,260 kg	<b>Empty weight</b>	

## Tyres

### Mounted tyres

#	Tyre size	Type of tyre	Manufacturer	Tread depth
1)	275/45 R21 110Y	Summer tyres on Light alloy	Goodyear	4mm / 4mm
2)	315/40 R21 111Y	Summer tyres on Light alloy	Continental	5mm / 5mm

### Additional tyres

#	Tyre size	Type of tyre	Manufacturer	Tread depth
1)	275/50 R20 113V	Winter tyres on Light alloy	Continental	5mm / 5mm
2)	275/50 R20 113V	Winter tyres on Light alloy	Continental	6mm / 6mm

**Legend: Tread depth information for tires on the left is in the first place, for tires on the right is in the second place on the axle in the direction of travel**



## Equipment

### Standard equipment

- Exhaust system with 2 chrome-plated tailpipe trims
- Adaptive High Beam Assistant
- Airbag: driver and passenger side
- Airbag: Sidebag for driver and front passenger (combined thorax/pelvis bag)
- Active Lane Keeping Assist
- 4MATIC permanent all-wheel drive
- AMG floor mats in black velour with "AMG" lettering
- Anti-lock braking system
- Traction control (ASR)
- Armrest in the rear
- Automatic passenger airbag deactivation
- Brake Assist BAS
- diesel particulate filter
- tachometer
- EASY-Pack tailgate with electric operation for opening and closing
- Front door sills with "Mercedes-Benz" lettering illuminated in white
- Chassis with steel suspension and lowering
- Electric parking brake
- Transmission: 9G-TRONIC
- Rear window heated
- Rear window wiper with interval control
- KEYLESS-GO start function
- Climate: THERMATIC automatic climate control
- 5-way headrests
- Radiator cover with 2 chrome-plated slats in SUV design
- Charging cable for wallbox and public charging stations, 5m, smooth
- Steering wheel: Multifunction sports steering wheel in nappa leather
- Mercedes-Benz emergency call system
- Navigation accessories: Pre-equipment for navigation services
- Package: Chrome package interior
- Package: Public Charging
- Upholstery: ARTICO man-made leather/DINAMICA microfiber
- Radio accessories: Additional USB interfaces
- Remote Services Plus
- Rear view camera
- Power steering
- Seats: 4-way lumbar support for driver and front passenger
- Seats: Folding seat backrests in the rear
- Phone accessories: Smartphone integration
- Cruise control with variable speed limiter
- Immobiliser
- Heat-insulating glass, all around
- Decorative elements: brushed aluminum with light longitudinal grain
- ADAPTIVE BRAKE
- Adaptive brake light
- Airbag: Kneebag for driver
- Airbag: Windowbags
- Active Brake Assist
- Acoustic environmental protection
- Ambient lighting
- AMG sports pedal system made of brushed stainless steel with black rubber studs
- Foldable armrest for driver and passenger
- ATTENTION ASSIST
- Exterior mirrors electrically adjustable and heated
- Roof rails in aluminum look
- Downhill speed regulation (DSR)
- Third brake light
- EASY-Pack load compartment cover (removable)
- ECO start-stop function
- Electronic Stability Program
- Electronic Traction System for All-Wheel Drive (4ETS)
- Electric windows, front and rear
- Speed Limit Assistant
- Lockable, air-conditioned and illuminated glove compartment
- Interior headliner fabric crystal grey
- Mechanical child safety locks in the rear doors
- Communication module (LTE) for the use of Mercedes me connect services
- Charging cable for household socket, 5m, smooth
- Charging system: AC on-board charger 7.4 kW (AC)
- LED high-performance headlights
- Steering column mechanically adjustable for length and height
- Navigation accessories: Advanced functions MBUX
- Navigation: Hard drive navigation
- Package: Chrome
- Package: Parking package with rear view camera
- Package: Mirror Package
- PRE-SAFE system
- Radio accessories: Digital radio (DAB)
- Tire pressure monitoring (TPMS)
- Wheels: 48.3 cm (19") light alloy wheels, 4-spoke design
- Windscreen wipers with rain sensor
- 3-point seat belts
- Seats: Heated seats for driver and passenger seats
- Seats: Sports seats for driver and front passenger with specific seat graphics
- High-visibility vest for drivers
- Widescreen cockpit
- Central locking with interior switch



## Extra equipment

- Decorative elements: anthracite open-pore oak wood
- Heat-insulating dark tinted glass
- Interior headliner fabric black
- Load compartment cover (with additional partition net.)
- Package: AMG Line Interior
- Package: Driving Assistance Package (Active Distance Assist DISTRONIC - Active Steering Assist - Active Brake Assist - Evasive Steering Assist - Active Lane Keeping Assist - Active Blind Spot Assist - PRE-SAFE PLUS)
- Package: Parking package with 360° camera (12 sensors: four at the front, four at the rear, two on the sides in the front/rear bumper. Detects parking spaces up to 35 km/h, controls the steering, in conjunction with automatic assists with accelerating, braking, and gear changes. 360° camera. Visual/acoustic warning of detected obstacles in front of/behind the vehicle up to approx. 10 km/h. Rear Cross Traffic Alert warns of detected cross traffic. Drive Away Assist (only in conjunction with automatic transmission). Button on the center console or on the control panel for the assistance systems.)
- Paint finish: metallic
- Wheels: 53.3 cm (21") AMG multi-spoke light-alloy wheels (painted Himalayan grey with a high-sheen finish, front axle 275/45 R 21 on 10 J x 21 ET 54, rear axle 315/40 R 21 on 11 J x 21 ET 49)
- Winter wheels: 275/50 R 20 V
- Package: AMG Line Exterior (diamond grille with chrome pins, integrated Mercedes star and 1 slat painted in matt iridium silver with chrome inserts - AMG Styling: AMG front apron with chrome trim, sporty, distinctive air intakes in the wheel arch trim, front and rear fender flares in body color, AMG side skirts, AMG rear apron with diffuser insert in black look and chrome trim - AMG LMR in 5-twin-spoke design, tremolite gray painted and high-gloss with front 275/50 R 20 on 9 J x 20 ET 57, rear 275/50 R 20 on 9 J x 20 ET 44)
- Radio accessories: Burmester surround sound system (with 13 speakers and 590 watts of system power. Experience enhanced performance and exclusivity with the legendary Burmester sound. The high-performance speakers produce first-class surround sound. You can optimize this specifically for the front and rear seats, intensifying the listening experience. A quality that's also visible thanks to the high-quality Burmester logo.)
- URBAN GUARD Vehicle Protection Plus (burglary and theft alarm system - towing protection with visual and acoustic warning when a change in position is detected - alarm siren - interior security (triggered when movement is detected in the interior) - vehicle theft assistance (theft assistance), free to use for 3 years from activation - emergency key deactivation, free to use for 3 years from activation - theft and parking collision detection, free to use for 3 years from activation - URBAN GUARD label on the front side windows)

## Brief expert findings

Documents submitted	At the time of the inspection, the registration certificate Part 2 (letter) was available, but the registration certificate Part 1 (certificate) was not. (Copy)
VIN comparison	The vehicle identification number (VIN) was read from the vehicle and its conformity with the submitted documents was verified during the inspection by the undersigned.
Inspection	The inspection conditions were sufficient for the assessment of the vehicle. Lifting equipment and a pit were available for examining the vehicle.
Test drive	No test drive/maneuvering was carried out during the inspection of the vehicle.
Engine function test	An engine test run was performed.
Driving readiness	At the time of inspection, the vehicle was not drivable under its own power, but can be moved on its own axle with the aid of auxiliary equipment.

## Value reducing factors

No.	Component group	Description
1	Bonnet	Bonnet - dent(s) - Smart repair
2	Side panel - rear right side	Wheel well extension - Stone chips - Smart repair
3	Mudguard - right side	Mudguard - right side - dent(s) - Smart repair
4	Boot lid / rear door	Boot lid - dent(s) - Smart repair
5	Side panel - rear right side	Side panel - Scratch(es) - Loss in value
6	Wheel / tyres	Tyre - rear right side - Damaged - Replace
7	Rear bumper	Rear bumper - Scratched - Paint
8	Wheel / tyres	Alloy rim - front left side - Scratched - Loss in value



No.	Component group	Description
9	Front bumper	Front bumper - Scratched - Paint
10	Door - front right side	Door (+ Kratzer) - Dent / paintcoat damage - Paint
11	Bonnet	Bonnet - Scratch(es) - Paint

## Wear and tear

No.	Component group	Description
1	Vehicle glazing	Windscreen - Stone chips - No deduction
2	Door - rear left side	Door - dent(s) - No deduction

The vehicle shows signs of wear commensurate with its age and use.

## Order/Scope of order

The order was placed to prepare a sales report for the vehicle described. This includes the following:

- Description of core relevant information about the vehicle
- Documentation of equipment features  
(*Delivery by third-party service providers*)
- Documentation of damage, defects, missing parts
- Documentation of previous damage, unrepaired previous damage, repainting
- a brief visual or functional inspection of the equipment details if possible.  
(*Functional tests of driver assistance systems are not included in the scope of services!*)
- a photo documentation of the vehicle

## Basis for the order

This product is based on the Alphabet Fuhrpark GmbH guidelines for vehicle returns and valuations. The expert makes the explicit findings in each individual case objectively within the framework of the specified standards based on his or her own expertise.

The vehicle inspection takes place in a disassembled state.

Damage or defects that can only be detected during disassembly/diagnosis work or through advanced knowledge remain within the scope of the prognosis risk. An extended risk exists for concealed defects caused by fraudulent deception and not identifiable by the expert.

Damage or defects resulting from normal use or wear and tear of the vehicle will be accepted according to the applicable standard.

There was no explicit identification or monetary consideration of the expected features within the product.

Features which in their nature and severity slightly exceed normal use but do not constitute unacceptable damage will be documented and identified under signs of use if necessary.

Damage or defects which, according to the underlying standard, can no longer be attributed to normal use or wear and tear are listed in the product under "Depreciating Factors".

Depending on the product specification, a monetary ID can be provided. If this takes place, the costs can be 100% d or pro rata depending on the vehicle's age and mileage.

## Previous damages

Apparently, no repaired previous damage could be found on the vehicle.





**Figure 1:** Diagonal front (left)



**Figure 2:** Diagonal front (right)



**Figure 3:** Diagonal rear (left)



**Figure 4:** Diagonal rear (right)



**Figure 5:** Interior - front



**Figure 6:** Interior - rear





Figure 7: Instrument cluster



Figure 8: Instrument panel



Figure 9: Interior 360° view



Figure 10: Cargo area



Figure 11: VIN



Figure 12: Mounted tyres





Figure 13: Documents



Figure 14: Documents



Figure 15: Documents



Figure 16: Additional tyres



Figure 17: Navigation



Figure 18: Misc.





Figure 19: Misc.

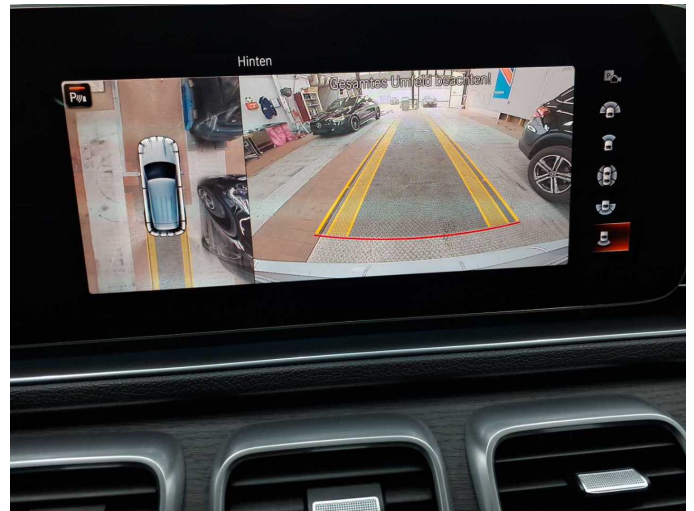


Figure 20: Misc.



Figure 21: Misc.



Figure 22: Misc.



Figure 23: Misc.



Figure 24: Misc.





Figure 25: Misc.



Figure 26: Misc.



Figure 27: Misc.



Figure 28: Misc.



Figure 29: Misc.

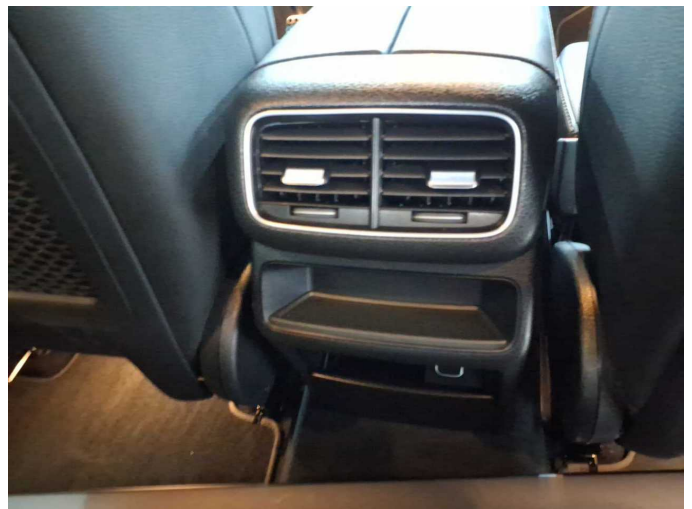


Figure 30: Misc.





**Figure 31:** Misc.



**Figure 32:** Misc.



**Figure 33:** Misc.



**Damage 1:** Bonnet: Bonnet - dent(s) - Smart repair



**Damage 1:** Bonnet: Bonnet - dent(s) - Smart repair



**Damage 2:** Side panel - rear right side: Wheel well extension - Stone chips - Smart repair

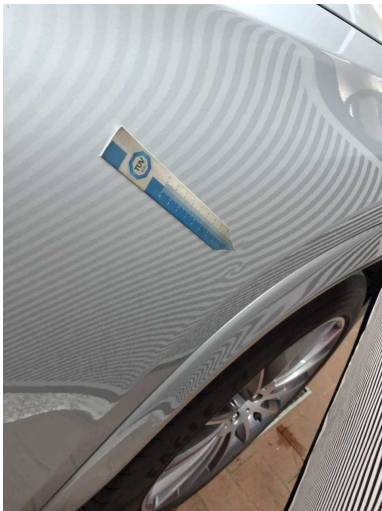




**Damage 2:** Side panel - rear right side: Wheel well extension - Stone chips - Smart repair



**Damage 3:** Mudguard - right side: Mudguard - right side - dent(s) - Smart repair



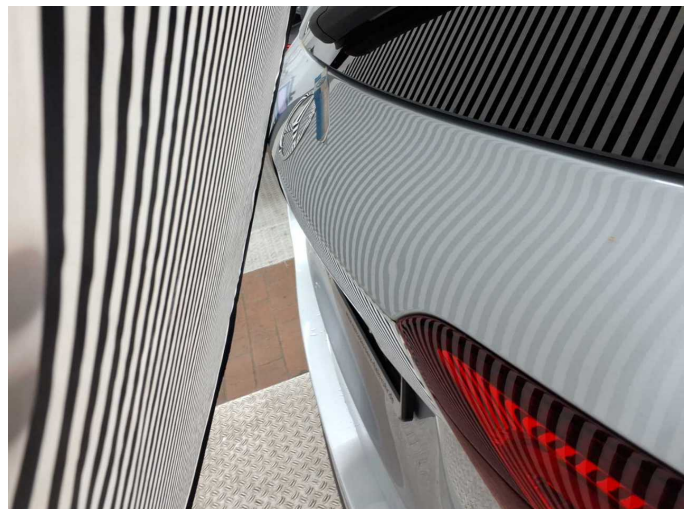
**Damage 3:** Mudguard - right side: Mudguard - right side - dent(s) - Smart repair



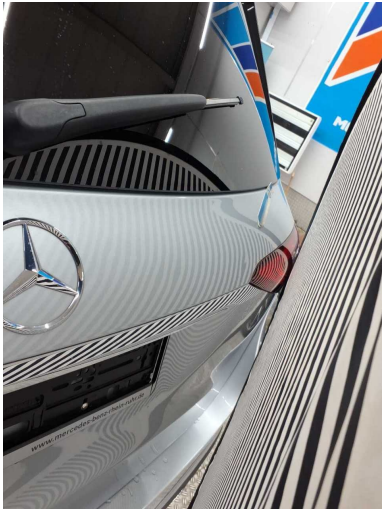
**Damage 4:** Boot lid / rear door: Boot lid - dent(s) - Smart repair



**Damage 4:** Boot lid / rear door: Boot lid - dent(s) - Smart repair



**Damage 4:** Boot lid / rear door: Boot lid - dent(s) - Smart repair



**Damage 4:** Boot lid / rear door: Boot lid - dent(s) - Smart repair



**Damage 5:** Side panel - rear right side: Side panel - Scratch(es) - Loss in value



**Damage 5:** Side panel - rear right side: Side panel - Scratch(es) - Loss in value



**Damage 6:** Wheel / tyres: Tyre - rear right side - Damaged - Replace



**Damage 6:** Wheel / tyres: Tyre - rear right side - Damaged - Replace



**Damage 6:** Wheel / tyres: Tyre - rear right side - Damaged - Replace





**Damage 7:** Rear bumper: Rear bumper - Scratched - Paint



**Damage 7:** Rear bumper: Rear bumper - Scratched - Paint



**Damage 7:** Rear bumper: Rear bumper - Scratched - Paint



**Damage 7:** Rear bumper: Rear bumper - Scratched - Paint



**Damage 7:** Rear bumper: Rear bumper - Scratched - Paint



**Damage 8:** Wheel / tyres: Alloy rim - front left side - Scratched - Loss in value





**Damage 8:** Wheel / tyres: Alloy rim - front left side - Scratched - Loss in value



**Damage 8:** Wheel / tyres: Alloy rim - front left side - Scratched - Loss in value



**Damage 8:** Wheel / tyres: Alloy rim - front left side - Scratched - Loss in value



**Damage 9:** Front bumper: Front bumper - Scratched - Paint



**Damage 9:** Front bumper: Front bumper - Scratched - Paint



**Damage 9:** Front bumper: Front bumper - Scratched - Paint



**Damage 9:** Front bumper: Front bumper - Scratched - Paint



**Damage 9:** Front bumper: Front bumper - Scratched - Paint



**Damage 9:** Front bumper: Front bumper - Scratched - Paint



**Damage 9:** Front bumper: Front bumper - Scratched - Paint



**Damage 10:** Door - front right side: Door (+ Kratzer) - Dent / paintcoat damage - Paint



**Damage 10:** Door - front right side: Door (+ Kratzer) - Dent / paintcoat damage - Paint





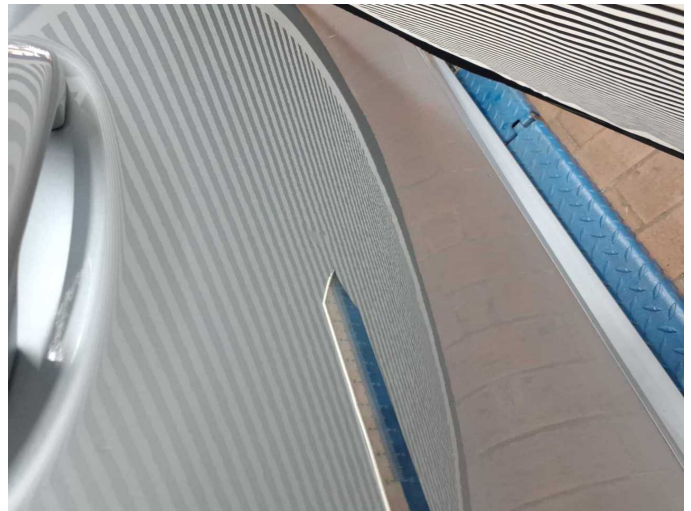
**Damage 10:** Door - front right side: Door (+ Kratzer) - Dent / paintcoat damage - Paint



**Damage 10:** Door - front right side: Door (+ Kratzer) - Dent / paintcoat damage - Paint



**Damage 10:** Door - front right side: Door (+ Kratzer) - Dent / paintcoat damage - Paint



**Damage 10:** Door - front right side: Door (+ Kratzer) - Dent / paintcoat damage - Paint

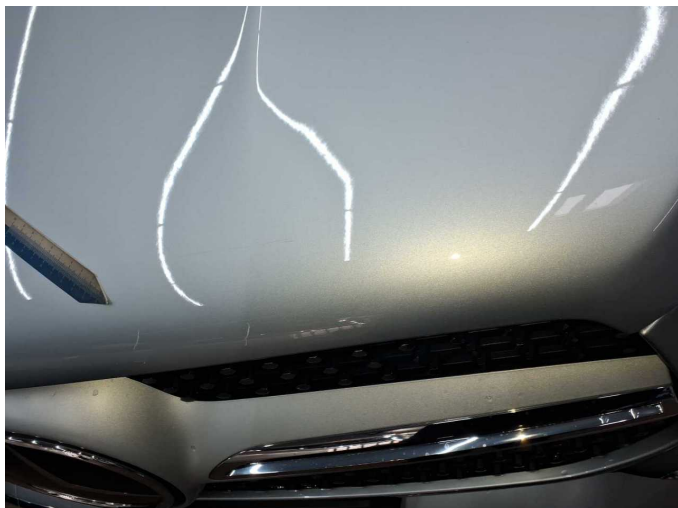


**Damage 11:** Bonnet: Bonnet - Scratch(es) - Paint



**Damage 11:** Bonnet: Bonnet - Scratch(es) - Paint





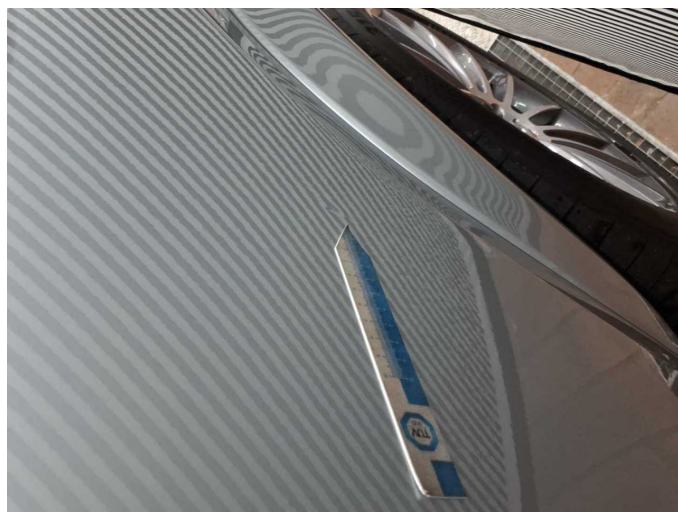
**Damage 11:** Bonnet: Bonnet - Scratch(es) - Paint



**Damage 11:** Bonnet: Bonnet - Scratch(es) - Paint



**Wear and tear 2:** Door - rear left side: Door - dent(s) - No deduction



**Wear and tear 2:** Door - rear left side: Door - dent(s) - No deduction



# Wartungshistorie

(gemäß Auftraggeber Informationen)

Fahrgestellnummer: W1N1671171A668254

Hersteller / Modell: MERCEDES-BENZ MB GLE 350 de 4Matic 9G-TRONIC AMG Line

Datum	KM-Stand	Beschreibung
05.05.2025	72.108	AU; Regelwartungsdienst
10.04.2024	43.829	Regelwartungsdienst
19.04.2023	17.915	Regelwartungsdienst