



Expertise

Protocol number: 41808343
Order number / reference: 25176254
Inspection date: 2 Oct 2025

Manufacturer: Mercedes-Benz

Model: GLE 350 de 4Matic 9G-TRONIC

VIN: W1N1671171A604032



Vehicle details	
Manufacturer / Type / Model / Equipment	
Mercedes-Benz GLE 350 de 4Matic 9G-TRONIC	
Vehicle Identification number	W1N1671171A604032
Mileage (Read)	92,206 km
First registration	10 Dec 2021
Number of holders	1
Next periodical technical inspection	12/2026
(Report on hand)	
Power / Engine displacement	143 kw / 1,950 ccm
Fuel type / Cylinder	Hybr.D/E ext. edition / 4
Gearbox / Number of gears	Automatic / 9
Type of drive	All-wheel drive
Type of vehicle	SUV
Colour / colour code	SCHWARZ
Doors / Seats	5 / 5
Upholstery type	Artificial leather
Colour of upholstery	Black
Vehicle with smoke odor	no



Vehicle details

Maintenance booklet / proof	digital proof / complete	Next maintenance in	32 Tag(e)
Last maintenance on / at	10/2024 at 69,493 km		
Key is / should be	2 / 2	FZG documents	ZB#2 (B) was available (copy), ZB#1 (S) was not available
		Letter No.	GF755234
Previous damage / Accident	None detectable	Repainting	None detectable
Inspection conditions	sufficient	Lifting equipment / pit	No
Test drive	Not performed	Engine function test	Performed
Manufacturer key number/ type code number	2222 / AFH 00077		
Emission standard	EURO6;WLTP;AP;PI/CI; M, N1 I	Fine dust sticker	
Permitted total weight	3,260 kg	Empty weight	

Tyres

Mounted tyres

#	Tyre size	Type of tyre	Manufacturer	Tread depth
1)	275/50 R20 113W	Summer tyres on Light alloy	Continental	6mm / 6mm
2)	275/50 R20 113W	Summer tyres on Light alloy	Continental	6mm / 6mm

Legend: Tread depth information for tires on the left is in the first place, for tires on the right is in the second place on the axle in the direction of travel

Equipment

Standard equipment

- 5-way headrests (adjustable in height and angle)
- Acoustic Surrounding Area Protection (To ensure that your vehicle does not pose a danger to pedestrians and cyclists, even when driving purely electrically and almost silently, the Acoustic Surrounding Area Protection generates a Mercedes-Benz-specific sound outside the vehicle up to a speed of 30 km/h.)
- Active Brake Assist
- Adaptive brake light (flashing)
- Adaptive High Beam Assistant
- Airbag: Kneebag for driver
- Airbag: Windowbags
- Anti-lock braking system
- ATTENTION ASSIST (can detect typical signs of fatigue through driver behavior and warn the driver of increasing fatigue or inattention)
- Charging cable for household socket, 5 m, smooth (This charging cable, also called a Mode 2 cable, allows you to charge your vehicle battery from a household socket with up to 2.3 kW (230 V, 1-phase, 10 A) and is compatible with type E/F CEE 7/7 sockets.)
- Charging system: AC on-board charger 7.4 kW (AC)
- Communication module (LTE) for using Mercedes me connect services (The communication module (LTE) offers you a clear advantage in terms of convenience and safety. It constantly connects the vehicle to the internet, allowing you to use helpful services such as Live Traffic Information from Mercedes me connect. Two mobile network antennas and an LTE-capable SIM card ensure a fast connection.)
- Cruise control with variable speed limiter
- diesel particulate filter
- EASY-Pack tailgate with electric operation for opening and closing
- ECO start-stop function
- Electric parking brake
- Electric windows, front and rear
- Electronic Stability Program (ESP)
- Electronic Traction System for All-Wheel Drive (4ETS)
- Foldable armrest for driver and passenger (with compartment)
- High-visibility vest for drivers
- Immobiliser
- KEYLESS-GO start function
- Mechanical child safety locks in the rear doors (and electric ones for the rear windows)
- Mercedes-Benz emergency call system
- 3-point seat belts (including mechanical belt height adjustment and belt force limiter for driver and front passenger as well as automatic belt height adjustment in the rear outside)
- 4MATIC permanent all-wheel drive
- Active Lane Keeping Assist
- ADAPTIVE BRAKE (with HOLD function - including hill start assist and dry braking in wet conditions)
- Airbag: driver and passenger side
- Airbag: Sidebag for driver and front passenger (combined thorax/pelvis bag)
- Ambient lighting (ambient lighting in 64 colors - all colors can be selected individually - brightness of the lighting zones can be selected from 0 to 100% frei - nine color schemes with different color combinations - Dynamic mode: atmospheric color change through slow, continuous transition between different colors - Climate effect: color feedback when the temperature setting is changed - Welcome effect: special lighting when entering the vehicle)
- Armrest in the rear (folding)
- Automatic passenger airbag deactivation
- Brake Assist BAS (with brake force support when emergency braking is detected)
- Central locking with interior switch (including automatic locking (can be switched off) and crash sensor with emergency opening)
- Charging cable for wallboxes and public charging stations, 5 m, smooth (This charging cable, also called a Mode 3 cable, allows you to charge your vehicle battery at a wallbox or public charging stations with up to 11 kW (Type 2, 3-phase, 20 A).)
- Chassis with steel suspension and lowering (steel suspension with passive damping system)
- Climate: THERMATIC automatic climate control (2-zone automatic climate control: allows individually adjustable temperatures for the driver and passenger sides - Control of climate settings via the instrument panel controls or the touch display - Sensor system for recording, for example, interior/outside temperature, sunlight, humidity, and dew point - Combined activated carbon filter for filtering dust, soot, and pollen - Window demisting sensor - Air recirculation by pressing the button for 2 seconds (with sunroof closing))
- Downhill Speed Regulation (DSR) (speed adjustment between 2 and 18 km/h via cruise control - switch for switching on and off in the center console - display on the multimedia screen)
- EASY-Pack load compartment cover (removable)
- Exhaust system with 2 chrome-plated tailpipe trims
- Exterior mirrors electrically adjustable and heated
- Front door sills with "Mercedes-Benz" lettering illuminated in white
- Heated rear window (with timer control)



- Navigation accessories: Pre-installation for navigation services (Wherever you go, you'll always be well informed. Your vehicle will answer questions about your trip and provide you with information about current gas station prices at your destination, the number of available parking spaces, and the current weather. This makes planning your trip even easier.)
- Package: Chrome (window line trim strip and underbody protection front and rear, chrome-plated beltline trim strip)
- Package: Mirror package (both exterior mirrors electrically foldable (button in the driver's door control panel) - automatic lowering of the passenger mirror glass to the parking position when reverse gear is engaged - interior mirror and exterior mirror on the driver's side automatically dimmable - ambient lighting in both exterior mirrors: with projection of the brand logo to illuminate the entry area)
- Package: Parking package with rear view camera (Active Parking Assist with PARKTRONIC)
- Package: Public Charging (Includes charging cable for wallbox and public charging stations, 5m, smooth, and Remote and Charging Services Plus)
- Radiator cover with 2 chrome-plated slats in SUV design
- Remote Services Plus (The Remote Services Plus package transforms mobility into a new experience, offering greater comfort and safety. Status queries provide information about the range. You can remotely control certain functions and locate your vehicle. Services such as Maintenance Management coordinate service appointments, saving you valuable time.)
- Roof rails in aluminum look
- Seats: 4-way lumbar support for driver and front passenger
- Seats: Comfort seats
- Seats: Folding rear seat backrests (40/20/40 split)
- Seats: Front seats electrically adjustable
- Speed Limit Assistant (camera behind the windshield - uses image recognition to determine the maximum speed limit for the current route based on the relevant signage - if there are no signs, additional information such as lane width can be used to determine the maximum speed limit - display of speed limits including additional restrictive signs in the instrument cluster and in the optionally available)
- Steering column mechanically adjustable for length and height
- Steering wheel: Multifunction sports steering wheel in nappa leather (The multifunction sports steering wheel in nappa leather with black control panels will delight you with every glance and every touch. The soft nappa leather is of exquisite quality. Thus, the steering wheel always conveys a passion for high-quality automotive details.)
- tachometer
- Third brake light
- Traction control (ASR)
- LED High Performance headlights (signal light with trifunctional flare for daytime running light, position light and direction indicator in LED light guide technology with thick-walled optics, high beam in LED reflection technology, dipped beam in LED projection technology, the rear light elements in LED technology: all lighting functions in full LED technology, tail light, brake light and parking light, rear fog light (left-side only), direction indicator in the white light band, reversing light in the white light band)
- Lockable, air-conditioned and illuminated glove compartment
- Navigation accessories: Advanced MBUX functions (personalization (profiles) and prediction functions - LINGUATRONIC with natural language understanding - activation via "Hey Mercedes" - Wi-Fi hotspot - Internet radio)
- Navigation: Hard drive navigation (Mercedes-Benz look and feel of the navigation system, all map data stored on the hard drive - fast hard drive navigation - destination input via touch function or voice control - route calculation including intermediate destinations - numerous route options and avoidance options - 3D image of the upcoming maneuver and lane recommendation - easy switching of views from 2D to 3D and vice versa - compass - route recording function (requires a USB device to be connected to the multimedia system))
- Paint finish: Uni
- Phone accessories: Smartphone integration (Android Auto and Apple CarPlay). Smartphone integration connects the mobile phone to the media system via Apple CarPlay and Android Auto.
- Power steering
- PRE-SAFE system (with reversible belt tensioners for driver and front passenger seats and closing function for side windows)
- Radio accessories: Additional USB interfaces
- Radio accessories: Digital radio (DAB)
- Rear view camera
- Rear window wiper with interval control (and automatic activation when reversing)
- Tire pressure monitoring (TPMS)
- Transmission: 9G-TRONIC (9-speed torque converter transmission - DIRECT SELECT selector lever - DIRECT SELECT steering wheel shift paddles - DYNAMIC Select)
- Upholstery: ARTICO black man-made leather
- Velour floor mats (in interior color)
- Wheels: 48.3 cm (19") light alloy wheels, 4-spoke design (vanadium silver painted with VA 275/55 R 19 on 8.5 J x 19 ET 55, HA 275/55 R 19 on 8.5 J x 19 ET 42)
- Windscreen wipers with rain sensor



- Widescreen Cockpit (instrument display and media display as a visual unit under a continuous cover glass - display cluster consisting of two fully digital color displays in flatscreen design, each with a screen diagonal of 12.3 inches and a resolution of 1920 x 720 pixels - touchscreen version for the media display - display styles: "Classic," "Sport," "Progressive," and "Subtle")

Extra equipment

- Trailer hitch with ESP trailer stabilization
- Package: AIR-BALANCE (fragrance generator with filled fragrance bottle and function button in the glove compartment - ionizer in the side vent channel - improved filter system between the intake area and the air distribution system of the air conditioning unit)
- Package: KEYLESS-GO Convenience Package (vehicle key with KEYLESS-GO functionality - KEYLESS-GO access and drive authorization system - start/stop button - convenient opening and closing - door handles with chrome inserts - HANDS-FREE ACCESS - handle recess lighting - remote trunk lid closing - EASY-PACK luggage compartment lid)
- Upholstery: ARTICO man-made leather
- Wheels: 50.8 cm (20") AMG light-alloy wheels in 5-twin-spoke design (painted tremolite grey with a high-sheen finish, front axle 275/50 R 20 on 9.0 J x 20 ET 57, rear axle 275/50 R 20 on 9.0 J x 20 ET 44)
- Heated windscreen washer system (including washer fluid reservoir, windscreen washer nozzles and washer fluid hoses)
- Heat-insulating dark tinted glass
- Interior headliner fabric black
- Package: AMG Line Exterior (diamond grille with chrome pins, integrated Mercedes star and 1 slat painted in matt iridium silver with chrome inserts - AMG Styling: AMG front apron with chrome trim, sporty, distinctive air intakes in the wheel arch trim, front and rear fender flares in body color, AMG side skirts, AMG rear apron with diffuser insert in black look and chrome trim - AMG LMR in 5-twin-spoke design, tremolite gray painted and high-gloss with front 275/50 R 20 on 9 J x 20 ET 57, rear 275/50 R 20 on 9 J x 20 ET 44)
- Package: Memory Package (driver and front passenger seats, steering column, and exterior mirrors electrically adjustable and memorizable - seat fore/aft position and headrest height also electrically adjustable - 4-way lumbar support for driver and front passenger - seat cushion depth adjustment with gap-free cushion - PRE-SAFE positioning function for the front passenger seat - front passenger seat operation for driver)
- Seats: Heated rear seats
- Blind Spot Assist
- Decorative elements: anthracite open-pore oak wood

Brief expert findings

Documents submitted	At the time of the inspection, the registration certificate Part 2 (letter) was available, but the registration certificate Part 1 (certificate) was not. (Copy)
VIN comparison	The vehicle identification number (VIN) was read from the vehicle and its conformity with the submitted documents was verified during the inspection by the undersigned.
Inspection	The inspection conditions were sufficient for the assessment of the vehicle. No lifting equipment or pit was available for examining the vehicle. Therefore, inspection of the vehicle's underside was only possible to a limited extent.
Test drive	No test drive/maneuvering was carried out during the inspection of the vehicle.
Engine function test	An engine test run was performed.

Value reducing factors

No.	Component group	Description
1	Door - rear left side	Door - Scratch(es) - Smart repair
2	Side panel - rear right side	Sill - Scratch(es) - Smart repair
3	Front bumper	Front bumper - Scratched - Repair and paint



Wear and tear

No.	Component group	Description
1	Vehicle glazing	Windscreen - Stone chips - No deduction
2	Rear bumper	Rear bumper (Verladekante) - Scratch(es) - No deduction

The vehicle shows signs of wear commensurate with its age and use.

Order/Scope of order

The order was placed to prepare a sales report for the vehicle described. This includes the following:

- Description of core relevant information about the vehicle
- Documentation of equipment features
(*Delivery by third-party service providers*)
- Documentation of damage, defects, missing parts
- Documentation of previous damage, unrepaired previous damage, repainting
- a brief visual or functional inspection of the equipment details if possible.
(*Functional tests of driver assistance systems are not included in the scope of services!*)
- a photo documentation of the vehicle

Basis for the order

This product is based on the Alphabet Fuhrpark GmbH guidelines for vehicle returns and valuations. The expert makes the explicit findings in each individual case objectively within the framework of the specified standards based on his or her own expertise.

The vehicle inspection takes place in a disassembled state.

Damage or defects that can only be detected during disassembly/diagnosis work or through advanced knowledge remain within the scope of the prognosis risk. An extended risk exists for concealed defects caused by fraudulent deception and not identifiable by the expert.

Damage or defects resulting from normal use or wear and tear of the vehicle will be accepted according to the applicable standard.

There was no explicit identification or monetary consideration of the expected features within the product.

Features which in their nature and severity slightly exceed normal use but do not constitute unacceptable damage will be documented and identified under signs of use if necessary.

Damage or defects that can no longer be attributed to normal use or wear and tear according to the underlying standard are listed in the product under value-reducing factors.

Depending on the product specification, a monetary ID can be provided. If this takes place, the costs can be 100% d or pro rata depending on the vehicle's age and mileage.

Previous damages

Apparently, no repaired previous damage could be found on the vehicle.



Figure 1: Diagonal front (left)



Figure 2: Diagonal front (right)



Figure 3: Diagonal rear (left)



Figure 4: Diagonal rear (right)



Figure 5: Interior - front



Figure 6: Interior - rear



Figure 7: Instrument cluster



Figure 8: Instrument panel



Figure 9: Interior 360° view



Figure 10: Cargo area



Figure 11: VIN



Figure 12: Mounted tyres



Figure 13: Documents



Figure 14: Documents

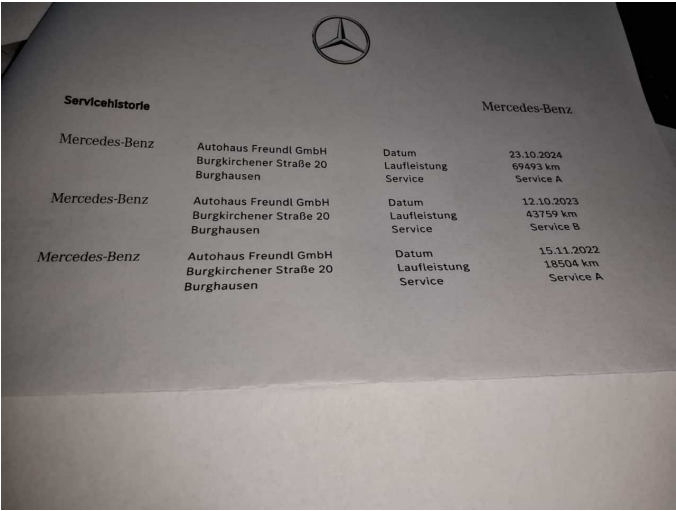


Figure 15: Documents



Figure 16: Documents



Figure 17: Navigation



Figure 18: Misc.



Figure 19: Misc.

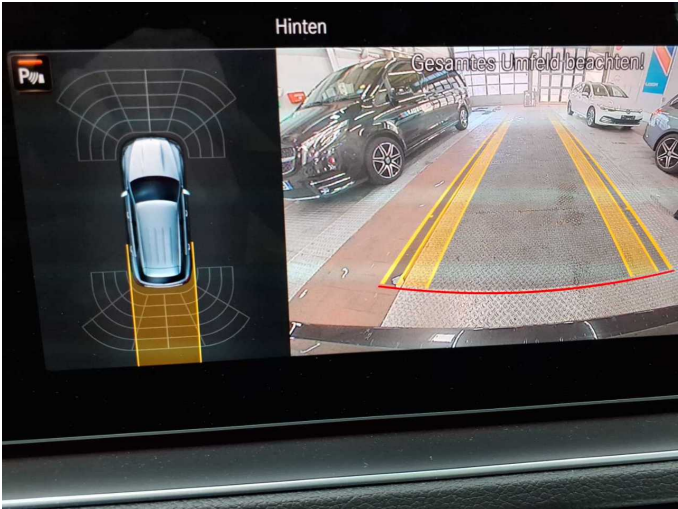


Figure 20: Misc.



Figure 21: Misc.



Figure 22: Misc.



Figure 23: Misc.



Figure 24: Misc.



Figure 25: Misc.



Figure 26: Misc.

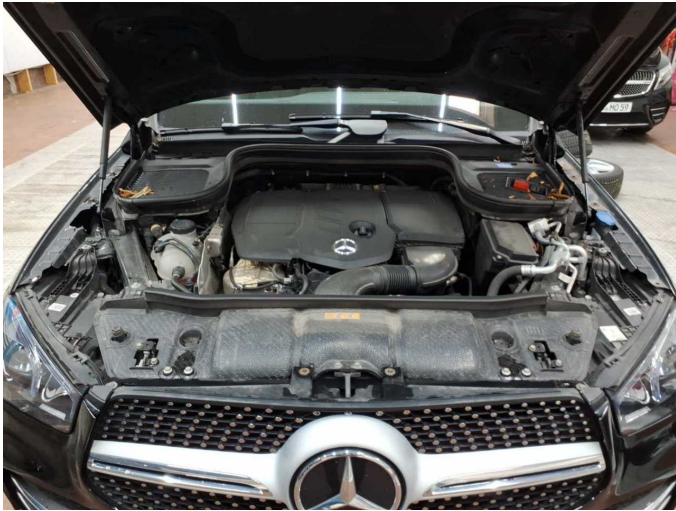


Figure 27: Misc.



Figure 28: Misc.



Figure 29: Misc.



Figure 30: Misc.



Figure 31: Misc.



Figure 32: Misc.



Figure 33: Misc.



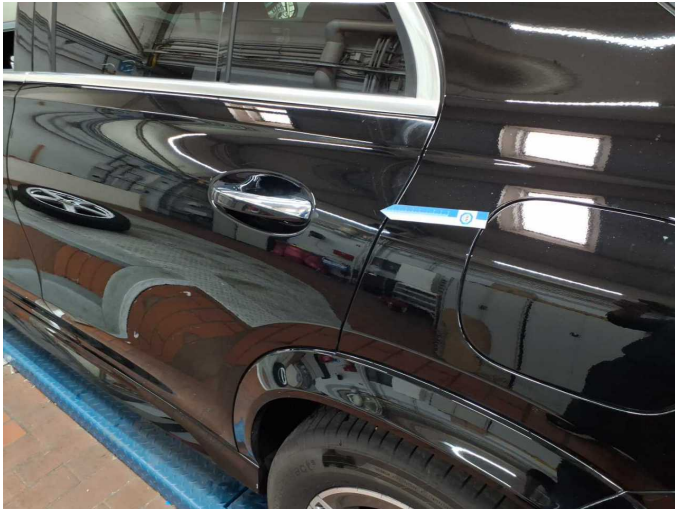
Figure 34: Misc.



Figure 35: Misc.



Figure 36: Misc.



Damage 1: Door - rear left side: Door - Scratch(es) - Smart repair



Damage 1: Door - rear left side: Door - Scratch(es) - Smart repair



Damage 2: Side panel - rear right side: Sill - Scratch(es) - Smart repair



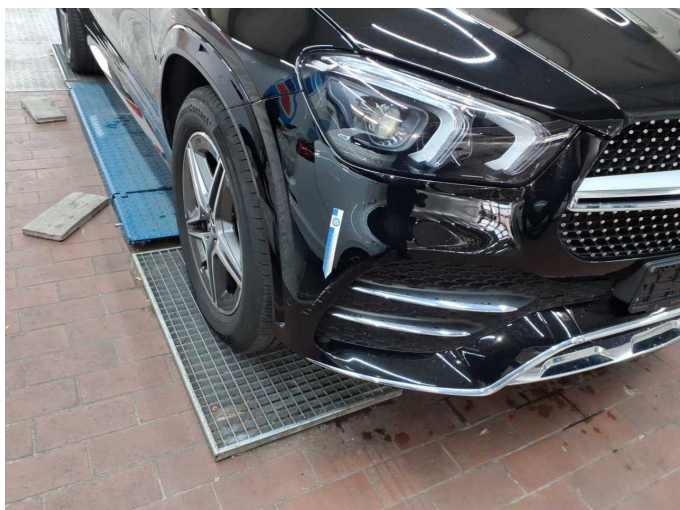
Damage 2: Side panel - rear right side: Sill - Scratch(es) - Smart repair



Damage 3: Front bumper: Front bumper - Scratched - Repair and paint



Damage 3: Front bumper: Front bumper - Scratched - Repair and paint



Damage 3: Front bumper: Front bumper - Scratched - Repair and paint



Damage 3: Front bumper: Front bumper - Scratched - Repair and paint



Wear and tear 2: Rear bumper: Rear bumper (Verladekante) - Scratch(es) - No deduction



Wear and tear 2: Rear bumper: Rear bumper (Verladekante) - Scratch(es) - No deduction