



Expertise

Protocol number: 41388219
Order No. / Reference: 25046983
Inspection date: 3 Sept 2025

Manufacturer: Mercedes-Benz
VIN: W1N1671171A494835

Model: GLE 350 de 4Matic 9G-TRONIC AMG Line



Vehicle details	
Manufacturer / Type / Model / Equipment	
Mercedes-Benz GLE 350 de 4Matic 9G-TRONIC AMG Line	
Vehicle Identification number	W1N1671171A494835
Mileage (Read)	143,792 km
First registration	20 Jul 2021
Number of holders	1
Power / Engine displacement	143 kw / 1,950 ccm
Fuel type / Cylinder	Hybr.D/E ext. edition / 4
Gearbox / Number of gears	Automatic / 9
Type of drive	All-wheel drive
Type of vehicle	SUV
Colour / colour code	Selenitgrau metallic
Doors / Seats	5 / 5
Upholstery type	Leather
Colour of upholstery	Black
Vehicle with smoke odor	no



Vehicle details

Maintenance booklet / proof	digital proof / complete	Next maintenance in	107 Tag(e)
Last maintenance on / at	11/2024 at 124,915 km		
Key is / should be	2 / 2	FZG documents	ZB#2 (B) was available (copy), ZB#1 (S) was not available
		Letter No.	GC625298
Previous damage / Accident	Detectable	Repainting	Detectable
Inspection conditions	sufficient	Lifting equipment / pit	yes
Test drive	Not performed	Engine function test	Performed
Manufacturer key number/ type code number	2222 / AFH 00067		
Emission standard	EURO6;WLTP;AP;PI/CI; M, N1 I	Fine dust sticker	
Permitted total weight	3,260 kg	Empty weight	

Tyres

Mounted tyres

#	Tyre size	Type of tyre	Manufacturer	Tread depth
1)	275/50 R20 113W	Summer tyres on Light alloy	Pirelli	7mm / 7mm
2)	275/50 R20 113W	Summer tyres on Light alloy	Pirelli	7mm / 7mm

Additional tyres

#	Tyre size	Type of tyre	Manufacturer	Tread depth
1)	275/50 R20 113V	Winter tyres on Light alloy	Pirelli	6mm / 6mm
2)	275/50 R20 113V	Winter tyres on Light alloy	Pirelli	6mm / 6mm

Replacement

Typ	Tyre size	Type of tyre	Manufacturer	Tread depth
	Tirefit	Expiration date 03/2026		

Legend: Tread depth information for tires on the left is in the first place, for tires on the right is in the second place on the axle in the direction of travel

Equipment

Standard equipment

- Exhaust system with 2 chrome-plated tailpipe trims
- Adaptive High Beam Assistant
- Adaptive brake light (flashing)
- Airbag: Kneebag for driver
- Airbag: Windowbags
- Active Brake Assist
- Acoustic Surrounding Area Protection (To ensure that your vehicle does not pose a danger to pedestrians and cyclists, even when driving purely electrically and almost silently, the Acoustic Surrounding Area Protection generates a Mercedes-Benz-specific sound outside the vehicle up to a speed of 30 km/h.)
- AMG floor mats in black velour with "AMG" lettering
- AMG sports pedal system made of brushed stainless steel with black rubber studs
- Anti-lock braking system
- Foldable armrest for driver and passenger (with compartment)
- Automatic passenger airbag deactivation
- Exterior mirrors electrically adjustable and heated
- Brake Assist BAS (with brake force support when emergency braking is detected)
- Downhill Speed Regulation (DSR) (speed adjustment between 2 and 18 km/h via cruise control - switch for switching on and off in the center console - display on the multimedia screen)
- ECO start-stop function
- Electronic Stability Program (ESP)
- Electronic Traction System for All-Wheel Drive (4ETS)
- Electric windows, front and rear
- Electric parking brake
- Transmission: 9G-TRONIC (9-speed torque converter transmission - DIRECT SELECT selector lever - DIRECT SELECT steering wheel shift paddles - DYNAMIC Select)
- Lockable, air-conditioned and illuminated glove compartment
- Heated rear window (with timer control)
- Rear window wiper with interval control (and automatic activation when reversing)
- Mechanical child safety locks in the rear doors (and electric ones for the rear windows)
- Communication module (LTE) for using Mercedes me connect services (The communication module (LTE) offers you a clear advantage in terms of convenience and safety. It constantly connects the vehicle to the internet, allowing you to use helpful services such as Live Traffic Information from Mercedes me connect. Two mobile network antennas and an LTE-capable SIM card ensure a fast connection.)
- 5-way headrests (adjustable in height and angle)
- Radiator cover with 2 chrome-plated slats in SUV design
- Charging system: AC on-board charger 7.4 kW (AC)
- ADAPTIVE BRAKE (with HOLD function - including hill start assist and dry braking in wet conditions)
- Airbag: driver and passenger side
- Airbag: Sidebag for driver and front passenger (combined thorax/pelvis bag)
- Active Lane Keeping Assist
- 4MATIC permanent all-wheel drive
- Ambient lighting (ambient lighting in 64 colors - all colors can be selected individually - brightness of the lighting zones can be selected from 0 to 100% frei - nine color schemes with different color combinations - Dynamic mode: atmospheric color change through slow, continuous transition between different colors - Climate effect: color feedback when the temperature setting is changed - Welcome effect: special lighting when entering the vehicle)
- Traction control (ASR)
- Armrest in the rear (folding)
- ATTENTION ASSIST (can detect typical signs of fatigue through driver behavior and warn the driver of increasing fatigue or inattention)
- Roof rails in aluminum look
- diesel particulate filter
- tachometer
- Third brake light
- EASY-Pack tailgate with electric operation for opening and closing
- Front door sills with "Mercedes-Benz" lettering illuminated in white
- Chassis with steel suspension and lowering (steel suspension with passive damping system)
- Speed Limit Assistant (camera behind the windshield - uses image recognition to determine the maximum speed limit for the current route based on the relevant signage - if there are no signs, additional information such as lane width can be used to determine the maximum speed limit - display of speed limits including additional restrictive signs in the instrument cluster and in the optionally available)
- Interior headliner fabric crystal grey
- KEYLESS-GO start function
- Climate: THERMATIC automatic climate control (2-zone automatic climate control: allows individually adjustable temperatures for the driver and passenger sides - Control of climate settings via the instrument panel controls or the touch display - Sensor system for recording, for example, interior/outside temperature, sunlight, humidity, and dew point - Combined activated carbon filter for filtering dust, soot, and pollen - Window demisting sensor - Air recirculation by pressing the button for 2 seconds (with sunroof closing))



- LED High Performance headlights (signal light with trifunctional flare for daytime running light, position light and direction indicator in LED light guide technology with thick-walled optics, high beam in LED reflection technology, dipped beam in LED projection technology, the rear light elements in LED technology: all lighting functions in full LED technology, tail light, brake light and parking light, rear fog light (left-side only), direction indicator in the white light band, reversing light in the white light band)
- Steering column mechanically adjustable for length and height
- Navigation accessories: Pre-installation for navigation services (Wherever you go, you'll always be well informed. Your vehicle will answer questions about your trip and provide you with information about current gas station prices at your destination, the number of available parking spaces, and the current weather. This makes planning your trip even easier.)
- Package: Chrome (window line trim strip and underbody protection front and rear, chrome-plated beltline trim strip)
- Package: Interior Chrome Package (controls and trim strips in the interior door area in silver chrome - controls to the left of the steering wheel in silver chrome - touchpad, hand warmer, control switches and cup holders in the center console in silver chrome - climate control strip in silver chrome)
- PRE-SAFE system (with reversible belt tensioners for driver and front passenger seats and closing function for side windows)
- Radio accessories: Digital radio (DAB)
- Radio accessories: Additional USB interfaces
- Remote Services Plus (The Remote Services Plus package transforms mobility into a new experience, offering greater comfort and safety. Status queries provide information about the range. You can remotely control certain functions and locate your vehicle. Services such as Maintenance Management coordinate service appointments, saving you valuable time.)
- Seats: Heated seats for driver and passenger seats
- Seats: Sports seats for driver and front passenger with specific seat graphics (fully electric seat adjustment)
- Cruise control with variable speed limiter
- High-visibility vest for drivers
- Immobiliser
- Heat-insulating glass, all around
- Central locking with interior switch (including automatic locking (can be switched off) and crash sensor with emergency opening)
- Charging cable for household sockets, 5 m, smooth (This charging cable, also called a Mode 2 cable, allows you to charge your vehicle battery from a household socket with up to 2.3 kW (230 V, 1-phase, 10 A) and is compatible with type E/F CEE 7/7 sockets.)
- Steering wheel: Multifunction sports steering wheel in nappa leather (The multifunction sports steering wheel in nappa leather with chrome control panels has a flattened bottom and perforated grip area—an excellent qualification for sporty driving. You'll not only see this, but immediately feel it when you touch the steering wheel. The high-quality, soft nappa leather is a quality experience in itself.)
- Mercedes-Benz emergency call system
- Navigation: Hard drive navigation (Mercedes-Benz look and feel of the navigation system, all map data stored on the hard drive - fast hard drive navigation - destination input via touch function or voice control - route calculation including intermediate destinations - numerous route options and avoidance options - 3D image of the upcoming maneuver and lane recommendation - easy switching of views from 2D to 3D and vice versa - compass - route recording function (requires a USB device to be connected to the multimedia system))
- Package: Parking package with rear view camera (Active Parking Assist with PARKTRONIC)
- Package: Mirror package (both exterior mirrors electrically foldable (button in the driver's door control panel) - automatic lowering of the passenger mirror glass to the parking position when reverse gear is engaged - interior mirror and exterior mirror on the driver's side automatically dimmable - ambient lighting in both exterior mirrors: with projection of the brand logo to illuminate the entry area)
- Tire pressure monitoring (TPMS)
- Rear view camera
- Windscreen wipers with rain sensor
- Power steering
- 3-point seat belts (including mechanical belt height adjustment and belt force limiter for driver and front passenger as well as automatic belt height adjustment in the rear outside)
- Seats: Folding rear seat backrests (40/20/40 split)
- Phone accessories: Smartphone integration (Android Auto and Apple CarPlay). Smartphone integration connects the mobile phone to the media system via Apple CarPlay and Android Auto.
- Widescreen Cockpit (instrument display and media display as a visual unit under a continuous cover glass - display cluster consisting of two fully digital color displays in flatscreen design, each with a screen diagonal of 12.3 inches and a resolution of 1920 x 720 pixels - touchscreen version for the media display - display styles: "Classic," "Sport," "Progressive," and "Subtle")

Extra equipment

- AMG Line Interior
- Brake system with larger brake discs on the front axle
- Trailer hitch with ESP trailer stabilization



- Head-up display (lens and mirror system projects a virtual image into the driver's field of vision – full-color display that is easy to read even on sunny days and at night – depending on the equipment, displays, for example, navigation instructions, speed, speed limits, or cruise control or Active Distance Assist DISTRONIC settings)
- Instrument panel and door edges in ARTICO man-made leather (Instrument panel in ARTICO man-made leather - Door edges in ARTICO man-made leather)
- Loading sill protection in chrome look
- Load compartment cover (with additional partition net.)
- MULTIBEAM LED (84 individually controllable high-performance LEDs per headlight - low beam and high beam with LED projection technology - Adaptive High Beam Assist Plus - ULTRA RANGE high beam with 650 m range (maximum legally permitted beam range) - cornering light or cornering light with roundabout and intersection function - active cornering light - extended fog light, city light, country road light, motorway light and bad weather light - off-road light - adaptive full-LED rear lights)
- Package: Driving Assistance Package (Active Distance Assist DISTRONIC - Active Steering Assist - Active Brake Assist - Evasive Steering Assist - Active Lane Keeping Assist - Active Blind Spot Assist - PRE-SAFE PLUS)
- Upholstery: Nappa leather (for AMG Line interior) (including 4-way lumbar support for driver and seat cushion depth and front headrests electrically adjustable)
- Wheels: 50.8 cm (20") light alloy wheels in 5-twin-spoke design (painted Himalayan grey with a high-sheen finish with 275/50 R 20 front wheels on 8.5 J x 20 ET 55, 275/50 R 20 rear wheels on 8.5 J x 20 ET 42)
- Protection and care (The reversible mat helps in two ways: With its fine velour side, it effectively protects the cargo area from dirt, and with its rubberized side, it prevents cargo from slipping. The foldable zigzag loading sill protector with Velcro fastening can prevent clothing from getting dirty or the paintwork from being scratched during loading and unloading.)
- Temperature-controlled cup holders for driver and front passenger (Cool or warm drinks always within easy reach – the driver and front passenger enjoy this convenience with the temperature-controlled cup holders. Bottles, cans, and cups up to 0.5 l are securely held in the center console. The temperature is maintained between 8° and 55° C, depending on your preference.)
- Paint finish: metallic
- Charging cable for wallboxes and public charging stations, 5 m, smooth (This charging cable, also called a Mode 3 cable, allows you to charge your vehicle battery at a wallbox or public charging stations with up to 11 kW (Type 2, 3-phase, 20 A).)
- Navigation Accessory: MBUX Augmented Reality for Navigation (To help you navigate complex traffic situations, MBUX Augmented Reality for Navigation connects the virtual world with the real world. The technology overlays graphic navigation and traffic information onto live images. You'll reach your destination quickly, safely, and stress-free.)
- Package: Acoustic Comfort Package (laminated safety glass with infrared-reflecting film for the windscreen - laminated safety glass with infrared-absorbing film for the side windows - additional soundproofing measures)
- Package: Public Charging (Includes charging cable for wallbox and public charging stations, 5m, smooth and Remote and Charging Services Plus)
- Radio accessories: Burmester surround sound system (with 13 speakers and 590 watts of system power. Experience enhanced performance and exclusivity with the legendary Burmester sound. The high-performance speakers produce first-class surround sound. You can optimize this specifically for the front and rear seats, intensifying the listening experience. A quality that's also visible thanks to the high-quality Burmester logo.)
- TIREFIT with tire inflation compressor
- Partition net for luggage compartment separation and occupant protection
- Decorative elements: anthracite open-pore oak wood

Brief expert findings

Documents submitted	At the time of the inspection, the registration certificate Part 2 (letter) was available, but the registration certificate Part 1 (certificate) was not. (Copy)
VIN comparison	The vehicle identification number (VIN) was read from the vehicle and its conformity with the submitted documents was verified during the inspection by the undersigned.
Inspection	The inspection conditions were sufficient for the assessment of the vehicle. Lifting equipment and a pit were available for examining the vehicle.
Test drive	No test drive/maneuvering was carried out during the inspection of the vehicle.
Engine function test	An engine test run was performed.

Value reducing factors

No.	Component group	Description
1	Side panel - rear right side	Wheel arch - Scratched - Smart repair



No.	Component group	Description
2	Boot lid / rear door	Boot lid (Zierleiste, Klebefestigung lose) - Unprofessionally repaired - Replace

Wear and tear

No.	Component group	Description
1	Body	Body - Stone chips - No deduction
2	Body	Body - Scratch(es) - No deduction
3	Vehicle glazing	Windscreen - Stone chips - No deduction

The vehicle shows signs of wear commensurate with its age and use.

Previous damages

No.	Previous damage	Extent of damage (Net)
1	Side - left, Provided by user / customer, from 4 Mar 2025	2.662,33 €
2	Rear, Side right, Provided by user / customer, from 4 Mar 2025	3.145,95 €

Repainting

No.	Repainting
1	Boot lid / rear door, Side panel - rear left side, Side panel - rear right side, Door - rear left side, Door - rear right side, Door - front left side, Door - front right side

Paint coat thickness measurement

Boot lid / rear door	194 µm	Side panel - rear left side	185 µm
Side panel - rear right side	184 µm	Door - rear left side	201 µm
Door - rear right side	205 µm	Door - front left side	193 µm
Door - front right side	187 µm		

Order/Scope of order

The order was placed to prepare a sales report for the vehicle described. This includes the following:

- Description of core relevant information about the vehicle
- Documentation of equipment features
(Delivery by third-party service providers)
- Documentation of damage, defects, missing parts
- Documentation of previous damage, unrepaired previous damage, repainting
- a brief visual or functional inspection of the equipment details if possible.
(Functional tests of driver assistance systems are not included in the scope of services!)
- a photo documentation of the vehicle



Basis for the order

This product is based on the Alphabet Fuhrpark GmbH guidelines for vehicle returns and valuations. The expert makes the explicit findings in each individual case objectively within the framework of the specified standards based on his or her own expertise.

The vehicle inspection takes place in a disassembled state.

Damage or defects that can only be detected during disassembly/diagnosis work or through advanced knowledge remain within the scope of the prognosis risk. An extended risk exists for concealed defects caused by fraudulent deception and not identifiable by the expert.

Damage or defects resulting from normal use or wear and tear of the vehicle will be accepted according to the applicable standard.

There was no explicit identification or monetary consideration of the expected features within the product.

Features which in their nature and severity slightly exceed normal use but do not constitute unacceptable damage will be documented and identified under signs of use if necessary.

Damage or defects which, according to the underlying standard, can no longer be attributed to normal use or wear and tear are listed in the product under "Depreciating Factors".

Depending on the product specification, a monetary ID can be provided. If this takes place, the costs can be 100% d or pro rata depending on the vehicle's age and mileage.

Previous damages

According to available information previous damages were repaired at the vehicle. Traces of repairs, which allow conclusions about the area of repair, were not recognizable during the inspection.

Comments

- Der angegebene Winterradsatz ist kein Bestandteil der Fahrzeugausstattung.



Figure 1: Diagonal front (left)



Figure 2: Diagonal front (right)



Figure 3: Diagonal rear (left)



Figure 4: Diagonal rear (right)



Figure 5: Interior - front



Figure 6: Interior - rear



Figure 7: Instrument cluster



Figure 8: Instrument panel



Figure 9: interior 360° view



Figure 10: Cargo area



Figure 11: VIN



Figure 12: Mounted tyres

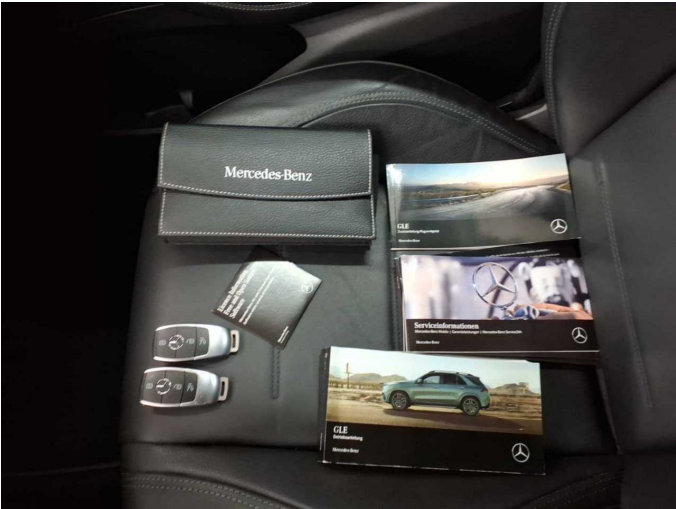


Figure 13: Documents



Figure 14: Documents



Figure 15: Additional tyres



Figure 16: Additional tyres



Figure 17: Navigation



Figure 18: Misc.



Figure 19: Misc.



Figure 20: Misc.



Figure 21: Misc.



Figure 22: Misc.



Figure 23: Misc.



Figure 24: Misc.



Figure 25: Misc.



Figure 26: Misc.



Figure 27: Misc.



Figure 28: Misc.



Figure 29: Misc.



Figure 30: Misc.



Figure 31: Misc.



Figure 32: Misc.

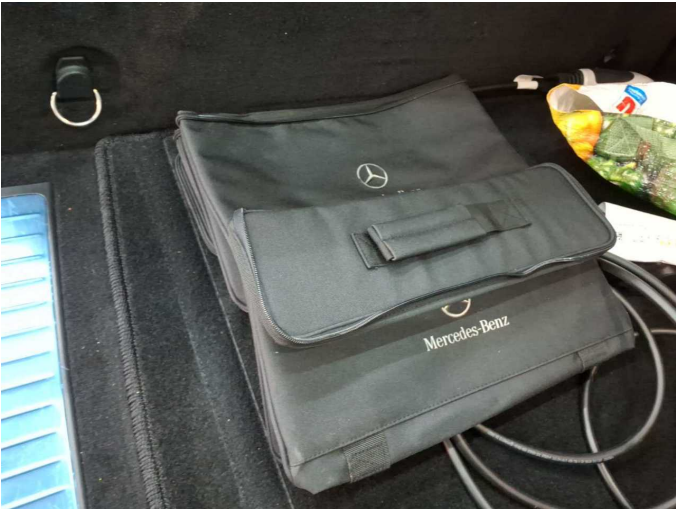


Figure 33: Misc.



Figure 34: Misc.



Figure 35: Misc.



Figure 36: Misc.

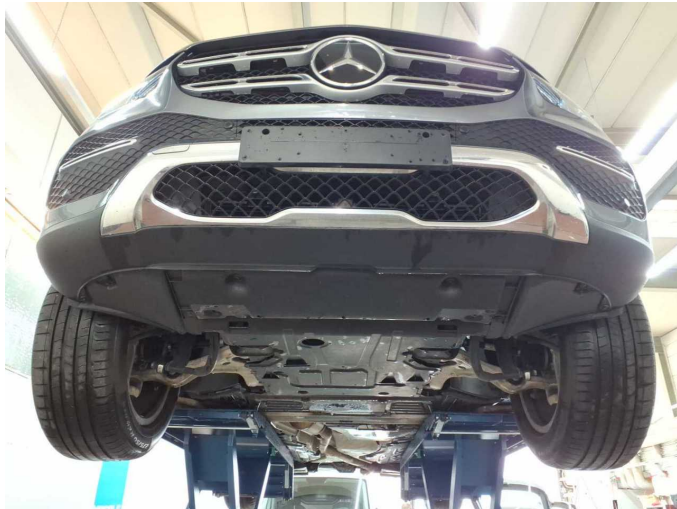
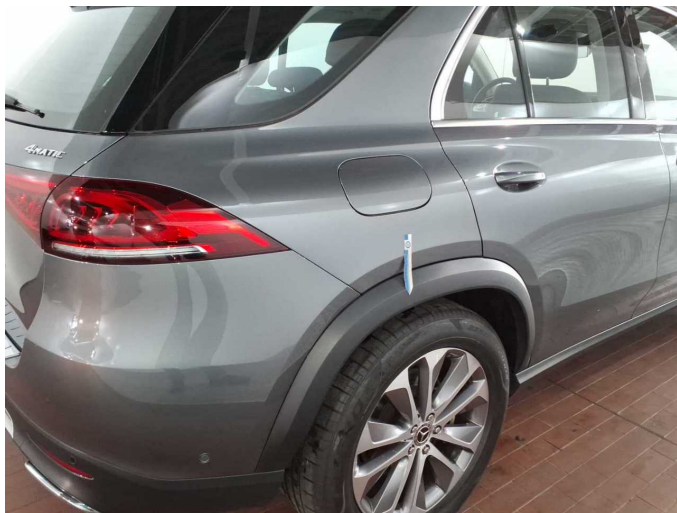


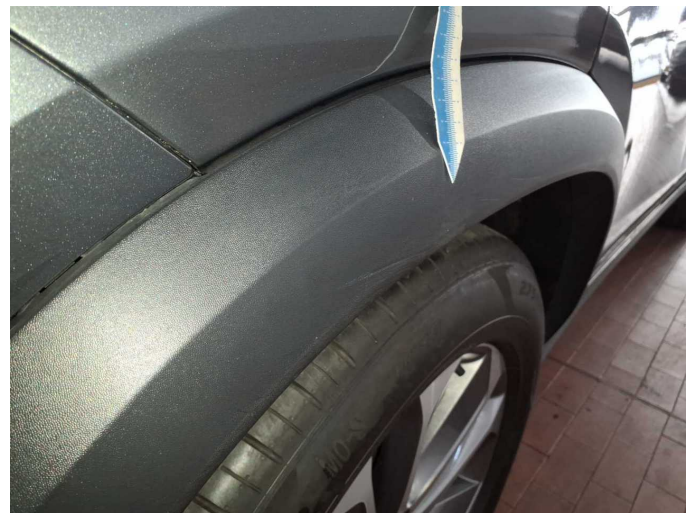
Figure 37: Misc.



Figure 38: Misc.



Damage 1: Side panel - rear right side: Wheel arch - Scratched - Smart repair



Damage 1: Side panel - rear right side: Wheel arch - Scratched - Smart repair



Damage 1: Side panel - rear right side: Wheel arch - Scratched - Smart repair



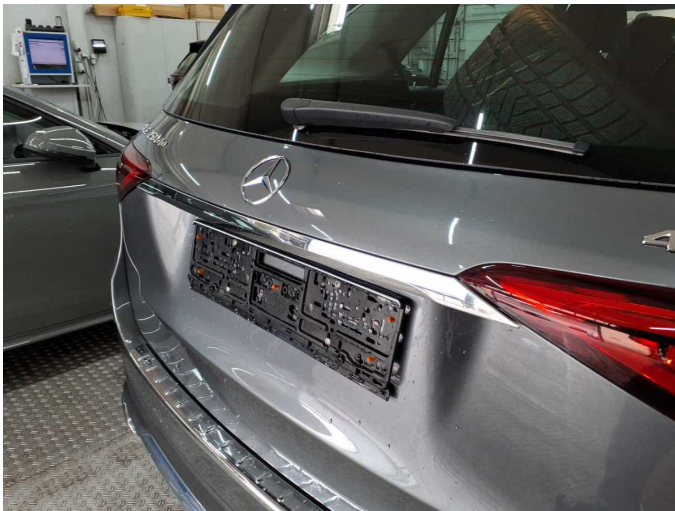
Damage 2: Boot lid / rear door: Boot lid (Zierleiste, Klebefestigung lose) - Unprofessionally repaired - Replace



Damage 2: Boot lid / rear door: Boot lid (Zierleiste, Klebefestigung lose) - Unprofessionally repaired - Replace



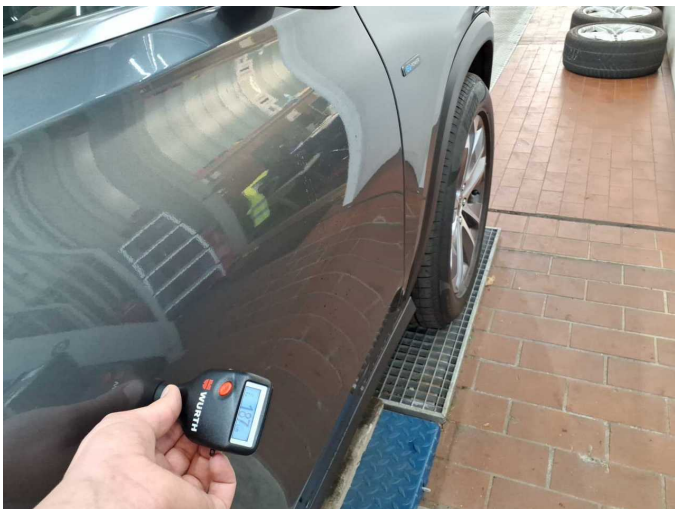
Damage 2: Boot lid / rear door: Boot lid (Zierleiste, Klebefestigung lose) - Unprofessionally repaired - Replace



Damage 2: Boot lid / rear door: Boot lid (Zierleiste, Klebefestigung lose) - Unprofessionally repaired - Replace



Damage 2: Boot lid / rear door: Boot lid (Zierleiste, Klebefestigung lose) - Unprofessionally repaired - Replace



Repainting 1: Boot lid / rear door, Side panel - rear left side, Side panel - rear right side, Door - rear left side, Door - rear right side, Door - front left side, Door - front right side



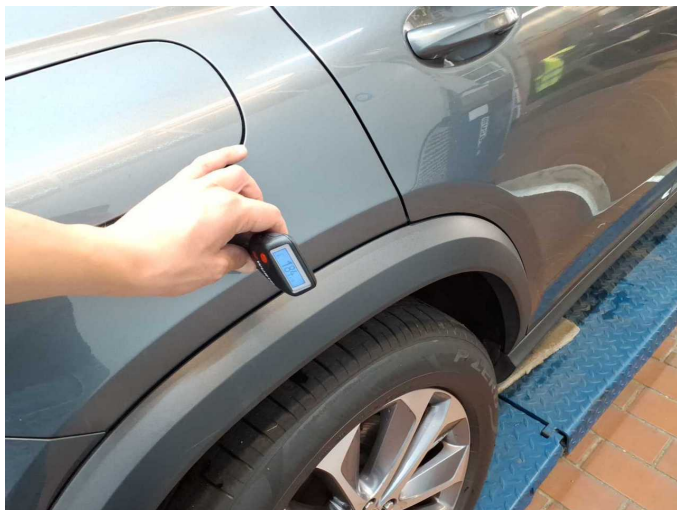
Repainting 1: Boot lid / rear door, Side panel - rear left side, Side panel - rear right side, Door - rear left side, Door - rear right side, Door - front left side, Door - front right side



Repainting 1: Boot lid / rear door, Side panel - rear left side, Side panel - rear right side, Door - rear left side, Door - rear right side, Door - front left side, Door - front right side



Repainting 1: Boot lid / rear door, Side panel - rear left side, Side panel - rear right side, Door - rear left side, Door - rear right side, Door - front left side, Door - front right side



Repainting 1: Boot lid / rear door, Side panel - rear left side, Side panel - rear right side, Door - rear left side, Door - rear right side, Door - front left side, Door - front right side



Repainting 1: Boot lid / rear door, Side panel - rear left side, Side panel - rear right side, Door - rear left side, Door - rear right side, Door - front left side, Door - front right side



Repainting 1: Boot lid / rear door, Side panel - rear left side, Side panel - rear right side, Door - rear left side, Door - rear right side, Door - front left side, Door - front right side



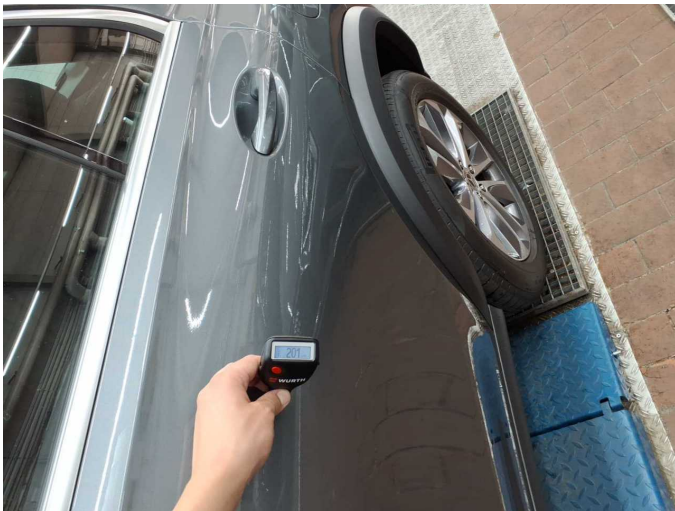
Repainting 1: Boot lid / rear door, Side panel - rear left side, Side panel - rear right side, Door - rear left side, Door - rear right side, Door - front left side, Door - front right side



Repainting 1: Boot lid / rear door, Side panel - rear left side, Side panel - rear right side, Door - rear left side, Door - rear right side, Door - front left side, Door - front right side



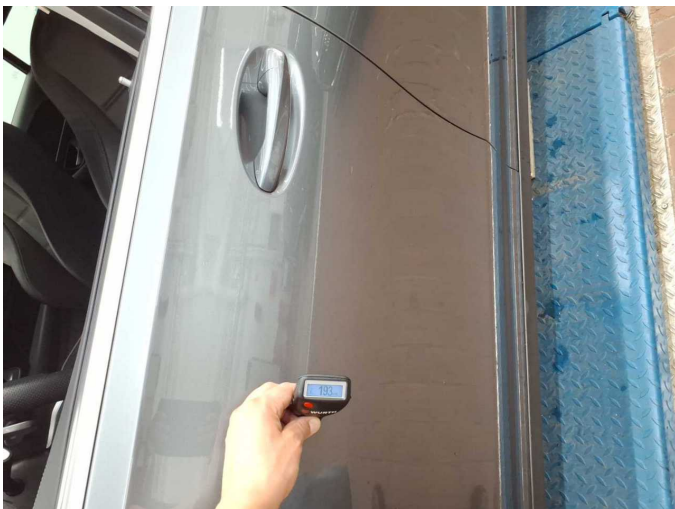
Repainting 1: Boot lid / rear door, Side panel - rear left side, Side panel - rear right side, Door - rear left side, Door - rear right side, Door - front left side, Door - front right side



Repainting 1: Boot lid / rear door, Side panel - rear left side, Side panel - rear right side, Door - rear left side, Door - rear right side, Door - front left side, Door - front right side



Repainting 1: Boot lid / rear door, Side panel - rear left side, Side panel - rear right side, Door - rear left side, Door - rear right side, Door - front left side, Door - front right side



Repainting 1: Boot lid / rear door, Side panel - rear left side, Side panel - rear right side, Door - rear left side, Door - rear right side, Door - front left side, Door - front right side



Repainting 1: Boot lid / rear door, Side panel - rear left side, Side panel - rear right side, Door - rear left side, Door - rear right side, Door - front left side, Door - front right side



Wartungshistorie

(gemäß Auftraggeber Informationen)

Fahrgestellnummer: W1N1671171A494835

Hersteller / Modell: MERCEDES-BENZ MB GLE 350 de 4Matic 9G-TRONIC AMG Line

Datum	KM-Stand	Beschreibung
09.12.2024	124.915	HU + AU
25.11.2024	124.915	Regelwartungsdienst
28.03.2024	100.315	Regelwartungsdienst
05.07.2023	73.719	Regelwartungsdienst
19.09.2022	46.144	Regelwartungsdienst
22.02.2022	23.597	Regelwartungsdienst