



Expertise

Protocol number: 41700217  
Order No. / Reference: 25237539  
Inspection date: 25 Sept 2025

Manufacturer: Mercedes-Benz

Model: GLE 350 de 4Matic 9G-TRONIC AMG Line

VIN: W1N1671171A328219



Vehicle details	
Manufacturer / Type / Model / Equipment	
Mercedes-Benz GLE 350 de 4Matic 9G-TRONIC AMG Line	
Vehicle Identification number	W1N1671171A328219
Mileage (Read)	35,778 km
First registration	3 Dec 2020
Number of holders	1
Power / Engine displacement	143 kw / 1,950 ccm
Fuel type / Cylinder	Hybr.D/E ext. edition / 4
Gearbox / Number of gears	Automatic / 9
Type of drive	All-wheel drive
Type of vehicle	SUV
Colour / colour code	MOJAVESILVER METALLIC
Doors / Seats	5 / 5
Upholstery type	Alcantara / Leather
Colour of upholstery	Black-Anthracite
Driving readiness	Not roadworthy / moveable



## Vehicle details

<b>Maintenance booklet / proof</b>	Non-existent	<b>Next maintenance in</b>	178 Tag(e)
<b>Key is / should be</b>	2 / 2	<b>FZG documents</b>	ZB#2 (B) was available (copy), ZB#1 (S) was not available
		<b>Letter No.</b>	FX741702
<b>Previous damage / Accident</b>	Detectable	<b>Repainting</b>	Detectable
<b>Inspection conditions</b>	sufficient	<b>Lifting equipment / pit</b>	yes
<b>Test drive</b>	Not performed	<b>Engine function test</b>	With complaint
<b>Driving readiness</b>	Not roadworthy / moveable		
<b>Manufacturer key number/ type code number</b>	2222 / AFH 00052		
<b>Emission standard</b>	EURO6;WLTP;AP;PI/CI; M, N1 I	<b>Fine dust sticker</b>	
<b>Permitted total weight</b>	3,260 kg	<b>Empty weight</b>	

## Tyres

### Mounted tyres

#	Tyre size	Type of tyre	Manufacturer	Tread depth
1)	275/50 R20 113W	Summer tyres on Light alloy	Dunlop	7mm / 7mm
2)	275/50 R20 113W	Summer tyres on Light alloy	Dunlop	7mm / 7mm

### Additional tyres

#	Tyre size	Type of tyre	Manufacturer	Tread depth
1)	275/50 R20 113V	Winter tyres on Light alloy	Goodyear	7mm / 7mm
2)	275/50 R20 113V	Winter tyres on Light alloy	Dunlop	8mm / 8mm

**Legend:** Tread depth information for tires on the left is in the first place, for tires on the right is in the second place on the axle in the direction of travel



## Equipment

### Standard equipment

- Exhaust system with 2 chrome-plated tailpipe trims
- Adaptive High Beam Assistant
- Airbag: driver and passenger side
- Airbag: Sidebag for driver and front passenger (combined thorax/pelvis bag)
- Active Lane Keeping Assist
- 4MATIC permanent all-wheel drive
- AMG floor mats in black velour with "AMG" lettering
- Anti-lock braking system
- Traction control (ASR)
- Armrest in the rear
- Automatic passenger airbag deactivation
- Brake Assist BAS
- diesel particulate filter
- tachometer
- EASY-Pack tailgate with electric operation for opening and closing
- Front door sills with "Mercedes-Benz" lettering illuminated in white
- Chassis with steel suspension and lowering
- Electric parking brake
- Transmission: 9G-TRONIC
- Rear window heated
- Rear window wiper with interval control
- KEYLESS-GO start function
- Climate: THERMATIC automatic climate control
- 5-way headrests
- Radiator cover with 2 chrome-plated slats in SUV design
- Charging system: AC on-board charger 7.4 kW (AC)
- Steering wheel: Multifunction sports steering wheel in nappa leather
- Mercedes-Benz emergency call system
- Navigation accessories: Pre-equipment for navigation services
- Package: Chrome package interior
- Package: Mirror Package
- PRE-SAFE system
- Radio accessories: Digital radio (DAB)
- Tire pressure monitoring (TPMS)
- Rear view camera
- Power steering
- Seats: Heated seats for driver and passenger seats
- Seats: Sports seats for driver and front passenger with specific seat graphics
- High-visibility vest for drivers
- Widescreen cockpit
- Central locking with interior switch
- ADAPTIVE BRAKE
- Adaptive brake light
- Airbag: Kneebag for driver
- Airbag: Windowbags
- Active Brake Assist
- Acoustic environmental protection
- Ambient lighting
- AMG sports pedal system made of brushed stainless steel with black rubber studs
- Foldable armrest for driver and passenger
- ATTENTION ASSIST
- Exterior mirrors electrically adjustable and heated
- Roof rails in aluminum look
- Downhill speed regulation (DSR)
- Third brake light
- EASY-Pack load compartment cover (removable)
- ECO start-stop function
- Electronic Stability Program
- Electronic Traction System for All-Wheel Drive (4ETS)
- Electric windows, front and rear
- Speed Limit Assistant
- Lockable, air-conditioned and illuminated glove compartment
- Interior headliner fabric crystal grey
- Mechanical child safety locks in the rear doors
- Communication module (LTE) for the use of Mercedes me connect services
- Charging cable for household socket, 5m, smooth
- LED high-performance headlights
- Steering column mechanically adjustable for length and height
- Navigation accessories: Advanced functions MBUX
- Navigation: Hard drive navigation
- Package: Chrome
- Package: Parking package with rear view camera
- Upholstery: ARTICO man-made leather/DINAMICA microfiber
- Radio accessories: Additional USB interfaces
- Wheels: 48.3 cm (19") alloy wheels in multi-spoke design
- Windscreen wipers with rain sensor
- 3-point seat belts
- Seats: Folding seat backrests in the rear
- Phone accessories: Smartphone integration
- Cruise control with variable speed limiter
- Immobiliser
- Heat-insulating glass, all around
- Decorative elements: brushed aluminum with light longitudinal grain

### Extra equipment



- Interior headliner fabric black
- Paint finish: metallic
- Charging cable for household socket type E/F (Mode 2) 8 m, smooth
- Charging system: DC on-board charger (DC charging)
- MULTIBEAM LED (84 individually controllable high-performance LEDs per headlight - low beam and high beam with LED projection technology - Adaptive High Beam Assist Plus - ULTRA RANGE high beam with 650 m range (maximum legally permitted beam range) - cornering light or cornering light with roundabout and intersection function - active cornering light - extended fog light, city light, country road light, motorway light and bad weather light - off-road light - adaptive full-LED rear lights)
- Package: Driving Assistance Package (Active Distance Assist - DISTRONIC - Active Steering Assist - Active Brake Assist - Evasive Steering Assist - Active Lane Keeping Assist - Active Blind Spot Assist - PRE-SAFE PLUS)
- Package: Memory Package (driver and front passenger seats, steering column, and exterior mirrors electrically adjustable and memorizable - seat fore/aft position and headrest height also electrically adjustable - 4-way lumbar support for driver and front passenger - seat cushion depth adjustment with gap-free cushion - PRE-SAFE positioning function for the front passenger seat - front passenger seat operation for driver)
- Package: Parking Package
- Package: Public Charging (Includes charging cable for wallbox and public charging stations, 5m, smooth, and Remote and Charging Services Plus)
- Package: Smoker's package (traveling ashtray - holder in the door panels - cigarette lighter in the center console)
- Wheels: 50.8 cm (20") AMG light-alloy wheels in 5-twin-spoke design (painted high-gloss black with a high-sheen finish with 275/50 R 20 front wheels on 9.0 J x 20 ET 57, 275/50 R 20 rear wheels on 9.0 J x 20 ET 44)
- Heated windscreen washer system (including washer fluid reservoir, windscreen washer nozzles and washer fluid hoses)
- Phone: Multifunctional telephony (wireless connection of mobile phone with external antenna - wireless charging for compatible mobile phones - Bluetooth and Wi-Fi pairing wirelessly via NFC (Near Field Communication) technology)
- Winter wheels
- Instrument panel and door edges in ARTICO man-made leather (Instrument panel in ARTICO man-made leather - Door edges in ARTICO man-made leather)
- Charging cable for wallbox and public charging stations Type 2 (Mode 3) 8 m, smooth
- Package: AMG Line Exterior (diamond grille with chrome pins, integrated Mercedes star and 1 slat painted in matt iridium silver with chrome inserts - AMG Styling: AMG front apron with chrome trim, sporty, distinctive air intakes in the wheel arch trim, front and rear fender flares in body color, AMG side skirts, AMG rear apron with diffuser insert in black look and chrome trim - AMG LMR in 5-twin-spoke design, tremolite gray painted and high-gloss with front 275/50 R 20 on 9 J x 20 ET 57, rear 275/50 R 20 on 9 J x 20 ET 44)
- Package: MBUX Innovation Package
- Package: MBUX Innovations Package (MBUX Interior Assistant - Head-up Display - MBUX Augmented Reality for Navigation - Full-screen navigation in the instrument cluster. Enjoy hands-free operating convenience with the MBUX Interior Assistant: the innovative system detects and interprets your hand and arm movements. Selected functions can be activated in a flash. The system can distinguish between driver and passenger, so you can access exactly the menus you want to use.)
- Package: Night (diamond grille with chrome pins and slats in high-gloss black. -AMG alloy wheels in 5-twin-spoke design, high-gloss black lacquer and glossy, with front axle 275/50 R 20 on 9.0 x 20 ET 57, rear axle 275/50 R 20 on 9.0 x 20 ET 44 -AMG front spoiler in A-wing design with trim strip in high-gloss black. -AMG rear spoiler with diffuser in high-gloss black and trim strip in high-gloss black. -Air intakes in radiator grille and front spoiler -Roof rails in matt black - Heat-insulating dark-tinted glass from B-pillar -Exterior mirror housings in high-gloss black paint -Window line trim and beltline trim in black)
- Sunroof: Panoramic sunroof (large glass module made of heat-insulating, tinted safety glass - mesh wind deflector in the front area - electric sunblind with one-touch operation - comprehensive protection concept: - anti-pinch protection - automatic rain closing - PRE-SAFE closing function (only in conjunction with PRE-SAFE system))
- Partition net for luggage compartment separation and occupant protection
- Heat-insulating dark tinted glass



## Brief expert findings

Documents submitted	At the time of the inspection, the registration certificate Part 2 (letter) was available, but the registration certificate Part 1 (certificate) was not. (Copy)
VIN comparison	The vehicle identification number (VIN) was read from the vehicle and its conformity with the submitted documents was verified during the inspection by the undersigned.
Inspection	The inspection conditions were sufficient for the assessment of the vehicle. Lifting equipment and a pit were available for examining the vehicle.
Test drive	No test drive/maneuvering was carried out during the inspection of the vehicle.
Engine function test	An engine test run was performed, problem has been detected This is due to the following reason: Motorkontrolle
Driving readiness	At the time of inspection, the vehicle was not drivable under its own power, but can be moved on its own axle with the aid of auxiliary equipment.

## Value reducing factors

No.	Component group	Description
1	Indicator - front	Mirror - left side - Scratch(es) - Replace
2	Wing mirror - right side	Cap - Scratch(es) - Paint
3	Rear bumper	Spoiler - Scratch(es) - Loss in value
4	Instrument panel	Indicator light (Motorkontrolleuchte) - on - Perform diagnosis
5	Wheel / tyres	Alloy rim - rear right side - Scratch(es) - Loss in value
6	Boot lid / rear door	Boot lid - Dent / paintcoat damage - Repair and paint
7	Front bumper	Front bumper (Lackstift) - Paint defect - Paint
8	Door - rear right side	Door - Dent / paintcoat damage - Repair and paint

## Wear and tear

No.	Component group	Description
1	Boot lid / rear door	Boot lid (Zierleiste) - Scratch(es) - No deduction
2	Vehicle glazing	Windscreen - Stone chips - No deduction
3	Bonnet	Bonnet - Stone chips - No deduction
4	Side panel - rear right side	Wheel well extension - Scratch(es) - No deduction
5	Wing mirror - left side	Mirror housing - Scratch(es) - No deduction
6	Trim / covers	Boot lid - interior trim - Scratch(es) - No deduction
7	Trim / covers	Cargo area - lining - right side - Scratch(es) - No deduction
8	Braking system	Brake fluid - No evidence - No deduction
9	Misc.	Inspection / maintenance - No evidence - No deduction
10	Documents	Service book (Digital) - Missing - No deduction

The vehicle shows signs of wear commensurate with its age and use.

## Missing parts

### Description

Equipment - Charging cable (Typ E/F Mode 2)



## Previous damages

No.	Previous damage	Extent of damage (Net)
1	Front, Rear, Provided by user / customer, from 24 Jan 2023	1.986,61 €
2	Rear, Side - left, Provided by user / customer, from 14 Jun 2025	6.151,73 €

## Repainting

### No. Repainting

- |   |  |
|---|--|
| 1 | Bonnet, Door - rear left side, Professionally carried out, Invoice of repair done Non-existent |
|---|--|

## Order/Scope of order

The order was placed to prepare a sales report for the vehicle described. This includes the following:

- Description of core relevant information about the vehicle
- Documentation of equipment features  
(Delivery by third-party service providers)
- Documentation of damage, defects, missing parts
- Documentation of previous damage, unrepaired previous damage, repainting
- a brief visual or functional inspection of the equipment details if possible.  
(Functional tests of driver assistance systems are not included in the scope of services!)
- a photo documentation of the vehicle

## Basis for the order

This product is based on the Alphabet Fuhrpark GmbH guidelines for vehicle returns and valuations. The expert makes the explicit findings in each individual case objectively within the framework of the specified standards based on his or her own expertise.

The vehicle inspection takes place in a disassembled state.

Damage or defects that can only be detected during disassembly/diagnosis work or through advanced knowledge remain within the scope of the prognosis risk. An extended risk exists for concealed defects caused by fraudulent deception and not identifiable by the expert.

Damage or defects resulting from normal use or wear and tear of the vehicle will be accepted according to the applicable standard.

There was no explicit identification or monetary consideration of the expected features within the product.

Features which in their nature and severity slightly exceed normal use but do not constitute unacceptable damage will be documented and identified under signs of use if necessary.

Damage or defects which, according to the underlying standard, can no longer be attributed to normal use or wear and tear are listed in the product under "Depreciating Factors".

Depending on the product specification, a monetary ID can be provided. If this takes place, the costs can be 100% d or pro rata depending on the vehicle's age and mileage.

## Previous damages

According to available information previous damages were repaired at the vehicle. Traces of repairs, which allow conclusions about the area of repair, were not recognizable during the inspection.

## Comments

- Das Fahrzeug weist rundherum erhöhte Lackwerte auf.





Figure 1: Diagonal front (left)



Figure 2: Diagonal front (right)



Figure 3: Diagonal rear (left)



Figure 4: Diagonal rear (right)



Figure 5: Interior - front



Figure 6: Interior - rear





Figure 7: Instrument cluster



Figure 8: Instrument panel



Figure 9: Interior 360° view



Figure 10: Cargo area



Figure 11: VIN



Figure 12: Mounted tyres





Figure 13: Documents



Figure 14: Documents



Figure 15: Additional tyres



Figure 16: Navigation



Figure 17: Misc.



Figure 18: Misc.





Figure 19: Misc.



Figure 20: Misc.



Figure 21: Misc.



Figure 22: Misc.



Figure 23: Misc.

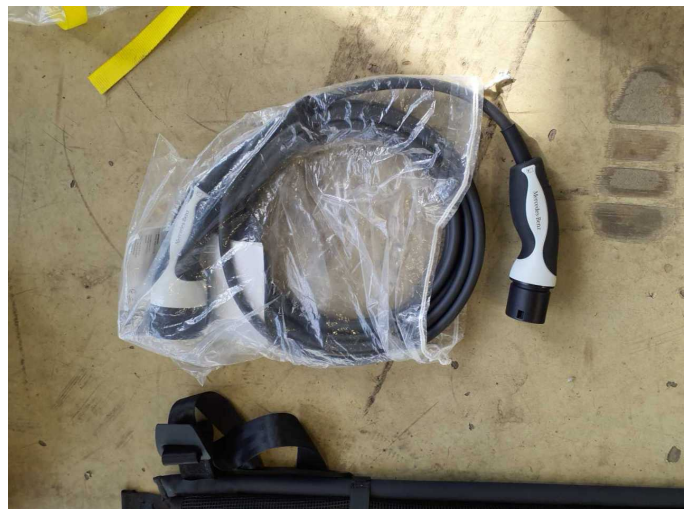


Figure 24: Misc.





**Figure 25:** Misc.



**Figure 26:** Misc.



**Damage 1:** Indicator - front: Mirror - left side - Scratch(es) - Replace



**Damage 1:** Indicator - front: Mirror - left side - Scratch(es) - Replace

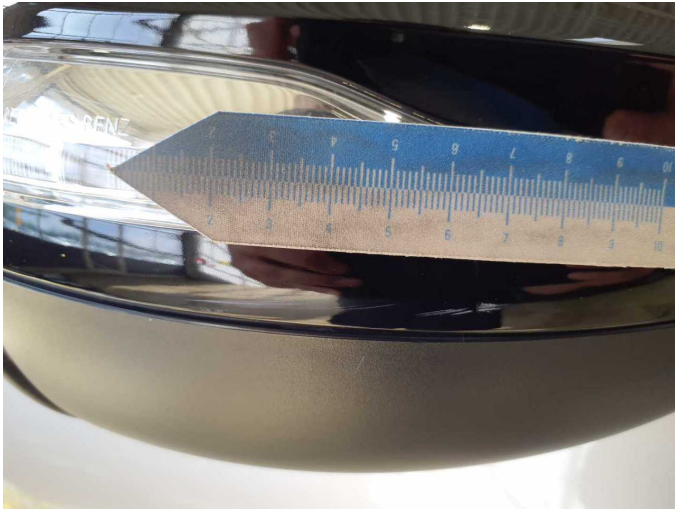


**Damage 1:** Indicator - front: Mirror - left side - Scratch(es) - Replace



**Damage 2:** Wing mirror - right side: Cap - Scratch(es) - Paint





**Damage 2:** Wing mirror - right side: Cap - Scratch(es) - Paint



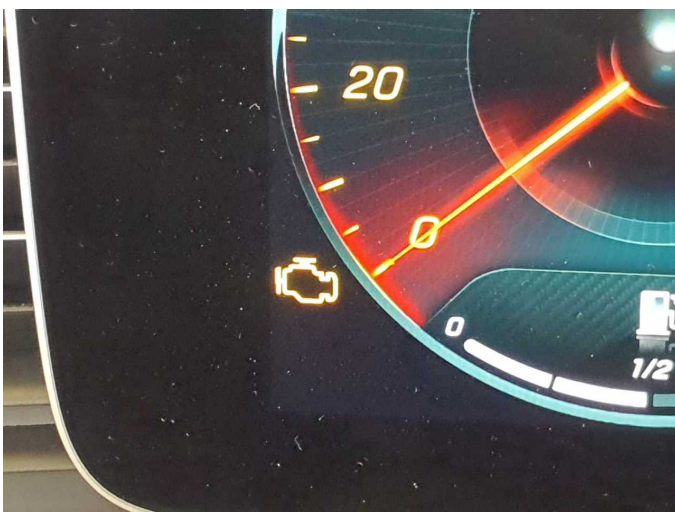
**Damage 2:** Wing mirror - right side: Cap - Scratch(es) - Paint



**Damage 3:** Rear bumper: Spoiler - Scratch(es) - Loss in value



**Damage 3:** Rear bumper: Spoiler - Scratch(es) - Loss in value



**Damage 4:** Instrument panel: Indicator light (Motorkontrolleuchte) - on - Perform diagnosis



**Damage 5:** Wheel / tyres: Alloy rim - rear right side - Scratch(es) - Loss in value





**Damage 5:** Wheel / tyres: Alloy rim - rear right side - Scratch(es) - Loss in value



**Damage 5:** Wheel / tyres: Alloy rim - rear right side - Scratch(es) - Loss in value



**Damage 6:** Boot lid / rear door: Boot lid - Dent / paintcoat damage - Repair and paint



**Damage 6:** Boot lid / rear door: Boot lid - Dent / paintcoat damage - Repair and paint



**Damage 6:** Boot lid / rear door: Boot lid - Dent / paintcoat damage - Repair and paint

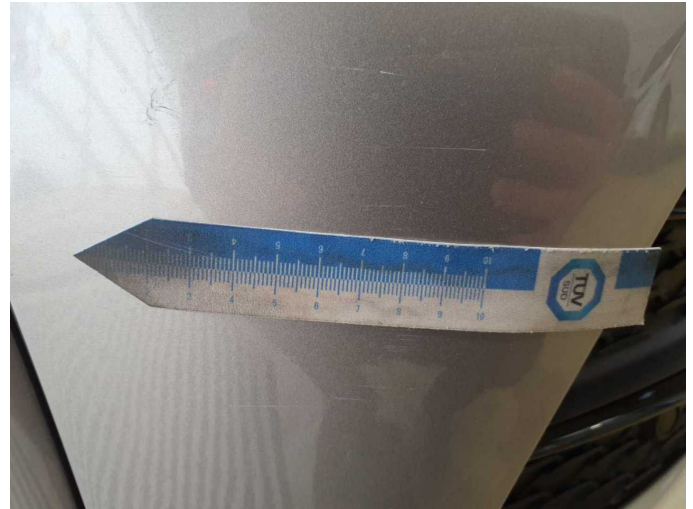


**Damage 7:** Front bumper: Front bumper (Lackstift) - Paint defect - Paint





**Damage 7:** Front bumper: Front bumper (Lackstift) - Paint defect - Paint



**Damage 7:** Front bumper: Front bumper (Lackstift) - Paint defect - Paint



**Damage 7:** Front bumper: Front bumper (Lackstift) - Paint defect - Paint



**Damage 7:** Front bumper: Front bumper (Lackstift) - Paint defect - Paint

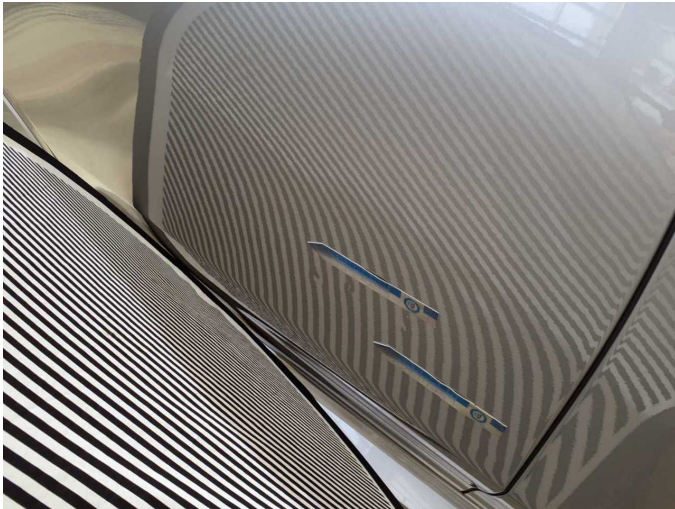


**Damage 7:** Front bumper: Front bumper (Lackstift) - Paint defect - Paint



**Damage 8:** Door - rear right side: Door - Dent / paintcoat damage - Repair and paint





**Damage 8:** Door - rear right side: Door - Dent / paintcoat damage - Repair and paint



**Damage 8:** Door - rear right side: Door - Dent / paintcoat damage - Repair and paint



**Damage 8:** Door - rear right side: Door - Dent / paintcoat damage - Repair and paint



**Damage 8:** Door - rear right side: Door - Dent / paintcoat damage - Repair and paint



**Damage 8:** Door - rear right side: Door - Dent / paintcoat damage - Repair and paint



**Wear and tear 5:** Wing mirror - left side: Mirror housing - Scratch(es) - No deduction





**Wear and tear 5:** Wing mirror - left side: Mirror housing - Scratch(es) - No deduction



**Wear and tear 6:** Trim / covers: Boot lid - interior trim - Scratch(es) - No deduction



**Wear and tear 6:** Trim / covers: Boot lid - interior trim - Scratch(es) - No deduction



**Wear and tear 6:** Trim / covers: Boot lid - interior trim - Scratch(es) - No deduction



**Wear and tear 6:** Trim / covers: Boot lid - interior trim - Scratch(es) - No deduction



**Wear and tear 7:** Trim / covers: Cargo area - lining - right side - Scratch(es) - No deduction



**Wear and tear 7:** Trim / covers: Cargo area - lining - right side -  
Scratch(es) - No deduction



**Repainting 1:** Bonnet, Door - rear left side



**Repainting 1:** Bonnet, Door - rear left side



**Repainting 1:** Bonnet, Door - rear left side



**Repainting 1:** Bonnet, Door - rear left side