



Expertise

Protocol number: 41429056
Order No. / Reference: 25032822
Inspection date: 9 Sept 2025

Manufacturer: Mercedes-Benz	Model: GLE 350 de 4Matic 9G-TRONIC AMG Line
VIN: W1N1671171A268608	



Vehicle details	
Manufacturer / Type / Model / Equipment	
Mercedes-Benz GLE 350 de 4Matic 9G-TRONIC AMG Line	
Vehicle Identification number	W1N1671171A268608
Mileage (Read)	158,011 km
First registration	5 Nov 2020
Number of holders	1
Next periodical technical inspection	10/2025
(Report on hand)	
Power / Engine displacement	143 kw / 1,950 ccm
Fuel type / Cylinder	Hybr.D/E ext. edition / 4
Gearbox / Number of gears	Automatic / 9
Type of drive	All-wheel drive
Type of vehicle	SUV
Colour / colour code	SCHWARZ - UNILACK
Doors / Seats	5 / 5
Upholstery type	Leather
Colour of upholstery	Black-Anthracite
Re/Import	no
Vehicle with smoke odor	no
Driving readiness	Roadworthy



Vehicle details

Maintenance booklet / proof	Available / complete	Next maintenance in	15,693 km
Last maintenance on / at	05/2024 at 125,482 km		
Key is / should be	2 / 2	FZG documents	ZB#2 (B) was available (copy), ZB#1 (S) was not available
		Letter No.	FT867038
Previous damage / Accident	None detectable	Repainting	None detectable
Inspection conditions	sufficient	Lifting equipment / pit	yes
Test drive	short drive on the company premises	Engine function test	Performed
Driving readiness	Roadworthy		
Manufacturer key number/ type code number	2222 / AFH 00028		
Emission standard	EURO6;WLTP;AP;PI/CI; M, N1 I	Fine dust sticker	
Permitted total weight	3,260 kg	Empty weight	

Tyres

Mounted tyres

#	Tyre size	Type of tyre	Manufacturer	Tread depth
1)	275/50 R20 113W	Summer tyres on Light alloy	Pirelli	7mm / 7mm
2)	275/50 R20 113W	Summer tyres on Light alloy	Pirelli	7mm / 7mm

Additional tyres

#	Tyre size	Type of tyre	Manufacturer	Tread depth
1)	275/50 R20 113V	Winter tyres on Light alloy	Continental	5mm / 5mm
2)	275/50 R20 113V	Winter tyres on Light alloy	Continental	7mm / 7mm

Replacement

Typ	Tyre size	Type of tyre	Manufacturer	Tread depth
	Tirefit	Expiration date 05/2025		

Legend: Tread depth information for tires on the left is in the first place, for tires on the right is in the second place on the axle in the direction of travel



Equipment

Standard equipment

- Exhaust system with 2 chrome-plated tailpipe trims
- Adaptive High Beam Assistant
- Adaptive brake light (flashing)
- Airbag: Kneebag for driver
- Airbag: Windowbags
- Active Brake Assist
- Acoustic Surrounding Area Protection (To ensure that your vehicle does not pose a danger to pedestrians and cyclists, even when driving purely electrically and almost silently, the Acoustic Surrounding Area Protection generates a Mercedes-Benz-specific sound outside the vehicle up to a speed of 30 km/h.)
- Anti-lock braking system
- Traction control (ASR)
- Foldable armrest for driver and passenger (with compartment)
- ATTENTION ASSIST (can detect typical signs of fatigue through driver behavior and warn the driver of increasing fatigue or inattention)
- Roof rails in aluminum look
- diesel particulate filter
- tachometer
- Third brake light
- EASY-Pack tailgate with electric operation for opening and closing
- ECO start-stop function
- Electronic Stability Program (ESP)
- Electronic Traction System for All-Wheel Drive (4ETS)
- Electric windows, front and rear
- Electric parking brake
- Speed Limit Assistant (camera behind the windshield - uses image recognition to determine the maximum speed limit for the current route based on the relevant signage - if there are no signs, additional information such as lane width can be used to determine the maximum speed limit - display of speed limits including additional restrictive signs in the instrument cluster and in the optionally available)
- Interior headliner fabric crystal grey
- KEYLESS-GO start function
- Climate: THERMATIC automatic climate control (2-zone automatic climate control: allows individually adjustable temperatures for the driver and passenger sides - Control of climate settings via the instrument panel controls or the touch display - Sensor system for recording, for example, interior/outside temperature, sunlight, humidity, and dew point - Combined activated carbon filter for filtering dust, soot, and pollen - Window demisting sensor - Air recirculation by pressing the button for 2 seconds (with sunroof closing))
- Paint finish: Uni
- Charging system: AC on-board charger 7.4 kW (AC)
- ADAPTIVE BRAKE (with HOLD function - including hill start assist and dry braking in wet conditions)
- Airbag: driver and passenger side
- Airbag: Sidebag for driver and front passenger (combined thorax/pelvis bag)
- Active Lane Keeping Assist
- 4MATIC permanent all-wheel drive
- Ambient lighting (ambient lighting in 64 colors - all colors can be selected individually - brightness of the lighting zones can be selected from 0 to 100% frei - nine color schemes with different color combinations - Dynamic mode: atmospheric color change through slow, continuous transition between different colors - Climate effect: color feedback when the temperature setting is changed - Welcome effect: special lighting when entering the vehicle)
- Armrest in the rear (folding)
- Automatic passenger airbag deactivation
- Exterior mirrors electrically adjustable and heated
- Brake Assist BAS (with brake force support when emergency braking is detected)
- Downhill Speed Regulation (DSR) (speed adjustment between 2 and 18 km/h via cruise control - switch for switching on and off in the center console - display on the multimedia screen)
- EASY-Pack load compartment cover (removable)
- Front door sills with "Mercedes-Benz" lettering illuminated in white
- Chassis with steel suspension and lowering (steel suspension with passive damping system)
- Velour floor mats (in interior color)
- Transmission: 9G-TRONIC (9-speed torque converter transmission - DIRECT SELECT selector lever - DIRECT SELECT steering wheel shift paddles - DYNAMIC Select)
- Lockable, air-conditioned and illuminated glove compartment
- Heated rear window (with timer control)
- Rear window wiper with interval control (and automatic activation when reversing)
- Mechanical child safety locks in the rear doors (and electric ones for the rear windows)
- Communication module (LTE) for using Mercedes me connect services (The communication module (LTE) offers you a clear advantage in terms of convenience and safety. It constantly connects the vehicle to the internet, allowing you to use helpful services such as Live Traffic Information from Mercedes me connect. Two mobile network antennas and an LTE-capable SIM card ensure a fast connection.)
- 5-way headrests (adjustable in height and angle)
- Radiator cover with 2 chrome-plated slats in SUV design



- LED High Performance headlights (signal light with trifunctional flare for daytime running light, position light and direction indicator in LED light guide technology with thick-walled optics, high beam in LED reflection technology, dipped beam in LED projection technology, the rear light elements in LED technology: all lighting functions in full LED technology, tail light, brake light and parking light, rear fog light (left-side only), direction indicator in the white light band, reversing light in the white light band)
- Steering column mechanically adjustable for length and height
- Navigation accessories: Pre-installation for navigation services (Wherever you go, you'll always be well informed. Your vehicle will answer questions about your trip and provide you with information about current gas station prices at your destination, the number of available parking spaces, and the current weather. This makes planning your trip even easier.)
- Package: Chrome (window line trim strip and underbody protection front and rear, chrome-plated beltline trim strip)
- Package: Parking package with rear view camera (Active Parking Assist with PARKTRONIC)
- Package: Mirror package (both exterior mirrors electrically foldable (button in the driver's door control panel) - automatic lowering of the passenger mirror glass to the parking position when reverse gear is engaged - interior mirror and exterior mirror on the driver's side automatically dimmable - ambient lighting in both exterior mirrors: with projection of the brand logo to illuminate the entry area)
- Radio accessories: Digital radio (DAB)
- Tire pressure monitoring (TPMS)
- Rear view camera
- Windscreen wipers with rain sensor
- Power steering
- Seats: Comfort seats
- Seats: Heated seats for driver and passenger seats
- Seats: Folding rear seat backrests (40/20/40 split)
- Seats: Front seats electrically adjustable
- Cruise control with variable speed limiter
- High-visibility vest for drivers
- Immobiliser
- Widescreen Cockpit (instrument display and media display as a visual unit under a continuous cover glass - display cluster consisting of two fully digital color displays in flatscreen design, each with a screen diagonal of 12.3 inches and a resolution of 1920 x 720 pixels - touchscreen version for the media display - display styles: "Classic," "Sport," "Progressive," and "Subtle")

Extra equipment

- Trailer hitch with ESP trailer stabilization
- Instrument panel and door edges in ARTICO man-made leather (Instrument panel in ARTICO man-made leather - Door edges in ARTICO man-made leather)
- Loading sill protection in chrome look

- Charging cable for household sockets, 5 m, smooth (This charging cable, also called a Mode 2 cable, allows you to charge your vehicle battery from a household socket with up to 2.3 kW (230 V, 1-phase, 10 A) and is compatible with type E/F CEE 7/7 sockets.)
- Steering wheel: Multifunction sports steering wheel in nappa leather (The multifunction sports steering wheel in nappa leather with black control panels will delight you with every glance and every touch. The soft nappa leather is of exquisite quality. Thus, the steering wheel always conveys a passion for high-quality automotive details.)
- Mercedes-Benz emergency call system
- Navigation accessories: Advanced MBUX functions (personalization (profiles) and prediction functions - LINGUATRONIC with natural language understanding - activation via "Hey Mercedes" - Wi-Fi hotspot - Internet radio)
- Navigation: Hard drive navigation (Mercedes-Benz look and feel of the navigation system, all map data stored on the hard drive - fast hard drive navigation - destination input via touch function or voice control - route calculation including intermediate destinations - numerous route options and avoidance options - 3D image of the upcoming maneuver and lane recommendation - easy switching of views from 2D to 3D and vice versa - compass - route recording function (requires a USB device to be connected to the multimedia system))
- Upholstery: ARTICO black man-made leather
- PRE-SAFE system (with reversible belt tensioners for driver and front passenger seats and closing function for side windows)
- Radio accessories: Additional USB interfaces
- Wheels: 48.3 cm (19") multi-spoke alloy wheels (vanadium silver painted with 255/50 R 19 on 8 J x 19 ET 61)
- 3-point seat belts (including mechanical belt height adjustment and belt force limiter for driver and front passenger as well as automatic belt height adjustment in the rear outside)
- Phone accessories: Smartphone integration (Android Auto and Apple CarPlay). Smartphone integration connects the mobile phone to the media system via Apple CarPlay and Android Auto.
- Heat-insulating glass, all around
- Central locking with interior switch (including automatic locking (can be switched off) and crash sensor with emergency opening)
- Decorative elements: brushed aluminum with light longitudinal grain

- Interior headliner fabric black
- Charging cable for household socket type E/F (Mode 2) 8 m, smooth
- Charging cable for wallbox and public charging stations Type 2 (Mode 3) 8 m, smooth



- Charging system: DC on-board charger (DC charging)
- Navigation Accessory: MBUX Augmented Reality for Navigation (To help you navigate complex traffic situations, MBUX Augmented Reality for Navigation connects the virtual world with the real world. The technology overlays graphic navigation and traffic information onto live images. You'll reach your destination quickly, safely, and stress-free.)
- Package: AMG Line Exterior (diamond grille with chrome pins, integrated Mercedes star and 1 slat painted in matt iridium silver with chrome inserts - AMG Styling: AMG front apron with chrome trim, sporty, distinctive air intakes in the wheel arch trim, front and rear fender flares in body color, AMG side skirts, AMG rear apron with diffuser insert in black look and chrome trim - AMG LMR in 5-twin-spoke design, tremolite gray painted and high-gloss with front 275/50 R 20 on 9 J x 20 ET 57, rear 275/50 R 20 on 9 J x 20 ET 44)
- Package: Parking package with 360° camera (12 sensors: four at the front, four at the rear, two on the sides in the front/rear bumper. Detects parking spaces up to 35 km/h, controls the steering, in conjunction with automatic assists with accelerating, braking, and gear changes. 360° camera. Visual/acoustic warning of detected obstacles in front of/behind the vehicle up to approx. 10 km/h. Rear Cross Traffic Alert warns of detected cross traffic. Drive Away Assist (only in conjunction with automatic transmission). Button on the center console or on the control panel for the assistance systems.)
- Wheels: 50.8 cm (20") AMG light-alloy wheels in 5-twin-spoke design
- Sunroof: Panoramic sunroof (large glass module made of heat-insulating, tinted safety glass - mesh wind deflector in the front area - electric sunblind with one-touch operation - comprehensive protection concept: - anti-pinch protection - automatic rain closing - PRE-SAFE closing function (only in conjunction with PRE-SAFE system))
- TIREFIT with tire inflation compressor
- Partition net for luggage compartment separation and occupant protection
- Heat-insulating dark tinted glass
- MULTIBEAM LED (84 individually controllable high-performance LEDs per headlight - low beam and high beam with LED projection technology - Adaptive High Beam Assist Plus - ULTRA RANGE high beam with 650 m range (maximum legally permitted beam range) - cornering light or cornering light with roundabout and intersection function - active cornering light - extended fog light, city light, country road light, motorway light and bad weather light - off-road light - adaptive full-LED rear lights)
- Package: Driving Assistance Package (Active Distance Assist DISTRONIC - Active Steering Assist - Active Brake Assist - Evasive Steering Assist - Active Lane Keeping Assist - Active Blind Spot Assist - PRE-SAFE PLUS)
- Package: Night (diamond grille with chrome pins and slats in high-gloss black. -AMG alloy wheels in 5-twin-spoke design, high-gloss black lacquer and glossy, with front axle 275/50 R 20 on 9.0 x 20 ET 57, rear axle 275/50 R 20 on 9.0 x 20 ET 44 -AMG front spoiler in A-wing design with trim strip in high-gloss black. -AMG rear spoiler with diffuser in high-gloss black and trim strip in high-gloss black. -Air intakes in radiator grille and front spoiler -Roof rails in matt black - Heat-insulating dark-tinted glass from B-pillar -Exterior mirror housings in high-gloss black paint -Window line trim and beltline trim in black)
- Upholstery: ARTICO man-made leather
- Radio accessories: Burmester surround sound system (with 13 speakers and 590 watts of system power. Experience enhanced performance and exclusivity with the legendary Burmester sound. The high-performance speakers produce first-class surround sound. You can optimize this specifically for the front and rear seats, intensifying the listening experience. A quality that's also visible thanks to the high-quality Burmester logo.)
- Seats: Seat climate control for driver and front passenger seats (seat heating and ventilation)
- Phone: Multifunctional telephony (wireless connection of mobile phone with external antenna - wireless charging for compatible mobile phones - Bluetooth and Wi-Fi pairing wirelessly via NFC (Near Field Communication) technology)
- Decorative elements: anthracite open-pore oak wood

Brief expert findings

Documents submitted	At the time of the inspection, the registration certificate Part 2 (letter) was available, but the registration certificate Part 1 (certificate) was not. (Copy)
VIN comparison	The vehicle identification number (VIN) was read from the vehicle and its conformity with the submitted documents was verified during the inspection by the undersigned.
Inspection	The inspection conditions were sufficient for the assessment of the vehicle. Lifting equipment and a pit were available for examining the vehicle.
Test drive	A short maneuvering and shunting trip was carried out on the company premises.
Engine function test	An engine test run was performed.
Driving readiness	The vehicle was drivable at the time of inspection.



Value reducing factors

No.	Component group	Description
1	Equipment	Tirefit filler - Due - Replace
2	Door - front right side	Door - Scratch(es) - Smart repair
3	Door - rear right side	Door - Scratch(es) - Smart repair
4	Roof	Roof rail - right side - Stone chips - Smart repair
5	Front bumper	Front bumper - Stone chips - Paint
6	Door - front left side	Door - Scratch(es) - Paint
7	Bonnet	Bonnet - Stone chips - Paint
8	Vehicle glazing	Windscreen - Stone chips - Replace

Wear and tear

No.	Component group	Description
1	Rear bumper	Rear bumper - Scratch(es) - No deduction
2	Boot lid / rear door	Boot lid - Scratch(es) - No deduction
3	Body	Body (Waschanlagenspuren) - Scratch(es) - No deduction
4	Mudguard - left side	Mudguard - left side - Stone chips - No deduction
5	Wing mirror - left side	Cap - Scratch(es) - No deduction

The vehicle shows signs of wear commensurate with its age and use.

Order/Scope of order

The order was placed to prepare a sales report for the vehicle described. This includes the following:

- Description of core relevant information about the vehicle
- Documentation of equipment features
(*Delivery by third-party service providers*)
- Documentation of damage, defects, missing parts
- Documentation of previous damage, unrepaired previous damage, repainting
- a brief visual or functional inspection of the equipment details if possible.
(*Functional tests of driver assistance systems are not included in the scope of services!*)
- a photo documentation of the vehicle

Basis for the order

This product is based on the Alphabet Fuhrpark GmbH guidelines for vehicle returns and valuations. The expert makes the explicit findings in each individual case objectively within the framework of the specified standards based on his or her own expertise.

The vehicle inspection takes place in a disassembled state.

Damage or defects that can only be detected during disassembly/diagnosis work or through advanced knowledge remain within the scope of the prognosis risk. An extended risk exists for concealed defects caused by fraudulent deception and not identifiable by the expert.

Damage or defects resulting from normal use or wear and tear of the vehicle will be accepted according to the applicable standard.

There was no explicit identification or monetary consideration of the expected features within the product.

Features which in their nature and severity slightly exceed normal use but do not constitute unacceptable damage will be documented and identified under signs of use if necessary.

Damage or defects which, according to the underlying standard, can no longer be attributed to normal use or wear and tear are listed in the product under "Depreciating Factors".

Depending on the product specification, a monetary ID can be provided. If this takes place, the costs can be 100% d or pro rata depending on the vehicle's age and mileage.



Previous damages

Apparently, no repaired previous damage could be found on the vehicle.

Comments

- Winterradsatz ist kein Bestandteil des Auslieferungsumfangs.



Figure 1: Diagonal front (left)



Figure 2: Diagonal front (right)



Figure 3: Diagonal rear (left)



Figure 4: Diagonal rear (right)



Figure 5: Interior - front



Figure 6: Interior - rear



Figure 7: Instrument cluster



Figure 8: Instrument panel



Figure 9: Interior 360° view



Figure 10: Cargo area

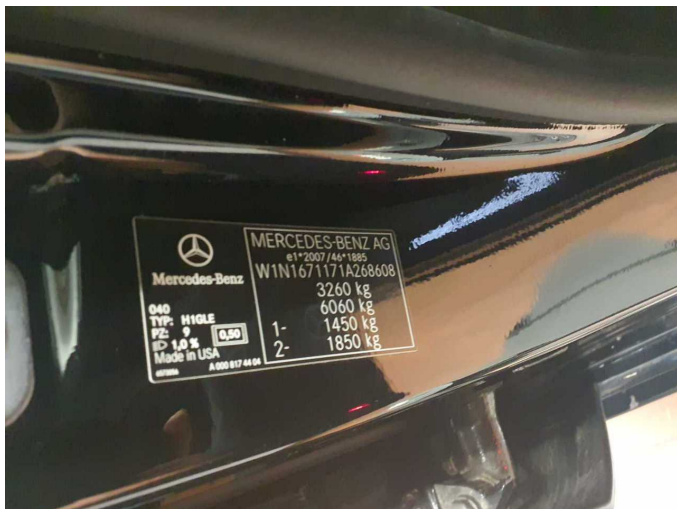


Figure 11: VIN



Figure 12: Mounted tyres

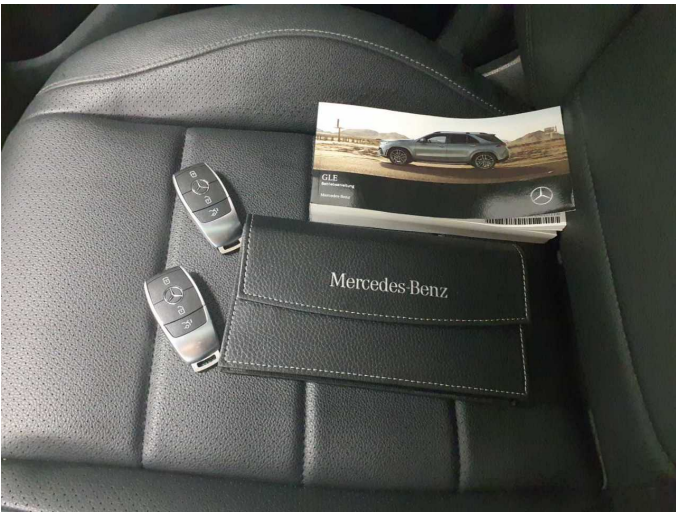


Figure 13: Documents



Figure 14: Documents

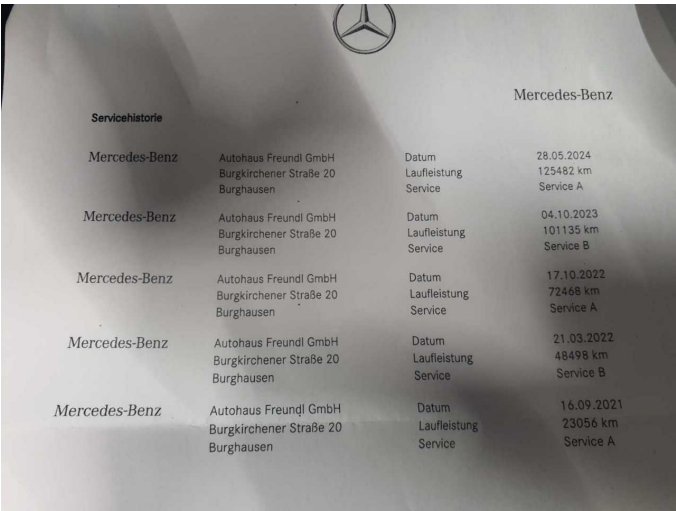


Figure 15: Documents

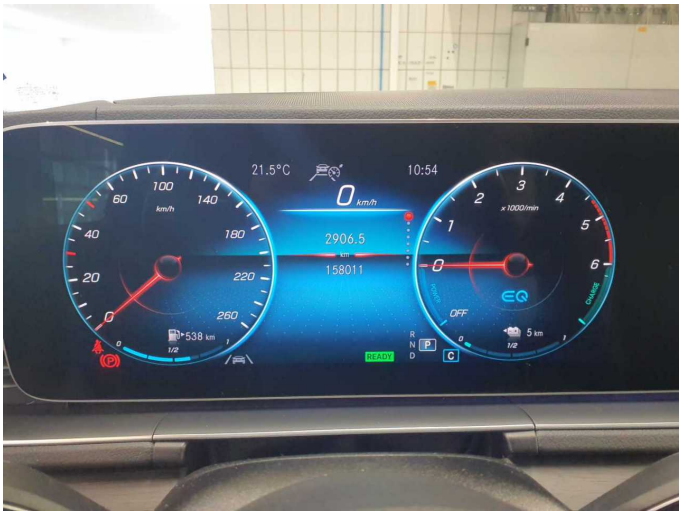


Figure 16: Documents



Figure 17: Documents



Figure 18: Additional tyres



Figure 19: Navigation



Figure 20: Misc.



Figure 21: Misc.



Figure 22: Misc.



Figure 23: Misc.



Figure 24: Misc.



Figure 25: Misc.



Figure 26: Misc.



Figure 27: Misc.



Figure 28: Misc.



Figure 29: Misc.



Figure 30: Misc.



Figure 31: Misc.



Figure 32: Misc.



Figure 33: Misc.

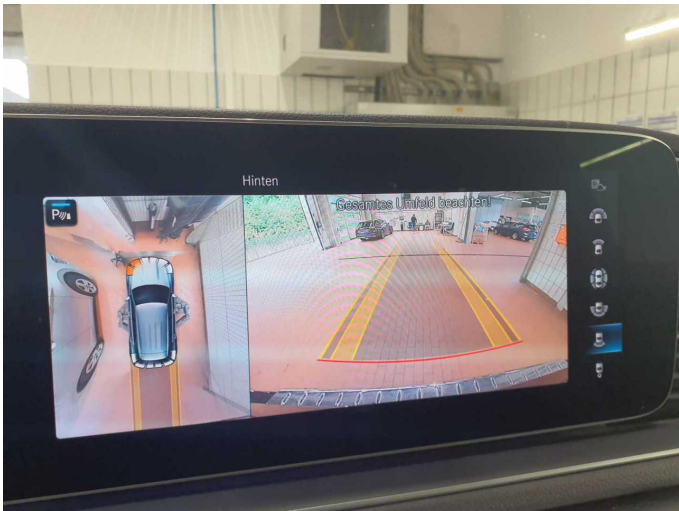


Figure 34: Misc.



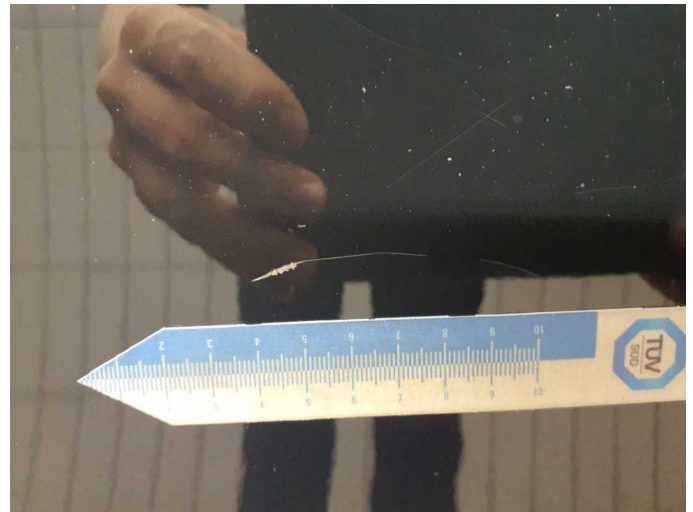
Figure 35: Misc.



Figure 36: Misc.



Damage 1: Equipment: Tirefit filler - Due - Replace



Damage 2: Door - front right side: Door - Scratch(es) - Smart repair



Damage 2: Door - front right side: Door - Scratch(es) - Smart repair



Damage 3: Door - rear right side: Door - Scratch(es) - Smart repair



Damage 3: Door - rear right side: Door - Scratch(es) - Smart repair



Damage 3: Door - rear right side: Door - Scratch(es) - Smart repair



Damage 4: Roof: Roof rail - right side - Stone chips - Smart repair



Damage 4: Roof: Roof rail - right side - Stone chips - Smart repair



Damage 4: Roof: Roof rail - right side - Stone chips - Smart repair



Damage 5: Front bumper: Front bumper - Stone chips - Paint



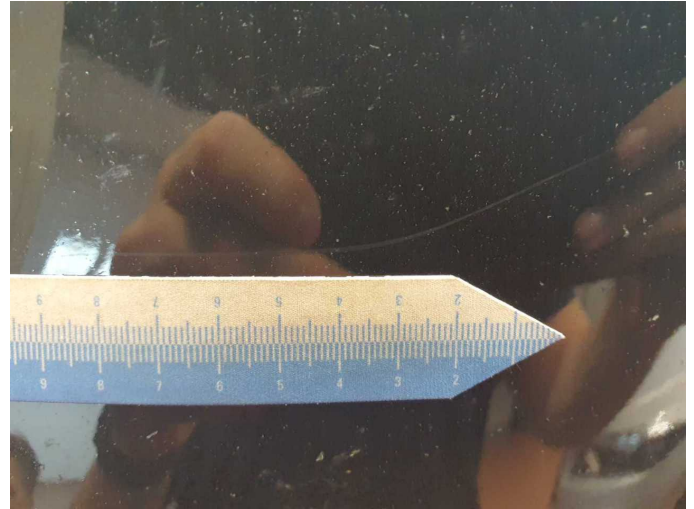
Damage 5: Front bumper: Front bumper - Stone chips - Paint



Damage 5: Front bumper: Front bumper - Stone chips - Paint



Damage 5: Front bumper: Front bumper - Stone chips - Paint



Damage 5: Front bumper: Front bumper - Stone chips - Paint



Damage 5: Front bumper: Front bumper - Stone chips - Paint



Damage 5: Front bumper: Front bumper - Stone chips - Paint



Damage 6: Door - front left side: Door - Scratch(es) - Paint



Damage 6: Door - front left side: Door - Scratch(es) - Paint



Damage 6: Door - front left side: Door - Scratch(es) - Paint



Damage 6: Door - front left side: Door - Scratch(es) - Paint



Damage 7: Bonnet: Bonnet - Stone chips - Paint



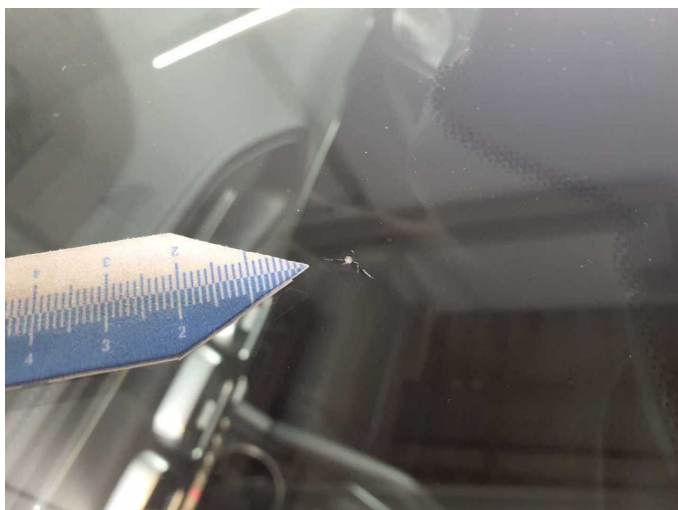
Damage 7: Bonnet: Bonnet - Stone chips - Paint



Damage 7: Bonnet: Bonnet - Stone chips - Paint



Damage 7: Bonnet: Bonnet - Stone chips - Paint



Damage 8: Vehicle glazing: Windscreen - Stone chips - Replace



Damage 8: Vehicle glazing: Windscreen - Stone chips - Replace