



MERCEDES-BENZ E-Klasse  
AMG E 53 4Matic+ T AMG Speedshift TCT-9G

VIN NO W1KZH6BB5PB105509  
Registration Number B5PB105509



MOT Date	Number of Owners	Number of Keys	Odometer Reading
-	1	2	76188 km
Last Service	Last Service Mileage	First Registration Date	Country First Registered
2024-06-19	50928	2022-09-08	-

Inspection Report Summary

Customer	BCA Online	Report Number	P20250924111318
Inspection Date / Place	2025-09-24 / BCA Neuss	Cosmetic Grade	2

Vehicle Summary

Vehicle Condition	Runner	VAT Type	Qualifying
Fuel Type	Petrol	Road Worthy	Yes
Colour	Black	Engine Size (cc)	2999
Engine Size	3.0	No of Doors	5
Body Type	Stationwagon / Estate	Drive Train	All-Wheel-Drive permanent
Seat Colour		No of Seats	5
Seat Covering Name	Schwarz	Seat Covering	Cloth/Synthetic Leather
Charging Cables		WLTP CO2 Emissions	
Gearbox Type	Automatic		

Vehicle History & Documents

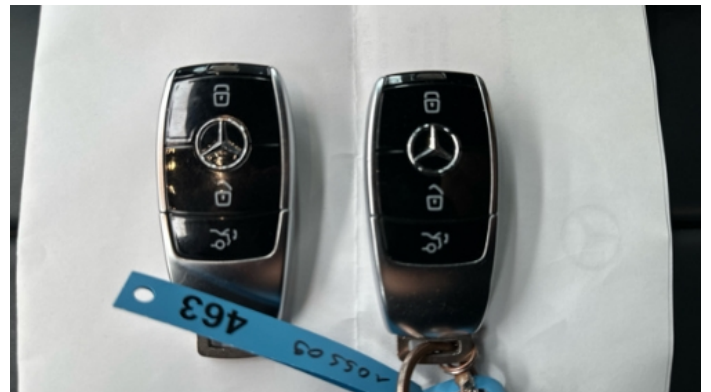
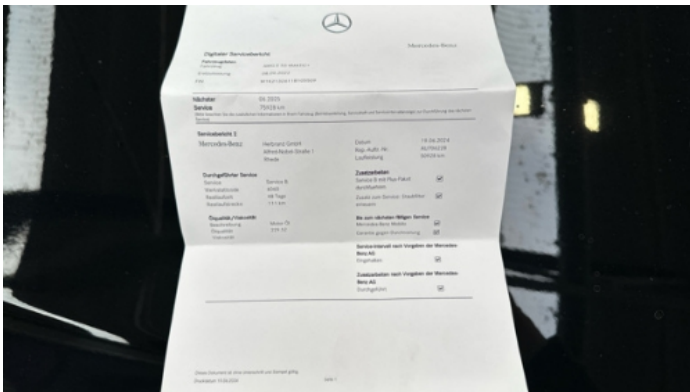
Service Book Available	Computer Print Out Available	Next Service Mileage	km
Previous Usage		Imported	No
Manufacturer Warrenty			











Equipment

Trafficsignrecognition	Adaptivecruisecontrol	Alloys wheels	Anti-lock braking
Bluetooth telephone interface	Cruise control	Digitaldashboard	Fatiguewarningsystem
Remote adjusting wing mirrors	Reversing Camera	Satellite navigation	Electrically adjustable seats
Electrictailgate	Laneassist	LED Headlamps	Rear parking sensors
USB Socket	Airbag Status	Ambientlighting	Blindspotassist
Cabin Pre Heating	Digital Radio	Enhanced speaker system	Front parking sensors
Remote central locking	Roof rails	Stability control	Electrically folding wing mirrors
Emergencybrakeassist	Leather steering wheel	Radio	

Equipment Details

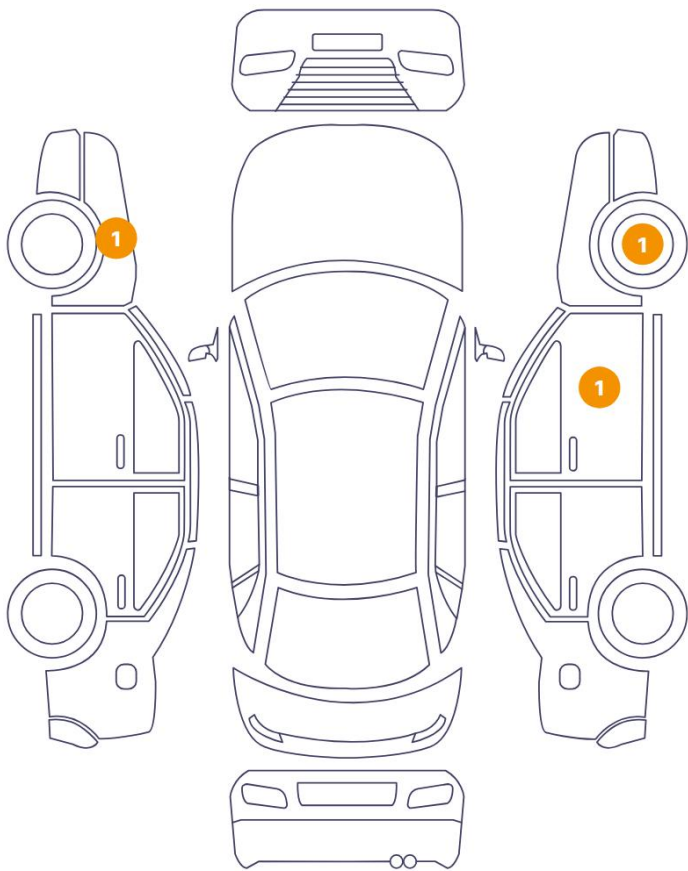
Air Conditioning	Three Zone Climate Control	Alloy Wheel Size	20
Enhanced Speaker System	Burmester	Seat Heating	Front

Wheels & Tyres

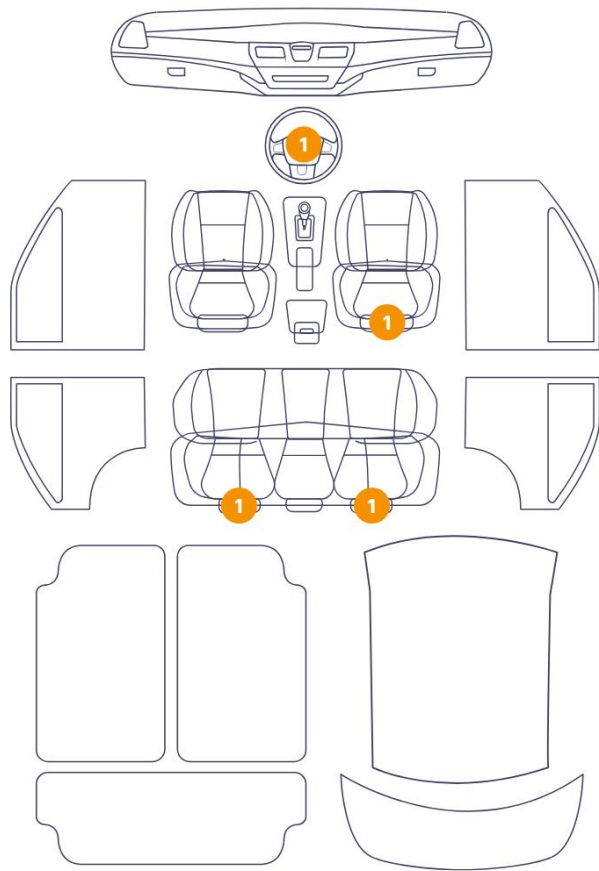
Right Front Tyre Depth	5	Left Front Tyre Depth	5
Right Rear Tyre Depth	5	Left Rear Tyre Depth	5

Cosmetic Damage

3 Schäden



4 Schäden



Component	Damage	Comments
1 Rim / Front Right	Out of Bodywork / Scratch	
2 Fender / Front Left	Paint / Scratch / Scuff	
3 Pillar / Front Right	Bodywork / Dent / Dent	
4 Seat / Front Right	Interior / Ripped	
5 Seat / Back Right	Interior / Broken	
6 Seat / Back Left	Interior / Broken	
7 Steering Wheel / Front	Interior / Scratched	

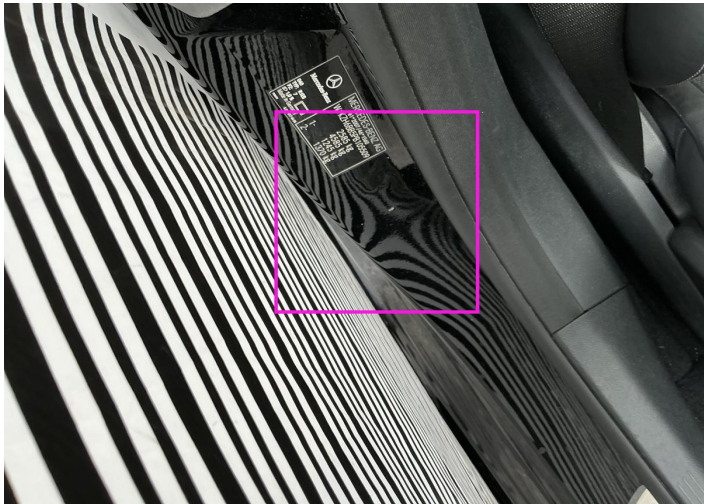




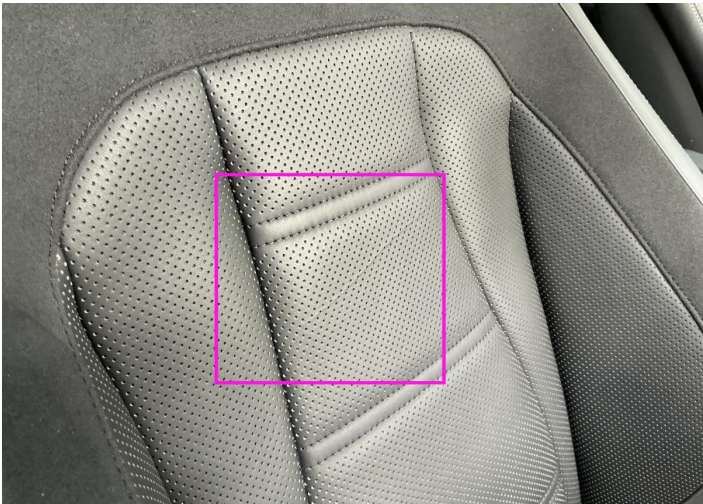
1. Rim / Front Right  
Out of Bodywork / Scratch -



2. Fender / Front Left  
Paint / Scratch / Scuff -



3. Pillar / Front Right  
Bodywork / Dent / Dent -



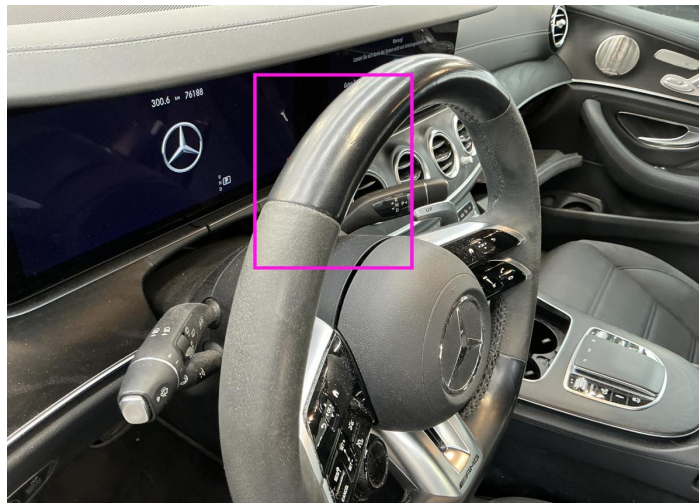
4. Seat / Front Right  
Interior / Ripped -



5. Seat / Back Right  
Interior / Broken -



6. Seat / Back Left  
Interior / Broken -



7. Steering Wheel / Front  
Interior / Scratched -



## Mechanical Condition

### Control Lights

Display Defect	✓	Service Light	✓
ABS Warning Light	✓	ESP Fault/Traction Control Malfunction Light	✓
Airbag Warning Light	✓	Oil Pressure Warning Light	✓
Brake Warning Light	✓	Power Steering Warning Light	✓
Alternator / Battery	✓	All - wheel Drive	✓
No Dashboard Lights	✓	Tire Pressure Monitoring System	✓

### Equipments Test

Main & Spare Keys Functioning	✓	Electric Windows	✓
Navigation System	✓	Audio Equipment	✓
Parking Sensors / Cameras Functioning	✓	AC / Heating System	✓

### Engine

Engine Status / EML	✓	Engine Leak Visible	✓
Engine Starts	✓		

### Gearbox

Gear Box	✓
----------	---

### Levels

Brakes Fluid	NA	Coolant Fluid	✓
--------------	----	---------------	---

Test Drive Inspection

Steering Wheel			
Steering   Noise / Anomaly		✓	
Engine			
Engine Noise	✓	The Gears Scratch / Skip / Abnormal Operation	✓
Fume Quantity	✓	Power Loss	✓
Brake			
Brake System Anomaly		✓	
General			
Test Driven Status		✓	
✓ No troubles detected, good condition or correct tests, according to vehicle age and mileage			
! Damages or malfunction detected that requires repairs by the buyer			
NA Not applicable			
☐ Not tested			

Disclaimer

Please also note the "UserGuide condition report", which shows the scope of the vehicle description.

[User Guide](#)