



MERCEDES-BENZ E-Klasse
AMG E 53 T HYBRID 4Matic+ AMG
SPEEDSHIFT TCT 9G

VIN NO W1KLH6DB6SA043149
Registration Number B6SA043149



MOT Date	Number of Owners	Number of Keys	Odometer Reading
2027-07-01	1	1	5694 km
Last Service	Last Service Mileage	First Registration Date	Country First Registered
-	-	2024-07-03	Germany

Inspection Report Summary

Customer	BCA Online	Report Number	P20250825134117
Inspection Date / Place	2025-08-25 / BCA Neuss	Cosmetic Grade	5

Vehicle Summary

Vehicle Condition	Runner	VAT Type	Qualifying
Fuel Type	Plug - in Hybrid Electric Vehicle Petrol	Road Worthy	No
Colour	Black	Engine Size (cc)	2999
Engine Size	3.0	No of Doors	5
Body Type	Stationwagon / Estate	Drive Train	All-Wheel-Drive permanent
Seat Colour		No of Seats	5
Seat Covering Name	Schwarz	Seat Covering	Leather
Charging Cables	OUC + Type 2	WLTP CO2 Emissions	
Gearbox Type	Automatic		

Vehicle History & Documents

Service Book Available	Missing	Next Service Mileage	km
Previous Usage		Imported	No
Manufacturer Warrenty			









Equipment

Tinted Glass	360°camera	Alloys wheels	Anti-lock braking
Cruise control	Digitaldashboard	Front parking sensors	Remote adjusting wing mirrors
Reversing Camera	Stability control	Electrically folding wing mirrors	Leather steering wheel
Radio	Tow ball	Airbag Status	Ambientlighting
Bluetooth telephone interface	Digital Radio	Enhanced speaker system	Head up Display
Remote central locking	Satellite navigation	Sunroof	Electrictailgate
LED Headlamps	Rear parking sensors		

Equipment Details

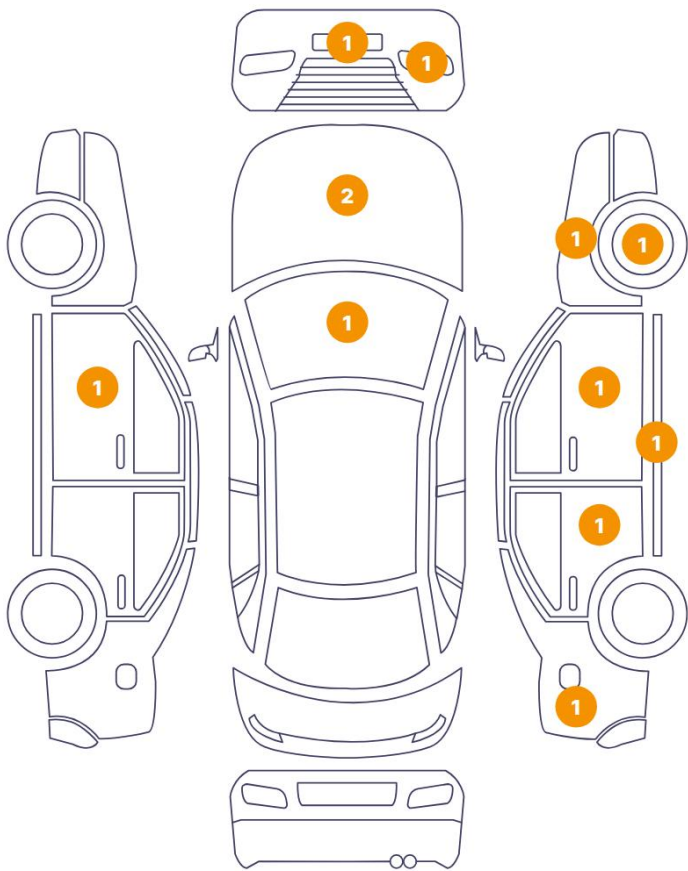
Tow Ball Type	Electronic	Air Conditioning	Four Zone Climate Control
Alloy Wheel Size	21	Seat Heating	Front and Rear
Sunroof Type	Opening Panoramic		

Wheels & Tyres

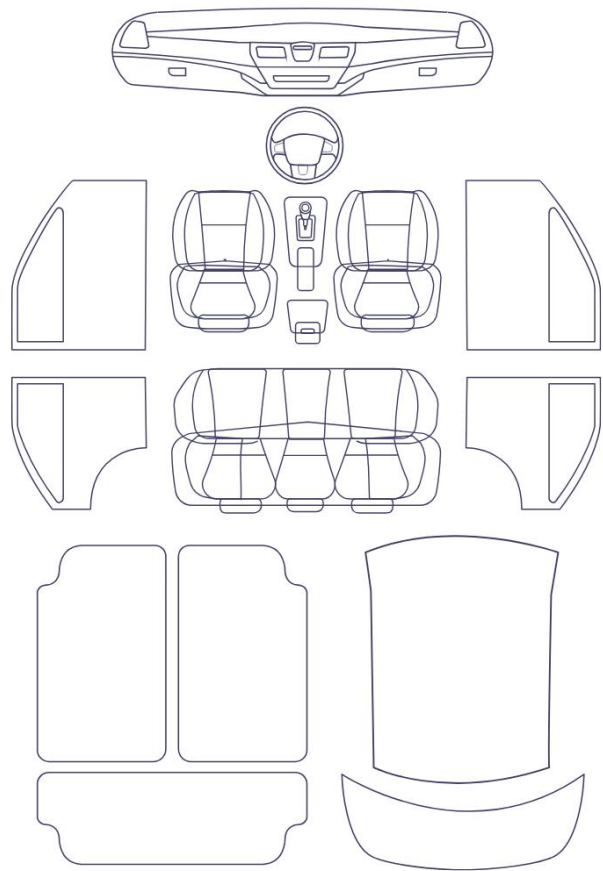
Right Front Tyre Depth	7	Left Front Tyre Depth	7
Right Rear Tyre Depth	7	Left Rear Tyre Depth	7

Cosmetic Damage

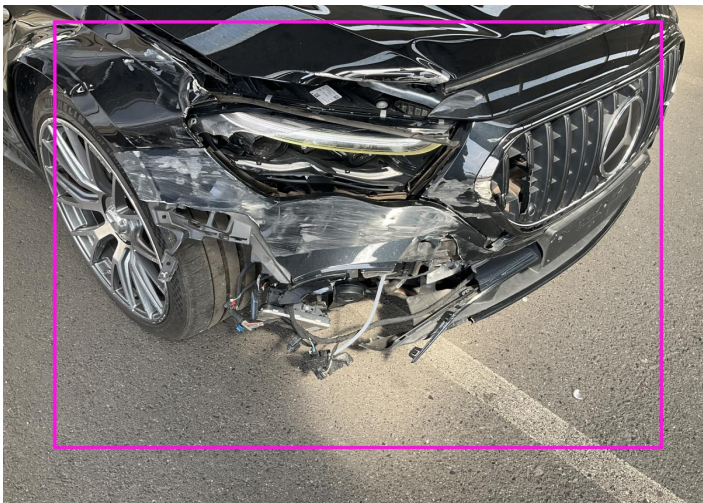
12 Schäden



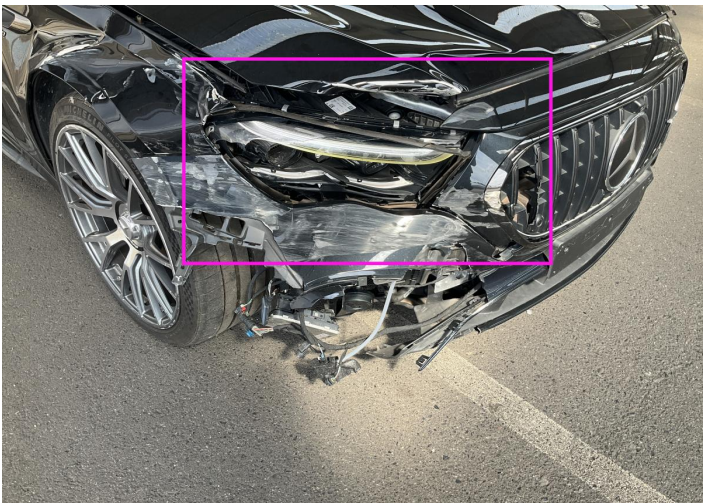
0 Schäden



Component		Damage	Comments
1	Bumper / Front	Bodywork / Breakage / Crack	
2	Front Light / Front Right	Glass Break	
3	Hood	Bodywork / Dent / Deformation	
4	Hood	Bodywork / Dent / Dent	
5	Fender / Front Right	Bodywork / Breakage / Crack	
6	Rim / Front Right	Out of Bodywork / Scratch	
7	Door / Front Left	Paint / Scratch / Scuff	
8	Side Panel / Back Right	Paint / Scratch / Scuff	
9	Door / Back Right	Paint / Scratch / Scuff	
10	Rocker Panel / Center Right	Paint / Scratch / Scuff	
11	Door / Front Right	Paint / Scratch / Scuff	
12	Windshield / Front	Glass Break / Impact	



1. Bumper / Front
Bodywork / Breakage / Crack -



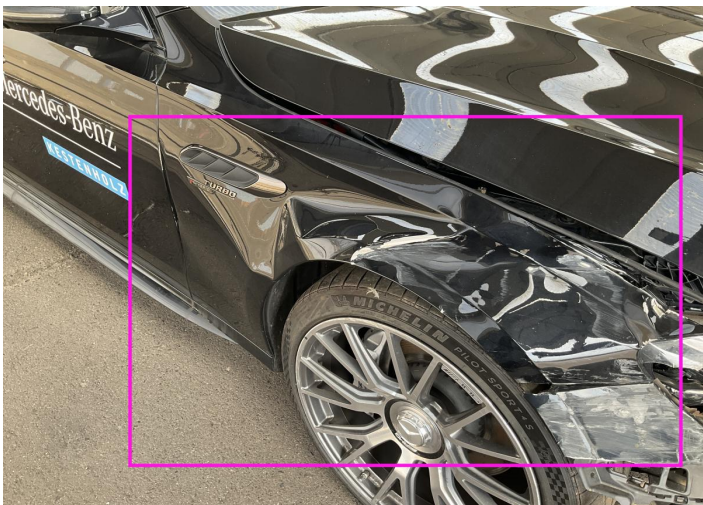
2. Front Light / Front Right
Glass Break -



3. Hood
Bodywork / Dent / Deformation -



4. Hood
Bodywork / Dent / Dent -



5. Fender / Front Right
Bodywork / Breakage / Crack -



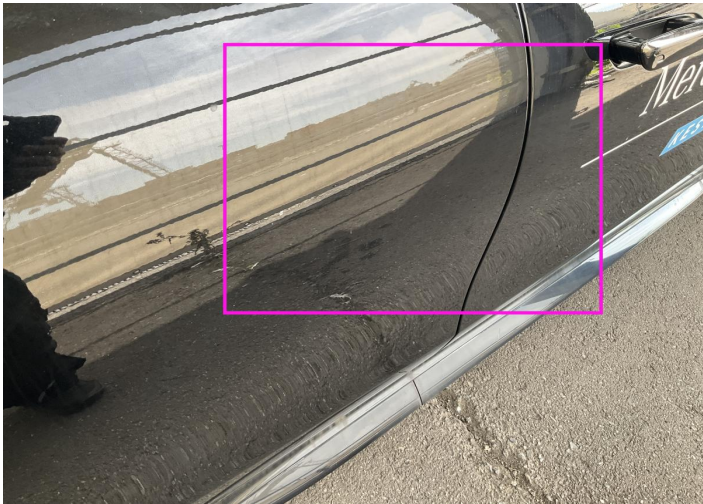
6. Rim / Front Right
Out of Bodywork / Scratch -



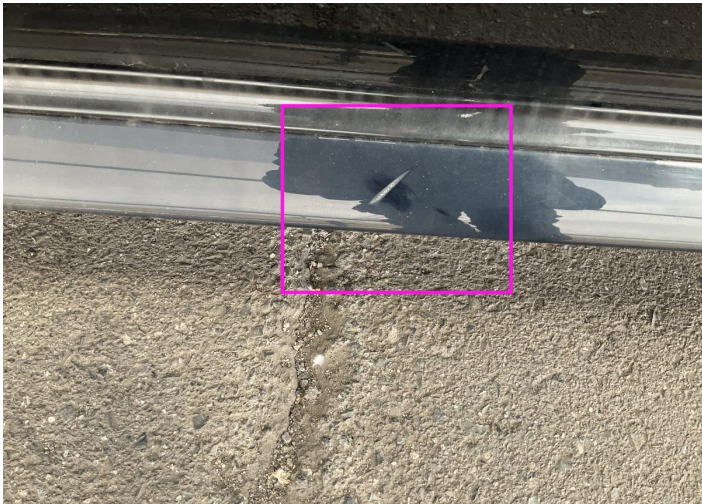
7. Door / Front Left
Paint / Scratch / Scuff -



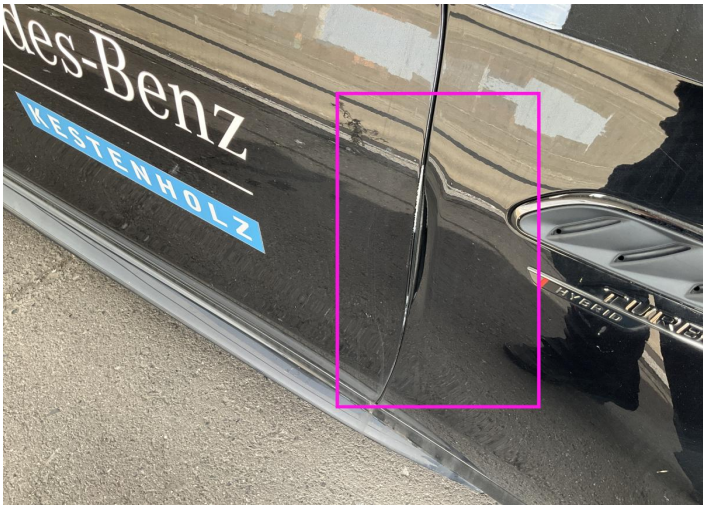
8. Side Panel / Back Right
Paint / Scratch / Scuff -



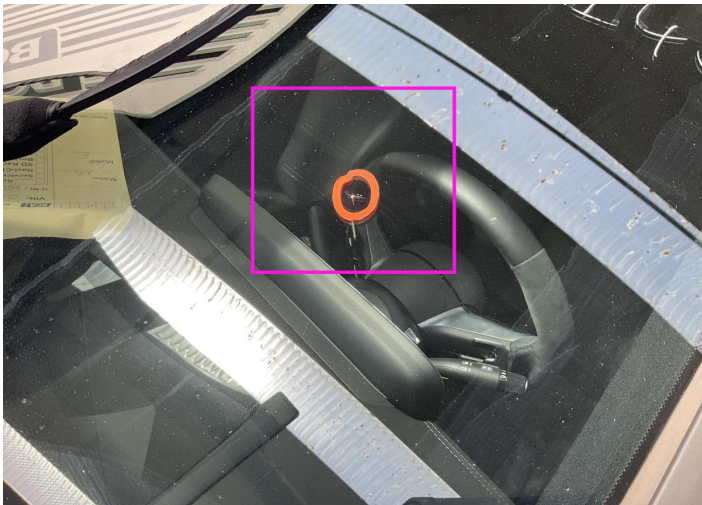
9. Door / Back Right
Paint / Scratch / Scuff -



10. Rocker Panel / Center Right
Paint / Scratch / Scuff -



11. Door / Front Right
Paint / Scratch / Scuff -



12. Windshield / Front
Glass Break / Impact -

Mechanical Condition

Control Lights

Display Defect	✓	Service Light	✓
ABS Warning Light	✓	ESP Fault/Traction Control Malfunction Light	✓
Airbag Warning Light	✓	Oil Pressure Warning Light	✓
Brake Warning Light	✓	Power Steering Warning Light	✓
Alternator / Battery	!	All - wheel Drive	✓
No Dashboard Lights	✓	Tire Pressure Monitoring System	✓

Equipments Test

Central Locking	✓	Main & Spare Keys Functioning	✓
Electric Windows	✓	Navigation System	✓
Audio Equipment	✓	AC / Heating System	✓
Parking Sensors / Cameras Functioning	!	Other Equipments	✓

Engine

Engine Status / EML	!	Engine Leak Visible	✓
Engine Starts	✓		

Gearbox

Gear Box	✓
----------	---

Hybrid/EV

Charge Lead Condition	✓	Charge Port Condition	✓
-----------------------	---	-----------------------	---

Levels

Coolant Fluid	✓	Brakes Fluid	NA
---------------	---	--------------	----

Test Drive Inspection

Steering Wheel

Steering | Noise / Anomaly

Engine

Engine Noise The Gears Scratch / Skip / Abnormal Operation

Fume Quantity Power Loss

Brake

Brake System Anomaly

General

Test Driven Status

Gearbox

Automatic Shift

No troubles detected, good condition or correct tests, according to vehicle age and mileage

Damages or malfunction detected that requires repairs by the buyer

Not applicable

Not tested

Disclaimer

Please also note the "UserGuide condition report", which shows the scope of the vehicle description. [User Guide](#)