



MERCEDES-BENZ E-Klasse

E 220 d 9G-TRONIC

VIN NO W1KLF0EB9SA124552
Registration Number B9SA124552



MOT Date	Number of Owners	Number of Keys	Odometer Reading
-	1	2	16423 km
Last Service	Last Service Mileage	First Registration Date	Country First Registered
-	-	2024-11-14	-

Inspection Report Summary

Customer	BCA Online	Report Number	P20250917132653
Inspection Date / Place	2025-09-17 / Horst Mosolf GmbH & Co. KG Ketzin	Cosmetic Grade	3

Vehicle Summary

Vehicle Condition	Runner	VAT Type	Qualifying
Fuel Type	Diesel	Road Worthy	Unknown
Colour	White	Engine Size (cc)	1993
Engine Size	2.0	No of Doors	4
Body Type	Sedan	Drive Train	Rear
Seat Colour		No of Seats	5
Seat Covering Name	ARTICO / Tomasi schwarz	Seat Covering	Cloth/Synthetic Leather
Charging Cables		WLTP CO2 Emissions	
Gearbox Type	Automatic		

Vehicle History & Documents

Service Book Available	Missing	Next Service Mileage	km
Previous Usage	Rental Car	Imported	No
Manufacturer Warrenty			







Equipment

USB Socket	Alloys wheels	Cruise control	Enhanced speaker system
Parking Assistance	Reversing Camera	Split folding rear seats	Central locking
Leather steering wheel	Radio	Airbag Status	Anti-lock braking
Digital dashboard	Front parking sensors	Remote adjusting wing mirrors	Satellite navigation
Stability control	Electrically folding wing mirrors	LED Headlamps	Rear parking sensors

Equipment Details

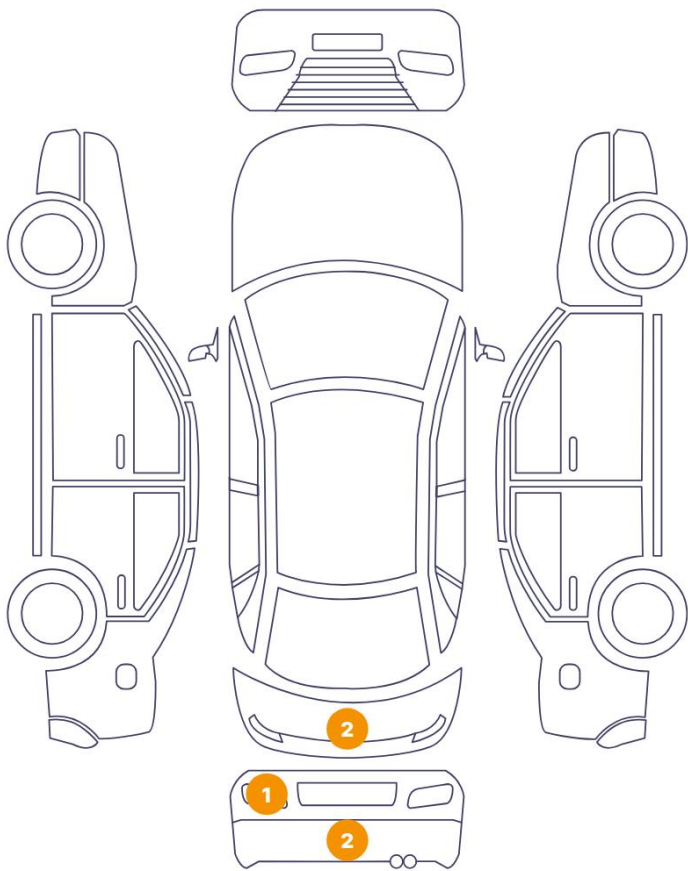
Air Conditioning	Climate Control	Alloy Wheel Size	19
Seat Heating	Front		

Wheels & Tyres

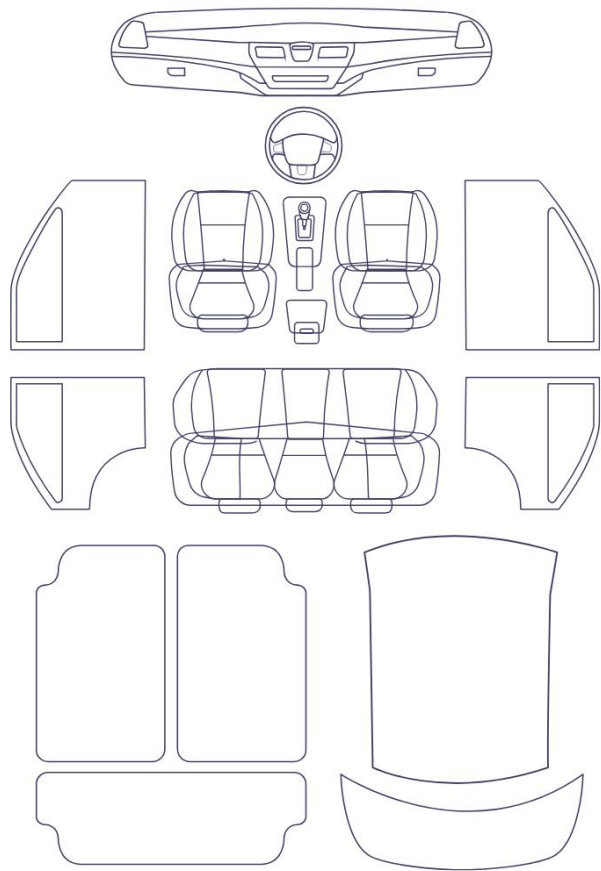
Right Front Tyre Depth	4	Left Front Tyre Depth	5
Right Rear Tyre Depth	5	Left Rear Tyre Depth	5

Cosmetic Damage

5 Schäden



0 Schäden



Component		Damage	Comments
1	Bumper / Back	Bodywork / Dent / Dent	
2	Bumper / Back	Bodywork / Dent / Dent	
3	Back Light / Left	Glass Break	
4	Tailgate	Bodywork / Dent / Dent	
5	Tailgate	Bodywork / Dent / Dent	



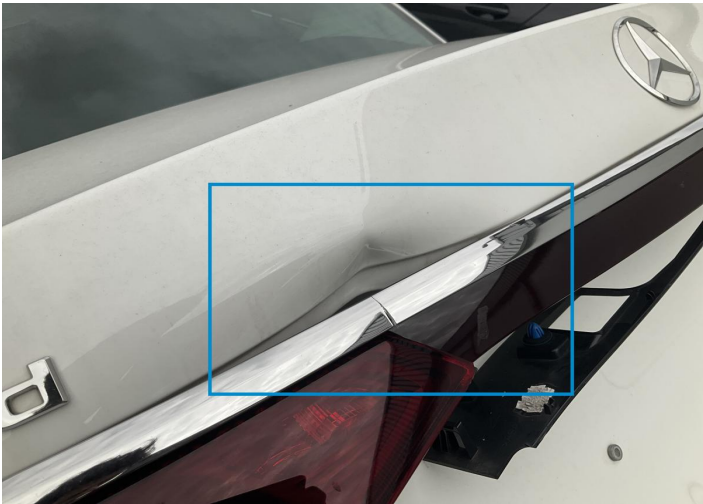
1. Bumper / Back
Bodywork / Dent / Dent -



2. Bumper / Back
Bodywork / Dent / Dent -



3. Back Light / Left
Glass Break -



4. Tailgate
Bodywork / Dent / Dent -



5. Tailgate
Bodywork / Dent / Dent -

Mechanical Condition

Control Lights

Display Defect	✓	Service Light	✓
ABS Warning Light	✓	ESP Fault/Traction Control Malfunction Light	✓
Airbag Warning Light	✓	Oil Pressure Warning Light	✓
Brake Warning Light	✓	Power Steering Warning Light	✓
Alternator / Battery	✓	All - wheel Drive	✓
No Dashboard Lights	✓	Tire Pressure Monitoring System	✓

Engine

Engine Starts	✓	Engine Status / EML	✓
Engine Leak Visible	✓		

Hybrid/EV

Hybrid System Fault	✓
---------------------	---

Equipments Test

Central Locking	✓	Electric Windows	✓
Navigation System	✓	Audio Equipment	✓
Parking Sensors / Cameras Functioning	✓	AC / Heating System	✓

Gearbox

Gear Box	✓
----------	---

Levels

Brakes Fluid	✓	Coolant Fluid	✓
--------------	---	---------------	---

Test Drive Inspection

Steering Wheel

Steering | Noise / Anomaly

Engine

Engine Noise The Gears Scratch / Skip / Abnormal Operation

Fume Quantity Power Loss

Clutch

Clutch Functioning

Brake

Brake System Anomaly

General

Test Driven Status

- No troubles detected, good condition or correct tests, according to vehicle age and mileage
- Damages or malfunction detected that requires repairs by the buyer
- Not applicable
- Not tested

Disclaimer

Please also note the "UserGuide condition report", which shows the scope of the vehicle description. [User Guide](#)