



Expertise

Protocol number: 41345449  
Order No. / Reference: 25120123  
Inspection date: 2 Sept 2025

Manufacturer: Mercedes-Benz	Model: C 300 e T 9G-TRONIC AMG Line
VIN: W1KAH5EB8PF123160	



Vehicle details	
Manufacturer / Type / Model / Equipment	
Mercedes-Benz C 300 e T 9G-TRONIC AMG Line	
Vehicle Identification number	W1KAH5EB8PF123160
Mileage (Read)	62,934 km
First registration	13 Jul 2023
Number of holders	1
Power / Engine displacement	150 kw / 1,999 ccm
Fuel type / Cylinder	Hybr.B/E ext. edition / 4
Gearbox / Number of gears	Automatic / 9
Type of drive	Rear drive
Type of vehicle	Station wagon
Colour / colour code	Spektralblau Metallic
Doors / Seats	5 / 5
Upholstery type	Alcantara / Leather
Colour of upholstery	Black-Anthracite



## Vehicle details

<b>Maintenance booklet / proof</b>	digital proof / complete	<b>Next maintenance in</b>	250 Tag(e)
<b>Last maintenance on / at</b>	04/2025 at 52,438 km		
<b>Key is / should be</b>	2 / 2	<b>FZG documents</b>	ZB#2 (B) was available (copy), ZB#1 (S) was not available
		<b>Letter No.</b>	GV709209
<b>Previous damage / Accident</b>	Detectable	<b>Repainting</b>	None detectable
<b>Inspection conditions</b>	sufficient	<b>Lifting equipment / pit</b>	yes
<b>Test drive</b>	Not performed	<b>Engine function test</b>	Performed
<b>Manufacturer key number/ type code number</b>	2222 / BEP 00067		
<b>Emission standard</b>	EURO6;WLTP;AP;PI/CI; M, N1 I	<b>Fine dust sticker</b>	
<b>Permitted total weight</b>	2,655 kg	<b>Empty weight</b>	

## Tyres

### Mounted tyres

#	Tyre size	Type of tyre	Manufacturer	Tread depth
1)	225/45 R18 95Y	Summer tyres on Light alloy	Continental	5mm / 5mm
2)	255/40 R18 99Y	Summer tyres on Light alloy	Continental	5mm / 5mm

**Legend:** Tread depth information for tires on the left is in the first place, for tires on the right is in the second place on the axle in the direction of travel



## Equipment

### Standard equipment

- |   |  |
|---|--|
| <ul style="list-style-type: none"> <li>• Airbag for driver and front passenger</li> <li>• Airbag: Center airbag</li> <li>• Airbag: Windowbag for driver and front passenger</li> <li>• Ambient lighting with 64 light colors</li> <li>• AMG sports pedal system made of brushed stainless steel with rubber studs</li> <li>• Basic services</li> <li>• Roof rails black</li> <li>• DYNAMIC SELECT</li> <li>• ECO start-stop function</li> <li>• 4-way electric window lifter</li> <li>• Transmission: Automatic 9-speed, 9G-TRONIC</li> <li>• Heated rear window</li> <li>• Instrument panel and beltlines in ARTICO man-made leather in black nappa look</li> <li>• Mechanical child safety lock for the rear doors</li> <li>• Rear headrests (3)</li> <li>• Charging cable for household socket, 5m, smooth</li> <li>• Charging system: Alternating current charging system (AC charging) 11kW</li> <li>• Mercedes-Benz emergency call system</li> <li>• Center console in high-gloss black</li> <li>• Package: Storage</li> <li>• Package: Park</li> <li>• Radio: Advanced functions MBUX</li> <li>• Radio: MBUX</li> <li>• Radio accessories: Communication module (LTE) for the use of Mercedes me connect services</li> <li>• Remote Services Plus</li> <li>• Windscreen wipers with rain sensor</li> <li>• Seats: Folding seat backrests in the rear</li> <li>• Cruise control</li> <li>• Electronic immobilizer</li> <li>• Decorative elements metal structure</li> </ul> | <ul style="list-style-type: none"> <li>• Airbag: Automatic passenger airbag deactivation</li> <li>• Airbag: Sidebag for driver and front passenger</li> <li>• Acoustic environmental protection</li> <li>• AMG floor mats</li> <li>• Exterior mirrors left and right heated and electrically adjustable</li> <li>• Brake assist, active</li> <li>• Double cup holders at the front</li> <li>• EASY-PACK tailgate</li> <li>• Electronic Stability Program (ESP)</li> <li>• Speed Limit Assistant</li> <li>• Rear window wiper</li> <li>• Interior headliner fabric crystal grey</li> <li>• ISOFIX child seat attachment with Top Tether in the rear</li> <li>• KEYLESS-GO start function</li> <li>• THERMATIC automatic climate control with 2 climate zones</li> <li>• Front headrests</li> <li>• Load compartment cover including EASY-PACK safety net</li> <li>• LED high-performance headlights</li> <li>• Steering wheel: Multifunction sports steering wheel in nappa leather</li> <li>• Gasoline particulate filter</li> <li>• Package: Interior lighting package</li> <li>• Upholstery: ARTICO man-made leather/MICROCUT microfiber</li> <li>• Radio accessories: Digital radio (DAB)</li> <li>• Radio accessories: Central display</li> <li>• Tire pressure monitoring (TPMS)</li> <li>• Wheels: 45.7 cm (18") AMG light-alloy wheels in 5-spoke design</li> <li>• Lane Keeping Assist, active</li> <li>• High-visibility vest for drivers</li> <li>• Central locking with remote control</li> </ul> |
|---|--|

### Extra equipment

- |  |   |
|--|---|
| <ul style="list-style-type: none"> <li>• Trailer hitch with ESP trailer stabilization</li> <li>• Reduced price module</li> <li>• Package: Advanced Comfort Package (Seat heating for driver and front passenger - Seat Comfort Package: -Various electric and manual adjustment options for the front seats to adapt to the specific body and comfort requirements of the driver and front passenger - Electro-pneumatic 4-way lumbar support and lateral support adjustment with seat controls -Electric seat cushion tilt adjustment - Electric height adjustment -Electric backrest adjustment -Electric seat cushion depth adjustment -Mechanical fore/aft adjustment - Mechanical headrest adjustment)</li> </ul> | <ul style="list-style-type: none"> <li>• Paint finish: metallic</li> <li>• Center console metal structure</li> <li>• Package: Advanced Parking Package (12 ultrasonic sensors - 360° camera - Active Parking Assist with PARKTRONIC: detects free parking spaces, assisted parking, visual and acoustic warnings, display of camera and ultrasonic data on the media display - Cross-traffic warning: can provide a visual and acoustic warning when cross-traffic is detected while reversing out of a parking space and, if necessary, automatically initiate emergency braking - Reverse maneuvering braking: can trigger a braking action - Drive-away assistance)</li> </ul> |
|--|---|



- Package: Infotainment package (MBUX Navigation Premium (hard drive navigation, pre-installation for Live Traffic Information), Traffic Sign Assistant, Smartphone Integration (connects the mobile phone wirelessly to the multimedia system via Apple CarPlay and Android Auto), Wireless charging system for mobile devices in the front)
- Package: Mirror package (both exterior mirrors electrically foldable (button in the driver's door control panel) - interior mirror and exterior mirror on the driver's side automatically dimmable - ambient lighting of the exterior mirror to illuminate the entry area with projection of the Mercedes-Benz logo)
- Phone accessories: Wireless charging system for mobile devices
- Package: Driver Assistance (Active Distance Assist, DISTRONIC, Active Speed Limit Assist, Advanced Auto Restart on Motorways, Route-Based Speed Adaptation with End-of-Traffic Jam Assist, Active Traffic Jam Assist, Active Steering Assist, Active Lane Change Assist, Active Emergency Stop Assist, Emergency Lane Function, Active Brake Assist with Vehicle, Bicycle, and Pedestrian Detection; Intersection Function, Turning Function, End-of-Traffic Jam Emergency Braking Function, Evasive Steering Assist, Active Lane Keeping Assist, Active Blind Spot Assist, Exit Warning Function)
- Sunroof: Electric panoramic sunroof
- Seats: Sports seats
- Heat and noise-insulating acoustic glass (for windshield and front doors)

## Brief expert findings

Documents submitted	At the time of the inspection, the registration certificate Part 2 (letter) was available, but the registration certificate Part 1 (certificate) was not. (Copy)
VIN comparison	The vehicle identification number (VIN) was read from the vehicle and its conformity with the submitted documents was verified during the inspection by the undersigned.
Inspection	The inspection conditions were sufficient for the assessment of the vehicle. Lifting equipment and a pit were available for examining the vehicle.
Test drive	No test drive/maneuvering was carried out during the inspection of the vehicle.
Engine function test	An engine test run was performed.

## Value reducing factors

No.	Component group	Description
1	Boot lid / rear door	Boot lid - Glued / labelled - De-glue / neutralise
2	Bonnet	Bonnet - dent(s) - Smart repair
3	Door - front left side	Door - Scratch(es) - Smart repair
4	Side panel - rear left side	Side panel - dent(s) - Smart repair
5	Boot lid / rear door	Boot lid - dent(s) - Smart repair
6	Trim / covers	Brightware / decorative strip (Chromeleiste) - Scratched - Replace
7	Wheel / tyres	Alloy rim - rear left side - Scratched - Loss in value
8	Side panel - rear right side	Sill - Dent / paintcoat damage - Repair and paint
9	Rear bumper	Rear bumper - Scratch(es) - Repair and paint
10	Front bumper	Front bumper - Scratch(es) - Repair and paint
11	Wheel / tyres	Alloy rim - front right side (Materialabtrag) - Scratched - Replace
12	Wheel / tyres	Alloy rim - rear right side - Scratched - Replace

## Wear and tear

No.	Component group	Description
1	Sill - right side	Trim - Scratch(es) - No deduction

The vehicle shows signs of wear commensurate with its age and use.

## Missing parts

### Description

Equipment - Charging cable (Ladekabel für Haushaltssteckdose)



## Previous damages

No.	Previous damage	Extent of damage (Net)
1	Side - left, Side right, Provided by user / customer, from 18 Jun 2025	2.772,59 €

## Order/Scope of order

The order was placed to prepare a sales report for the vehicle described. This includes the following:

- Description of core relevant information about the vehicle
- Documentation of equipment features  
(*Delivery by third-party service providers*)
- Documentation of damage, defects, missing parts
- Documentation of previous damage, unrepaired previous damage, repainting
- a brief visual or functional inspection of the equipment details if possible.  
(*Functional tests of driver assistance systems are not included in the scope of services!*)
- a photo documentation of the vehicle

## Basis for the order

This product is based on the Alphabet Fuhrpark GmbH guidelines for vehicle returns and valuations. The expert makes the explicit findings in each individual case objectively within the framework of the specified standards based on his or her own expertise.

The vehicle inspection takes place in a disassembled state.

Damage or defects that can only be detected during disassembly/diagnosis work or through advanced knowledge remain within the scope of the prognosis risk. An extended risk exists for concealed defects caused by fraudulent deception and not identifiable by the expert.

Damage or defects resulting from normal use or wear and tear of the vehicle will be accepted according to the applicable standard.

There was no explicit identification or monetary consideration of the expected features within the product.

Features which in their nature and severity slightly exceed normal use but do not constitute unacceptable damage will be documented and identified under signs of use if necessary.

Damage or defects which, according to the underlying standard, can no longer be attributed to normal use or wear and tear are listed in the product under "Depreciating Factors".

Depending on the product specification, a monetary ID can be provided. If this takes place, the costs can be 100% d or pro rata depending on the vehicle's age and mileage.

## Previous damages

According to available information previous damages were repaired at the vehicle. Traces of repairs, which allow conclusions about the area of repair, were not recognizable during the inspection.





Figure 1: Diagonal front (left)



Figure 2: Diagonal front (right)



Figure 3: Diagonal rear (left)



Figure 4: Diagonal rear (right)



Figure 5: Interior - front



Figure 6: Interior - rear





Figure 7: Instrument cluster



Figure 8: Instrument panel



Figure 9: interior 360° view



Figure 10: Cargo area



Figure 11: VIN



Figure 12: Mounted tyres





Figure 13: Documents

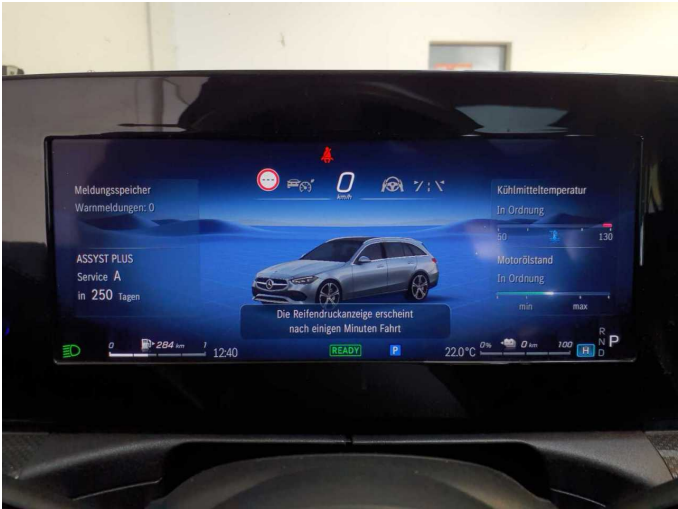


Figure 14: Documents



Figure 15: Navigation



Figure 16: Misc.



Figure 17: Misc.



Figure 18: Misc.





Figure 19: Misc.



Figure 20: Misc.



Figure 21: Misc.



Figure 22: Misc.

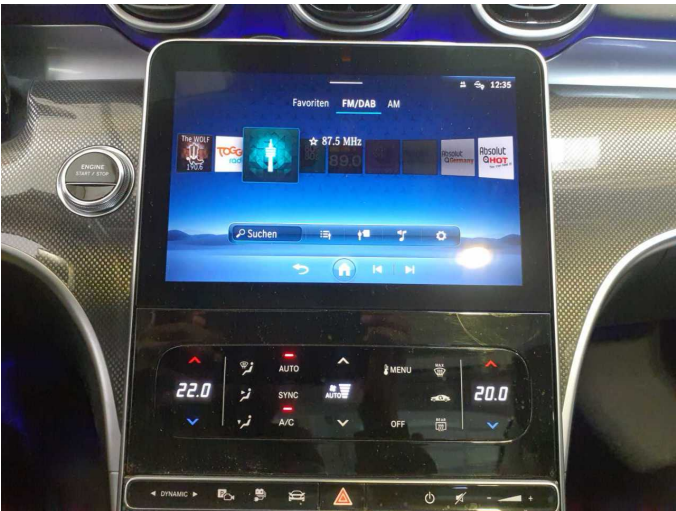


Figure 23: Misc.

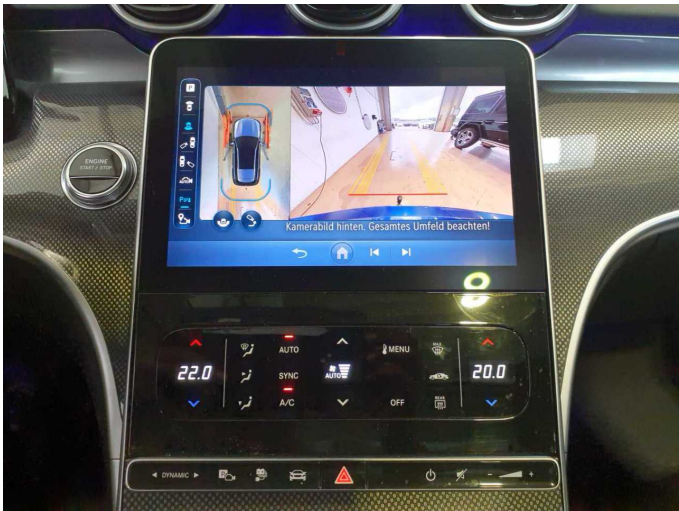


Figure 24: Misc.





Figure 25: Misc.

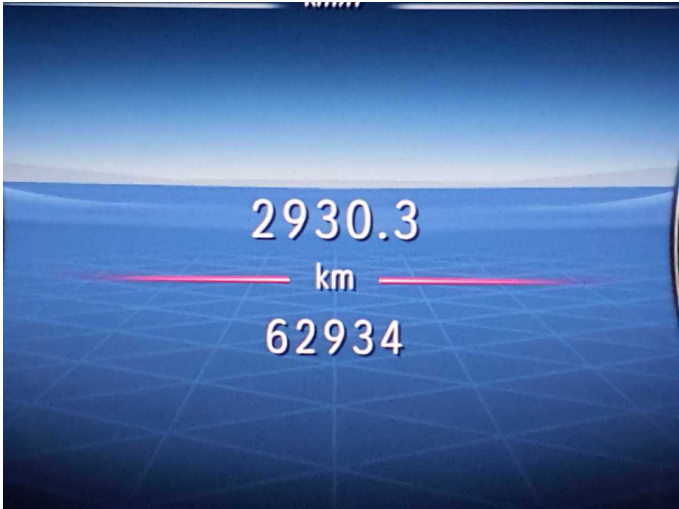


Figure 26: Misc.



Figure 27: Misc.



Figure 28: Misc.



Figure 29: Misc.



Figure 30: Misc.





Figure 31: Misc.



Figure 32: Misc.



Figure 33: Misc.



Damage 1: Boot lid / rear door: Boot lid - Glued / labelled - De-glue / neutralise

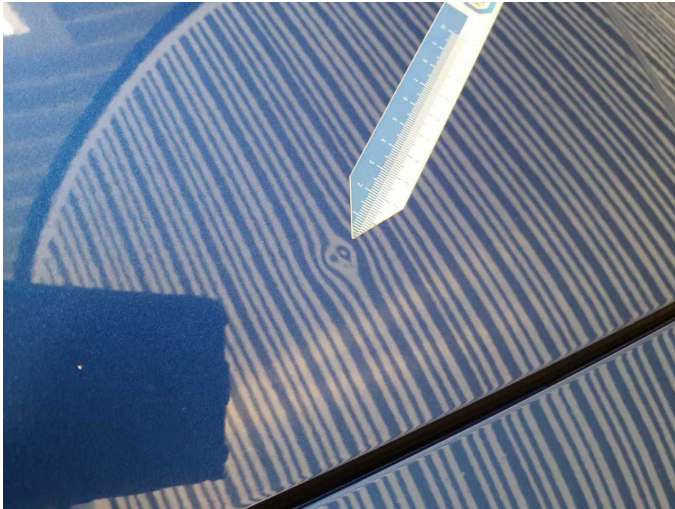


Damage 1: Boot lid / rear door: Boot lid - Glued / labelled - De-glue / neutralise



Damage 2: Bonnet: Bonnet - dent(s) - Smart repair





**Damage 2:** Bonnet: Bonnet - dent(s) - Smart repair



**Damage 3:** Door - front left side: Door - Scratch(es) - Smart repair



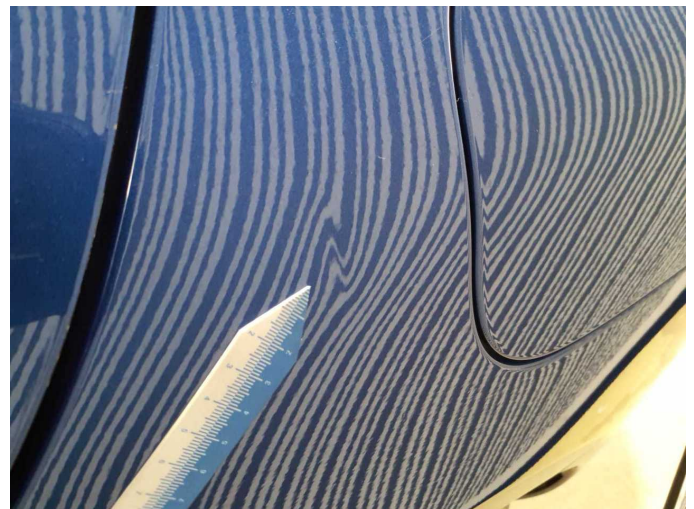
**Damage 3:** Door - front left side: Door - Scratch(es) - Smart repair



**Damage 3:** Door - front left side: Door - Scratch(es) - Smart repair



**Damage 4:** Side panel - rear left side: Side panel - dent(s) - Smart repair



**Damage 4:** Side panel - rear left side: Side panel - dent(s) - Smart repair





**Damage 5:** Boot lid / rear door: Boot lid - dent(s) - Smart repair



**Damage 5:** Boot lid / rear door: Boot lid - dent(s) - Smart repair



**Damage 5:** Boot lid / rear door: Boot lid - dent(s) - Smart repair



**Damage 6:** Trim / covers: Brightware / decorative strip (Chromeleiste) - Scratched - Replace



**Damage 6:** Trim / covers: Brightware / decorative strip (Chromeleiste) - Scratched - Replace

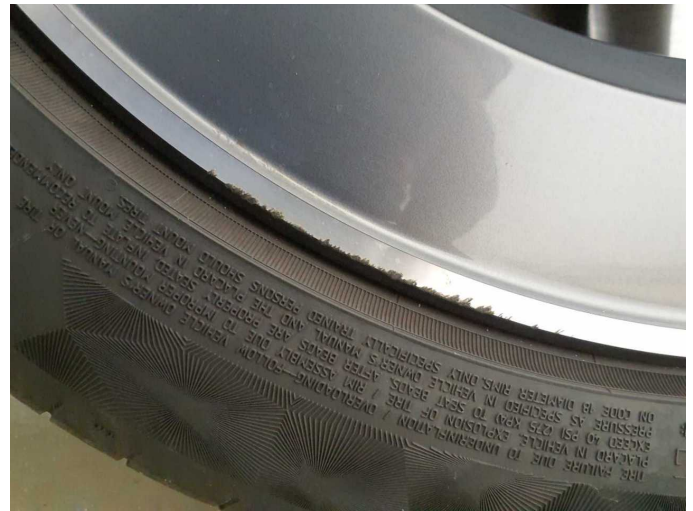


**Damage 7:** Wheel / tyres: Alloy rim - rear left side - Scratched - Loss in value

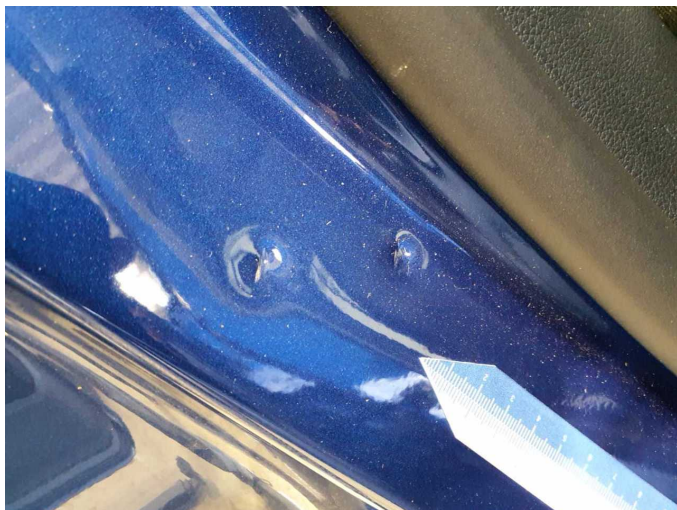




**Damage 7:** Wheel / tyres: Alloy rim - rear left side - Scratched - Loss in value



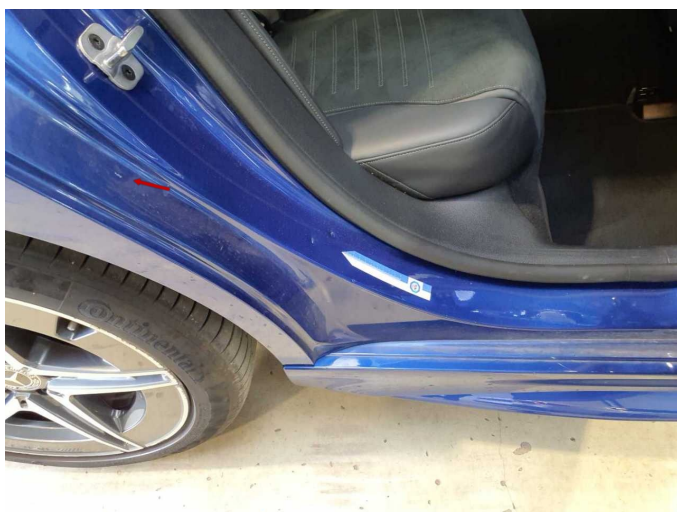
**Damage 7:** Wheel / tyres: Alloy rim - rear left side - Scratched - Loss in value



**Damage 8:** Side panel - rear right side: Sill - Dent / paintcoat damage - Repair and paint



**Damage 8:** Side panel - rear right side: Sill - Dent / paintcoat damage - Repair and paint



**Damage 8:** Side panel - rear right side: Sill - Dent / paintcoat damage - Repair and paint



**Damage 9:** Rear bumper: Rear bumper - Scratch(es) - Repair and paint





**Damage 9:** Rear bumper: Rear bumper - Scratch(es) - Repair and paint



**Damage 9:** Rear bumper: Rear bumper - Scratch(es) - Repair and paint



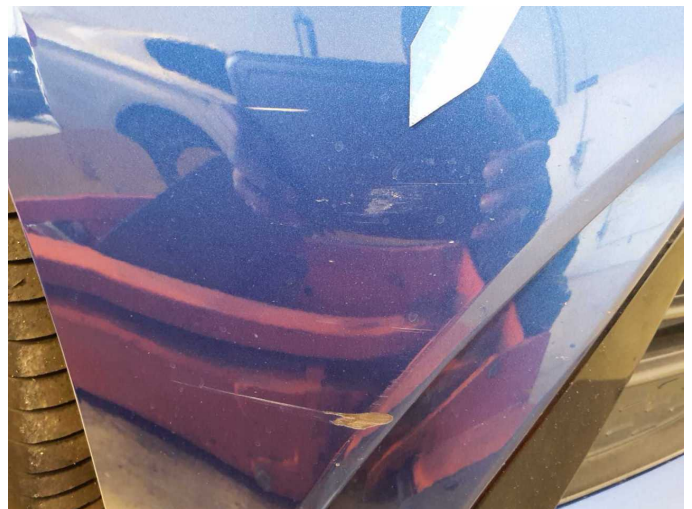
**Damage 9:** Rear bumper: Rear bumper - Scratch(es) - Repair and paint



**Damage 9:** Rear bumper: Rear bumper - Scratch(es) - Repair and paint

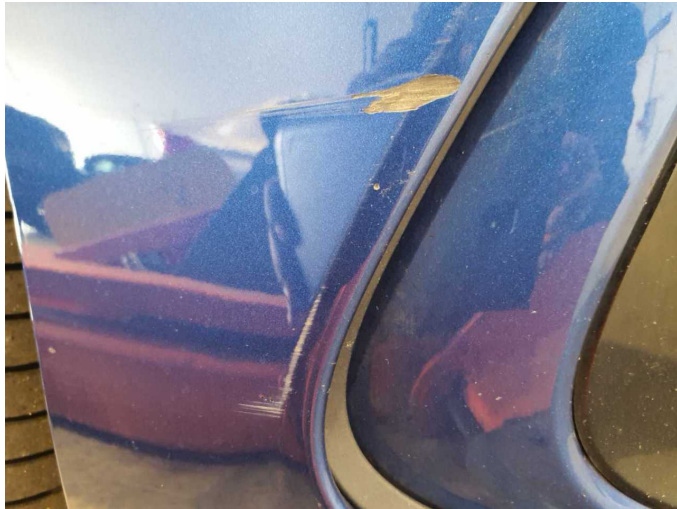


**Damage 10:** Front bumper: Front bumper - Scratch(es) - Repair and paint



**Damage 10:** Front bumper: Front bumper - Scratch(es) - Repair and paint





**Damage 10:** Front bumper: Front bumper - Scratch(es) - Repair and paint



**Damage 10:** Front bumper: Front bumper - Scratch(es) - Repair and paint



**Damage 11:** Wheel / tyres: Alloy rim - front right side (Materialabtrag) - Scratched - Replace



**Damage 11:** Wheel / tyres: Alloy rim - front right side (Materialabtrag) - Scratched - Replace



**Damage 11:** Wheel / tyres: Alloy rim - front right side (Materialabtrag) - Scratched - Replace



**Damage 11:** Wheel / tyres: Alloy rim - front right side (Materialabtrag) - Scratched - Replace

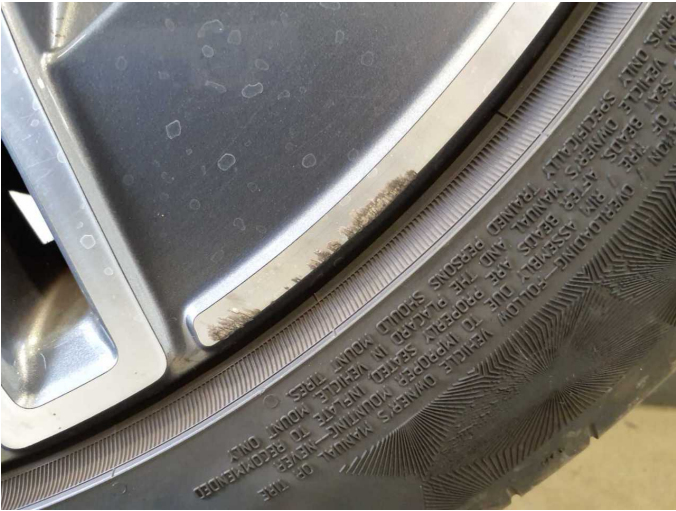




**Damage 12:** Wheel / tyres: Alloy rim - rear right side - Scratched - Replace



**Damage 12:** Wheel / tyres: Alloy rim - rear right side - Scratched - Replace



**Damage 12:** Wheel / tyres: Alloy rim - rear right side - Scratched - Replace



**Damage 12:** Wheel / tyres: Alloy rim - rear right side - Scratched - Replace



**Damage 12:** Wheel / tyres: Alloy rim - rear right side - Scratched - Replace



**Damage 12:** Wheel / tyres: Alloy rim - rear right side - Scratched - Replace





**Wear and tear 1:** Sill - right side: Trim - Scratch(es) - No deduction



**Wear and tear 1:** Sill - right side: Trim - Scratch(es) - No deduction



# Wartungshistorie

(gemäß Auftraggeber Informationen)

Fahrgestellnummer: W1KAH5EB8PF123160

Hersteller / Modell: MERCEDES-BENZ MB C 300 e T 9G-TRONIC AMG Line

Datum	KM-Stand	Beschreibung
01.04.2025	52.438	Regelwartungsdienst
04.07.2024	26.447	Regelwartungsdienst