



Expertise

Protocol number: 40950483
Order No. / Reference: 25043680
Inspection date: 5 Aug 2025

Manufacturer: Mercedes-Benz
VIN: W1KAH5EB2PF116690

Model: C 300 e T 9G-TRONIC AMG Line



Vehicle details	
Manufacturer / Type / Model / Equipment	
Mercedes-Benz C 300 e T 9G-TRONIC AMG Line	
Vehicle Identification number	W1KAH5EB2PF116690
Mileage (Read)	102,902 km
First registration	10 Jul 2023
Number of holders	1
Next periodical technical inspection	07/2026
(Report not on hand)	
Power / Engine displacement	150 kw / 1,999 ccm
Fuel type / Cylinder	Hybr.B/E ext. edition / 4
Gearbox / Number of gears	Automatic / 9
Type of drive	Rear drive
Type of vehicle	Station wagon
Colour / colour code	Polarweiß
Doors / Seats	5 / 5
Upholstery type	Alcantara / Leather
Colour of upholstery	Anthracite-Black
Re/Import	no
Driving readiness	Not roadworthy / moveable



Vehicle details

Maintenance booklet / proof	digital proof / incomplete	Next maintenance in	17,949 km
Last maintenance on / at	06/2025 at 95,851 km		
Key is / should be	2 / 2	FZG documents	ZB#2 (B) was available (copy), ZB#1 (S) was not available
		Letter No.	GV684028
Previous damage / Accident	None detectable	Repainting	None detectable
Inspection conditions	Sufficient	Lifting equipment / pit	yes
Test drive	Not performed	Engine function test	Performed
Driving readiness	Not roadworthy / moveable		
Manufacturer key number/ type code number	2222 / BEP 00071		
Emission standard	EURO6;WLTP;AP;PI/CI; M, N1 I	Fine dust sticker	
Permitted total weight	2,655 kg	Empty weight	

Tyres

Mounted tyres

#	Tyre size	Type of tyre	Manufacturer	Tread depth
1)	225/45 R18 95Y	Summer tyres on Light alloy	Pirelli	5mm / 5mm
2)	255/40 R18 99Y	Summer tyres on Light alloy	Pirelli	7mm / 7mm

Additional tyres

#	Tyre size	Type of tyre	Manufacturer	Tread depth
1)	225/50 R17 98H	Winter tyres on Light alloy	Michelin	5mm / 5mm
2)	245/45 R17 99V	Winter tyres on Light alloy	Michelin	4mm / 4mm

Legend: Tread depth information for tires on the left is in the first place, for tires on the right is in the second place on the axle in the direction of travel

Equipment

Standard equipment

- Airbag for driver and front passenger
- Airbag: Center airbag
- Airbag: Sidebag for driver and front passenger combined thorax/pelvis bag
- Airbag: Windowbag for driver and front passenger
- Acoustic Peripheral Protection: To ensure your electric vehicle doesn't pose a danger to pedestrians and cyclists while driving almost silently, the Acoustic Peripheral Protection system generates Mercedes-Benz-specific sounds outside the vehicle up to speeds of approximately 30 km/h. It distinguishes between forward and reverse travel.
- Exterior mirrors left and right heated and electrically adjustable
- Brake assist, active
- Roof rails black
- DYNAMIC SELECT consisting of driving programs: Comfort, Sport, Eco mode
- ECO start-stop function
- 4-way electric window lifter
- Speed Limit Assistant The Speed Limit Assistant detects speed limits and displays them.
- Heated rear window
- Instrument panel and beltlines in ARTICO man-made leather in black nappa look
- Mechanical child safety lock for the rear doors
- Rear headrests (3)
- Front headrests
- Charging cable for household socket, 5m, smooth This charging cable, also called Mode 2 cable, allows you to charge the vehicle battery at the household socket with up to 1.8 kW (230 V, 1-phase, 8A) and fits sockets of type E/F CEE 7/7
- Load compartment cover including EASY-PACK safety net
- Charging system: 11 kW AC charging system. Greater flexibility: With the powerful AC charging system, you can charge your plug-in hybrid quickly and easily with up to 11 kW (3-phase) or 7.4 kW (single-phase). In addition to the wallbox at home, you can also connect your vehicle to a variety of public charging stations. These usually supply alternating current, just like conventional power outlets.
- Steering wheel: Multifunction sports steering wheel in nappa leather - sporty steering wheel in 3 double-spoke design, flattened at the bottom - version in nappa leather, deeply embossed in the grip area - horizontal double spokes in high-gloss black, vertical double spokes in silver chrome - shift paddles in silver chrome - control via touch control panels: left: instrument cluster, cruise control and limiter or active distance assistant DISTRONIC; right: multimedia system (e.g. audio volume and track selection, telephony and navigation), touch sensitivity adjustable.
- Center console in high-gloss black
- Airbag: Automatic front passenger airbag deactivation. The system automatically deactivates the front passenger airbag as soon as it detects a rear-facing child seat or registers that the front passenger seat is unoccupied. A transponder in the child seat is not required. If it detects that an adult is sitting in the seat, the airbag is automatically activated, reducing the risk of incorrect operation.
- Ambient lighting with 64 light colors
- AMG floor mats
- AMG sports pedal system made of brushed stainless steel with rubber studs
- Basic services Breakdown management Maintenance management Accident management Telediagnosis Remote vehicle diagnosis
- Double cup holders at the front
- EASY-PACK tailgate with electric operation for opening and closing
- Electronic Stability Program (ESP) including anti-lock braking system (ABS) and traction control (ASR)
- Transmission: Automatic 9-speed, 9G-TRONIC
- Rear window wiper
- Interior headliner fabric crystal grey
- ISOFIX child seat attachment with Top Tether in the rear
- KEYLESS-GO start function
- THERMATIC automatic climate control with 2 climate zones - Control via the central display or the climate control unit in the center console - Sensor system for recording, for example, interior/outside temperature, sunlight, humidity, and dew point - Automatic air recirculation (only in conjunction with navigation system) - Ventilation system consisting of: 3 center vents in the center level and 2 side vents - Fine dust activated carbon filter for filtering dust, soot, and pollen - Dew point sensor - Residual heat function for efficient use of waste engine heat
- LED High Performance headlights The elements of the LED High Performance headlights: - Torch and trifunctional light guide for daytime running lights, position lights and direction indicators - Multi-chamber reflector system with 4 individual reflectors each for low beam and high beam The elements of the rear lights in LED technology: - All light functions in full LED technology - Tail light - Brake light and parking light - Rear fog light (left side only) - Direction indicator - Reversing light - 3rd brake light
- The Mercedes-Benz emergency call system can provide a decisive time advantage in an emergency. A communications module with its own SIM card automatically triggers an emergency call when an accident is detected, which can shorten the time until emergency services arrive. The emergency call can also be triggered manually to organize assistance.
- Gasoline particulate filter



- Package: Storage - Storage compartment with net on the left in the cargo area - Double cup holder in the center console for 2 x 750 ml - Rubber strap on the right in the cargo area - Folding box under the loading floor - 1 additional bag hook on the right in the cargo area - Trough including storage tray on the right in the cargo area - Map pockets on the backs of the front seats - Reversible mat in the trunk floor
- Package: Park - 12 ultrasonic sensors - Rear view camera - Active Parking Assistant with PARKTRONIC: detects free parking spaces, assisted parking, visual and acoustic warning, display of camera and ultrasonic data in the media display - Cross traffic warning: can provide a visual and acoustic warning when cross traffic is detected while reversing out of a parking space and, if necessary, automatically initiate emergency braking - Reverse maneuvering braking: can trigger a braking process - Drive-away assistance
- Radio: MBUX - fully digital instrument display with 26 cm (10.25") LCD color display and a resolution of 1,440 x 540 pixels - Bluetooth telephony / audio - WLAN hotspot
- Radio accessories: Digital radio (DAB)
- Radio accessories: Central display - High-resolution central display, slightly inclined towards the driver, with 24 cm (9.5") screen diagonal, with MBUX multimedia system - touch display with LCD technology
- Tire pressure monitoring (TPMS)
- Remote Services Plus - Communication module - Mercedes me Services Remote vehicle status query Programming of auxiliary heating/ventilation Remote door locking and unlocking Sunroof/ windows with remote locking and opening including ventilation radio Personalized vehicle location Vehicle tracking Geographical vehicle monitoring Parking service monitoring Locator function (Remote Vehicle Finder) Notification when driving at excessive speed Send2Car function
- Cruise control
- Electronic immobilizer
- Decorative elements metal structure

Extra equipment

- Active Distance Assist DISTRONIC automatically regulates the distance to the vehicle in front.
- KEYLESS-GO access and driving authorization system
- Charging cable for wallbox and public charging station, 5m, smooth 11kW This charging cable, also called Mode 3 cable, allows you to charge the vehicle battery at the wallbox or at public charging stations with up to 11 kW (Type 2, 3-phase, 16 A).

- Package: Interior lighting package - Illuminated glove compartment - Illumination of the wireless mobile interface or the storage compartment for mobile phones - Illumination of the storage compartment in the center console or the double cup holder - Illumination of the storage compartment under the armrest of the center console - two make-up lights in front - two reading lights in the roof control unit - two reading lights in the interior mirror in conjunction with mirror P - - two reading lights and interior light function in the grab handles in the rear - Illumination of the trunk or loading area
- Upholstery: ARTICO man-made leather/MICROCUT microfiber
- Radio: Advanced MBUX functions - Personalization (profiles) and prediction functions - MBUX voice assistant "LINGUATRONIC" with natural language understanding - Activation via Hey Mercedes - MBUX voice assistant learning function through connection to a cloud-based online dictionary, Mercedes me connect service available free of charge for 3 years from activation - Wi-Fi hotspot - Internet radio
- Radio accessories: Communication module (LTE) for using Mercedes me connect services The communication module with a vehicle-mounted, LTE-capable SIM card offers you added convenience and safety. It continuously connects you with your vehicle - and the vehicle with the infrastructure such as the Mercedes-Benz server or the Internet. This enables you to use services such as Live Traffic Information from Mercedes me connect.
- Wheels: 45.7 cm (18") AMG light-alloy wheels in 5-spoke design, aerodynamically optimized, painted tremolite gray with a high-sheen finish with 225/45 R 18 (front axle) on 7.5 J x 18 H offset 40 (rear axle) 245/40 R 18 on 9 J x 18 H offset 58
- Windscreen wipers with rain sensor
- Seats: Folding seat backrests in the rear
- Lane Keeping Assist, active
- High-visibility vest for drivers
- Central locking with remote control

- Head-up display
- Interior headliner fabric black
- Paintwork: Uni special paint
- Charging system: Direct current charging system (DC charging) For optimal charging speed with a maximum of 55 kW and thus maximum convenience. Fast charging stations such as IONITY supply the direct current required for your high-voltage battery. Thus, the DC charging system provides the best possible electric range in the shortest possible time.



- Package: Advanced Infotainment Package MBUX Navigation Premium (hard drive navigation, pre-installation for Live Traffic Information) Traffic Sign Assistant Smartphone Integration (wirelessly connects the mobile phone to the multimedia system via Apple CarPlay and Android Auto) Wireless charging system for mobile devices in the front Driver display - 31.2 cm (12.3") large LCD color display Central display - 30.2 cm (11.9"), touch display with LCD technology
- Package: Assistance - Blind Spot Assist: The system can warn you of side collisions with other road users in the blind spot, especially when you activate the indicator. Even after the journey, the system remains alert and warns you if you open the door at the wrong moment. Important protection - especially for cyclists.
- Package: High-end comfort package - heated seats for driver and front passenger - memory package: driver and front passenger seats, steering column and exterior mirrors electrically adjustable and storable; seat longitudinal position and headrest height also electrically adjustable; 3 storage options for the settings for driver and front passenger; 4-way lumbar support for driver and front passenger; seat cushion depth adjustment with gap-free cushion; PRE-SAFE positioning function for the front passenger seat
- Package: Public Charging - Charging cable for wallbox and public charging stations, 5m, smooth (charging the vehicle battery at the wallbox or at public charging stations with up to 11 kW (Type 2, 3-phase, 20 A)) - Remote and Charging Services Plus
- Radio accessories: Advanced sound system with 9 speakers and 225 watts system power
- Wheels: Summer complete wheels fitted ex works
- Wheels: Winter complete wheels M+S 4-way 43.2 cm (17") light alloy wheels 5-spoke design, high-sheen, front axle 225/50 R17 on 7 J x 17 ET44.5 rear axle 245/45 R17 on 8 J x 17 ET49.5
- Heat-insulating dark tinted glass
- Package: Advanced Lighting Package DIGITAL LIGHT: -HD system with projection module (more than 1.3 million pixels per headlight) and background module MULTIBEAM LED -Adaptive Highbeam Assist Plus -ULTRA RANGE high beam with a range of more than 600 m -Topography compensation -Cornering light with roundabout and intersection function -Active cornering light with predictive control -Extended fog light, city light, country road light, motorway light, motorway high beam and bad weather light
- Package: Driving Assistance Active Distance Assist. DISTRONIC Active Speed Limit Assist., Advanced Automatic Restart on Motorways., Route-Based Speed Adaptation with End of Traffic Jam Function. Active Traffic Jam Assist. Active Steering Assist., Active Lane Change Assist. Active Emergency Stop Assist., Emergency Lane Function. Active Brake Assist with Vehicle, Bicycle, and Pedestrian Detection; Intersection Function, Turning Function, End of Traffic Jam Emergency Braking Function. Evasive Steering Assist. Active Lane Keeping Assist. Active Blind Spot Assist., Exit Warning Function.
- Package: Infotainment package MBUX Navigation Premium (hard drive navigation, preparation for Live Traffic Information) Traffic sign assistant Smartphone integration (connects the mobile phone wirelessly to the multimedia system via Apple CarPlay and Android Auto) Wireless charging system for mobile devices in the front
- Package: Mirror package - both exterior mirrors electrically foldable (button in the driver's door control panel) - interior mirror and exterior mirror on the driver's side automatically dimming - ambient lighting of the exterior mirror to illuminate the entry area with projection of the Mercedes-Benz logo
- Seats: Sports seats
- Heat and noise-insulating acoustic glass for the windshield and front doors

Brief expert findings

Documents submitted	At the time of the inspection, the registration certificate Part 2 (letter) was available, but the registration certificate Part 1 (certificate) was not. (Copy)
VIN comparison	The vehicle identification number (VIN) was read and the undersigned verified that it matched the documents submitted during the inspection.
Inspection	The inspection conditions were sufficient for the assessment of the vehicle. Lifting equipment and a pit were available for examining the vehicle.
Test drive	No test drive/maneuvering was carried out during the inspection of the vehicle.
Engine function test	An engine test run was performed.
Driving readiness	At the time of inspection, the vehicle was not drivable under its own power, but can be moved on its own axle with the aid of auxiliary equipment.

Value reducing factors

No.	Component group	Description
1	Boot lid / rear door	Boot lid - dent(s) - Smart repair
2	Door - front left side	Door - Scratch(es) - Smart repair



No.	Component group	Description
3	Wheel / tyres	Tyre - right (Falsche Größe) - Differs from the original configuration - Replace
4	2nd wheel set	2 tyres - Worn - Replace
5	Bonnet	Bonnet - Stone chips - Paint
6	Front bumper	Front bumper - Scratched - Paint

Wear and tear

No.	Component group	Description
1	Vehicle glazing	Windscreen with lane departure assistant - Stone chips - No deduction

The vehicle shows signs of wear commensurate with its age and use.

Order/Scope of order

The order was placed to prepare a sales report for the vehicle described. This includes the following:

- Description of core relevant information about the vehicle
- Documentation of equipment features
(*Delivery by third-party service providers*)
- Documentation of damage, defects, missing parts
- Documentation of previous damage, unrepaired previous damage, repainting
- a brief visual or functional inspection of the equipment details if possible.
(*Functional tests of driver assistance systems are not included in the scope of services!*)
- a photo documentation of the vehicle

Basis for the order

This product is based on the Alphabet Fuhrpark GmbH guidelines for vehicle returns and valuations. The expert makes the explicit findings in each individual case objectively within the framework of the specified standards based on his or her own expertise.

The vehicle inspection takes place in a disassembled state.

Damage or defects that can only be detected during disassembly/diagnosis work or through advanced knowledge remain within the scope of the prognosis risk. An extended risk exists for concealed defects caused by fraudulent deception and not identifiable by the expert.

Damage or defects resulting from normal use or wear and tear of the vehicle will be accepted according to the applicable standard.

There was no explicit identification or monetary consideration of the expected features within the product.

Features which in their nature and severity slightly exceed normal use but do not constitute unacceptable damage will be documented and identified under signs of use if necessary.

Damage or defects which, according to the underlying standard, can no longer be attributed to normal use or wear and tear are listed in the product under "Depreciating Factors".

Depending on the product specification, a monetary ID can be provided. If this takes place, the costs can be 100% d or pro rata depending on the vehicle's age and mileage.

Previous damages

Apparently, no repaired previous damage could be found on the vehicle.



Figure 1: Diagonal front (left)



Figure 2: Diagonal front (right)



Figure 3: Diagonal rear (left)



Figure 4: Diagonal rear (right)



Figure 5: Interior - front



Figure 6: Interior - rear



Figure 7: Instrument cluster



Figure 8: Instrument panel



Figure 9: interior 360° view



Figure 10: Cargo area



Figure 11: VIN



Figure 12: Mounted tyres



Figure 13: Documents



Figure 14: Additional tyres

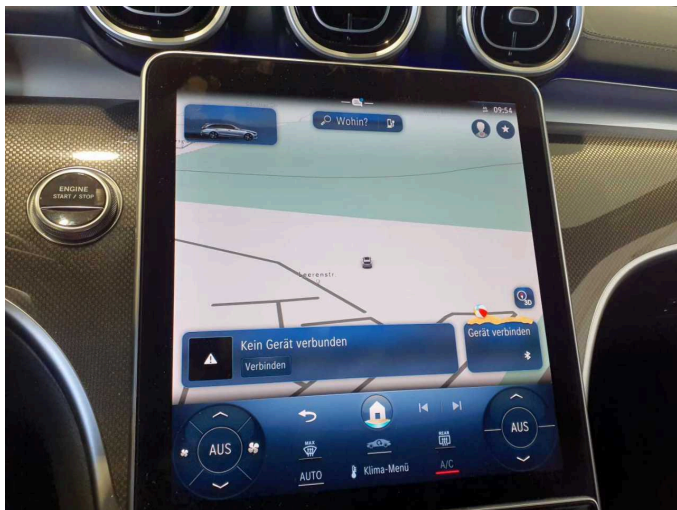


Figure 15: Navigation



Figure 16: Misc.



Figure 17: Misc.



Figure 18: Misc.

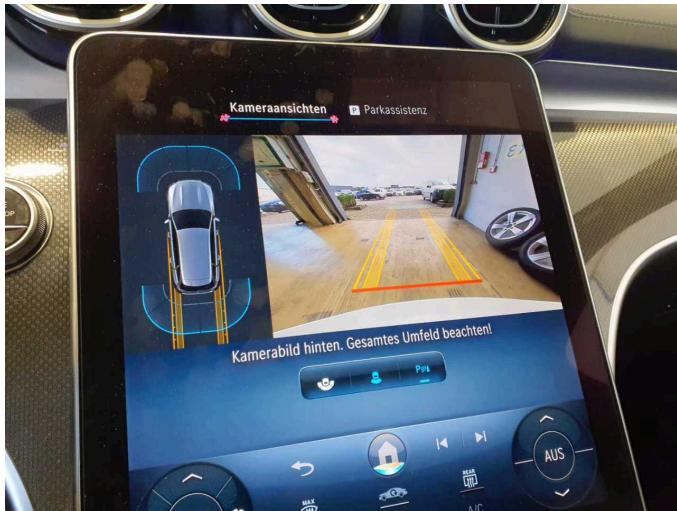


Figure 19: Misc.



Figure 20: Misc.

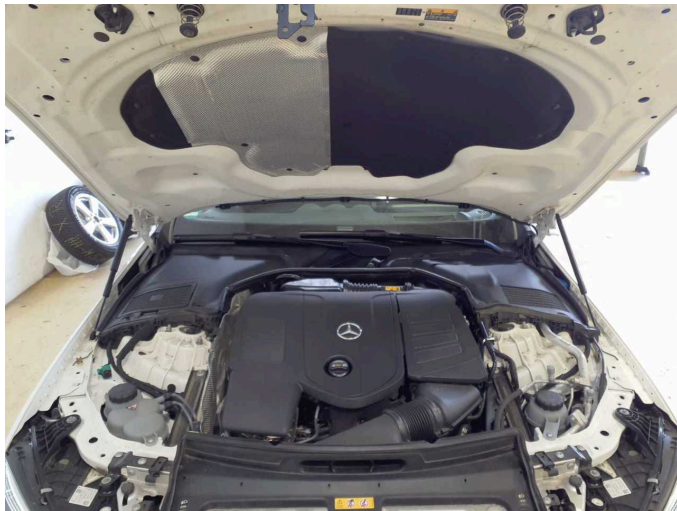


Figure 21: Misc.



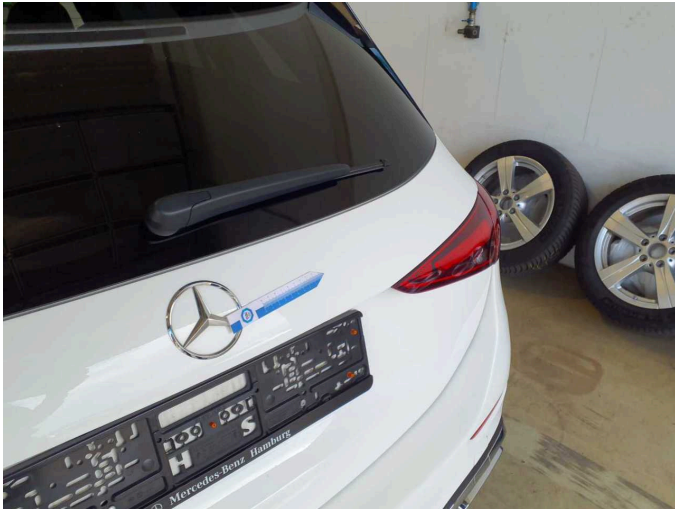
Figure 22: Misc.



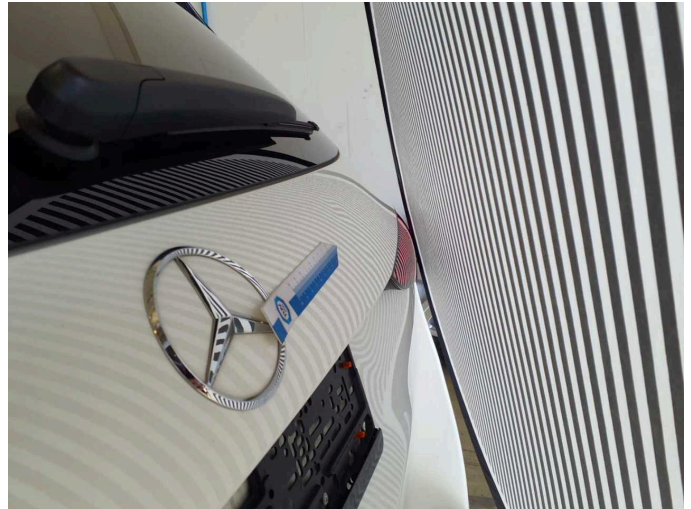
Figure 23: Misc.



Figure 24: Misc.



Damage 1: Boot lid / rear door: Boot lid - dent(s) - Smart repair



Damage 1: Boot lid / rear door: Boot lid - dent(s) - Smart repair



Damage 2: Door - front left side: Door - Scratch(es) - Smart repair



Damage 2: Door - front left side: Door - Scratch(es) - Smart repair



Damage 4: 2nd wheel set: 2 tyres - Worn - Replace



Damage 4: 2nd wheel set: 2 tyres - Worn - Replace



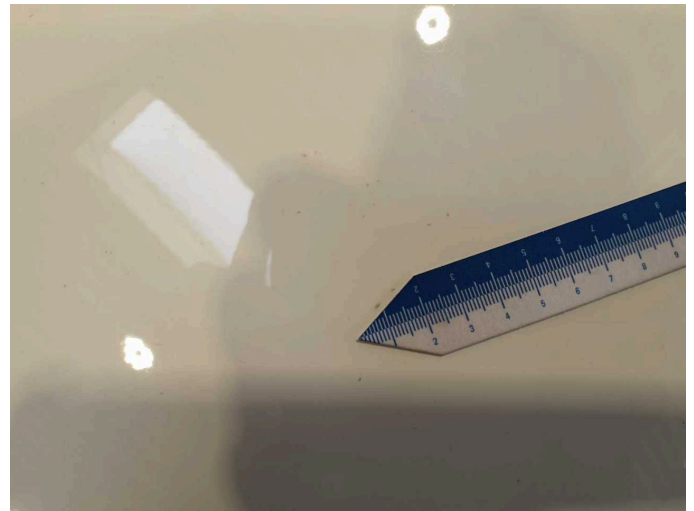
Damage 4: 2nd wheel set: 2 tyres - Worn - Replace



Damage 4: 2nd wheel set: 2 tyres - Worn - Replace



Damage 5: Bonnet: Bonnet - Stone chips - Paint



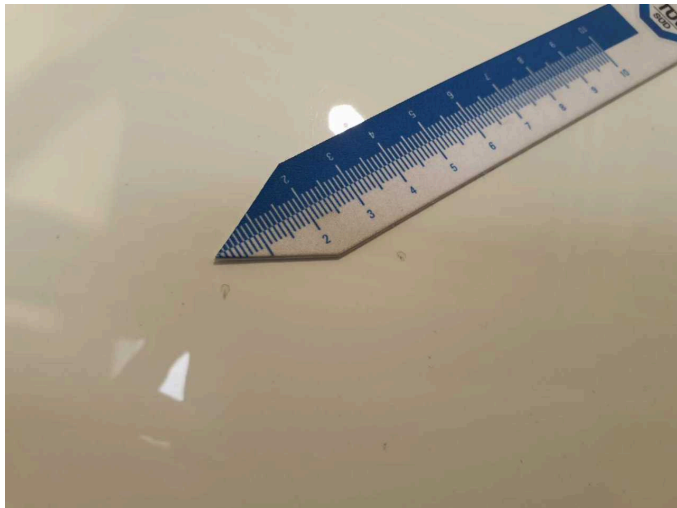
Damage 5: Bonnet: Bonnet - Stone chips - Paint



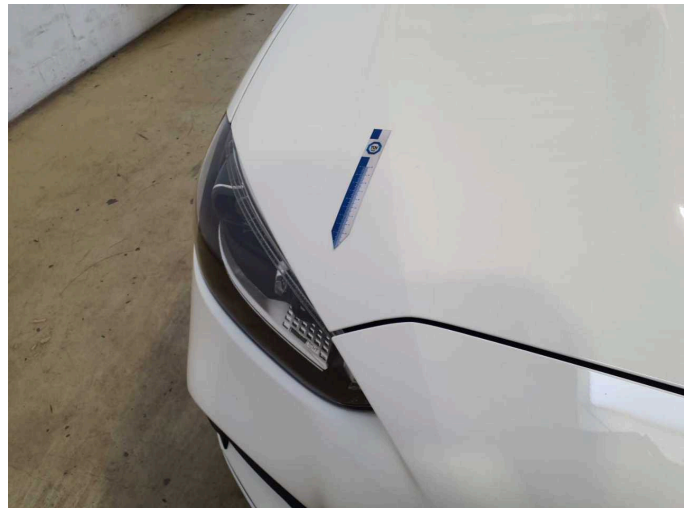
Damage 5: Bonnet: Bonnet - Stone chips - Paint



Damage 5: Bonnet: Bonnet - Stone chips - Paint



Damage 5: Bonnet: Bonnet - Stone chips - Paint



Damage 5: Bonnet: Bonnet - Stone chips - Paint



Damage 5: Bonnet: Bonnet - Stone chips - Paint



Damage 6: Front bumper: Front bumper - Scratched - Paint



Damage 6: Front bumper: Front bumper - Scratched - Paint



Damage 6: Front bumper: Front bumper - Scratched - Paint



Damage 6: Front bumper: Front bumper - Scratched - Paint



Wartungshistorie

(gemäß Auftraggeber Informationen)

Fahrgestellnummer: W1KAH5EB2PF116690

Hersteller / Modell: MERCEDES-BENZ MB C 300 e T 9G-TRONIC AMG Line

Datum	KM-Stand	Beschreibung
11.06.2025	95.900	Bremsscheiben vorne
02.06.2025	95.851	Bremsklötze hinten; Regelwartungsdienst
12.12.2024	71.302	Regelwartungsdienst
02.07.2024	46.764	Regelwartungsdienst
17.05.2024	43.127	Bremsscheiben vorne
06.12.2023	23.141	Regelwartungsdienst