



MERCEDES-BENZ C-Klasse

C 200 T 9G-TRONIC

VIN NO W1KAH4CB5SF172905
Registration Number B5SF172905



MOT Date	Number of Owners	Number of Keys	Odometer Reading
-	1	2	13291 km
Last Service	Last Service Mileage	First Registration Date	Country First Registered
-	-	2024-09-13	-

Inspection Report Summary

Customer	BCA Online	Report Number	P20250918120126
Inspection Date / Place	2025-09-18 / Horst Mosolf GmbH & Co. KG Ketzin	Cosmetic Grade	1

Vehicle Summary

Vehicle Condition	Runner	VAT Type	Qualifying
Fuel Type	Petrol	Road Worthy	No
Colour	Grey	Engine Size (cc)	1496
Engine Size	1.5	No of Doors	5
Body Type	Stationwagon / Estate	Drive Train	Rear
Seat Colour		No of Seats	5
Seat Covering Name	ARTICO / Tomasi schwarz	Seat Covering	Cloth/Synthetic Leather
Charging Cables		WLTP CO2 Emissions	
Gearbox Type	Automatic		

Vehicle History & Documents

Service Book Available	Missing	Next Service Mileage	km
Previous Usage	Rental Car	Imported	No
Manufacturer Warrenty			







Equipment

Tinted Glass	Trip Computer	Airbag Status	AndroidAuto
AppleCarPlay	Cruise control	Digitaldashboard	Front parking sensors
Remote adjusting wing mirrors	Reversing Camera	Satellite navigation	Stability control
Electrically folding wing mirrors	Leather steering wheel	Radio	Tow ball
USB Socket	Alloys wheels	Anti-lock braking	Bluetooth telephone interface
Digital Radio	Enhanced speaker system	Parking Assistance	Remote central locking
Roof rails	Split folding rear seats	Central locking	Electrictailgate
LED Headlamps	Rear parking sensors		

Equipment Details

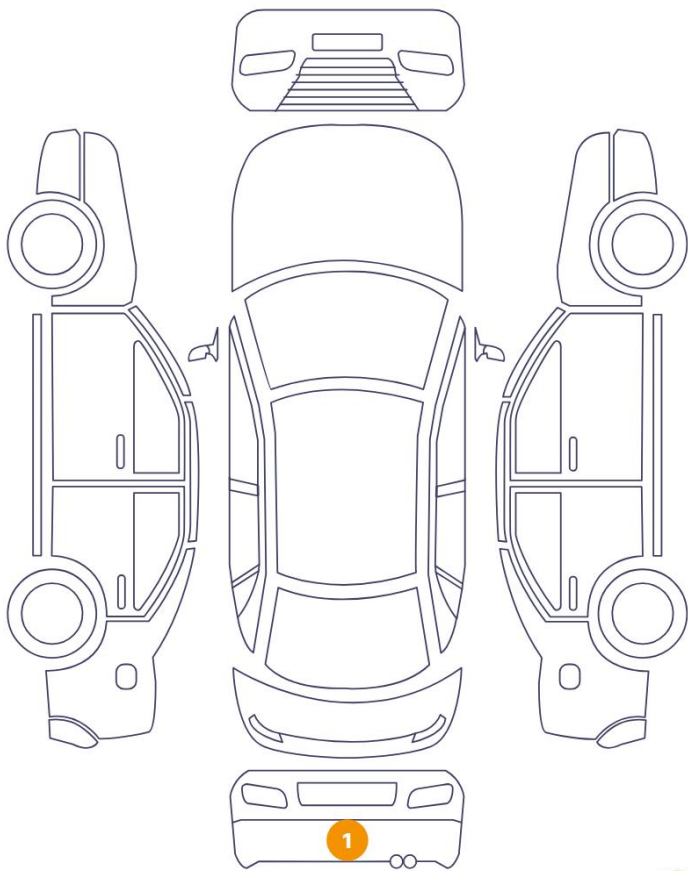
Tow Ball Type	Electronic	Air Conditioning	Climate Control
Alloy Wheel Size	17	Seat Heating	Front

Wheels & Tyres

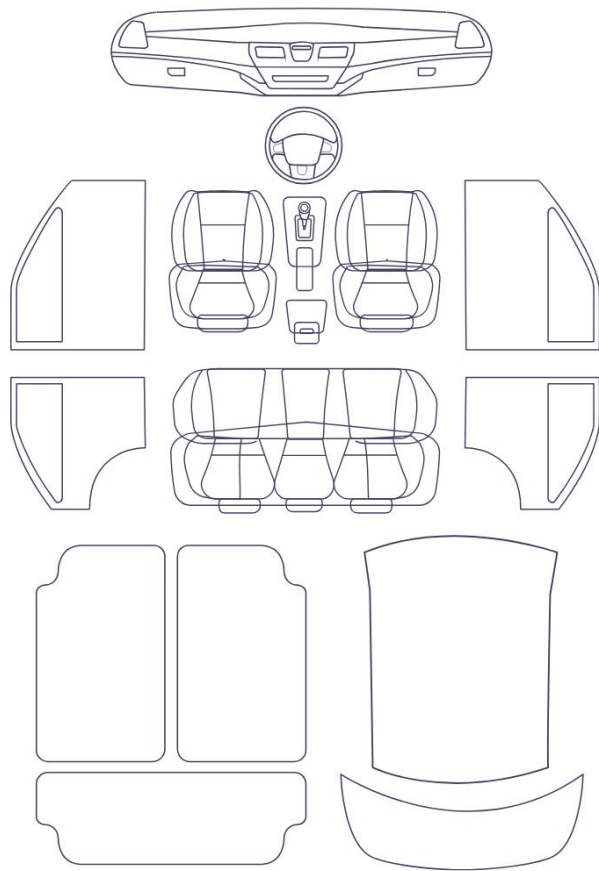
Right Front Tyre Depth	6	Left Front Tyre Depth	6
Right Rear Tyre Depth	6	Left Rear Tyre Depth	6

Cosmetic Damage

2 Schäden



0 Schäden

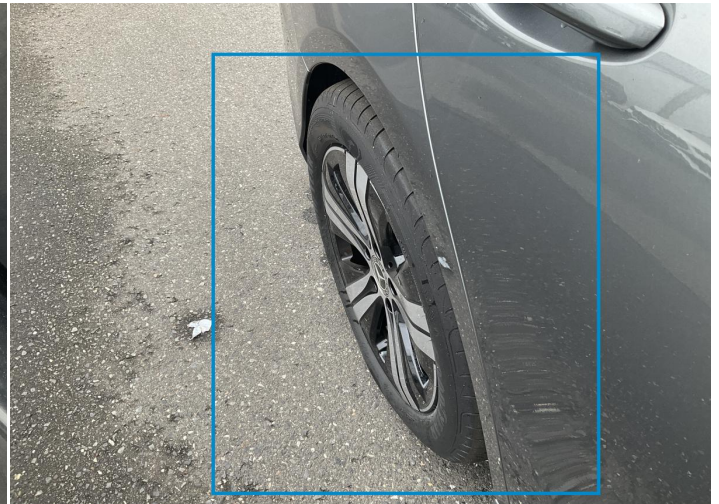


48 1

Component		Damage	Comments
1	Bumper / Back	Paint / Scratch / Scuff	
2	Other	Bodywork / Assembly	



1. Bumper / Back
Paint / Scratch / Scuff -



2.
Bodywork / Assembly -

Mechanical Condition

Control Lights

Display Defect	✓	Service Light	✓
ESP Fault/Traction Control Malfunction Light	✓	ABS Warning Light	❗
Airbag Warning Light	✓	Oil Pressure Warning Light	✓
Brake Warning Light	❗	Power Steering Warning Light	❗
Alternator / Battery	✓	All - wheel Drive	✓
No Dashboard Lights	✓	Tire Pressure Monitoring System	✓

Hybrid/EV

Hybrid System Fault	✓
---------------------	---

Engine

Engine Starts	✓	Engine Status / EML	✓
Engine Leak Visible	✓		

Equipments Test

Central Locking	✓	Main & Spare Keys Functioning	✓
Electric Windows	✓	Navigation System	✓
Audio Equipment	✓	Parking Sensors / Cameras Functioning	✓
AC / Heating System	✓		

Gearbox

Gear Box	✓
----------	---

Levels

Brakes Fluid	✓	Coolant Fluid	✓
--------------	---	---------------	---

Test Drive Inspection


Steering Wheel

Steering | Noise / Anomaly 


Engine





Engine Noise		The Gears Scratch / Skip / Abnormal Operation	
Fume Quantity		Power Loss	

Brake

Brake System Anomaly 

General

Test Driven Status 

-  **No troubles detected, good condition or correct tests, according to vehicle age and mileage**
-  **Damages or malfunction detected that requires repairs by the buyer**
-  **Not applicable**
-  **Not tested**

Disclaimer

Please also note the "UserGuide condition report", which shows the scope of the vehicle description. [User Guide](#)