



Expertise

Protocol number: 40922192  
Order No. / Reference: 24960065  
Inspection date: 5 Aug 2025

Manufacturer: Mercedes-Benz	Model: C 300 d T 9G-TRONIC AMG Line Advanced
VIN: W1KAH0GBXRF147656	



Vehicle details	
Manufacturer / Type / Model / Equipment	
Mercedes-Benz C 300 d T 9G-TRONIC AMG Line Advanced	
Vehicle Identification number	W1KAH0GBXRF147656
Mileage (Read)	27,784 km
First registration	31 Jan 2024
Number of holders	1
Next periodical technical inspection	01/2027
(Report not on hand)	
Power / Engine displacement	195 kw / 1,993 ccm
Fuel type / Cylinder	Hybrid Diesel / E / 4
Gearbox / Number of gears	Automatic / 9
Type of drive	Rear drive
Type of vehicle	Station wagon
Colour / colour code	Mojavesilber Metallic
Doors / Seats	5 / 5
Upholstery type	Cloth / leather combination
Colour of upholstery	Black-Anthracite
Re/Import	no
Vehicle with smoke odor	no
Driving readiness	Roadworthy



## Vehicle details

<b>Maintenance booklet / proof</b>	digital proof / complete	<b>Next maintenance in</b>	292 Tag(e)
<b>Last maintenance on / at</b>	03/2025 at 23,816 km		
<b>Key is / should be</b>	2 / 2	<b>FZG documents</b>	ZB#2 (B) was available (copy), ZB#1 (S) was not available
		<b>Letter No.</b>	GY560254
<b>Previous damage / Accident</b>	Detectable	<b>Repainting</b>	None detectable
<b>Inspection conditions</b>	Sufficient	<b>Lifting equipment / pit</b>	yes
<b>Test drive</b>	Short drive on the company premises	<b>Engine function test</b>	Performed
<b>Driving readiness</b>	Roadworthy		
<b>Manufacturer key number/ type code number</b>	2222 / AY1 00173		
<b>Emission standard</b>	EURO6;WLTP;AP;PI/CI; M, N1 I	<b>Fine dust sticker</b>	
<b>Permitted total weight</b>	2,400 kg	<b>Empty weight</b>	

## Tyres

### Mounted tyres

#	Tyre size	Type of tyre	Manufacturer	Tread depth
1)	225/45 R18 95Y	Summer tyres on Light alloy	Goodyear	6mm / 6mm
2)	245/40 R18 97Y	Summer tyres on Light alloy	Goodyear	6mm / 6mm

### Additional tyres

#	Tyre size	Type of tyre	Manufacturer	Tread depth
1)	225/45 R18 95V	Winter tyres on Light alloy	Bridgestone	5mm / 5mm
2)	225/45 R18 95V	Winter tyres on Light alloy	Bridgestone	6mm / 6mm

### Replacement

Typ	Tyre size	Type of tyre	Manufacturer	Tread depth
Tirefit		Expiration date 02/2029		

**Legend:** Tread depth information for tires on the left is in the first place, for tires on the right is in the second place on the axle in the direction of travel

## Equipment

### Standard equipment

- Adaptive high beam assistant (automatic switching on and off of the high beam - camera on the inside of the windscreen - detects oncoming and preceding illuminated vehicles - switched on by pressing the steering wheel control lever to the high beam position)
- Airbag: Center airbag
- Airbag: Sidebag for driver and front passenger (combined thorax/pelvis bag)
- Airbag: Windowbag for driver and front passenger
- AMG floor mats
- ATTENTION ASSIST (the attention assistant) (can detect typical signs of fatigue through driver behavior and warn the driver of increasing fatigue or inattention)
- Basic services (breakdown management, maintenance management, accident management, telediagnosis, remote vehicle diagnosis)
- Roof rails in matt black
- Double cup holders at the front
- EASY-PACK tailgate (with electric operation for opening and closing)
- Driver display (31.2 cm (12.3") LCD color display with a resolution of 2,400 x 900 pixels - five different menus with specific content and display styles)
- 4-way electric window lifter
- Speed Limit Assistant (The Speed Limit Assistant detects and displays speed limits.)
- Transmission: Automatic 9-speed, 9G-TRONIC
- Rear window wiper
- Heated rear window
- Instrument panel and beltlines in ARTICO man-made leather with a nappa look
- Mechanical child safety lock for the rear doors
- Rear headrests (3)
- Front headrests
- Fuel tank with larger volume 66 l
- Load compartment cover including EASY-PACK safety net
- LED high-performance headlights (low beam with LED projection technology, high beam with LED reflection technology, daytime running light, position light and direction indicator in LED technology, adaptive full-LED rear lights with automatic adjustment of the light intensity to the environment)
- Airbag for driver and front passenger
- Airbag: Automatic passenger airbag deactivation (The system automatically deactivates the passenger airbag as soon as it detects a rear-facing child seat or registers that the passenger seat is unoccupied. A transponder in the child seat is not necessary. If it is detected that an adult is sitting down, the airbag is automatically activated and the risk of incorrect operation is reduced.)
- Ambient lighting with 64 light colors (Three dimming zones (total, ambient and accent) - Variable brightness setting - 64 colors - Ten color moods - Integrated into the ENERGIZING comfort control programs)
- Exterior mirrors left and right heated and electrically adjustable
- Brake system with larger brake discs on the front axle
- Brake assist, active
- diesel particulate filter
- DYNAMIC SELECT (consisting of driving programs: Comfort, Sport, Eco mode)
- Electronic Stability Program (ESP) (including anti-lock braking system (ABS) and traction control (ASR))
- Chassis: AGILITY CONTROL chassis with selective damping system with lowering
- Fingerprint scanner (color-illuminated fingerprint scanner in the control bar below the central display - two fingerprints can be stored per user - quick access replaces PIN entry - protects personal data such as profiles as well as office and payment functions)
- Interior headliner fabric crystal grey
- ISOFIX child seat attachment with Top Tether in the rear
- KEYLESS-GO start function
- THERMATIC automatic climate control with 2 climate zones (controlled via the central display or the climate control unit in the center console; sensor system for recording, for example, interior/outside temperature, sunlight, humidity, and dew point; automatic air recirculation (only in conjunction with navigation system); ventilation system consisting of: 3 center vents in the center level and 2 side vents; fine dust activated carbon filter for filtering dust, soot, and pollen; dew point sensor; residual heat function for efficient use of engine waste heat)
- Mercedes-Benz emergency call system (can provide a decisive time advantage in an emergency. A communication module with its own SIM card automatically triggers an emergency call when an accident is detected, which can shorten the time until emergency services arrive. The emergency call can also be triggered manually to organize assistance.)
- Center console in high-gloss black



- Steering wheel: Multifunction sports steering wheel in nappa leather (sporty steering wheel in 3-twin-spoke design, flattened at the bottom - version in nappa leather, deeply embossed in the grip area - horizontal double spokes in high-gloss black, vertical double spokes in silver chrome - shift paddles in silver chrome - control via touch control panels: left: instrument cluster, cruise control and limiter or Active Distance Assist DISTRONIC; right: multimedia system (e.g. audio volume and track selection, telephony and navigation), touch sensitivity adjustment.)
- Package: Storage (luggage net on the left side of the side panel in the trunk or loading area - rubber tensioning strap on the right in the loading area (only for the T-model) - folding box under the loading floor (not available for plug-in hybrid vehicles) - double cup holder in the center console for 2 x 750 ml - map pockets on the back of the front seats)
- Package: Interior lighting package (Illuminated glove compartment - Illumination of the wireless mobile interface or the storage compartment for mobile phones - Illumination of the storage compartment in the center console or the double cup holders - Illumination of the storage compartment under the center console armrest - Two vanity lights in front - Two reading lights in the overhead control unit - Two reading lights and interior lighting function in the grab handles in the rear - Illumination of the trunk or cargo area)
- Package: Seat comfort (various electric and manual adjustment options for the front seats to adapt to the specific body and comfort requirements of the driver and front passenger - electro-pneumatic 4-way lumbar support - electric seat cushion inclination adjustment - electric height adjustment - electric backrest adjustment - electric seat cushion depth adjustment by 6 cm with leg rest pad - mechanical length adjustment - mechanical headrest adjustment)
- Package: USB (2 USB-C ports under the front center armrest, suitable for data transfer)
- Upholstery: ARTICO man-made leather/MICROCUT microfiber
- Radio: MBUX multimedia system (17.78 cm (7") instrument display - 17.78 cm (7") media display with touch function - touch control buttons on the steering wheel - radio (FM/AM) - USB port in the center console under the armrest - Bluetooth telephony with contact transfer and audio streaming of music files - display of vehicle functions (driver assistance systems, driving programs, and vehicle settings) - favorites storage - smartphone-related voice control)
- Radio accessories: Central display (touch display with LCD technology - 30.2 cm (11.9") screen diagonal - resolution of 1,624 x 1,728 pixels (width x height) - tilted 6° - 7° towards the driver)
- Tire pressure monitoring (TPMS)
- Wheels: 45.7 cm (18") AMG light-alloy wheels in 5-spoke design (aerodynamically optimized, painted tremolite gray with a high-sheen finish with 225/45 R 18 tires on 7.5 J x 18 H offset 40 (front axle) and 245/40 R 18 tires on 9 J x 18 H offset 58 (rear axle))
- Navigation: MBUX Navigation Premium (pre-installation for navigation services - package (tax code) - multimedia / digital content - hard drive navigation - pre-installation for live traffic information - communication module (LTE) for the use of Mercedes me connect services)
- Package: AMG Line Advanced (00U Remote Services - 70B Driver's High-Visibility Vest - P29 AMG Line Interior - P31 AMG Line Exterior - PBG MBUX Navigation Premium)
- Package: Trunk Comfort (rear seat backrests electrically foldable via switches on the right and left in the control panel in the cargo area - Electric opening and closing of the cargo blind - 12 V socket on the left in the control panel in the cargo area - Reversible mat with one rubberized, non-slip side and one soft velour side)
- Package: Parking package with rear view camera (12 ultrasonic sensors - rear view camera: integrated in the trunk lid, shown in the central display, trailer mode - Active Parking Assistant with PARKTRONIC - detects free parking spaces - assisted parking - visual and acoustic warning of detected obstacles - display of camera and ultrasonic data in the central display - button for the Active Parking Assistant - warning of cross traffic - maneuvering braking when reversing - drive-away assistance)
- Package: Mirror package (both exterior mirrors can be electrically folded in and out (button in the control panel of the driver's door) - interior mirror and exterior mirror on the driver's side automatically dim - ambient lighting of the exterior mirror to illuminate the entry area with projection of the Mercedes-Benz logo)
- Radio: Advanced MBUX functions (personalization (profiles) and prediction functions - MBUX voice assistant with natural language understanding - activation via "Hey Mercedes" - learning function of the MBUX voice assistant by connecting to a cloud-based online dictionary - WiFi hotspot - Internet radio)
- Radio accessories: Digital radio (DAB)
- Radio accessory: Communication module (LTE) for using Mercedes me connect services (The communication module with a vehicle-mounted, LTE-capable SIM card offers you added convenience and safety. It continuously connects you to your vehicle—and the vehicle to infrastructure such as the Mercedes-Benz server or the internet. This allows you to use services such as Live Traffic Information from Mercedes me connect.)
- Remote Services (communication module - Mercedes me services: - programming auxiliary heating/ventilation: -remote door locking and unlocking -sliding roof/window with remote closing and opening including ventilation function -personalization -vehicle location - vehicle tracking -geographical vehicle monitoring -valet parking monitoring -finding function (remote vehicle finder))



- Windscreen wipers with rain sensor
- Power steering
- Seats: Folding seat backrests in the rear
- Lane Keeping Assist, active
- Telephone accessories: Wireless charging system for mobile devices (wireless charging according to Qi standard for compatible mobile phones - quick connection between multimedia system and mobile phone via Near Field Communication (NFC) for identifying the mobile device - storage for wireless charging is located in the spontaneous storage compartment at the front of the center console)
- Cruise control
- TIREFIT with tire inflation compressor
- Fully digital instrument display (Freestanding, fully digital instrument display with 26 cm (10.25") color LCD display and a resolution of 1,440 x 540 pixels)
- High-visibility vest for drivers
- Electronic immobilizer
- Central locking with remote control

#### Extra equipment

- Interior headliner fabric black
- Package: Driver Assistance Package Plus (Active Distance Assist DISTRONIC, Active Speed Limit Assist, Advanced Automatic Restart on Freeways, Route-Based Speed Adaptation with End of Traffic Jam Function, Active Traffic Jam Assist, Active Steering Assist, Active Lane Change Assist, Active Emergency Stop Assist, Emergency Lane Function, Active Brake Assist with Vehicle, Bicycle and Pedestrian Detection; Intersection Function, Turning Function, End of Traffic Jam Emergency Braking Function, Evasive Steering Assist, Active Lane Keeping Assist, Active Blind Spot Assist, PRE-SAFE Impulse Page PRE-SAFE System)
- Decorative elements wood black open-pored aluminium lines

- Seats: Seat heating for driver and front passenger (Cozy warmth and therefore high seating and travel comfort. In cooler weather or according to your personal wishes, the seat heating quickly brings the seat surfaces and backrests to a comfortable temperature. The intensity can be selected in three levels. Intelligent and comfortable: The seat heating switches back automatically.)
- Telephone accessories: Smartphone integration (connects the mobile phone wirelessly to the MBUX multimedia system - display of apps from selected third-party providers - access to current software and data e.g. for navigation, traffic information, contact details, messaging, telephony, media, IP radio - user interface prepared and optimized for driving - control of smartphone functions via voice control)
- Preparation for digital key handover (Share your vehicle key even without handing it over in person - Decide who you open the vehicle and hand over the key to - Use the functions conveniently in the Mercedes me app)

- Paint finish: metallic
- Package: Winter package (steering wheel heating - heated windshield washer system)
- Radio accessories: Advanced Sound System (4 midrange speakers - 2 tweeters - 2 front bass speakers - 1 center speaker - 225 W amplifier power)
- Sunroof: Electric panoramic sunroof
- Traffic Sign Assistant (Networked system consisting of a camera behind the windshield and navigation maps - Early detection of speed limits and display of speed restrictions and their cancellation in the driver display and the optionally available head-up display - Visual and optionally acoustic warning when the speed limit is exceeded - Can detect no-entry signs, providing a visual and acoustic warning)

#### Brief expert findings

Documents submitted	At the time of the inspection, the registration certificate Part 2 (letter) was available, but the registration certificate Part 1 (certificate) was not. (Copy)
VIN comparison	The vehicle identification number (VIN) was read and the undersigned verified that it matched the documents submitted during the inspection.
Inspection	The inspection conditions were sufficient for the assessment of the vehicle. Lifting equipment and a pit were available for examining the vehicle.
Test drive	A short maneuvering and shunting trip was carried out on the company premises.
Engine function test	An engine test run was performed.
Driving readiness	The vehicle was drivable at the time of inspection.

#### Value reducing factors

No.	Component group	Description
1	Front bumper	Front bumper - Scratched - Smart repair



## Wear and tear

No.	Component group	Description
1	Equipment	Vehicle key with remote control - Scratch(es) - No deduction
2	2nd wheel set	1 tyre (Kein Teil der Ausstattung) - Damaged - No deduction
3	2nd wheel set	2 alloy rims (Kein Teil der Ausstattung) - Scratched - No deduction
4	Door - front left side	Door edge - Scratch(es) - No deduction

The vehicle shows signs of wear commensurate with its age and use.

## Previous damages

No.	Previous damage	Extent of damage (Net)
1	Front, Provided by user / customer, from 6 Dec 2024	3.410,30 €

## Order/Scope of order

The order was placed to prepare a sales report for the vehicle described. This includes the following:

- Description of core relevant information about the vehicle
- Documentation of equipment features  
(Delivery by third-party service providers)
- Documentation of damage, defects, missing parts
- Documentation of previous damage, unrepaired previous damage, repainting
- a brief visual or functional inspection of the equipment details if possible.  
(Functional tests of driver assistance systems are not included in the scope of services!)
- a photo documentation of the vehicle

## Basis for the order

This product is based on the Alphabet Fuhrpark GmbH guidelines for vehicle returns and valuations. The expert makes the explicit findings in each individual case objectively within the framework of the specified standards based on his or her own expertise.

The vehicle inspection takes place in a disassembled state.

Damage or defects that can only be detected during disassembly/diagnosis work or through advanced knowledge remain within the scope of the prognosis risk. An extended risk exists for concealed defects caused by fraudulent deception and not identifiable by the expert.

Damage or defects resulting from normal use or wear and tear of the vehicle will be accepted according to the applicable standard.

There was no explicit identification or monetary consideration of the expected features within the product.

Features which in their nature and severity slightly exceed normal use but do not constitute unacceptable damage will be documented and identified under signs of use if necessary.

Damage or defects which, according to the underlying standard, can no longer be attributed to normal use or wear and tear are listed in the product under "Depreciating Factors".

Depending on the product specification, a monetary ID can be provided. If this takes place, the costs can be 100% d or pro rata depending on the vehicle's age and mileage.

## Previous damages

According to available information previous damages were repaired at the vehicle. Traces of repairs, which allow conclusions about the area of repair, were not recognizable during the inspection.

## Comments

- Winterradsatz ist kein Bestandteil des Auslieferungsumfangs.





Figure 1: Diagonal front (left)



Figure 2: Diagonal front (right)



Figure 3: Diagonal rear (left)



Figure 4: Diagonal rear (right)



Figure 5: Interior - front



Figure 6: Interior - rear





Figure 7: Instrument cluster



Figure 8: Instrument panel



Figure 9: interior 360° view



Figure 10: Cargo area



Figure 11: VIN



Figure 12: Mounted tyres





Figure 13: Documents



Figure 14: Documents



Figure 15: Documents



Figure 16: Additional tyres



Figure 17: Navigation



Figure 18: Misc.





Figure 19: Misc.



Figure 20: Misc.



Figure 21: Misc.



Figure 22: Misc.



Figure 23: Misc.

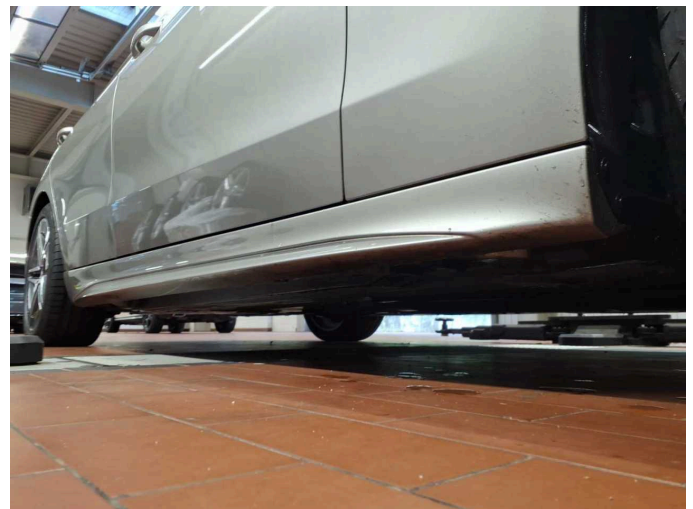


Figure 24: Misc.





Figure 25: Misc.



Figure 26: Misc.



Figure 27: Misc.

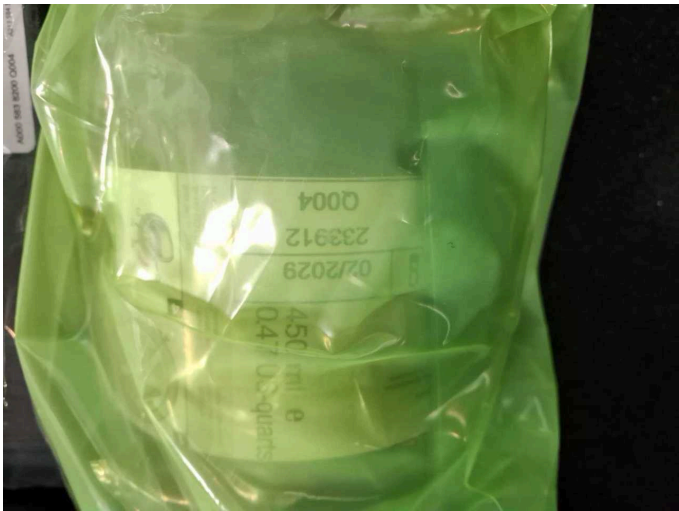


Figure 28: Misc.



Figure 29: Misc.

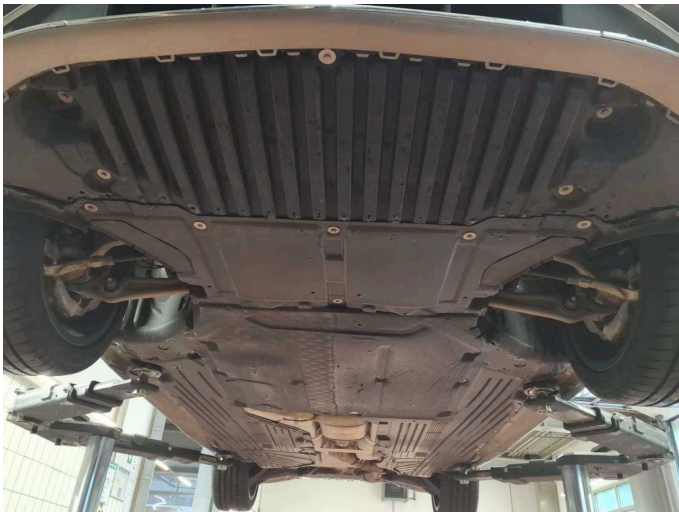


Figure 30: Misc.





Figure 31: Misc.



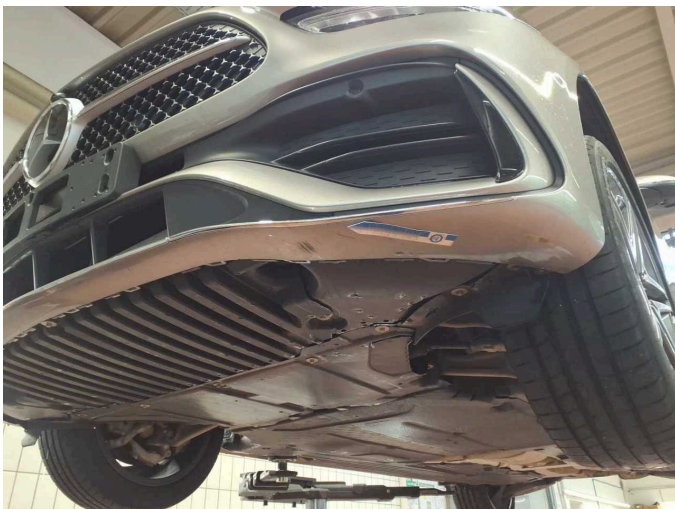
Figure 32: Misc.



Damage 1: Front bumper: Front bumper - Scratched - Smart repair



Damage 1: Front bumper: Front bumper - Scratched - Smart repair



Damage 1: Front bumper: Front bumper - Scratched - Smart repair



Damage 1: Front bumper: Front bumper - Scratched - Smart repair



**Damage 1:** Front bumper: Front bumper - Scratched - Smart repair



# Wartungshistorie

(gemäß Auftraggeber Informationen)

Fahrgestellnummer: W1KAH0GBXRF147656

Hersteller / Modell: MERCEDES-BENZ MB C 300 d T 9G-TRONIC AMG Line

Datum	KM-Stand	Beschreibung
20.03.2025	23.816	Regelwartungsdienst