



Expertise

Protocol number: 41571403
Order No. / Reference: 25198048
Inspection date: 16 Sept 2025

Manufacturer: Mercedes-Benz
VIN: W1KAH0EB9PF074201

Model: C 220 d T 9G-TRONIC Avantgarde



Vehicle details	
Manufacturer / Type / Model / Equipment	
Mercedes-Benz C 220 d T 9G-TRONIC Avantgarde	
Vehicle Identification number	W1KAH0EB9PF074201
Mileage (Read)	91,057 km
First registration	13 Oct 2022
Number of holders	1
Power / Engine displacement	147 kw / 1,993 ccm
Fuel type / Cylinder	Hybrid Diesel / E / 4
Gearbox / Number of gears	Automatic / 9
Type of drive	Rear drive
Type of vehicle	Station wagon
Colour / colour code	SCHWARZ - UNILACK
Doors / Seats	5 / 5
Upholstery type	Artificial leather
Colour of upholstery	Brown



Vehicle details

Maintenance booklet / proof	digital proof / complete	Next maintenance in	248 Tag(e)
Last maintenance on / at	04/2025 at 76,237 km		
Key is / should be	2 / 2	FZG documents	ZB#2 (B) was available (copy), ZB#1 (S) was not available
		Letter No.	GM930542
Previous damage / Accident	None detectable	Repainting	None detectable
Inspection conditions	sufficient	Lifting equipment / pit	yes
Test drive	Not performed	Engine function test	Performed
Manufacturer key number/ type code number	2222 / AYH 00223		
Emission standard	EURO6;WLTP;AP;PI/CI; M, N1 I	Fine dust sticker	
Permitted total weight	2,400 kg	Empty weight	

Tyres

Mounted tyres

#	Tyre size	Type of tyre	Manufacturer	Tread depth
1)	225/50 R17 94Y	Summer tyres on Light alloy	Bridgestone	3mm / 3mm
2)	225/50 R17 94Y	Summer tyres on Light alloy	Bridgestone	3mm / 3mm

Additional tyres

#	Tyre size	Type of tyre	Manufacturer	Tread depth
1)	225/50 R17 98V	Winter tyres (Without wheel rim)	Michelin	5mm / 5mm
2)	225/50 R17 98V	Winter tyres (Without wheel rim)	Michelin	5mm / 5mm

Legend: Tread depth information for tires on the left is in the first place, for tires on the right is in the second place on the axle in the direction of travel

Equipment

Standard equipment

- Airbag for driver and front passenger
- Airbag: Center airbag
- Airbag: Windowbag for driver and front passenger
- Exterior mirrors left and right heated and electrically adjustable
- Roof rails in polished aluminum
- Double cup holders at the front
- EASY-PACK tailgate
- Electronic Stability Program (ESP)
- Velour floor mats
- Transmission: Automatic 9-speed, 9G-TRONIC
- Rear bumper in body color
- Interior headliner fabric crystal grey
- KEYLESS-GO start function
- Rear headrests (3)
- Paint finish: Uni
- LED high-performance headlights
- Mercedes-Benz emergency call system
- Center console in high-gloss black
- Package: AVANTGARDE Exterior
- Upholstery: ARTICO imitation leather/fabric
- Radio: MBUX
- Radio accessories: Communication module (LTE) for the use of Mercedes me connect services
- Remote Services Plus
- Power steering
- Lane Keeping Assist, active
- High-visibility vest for drivers
- Central locking with remote control

Extra equipment

- Ambient lighting with 64 light colors (with directly illuminated light lines.)
- Center console diamond look silver gray
- Package: Advanced Comfort Package
- Package: Advanced Parking Package (12 ultrasonic sensors - 360° camera - Active Parking Assist with PARKTRONIC: detects free parking spaces, assisted parking, visual and acoustic warnings, display of camera and ultrasonic data on the media display - Cross-traffic warning: can provide a visual and acoustic warning when cross-traffic is detected while reversing out of a parking space and, if necessary, automatically initiate emergency braking - Reverse maneuvering braking: can trigger a braking action - Drive-away assistance)

- Airbag: Automatic passenger airbag deactivation
- Airbag: Sidebag for driver and front passenger
- Ambient lighting with 64 light colors
- Basic services
- Brake assist, active
- diesel particulate filter
- DYNAMIC SELECT
- ECO start-stop function
- 4-way electric window lifter
- Speed Limit Assistant
- Rear window wiper
- Heated rear window
- ISOFIX child seat attachment with Top Tether in the rear
- Mechanical child safety lock for the rear doors
- Front headrests
- Load compartment cover including EASY-PACK safety net
- Steering wheel: Multifunction sports steering wheel in leather
- Package: Storage
- Package: Interior lighting package
- Radio: Advanced functions MBUX
- Radio accessories: Digital radio (DAB)
- Radio accessories: Central display
- Tire pressure monitoring (TPMS)
- Windscreen wipers with rain sensor
- Seats: Folding seat backrests in the rear
- Cruise control
- Electronic immobilizer
- Decorative elements diamond look silver-grey

- Head-up display
- THERMATIC automatic climate control with 2 climate zones (controlled via the central display or the climate control unit in the center console; sensor system for recording, for example, interior/ outside temperature, sunlight, humidity, and dew point; automatic air recirculation (only in conjunction with navigation system); ventilation system consisting of: 3 center vents in the center level and 2 side vents; fine dust activated carbon filter for filtering dust, soot, and pollen; dew point sensor; residual heat function for efficient use of engine waste heat)



- Package: High-End Business (Mirror package: Electric folding exterior mirrors, automatic dimming, ambient lighting - Advanced Comfort package: Heated seats for driver/front passenger, 4-way lumbar support, seat comfort package - Parking package: with rear view camera - Assistance package: Blind spot assistant - Advanced Infotainment package: MBUX Navigation Premium, traffic sign assistant, smartphone integration, driver display - 31.2 cm (12.3"), central display - 30.2 cm (11.9") touch display, LCD - fuel tank with large capacity)
- Package: High-End Lighting Package (DIGITAL LIGHT with projection function: -HD system with projection module -DIGITAL LIGHT projection functions: projection function for lines, symbols, animations -ULTRA RANGE high beam with a range of more than 600 m -Topography compensation -Cornering light with roundabout and intersection function -Active cornering light with predictive control -Extended fog light, city light, country road light, motorway light, motorway high beam and bad weather light)
- Package: Night (for T-model with Avantgarde exterior) (Radiator grille: slats in high-gloss black and decorative trim in high-gloss chrome (17") light alloy wheels in 5-spoke design, black lacquered and high-sheen with 225/50 R17 on 7Jx17 ET44, 5 front apron with decorative trim (wing) in high-gloss black, rear bumper with decorative trim (wing) in high-gloss black, beltline trim strip and window surround in high-gloss black, exterior mirror housings painted in high-gloss black, heat-insulating dark-tinted glass at the rear (from B-pillar), roof rails in black.)
- Auxiliary heating (including auxiliary ventilation and remote control)
- Heat-insulating dark tinted glass
- Package: Driver Assistance (Active Distance Assist, DISTRONIC, Active Speed Limit Assist, Advanced Auto Restart on Motorways, Route-Based Speed Adaptation with End-of-Traffic Jam Assist, Active Traffic Jam Assist, Active Steering Assist, Active Lane Change Assist, Active Emergency Stop Assist, Emergency Lane Function, Active Brake Assist with Vehicle, Bicycle, and Pedestrian Detection; Intersection Function, Turning Function, End-of-Traffic Jam Emergency Braking Function, Evasive Steering Assist, Active Lane Keeping Assist, Active Blind Spot Assist, Exit Warning Function)
- Package: High-end infotainment package (MBUX Navigation Premium (hard drive navigation, pre-installation for Live Traffic Information), Traffic Sign Assistant, Smartphone Integration (connects the mobile phone wirelessly to the multimedia system via Apple CarPlay and Android Auto), Driver display - 31.2 cm (12.3") large LCD color display, Central display - 30.2 cm (11.9"), touch display, MBUX Augmented Reality for navigation.)
- Package: Trunk Comfort (rear seat backrests electrically foldable via switches on the right and left in the control panel in the cargo area - Electric opening and closing of the cargo blind - 12 V socket on the left in the control panel in the cargo area - Reversible mat with one rubberized, non-slip side and one soft velour side)
- Upholstery: ARTICO two-tone man-made leather (including black fabric roof lining)
- Radio accessories: Advanced sound system (with 9 speakers and 225 watts of system power)
- Wheels: 43.2 cm (17") light alloy wheels in 5-spoke design
- Seats: Comfort seats
- Extendable sun visors (with illuminated cosmetic mirror and side-swivelling and extendable)
- Heat and noise-insulating acoustic glass (for windshield and front doors)

Brief expert findings

Documents submitted	At the time of the inspection, the registration certificate Part 2 (letter) was available, but the registration certificate Part 1 (certificate) was not. (Copy)
VIN comparison	The vehicle identification number (VIN) was read from the vehicle and its conformity with the submitted documents was verified during the inspection by the undersigned.
Inspection	The inspection conditions were sufficient for the assessment of the vehicle. Lifting equipment and a pit were available for examining the vehicle.
Test drive	No test drive/maneuvering was carried out during the inspection of the vehicle.
Engine function test	An engine test run was performed.

Value reducing factors

No.	Component group	Description
1	Wheel / tyres	Alloy rim - rear right side - Scratch(es) - Loss in value
2	Wheel / tyres	Alloy rim - rear left side - Scratch(es) - Loss in value
3	Front bumper	Front bumper - Scratch(es) - Repair and paint

Wear and tear



No.	Component group	Description
1	Vehicle glazing	Windscreen - Stone chips - No deduction
2	Bonnet	Bonnet - Stone chips - No deduction
3	Rear bumper	Spoiler - Scratch(es) - No deduction
4	Body	Body - Scratch(es) - No deduction
5	Door - front left side	Door - Scratch(es) - No deduction

The vehicle shows signs of wear commensurate with its age and use.

Order/Scope of order

The order was placed to prepare a sales report for the vehicle described. This includes the following:

- Description of core relevant information about the vehicle
- Documentation of equipment features
(*Delivery by third-party service providers*)
- Documentation of damage, defects, missing parts
- Documentation of previous damage, unrepaired previous damage, repainting
- a brief visual or functional inspection of the equipment details if possible.
(*Functional tests of driver assistance systems are not included in the scope of services!*)
- a photo documentation of the vehicle

Basis for the order

This product is based on the Alphabet Fuhrpark GmbH guidelines for vehicle returns and valuations. The expert makes the explicit findings in each individual case objectively within the framework of the specified standards based on his or her own expertise.

The vehicle inspection takes place in a disassembled state.

Damage or defects that can only be detected during disassembly/diagnosis work or through advanced knowledge remain within the scope of the prognosis risk. An extended risk exists for concealed defects caused by fraudulent deception and not identifiable by the expert.

Damage or defects resulting from normal use or wear and tear of the vehicle will be accepted according to the applicable standard.

There was no explicit identification or monetary consideration of the expected features within the product.

Features which in their nature and severity slightly exceed normal use but do not constitute unacceptable damage will be documented and identified under signs of use if necessary.

Damage or defects which, according to the underlying standard, can no longer be attributed to normal use or wear and tear are listed in the product under "Depreciating Factors".

Depending on the product specification, a monetary ID can be provided. If this takes place, the costs can be 100% d or pro rata depending on the vehicle's age and mileage.

Previous damages

Apparently, no repaired previous damage could be found on the vehicle.

Comments

- Winterreifensatz ist kein Bestandteil des Auslieferungsumfangs.



Figure 1: Diagonal front (left)



Figure 2: Diagonal front (right)



Figure 3: Diagonal rear (left)



Figure 4: Diagonal rear (right)



Figure 5: Interior - front



Figure 6: Interior - rear



Figure 7: Instrument cluster



Figure 8: Instrument panel



Figure 9: Interior 360° view



Figure 10: Cargo area



Figure 11: VIN



Figure 12: Mounted tyres

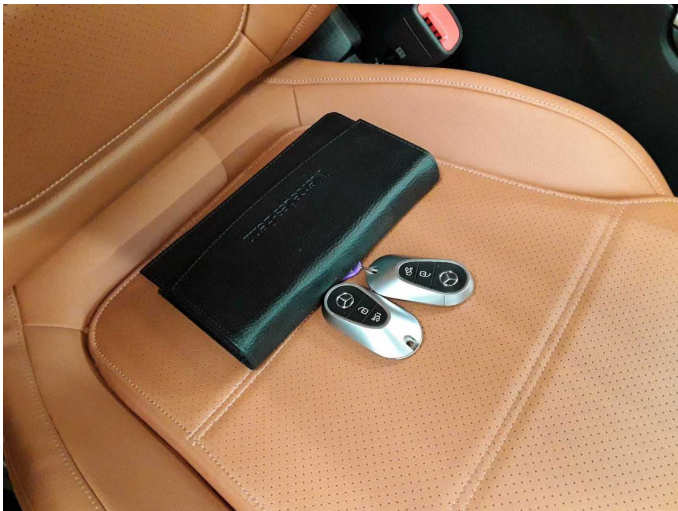


Figure 13: Documents

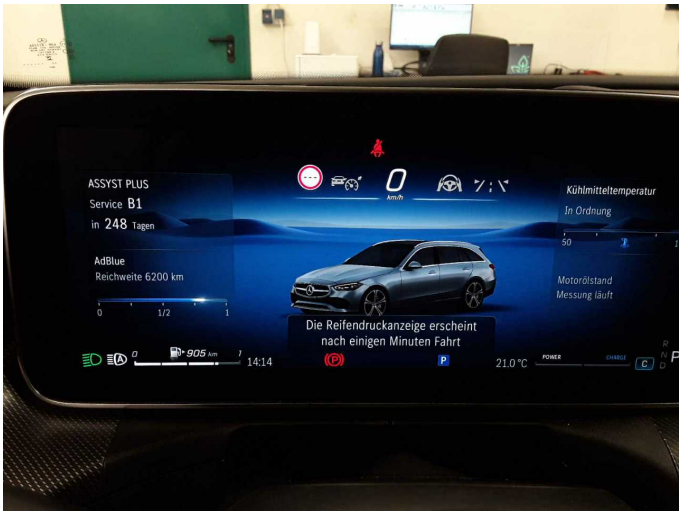


Figure 14: Documents



Figure 15: Additional tyres



Figure 16: Navigation



Figure 17: Misc.



Figure 18: Misc.



Figure 19: Misc.



Figure 20: Misc.



Figure 21: Misc.



Damage 1: Wheel / tyres: Alloy rim - rear right side - Scratch(es) - Loss in value



Damage 1: Wheel / tyres: Alloy rim - rear right side - Scratch(es) - Loss in value



Damage 1: Wheel / tyres: Alloy rim - rear right side - Scratch(es) - Loss in value



Damage 2: Wheel / tyres: Alloy rim - rear left side - Scratch(es) - Loss in value



Damage 2: Wheel / tyres: Alloy rim - rear left side - Scratch(es) - Loss in value



Damage 3: Front bumper: Front bumper - Scratch(es) - Repair and paint



Damage 3: Front bumper: Front bumper - Scratch(es) - Repair and paint



Damage 3: Front bumper: Front bumper - Scratch(es) - Repair and paint



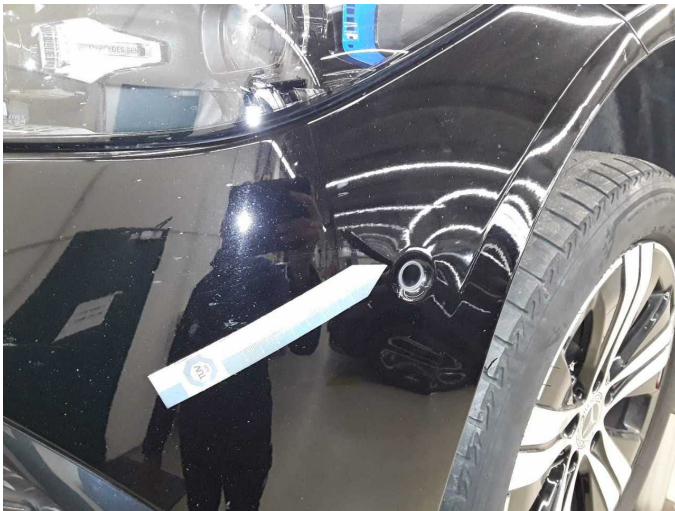
Damage 3: Front bumper: Front bumper - Scratch(es) - Repair and paint



Damage 3: Front bumper: Front bumper - Scratch(es) - Repair and paint



Damage 3: Front bumper: Front bumper - Scratch(es) - Repair and paint



Damage 3: Front bumper: Front bumper - Scratch(es) - Repair and paint



Damage 3: Front bumper: Front bumper - Scratch(es) - Repair and paint



Wear and tear 3: Rear bumper: Spoiler - Scratch(es) - No deduction



Wear and tear 3: Rear bumper: Spoiler - Scratch(es) - No deduction



Wartungshistorie

(gemäß Auftraggeber Informationen)

Fahrgestellnummer: W1KAH0EB9PF074201

Hersteller / Modell: MERCEDES-BENZ MB C 220 d T 9G-TRONIC Avantgarde

Datum	KM-Stand	Beschreibung
17.04.2025	76.237	Regelwartungsdienst
21.05.2024	53.372	Regelwartungsdienst
15.06.2023	26.333	Regelwartungsdienst