



Expertise

Protocol number: 41427266
Order No. / Reference: 25196544
Inspection date: 9 Sept 2025

Manufacturer: Mercedes-Benz

Model: C 220 d T 9G-TRONIC Avantgarde

VIN: W1KAH0EB6PF069926



Vehicle details	
Manufacturer / Type / Model / Equipment	
Mercedes-Benz C 220 d T 9G-TRONIC Avantgarde	
Vehicle Identification number	W1KAH0EB6PF069926
Mileage (Read)	98,359 km
First registration	30 Aug 2022
Number of holders	1
Next periodical technical inspection	08/2025
(Report not on hand)	
Power / Engine displacement	147 kw / 1,993 ccm
Fuel type / Cylinder	Hybrid Diesel / E / 4
Gearbox / Number of gears	Automatic / 9
Type of drive	Rear drive
Type of vehicle	Station wagon
Colour / colour code	SELENITGRAU - METALLIKLACK
Doors / Seats	5 / 5
Upholstery type	Cloth
Colour of upholstery	Black-Grey
Re/Import	no
Vehicle with smoke odor	no
Driving readiness	Roadworthy



Vehicle details

Maintenance booklet / proof	digital proof / complete	Next maintenance in	170 Tag(e)
Last maintenance on / at	01/2025 at 79,013 km		
Key is / should be	2 / 2	FZG documents	ZB#2 (B) was available (copy), ZB#1 (S) was not available
		Letter No.	GJ509454
Previous damage / Accident	None detectable	Repainting	None detectable
Inspection conditions	sufficient	Lifting equipment / pit	yes
Test drive	Not performed	Engine function test	Performed
Driving readiness	Roadworthy		
Manufacturer key number/ type code number	2222 / AYH 00223		
Emission standard	EURO6;WLTP;AP;PI/CI; M, N1 I	Fine dust sticker	
Permitted total weight	2,400 kg	Empty weight	

Tyres

Mounted tyres

#	Tyre size	Type of tyre	Manufacturer	Tread depth
1)	225/45 R18 95Y	Winter tyres on Light alloy	Dunlop	8mm / 8mm
2)	225/45 R18 95V	Winter tyres on Light alloy	Dunlop	7mm / 7mm

Additional tyres

#	Tyre size	Type of tyre	Manufacturer	Tread depth
1)	225/45 R18 95Y	Summer tyres on Light alloy	Goodyear	5mm / 5mm
2)	245/40 R18 97Y	Summer tyres on Light alloy	Goodyear	3mm / 3mm

Legend: Tread depth information for tires on the left is in the first place, for tires on the right is in the second place on the axle in the direction of travel

Equipment

Standard equipment

- Airbag for driver and front passenger
- Airbag: Center airbag
- Airbag: Windowbag for driver and front passenger
- Exterior mirrors left and right heated and electrically adjustable
- Roof rails in polished aluminum
- Double cup holders at the front
- EASY-PACK tailgate
- Electronic Stability Program (ESP)
- Velour floor mats
- Transmission: Automatic 9-speed, 9G-TRONIC
- Rear bumper in body color
- Interior headliner fabric crystal grey
- KEYLESS-GO start function
- Rear headrests (3)
- Load compartment cover including EASY-PACK safety net
- Mercedes-Benz emergency call system
- Center console in high-gloss black
- Package: AVANTGARDE Exterior (radiator grille with integrated Mercedes star and chrome-plated louvre, chrome radiator grille frame, 43.2 cm (17") 5-spoke alloy wheels, high-gloss black paint and high-gloss rims, 225/50 R 17 on 7 J x 17 ET 44.5, dynamic front bumper with centrally positioned decorative trim in high-gloss chrome and diamond-pattern air intakes in black, AGILITY CONTROL suspension with 15 mm lowering and selective damping system, bar on the rear side windows in high-gloss black)
- Radio accessories: Digital radio (DAB)
- Radio accessories: Communication module (LTE) for the use of Mercedes me connect services
- Tire pressure monitoring (TPMS)
- Remote Services Plus
- Windscreen wipers with rain sensor
- Power steering
- Seats: Folding seat backrests in the rear
- Lane Keeping Assist, active
- High-visibility vest for drivers
- Central locking with remote control
- Airbag: Automatic passenger airbag deactivation
- Airbag: Sidebag for driver and front passenger
- Ambient lighting with 64 light colors
- Basic services
- Brake assist, active
- diesel particulate filter
- DYNAMIC SELECT
- ECO start-stop function
- 4-way electric window lifter
- Speed Limit Assistant
- Rear window wiper
- Heated rear window
- ISOFIX child seat attachment with Top Tether in the rear
- Mechanical child safety lock for the rear doors
- Front headrests
- Steering wheel: Multifunction sports steering wheel in leather
- Package: Storage (storage compartment with net on the left side of the cargo area - double cup holder in the center console for 2 x 750 ml - rubber strap on the right side of the cargo area - folding box under the cargo floor - 1 additional bag hook on the right side of the cargo area - recess including storage tray on the right side of the cargo area - map pockets on the backs of the front seats - reversible mat in the trunk floor)
- Package: Interior Lighting Package (Illuminated glove compartment - Illumination of the Wireless Mobile Interface or the storage compartment for mobile phones - Illumination of the storage compartment in the center console or the double cup holders - Illumination of the storage compartment under the center console armrest - Two vanity lights in front - Two reading lights in the overhead control panel - Two reading lights in the interior mirror in conjunction with the mirror P - Two reading lights and interior light function in the grab handles in the rear - Illumination of the trunk or cargo area)
- Cruise control
- Electronic immobilizer
- Decorative elements diamond look silver-grey

Extra equipment

- Trailer hitch with ESP trailer stabilization
- Paint finish: metallic
- Package: Advanced Infotainment Package (MBUX Navigation Premium (hard drive navigation, preparation for Live Traffic Information) Traffic Sign Assistant Smartphone Integration (connects the mobile phone wirelessly to the multimedia system via Apple CarPlay and Android Auto) Driver Display - 31.2 cm (12.3") large LCD color display Central Display - 30.2 cm (11.9"), touch display with LCD technology)
- THERMATIC automatic climate control with 2 climate zones (controlled via the central display or the climate control unit in the center console; sensor system for recording, for example, interior/outside temperature, sunlight, humidity, and dew point; automatic air recirculation (only in conjunction with navigation system); ventilation system consisting of: 3 center vents in the center level and 2 side vents; fine dust activated carbon filter for filtering dust, soot, and pollen; dew point sensor; residual heat function for efficient use of engine waste heat)



- Package: Advanced Comfort Package (Seat heating for driver and front passenger - Seat Comfort Package: -Various electric and manual adjustment options for the front seats to adapt to the specific body and comfort requirements of the driver and front passenger - Electro-pneumatic 4-way lumbar support and lateral support adjustment with seat controls -Electric seat cushion tilt adjustment - Electric height adjustment -Electric backrest adjustment -Electric seat cushion depth adjustment -Mechanical fore/aft adjustment - Mechanical headrest adjustment)
- Package: Business (for Avantgarde Exterior (P15) or AMG Line Exterior (P31)) (Mirror Package: Electrically folding exterior mirrors, automatic dimming function, ambient lighting - with projection of the Mercedes-Benz logo - Advanced Comfort Package: Seat heating for driver and front passenger, 4-way lumbar support, Seat Comfort Package - Parking Package: Parking package with rearview camera - Infotainment Package: MBUX Navigation Premium, Traffic Sign Assistant, Smartphone Integration - Fuel tank with larger capacity)
- Package: Trunk Comfort (rear seat backrests electrically foldable via switches on the right and left in the control panel in the cargo area - Electric opening and closing of the cargo blind - 12 V socket on the left in the control panel in the cargo area - Reversible mat with one rubberized, non-slip side and one soft velour side)
- Wheels: 45.7 cm (18") light alloy wheels in 5-spoke design (high-sheen finish with front: 225/45 R 18 on 7.5 J x 18 ET 40 rear: 245/40 R 18 on 8.5 J x 18 ET 52)
- Auxiliary heating (including auxiliary ventilation and remote control)
- Elimination of type markings on trunk lid
- Heat-insulating dark tinted glass
- Package: Advanced Lighting Package (DIGITAL LIGHT: -HD system with projection module (more than 1.3 million pixels per headlight) and background module MULTIBEAM LED -Adaptive Highbeam Assist Plus -ULTRA RANGE high beam with a range of more than 600 m -Topography compensation -Cornering light with roundabout and intersection function -Active cornering light with predictive control -Extended fog light, city light, country road light, motorway light, motorway high beam and bad weather light)
- Package: Driver Assistance (Active Distance Assist, DISTRONIC, Active Speed Limit Assist, Advanced Auto Restart on Motorways, Route-Based Speed Adaptation with End-of-Traffic Jam Assist, Active Traffic Jam Assist, Active Steering Assist, Active Lane Change Assist, Active Emergency Stop Assist, Emergency Lane Function, Active Brake Assist with Vehicle, Bicycle, and Pedestrian Detection; Intersection Function, Turning Function, End-of-Traffic Jam Emergency Braking Function, Evasive Steering Assist, Active Lane Keeping Assist, Active Blind Spot Assist, Exit Warning Function)
- Package: Park (12 ultrasonic sensors - Rear view camera - Active Parking Assist with PARKTRONIC: detects free parking spaces, assisted parking, visual and acoustic warnings, display of camera and ultrasonic data on the media display - Cross traffic warning: can provide a visual and acoustic warning when cross traffic is detected while reversing out of a parking space and, if necessary, automatically initiate emergency braking - Reverse maneuvering braking: can trigger a braking action - Drive-away assistance)
- Heat and noise-insulating acoustic glass (for windshield and front doors)

Brief expert findings

Documents submitted	At the time of the inspection, the registration certificate Part 2 (letter) was available, but the registration certificate Part 1 (certificate) was not. (Copy)
VIN comparison	The vehicle identification number (VIN) was read from the vehicle and its conformity with the submitted documents was verified during the inspection by the undersigned.
Inspection	The inspection conditions were sufficient for the assessment of the vehicle. Lifting equipment and a pit were available for examining the vehicle.
Test drive	No test drive/maneuvering was carried out during the inspection of the vehicle.
Engine function test	An engine test run was performed.
Driving readiness	The vehicle was drivable at the time of inspection.

Value reducing factors

No.	Component group	Description
1	Door - rear right side	Door - dent(s) - Smart repair
2	Boot lid / rear door	Boot lid glazed - dent(s) - Smart repair
3	Door - front left side	Door - dent(s) - Smart repair
4	Trim / covers	Brightware / decorative strip (Stoßfänger hinten) - Damaged - Replace
5	Sill - right side	Trim - Scratch(es) - Paint
6	Door - front right side	Door - Scratch(es) - Paint



No.	Component group	Description
7	2nd wheel set	1 alloy rim - Damaged - Replace
8	Side panel - rear left side	Side panel - Dent / paintcoat damage - Repair and paint
9	Rear bumper	Rear bumper - Scratch(es) - Paint
10	Front bumper	Front bumper - Scratch(es) - Paint
11	Headlight	LED headlight left - Scratch(es) - Replace

Wear and tear

No.	Component group	Description
1	Side panel - rear right side	Side panel - Dent / paintcoat damage - No deduction
2	Wheel / tyres	Alloy rim - front left side - Scratched - No deduction
3	Wheel / tyres	Alloy rim - front right side - Scratched - No deduction
4	Wheel / tyres	Alloy rim - rear right side - Damaged - No deduction
5	Wheel / tyres	Alloy rim - rear left side - Damaged - No deduction

The vehicle shows signs of wear commensurate with its age and use.

Order/Scope of order

The order was placed to prepare a sales report for the vehicle described. This includes the following:

- Description of core relevant information about the vehicle
- Documentation of equipment features
(*Delivery by third-party service providers*)
- Documentation of damage, defects, missing parts
- Documentation of previous damage, unrepaired previous damage, repainting
- a brief visual or functional inspection of the equipment details if possible.
(*Functional tests of driver assistance systems are not included in the scope of services!*)
- a photo documentation of the vehicle

Basis for the order

This product is based on the Alphabet Fuhrpark GmbH guidelines for vehicle returns and valuations. The expert makes the explicit findings in each individual case objectively within the framework of the specified standards based on his or her own expertise.

The vehicle inspection takes place in a disassembled state.

Damage or defects that can only be detected during disassembly/diagnosis work or through advanced knowledge remain within the scope of the prognosis risk. An extended risk exists for concealed defects caused by fraudulent deception and not identifiable by the expert.

Damage or defects resulting from normal use or wear and tear of the vehicle will be accepted according to the applicable standard.

There was no explicit identification or monetary consideration of the expected features within the product.

Features which in their nature and severity slightly exceed normal use but do not constitute unacceptable damage will be documented and identified under signs of use if necessary.

Damage or defects which, according to the underlying standard, can no longer be attributed to normal use or wear and tear are listed in the product under "Depreciating Factors".

Depending on the product specification, a monetary ID can be provided. If this takes place, the costs can be 100% d or pro rata depending on the vehicle's age and mileage.

Previous damages

Apparently, no repaired previous damage could be found on the vehicle.



Comments

- Für den montierten Radsatz wurde kein Nachweis erbracht.
- Winterradsatz ist kein Bestandteil des Auslieferungsumfangs.



Figure 1: Diagonal front (left)



Figure 2: Diagonal front (right)



Figure 3: Diagonal rear (left)



Figure 4: Diagonal rear (right)



Figure 5: Interior - front



Figure 6: Interior - rear



Figure 7: Instrument cluster



Figure 8: Instrument panel



Figure 9: Interior 360° view



Figure 10: Cargo area



Figure 11: VIN



Figure 12: Mounted tyres



Figure 13: Documents



Figure 14: Documents

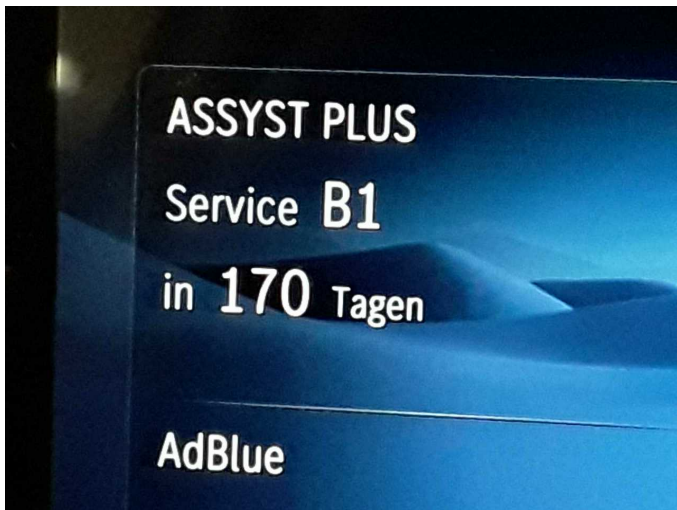


Figure 15: Documents



Figure 16: Additional tyres

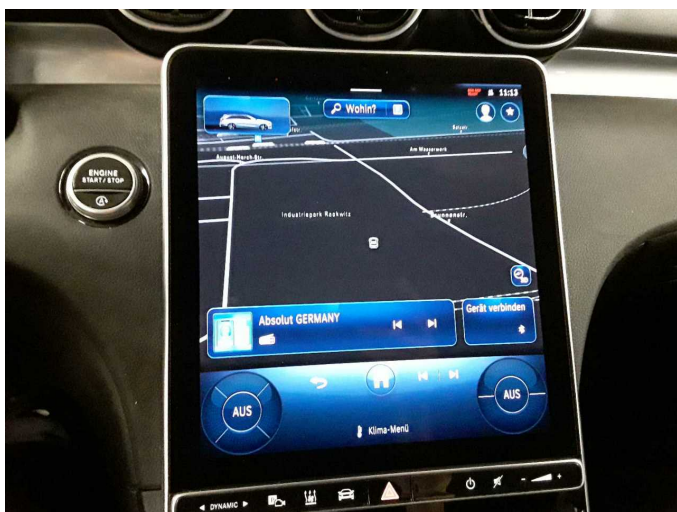


Figure 17: Navigation



Figure 18: Misc.



Figure 19: Misc.



Figure 20: Misc.

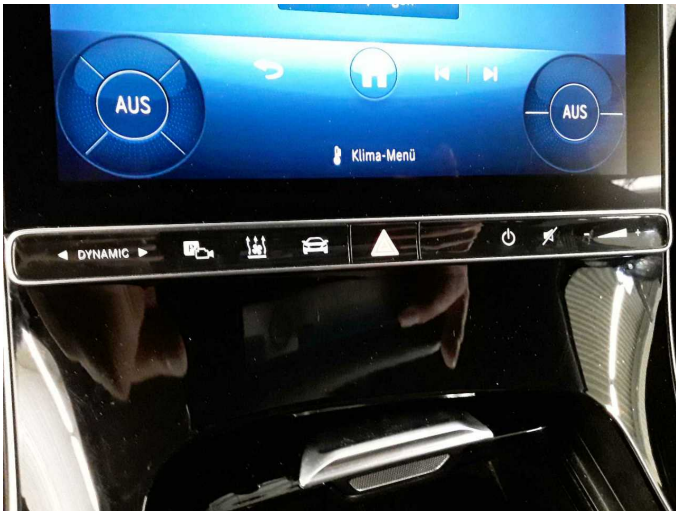


Figure 21: Misc.



Figure 22: Misc.



Figure 23: Misc.



Figure 24: Misc.

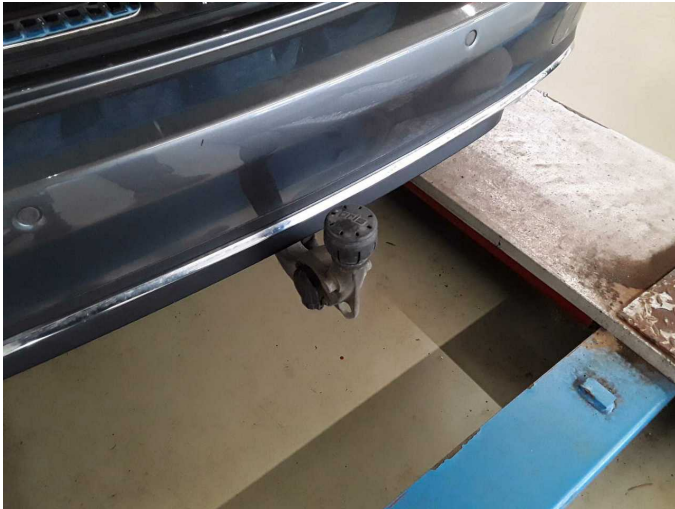


Figure 25: Misc.



Figure 26: Misc.



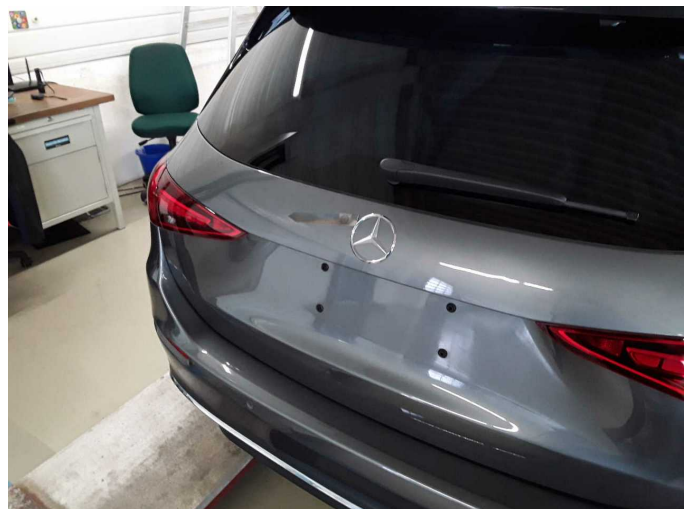
Figure 27: Misc.



Damage 1: Door - rear right side: Door - dent(s) - Smart repair



Damage 1: Door - rear right side: Door - dent(s) - Smart repair



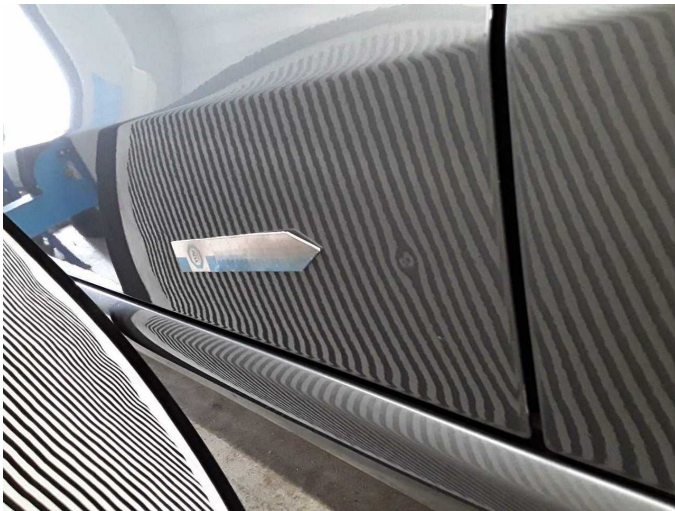
Damage 2: Boot lid / rear door: Boot lid glazed - dent(s) - Smart repair



Damage 2: Boot lid / rear door: Boot lid glazed - dent(s) - Smart repair



Damage 3: Door - front left side: Door - dent(s) - Smart repair



Damage 3: Door - front left side: Door - dent(s) - Smart repair



Damage 4: Trim / covers: Brightware / decorative strip (Stoßfänger hinten) - Damaged - Replace



Damage 4: Trim / covers: Brightware / decorative strip (Stoßfänger hinten) - Damaged - Replace



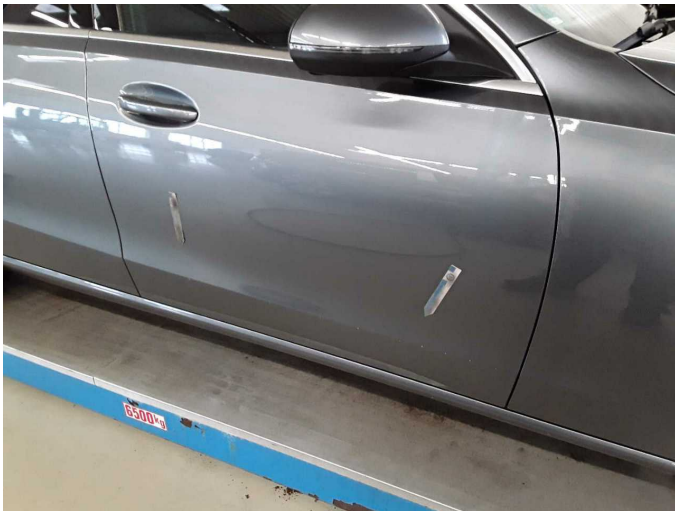
Damage 4: Trim / covers: Brightware / decorative strip (Stoßfänger hinten) - Damaged - Replace



Damage 5: Sill - right side: Trim - Scratch(es) - Paint



Damage 5: Sill - right side: Trim - Scratch(es) - Paint



Damage 6: Door - front right side: Door - Scratch(es) - Paint



Damage 6: Door - front right side: Door - Scratch(es) - Paint



Damage 6: Door - front right side: Door - Scratch(es) - Paint



Damage 6: Door - front right side: Door - Scratch(es) - Paint



Damage 7: 2nd wheel set: 1 alloy rim - Damaged - Replace



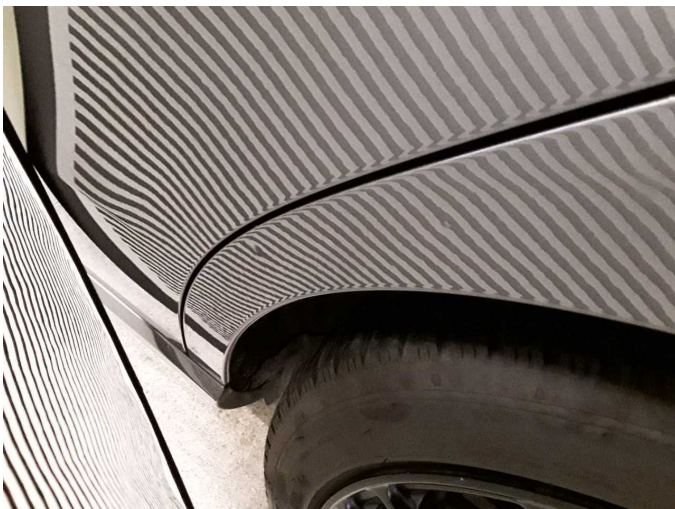
Damage 7: 2nd wheel set: 1 alloy rim - Damaged - Replace



Damage 8: Side panel - rear left side: Side panel - Dent / paintcoat damage - Repair and paint



Damage 8: Side panel - rear left side: Side panel - Dent / paintcoat damage - Repair and paint



Damage 8: Side panel - rear left side: Side panel - Dent / paintcoat damage - Repair and paint



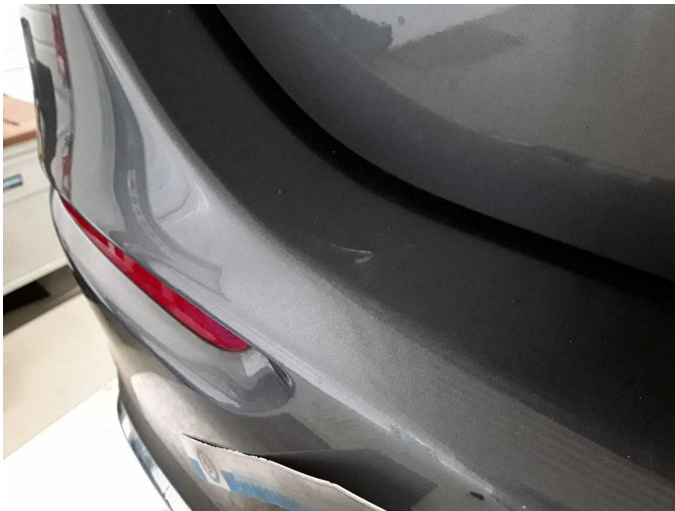
Damage 9: Rear bumper: Rear bumper - Scratch(es) - Paint



Damage 9: Rear bumper: Rear bumper - Scratch(es) - Paint



Damage 9: Rear bumper: Rear bumper - Scratch(es) - Paint



Damage 9: Rear bumper: Rear bumper - Scratch(es) - Paint



Damage 9: Rear bumper: Rear bumper - Scratch(es) - Paint



Damage 10: Front bumper: Front bumper - Scratch(es) - Paint



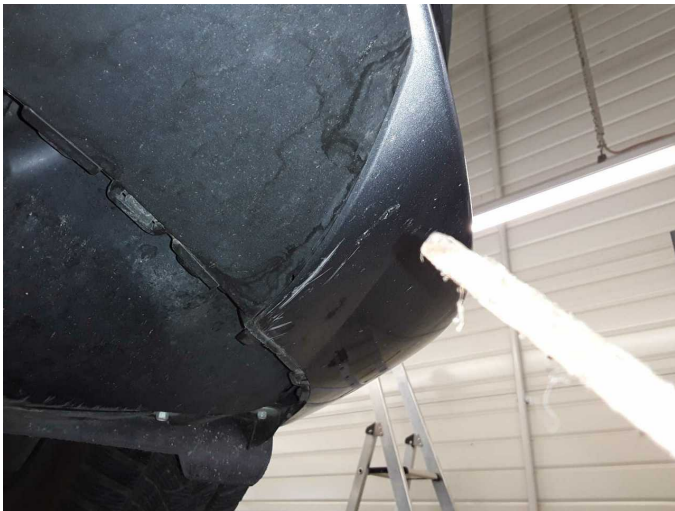
Damage 10: Front bumper: Front bumper - Scratch(es) - Paint



Damage 10: Front bumper: Front bumper - Scratch(es) - Paint



Damage 10: Front bumper: Front bumper - Scratch(es) - Paint



Damage 10: Front bumper: Front bumper - Scratch(es) - Paint



Damage 10: Front bumper: Front bumper - Scratch(es) - Paint



Damage 11: Headlight: LED headlight left - Scratch(es) - Replace



Damage 11: Headlight: LED headlight left - Scratch(es) - Replace



Wartungshistorie

(gemäß Auftraggeber Informationen)

Fahrgestellnummer: W1KAH0EB6PF069926

Hersteller / Modell: MERCEDES-BENZ MB C 220 d T 9G-TRONIC

Datum	KM-Stand	Beschreibung
08.01.2025	79.013	Bremsscheiben hinten; Regelwartungsdienst
04.03.2024	52.248	Regelwartungsdienst
06.04.2023	26.756	Regelwartungsdienst