



Expertise

Protocol number: 41330442
Order No. / Reference: 25071114
Inspection date: 1 Sept 2025

Manufacturer: Mercedes-Benz
VIN: W1KAH0EB1PF114092

Model: C 220 d T 9G-TRONIC AMG Line



Vehicle details	
Manufacturer / Type / Model / Equipment	
Mercedes-Benz C 220 d T 9G-TRONIC AMG Line	
Vehicle Identification number	W1KAH0EB1PF114092
Mileage (Read)	100,311 km
First registration	5 Jun 2023
Number of holders	1
Power / Engine displacement	147 kw / 1,993 ccm
Fuel type / Cylinder	Hybrid Diesel / E / 4
Gearbox / Number of gears	Automatic / 9
Type of drive	Rear drive
Type of vehicle	Station wagon
Colour / colour code	SCHWARZ - UNILACK
Doors / Seats	5 / 5
Upholstery type	Artificial leather
Colour of upholstery	Black-Anthracite



Vehicle details

Maintenance booklet / proof	digital proof / complete	Next maintenance in	1,815 km
Last maintenance on / at	02/2025 at 77,126 km		
Key is / should be	2 / 2	FZG documents	ZB#2 (B) was available (copy), ZB#1 (S) was not available
		Letter No.	GV674245
Previous damage / Accident	Detectable	Repainting	Detectable
Inspection conditions	sufficient	Lifting equipment / pit	yes
Test drive	Not performed	Engine function test	Performed
Manufacturer key number/ type code number	2222 / AYH 00291		
Emission standard	EURO6;WLTP;AP;PI/CI; M, N1 I	Fine dust sticker	
Permitted total weight	2,400 kg	Empty weight	

Tyres

Mounted tyres

#	Tyre size	Type of tyre	Manufacturer	Tread depth
1)	225/45 R18 95Y	Summer tyres on Light alloy	Pirelli	4mm / 4mm
2)	245/40 R18 97Y	Summer tyres on Light alloy	Continental	5mm / 5mm

Additional tyres

#	Tyre size	Type of tyre	Manufacturer	Tread depth
1)	225/45 R18 95V	Winter tyres on Light alloy	Pirelli	4mm / 4mm
2)	225/45 R18 95V	Winter tyres on Light alloy	Pirelli	4mm / 4mm

Legend: Tread depth information for tires on the left is in the first place, for tires on the right is in the second place on the axle in the direction of travel



Equipment

Standard equipment

- | | |
|--|--|
| <ul style="list-style-type: none"> • Airbag for driver and front passenger • Airbag: Center airbag • Airbag: Windowbag for driver and front passenger • AMG floor mats • Exterior mirrors left and right heated and electrically adjustable • Brake system with larger brake discs on the front axle • Roof rails black • Double cup holders at the front • EASY-PACK tailgate • Electronic Stability Program (ESP) • 4-way electric window lifter • Transmission: Automatic 9-speed, 9G-TRONIC • Heated rear window • Instrument panel and beltlines in ARTICO man-made leather in black nappa look • Mechanical child safety lock for the rear doors • Rear headrests (3) • Paint finish: Uni • LED high-performance headlights • Mercedes-Benz emergency call system • Center console in high-gloss black • Package: Interior lighting package • Radio: Advanced functions MBUX • Radio: MBUX • Radio accessories: Communication module (LTE) for the use of Mercedes me connect services • Remote Services Plus • Windscreen wipers with rain sensor • Seats: Folding seat backrests in the rear • Cruise control • Electronic immobilizer • Decorative elements metal structure | <ul style="list-style-type: none"> • Airbag: Automatic passenger airbag deactivation • Airbag: Sidebag for driver and front passenger • Ambient lighting with 64 light colors • AMG sports pedal system made of brushed stainless steel with rubber studs • Basic services • Brake assist, active • diesel particulate filter • DYNAMIC SELECT • ECO start-stop function • Chassis: Sports chassis with sports direct-steer system • Speed Limit Assistant • Rear window wiper • Interior headliner fabric crystal grey • ISOFIX child seat attachment with Top Tether in the rear • KEYLESS-GO start function • THERMATIC automatic climate control with 1 climate zone • Front headrests • Load compartment cover including EASY-PACK safety net • Steering wheel: Multifunction sports steering wheel in nappa leather • Package: Storage • Upholstery: ARTICO man-made leather/MICROCUT microfiber • Radio accessories: Digital radio (DAB) • Radio accessories: Central display • Tire pressure monitoring (TPMS) • Wheels: 45.7 cm (18") AMG light-alloy wheels in 5-spoke design • Lane Keeping Assist, active • High-visibility vest for drivers • Central locking with remote control |
|--|--|

Extra equipment

- | | |
|--|--|
| <ul style="list-style-type: none"> • Chassis: AGILITY CONTROL chassis with selective damping system with lowering • Interior headliner fabric black • THERMATIC automatic climate control with 2 climate zones (controlled via the central display or the climate control unit in the center console; sensor system for recording, for example, interior/ outside temperature, sunlight, humidity, and dew point; automatic air recirculation (only in conjunction with navigation system); ventilation system consisting of: 3 center vents in the center level and 2 side vents; fine dust activated carbon filter for filtering dust, soot, and pollen; dew point sensor; residual heat function for efficient use of engine waste heat) | <ul style="list-style-type: none"> • Fingerprint scanner (color-illuminated fingerprint scanner in the control panel below the OLED media display - two fingerprints can be stored per user - quick access replaces PIN entry - protects personal data such as profiles as well as office and payment functions) • Fuel tank with larger capacity • Center console diamond look silver gray |
|--|--|



- Package: Advanced Comfort Package (Seat heating for driver and front passenger - Seat Comfort Package: -Various electric and manual adjustment options for the front seats to adapt to the specific body and comfort requirements of the driver and front passenger - Electro-pneumatic 4-way lumbar support and lateral support adjustment with seat controls -Electric seat cushion tilt adjustment - Electric height adjustment -Electric backrest adjustment -Electric seat cushion depth adjustment -Mechanical fore/aft adjustment - Mechanical headrest adjustment)
- Package: Lights (Adaptive High Beam Assistant - automatic high beam switching on and off, camera on the inside of the windshield, detects oncoming and preceding illuminated vehicles, activated by pressing the steering wheel control lever to the high beam position)
- Package: Mirror package (both exterior mirrors electrically foldable (button in the driver's door control panel) - interior mirror and exterior mirror on the driver's side automatically dimmable - ambient lighting of the exterior mirror to illuminate the entry area with projection of the Mercedes-Benz logo)
- Radio accessories: Advanced sound system (with 9 speakers and 225 watts of system power)
- Extendable sun visors (with illuminated cosmetic mirror and side-swivelling and extendable)
- Heat-insulating dark tinted glass
- Decorative elements diamond look silver-grey
- Package: Advanced Infotainment Package (MBUX Navigation Premium (hard drive navigation, pre-installation for Live Traffic Information), Traffic Sign Assistant, Smartphone Integration (wirelessly connects the mobile phone to the multimedia system via Apple CarPlay and Android Auto), Wireless charging system for mobile devices in the front, Driver Display - 31.2 cm (12.3") large LCD color display, Central Display - 30.2 cm (11.9"), touch display with LCD technology)
- Package: Air Balance (fragrance generator with filled fragrance bottle and function button in the glove compartment - ionizer in the side nozzle channel - improved filter system between the intake area and the air distribution system of the air conditioning unit)
- Package: Assistance (Blind Spot Assist: This system can warn you of side collisions with other road users in your blind spot, especially when you activate your turn signal. Even after the journey, the system remains alert and warns you if you open the door at the wrong moment. This is important protection—especially for cyclists.)
- Package: Park (12 ultrasonic sensors - Rear view camera - Active Parking Assist with PARKTRONIC: detects free parking spaces, assisted parking, visual and acoustic warnings, display of camera and ultrasonic data on the media display - Cross traffic warning: can provide a visual and acoustic warning when cross traffic is detected while reversing out of a parking space and, if necessary, automatically initiate emergency braking - Reverse maneuvering braking: can trigger a braking action - Drive-away assistance)
- Seats: Sports seats
- Elimination of type markings on trunk lid
- Heat and noise-insulating acoustic glass (for windshield and front doors)

Brief expert findings

Documents submitted	At the time of the inspection, the registration certificate Part 2 (letter) was available, but the registration certificate Part 1 (certificate) was not. (Copy)
VIN comparison	The vehicle identification number (VIN) was read from the vehicle and its conformity with the submitted documents was verified during the inspection by the undersigned.
Inspection	The inspection conditions were sufficient for the assessment of the vehicle. Lifting equipment and a pit were available for examining the vehicle.
Test drive	No test drive/maneuvering was carried out during the inspection of the vehicle.
Engine function test	An engine test run was performed.

Value reducing factors

No.	Component group	Description
1	Misc.	Main inspection - No evidence - No deduction
2	Seat - front	Seat cover - right side - Soiled - Clean
3	Instrument panel	Indicator light (Reifendruck) - on - Perform diagnosis
4	Interior	Interior - Soiled - Clean
5	Boot lid / rear door	Boot lid - dent(s) - Smooth repair work
6	Sill - right side	Sill - Dent / paintcoat damage - Smart repair



No.	Component group	Description
7	Side panel - rear left side	Sill - Dent / paintcoat damage - Smart repair
8	Rear bumper	Rear bumper - Scratched - Paint
9	Door - front left side	Door - Deformed - Repair and paint
10	Front bumper	Front bumper - Scratched - Repair and paint
11	Wheel / tyres	Alloy rim - rear left side (Materialabtrag) - Damaged - Replace
12	Wheel / tyres	Alloy rim - front right side (Materialabtrag) - Damaged - Replace

Wear and tear

No.	Component group	Description
1	2nd wheel set	1 alloy rim - Damaged - No deduction
2	Body	A-pillar - right side - Stone chips - No deduction
3	Vehicle glazing	Windscreen - Stone chips - No deduction
4	Headlight	Headlight - right side - Stone chips - No deduction
5	Headlight	Headlight - left side - Stone chips - No deduction
6	Bonnet	Bonnet (Kratzer) - Stone chips - No deduction
7	Body	Body (oberflächlich) - Scratch(es) - No deduction
8	Door - rear left side	Door - Scratched - No deduction
9	Trim / covers	Boot lid - interior trim - Scratched - No deduction
10	Side panel - rear left side	Side panel - dent(s) - Smooth repair work

The vehicle shows signs of wear commensurate with its age and use.

Previous damages

No.	Previous damage	Extent of damage (Net)
1	Front, Provided by user / customer, from 10 Feb 2024	13.271,04 €
2	Side - left, Provided by user / customer	

Repainting

No.	Repainting
1	Mudguard - left side, Professionally carried out, Invoice of repair done Non-existent
2	Bonnet, Professionally carried out, Invoice of repair done Non-existent

Paint coat thickness measurement

Mudguard - left side	151 µm	Bonnet	158 µm
----------------------	--------	--------	--------

Order/Scope of order

The order was placed to prepare a sales report for the vehicle described. This includes the following:

- Description of core relevant information about the vehicle
- Documentation of equipment features
(Delivery by third-party service providers)
- Documentation of damage, defects, missing parts
- Documentation of previous damage, unrepaired previous damage, repainting
- a brief visual or functional inspection of the equipment details if possible.
(Functional tests of driver assistance systems are not included in the scope of services!)
- a photo documentation of the vehicle



Basis for the order

This product is based on the Alphabet Fuhrpark GmbH guidelines for vehicle returns and valuations. The expert makes the explicit findings in each individual case objectively within the framework of the specified standards based on his or her own expertise.

The vehicle inspection takes place in a disassembled state.

Damage or defects that can only be detected during disassembly/diagnosis work or through advanced knowledge remain within the scope of the prognosis risk. An extended risk exists for concealed defects caused by fraudulent deception and not identifiable by the expert.

Damage or defects resulting from normal use or wear and tear of the vehicle will be accepted according to the applicable standard.

There was no explicit identification or monetary consideration of the expected features within the product.

Features which in their nature and severity slightly exceed normal use but do not constitute unacceptable damage will be documented and identified under signs of use if necessary.

Damage or defects which, according to the underlying standard, can no longer be attributed to normal use or wear and tear are listed in the product under "Depreciating Factors".

Depending on the product specification, a monetary ID can be provided. If this takes place, the costs can be 100% d or pro rata depending on the vehicle's age and mileage.

Previous damages

According to available information previous damages were repaired at the vehicle. Traces of repairs, which allow conclusions about the area of repair, were not recognizable during the inspection.

Comments

Der beiliegende Winterradsatz ist nicht Bestandteil der vorliegenden Fahrzeugausstattung.



Figure 1: Diagonal front (left)



Figure 2: Diagonal front (right)



Figure 3: Diagonal rear (left)



Figure 4: Diagonal rear (right)



Figure 5: Interior - front



Figure 6: Interior - rear



Figure 7: Instrument cluster



Figure 8: Instrument panel



Figure 9: interior 360° view ([Online link](#))



Figure 10: Cargo area



Figure 11: VIN



Figure 12: Mounted tyres



Figure 13: Documents



Figure 14: Additional tyres

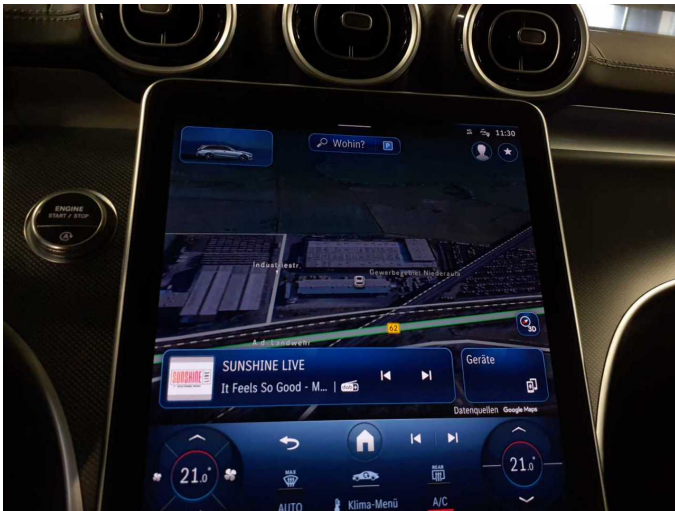


Figure 15: Navigation

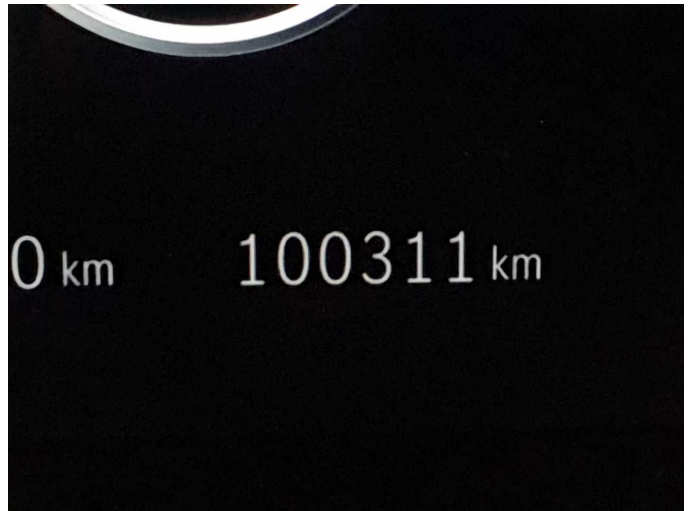


Figure 16: Misc.

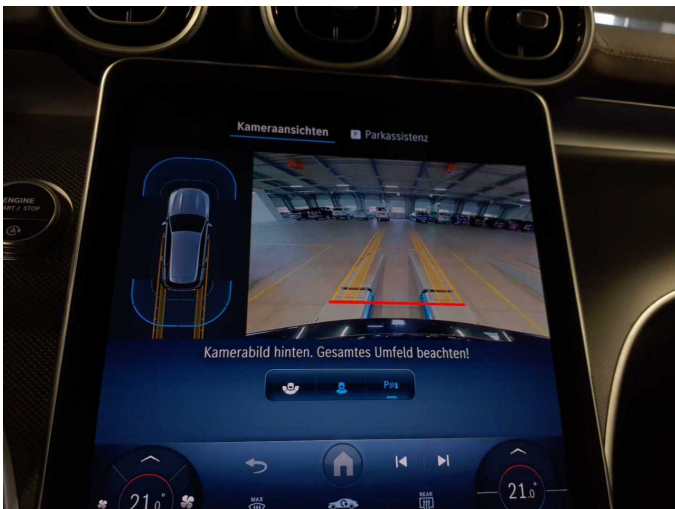


Figure 17: Misc.



Figure 18: Misc.



Figure 19: Misc.



Figure 20: Misc.



Figure 21: Misc.



Figure 22: Misc.



Figure 23: Misc.



Figure 24: Misc.

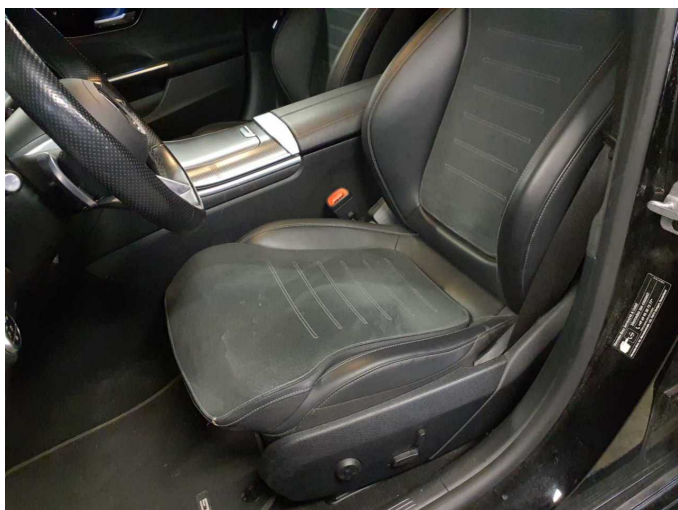


Figure 25: Misc.

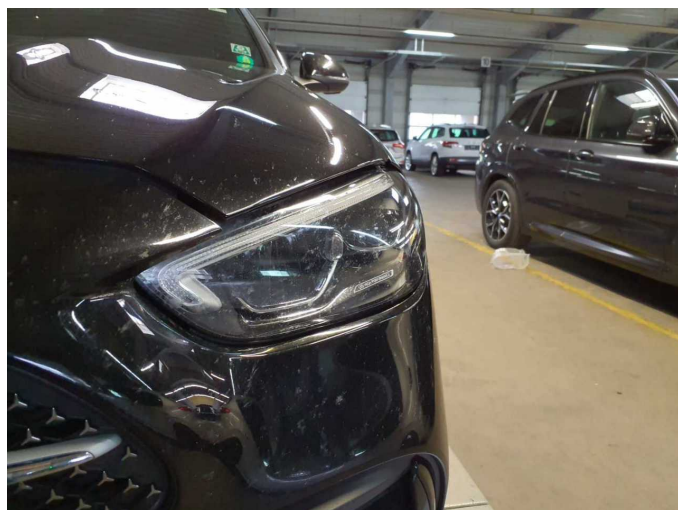


Figure 26: Misc.

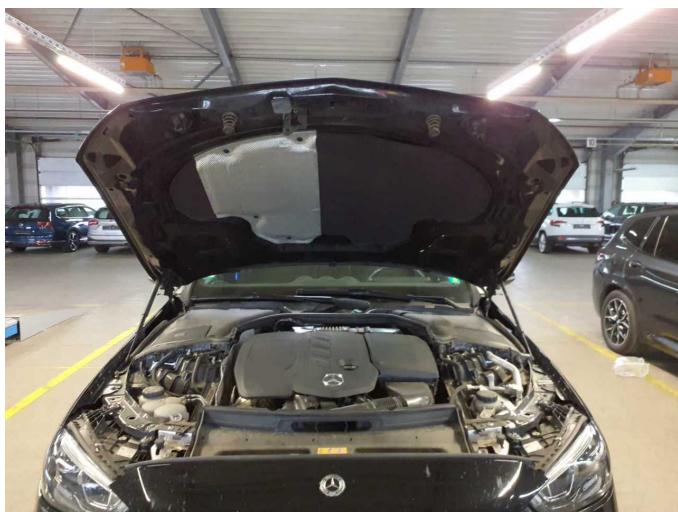


Figure 27: Misc.

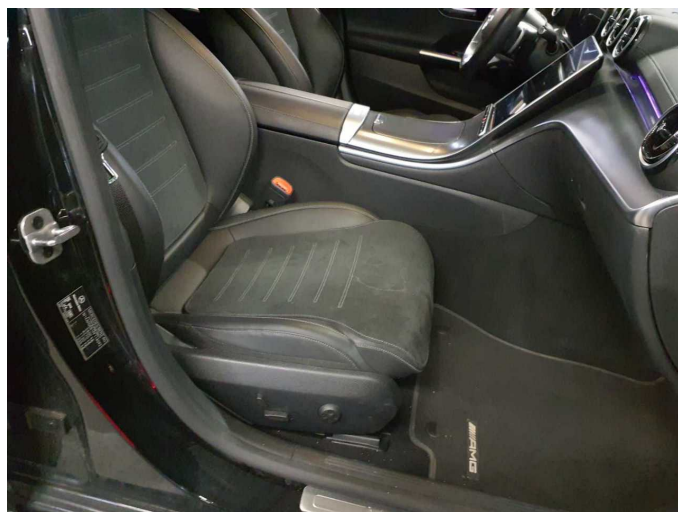


Figure 28: Misc.



Figure 29: Misc.



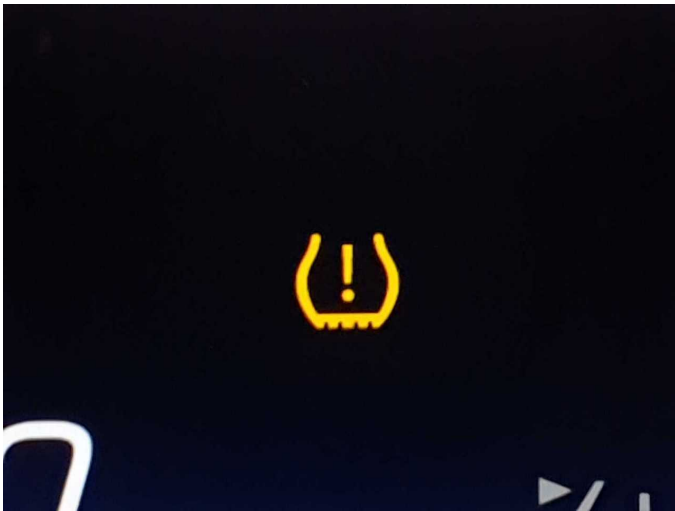
Figure 30: Misc.



Figure 31: Misc.



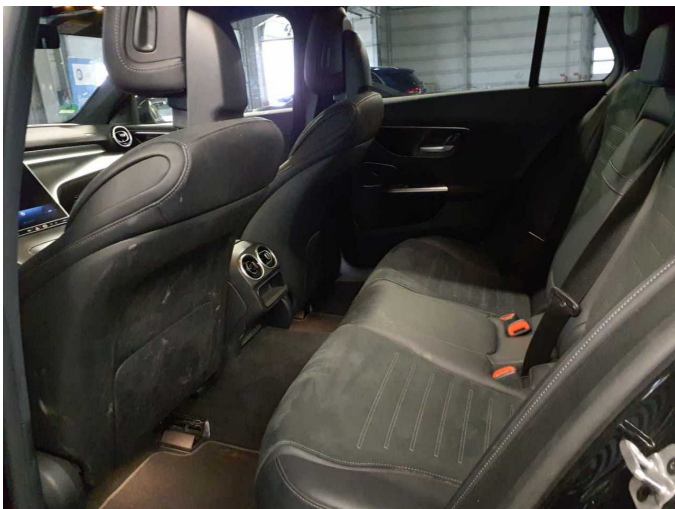
Damage 2: Seat - front: Seat cover - right side - Soiled - Clean



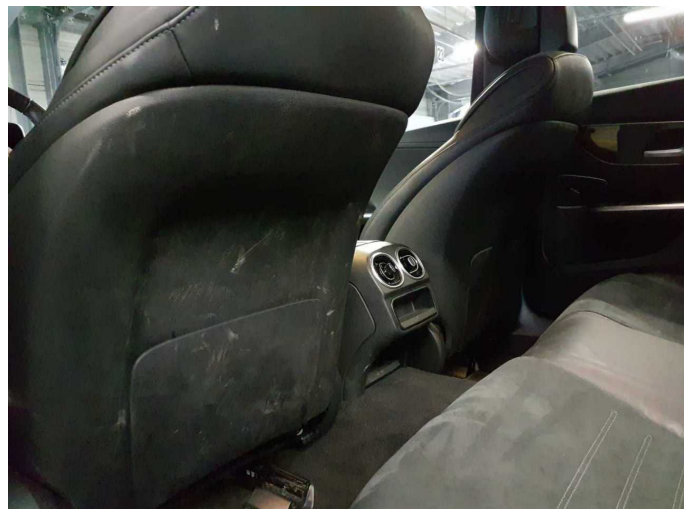
Damage 3: Instrument panel: Indicator light (Reifendruck) - on - Perform diagnosis



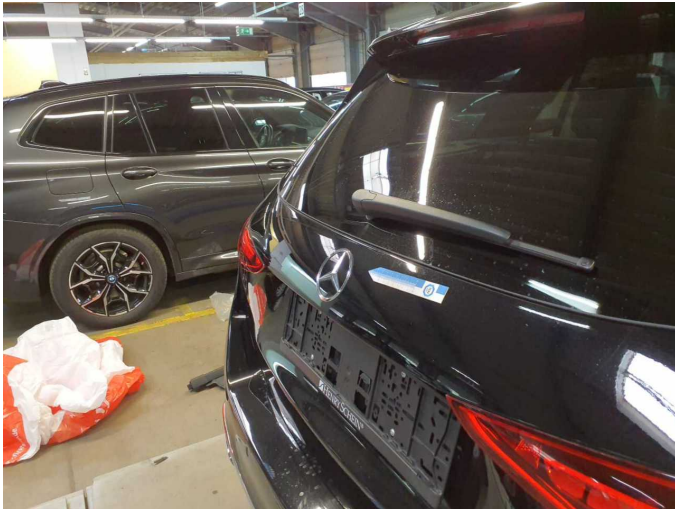
Damage 3: Instrument panel: Indicator light (Reifendruck) - on - Perform diagnosis



Damage 4: Interior: Interior - Soiled - Clean



Damage 4: Interior: Interior - Soiled - Clean



Damage 5: Boot lid / rear door: Boot lid - dent(s) - Smooth repair work



Damage 5: Boot lid / rear door: Boot lid - dent(s) - Smooth repair work



Damage 6: Sill - right side: Sill - Dent / paintcoat damage - Smart repair



Damage 6: Sill - right side: Sill - Dent / paintcoat damage - Smart repair



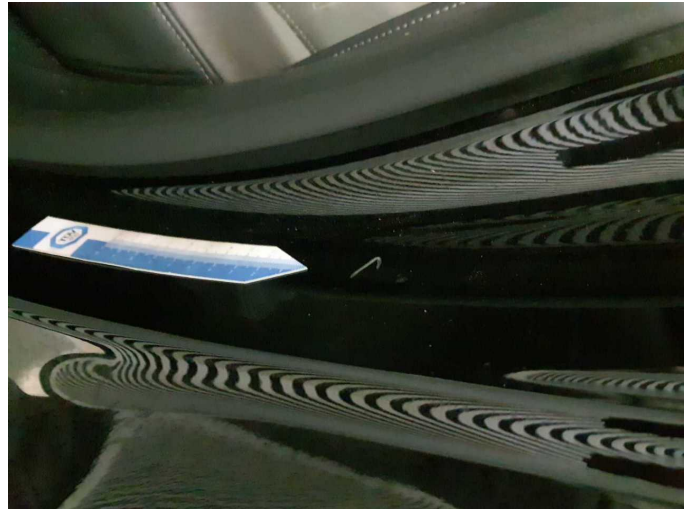
Damage 6: Sill - right side: Sill - Dent / paintcoat damage - Smart repair



Damage 6: Sill - right side: Sill - Dent / paintcoat damage - Smart repair



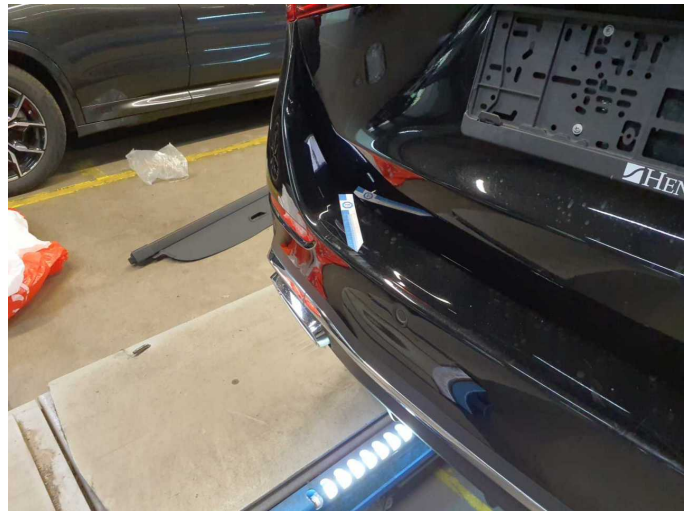
Damage 7: Side panel - rear left side: Sill - Dent / paintcoat damage - Smart repair



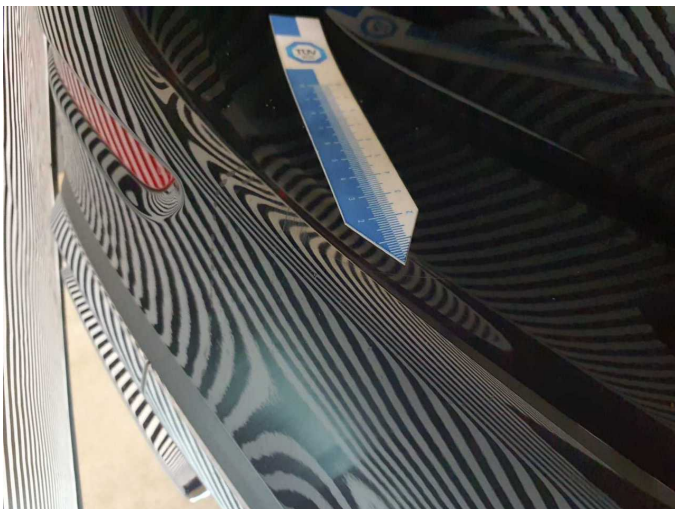
Damage 7: Side panel - rear left side: Sill - Dent / paintcoat damage - Smart repair



Damage 7: Side panel - rear left side: Sill - Dent / paintcoat damage - Smart repair



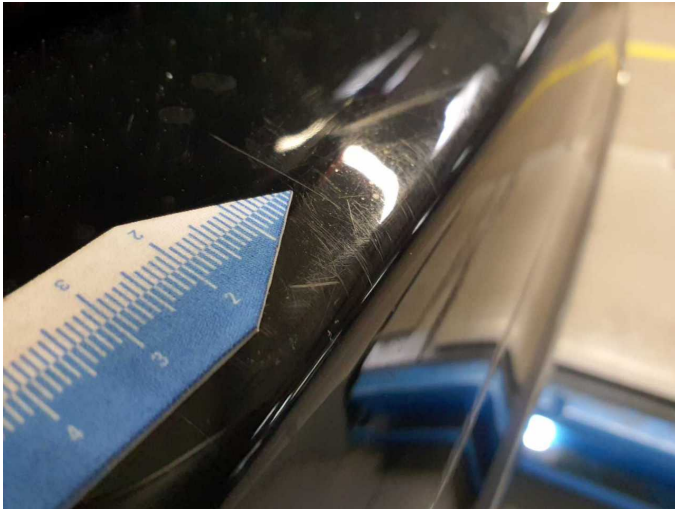
Damage 8: Rear bumper: Rear bumper - Scratched - Paint



Damage 8: Rear bumper: Rear bumper - Scratched - Paint



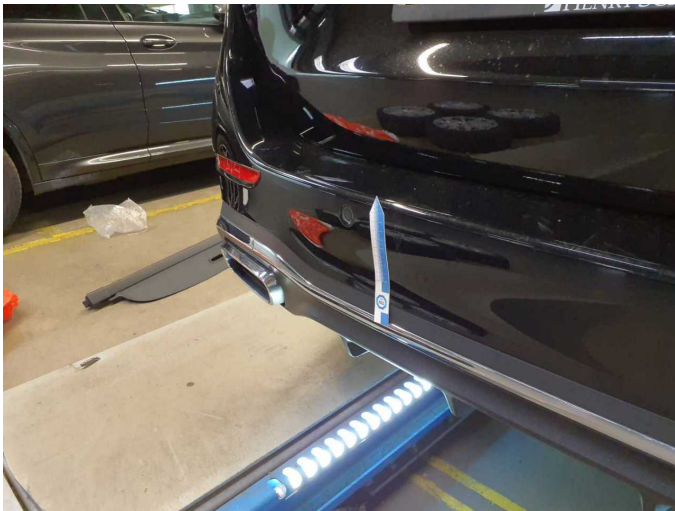
Damage 8: Rear bumper: Rear bumper - Scratched - Paint



Damage 8: Rear bumper: Rear bumper - Scratched - Paint



Damage 8: Rear bumper: Rear bumper - Scratched - Paint



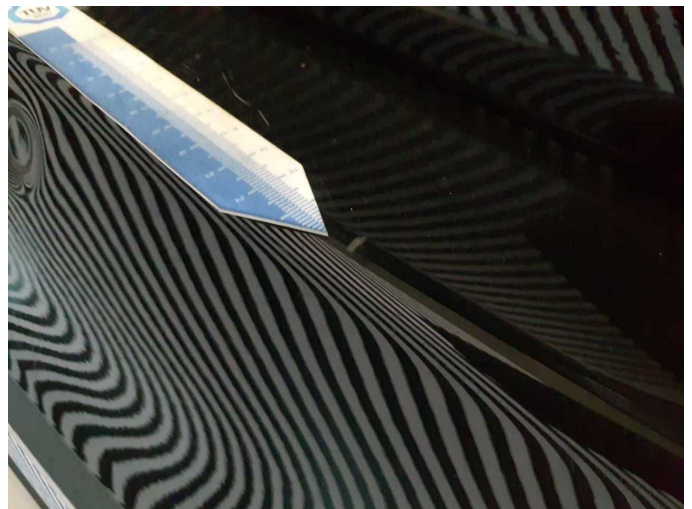
Damage 8: Rear bumper: Rear bumper - Scratched - Paint



Damage 8: Rear bumper: Rear bumper - Scratched - Paint



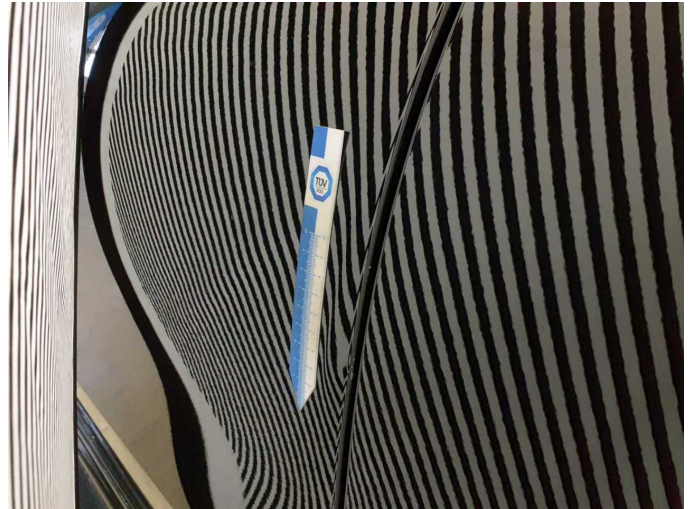
Damage 8: Rear bumper: Rear bumper - Scratched - Paint



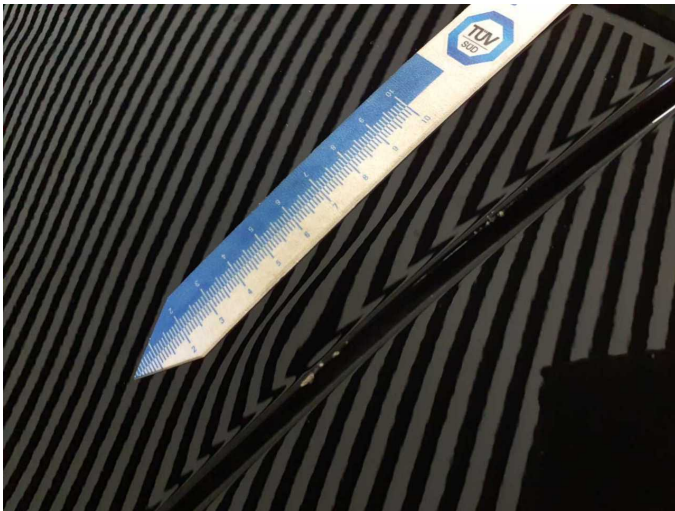
Damage 8: Rear bumper: Rear bumper - Scratched - Paint



Damage 9: Door - front left side: Door - Deformed - Repair and paint



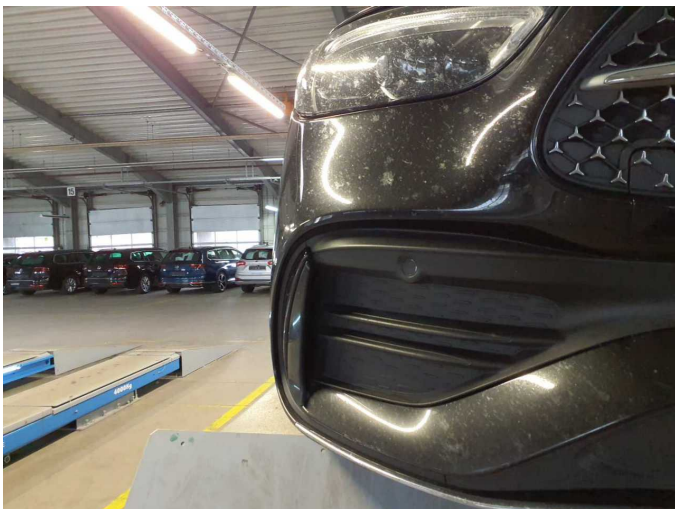
Damage 9: Door - front left side: Door - Deformed - Repair and paint



Damage 9: Door - front left side: Door - Deformed - Repair and paint



Damage 9: Door - front left side: Door - Deformed - Repair and paint



Damage 10: Front bumper: Front bumper - Scratched - Repair and paint



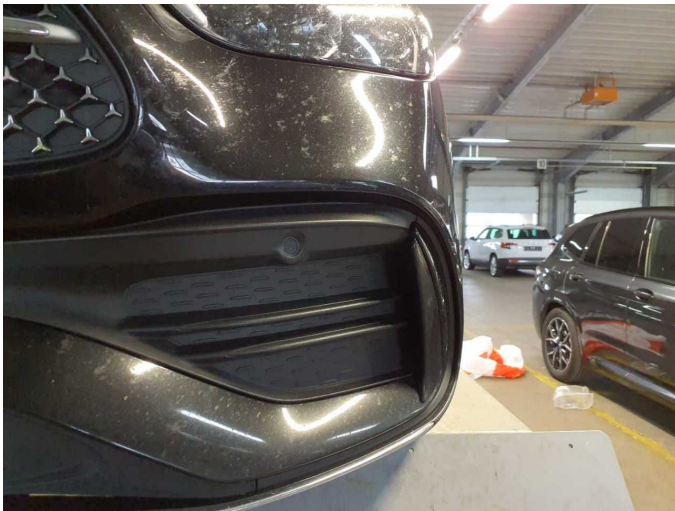
Damage 10: Front bumper: Front bumper - Scratched - Repair and paint



Damage 10: Front bumper: Front bumper - Scratched - Repair and paint



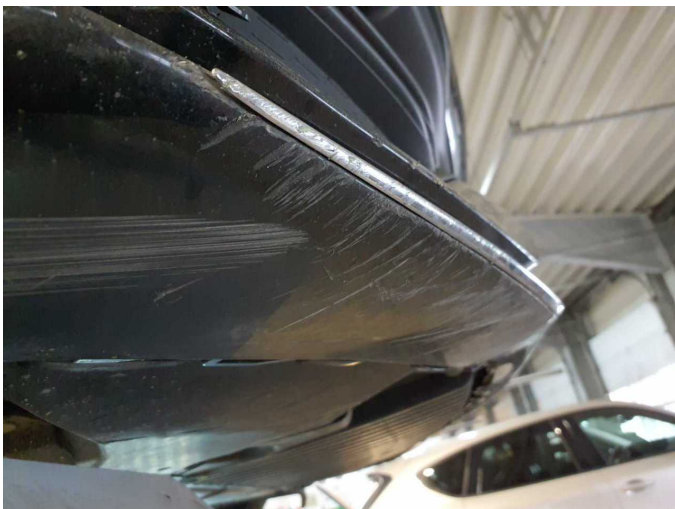
Damage 10: Front bumper: Front bumper - Scratched - Repair and paint



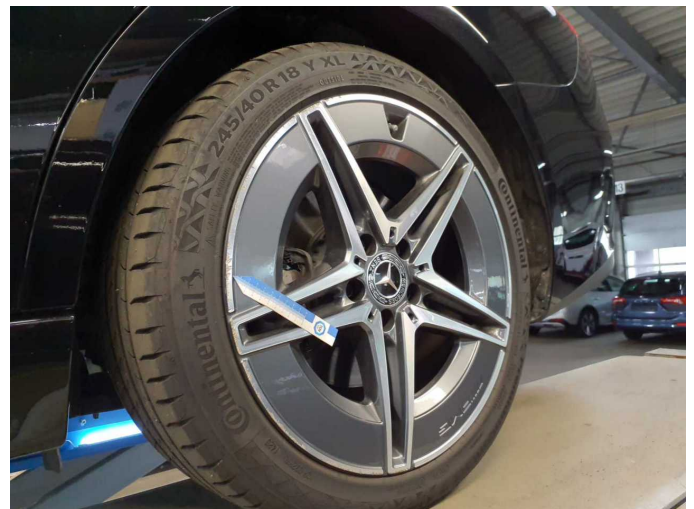
Damage 10: Front bumper: Front bumper - Scratched - Repair and paint



Damage 10: Front bumper: Front bumper - Scratched - Repair and paint



Damage 10: Front bumper: Front bumper - Scratched - Repair and paint



Damage 11: Wheel / tyres: Alloy rim - rear left side (Materialabtrag) - Damaged - Replace



Damage 11: Wheel / tyres: Alloy rim - rear left side (Materialabtrag) - Damaged - Replace



Damage 12: Wheel / tyres: Alloy rim - front right side (Materialabtrag) - Damaged - Replace



Damage 12: Wheel / tyres: Alloy rim - front right side (Materialabtrag) - Damaged - Replace



Damage 12: Wheel / tyres: Alloy rim - front right side (Materialabtrag) - Damaged - Replace



Wear and tear 1: 2nd wheel set: 1 alloy rim - Damaged - No deduction



Wear and tear 1: 2nd wheel set: 1 alloy rim - Damaged - No deduction



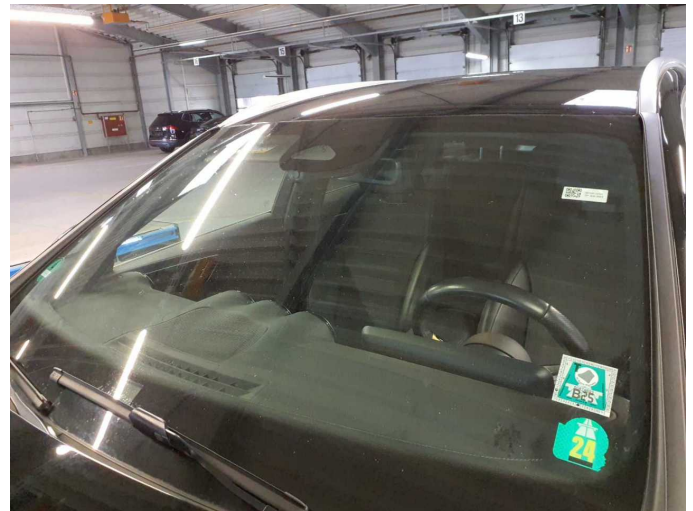
Wear and tear 1: 2nd wheel set: 1 alloy rim - Damaged - No deduction



Wear and tear 2: Body: A-pillar - right side - Stone chips - No deduction



Wear and tear 2: Body: A-pillar - right side - Stone chips - No deduction



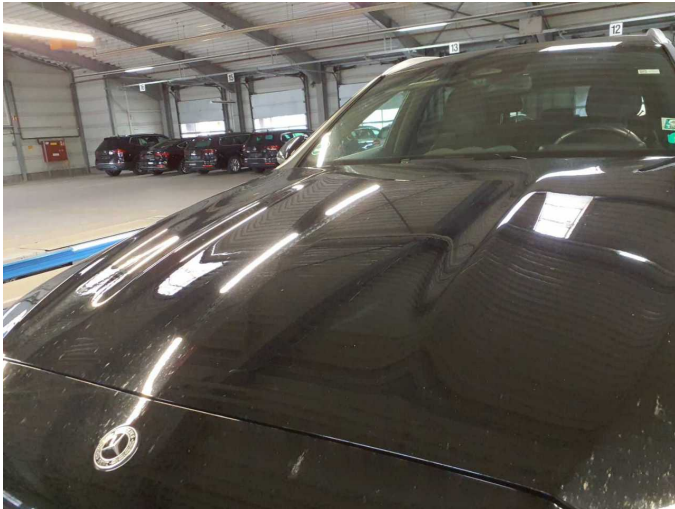
Wear and tear 3: Vehicle glazing: Windscreen - Stone chips - No deduction



Wear and tear 3: Vehicle glazing: Windscreen - Stone chips - No deduction



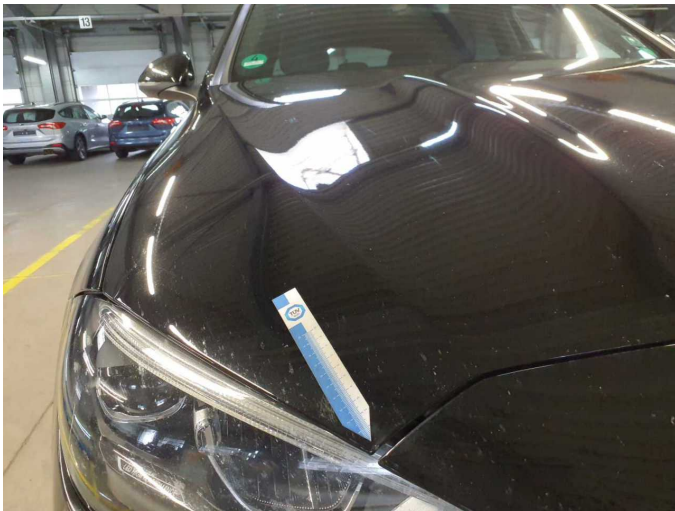
Wear and tear 3: Vehicle glazing: Windscreen - Stone chips - No deduction



Wear and tear 6: Bonnet: Bonnet (Kratzer) - Stone chips - No deduction



Wear and tear 6: Bonnet: Bonnet (Kratzer) - Stone chips - No deduction



Wear and tear 6: Bonnet: Bonnet (Kratzer) - Stone chips - No deduction



Wear and tear 6: Bonnet: Bonnet (Kratzer) - Stone chips - No deduction



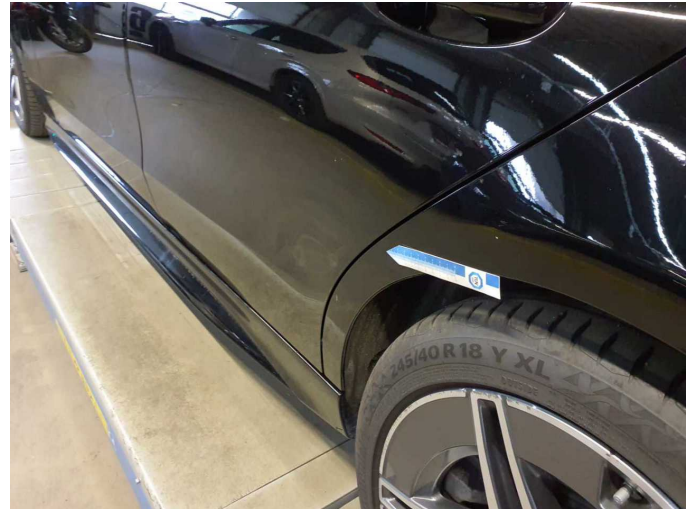
Wear and tear 9: Trim / covers: Boot lid - interior trim - Scratched - No deduction



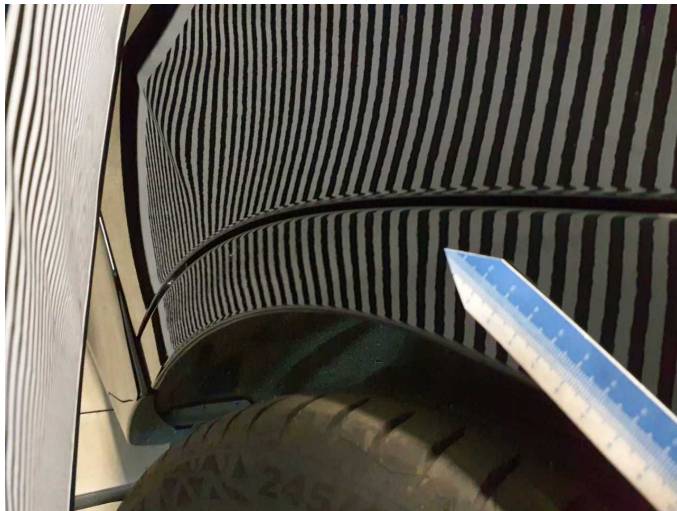
Wear and tear 9: Trim / covers: Boot lid - interior trim - Scratched - No deduction



Wear and tear 9: Trim / covers: Boot lid - interior trim - Scratched - No deduction



Wear and tear 10: Side panel - rear left side: Side panel - dent(s) - Smooth repair work



Wear and tear 10: Side panel - rear left side: Side panel - dent(s) - Smooth repair work



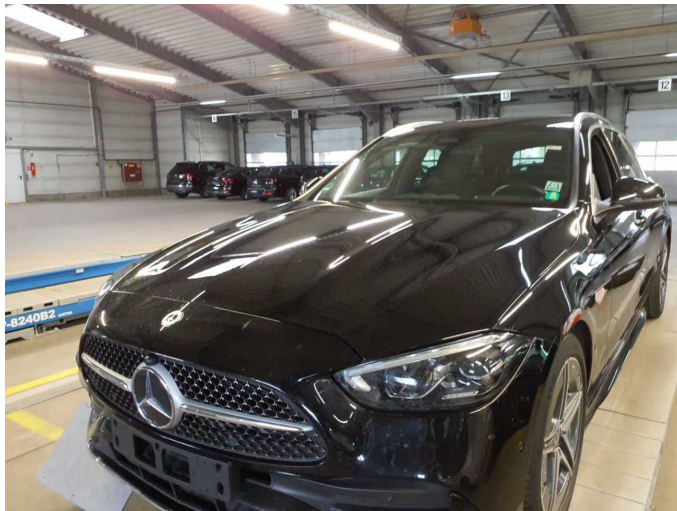
Wear and tear 10: Side panel - rear left side: Side panel - dent(s) - Smooth repair work



Repainting 1: Mudguard - left side



Repainting 1: Mudguard - left side



Repainting 2: Bonnet



Repainting 2: Bonnet



Wartungshistorie

(gemäß Auftraggeber Informationen)

Fahrgestellnummer: W1KAH0EB1PF114092

Hersteller / Modell: MERCEDES-BENZ MB C 220 d T 9G-TRONIC AMG Line

Datum	KM-Stand	Beschreibung
28.05.2025	90.315	Bremsscheiben+Beläge v+h
05.02.2025	77.126	Regelwartungsdienst
30.07.2024	48.685	Bremsinspektion vo + hi; Regelwartungsdienst
27.12.2023	26.576	Regelwartungsdienst