



Expertise

Protocol number: 41004597
Order No. / Reference: 24876415
Inspection date: 6 Aug 2025

Manufacturer: Mercedes-Benz
VIN: W1KAH0DB6PF113358

Model: C 200 d T 9G-TRONIC



Vehicle details	
Manufacturer / Type / Model / Equipment	
Mercedes-Benz C 200 d T 9G-TRONIC	
Vehicle Identification number	W1KAH0DB6PF113358
Mileage (Read)	109,873 km
First registration	25 May 2023
Number of holders	1
Next periodical technical inspection	05/2026
(Report not on hand)	
Power / Engine displacement	120 kw / 1,993 ccm
Fuel type / Cylinder	Hybrid Diesel / E / 4
Gearbox / Number of gears	Automatic / 9
Type of drive	Rear drive
Type of vehicle	Station wagon
Colour / colour code	SCHWARZ - UNILACK
Doors / Seats	5 / 5
Upholstery type	Cloth
Colour of upholstery	Black-Grey
Vehicle with smoke odor	no



Vehicle details

Maintenance booklet / proof	digital proof / complete	Next maintenance in	276 Tag(e)
Last maintenance on / at	03/2025 at 100,246 km		
Key is / should be	2 / 2	FZG documents	ZB#2 (B) was available (copy), ZB#1 (S) was not available
		Letter No.	GV671599
Previous damage / Accident	None detectable	Repainting	None detectable
Inspection conditions	Sufficient	Lifting equipment / pit	yes
Test drive	Not performed	Engine function test	Performed
Manufacturer key number/ type code number	2222 / BDF 00259		
Emission standard	EURO6;WLTP;AP;PI/CI; M, N1 I	Fine dust sticker	
Permitted total weight	2,400 kg	Empty weight	

Tyres

Mounted tyres

#	Tyre size	Type of tyre	Manufacturer	Tread depth
1)	205/55 R17 91W	Summer tyres on Light alloy	Pirelli	3mm / 3mm
2)	205/55 R17 91W	Summer tyres on Light alloy	Pirelli	4mm / 4mm

Additional tyres

#	Tyre size	Type of tyre	Manufacturer	Tread depth
1)	225/50 R17 98H	Winter tyres on Light alloy	Michelin	5mm / 5mm
2)	225/50 R17 98H	Winter tyres on Light alloy	Michelin	4mm / 4mm

Legend: Tread depth information for tires on the left is in the first place, for tires on the right is in the second place on the axle in the direction of travel

Equipment

Standard equipment

- Airbag for driver and front passenger
- Airbag: Center airbag
- Airbag: Sidebag for driver and front passenger (combined thorax/pelvis bag)
- Airbag: Windowbag for driver and front passenger
- Exterior mirrors left and right heated and electrically adjustable
- Basic services (breakdown management, maintenance management, accident management, telediagnosis, remote vehicle diagnosis)
- Double cup holders at the front
- EASY-PACK tailgate (with electric operation for opening and closing)
- Electronic Stability Program (ESP) (including anti-lock braking system (ABS) and traction control (ASR))
- 4-way electric window lifter
- Velour floor mats
- Speed Limit Assistant (The Speed Limit Assistant detects and displays speed limits.)
- Rear window wiper
- Heated rear window
- Interior headliner fabric crystal grey
- ISOFIX child seat attachment with Top Tether in the rear
- Mechanical child safety lock for the rear doors
- Rear headrests (3)
- Front headrests
- Paint finish: Uni
- Load compartment cover including EASY-PACK safety net
- LED High Performance Headlights (The elements of the LED High Performance Headlights: - Torch and trifunctional light guide for daytime running lights, position lights, and direction indicators - Multi-chamber reflector system with 4 individual reflectors each) for low beam and high beam. The elements of the rear lights in LED technology: - All lighting functions in full LED technology - Tail light - Brake light and parking light - Rear fog light (left-side only) - Direction indicator - Reversing light - 3rd brake light)
- Mercedes-Benz emergency call system (can provide a decisive time advantage in an emergency. A communication module with its own SIM card automatically triggers an emergency call when an accident is detected, which can shorten the time until emergency services arrive. The emergency call can also be triggered manually to organize assistance.)
- Airbag: Automatic passenger airbag deactivation (The system automatically deactivates the passenger airbag as soon as it detects a rear-facing child seat or registers that the passenger seat is unoccupied. A transponder in the child seat is not necessary. If it is detected that an adult is sitting down, the airbag is automatically activated and the risk of incorrect operation is reduced.)
- Brake assist, active
- Roof rails black
- diesel particulate filter
- DYNAMIC SELECT (consisting of driving programs: Comfort, Sport, Eco mode)
- ECO start-stop function
- Chassis: AGILITY CONTROL chassis with selective damping system with lowering
- Front bumper painted in body color (with centrally positioned decorative panel (wing) in silver and diamond-patterned air intakes in black grained)
- Transmission: Automatic 9-speed, 9G-TRONIC
- Rear bumper with black grained diffuser insert (body-colored rear bumper with black grained diffuser insert and invisibly integrated exhaust tailpipes)
- KEYLESS-GO start function
- THERMATIC automatic climate control with 1 climate zone (controlled via the central display or the climate control unit in the center console - sensor system for recording, for example, interior/outside temperature, sunlight, humidity, and dew point - ventilation system consisting of: 3 center vents in the center level and 2 side vents, 2 ventilation openings each in the footwell for the driver and front passenger - fine dust filter for filtering dust, soot, and pollen - dew point sensor, continuous defroster vent under the windshield and 2 fixed defroster vents)
- Steering wheel: multifunction sports steering wheel in leather (sporty steering wheel in 3-spoke design - leather finish - black grained shift paddles - control via touch control panels: left: driver display, cruise control and limiter or active distance assistant DISTRONIC; right: MBUX multimedia system (e.g. audio volume and track selection, telephony and navigation), touch sensitivity adjustable via central display)
- Center console in high-gloss black
- Package: Storage (storage compartment with net on the left side of the cargo area - double cup holder in the center console for 2 x 750 ml - rubber strap on the right side of the cargo area - folding box under the cargo floor - 1 additional bag hook on the right side of the cargo area - recess including storage tray on the right side of the cargo area - map pockets on the backs of the front seats - reversible mat in the trunk floor)
- Upholstery: Tandel fabric



- Package: Interior Lighting Package (Illuminated glove compartment - Illumination of the Wireless Mobile Interface or the storage compartment for mobile phones - Illumination of the storage compartment in the center console or the double cup holders - Illumination of the storage compartment under the center console armrest - Two vanity lights in front - Two reading lights in the overhead control panel - Two reading lights in the interior mirror in conjunction with the mirror P - Two reading lights and interior light function in the grab handles in the rear - Illumination of the trunk or cargo area)
- Radio: MBUX (fully digital instrument display with 26 cm (10.25") LCD color display and a resolution of 1,440 x 540 pixels - Bluetooth telephony / audio - Wi-Fi hotspot)
- Radio accessories: Digital radio (DAB)
- Radio accessories: Central display (high-resolution, slightly angled central display with a 24 cm (9.5") screen diagonal, with MBUX multimedia system - touch display with LCD technology)
- Tire pressure monitoring (TPMS)
- Remote Services Plus (Communication module - Mercedes me Services, remote vehicle status query, programming of auxiliary heating/ventilation, remote door locking and unlocking, sunroof/ windows with remote locking and opening including ventilation radio, personalized vehicle location, vehicle tracking, geographic vehicle monitoring, parking service monitoring, location function (Remote Vehicle Finder), notification when driving at speed, Send2Car function)
- Lane Keeping Assist, active
- Cruise control
- Electronic immobilizer
- Decorative elements basic foiling instrument panel
- Radio: Advanced MBUX functions (personalization (profiles) and prediction functions - MBUX voice assistant "LINGUATRONIC" with natural language understanding - activation via Hey Mercedes - MBUX voice assistant learning function through connection to a cloud-based online dictionary, Mercedes me connect service available free of charge for 3 years from activation - Wi-Fi hotspot - Internet radio)
- Radio accessory: Communication module (LTE) for using Mercedes me connect services (The communication module with a vehicle-mounted, LTE-capable SIM card offers you added convenience and safety. It continuously connects you to your vehicle—and the vehicle to infrastructure such as the Mercedes-Benz server or the internet. This allows you to use services such as Live Traffic Information from Mercedes me connect.)
- Wheels: 43.2 cm (17") alloy wheels in multi-spoke design (painted vanadium silver with 205/55 R 17 on 6.5 J x 17 ET 34.5)
- Windscreen wipers with rain sensor
- Power steering
- Seats: Folding seat backrests in the rear
- Seats: Front seats mechanically adjustable (lengthwise and height)
- High-visibility vest for drivers
- Central locking with remote control

Extra equipment

- Fuel tank with larger capacity
- Package: Driver Assistance (Active Distance Assist, DISTRONIC, Active Speed Limit Assist, Advanced Auto Restart on Motorways, Route-Based Speed Adaptation with End-of-Traffic Jam Assist, Active Traffic Jam Assist, Active Steering Assist, Active Lane Change Assist, Active Emergency Stop Assist, Emergency Lane Function, Active Brake Assist with Vehicle, Bicycle, and Pedestrian Detection; Intersection Function, Turning Function, End-of-Traffic Jam Emergency Braking Function, Evasive Steering Assist, Active Lane Keeping Assist, Active Blind Spot Assist, Exit Warning Function)
- Package: Mirror package (both exterior mirrors can be electrically folded in and out (button in the control panel of the driver's door) - interior mirror and exterior mirror on the driver's side automatically dim - ambient lighting of the exterior mirror to illuminate the entry area with projection of the Mercedes-Benz logo)
- Elimination of type markings on trunk lid
- Heat-insulating dark tinted glass
- Package: Business
- Package: Infotainment package (MBUX Navigation Premium (hard drive navigation, pre-installation for Live Traffic Information), Traffic Sign Assistant, Smartphone Integration (connects the mobile phone wirelessly to the multimedia system via Apple CarPlay and Android Auto), Wireless charging system for mobile devices in the front)
- Package: Comfort package (seat heating for driver and front passenger - 4-way lumbar support)
- Package: Park (12 ultrasonic sensors - Rear view camera - Active Parking Assist with PARKTRONIC: detects free parking spaces, assisted parking, visual and acoustic warnings, display of camera and ultrasonic data on the media display - Cross traffic warning: can provide a visual and acoustic warning when cross traffic is detected while reversing out of a parking space and, if necessary, automatically initiate emergency braking - Reverse maneuvering braking: can trigger a braking action - Drive-away assistance)



Brief expert findings

Documents submitted	At the time of the inspection, the registration certificate Part 2 (letter) was available, but the registration certificate Part 1 (certificate) was not. (Copy)
VIN comparison	The vehicle identification number (VIN) was read and the undersigned verified that it matched the documents submitted during the inspection.
Inspection	The inspection conditions were sufficient for the assessment of the vehicle. Lifting equipment and a pit were available for examining the vehicle.
Test drive	No test drive/maneuvering was carried out during the inspection of the vehicle.
Engine function test	An engine test run was performed.

Value reducing factors

No.	Component group	Description
1	Misc.	Main inspection - No evidence - No deduction
2	Trim / covers	Door trim - front left side - Damaged - Loss in value
3	Side panel - rear left side	Side panel - dent(s) - Smart repair
4	Door - front left side	Door - Scratch(es) - Smart repair
5	Bonnet	Bonnet - Stone chips - Loss in value
6	Vehicle glazing	Rear window - Scratch(es) - Loss in value
7	Wheel / tyres	Alloy rim - front right side - Scratched - Loss in value
8	Boot lid / rear door	Boot lid - dent(s) - Smooth repair work
9	Braking system	Brake discs and pads - rear (schlechtes Tragbild, Rostrand) - Worn - Replace
10	Front bumper	Front bumper - Scratched - Repair and paint
11	Rear bumper	Rear bumper (inkl. Spoiler) - Scratched - Repair and paint

Wear and tear

No.	Component group	Description
1	Body	Body - Scratch(es) - No deduction

The vehicle shows signs of wear commensurate with its age and use.

Order/Scope of order

The order was placed to prepare a sales report for the vehicle described. This includes the following:

- Description of core relevant information about the vehicle
- Documentation of equipment features
(*Delivery by third-party service providers*)
- Documentation of damage, defects, missing parts
- Documentation of previous damage, unrepaired previous damage, repainting
- a brief visual or functional inspection of the equipment details if possible.
(*Functional tests of driver assistance systems are not included in the scope of services!*)
- a photo documentation of the vehicle



Basis for the order

This product is based on the Alphabet Fuhrpark GmbH guidelines for vehicle returns and valuations. The expert makes the explicit findings in each individual case objectively within the framework of the specified standards based on his or her own expertise.

The vehicle inspection takes place in a disassembled state.

Damage or defects that can only be detected during disassembly/diagnosis work or through advanced knowledge remain within the scope of the prognosis risk. An extended risk exists for concealed defects caused by fraudulent deception and not identifiable by the expert.

Damage or defects resulting from normal use or wear and tear of the vehicle will be accepted according to the applicable standard.

There was no explicit identification or monetary consideration of the expected features within the product.

Features which in their nature and severity slightly exceed normal use but do not constitute unacceptable damage will be documented and identified under signs of use if necessary.

Damage or defects which, according to the underlying standard, can no longer be attributed to normal use or wear and tear are listed in the product under "Depreciating Factors".

Depending on the product specification, a monetary ID can be provided. If this takes place, the costs can be 100% d or pro rata depending on the vehicle's age and mileage.

Previous damages

Apparently, no repaired previous damage could be found on the vehicle.



Figure 1: Diagonal front (left)



Figure 2: Diagonal front (right)



Figure 3: Diagonal rear (left)



Figure 4: Diagonal rear (right)



Figure 5: Interior - front



Figure 6: Interior - rear



Figure 7: Instrument cluster



Figure 8: Instrument panel



Figure 9: interior 360° view



Figure 10: Cargo area



Figure 11: VIN



Figure 12: Mounted tyres

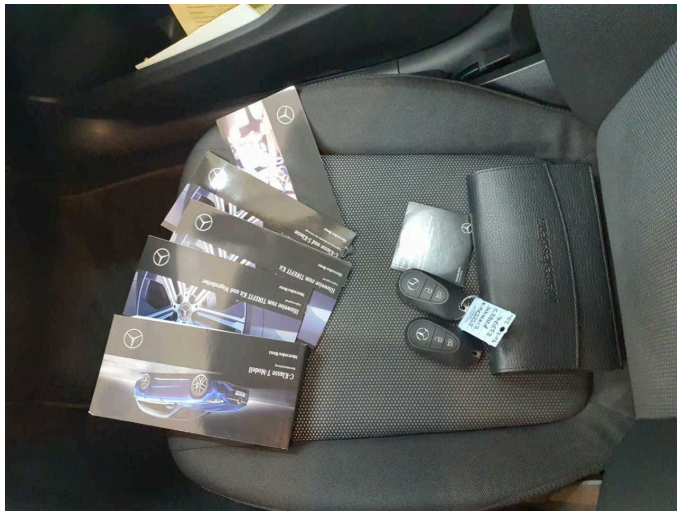


Figure 13: Documents



Figure 14: Documents



Figure 15: Additional tyres

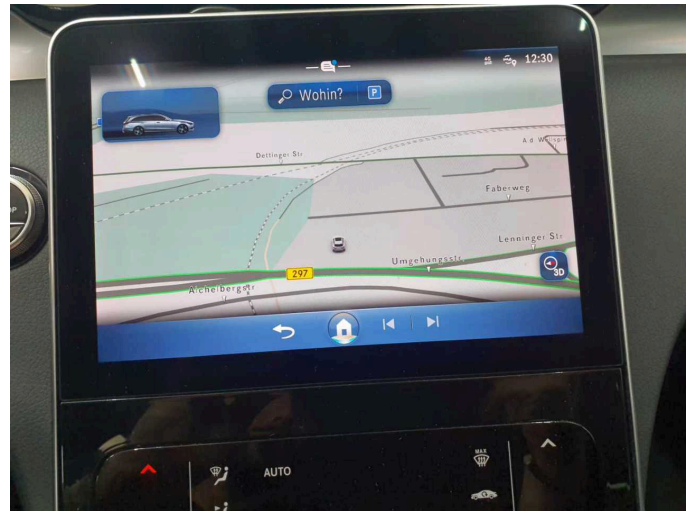


Figure 16: Navigation



Figure 17: Misc.

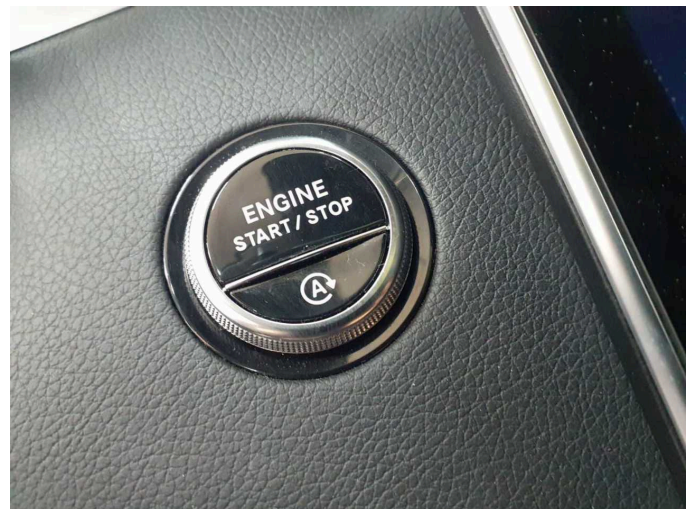


Figure 18: Misc.



Figure 19: Misc.



Figure 20: Misc.



Figure 21: Misc.

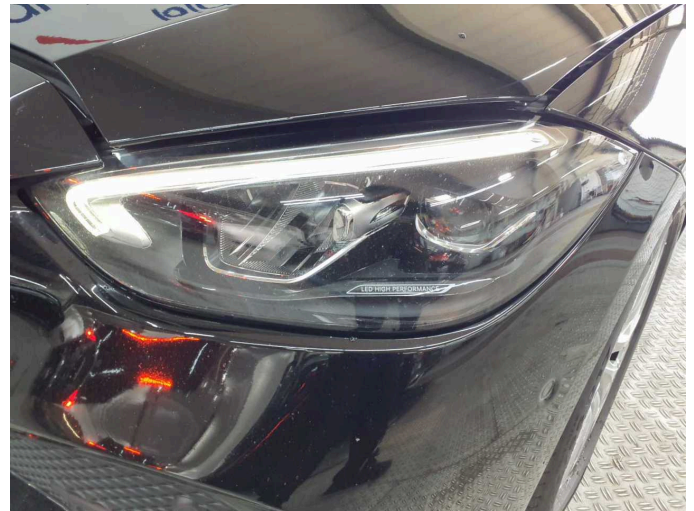


Figure 22: Misc.



Figure 23: Misc.



Figure 24: Misc.



Figure 25: Misc.



Figure 26: Misc.



Figure 27: Misc.



Figure 28: Misc.



Damage 2: Trim / covers: Door trim - front left side - Damaged - Loss in value



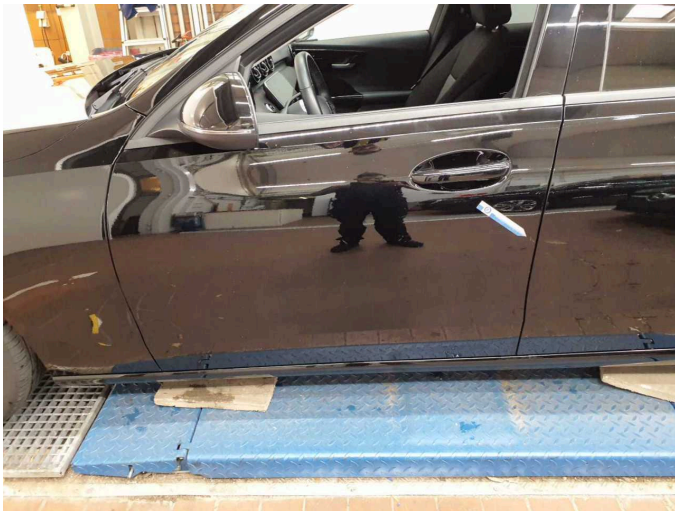
Damage 2: Trim / covers: Door trim - front left side - Damaged - Loss in value



Damage 3: Side panel - rear left side: Side panel - dent(s) - Smart repair



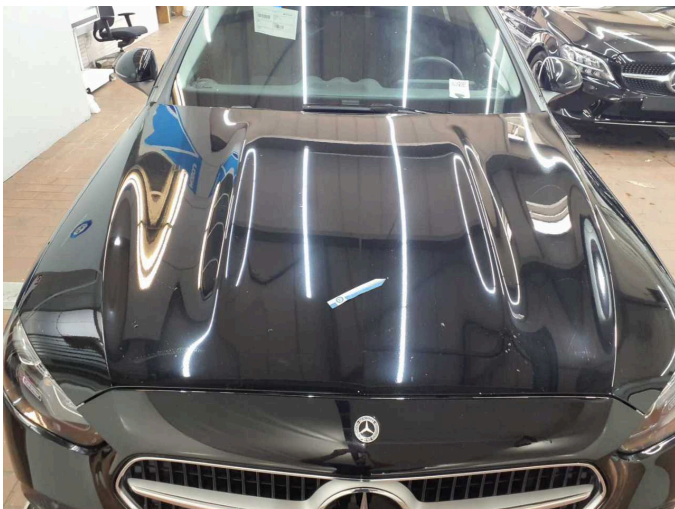
Damage 3: Side panel - rear left side: Side panel - dent(s) - Smart repair



Damage 4: Door - front left side: Door - Scratch(es) - Smart repair



Damage 4: Door - front left side: Door - Scratch(es) - Smart repair



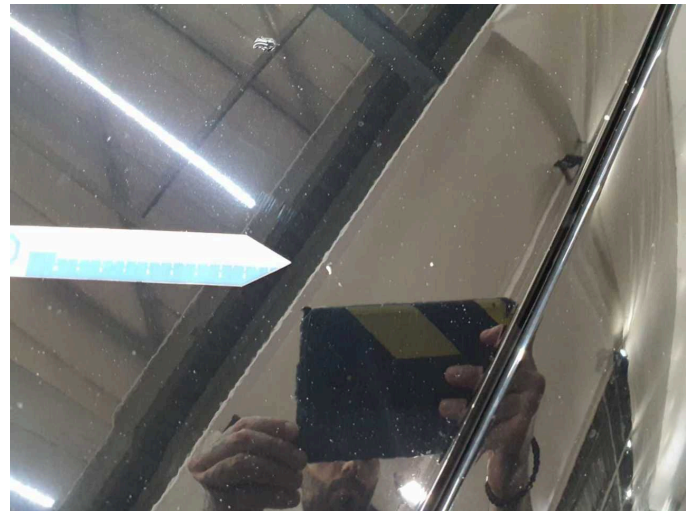
Damage 5: Bonnet: Bonnet - Stone chips - Loss in value



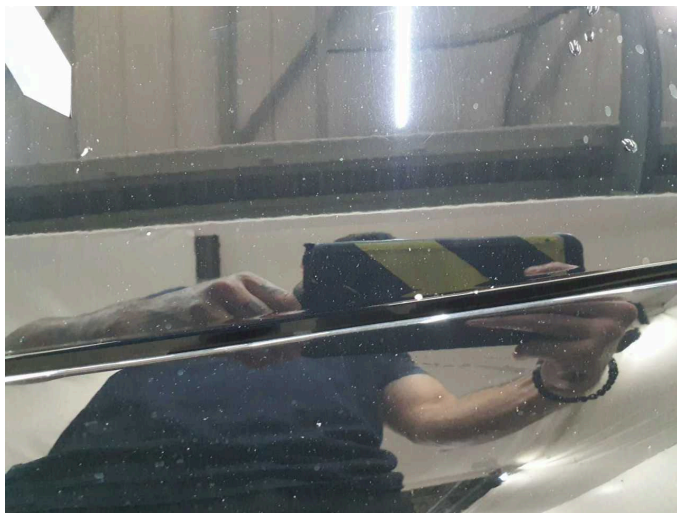
Damage 5: Bonnet: Bonnet - Stone chips - Loss in value



Damage 5: Bonnet: Bonnet - Stone chips - Loss in value



Damage 5: Bonnet: Bonnet - Stone chips - Loss in value



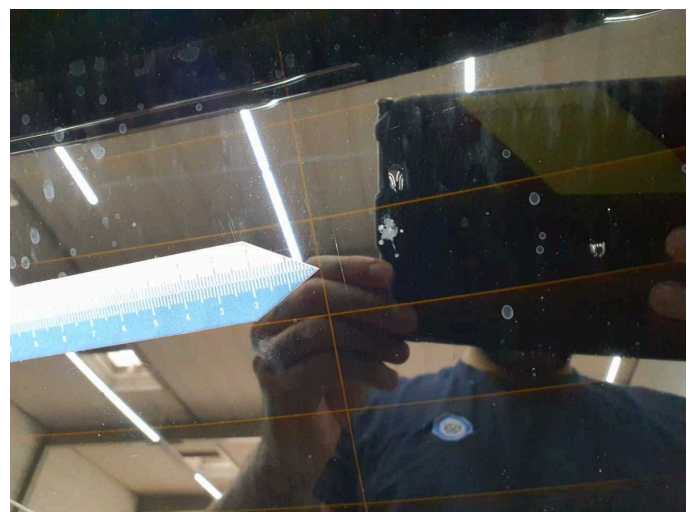
Damage 5: Bonnet: Bonnet - Stone chips - Loss in value



Damage 5: Bonnet: Bonnet - Stone chips - Loss in value



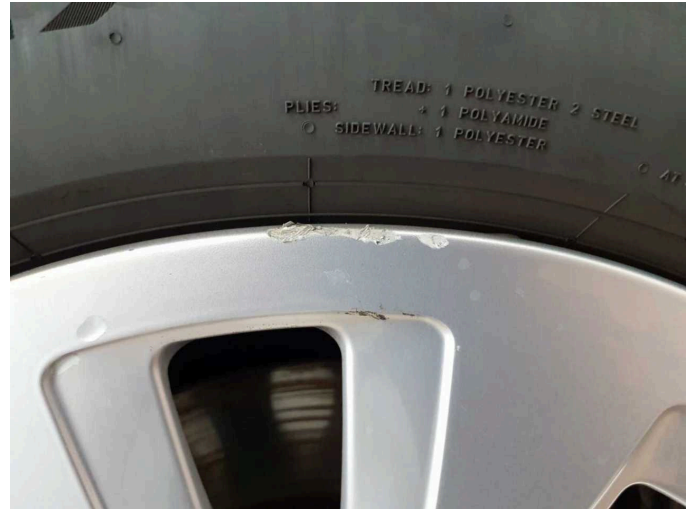
Damage 6: Vehicle glazing: Rear window - Scratch(es) - Loss in value



Damage 6: Vehicle glazing: Rear window - Scratch(es) - Loss in value



Damage 7: Wheel / tyres: Alloy rim - front right side - Scratched - Loss in value



Damage 7: Wheel / tyres: Alloy rim - front right side - Scratched - Loss in value



Damage 8: Boot lid / rear door: Boot lid - dent(s) - Smooth repair work



Damage 8: Boot lid / rear door: Boot lid - dent(s) - Smooth repair work



Damage 8: Boot lid / rear door: Boot lid - dent(s) - Smooth repair work



Damage 9: Braking system: Brake discs and pads - rear (schlechtes Tragbild, Rostrand) - Worn - Replace



Damage 9: Braking system: Brake discs and pads - rear (schlechtes Tragbild, Rostrand) - Worn - Replace



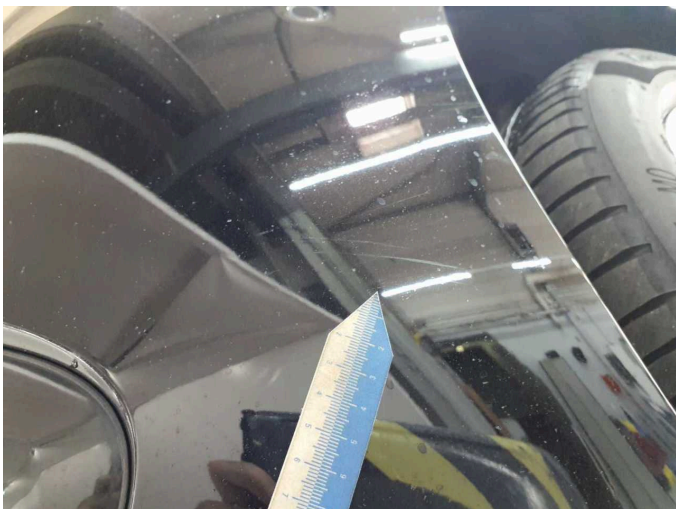
Damage 10: Front bumper: Front bumper - Scratched - Repair and paint



Damage 10: Front bumper: Front bumper - Scratched - Repair and paint



Damage 10: Front bumper: Front bumper - Scratched - Repair and paint



Damage 10: Front bumper: Front bumper - Scratched - Repair and paint



Damage 10: Front bumper: Front bumper - Scratched - Repair and paint



Damage 10: Front bumper: Front bumper - Scratched - Repair and paint



Damage 10: Front bumper: Front bumper - Scratched - Repair and paint



Damage 11: Rear bumper: Rear bumper (inkl. Spoiler) - Scratched - Repair and paint



Damage 11: Rear bumper: Rear bumper (inkl. Spoiler) - Scratched - Repair and paint



Damage 11: Rear bumper: Rear bumper (inkl. Spoiler) - Scratched - Repair and paint



Damage 11: Rear bumper: Rear bumper (inkl. Spoiler) - Scratched - Repair and paint



Damage 11: Rear bumper: Rear bumper (inkl. Spoiler) - Scratched - Repair and paint



Wartungshistorie

(gemäß Auftraggeber Informationen)

Fahrgestellnummer: W1KAH0DB6PF113358

Hersteller / Modell: MERCEDES-BENZ MB C 200 d T 9G-TRONIC

Datum	KM-Stand	Beschreibung
31.03.2025	100.246	Regelwartungsdienst
18.09.2024	76.444	Regelwartungsdienst
09.04.2024	50.394	Regelwartungsdienst
08.12.2023	28.098	Regelwartungsdienst