



Expertise

Protocol number: 41545896  
Order No. / Reference: 25114547  
Inspection date: 15 Sept 2025

Manufacturer: Mercedes-Benz	Model: C 200 d T 9G-TRONIC Avantgarde Advanced
VIN: W1KAH0DB4RF127133	



Vehicle details	
Manufacturer / Type / Model / Equipment	
Mercedes-Benz C 200 d T 9G-TRONIC Avantgarde Advanced	
Vehicle Identification number	W1KAH0DB4RF127133
Mileage (Read)	167,621 km
First registration	26 Jul 2023
Number of holders	1
Power / Engine displacement	120 kw / 1,993 ccm
Fuel type / Cylinder	Hybrid Diesel / E / 4
Gearbox / Number of gears	Automatic / 9
Type of drive	Rear drive
Type of vehicle	Station wagon
Colour / colour code	Graphitgrau Metallic
Doors / Seats	5 / 5
Upholstery type	Cloth
Colour of upholstery	Black-Anthracite
Vehicle with smoke odor	no



## Vehicle details

<b>Maintenance booklet / proof</b>	Non-existent	<b>Next maintenance in</b>	269 Tag(e)
<b>Key is / should be</b>	1 / 2	<b>FZG documents</b>	ZB#2 (B) was available (copy), ZB#1 (S) was not available
		<b>Letter No.</b>	GV723427
<b>Previous damage / Accident</b>	Detectable	<b>Repainting</b>	Detectable
<b>Inspection conditions</b>	sufficient	<b>Lifting equipment / pit</b>	yes
<b>Test drive</b>	Not performed	<b>Engine function test</b>	Performed
<b>Manufacturer key number/ type code number</b>	2222 / BDF 00289		
<b>Emission standard</b>	EURO6;WLTP;AP;PI/CI; M, N1 I	<b>Fine dust sticker</b>	
<b>Permitted total weight</b>	2,400 kg	<b>Empty weight</b>	

## Tyres

### Mounted tyres

#	Tyre size	Type of tyre	Manufacturer	Tread depth
1)	225/50 R17 94W	Summer tyres on Light alloy	Continental	6mm / 6mm
2)	225/50 R17 94W	Summer tyres on Light alloy	Continental	5mm / 5mm

### Replacement

Typ	Tyre size	Type of tyre	Manufacturer	Tread depth
	Tirefit	Expiration date 06/2029		

**Legend: Tread depth information for tires on the left is in the first place, for tires on the right is in the second place on the axle in the direction of travel**

## Equipment

### Standard equipment

- Adaptive High Beam Assistant (automatic high beam switching on and off - camera on the inside of the windscreen - detects oncoming and preceding illuminated vehicles - activated by pressing the steering wheel control lever to the high beam position)
- Airbag: Center airbag
- Airbag: Sidebag for driver and front passenger (combined thorax/pelvis bag)
- Airbag: Windowbag for driver and front passenger
- Exterior mirrors left and right heated and electrically adjustable
- Basic services (breakdown management, maintenance management, accident management, telediagnosis, remote vehicle diagnosis)
- diesel particulate filter
- DYNAMIC SELECT (consisting of driving programs: Comfort, Sport, Eco mode)
- Electronic Stability Program (ESP) (including anti-lock braking system (ABS) and traction control (ASR))
- Chassis: AGILITY CONTROL chassis with selective damping system with lowering
- Fingerprint scanner (color-illuminated fingerprint scanner in the control panel below the central display - two fingerprints can be stored per user - quick access replaces PIN entry - protects personal data such as profiles as well as office and payment functions)
- Heated rear window
- ISOFIX child seat attachment with Top Tether in the rear
- Mechanical child safety lock for the rear doors
- Rear headrests (3)
- Front headrests
- Fuel tank with larger volume 66 l
- Load compartment cover including EASY-PACK safety net
- LED high-performance headlights (low beam with LED projection technology, high beam with LED reflection technology, daytime running lights, position lights and direction indicators in LED technology, adaptive full-LED rear lights with automatic adjustment of light intensity to the surroundings)
- Steering wheel: Multifunction sports steering wheel in leather (sporty 3-spoke design - leather trim - black grained shift paddles - control via touch panels: left: driver display, cruise control and limiter or Active Distance Assist DISTRONIC; right: MBUX multimedia system (e.g., audio volume and track selection, telephony and navigation), touch sensitivity adjustable via central display)
- Center console in high-gloss black
- Airbag for driver and front passenger
- Airbag: Automatic passenger airbag deactivation (The system automatically deactivates the passenger airbag as soon as it detects a rear-facing child seat or registers that the passenger seat is unoccupied. A transponder in the child seat is not required. If it detects that an adult is sitting in the seat, the airbag is automatically activated, reducing the risk of incorrect operation.)
- Ambient lighting with 64 light colors (Three dimming zones (total, ambient, and accent) - Variable brightness adjustment - 64 colors - Ten color moods - Integrated into the ENERGIZING comfort control programs)
- Brake assist, active
- Roof rails in polished aluminum
- Double cup holders at the front
- EASY-PACK tailgate (with electric operation for opening and closing)
- Driver display (31.2 cm (12.3") color LCD display with a resolution of 2,400 x 900 pixels - five different menus with specific content and display styles)
- 4-way electric window lifter
- Velour floor mats
- Speed Limit Assistant (The Speed Limit Assistant detects and displays speed limits.)
- Transmission: Automatic 9-speed, 9G-TRONIC
- Rear window wiper
- Interior headliner fabric crystal grey
- KEYLESS-GO start function
- THERMATIC automatic climate control with 2 climate zones (controlled via the central display or the climate control unit in the center console; sensor system for recording, for example, interior/outside temperature, sunlight, humidity, and dew point; automatic air recirculation (only in conjunction with navigation system); ventilation system consisting of: 3 center vents in the center level and 2 side vents; fine dust activated carbon filter for filtering dust, soot, and pollen; dew point sensor; residual heat function for efficient use of engine waste heat)
- Mercedes-Benz emergency call system (can provide a decisive time advantage in an emergency. A communication module with its own SIM card automatically triggers an emergency call when an accident is detected, which can shorten the time until emergency services arrive. The emergency call can also be triggered manually to organize assistance.)
- Navigation: MBUX Navigation Premium (pre-installation for navigation services - package (tax code) - multimedia / digital content - hard drive navigation - pre-installation for Live Traffic Information - communication module (LTE) for the use of Mercedes me connect services)

- Package: Storage (Luggage net on the left side of the side panel in the trunk or cargo area - rubber tensioning strap on the right in the cargo area (only for the Estate) - folding box under the loading floor (not available for plug-in hybrid vehicles) - double cup holder in the center console for 2 x 750 ml - map pockets on the back of the front seats)
- Package: Interior lighting package (Illuminated glove compartment - Illumination of the wireless mobile interface or the storage compartment for mobile phones - Illumination of the storage compartment in the center console or the double cup holders - Illumination of the storage compartment under the center console armrest - Two vanity lights in front - Two reading lights in the overhead control unit - Two reading lights and interior lighting function in the grab handles in the rear - Illumination of the trunk or cargo area)
- Package: Seat Comfort (various electric and manual adjustment options for the front seats to adapt to the specific body and comfort requirements of the driver and front passenger - electro-pneumatic 4-way lumbar support - electric seat cushion tilt adjustment - electric height adjustment - electric backrest adjustment - electric seat cushion depth adjustment by 6 cm with leg rest pad - mechanical fore/aft adjustment - mechanical headrest adjustment)
- Package: USB (2 USB-C ports under the front center armrest, suitable for data transfer)
- Upholstery: ARTICO imitation leather/fabric
- Radio: Advanced MBUX functions (personalization (profiles) and prediction functions - MBUX voice assistant with natural language understanding - activation via "Hey Mercedes" - MBUX voice assistant learning function through connection to a cloud-based online dictionary - Wi-Fi hotspot - Internet radio)
- Radio accessories: Digital radio (DAB)
- Radio accessory: Communication module (LTE) for using Mercedes me connect services (The communication module with a vehicle-mounted, LTE-capable SIM card offers you added convenience and safety. It continuously connects you to your vehicle—and the vehicle to infrastructure such as the Mercedes-Benz server or the internet. This allows you to use services such as Live Traffic Information from Mercedes me connect.)
- Remote Services (Communication module - Mercedes me Services: - Programming auxiliary heating/ventilation: - Remote door locking and unlocking - Sunroof/windows with remote closing and opening including ventilation function - Personalization - Vehicle location - Vehicle tracking - Geographical vehicle monitoring - Parking service monitoring - Locator function (Remote Vehicle Finder))
- Seats: Folding seat backrests in the rear
- Lane Keeping Assist, active
- Package: Avantgarde Advanced (00U Remote Services - 70B Driver's Safety Vest - P14 AVANTGARDE Interior - P15 AVANTGARDE Exterior - PBG MBUX Navigation Premium - PDA Advanced Package)
- Package: Trunk Comfort (rear seat backrests electrically foldable via switches on the right and left in the control panel in the cargo area - Electric opening and closing of the cargo blind - 12 V socket on the left in the control panel in the cargo area - Reversible mat with one rubberized, non-slip side and one soft velour side)
- Package: Parking package with rear view camera (12 ultrasonic sensors - Rear view camera: integrated in the trunk lid, shown in the central display, trailer mode - Active Parking Assist with PARKTRONIC - detects free parking spaces - assisted parking - visual and acoustic warning of detected obstacles - display of camera and ultrasonic data in the central display - button for the Active Parking Assist - warning of cross traffic - maneuvering braking for reverse maneuvering - drive-away assistance)
- Package: Mirror package (both exterior mirrors electrically foldable (button in the driver's door control panel) - interior mirror and exterior mirror on the driver's side automatically dimmable - ambient lighting of the exterior mirror to illuminate the entry area with projection of the Mercedes-Benz logo)
- Radio: MBUX multimedia system (17.78 cm (7") instrument display - 17.78 cm (7") media display with touch function - touch control buttons on the steering wheel - radio (FM/AM) - USB port in the center console under the armrest - Bluetooth telephony with contact transfer and audio streaming of music files - display of vehicle functions (driver assistance systems, driving programs, and vehicle settings) - favorites storage - smartphone-related voice control)
- Radio accessories: Central display (touch display with LCD technology - 30.2 cm (11.9") screen diagonal - resolution of 1,624 x 1,728 pixels (width x height) - tilted 6° - 7° towards the driver)
- Tire pressure monitoring (TPMS)
- Wheels: 43.2 cm (17") light alloy wheels with 10-twin-spoke design (vanadium silver painted with 225/50 R 17 on 7 J x 17 ET 44.5)
- Windscreen wipers with rain sensor
- Power steering
- Seats: Heated seats for driver and front passenger (Provides pleasant warmth for a high level of seating and travel comfort. In cooler weather, or according to your personal preference, the heated seats quickly bring the seat surfaces and backrests to a comfortable temperature. The intensity can be selected in three levels. Intelligent and convenient: The heated seats automatically switch back on.)
- Phone accessories: Smartphone integration (connects the mobile phone wirelessly to the MBUX multimedia system - displays apps from selected third-party providers - access to current software and data, e.g., for navigation, traffic information, contact information, messaging, telephony, media, IP radio - a user interface optimized for driving - control of smartphone functions via voice control)



- Telephone accessories: Wireless charging system for mobile devices (wireless charging according to the Qi standard for compatible mobile phones - fast connection between the multimedia system and mobile phone via Near Field Communication (NFC) for identification of the mobile device - storage for wireless charging is located in the spontaneous storage compartment in the front of the center console)
- Cruise control
- TIREFIT with tire inflation compressor
- Fully digital instrument display (Freestanding, fully digital instrument display with 26 cm (10.25") color LCD display and a resolution of 1,440 x 540 pixels)
- High-visibility vest for drivers
- Electronic immobilizer
- Decorative elements diamond look silver-grey
- Pre-installation for digital key handover (Share your vehicle key even without a personal handover - Decide who you open the vehicle and hand over the key to - Use the functions conveniently in the Mercedes me app)
- Central locking with remote control

#### Extra equipment

- Trailer hitch with ESP trailer stabilization
- Wheels: 43.2 cm (17") 5-spoke alloy wheels (black painted and high-sheen with 225/50 R 17 on 7 J x 17 ET 44.5)
- Heat-insulating dark tinted glass
- Paint finish: metallic
- Sunroof: Electric panoramic sunroof
- Elimination of type markings on trunk lid
- Heat and noise-insulating acoustic glass (for windshield and front doors)

#### Brief expert findings

Documents submitted	At the time of the inspection, the registration certificate Part 2 (letter) was available, but the registration certificate Part 1 (certificate) was not. (Copy)
VIN comparison	The vehicle identification number (VIN) was read from the vehicle and its conformity with the submitted documents was verified during the inspection by the undersigned.
Inspection	The inspection conditions were sufficient for the assessment of the vehicle. Lifting equipment and a pit were available for examining the vehicle.
Test drive	No test drive/maneuvering was carried out during the inspection of the vehicle.
Engine function test	An engine test run was performed.

#### Value reducing factors

No.	Component group	Description
1	Wheel / tyres	Alloy rim - front left side - Scratched - Loss in value
2	Door - rear right side	Door - Scratch(es) - Paint
3	Door - front left side	Door - Dent / paintcoat damage - Paint
4	Bonnet	Bonnet (+ Harz) - Scratch(es) - Paint
5	Front bumper	Front bumper - Broken / torn - Replace



## Wear and tear

No.	Component group	Description
1	Misc.	Inspection / maintenance - No evidence - No deduction
2	Vehicle glazing	Windscreen - Stone chips - No deduction
3	Body	Body - Stone chips - No deduction
4	Body	Body - Scratch(es) - No deduction
5	Boot lid / rear door	Boot lid - Scratch(es) - No deduction
6	Door - rear left side	Door - Scratch(es) - No deduction

The vehicle shows signs of wear commensurate with its age and use.

## Missing parts

### Description

Equipment - Vehicle key

## Previous damages

No.	Previous damage	Extent of damage (Net)
1	Front, Provided by user / customer, from 13 May 2025	1.210,53 €
2	Rear, Side right, Provided by user / customer, from 24 Aug 2024	9.406,80 €

## Repainting

### No. Repainting

- Side panel - rear right side, Door - front right side, Professionally carried out, Invoice of repair done Non-existent

## Paint coat thickness measurement

Side panel - rear right side	601 µm	Door - front right side	244 µm
------------------------------	--------	-------------------------	--------

## Order/Scope of order

The order was placed to prepare a sales report for the vehicle described. This includes the following:

- Description of core relevant information about the vehicle
- Documentation of equipment features  
(Delivery by third-party service providers)
- Documentation of damage, defects, missing parts
- Documentation of previous damage, unrepaired previous damage, repainting
- a brief visual or functional inspection of the equipment details if possible.  
(Functional tests of driver assistance systems are not included in the scope of services!)
- a photo documentation of the vehicle



## Basis for the order

This product is based on the Alphabet Fuhrpark GmbH guidelines for vehicle returns and valuations. The expert makes the explicit findings in each individual case objectively within the framework of the specified standards based on his or her own expertise.

The vehicle inspection takes place in a disassembled state.

Damage or defects that can only be detected during disassembly/diagnosis work or through advanced knowledge remain within the scope of the prognosis risk. An extended risk exists for concealed defects caused by fraudulent deception and not identifiable by the expert.

Damage or defects resulting from normal use or wear and tear of the vehicle will be accepted according to the applicable standard.

There was no explicit identification or monetary consideration of the expected features within the product.

Features which in their nature and severity slightly exceed normal use but do not constitute unacceptable damage will be documented and identified under signs of use if necessary.

Damage or defects which, according to the underlying standard, can no longer be attributed to normal use or wear and tear are listed in the product under "Depreciating Factors".

Depending on the product specification, a monetary ID can be provided. If this takes place, the costs can be 100% d or pro rata depending on the vehicle's age and mileage.

## Previous damages

According to available information previous damages were repaired at the vehicle. Traces of repairs, which allow conclusions about the area of repair, were not recognizable during the inspection.





Figure 1: Diagonal front (left)



Figure 2: Diagonal front (right)



Figure 3: Diagonal rear (left)



Figure 4: Diagonal rear (right)



Figure 5: Interior - front



Figure 6: Interior - rear





Figure 7: Instrument cluster



Figure 8: Instrument panel



Figure 9: Interior 360° view



Figure 10: Cargo area



Figure 11: VIN



Figure 12: Mounted tyres





Figure 13: Documents



Figure 14: Documents

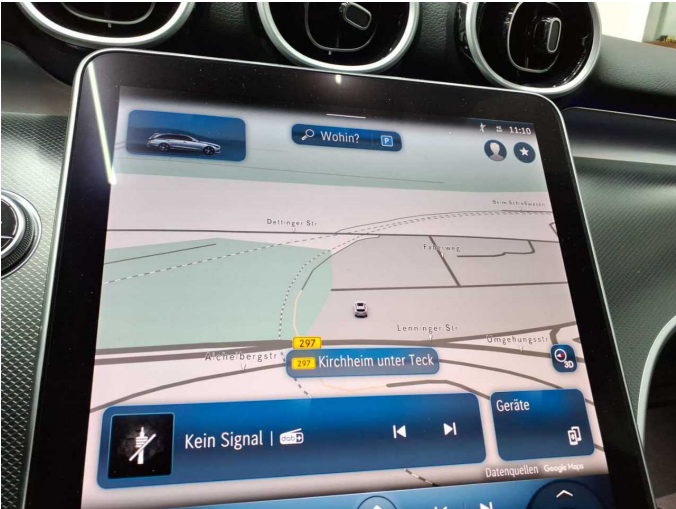


Figure 15: Navigation

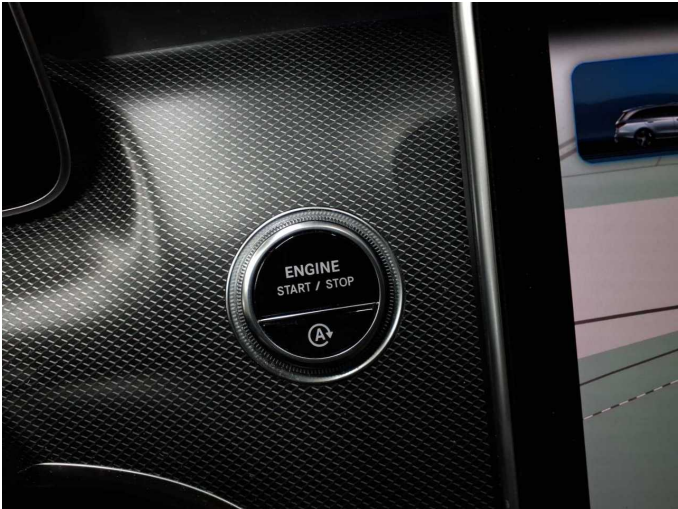


Figure 16: Misc.



Figure 17: Misc.



Figure 18: Misc.





Figure 19: Misc.



Figure 20: Misc.



Figure 21: Misc.



Figure 22: Misc.

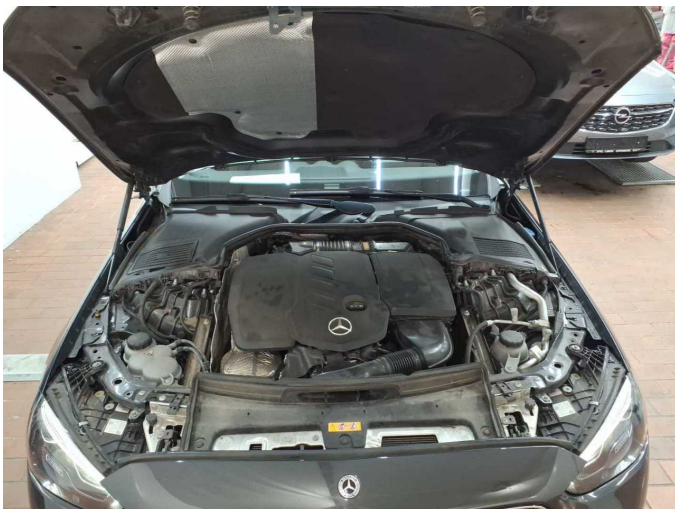


Figure 23: Misc.

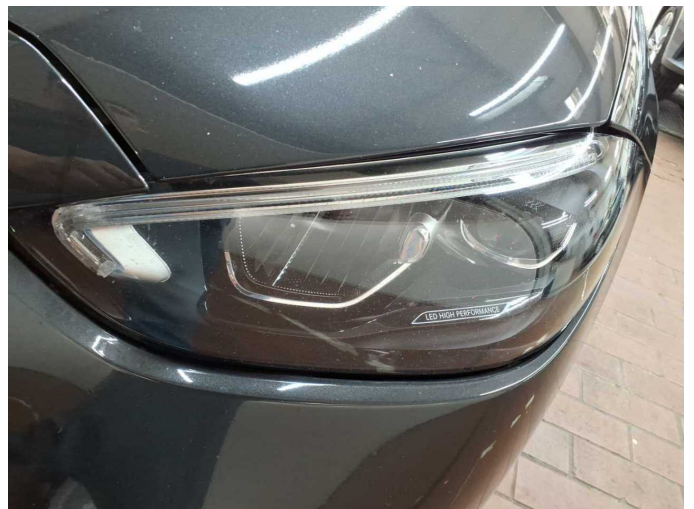


Figure 24: Misc.





Figure 25: Misc.



Figure 26: Misc.

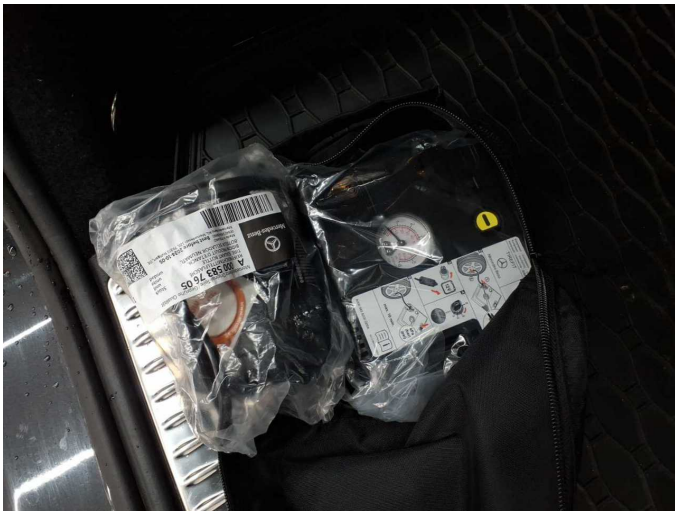


Figure 27: Misc.



Figure 28: Misc.



Figure 29: Misc.



**Damage 1:** Wheel / tyres: Alloy rim - front left side - Scratched - Loss in value





**Damage 1:** Wheel / tyres: Alloy rim - front left side - Scratched - Loss in value



**Damage 2:** Door - rear right side: Door - Scratch(es) - Paint



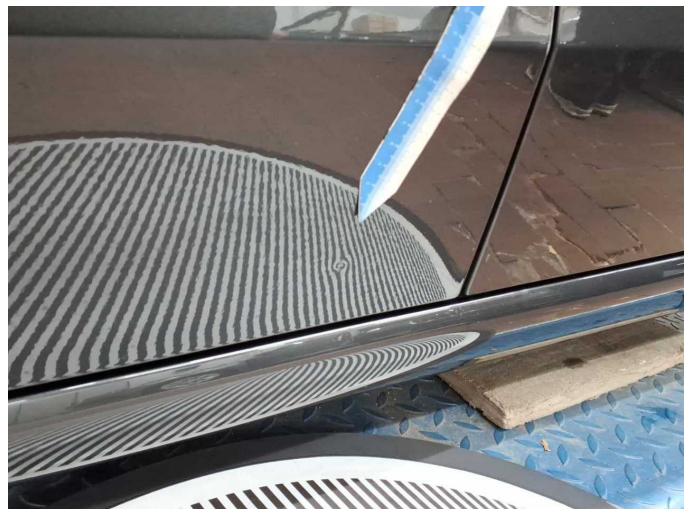
**Damage 2:** Door - rear right side: Door - Scratch(es) - Paint



**Damage 3:** Door - front left side: Door - Dent / paintcoat damage - Paint



**Damage 3:** Door - front left side: Door - Dent / paintcoat damage - Paint

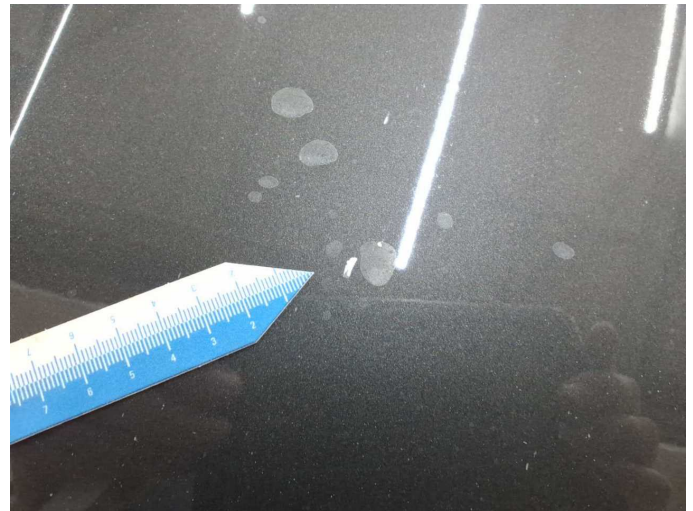


**Damage 3:** Door - front left side: Door - Dent / paintcoat damage - Paint





**Damage 4:** Bonnet: Bonnet (+ Harz) - Scratch(es) - Paint



**Damage 4:** Bonnet: Bonnet (+ Harz) - Scratch(es) - Paint



**Damage 5:** Front bumper: Front bumper - Broken / torn - Replace



**Damage 5:** Front bumper: Front bumper - Broken / torn - Replace



**Damage 5:** Front bumper: Front bumper - Broken / torn - Replace



**Wear and tear 5:** Boot lid / rear door: Boot lid - Scratch(es) - No deduction





**Wear and tear 5:** Boot lid / rear door: Boot lid - Scratch(es) - No deduction



**Wear and tear 6:** Door - rear left side: Door - Scratch(es) - No deduction



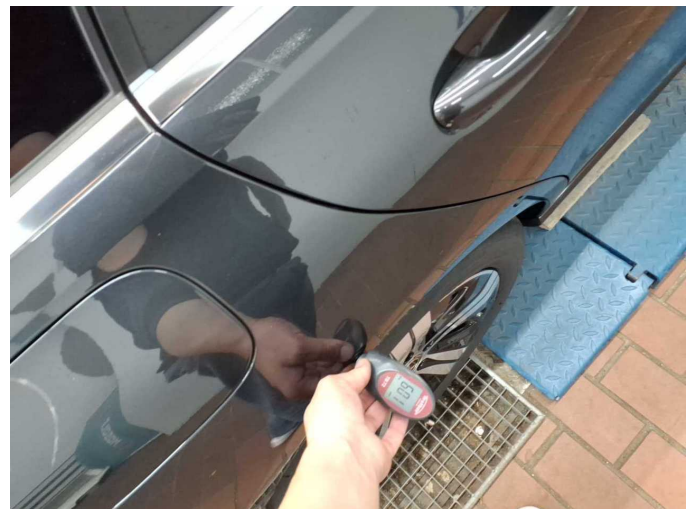
**Wear and tear 6:** Door - rear left side: Door - Scratch(es) - No deduction



**Repainting 1:** Side panel - rear right side, Door - front right side



**Repainting 1:** Side panel - rear right side, Door - front right side



**Repainting 1:** Side panel - rear right side, Door - front right side



**Repainting 1:** Side panel - rear right side, Door - front right side