



Expertise

Protocol number: 41335148
Order No. / Reference: 24992580
Inspection date: 1 Sept 2025

Manufacturer: Mercedes-Benz
VIN: W1KAH0DB1PF090328

Model: C 200 d T 9G-TRONIC



Vehicle details	
Manufacturer / Type / Model / Equipment	
Mercedes-Benz C 200 d T 9G-TRONIC	
Vehicle Identification number	W1KAH0DB1PF090328
Mileage (Read)	102,801 km
First registration	20 Dec 2022
Number of holders	1
Power / Engine displacement	120 kw / 1,993 ccm
Fuel type / Cylinder	Hybrid Diesel / E / 4
Gearbox / Number of gears	Automatic / 9
Type of drive	Rear drive
Type of vehicle	Saloon car
Colour / colour code	GRAPHITGRAU - METALLICLACK
Doors / Seats	5 / 5
Upholstery type	Cloth
Colour of upholstery	Black-Anthracite
Vehicle with smoke odor	no



Vehicle details

Maintenance booklet / proof	digital proof / complete	Next maintenance in	212 Tag(e)
Key is / should be	2 / 2	FZG documents	ZB#2 (B) was available (copy), ZB#1 (S) was not available
		Letter No.	GN012746
Previous damage / Accident	Detectable	Repainting	None detectable
Inspection conditions	sufficient	Lifting equipment / pit	yes
Test drive	Not performed	Engine function test	Performed
Manufacturer key number/ type code number	2222 / BDF 00153		
Emission standard	EURO6;WLTP;AP;PI/CI; M, N1 I	Fine dust sticker	
Permitted total weight	2,400 kg	Empty weight	

Tyres

Mounted tyres

#	Tyre size	Type of tyre	Manufacturer	Tread depth
1)	205/55 R17 91W	Summer tyres on Light alloy	Continental	4mm / 4mm
2)	205/55 R17 91W	Summer tyres on Light alloy	Continental	4mm / 4mm

Additional tyres

#	Tyre size	Type of tyre	Manufacturer	Tread depth
1)	205/55 R17 95V	Winter tyres (Without wheel rim)	Kumho	6mm / 5mm
2)	205/55 R17 95V	Winter tyres (Without wheel rim)	Kumho	0mm / 0mm

Legend: Tread depth information for tires on the left is in the first place, for tires on the right is in the second place on the axle in the direction of travel

Equipment

Standard equipment

- Airbag for driver and front passenger
- Airbag: Center airbag
- Airbag: Sidebag for driver and front passenger (combined thorax/pelvis bag)
- Airbag: Windowbag for driver and front passenger
- Exterior mirrors left and right heated and electrically adjustable
- Basic services (breakdown management, maintenance management, accident management, telediagnosis, remote vehicle diagnosis)
- Double cup holders at the front
- EASY-PACK tailgate (with electric operation for opening and closing)
- Electronic Stability Program (ESP) (including anti-lock braking system (ABS) and traction control (ASR))
- 4-way electric window lifter
- Velour floor mats
- Speed Limit Assistant (The Speed Limit Assistant detects and displays speed limits.)
- Rear window wiper
- Heated rear window
- Interior headliner fabric crystal grey
- ISOFIX child seat attachment with Top Tether in the rear
- Mechanical child safety lock for the rear doors
- Rear headrests (3)
- Front headrests
- Load compartment cover including EASY-PACK safety net
- LED High Performance Headlights (The elements of the LED High Performance Headlights: - Torch and trifunctional light guide for daytime running lights, position lights, and direction indicators - Multi-chamber reflector system with 4 individual reflectors each) for low beam and high beam. The elements of the rear lights in LED technology: - All lighting functions in full LED technology - Tail light - Brake light and parking light - Rear fog light (left-side only) - Direction indicator - Reversing light - 3rd brake light)
- Mercedes-Benz emergency call system (can provide a decisive time advantage in an emergency. A communication module with its own SIM card automatically triggers an emergency call when an accident is detected, which can shorten the time until emergency services arrive. The emergency call can also be triggered manually to organize assistance.)
- Airbag: Automatic passenger airbag deactivation (The system automatically deactivates the passenger airbag as soon as it detects a rear-facing child seat or registers that the passenger seat is unoccupied. A transponder in the child seat is not necessary. If it is detected that an adult is sitting down, the airbag is automatically activated and the risk of incorrect operation is reduced.)
- Brake assist, active
- Roof rails black
- diesel particulate filter
- DYNAMIC SELECT (consisting of driving programs: Comfort, Sport, Eco mode)
- ECO start-stop function
- Chassis: AGILITY CONTROL chassis with selective damping system with lowering
- Front bumper painted in body color (with centrally positioned decorative panel (wing) in silver and diamond-patterned air intakes in black grained)
- Transmission: Automatic 9-speed, 9G-TRONIC
- Rear bumper with black grained diffuser insert (body-colored rear bumper with black grained diffuser insert and invisibly integrated exhaust tailpipes)
- KEYLESS-GO start function
- THERMATIC automatic climate control with 1 climate zone (controlled via the central display or the climate control unit in the center console - sensor system for recording, for example, interior/outside temperature, sunlight, humidity, and dew point - ventilation system consisting of: 3 center vents in the center level and 2 side vents, 2 ventilation openings each in the footwell for the driver and front passenger - fine dust filter for filtering dust, soot, and pollen - dew point sensor, continuous defroster vent under the windshield and 2 fixed defroster vents)
- Steering wheel: Multifunction sports steering wheel in leather (sporty 3-spoke design - leather trim - black grained shift paddles - control via touch panels: left: driver display, cruise control and limiter or Active Distance Assist DISTRONIC; right: MBUX multimedia system (e.g., audio volume and track selection, telephony and navigation), touch sensitivity adjustable via central display)
- Center console in high-gloss black
- Package: Storage (storage compartment with net on the left side of the cargo area - double cup holder in the center console for 2 x 750 ml - rubber strap on the right side of the cargo area - folding box under the cargo floor - 1 additional bag hook on the right side of the cargo area - recess including storage tray on the right side of the cargo area - map pockets on the backs of the front seats - reversible mat in the trunk floor)
- Upholstery: Tandel fabric



- Package: Interior Lighting Package (Illuminated glove compartment - Illumination of the Wireless Mobile Interface or the storage compartment for mobile phones - Illumination of the storage compartment in the center console or the double cup holders - Illumination of the storage compartment under the center console armrest - Two vanity lights in front - Two reading lights in the overhead control panel - Two reading lights in the interior mirror in conjunction with the mirror P - Two reading lights and interior light function in the grab handles in the rear - Illumination of the trunk or cargo area)
- Radio: MBUX (fully digital instrument display with 26 cm (10.25") LCD color display and a resolution of 1,440 x 540 pixels - Bluetooth telephony / audio - Wi-Fi hotspot)
- Radio accessories: Digital radio (DAB)
- Radio accessories: Central display (high-resolution, slightly angled central display with a 24 cm (9.5") screen diagonal, with MBUX multimedia system - touch display with LCD technology)
- Tire pressure monitoring (TPMS)
- Remote Services Plus (Communication module - Mercedes me Services, remote vehicle status query, programming of auxiliary heating/ventilation, remote door locking and unlocking, sunroof/ windows with remote locking and opening including ventilation radio, personalized vehicle location, vehicle tracking, geographic vehicle monitoring, parking service monitoring, location function (Remote Vehicle Finder), notification when driving at speed, Send2Car function)
- Lane Keeping Assist, active
- Cruise control
- Electronic immobilizer
- Decorative elements basic foiling instrument panel
- Radio: Advanced MBUX functions (personalization (profiles) and prediction functions - MBUX voice assistant "LINGUATRONIC" with natural language understanding - activation via Hey Mercedes - MBUX voice assistant learning function through connection to a cloud-based online dictionary, Mercedes me connect service available free of charge for 3 years from activation - Wi-Fi hotspot - Internet radio)
- Radio accessory: Communication module (LTE) for using Mercedes me connect services (The communication module with a vehicle-mounted, LTE-capable SIM card offers you added convenience and safety. It continuously connects you to your vehicle—and the vehicle to infrastructure such as the Mercedes-Benz server or the internet. This allows you to use services such as Live Traffic Information from Mercedes me connect.)
- Wheels: 43.2 cm (17") alloy wheels in multi-spoke design (painted vanadium silver with 205/55 R 17 on 6.5 J x 17 ET 34.5)
- Windscreen wipers with rain sensor
- Power steering
- Seats: Folding seat backrests in the rear
- Seats: Front seats mechanically adjustable (lengthwise and height)
- High-visibility vest for drivers
- Central locking with remote control

Extra equipment

- Paint finish: metallic
- Package: Comfort package (seat heating for driver and front passenger - 4-way lumbar support)
- Package: Park (12 ultrasonic sensors - Rear view camera - Active Parking Assist with PARKTRONIC: detects free parking spaces, assisted parking, visual and acoustic warnings, display of camera and ultrasonic data on the media display - Cross traffic warning: can provide a visual and acoustic warning when cross traffic is detected while reversing out of a parking space and, if necessary, automatically initiate emergency braking - Reverse maneuvering braking: can trigger a braking action - Drive-away assistance)
- Elimination of type markings on trunk lid
- Heat-insulating dark tinted glass
- Package: Business (Mirror package: Electrically folding exterior mirrors, the automatic dimming function protects your eyes, while the ambient lighting - with projection of the Mercedes-Benz logo - Comfort package: Seat heating for driver and front passenger, 4-way lumbar support - Parking package: Parking package with rear view camera - Infotainment package: MBUX Navigation Premium, Traffic Sign Assistant, Smartphone Integration - Fuel tank with larger capacity)
- Package: Mirror package (both exterior mirrors electrically foldable (button in the driver's door control panel) - interior mirror and exterior mirror on the driver's side automatically dimmable - ambient lighting of the exterior mirror to illuminate the entry area with projection of the Mercedes-Benz logo)



Brief expert findings

Documents submitted	At the time of the inspection, the registration certificate Part 2 (letter) was available, but the registration certificate Part 1 (certificate) was not. (Copy)
VIN comparison	The vehicle identification number (VIN) was read from the vehicle and its conformity with the submitted documents was verified during the inspection by the undersigned.
Inspection	The inspection conditions were sufficient for the assessment of the vehicle. Lifting equipment and a pit were available for examining the vehicle.
Test drive	No test drive/maneuvering was carried out during the inspection of the vehicle.
Engine function test	An engine test run was performed.

Value reducing factors

No.	Component group	Description
1	Interior	Interior - Soiled - Conditioning
2	Door - front left side	Door - dent(s) - Smart repair
3	Wheel / tyres	Alloy rim - rear right side - Scratched - Smart repair
4	Front bumper	Front bumper - Scratched - Smart repair
5	Door - front right side	Door - Stone chips - Smart repair
6	Door - rear right side	Door (Dichtung) - Broken / torn - Replace
7	Door - rear left side	Door (Dichtung) - Broken / torn - Replace
8	Bonnet	Bonnet - Scratch(es) - Paint
9	Side panel - rear right side	Side panel - Dent / paintcoat damage - Paint

Wear and tear

No.	Component group	Description
1	Misc.	Inspection / maintenance - No evidence - No deduction
2	2nd wheel set	3 tyres (Nicht im Lieferumfang enthalten) - Worn - No deduction
3	Body	Body - Stone chips - No deduction
4	Body	Body - Scratch(es) - No deduction
5	Vehicle glazing	Windscreen - Stone chips - No deduction

The vehicle shows signs of wear commensurate with its age and use.

Previous damages

No.	Previous damage	Extent of damage (Net)
1	Roof, Front, Provided by user / customer, from 6 Aug 2024	2.751,67 €

Order/Scope of order

The order was placed to prepare a sales report for the vehicle described. This includes the following:

- Description of core relevant information about the vehicle
- Documentation of equipment features
(Delivery by third-party service providers)
- Documentation of damage, defects, missing parts
- Documentation of previous damage, unrepaired previous damage, repainting
- a brief visual or functional inspection of the equipment details if possible.
(Functional tests of driver assistance systems are not included in the scope of services!)
- a photo documentation of the vehicle



Basis for the order

This product is based on the Alphabet Fuhrpark GmbH guidelines for vehicle returns and valuations. The expert makes the explicit findings in each individual case objectively within the framework of the specified standards based on his or her own expertise.

The vehicle inspection takes place in a disassembled state.

Damage or defects that can only be detected during disassembly/diagnosis work or through advanced knowledge remain within the scope of the prognosis risk. An extended risk exists for concealed defects caused by fraudulent deception and not identifiable by the expert.

Damage or defects resulting from normal use or wear and tear of the vehicle will be accepted according to the applicable standard.

There was no explicit identification or monetary consideration of the expected features within the product.

Features which in their nature and severity slightly exceed normal use but do not constitute unacceptable damage will be documented and identified under signs of use if necessary.

Damage or defects which, according to the underlying standard, can no longer be attributed to normal use or wear and tear are listed in the product under "Depreciating Factors".

Depending on the product specification, a monetary ID can be provided. If this takes place, the costs can be 100% d or pro rata depending on the vehicle's age and mileage.

Previous damages

According to available information previous damages were repaired at the vehicle. Traces of repairs, which allow conclusions about the area of repair, were not recognizable during the inspection.



Figure 1: Diagonal front (left)



Figure 2: Diagonal front (right)



Figure 3: Diagonal rear (left)



Figure 4: Diagonal rear (right)



Figure 5: Interior - front



Figure 6: Interior - rear



Figure 7: Instrument cluster



Figure 8: Instrument panel



Figure 9: interior 360° view



Figure 10: Cargo area



Figure 11: VIN



Figure 12: Mounted tyres



Figure 13: Documents



Figure 14: Documents



Figure 15: Additional tyres

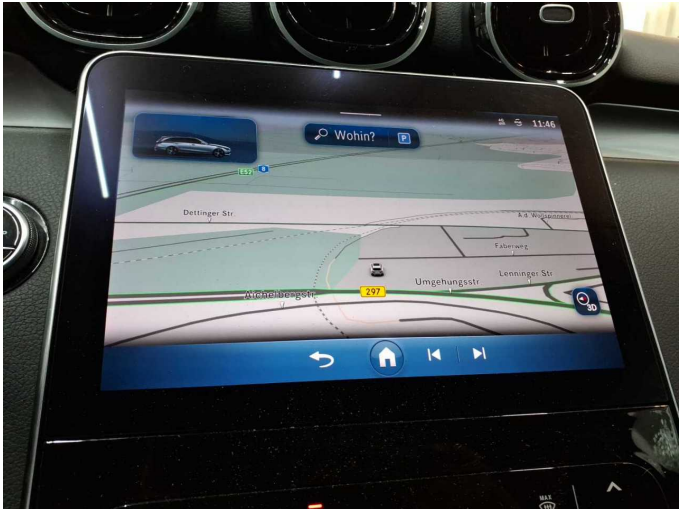


Figure 16: Navigation



Figure 17: Misc.

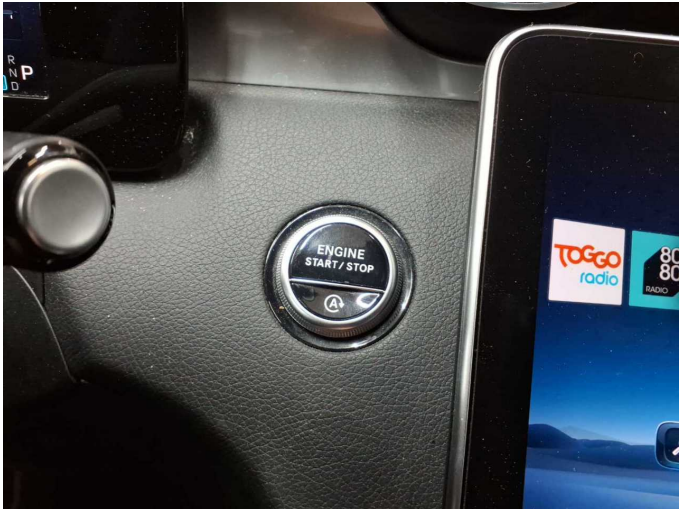


Figure 18: Misc.



Figure 19: Misc.

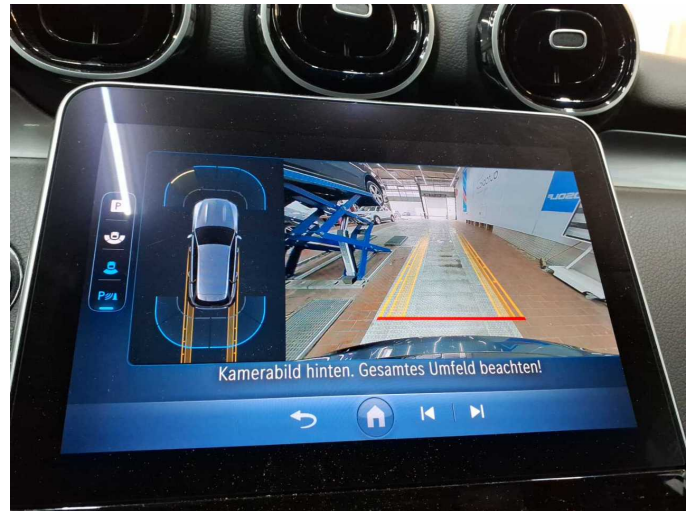


Figure 20: Misc.



Figure 21: Misc.



Figure 22: Misc.



Figure 23: Misc.

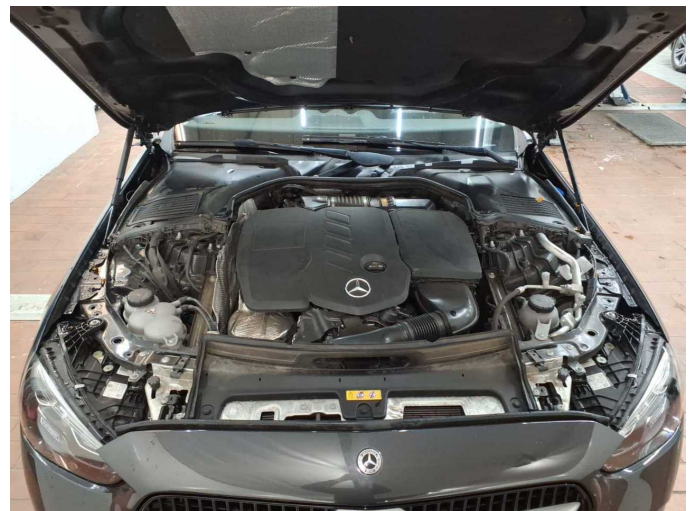


Figure 24: Misc.



Figure 25: Misc.



Figure 26: Misc.



Figure 27: Misc.



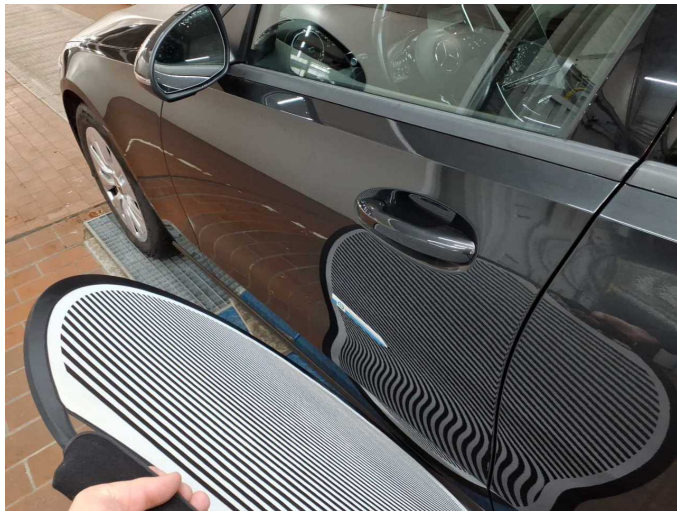
Figure 28: Misc.



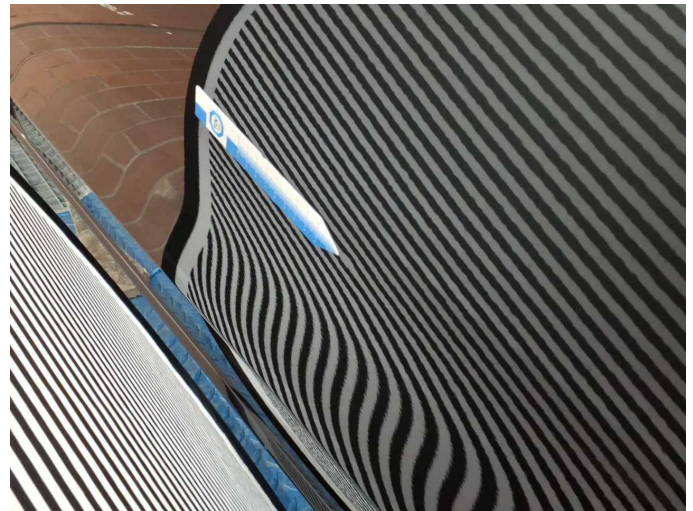
Damage 1: Interior: Interior - Soiled - Conditioning



Damage 1: Interior: Interior - Soiled - Conditioning



Damage 2: Door - front left side: Door - dent(s) - Smart repair



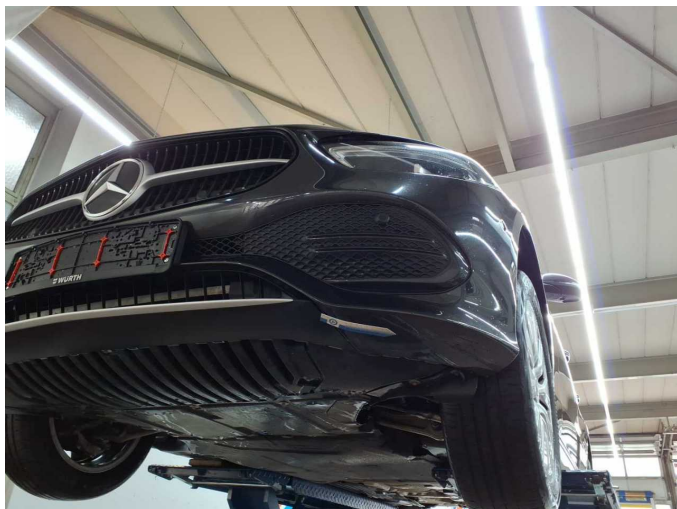
Damage 2: Door - front left side: Door - dent(s) - Smart repair



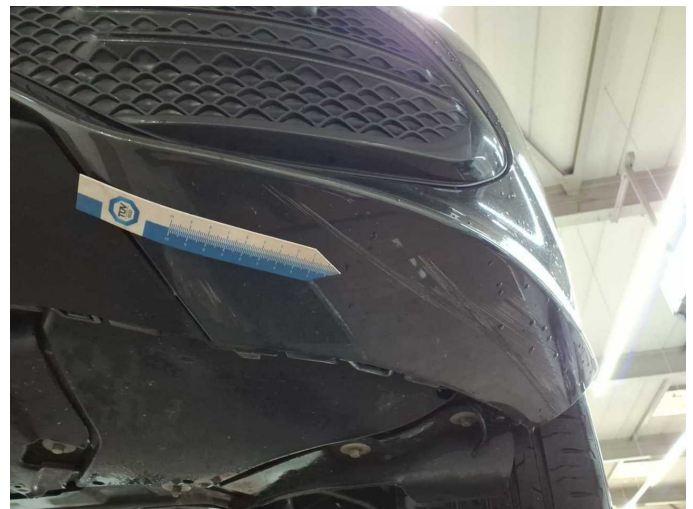
Damage 3: Wheel / tyres: Alloy rim - rear right side - Scratched - Smart repair



Damage 3: Wheel / tyres: Alloy rim - rear right side - Scratched - Smart repair



Damage 4: Front bumper: Front bumper - Scratched - Smart repair



Damage 4: Front bumper: Front bumper - Scratched - Smart repair



Damage 5: Door - front right side: Door - Stone chips - Smart repair



Damage 5: Door - front right side: Door - Stone chips - Smart repair



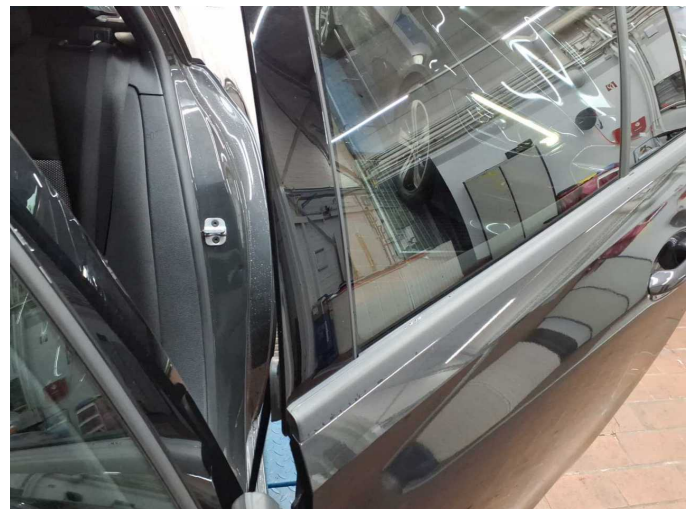
Damage 6: Door - rear right side: Door (Dichtung) - Broken / torn - Replace



Damage 6: Door - rear right side: Door (Dichtung) - Broken / torn - Replace



Damage 7: Door - rear left side: Door (Dichtung) - Broken / torn - Replace



Damage 7: Door - rear left side: Door (Dichtung) - Broken / torn - Replace



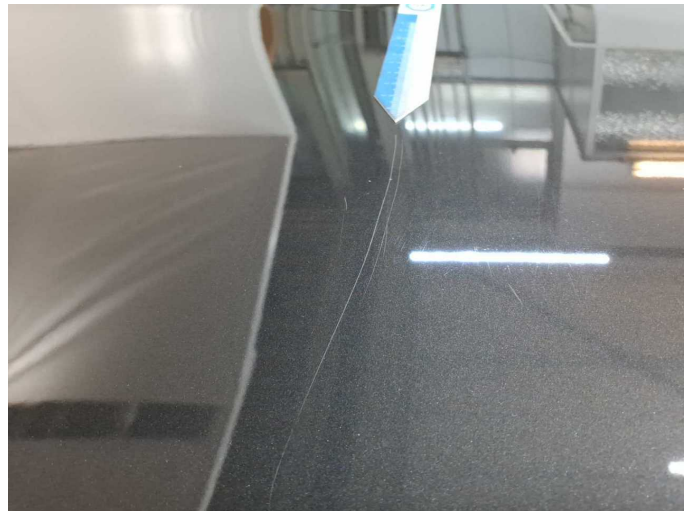
Damage 7: Door - rear left side: Door (Dichtung) - Broken / torn - Replace



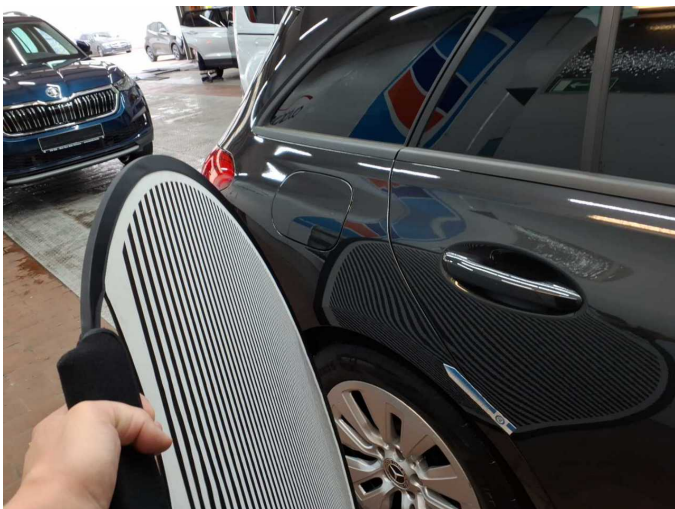
Damage 8: Bonnet: Bonnet - Scratch(es) - Paint



Damage 8: Bonnet: Bonnet - Scratch(es) - Paint



Damage 8: Bonnet: Bonnet - Scratch(es) - Paint



Damage 9: Side panel - rear right side: Side panel - Dent / paintcoat damage - Paint



Damage 9: Side panel - rear right side: Side panel - Dent / paintcoat damage - Paint



Damage 9: Side panel - rear right side: Side panel - Dent / paintcoat damage - Paint



Damage 9: Side panel - rear right side: Side panel - Dent / paintcoat damage - Paint