



Expertise

Protocol number: 41188523
Order No. / Reference: 24995196
Inspection date: 15 Aug 2025

Manufacturer: Mercedes-Benz
VIN: W1KAH0DB1PF070418

Model: C 200 d T 9G-TRONIC Avantgarde



Vehicle details	
Manufacturer / Type / Model / Equipment	
Mercedes-Benz C 200 d T 9G-TRONIC Avantgarde	
Vehicle Identification number	W1KAH0DB1PF070418
Mileage (Read)	55,879 km
First registration	24 Aug 2022
Number of holders	1
Power / Engine displacement	120 kw / 1,993 ccm
Fuel type / Cylinder	Hybrid Diesel / E / 4
Gearbox / Number of gears	Automatic / 9
Type of drive	Rear drive
Type of vehicle	Station wagon
Colour / colour code	SCHWARZ - UNILACK
Doors / Seats	5 / 5
Upholstery type	Cloth / leather combination
Colour of upholstery	Black
Type of use	rental car



Vehicle details

Maintenance booklet / proof	digital proof / complete	Next maintenance in	135 Tag(e)
Last maintenance on / at	11/2024 at 43,663 km		
Key is / should be	2 / 2	FZG documents	ZB#2 (B) was available (copy), ZB#1 (S) was not available
		Letter No.	GJ510743
Previous damage / Accident	None detectable	Repainting	None detectable
Inspection conditions	sufficient	Lifting equipment / pit	yes
Test drive	Not performed	Engine function test	Performed
Manufacturer key number/ type code number	2222 / BDF 00145		
Emission standard	EURO6;WLTP;AP;PI/CI; M, N1 I	Fine dust sticker	
Permitted total weight	2,400 kg	Empty weight	

Tyres

Mounted tyres

#	Tyre size	Type of tyre	Manufacturer	Tread depth
1)	225/50 R17 98Y	Summer tyres on Light alloy	Pirelli	5mm / 5mm
2)	225/50 R17 98Y	Summer tyres on Light alloy	Pirelli	5mm / 5mm

Additional tyres

#	Tyre size	Type of tyre	Manufacturer	Tread depth
1)	225/50 R17 98H	Winter tyres on Light alloy	Goodyear	5mm / 5mm
2)	225/50 R17 98H	Winter tyres on Light alloy	Goodyear	5mm / 5mm

Replacement

Typ	Tyre size	Type of tyre	Manufacturer	Tread depth
	Tirefit	Expiration date 08/2027		

Legend: Tread depth information for tires on the left is in the first place, for tires on the right is in the second place on the axle in the direction of travel

Equipment

Standard equipment

- Airbag for driver and front passenger
- Airbag: Center airbag
- Airbag: Windowbag for driver and front passenger
- Exterior mirrors left and right heated and electrically adjustable
- Roof rails in polished aluminum
- Double cup holders at the front
- EASY-PACK tailgate
- Electronic Stability Program (ESP)
- Velour floor mats
- Transmission: Automatic 9-speed, 9G-TRONIC
- Rear bumper in body color
- Interior headliner fabric crystal grey
- KEYLESS-GO start function
- THERMATIC automatic climate control with 1 climate zone
- Front headrests
- Load compartment cover including EASY-PACK safety net
- Steering wheel: Multifunction sports steering wheel in leather
- Package: Storage
- Package: Interior lighting package
- Radio: Advanced functions MBUX
- Radio accessories: Digital radio (DAB)
- Radio accessories: Central display
- Tire pressure monitoring (TPMS)
- Windscreen wipers with rain sensor
- Seats: Folding seat backrests in the rear
- Cruise control
- Electronic immobilizer
- Decorative elements diamond look silver-grey
- Airbag: Automatic passenger airbag deactivation
- Airbag: Sidebag for driver and front passenger
- Ambient lighting with 64 light colors
- Basic services
- Brake assist, active
- diesel particulate filter
- DYNAMIC SELECT
- ECO start-stop function
- 4-way electric window lifter
- Speed Limit Assistant
- Rear window wiper
- Heated rear window
- ISOFIX child seat attachment with Top Tether in the rear
- Mechanical child safety lock for the rear doors
- Rear headrests (3)
- Paint finish: Uni
- LED high-performance headlights
- Mercedes-Benz emergency call system
- Center console in high-gloss black
- Package: AVANTGARDE Exterior
- Upholstery: ARTICO imitation leather/fabric
- Radio: MBUX
- Radio accessories: Communication module (LTE) for the use of Mercedes me connect services
- Remote Services Plus
- Power steering
- Lane Keeping Assist, active
- High-visibility vest for drivers
- Central locking with remote control

Extra equipment

- Center console diamond look silver gray
- Elimination of type markings on trunk lid
- Heat and noise-insulating acoustic glass (for windshield and front doors)
- Heat-insulating dark tinted glass
- Package: Advanced Comfort Package
- Package: Business (for Avantgarde Exterior (P15) or AMG Line Exterior (P31)) (Mirror Package: Electrically folding exterior mirrors, automatic dimming function, ambient lighting - with projection of the Mercedes-Benz logo - Advanced Comfort Package: Seat heating for driver and front passenger, 4-way lumbar support, Seat Comfort Package - Parking Package: Parking package with rearview camera - Infotainment Package: MBUX Navigation Premium, Traffic Sign Assistant, Smartphone Integration - Fuel tank with larger capacity)
- Package: Infotainment package
- Sunroof: Electric panoramic sunroof
- Package: Lights (Adaptive High Beam Assistant - automatic high beam switching on and off, camera on the inside of the windshield, detects oncoming and preceding illuminated vehicles, activated by pressing the steering wheel control lever to the high beam position)
- Package: Park
- Radio accessories: Advanced sound system (with 9 speakers and 225 watts of system power)
- Seats: Comfort seats
- URBAN GUARD Vehicle Protection Plus (burglary and theft alarm system - towing protection with visual and acoustic warning when a change in position is detected - alarm horn - interior security (triggered when movement is detected in the interior) - vehicle theft assistance (theft assistance), free of charge for 3 years from activation - emergency key deactivation, free of charge for 3 years from activation - collision detection, free of charge for 3 years from activation - URBAN GUARD label on the front side windows)



- TIREFIT with tire inflation compressor

- Wheels: 43.2 cm (17") light alloy wheels in 5-spoke design

Brief expert findings

Documents submitted	At the time of the inspection, the registration certificate Part 2 (letter) was available, but the registration certificate Part 1 (certificate) was not. (Copy)
VIN comparison	The vehicle identification number (VIN) was read from the vehicle and its conformity with the submitted documents was verified during the inspection by the undersigned.
Inspection	The inspection conditions were sufficient for the assessment of the vehicle. Lifting equipment and a pit were available for examining the vehicle.
Test drive	No test drive/maneuvering was carried out during the inspection of the vehicle.
Engine function test	An engine test run was performed.

Value reducing factors

No.	Component group	Description
1	Side panel - rear right side	Side panel - Scratch(es) - Smart repair
2	Door - front left side	Door edge - Scratch(es) - Smart repair
3	Boot lid / rear door	Boot lid - dent(s) - Smooth repair work
4	Side panel - rear left side	Side panel - Scratch(es) - Smart repair
5	Door - front left side	Door - Dent / paintcoat damage - Repair and paint
6	Bonnet	Bonnet - Stone chips - Paint
7	Rear bumper	Rear bumper - Damaged - Replace

Wear and tear

No.	Component group	Description
1	Door - rear left side	Door - Scratch(es) - No deduction

The vehicle shows signs of wear commensurate with its age and use.

Order/Scope of order

The order was placed to prepare a sales report for the vehicle described. This includes the following:

- Description of core relevant information about the vehicle
- Documentation of equipment features
(*Delivery by third-party service providers*)
- Documentation of damage, defects, missing parts
- Documentation of previous damage, unrepaired previous damage, repainting
- a brief visual or functional inspection of the equipment details if possible.
(*Functional tests of driver assistance systems are not included in the scope of services!*)
- a photo documentation of the vehicle



Basis for the order

This product is based on the Alphabet Fuhrpark GmbH guidelines for vehicle returns and valuations. The expert makes the explicit findings in each individual case objectively within the framework of the specified standards based on his or her own expertise.

The vehicle inspection takes place in a disassembled state.

Damage or defects that can only be detected during disassembly/diagnosis work or through advanced knowledge remain within the scope of the prognosis risk. An extended risk exists for concealed defects caused by fraudulent deception and not identifiable by the expert.

Damage or defects resulting from normal use or wear and tear of the vehicle will be accepted according to the applicable standard.

There was no explicit identification or monetary consideration of the expected features within the product.

Features which in their nature and severity slightly exceed normal use but do not constitute unacceptable damage will be documented and identified under signs of use if necessary.

Damage or defects which, according to the underlying standard, can no longer be attributed to normal use or wear and tear are listed in the product under "Depreciating Factors".

Depending on the product specification, a monetary ID can be provided. If this takes place, the costs can be 100% d or pro rata depending on the vehicle's age and mileage.

Previous damages

Apparently, no repaired previous damage could be found on the vehicle.

Comments

- Winterradsatz ist kein Bestandteil des Auslieferumfangs



Figure 1: Diagonal front (left)



Figure 2: Diagonal front (right)



Figure 3: Diagonal rear (left)



Figure 4: Diagonal rear (right)



Figure 5: Interior - front



Figure 6: Interior - rear



Figure 7: Instrument cluster



Figure 8: Instrument cluster



Figure 9: Instrument panel



Figure 10: interior 360° view ([Online link](#))



Figure 11: Cargo area

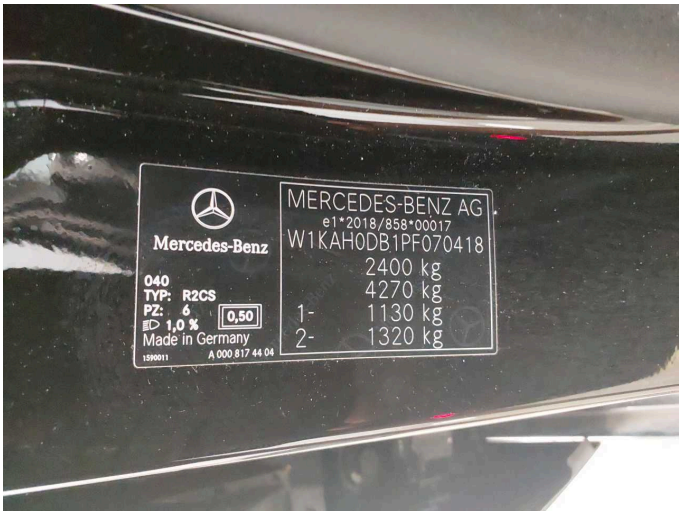


Figure 12: VIN



Figure 13: Mounted tyres

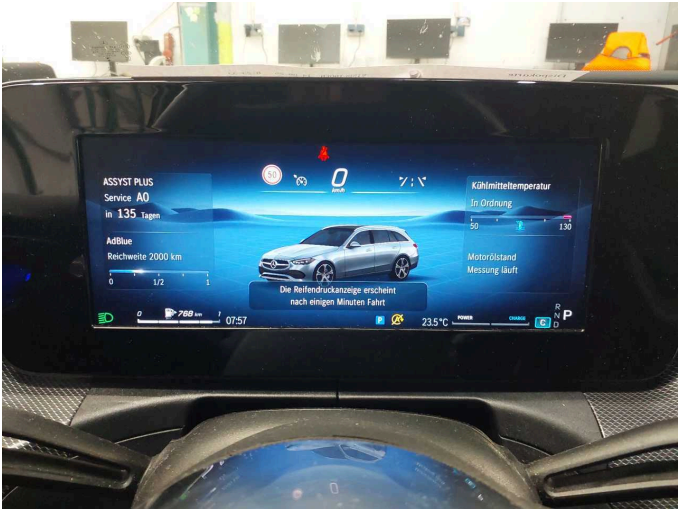


Figure 14: Documents



Figure 15: Documents



Figure 16: Additional tyres

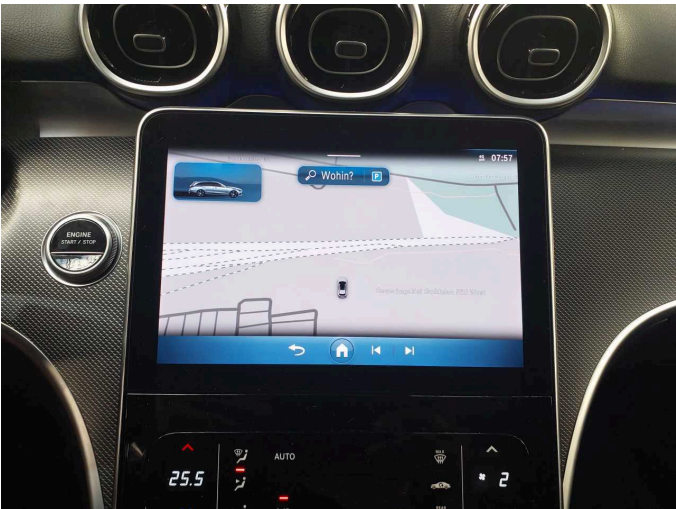


Figure 17: Navigation



Figure 18: Misc.

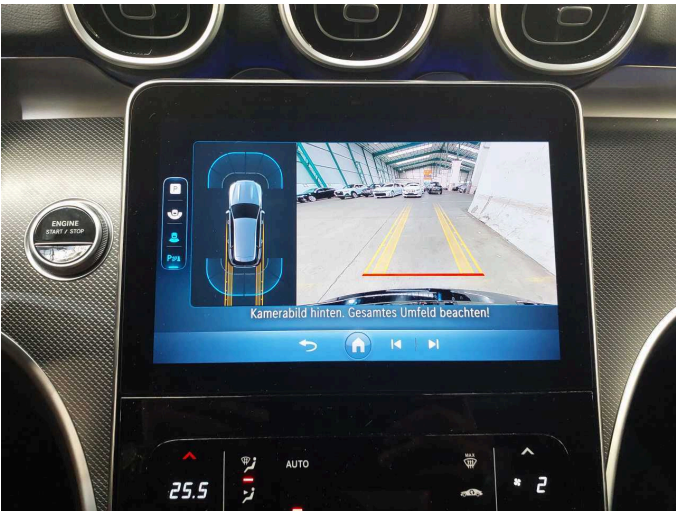


Figure 19: Misc.



Figure 20: Misc.



Figure 21: Misc.



Figure 22: Misc.



Figure 23: Misc.



Figure 24: Misc.



Figure 25: Misc.



Figure 26: Misc.



Figure 27: Misc.



Figure 28: Misc.



Figure 29: Misc.

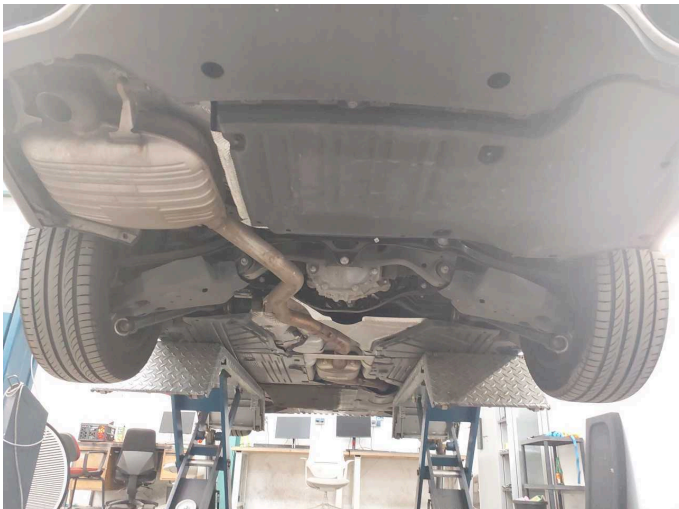


Figure 30: Misc.



Damage 1: Side panel - rear right side: Side panel - Scratch(es) - Smart repair



Damage 1: Side panel - rear right side: Side panel - Scratch(es) - Smart repair



Damage 2: Door - front left side: Door edge - Scratch(es) - Smart repair



Damage 2: Door - front left side: Door edge - Scratch(es) - Smart repair



Damage 2: Door - front left side: Door edge - Scratch(es) - Smart repair



Damage 3: Boot lid / rear door: Boot lid - dent(s) - Smooth repair work



Damage 3: Boot lid / rear door: Boot lid - dent(s) - Smooth repair work



Damage 3: Boot lid / rear door: Boot lid - dent(s) - Smooth repair work



Damage 4: Side panel - rear left side: Side panel - Scratch(es) - Smart repair



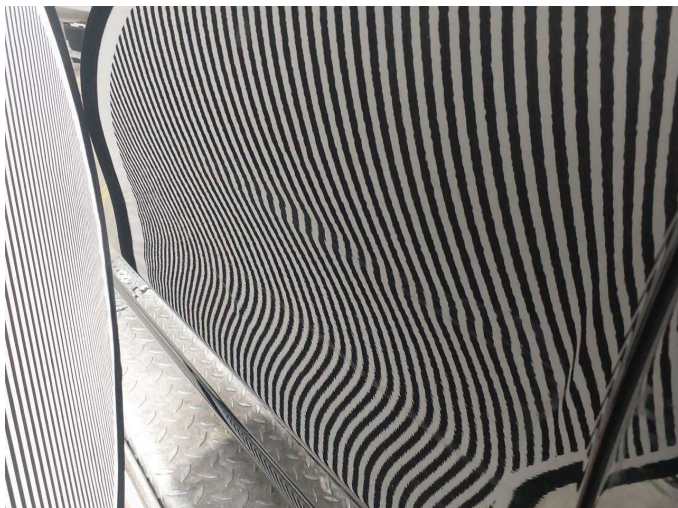
Damage 4: Side panel - rear left side: Side panel - Scratch(es) - Smart repair



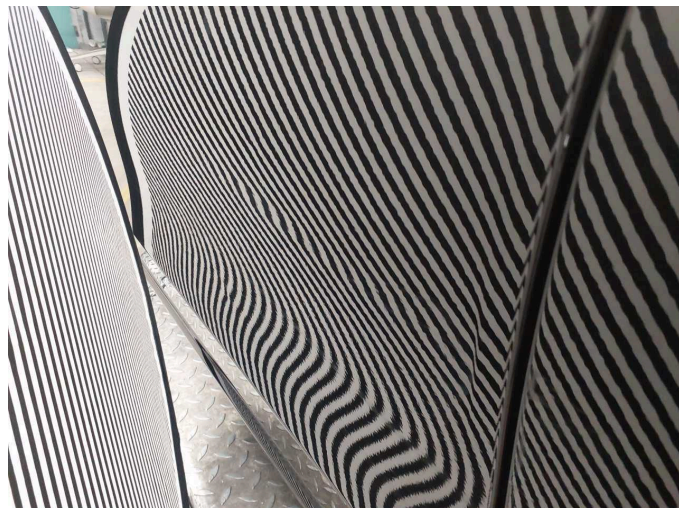
Damage 4: Side panel - rear left side: Side panel - Scratch(es) - Smart repair



Damage 5: Door - front left side: Door - Dent / paintcoat damage - Repair and paint



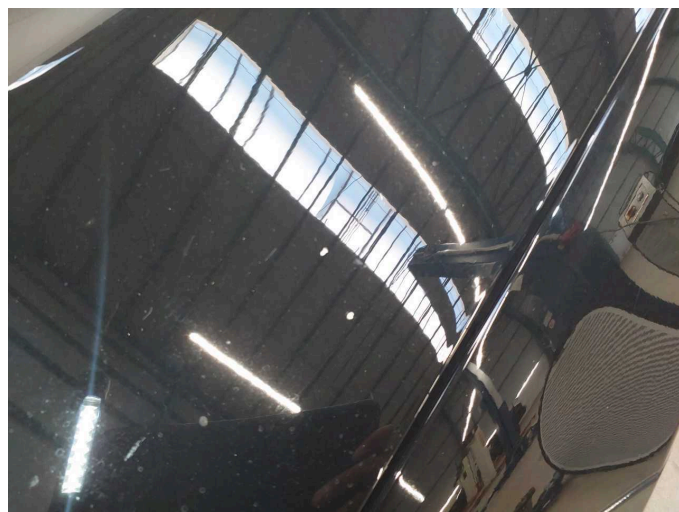
Damage 5: Door - front left side: Door - Dent / paintcoat damage - Repair and paint



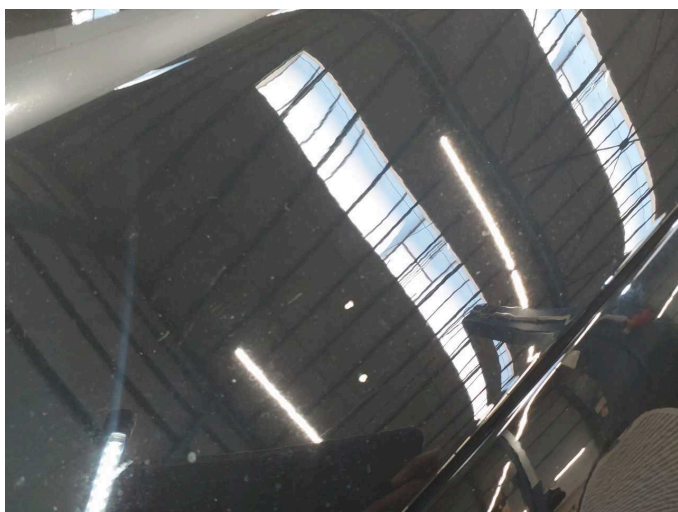
Damage 5: Door - front left side: Door - Dent / paintcoat damage - Repair and paint



Damage 6: Bonnet: Bonnet - Stone chips - Paint



Damage 6: Bonnet: Bonnet - Stone chips - Paint



Damage 6: Bonnet: Bonnet - Stone chips - Paint



Damage 7: Rear bumper: Rear bumper - Damaged - Replace



Damage 7: Rear bumper: Rear bumper - Damaged - Replace



Damage 7: Rear bumper: Rear bumper - Damaged - Replace



Damage 7: Rear bumper: Rear bumper - Damaged - Replace



Damage 7: Rear bumper: Rear bumper - Damaged - Replace



Damage 7: Rear bumper: Rear bumper - Damaged - Replace



Wear and tear 1: Door - rear left side: Door - Scratch(es) - No deduction



Wear and tear 1: Door - rear left side: Door - Scratch(es) - No deduction



Wear and tear 1: Door - rear left side: Door - Scratch(es) - No deduction



Wear and tear 1: Door - rear left side: Door - Scratch(es) - No deduction



Wear and tear 1: Door - rear left side: Door - Scratch(es) - No deduction



Wartungshistorie

(gemäß Auftraggeber Informationen)

Fahrgestellnummer: W1KAH0DB1PF070418

Hersteller / Modell: MERCEDES-BENZ MB C 200 d T 9G-TRONIC Avantgarde

Datum	KM-Stand	Beschreibung
20.11.2024	43.663	Regelwartungsdienst
16.10.2023	18.817	Regelwartungsdienst