



Expertise

Protocol number: 41226811
Order No. / Reference: 25128131
Inspection date: 25 Aug 2025

Manufacturer: Mercedes-Benz	Model: EQC 400 4Matic Electric Art
VIN: W1K8P9AB2PF065819	



Vehicle details	
Manufacturer / Type / Model / Equipment	
Mercedes-Benz EQC 400 4Matic Electric Art	
Vehicle Identification number	W1K8P9AB2PF065819
Mileage (Read)	35,619 km
First registration	14 Apr 2023
Number of holders	2
Next periodical technical inspection	04/2027
(Report not on hand)	
Power / Engine displacement	145 kw /
Fuel type / Cylinder	Electric / 0
Gearbox / Number of gears	Direct drive / 1
Type of drive	All-wheel drive
Type of vehicle	SUV
Colour / colour code	Schwarz Uni
Doors / Seats	5 / 5
Upholstery type	Leather
Colour of upholstery	Black-Anthracite
Vehicle with smoke odor	no



Vehicle details

Maintenance booklet / proof	digital proof / complete	Next maintenance in	0 km
Last maintenance on / at	08/2024 at 29,121 km		
Key is / should be	2 / 2	FZG documents	ZB#2 (B) was available (copy), ZB#1 (S) was not available
		Letter No.	GS703227
Previous damage / Accident	None detectable	Repainting	None detectable
Inspection conditions	sufficient	Lifting equipment / pit	yes
Test drive	short drive on the company premises	Engine function test	Performed
Manufacturer key number/ type code number	2222 / AKA 00012		
Emission standard	2017/1151;WLTP;reine Elektrofz	Fine dust sticker	
Permitted total weight	2,940 kg	Empty weight	

Tyres

Mounted tyres

#	Tyre size	Type of tyre	Manufacturer	Tread depth
1)	235/55 R19 105H	Winter tyres on Light alloy	Bridgestone	6mm / 6mm
2)	235/55 R19 105H	Winter tyres on Light alloy	Bridgestone	6mm / 6mm

Additional tyres

#	Tyre size	Type of tyre	Manufacturer	Tread depth
1)	235/55 R19 105W	Summer tyres on Light alloy	Continental	5mm / 5mm
2)	235/55 R19 105W	Summer tyres on Light alloy	Continental	5mm / 5mm

Legend: Tread depth information for tires on the left is in the first place, for tires on the right is in the second place on the axle in the direction of travel

Equipment

Standard equipment

- Airbag for driver and front passenger
- Airbag: Sidebag for driver and front passenger (combined thorax/pelvis bag)
- Active Lane Keeping Assist
- Acoustic Surrounding Area Protection (To ensure that your vehicle does not pose a danger to pedestrians and cyclists, even when driving purely electrically and almost silently, the Acoustic Surrounding Area Protection generates a Mercedes-Benz-specific sound outside the vehicle up to a speed of 30 km/h.)
- Outdoor thermometer
- Double cup holder (You'll always have your refreshing or warming drink within easy reach, even while driving. This is made possible by the double cup holder in the front area of the center console. Securely attach two bottles or cups there.)
- ECO Assistant (Consume less energy, increase range – the ECO Assistant supports you in predictive driving. It continuously analyzes whether a vehicle ahead is slowing down, a speed limit, or a downhill gradient is approaching. The ECO Assistant recommends that you take your foot off the accelerator accordingly.)
- Transmission: Direct drive
- Rear window wiper
- Instrument panel in Nappa leather look in metallic silver grey
- Climate: Pre-conditioning
- Communication module (LTE) for the use of Mercedes me connect services (communication module with permanently installed SIM card of the LTE mobile communications standard - two mobile communications antennas)
- Headrests (5)
- Charging cable for wallboxes and public charging stations, 5 m, smooth (This charging cable, also called a Mode 3 cable, allows you to charge your vehicle battery at a wallbox or public charging station with up to 11 kW (Type 2, 3-phase, 16 A).)
- Steering: Direct Steering
- Mercedes-Benz Emergency Call System (The Mercedes-Benz Emergency Call System can provide a decisive time advantage in an emergency. When an accident is detected, a communication module with its own SIM card automatically triggers an emergency call, which can shorten the time until emergency services arrive. The emergency call can also be triggered manually to organize assistance.)
- Navigation accessories: Live Traffic Information pre-installation (With Live Traffic Information, your navigation system receives real-time traffic data and optimizes dynamic route guidance. Accurate and up-to-date information on traffic jams, stop-and-go traffic, and more helps you reduce travel times.)
- Airbag: Kneebag for driver
- Airbag: Windowbag
- Active Brake Assist (Active Brake Assist can help prevent rear-end collisions with vehicles ahead or stationary vehicles, as well as accidents with moving pedestrians and cyclists. In addition to distance and collision warnings, it offers brake boosting—including autonomous emergency braking.)
- 4MATIC all-wheel drive
- Anti-lock braking system (ABS)
- Colored glass
- DYNAMIC SELECT (consisting of 5 driving programs: two energy-efficient driving programs MAX RANGE and ECO, standard setting COMFORT, SPORT and INDIVIDUAL)
- EASY-Pack tailgate with electric operation for opening and closing
- Electronic Stability Program (ESP)
- ESP trailer stabilization
- Driving modes (MAX RANGE, ECO, COMFORT and SPORT)
- Electric windows, front and rear
- Velour floor mats (in equipment color)
- Rear window heated
- Interior headliner in fabric (black)
- Climate: THERMATIC automatic climate control with 2 climate zones (The THERMATIC automatic climate control with 2 climate zones offers individual climate comfort for the front seats: the driver and front passenger can adjust the temperature separately for their side. This is maintained constant thanks to the automatic climate control and the sensitive sensor system, without any manual adjustment.)
- Paint finish: Uni
- Charging system: DC on-board charger (DC charging)
- Charging system: Alternating current charging system (AC charging) up to 11 kW (3-phase)
- Steering wheel: Multifunction sports steering wheel in leather (The elegant leather cover adds even more value to the multifunction sports steering wheel, making it a highlight of the interior. As a driver, you benefit in two ways: What looks good must also feel good. The touch control buttons on the left and right, among other things, operate a variety of functions, including navigation, telephony, and entertainment. Last but not least, you can adjust the cruise control and distance control: Everything under control without taking your hands off the steering wheel.)



- Navigation accessories: Pre-equipped for navigation services (Wherever you go, you are always well informed. Your vehicle will answer questions about your trip and you will find out current gas station prices at your destination, the number of available parking spaces or the current weather. This makes planning your trip even easier.)
- Navigation: Hard drive navigation (Mercedes-Benz look and feel of the navigation system, all map data stored on the hard drive - fast hard drive navigation - destination input via touch function or voice control - route calculation including intermediate destinations - numerous route options and avoidance options - 3D image of the upcoming maneuver and lane recommendation - easy switching of views from 2D to 3D and vice versa - compass - route recording function (requires a USB device to be connected to the multimedia system))
- Radio: MBUX multimedia system (17.78 cm diagonal instrument display, 17.78 cm diagonal media display with touch function, touch control buttons on the steering wheel, radio, USB port in the center console under the armrest, Bluetooth telephony with contact transfer and audio streaming of music files, display of vehicle functions (driver assistance systems, driving programs, and vehicle settings), favorites storage, smartphone-related voice control - activated by long-pressing the voice button on the steering wheel)
- Tire pressure monitoring (Tyre pressure monitoring system (TPMS) with wheel-specific display in the instrument cluster - sensors installed in the wheels - send radio signals with information about pressure and temperature while driving)
- Wheels: 48.3 cm (19") 5-spoke light-alloy wheels (aerodynamically optimized, painted high-gloss black and finished with a high-sheen finish, 235/55 R 19 on 8.0 J x 19 ET 34)
- Rear view camera
- Cruise control
- TIREFIT with tire inflation compressor
- Traffic Sign Assistant (networked system consisting of a camera behind the windshield and navigation maps. Analyzes the camera images and can recognize stored traffic signs. Evaluates the current route based on navigation data. Displays speed limits, prohibitions, and their cancellation in the instrument cluster or media display as well as in the optionally available head-up display. Optional and optional acoustic warning when the speed limit is exceeded. Can recognize no-entry signs.)
- MULTIBEAM LED (24 individually controllable high-performance LEDs per MULTIBEAM LED module for creating a column high beam with 17 controllable individual segments - low beam and high beam with LED projection technology - Adaptive High Beam Assistant Plus (glare-free permanent high beam) - cornering light or cornering light with roundabout and intersection function - Active cornering light with activated high beam - City light, country road light and motorway light - adaptive full-LED rear lights)
- Navigation accessories: Pre-installation for remote and navigation services (Remote & navigation services bundle the basic services for EQ vehicles in one package: -Navigation optimized for Mercedes-Benz EQ - Range on Map (range display) - Charging station display (information on availability) - Programming of charging settings and pre-conditioning including remote query of charging status and range)
- Package: Interior lighting (front footwell lights - LED light in the center console storage compartment - door handle recess lighting - illuminated vanity mirror - corner light in the front/rear doors and in the trunk lid)
- Upholstery: ARTICO imitation leather/fabric
- Radio accessories: Digital radio
- Radio accessories: Touchpad (integrated into the center console, including a palm rest - single and multi-finger gestures, swiping movements, and zoom gestures by spreading and pinching the fingers - recognizes handwritten characters: letters, special characters, and numbers - clear haptic feedback)
- Radio accessories: Pre-installation for digital radio (Pre-installation expands your personal flexibility. This allows you to opt for a digital radio even after the vehicle has been purchased and handed over. It's easy: You activate the software-based on-demand features yourself. This also increases the resale value if a potential buyer insists on a digital radio.)
- Remote and Charging Services Premium (pre-installation for Mercedes me Charge, pre-installation for IONITY: discounted fast charging, Mercedes me Services communication module (remote vehicle status query, auxiliary heating/ventilation programming, remote door locking and unlocking, sunroof/windows with remote closing and opening including ventilation function, personalization, vehicle location, vehicle tracking, geographical vehicle monitoring, parking service monitoring, tracking function, notification when driving at speed))
- High-visibility vest for drivers
- Immobiliser
- Heat and sound-insulating acoustic glass (for the windshield and front side windows)
- Central locking
- Decorative elements: aluminum look

Extra equipment

- Trailer hitch with ESP trailer stabilization
- EASY-Pack load compartment cover (removable)



- Package: Storage (storage and fastening options for the interior and under the loading floor - folding box under the loading floor - 12 V socket on the left in the luggage compartment - map pockets on the backs of the front seats - double USB charging port in the rear (Type C))
- Seat Comfort Package (various electric and manual adjustment options for the front seats to adapt to the specific body and comfort needs of the driver and front passenger - electro-pneumatic 4-way lumbar support and lateral support adjustment with seat control - electric seat cushion tilt adjustment - electric height adjustment - electric backrest adjustment - mechanical seat cushion depth adjustment by 6 cm with leg rest pad - mechanical length adjustment - mechanical headrest adjustment)
- Seats: Heated rear seats
- Seat heating for driver and front passenger
- Partition net for luggage compartment separation and passenger protection (behind the front seats or the 2nd row of seats)
- Package: Parking package with rear view camera (12 sensors: four at the front, four at the rear, two on the sides in the front/rear bumper. Detects parking spaces up to 35 km/h, controls the steering, in conjunction with automatic assists with accelerating, braking, and gear changes. Rear view camera. Visual/acoustic warning of detected obstacles in front of/behind the vehicle up to approx. 10 km/h. Rear Cross Traffic Alert warns of detected cross traffic. Drive Away Assist (only in conjunction with automatic transmission). Button on the center console or on the control panel for the assistance systems.)
- Upholstery: ARTICO man-made leather
- Wheels: Summer complete wheels fitted ex works
- Wheels: Winter complete wheels M+S 4-way 48.3 cm (19") (light alloy wheels in 5-spoke design - aerodynamically optimized, high-gloss black painted and high-shine finish 235/55 R 19 on 8 J x 19 ET 34)

Brief expert findings

Documents submitted	At the time of the inspection, the registration certificate Part 2 (letter) was available, but the registration certificate Part 1 (certificate) was not. (Copy)
VIN comparison	The vehicle identification number (VIN) was read from the vehicle and its conformity with the submitted documents was verified during the inspection by the undersigned.
Inspection	The inspection conditions were sufficient for the assessment of the vehicle. Lifting equipment and a pit were available for examining the vehicle.
Test drive	A short maneuvering and shunting trip was carried out on the company premises.
Engine function test	An engine test run was performed.

Value reducing factors

No.	Component group	Description
1	Misc.	Main inspection - No evidence - No deduction
2	Door - front left side	Door - Scratch(es) - Smart repair
3	Front bumper	Front bumper - Stone chips - Smart repair
4	2nd wheel set	1 tyre - Damaged - Replace
5	Body	Body (Oberflächenkratzer) - Scratched - Conditioning
6	Side panel - rear right side	Sill - Dent / paintcoat damage - Smart repair
7	Door - rear left side	Door - Dent / paintcoat damage - Smart repair
8	Sill - right side	Trim - Scratched - Replace
9	Bonnet	Bonnet - Scratch(es) - Paint
10	Misc.	Inspection / maintenance (Elektro SUV) - Due - Perform
11	2nd wheel set	1 alloy rim - Scratched - Replace
12	Side panel - rear left side	Side panel - Scratched - Paint



Wear and tear

No.	Component group	Description
1	Rear bumper	Spoiler - Scratch(es) - No deduction
2	Vehicle glazing	Windscreen - Stone chips - No deduction

The vehicle shows signs of wear commensurate with its age and use.

Order/Scope of order

The order was placed to prepare a sales report for the vehicle described. This includes the following:

- Description of core relevant information about the vehicle
- Documentation of equipment features
(*Delivery by third-party service providers*)
- Documentation of damage, defects, missing parts
- Documentation of previous damage, unrepaired previous damage, repainting
- a brief visual or functional inspection of the equipment details if possible.
(*Functional tests of driver assistance systems are not included in the scope of services!*)
- a photo documentation of the vehicle

Basis for the order

This product is based on the Alphabet Fuhrpark GmbH guidelines for vehicle returns and valuations. The expert makes the explicit findings in each individual case objectively within the framework of the specified standards based on his or her own expertise.

The vehicle inspection takes place in a disassembled state.

Damage or defects that can only be detected during disassembly/diagnosis work or through advanced knowledge remain within the scope of the prognosis risk. An extended risk exists for concealed defects caused by fraudulent deception and not identifiable by the expert.

Damage or defects resulting from normal use or wear and tear of the vehicle will be accepted according to the applicable standard.

There was no explicit identification or monetary consideration of the expected features within the product.

Features which in their nature and severity slightly exceed normal use but do not constitute unacceptable damage will be documented and identified under signs of use if necessary.

Damage or defects which, according to the underlying standard, can no longer be attributed to normal use or wear and tear are listed in the product under "Depreciating Factors".

Depending on the product specification, a monetary ID can be provided. If this takes place, the costs can be 100% d or pro rata depending on the vehicle's age and mileage.

Previous damages

Apparently, no repaired previous damage could be found on the vehicle.

Comments

Sollte beim aufbereiten der Karosserie die Oberflächenkratzer nicht entfernt werden, können Mehrkosten entstehen.



Figure 1: Diagonal front (left)



Figure 2: Diagonal front (right)



Figure 3: Diagonal rear (left)



Figure 4: Diagonal rear (right)



Figure 5: Interior - front



Figure 6: Interior - rear



Figure 7: Instrument cluster



Figure 8: Instrument panel



Figure 9: interior 360° view



Figure 10: Cargo area

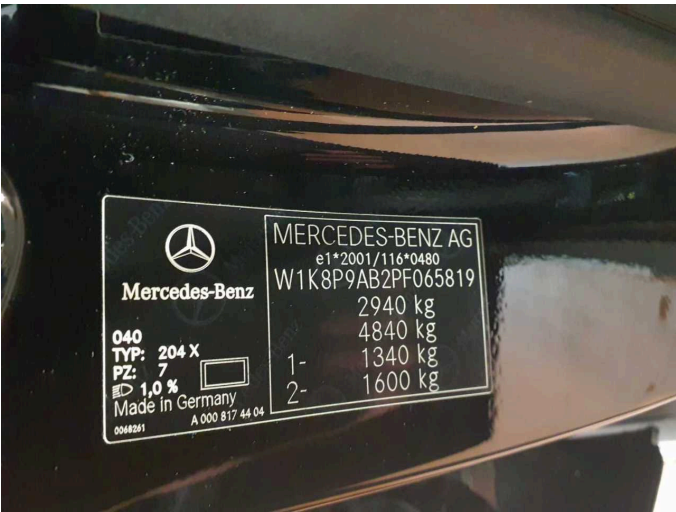


Figure 11: VIN



Figure 12: Mounted tyres



Figure 13: Documents



Figure 14: Documents



Figure 15: Documents



Figure 16: Additional tyres

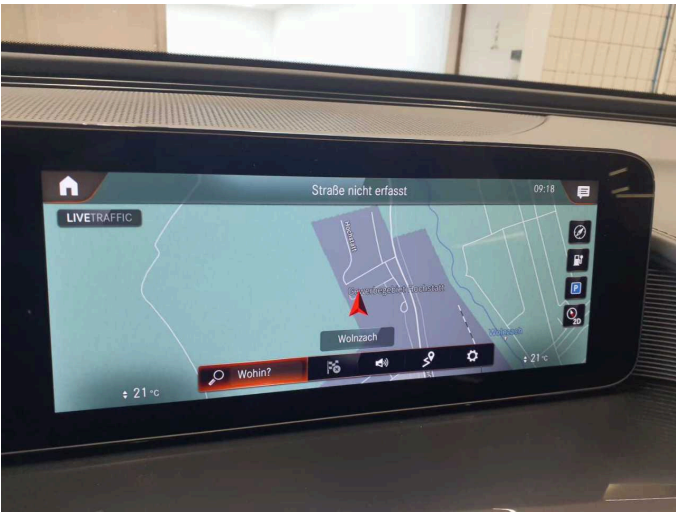


Figure 17: Navigation

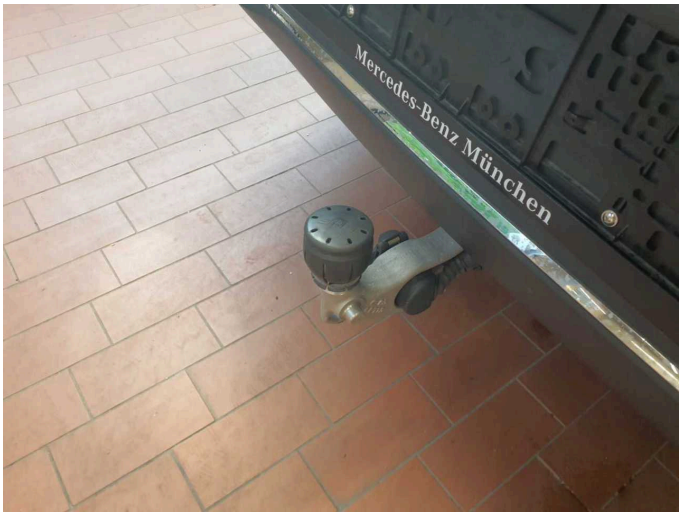


Figure 18: Misc.

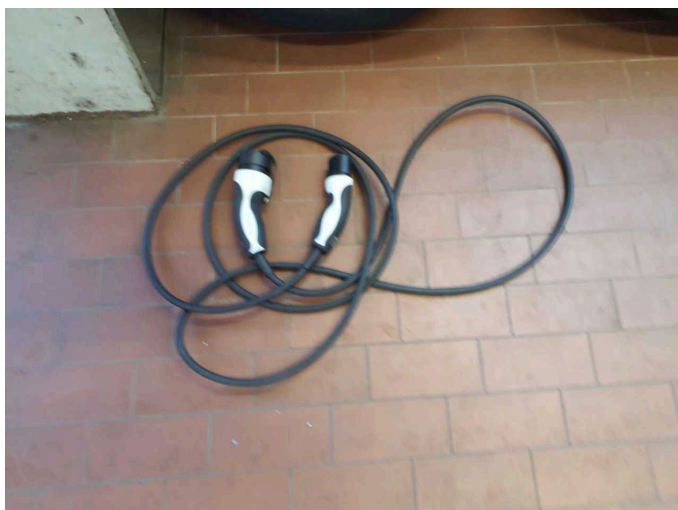


Figure 19: Misc.



Figure 20: Misc.



Figure 21: Misc.



Figure 22: Misc.

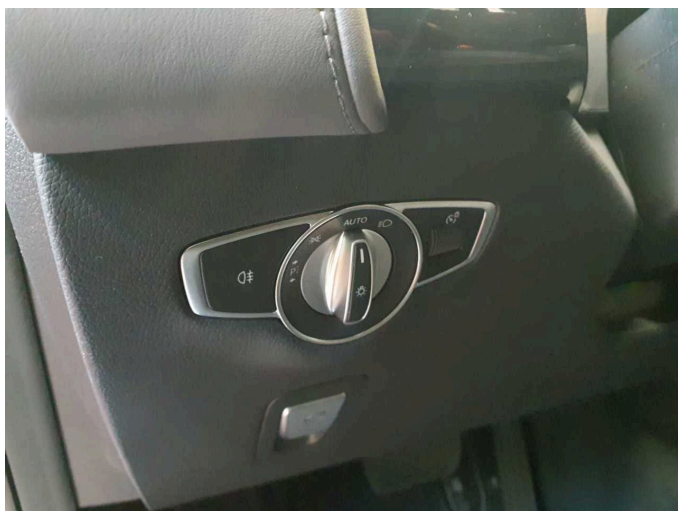


Figure 23: Misc.



Figure 24: Misc.



Figure 25: Misc.

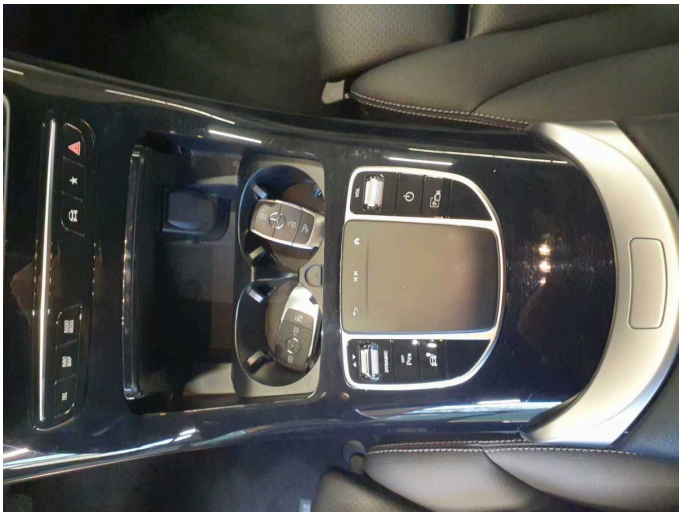


Figure 26: Misc.

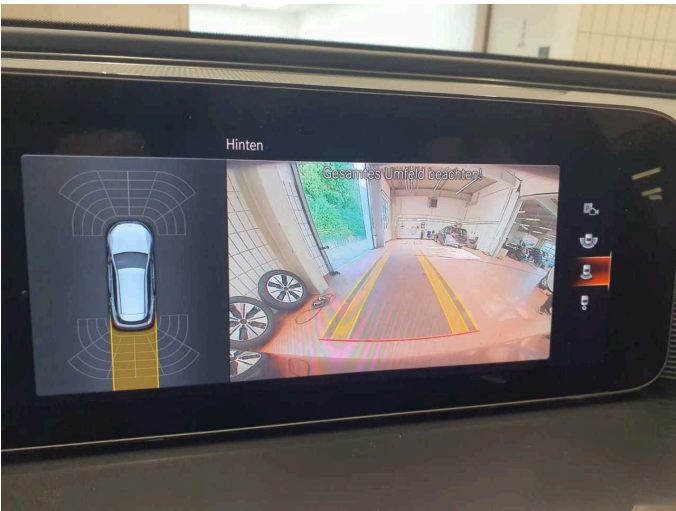


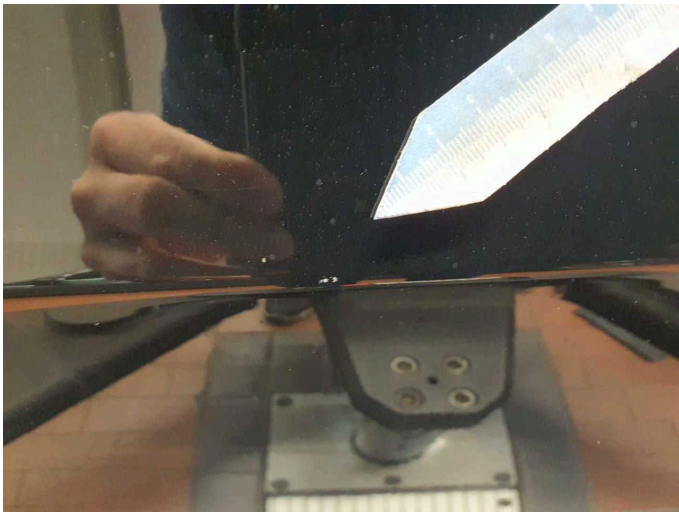
Figure 27: Misc.



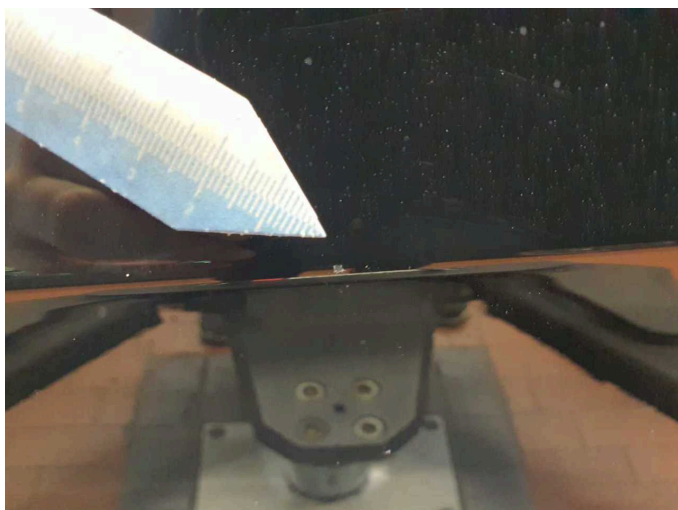
Figure 28: Misc.



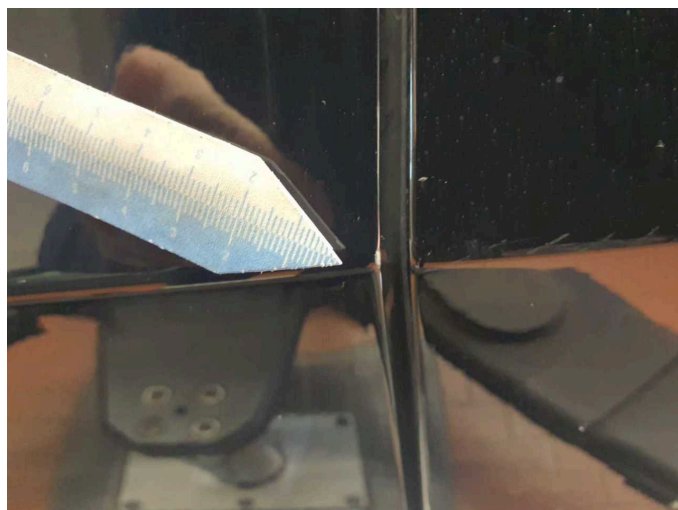
Figure 29: Misc.



Damage 2: Door - front left side: Door - Scratch(es) - Smart repair



Damage 2: Door - front left side: Door - Scratch(es) - Smart repair



Damage 2: Door - front left side: Door - Scratch(es) - Smart repair



Damage 2: Door - front left side: Door - Scratch(es) - Smart repair



Damage 3: Front bumper: Front bumper - Stone chips - Smart repair



Damage 3: Front bumper: Front bumper - Stone chips - Smart repair



Damage 4: 2nd wheel set: 1 tyre - Damaged - Replace



Damage 4: 2nd wheel set: 1 tyre - Damaged - Replace



Damage 4: 2nd wheel set: 1 tyre - Damaged - Replace



Damage 5: Body: Body (Oberflächenkratzer) - Scratched - Conditioning



Damage 5: Body: Body (Oberflächenkratzer) - Scratched - Conditioning



Damage 5: Body: Body (Oberflächenkratzer) - Scratched - Conditioning



Damage 5: Body: Body (Oberflächenkratzer) - Scratched - Conditioning



Damage 5: Body: Body (Oberflächenkratzer) - Scratched - Conditioning



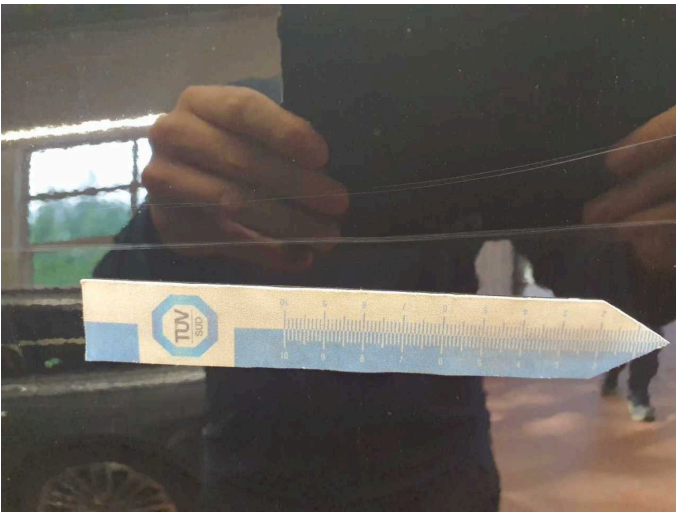
Damage 5: Body: Body (Oberflächenkratzer) - Scratched - Conditioning



Damage 5: Body: Body (Oberflächenkratzer) - Scratched - Conditioning



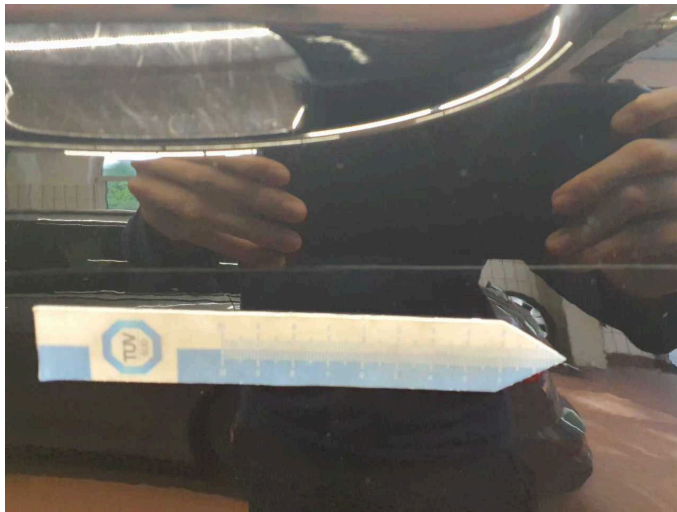
Damage 5: Body: Body (Oberflächenkratzer) - Scratched - Conditioning



Damage 5: Body: Body (Oberflächenkratzer) - Scratched - Conditioning



Damage 5: Body: Body (Oberflächenkratzer) - Scratched - Conditioning



Damage 5: Body: Body (Oberflächenkratzer) - Scratched - Conditioning



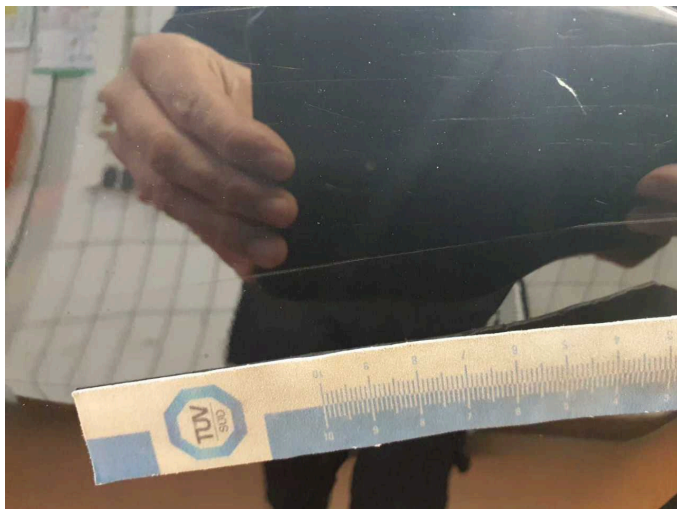
Damage 5: Body: Body (Oberflächenkratzer) - Scratched - Conditioning



Damage 5: Body: Body (Oberflächenkratzer) - Scratched - Conditioning



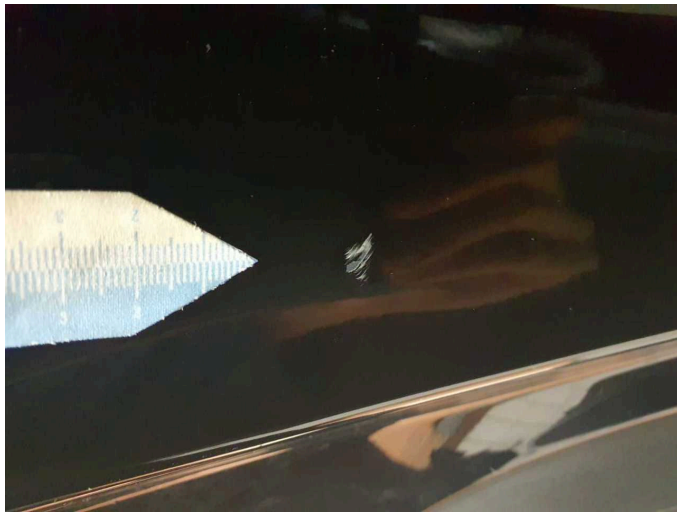
Damage 5: Body: Body (Oberflächenkratzer) - Scratched - Conditioning



Damage 5: Body: Body (Oberflächenkratzer) - Scratched - Conditioning



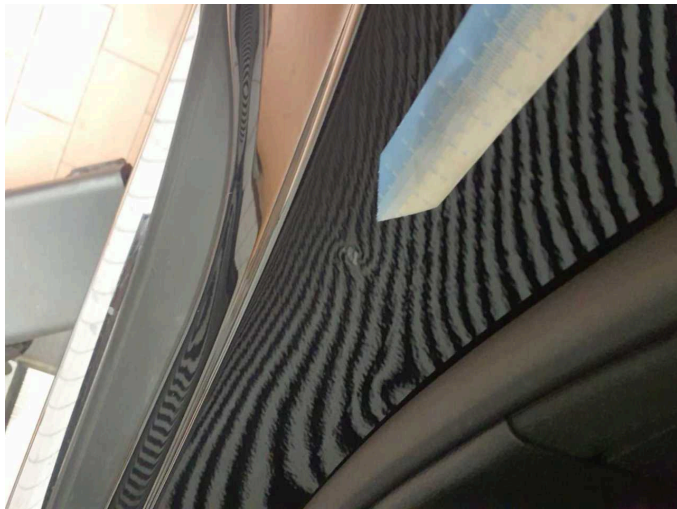
Damage 5: Body: Body (Oberflächenkratzer) - Scratched - Conditioning



Damage 6: Side panel - rear right side: Sill - Dent / paintcoat damage - Smart repair



Damage 6: Side panel - rear right side: Sill - Dent / paintcoat damage - Smart repair



Damage 6: Side panel - rear right side: Sill - Dent / paintcoat damage - Smart repair



Damage 7: Door - rear left side: Door - Dent / paintcoat damage - Smart repair



Damage 7: Door - rear left side: Door - Dent / paintcoat damage - Smart repair



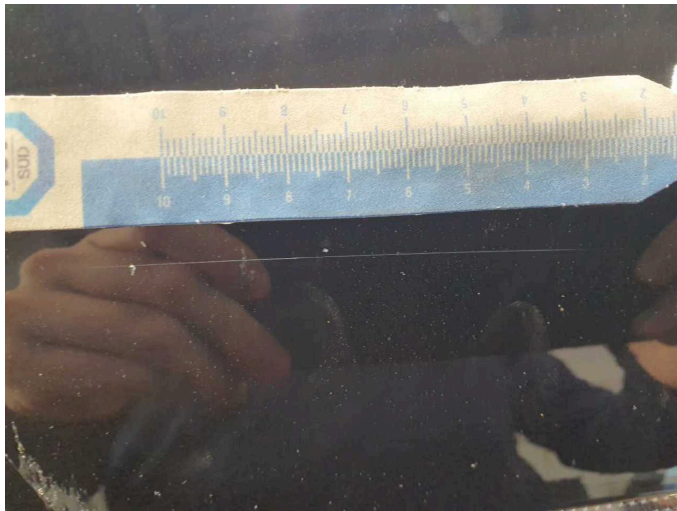
Damage 7: Door - rear left side: Door - Dent / paintcoat damage - Smart repair



Damage 8: Sill - right side: Trim - Scratched - Replace



Damage 8: Sill - right side: Trim - Scratched - Replace



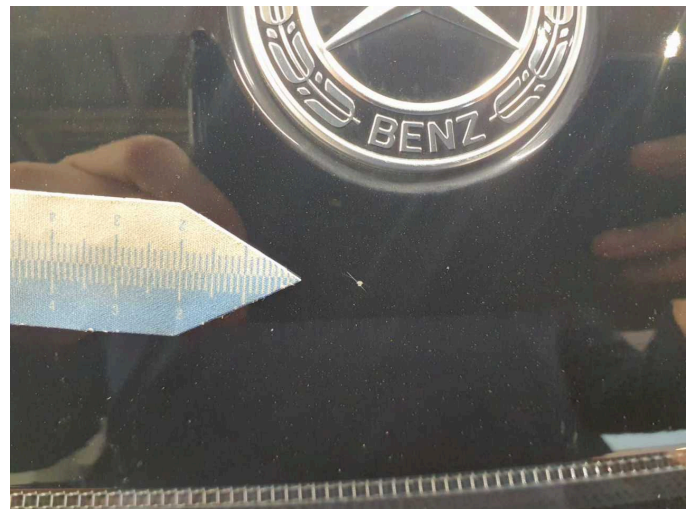
Damage 9: Bonnet: Bonnet - Scratch(es) - Paint



Damage 9: Bonnet: Bonnet - Scratch(es) - Paint



Damage 9: Bonnet: Bonnet - Scratch(es) - Paint



Damage 9: Bonnet: Bonnet - Scratch(es) - Paint



Damage 9: Bonnet: Bonnet - Scratch(es) - Paint



Damage 10: Misc.: Inspection / maintenance (Elektro SUV) - Due - Perform



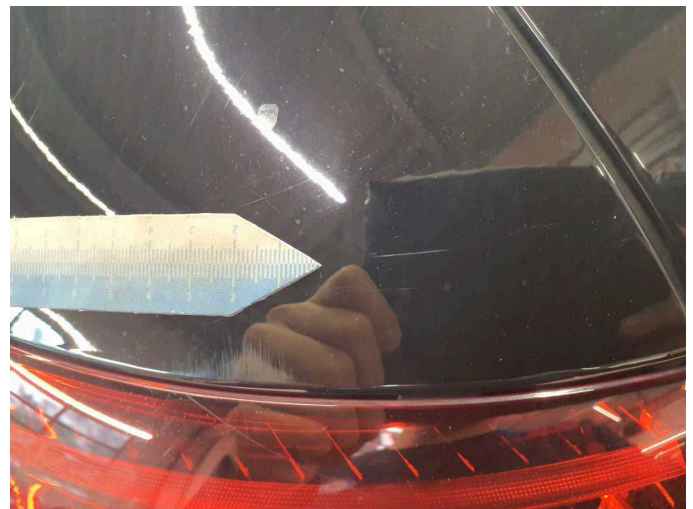
Damage 11: 2nd wheel set: 1 alloy rim - Scratched - Replace



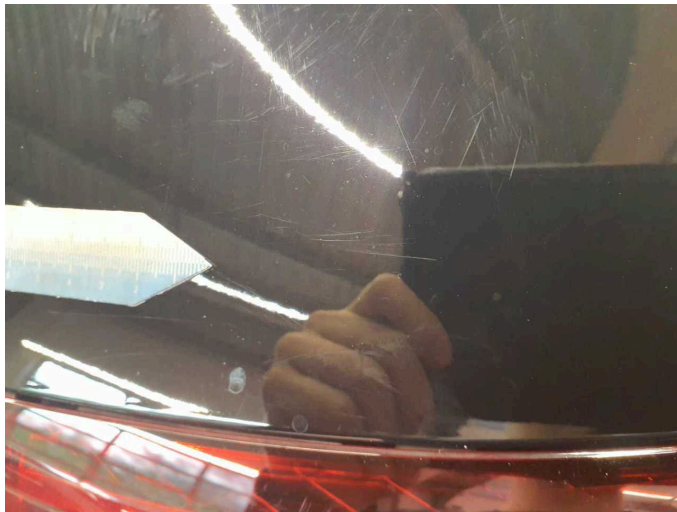
Damage 11: 2nd wheel set: 1 alloy rim - Scratched - Replace



Damage 12: Side panel - rear left side: Side panel - Scratched - Paint



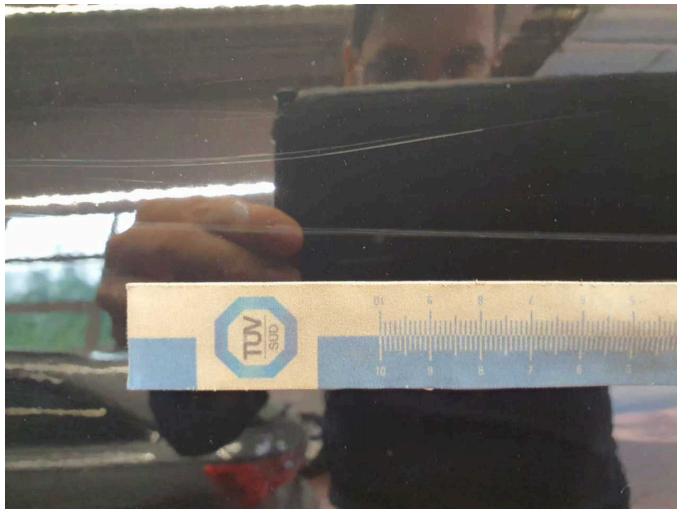
Damage 12: Side panel - rear left side: Side panel - Scratched - Paint



Damage 12: Side panel - rear left side: Side panel - Scratched - Paint



Damage 12: Side panel - rear left side: Side panel - Scratched - Paint



Damage 12: Side panel - rear left side: Side panel - Scratched - Paint



Damage 12: Side panel - rear left side: Side panel - Scratched - Paint



Damage 12: Side panel - rear left side: Side panel - Scratched - Paint



Wartungshistorie

(gemäß Auftraggeber Informationen)

Fahrgestellnummer: W1K8P9AB2PF065819

Hersteller / Modell: MERCEDES-BENZ MB EQC 400 4Matic Electric Art

Datum	KM-Stand	Beschreibung
22.08.2024	29.121	Regelwartungsdienst