



MERCEDES-BENZ CLA

CLA 250 e Shooting Brake 8G-DCT

VIN NO W1K5M8GB4PN340786
Registration Number B4PN340786



MOT Date

2025-09-01

Last Service



Number of Owners

1

Last Service Mileage



Number of Keys

2

First Registration Date

2022-09-09

Odometer Reading

118046 km

Country First Registered

Germany

Inspection Report Summary

Customer	BCA Online	Report Number	P20250929162801
Inspection Date / Place	2025-09-29 / BCA Neuss	Cosmetic Grade	2

Vehicle Summary

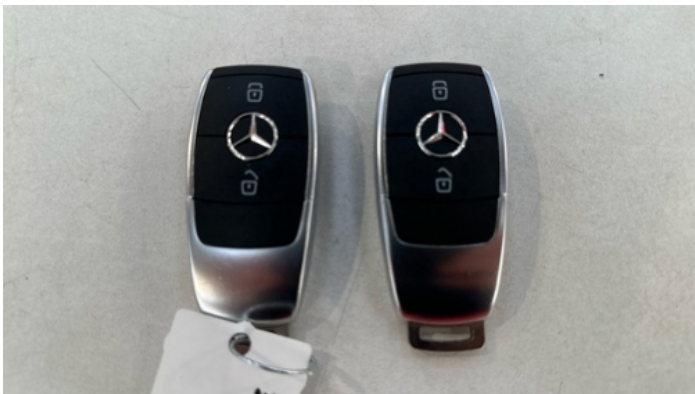
Vehicle Condition	Runner	VAT Type	Qualifying
Fuel Type	Plug - in Hybrid Electric Vehicle Petrol	Road Worthy	Yes
Colour	Black	Engine Size (cc)	1332
Engine Size	1.3	No of Doors	5
Body Type	Stationwagon / Estate	Drive Train	Front
Seat Colour		No of Seats	5
Seat Covering Name	Schwarz	Seat Covering	Cloth/Synthetic Leather
Charging Cables	OUC + Type 2	WLTP CO2 Emissions	
Gearbox Type	Automatic		

Vehicle History & Documents

Service Book Available	Missing	Next Service Mileage	km
Previous Usage		Imported	No
Manufacturer Warrenty			







Equipment

Trafficsignrecognition	Airbag Status	Anti-lock braking	Cruise control
Fatiguelarningsystem	Remote adjusting wing mirrors	Satellite navigation	Laneassist
Rear parking sensors	USB Socket	Alloys wheels	Bluetooth telephone interface
Digitaldashboard	Front parking sensors	Remote central locking	Stability control
Radio			

Equipment Details

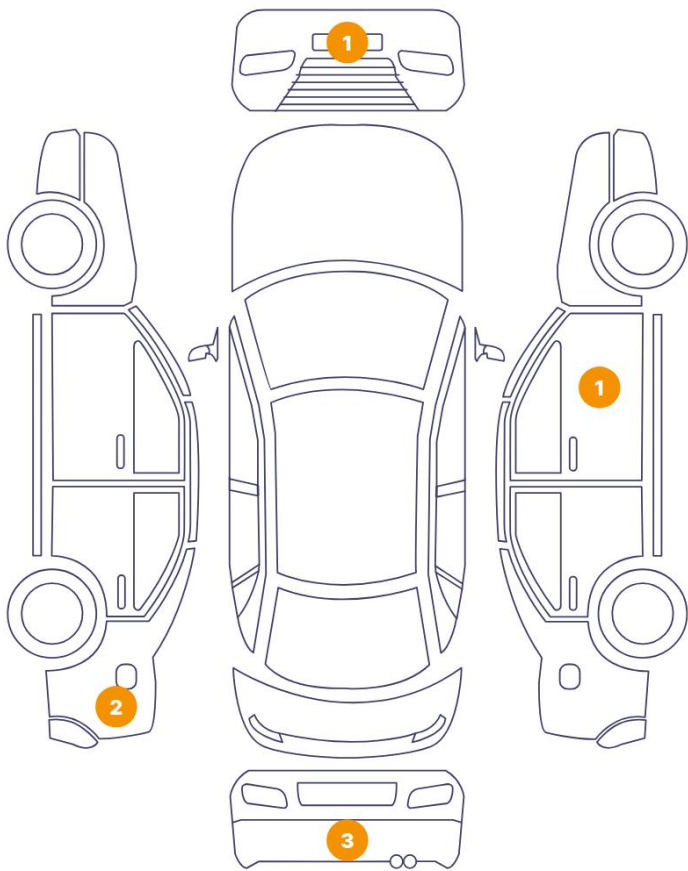
Air Conditioning	Climate Control	Alloy Wheel Size	17
Seat Heating	Front		

Wheels & Tyres

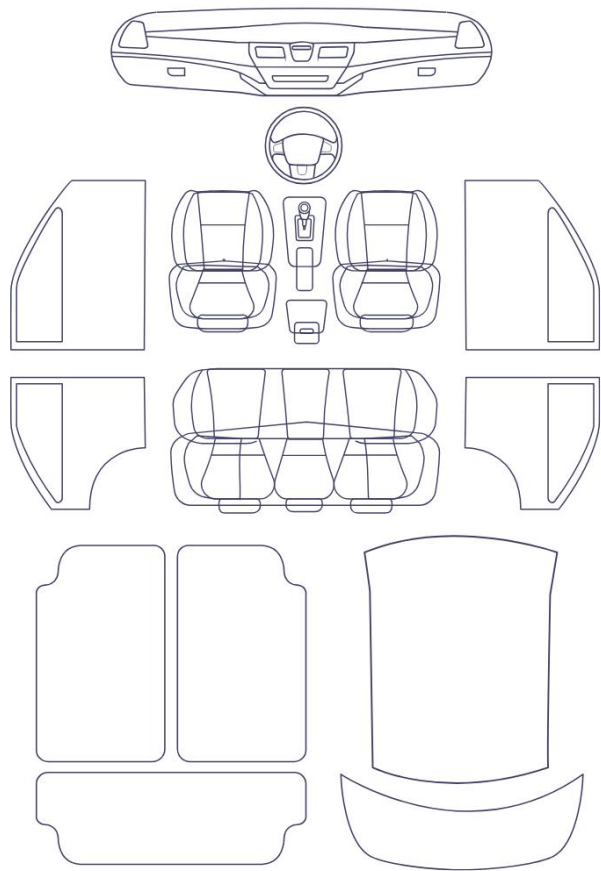
Right Front Tyre Depth	5	Left Front Tyre Depth	5
Right Rear Tyre Depth	5	Left Rear Tyre Depth	5

Cosmetic Damage

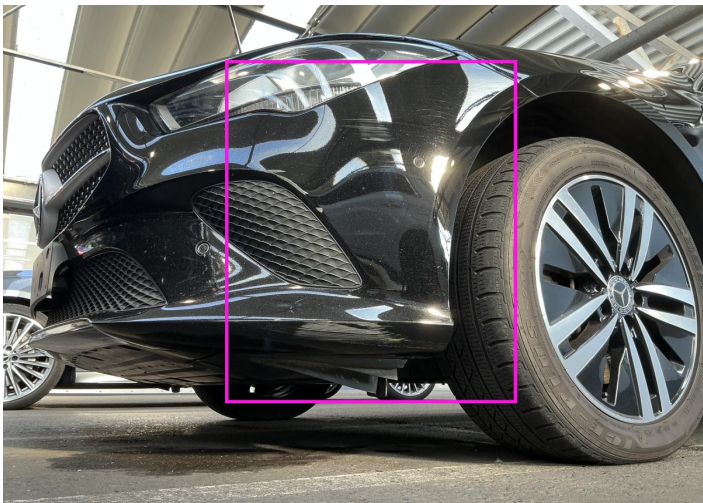
7 Schäden



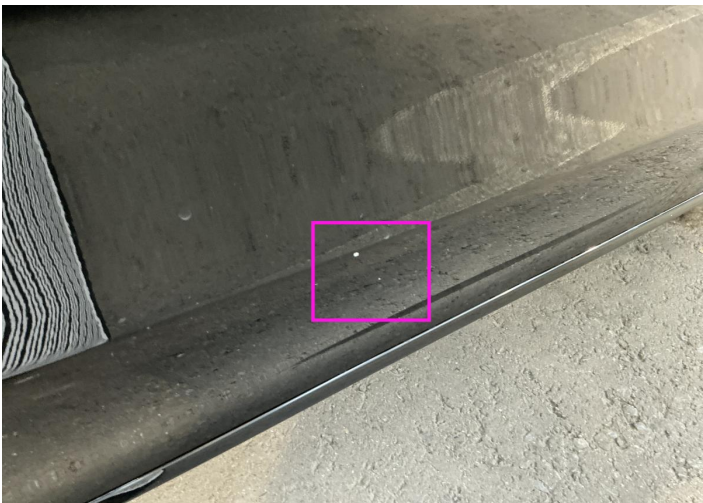
0 Schäden



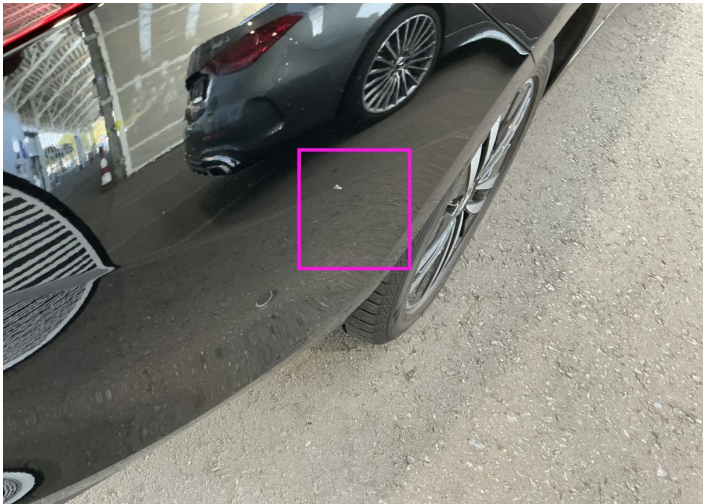
Component		Damage	Comments
1	Bumper / Front	Paint / Scratch / Scuff	
2	Door / Front Right	Paint / Chipping	
3	Bumper / Back	Paint / Scratch / Scuff	
4	Bumper / Back	Paint / Scratch / Scuff	
5	Bumper / Back	Paint / Scratch / Scuff	
6	Fender / Back Left	Paint / Scratch / Scuff	
7	Fender / Back Left	Paint / Scratch / Scuff	



1. Bumper / Front
Paint / Scratch / Scuff -



2. Door / Front Right
Paint / Chipping -



3. Bumper / Back
Paint / Scratch / Scuff -



4. Bumper / Back
Paint / Scratch / Scuff -



5. Bumper / Back
Paint / Scratch / Scuff -



6. Fender / Back Left
Paint / Scratch / Scuff -



7. Fender / Back Left
Paint / Scratch / Scuff -

Mechanical Condition

Control Lights

ABS Warning Light	✓	ESP Fault/Traction Control Malfunction Light	✓
Airbag Warning Light	✓	Oil Pressure Warning Light	✓
Brake Warning Light	✓	Power Steering Warning Light	✓
Alternator / Battery	✓	No Dashboard Lights	✓
Display Defect	✓	Service Light	⚠
Tire Pressure Monitoring System	✓		

Engine

Engine Status / EML	✓	Engine Leak Visible	✓
Engine Starts	✓		

Gearbox

Gear Box	✓
----------	---

Equipments Test

Electric Windows	✓	Navigation System	✓
AC / Heating System	✓	Main & Spare Keys Functioning	✓
Parking Sensors / Cameras Functioning	✓		

Levels

Brakes Fluid	✓	Coolant Fluid	✓
--------------	---	---------------	---

Hybrid/EV

Charge Lead Condition	✓	Charge Port Condition	✓
Hybrid System Fault	✓		

Test Drive Inspection

Steering Wheel			
Steering Noise / Anomaly		✔	
Engine			
Engine Noise	✔	The Gears Scratch / Skip / Abnormal Operation	✔
Fume Quantity	✔	Power Loss	✔
Brake			
Brake System Anomaly		✔	
General			
Test Driven Status		✔	
✔ <i>No troubles detected, good condition or correct tests, according to vehicle age and mileage</i>			
❗ <i>Damages or malfunction detected that requires repairs by the buyer</i>			
NA <i>Not applicable</i>			
☐ <i>Not tested</i>			

Disclaimer

Please also note the "UserGuide condition report", which shows the scope of the vehicle description.

[User Guide](#)