



MERCEDES-BENZ CLA

CLA 250 e Shooting Brake 8G-DCT

VIN NO W1K5M8GB1PN366472
Registration Number B1PN366472



MOT Date

2025-12-01

Last Service



Number of Owners

1

Last Service Mileage



Number of Keys

2

First Registration Date

2022-12-13

Odometer Reading

85322 km

Country First Registered

Germany

Inspection Report Summary

Customer	BCA Online	Report Number	P20250911101335
Inspection Date / Place	2025-09-11 / BCA Neuss	Cosmetic Grade	4

Vehicle Summary

Vehicle Condition	Runner	VAT Type	Qualifying
Fuel Type	Plug - in Hybrid Electric Vehicle Petrol	Gearbox Type	Automatic
Colour	Black	Engine Size (cc)	1332
Engine Size	1.3	No of Doors	5
Body Type	Stationwagon / Estate	Drive Train	Front
Seat Colour		No of Seats	5
Seat Covering Name	Schwarz	Seat Covering	Cloth/Synthetic Leather
Charging Cables	Type 2	WLTP CO2 Emissions	

Vehicle History & Documents

Service Book Available	Missing	Next Service Mileage	km
Previous Usage		Imported	No
Manufacturer Warranty			









Equipment

Tow ball	Airbag Status	Anti-lock braking	Cruise control
Remote adjusting wing mirrors	Reversing Camera	Stability control	Electrically folding wing mirrors
Leather steering wheel	Rear parking sensors	USB Socket	Alloys wheels
Bluetooth telephone interface	Front parking sensors	Remote central locking	Satellite navigation
Sunroof	Electric tailgate	Radio	

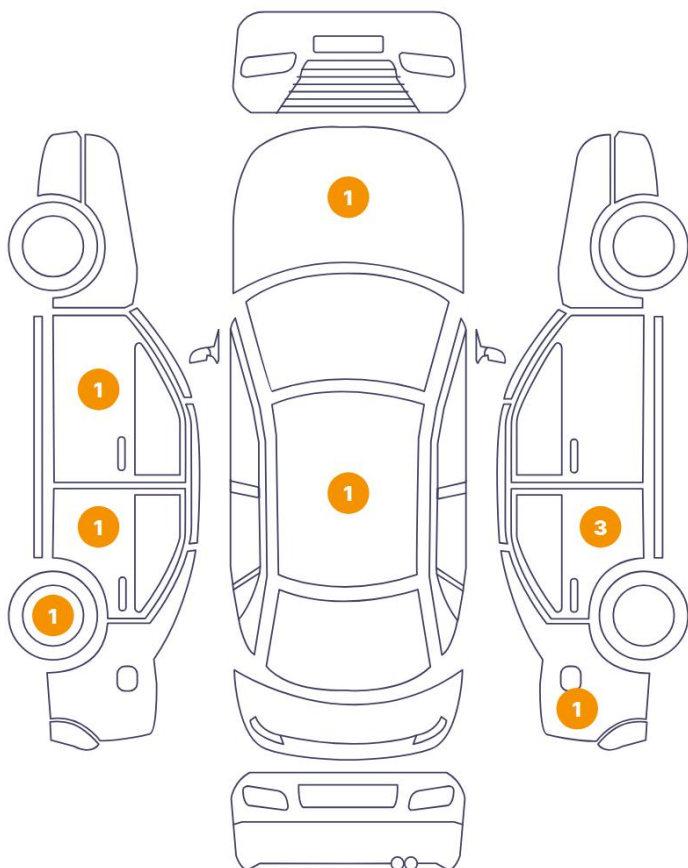
Equipment Details

Tow Ball Type	Pivoted	Air Conditioning	Climate Control
Alloy Wheel Size	17	Extra Wheel / Tyre Set	Winter Tyres
Seat Heating	Front	Sunroof Type	Opening Panoramic

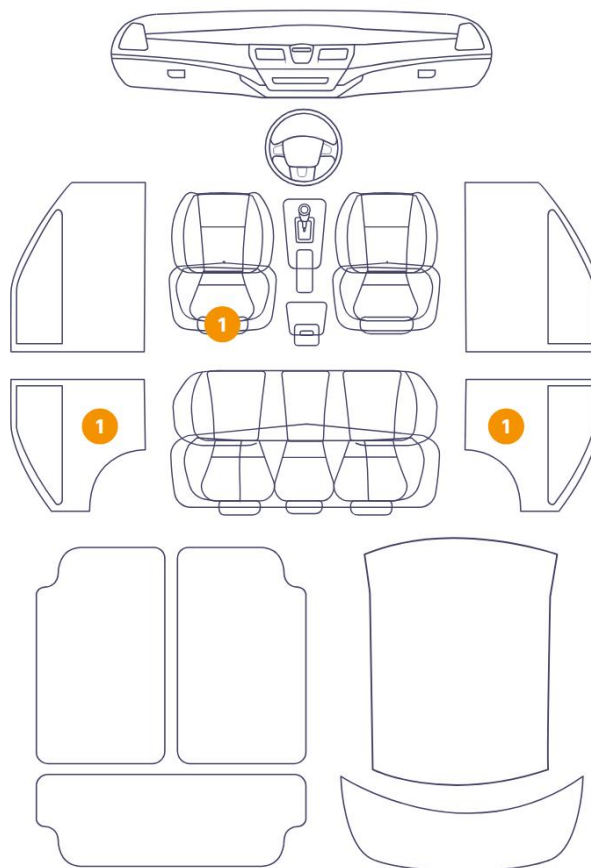
Wheels & Tyres

Right Front Tyre Depth	5	Left Front Tyre Depth	5
Right Rear Tyre Depth	5	Left Rear Tyre Depth	5
Extra Wheel - 1 Tyre Depth	4	Extra Wheel - 2 Tyre Depth	4
Extra Wheel - 3 Tyre Depth	5	Extra Wheel - 4 Tyre Depth	5

9 Schäden



3 Schäden



7/11 - Report Number P20250911101335



1. Seat / Front Left
Interior / Scratched -



2. Pillar / Back Left
Paint / Scratch / Scuff -



3. Panel Filling / Back Left
Interior / Scratched -



4. Pillar / Back Right
Paint / Scratch / Scuff -



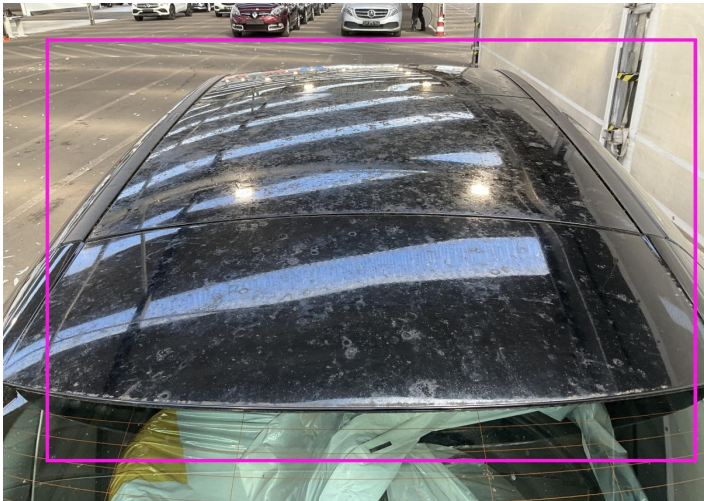
5. Panel Filling / Back Right
Interior / Scratched -



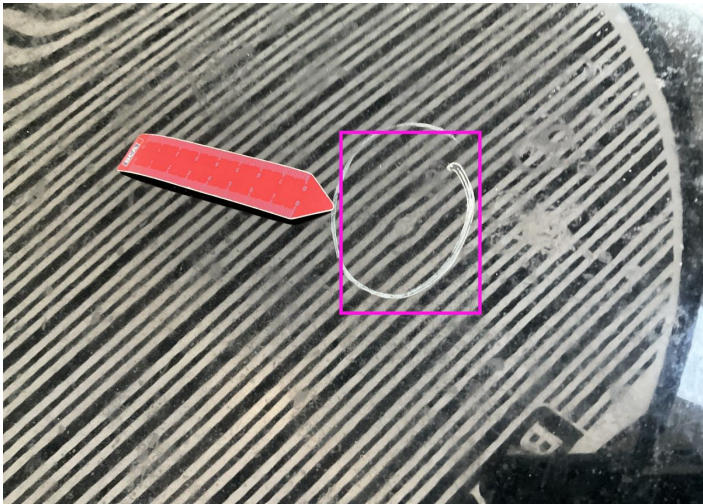
6. Fender / Back Right
Paint / Poor Previous Repair -



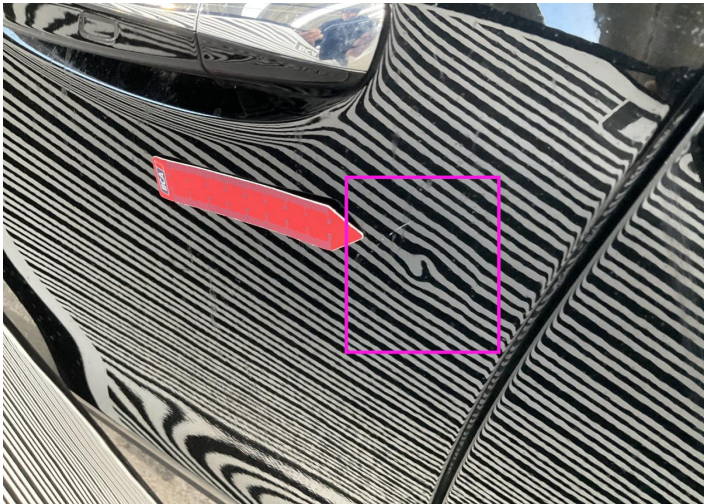
7. Door / Back Right
Paint / Poor Previous Repair -



8. Roof
Paint / Chemical Damage -



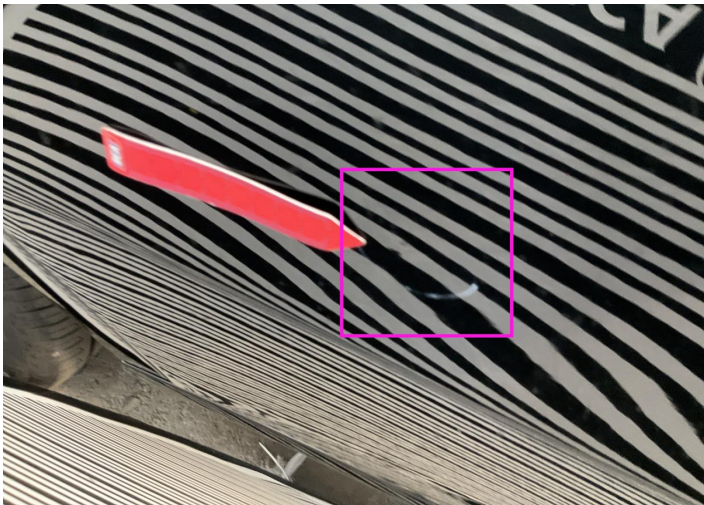
9. Hood
Bodywork / Dent / Dent -



10. Door / Front Left
Bodywork / Dent / Dent -



11. Rim / Back Left
Out of Bodywork / Scratch -



12. Door / Back Right
Bodywork / Dent / Dent -

Mechanical Condition

Control Lights

Display Defect	✓	ABS Warning Light	✓
ESP Fault/Traction Control Malfunction Light	✓	Airbag Warning Light	✓
Oil Pressure Warning Light	✓	Brake Warning Light	✓
Power Steering Warning Light	✓	Alternator / Battery	✓
No Dashboard Lights	✓	Tire Pressure Monitoring System	✓

Equipments Test

Main & Spare Keys Functioning	✓	Electric Windows	✓
Navigation System	✓	Audio Equipment	✓
Parking Sensors / Cameras Functioning	✓	AC / Heating System	✓

Engine

Engine Status / EML	✓	Engine Leak Visible	✓
Engine Starts	✓		

Gearbox

Gear Box	✓
----------	---

Hybrid/EV

Charge Lead Condition	✓	Charge Port Condition	✓
Hybrid System Fault	✓		

Levels

Brakes Fluid	✓	Coolant Fluid	✓
--------------	---	---------------	---

Test Drive Inspection

Steering Wheel			
Steering Noise / Anomaly		✓	
Engine			
Engine Noise	✓	The Gears Scratch / Skip / Abnormal Operation	✓
Fume Quantity	✓	Power Loss	✓
Brake			
Brake System Anomaly		✓	
General			
Test Driven Status		✓	
✓ <i>No troubles detected, good condition or correct tests, according to vehicle age and mileage</i>			
! <i>Damages or malfunction detected that requires repairs by the buyer</i>			
NA <i>Not applicable</i>			
= <i>Not tested</i>			

Disclaimer

Please also note the "UserGuide condition report", which shows the scope of the vehicle description.

[User Guide](#)