



Expertise

Protocol number: 39817020  
Order No. / Reference: 24720054  
Inspection date: 20 May 2025

Manufacturer: Mercedes-Benz	Model: CLA 220 d 8G-DCT AMG Line
VIN: W1K5J1EB4PN325529	



ALPHABET



ALPHABET

Vehicle details	
Manufacturer / Type / Model / Equipment	
Mercedes-Benz CLA 220 d 8G-DCT AMG Line	
Vehicle Identification number	W1K5J1EB4PN325529
Mileage (Read)	152,483 km
First registration	13 Jul 2022
Number of holders	1
Next periodical technical inspection	07/2025
(Report not on hand)	
Power / Engine displacement	140 kw / 1,950 ccm
Fuel type / Cylinder	Diesel / 4
Gearbox / Number of gears	Automatic / 8
Type of drive	Front drive
Type of vehicle	Saloon car
Colour / colour code	Mountaingrau Metallic
Doors / Seats	4 / 5
Upholstery type	Alcantara / Leather
Colour of upholstery	Black
Re/Import	no
Driving readiness	Roadworthy



## Vehicle details

<b>Maintenance booklet / proof</b>	digital proof / complete	<b>Next maintenance in</b>	196 Tag(e)
<b>Last maintenance on / at</b>	11/2024 at 129,560 km		
<b>Key is / should be</b>	2 / 2	<b>FZG documents</b>	ZB#2 (B) was available (copy), ZB#1 (S) was not available
		<b>Letter No.</b>	GJ498699
<b>Previous damage / Accident</b>	Detectable	<b>Repainting</b>	None detectable
<b>Inspection conditions</b>	Sufficient	<b>Lifting equipment / pit</b>	yes
<b>Test drive</b>	Not performed	<b>Engine function test</b>	Performed
<b>Driving readiness</b>	Roadworthy		
<b>Manufacturer key number/ type code number</b>	2222 / AGQ 00027		
<b>Emission standard</b>	EURO6;WLTP;AP;PI/CI; M, N1 I	<b>Fine dust sticker</b>	
<b>Permitted total weight</b>	2,065 kg	<b>Empty weight</b>	

## Tyres

### Mounted tyres

#	Tyre size	Type of tyre	Manufacturer	Tread depth
1)	205/55 R17 95V	Winter tyres on Light alloy	Goodyear	5mm / 5mm
2)	205/55 R17 95V	Winter tyres on Light alloy	Goodyear	7mm / 7mm

### Additional tyres

#	Tyre size	Type of tyre	Manufacturer	Tread depth
1)	225/45 R18 91W	Summer tyres on Light alloy	Bridgestone	5mm / 5mm
2)	225/45 R18 91W	Summer tyres on Light alloy	Pirelli	5mm / 5mm

**Legend: Tread depth information for tires on the left is in the first place, for tires on the right is in the second place on the axle in the direction of travel**

## Equipment

### Standard equipment

- ADAPTIVE BRAKE with HOLD function, hill start assist, pre-filling and dry braking in wet conditions
- Airbag: Kneebag for driver
- Airbag: Windowbag for driver and front passenger
- AMG sports pedal system made of brushed stainless steel with rubber studs
- Traction control (ASR)
- ATTENTION ASSIST
- Basic services
- Brake assist, active
- Double cup holders at the front
- Third brake light in LED technology
- ECO start-stop function
- Chassis: Comfort chassis with lowering including direct steering
- Speed Limit Assistant
- lockable glove compartment
- KEYLESS-GO start function
- Rear headrests (3)
- fuel tank with 51 liters capacity
- Steering wheel: Multifunction sports steering wheel in nappa leather
- Mercedes-Benz emergency call system
- Package: Light and Vision Package
- Upholstery: ARTICO man-made leather/DINAMICA microfiber
- Radio accessories: Digital radio (DAB)
- Radio accessories: USB interface in spontaneous storage & 2 USB interfaces in rear center console
- Wheels: 45.7 cm (18") AMG light alloy wheels 4-way in 5-twin-spoke design
- Windscreen wipers with rain sensor
- Seats: iSize child seat anchors with Top Tether on the outer seats
- Seats: Sports seats front
- socket (12 V)
- Cruise control
- High-visibility vest for drivers
- Central locking
- Airbag for driver and front passenger
- Airbag: Automatic passenger airbag deactivation
- Airbag: Sidebag for driver and front passenger
- AMG floor mats
- AMG styling
- Anti-lock braking system (ABS)
- Armrest for driver and passenger foldable
- Exterior mirrors left and right, heated and electrically adjustable, painted in body color
- diesel particulate filter
- tachometer
- DYNAMIC SELECT
- Electronic Stability Program (ESP)
- 4-way electric window lifter
- Electric parking brake
- Transmission: Automatic 8G-DCT
- Interior headliner fabric black
- THERMATIC automatic climate control
- Front headrests, integrated
- steering wheel shift paddles
- Steering: Direct Steering
- Light and rain sensor
- Net in the passenger footwell
- Package: Seat comfort
- Radio: Advanced functions MBUX
- Radio: MBUX multimedia system
- Radio accessories: Communication module (LTE) for the use of Mercedes me connect services
- Tire pressure monitoring (TPMS)
- Gear lever in perforated nappa leather and additional chrome elements
- CLA-Class seat belts
- Seats: Seat backrests in the rear can be folded down 40:20:40
- Lane Keeping Assist, active
- Bumpers in body color
- Touchpad
- Electronic immobilizer
- DINAMICA decorative elements

### Extra equipment

- Storage compartment in center console with roller blind
- Paint finish: metallic (according to sample card)
- Navigation accessories: Preparation for Live Traffic Information
- Package: Cargo space (consisting of: - 12V socket - Power supply on the left and right sides - Reversible mat)
- Ambient lighting with 64 different colors
- LED High Performance headlights (The LED High Performance headlights offer greater safety at night and a distinctive, striking look. Thanks to LED technology, they illuminate the road better than conventional headlights - with lower energy consumption.)



- Package: MBUX High-End Package (hard drive navigation - preparation for live traffic information - traffic sign assistant - navigation connectivity package: hard drive navigation, extended navigation services - smartphone integration: mobile phone via Apple CarPlay and Android Auto with the media system - preparation for digital key handover - wireless charging system for mobile devices or multifunction telephony - media display - fully digital instrument display - MBUX augmented reality for navigation)
- Package: Mirror package (interior and exterior mirrors on the driver's side automatically dimming - exterior mirrors left and right electrically folding)
- Radio accessories: Advanced sound system (with 10 speakers and 225 watts system power)
- Seats: 4-way lumbar support for driver and front passenger
- Seat heating for driver and front passenger
- Elimination of type marking on the trunk lid
- Heat-insulating dark tinted glass

### Brief expert findings

Documents submitted	At the time of the inspection, the registration certificate part 2 (letter) was available, but the registration certificate part 1 (certificate) was not available. (Copy)
VIN comparison	The vehicle identification number (VIN) was read and the undersigned verified that it matched the documents submitted during the inspection.
Inspection	The inspection conditions were sufficient for the assessment of the vehicle. Lifting equipment and a pit were available for examining the vehicle.
Test drive	No test drive/maneuvering was carried out during the inspection of the vehicle.
Engine function test	An engine test run was performed.
Driving readiness	The vehicle was drivable at the time of inspection.

### Value reducing factors

No.	Component group	Description
1	Door - front left side	Door edge - Scratch(es) - Smart repair
2	Front bumper	Front bumper - Scratched - Smart repair
3	2nd wheel set	1 alloy rim - Scratched - Replace
4	Vehicle glazing	Windscreen - Broken / torn - Replace

### Wear and tear

No.	Component group	Description
1	Headlight	Headlight - right side - Stone chips - No deduction
2	Headlight	Headlight - left side - Stone chips - No deduction

The vehicle shows signs of wear commensurate with its age and use.

### Previous damages

No.	Previous damage	Extent of damage (Net)
1	Rear, Provided by user / customer, from 29 Jan 2025	2.300,44 €
2	Rear, Provided by user / customer, from 2 Sept 2024	2.995,38 €



## Order/Scope of order

The order was placed to prepare a sales report for the vehicle described. This includes the following:

- Description of core relevant information about the vehicle
- Documentation of equipment features  
(*Delivery by third-party service providers*)
- Documentation of damage, defects, missing parts
- Documentation of previous damage, unrepaired previous damage, repainting
- a brief visual or functional inspection of the equipment details if possible.  
(*Functional tests of driver assistance systems are not included in the scope of services!*)
- a photo documentation of the vehicle

## Basis for the order

This product is based on the Alphabet Fuhrpark GmbH guidelines for vehicle returns and valuations. The expert makes the explicit findings in each individual case objectively within the framework of the specified standards based on his or her own expertise.

The vehicle inspection takes place in a disassembled state.

Damage or defects that can only be detected during disassembly/diagnosis work or through advanced knowledge remain within the scope of the prognosis risk. An extended risk exists for concealed defects caused by fraudulent deception and not identifiable by the expert.

Damage or defects resulting from normal use or wear and tear of the vehicle will be accepted according to the applicable standard.

There was no explicit identification or monetary consideration of the expected features within the product.

Features which in their nature and severity slightly exceed normal use but do not constitute unacceptable damage will be documented and identified under signs of use if necessary.

Damage or defects which, according to the underlying standard, can no longer be attributed to normal use or wear and tear are listed in the product under "Depreciating Factors".

Depending on the product specification, a monetary ID can be provided. If this takes place, the costs can be 100% d or pro rata depending on the vehicle's age and mileage.

## Previous damages

According to available information previous damages were repaired at the vehicle. Traces of repairs, which allow conclusions about the area of repair, were not recognizable during the inspection.

## Comments

- Für den montierten Radsatz wurde kein Nachweiß erbracht.
- Winterradsatz ist kein Bestandteil des Auslieferungsumfangs.





**Figure 1:** Diagonal front (left)



**Figure 2:** Diagonal front (right)



**Figure 3:** Diagonal rear (left)



**Figure 4:** Diagonal rear (right)



**Figure 5:** Interior - front



**Figure 6:** Interior - rear





Figure 7: Instrument cluster



Figure 8: Instrument panel



Figure 9: interior 360° view



Figure 10: Cargo area

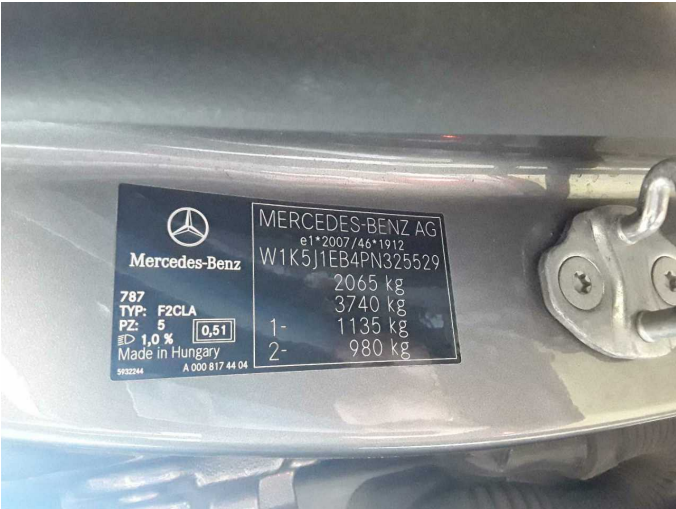


Figure 11: VIN



Figure 12: Mounted tyres





Figure 13: Documents



Figure 14: Documents

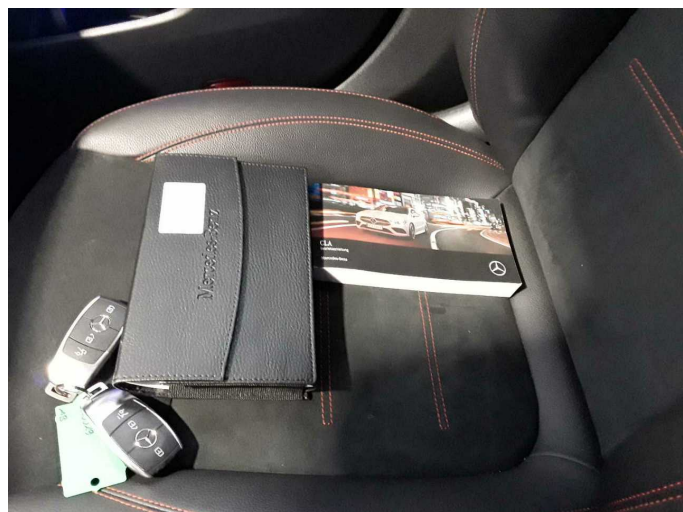


Figure 15: Documents



Figure 16: Additional tyres

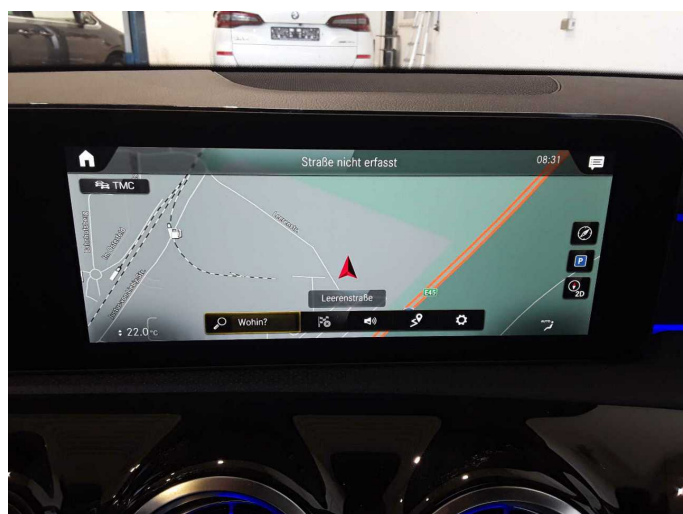


Figure 17: Navigation



Figure 18: Misc.





Figure 19: Misc.



Figure 20: Misc.



Figure 21: Misc.



Damage 1: Door - front left side: Door edge - Scratch(es) - Smart repair



Damage 1: Door - front left side: Door edge - Scratch(es) - Smart repair



Damage 2: Front bumper: Front bumper - Scratched - Smart repair





**Damage 2:** Front bumper: Front bumper - Scratched - Smart repair



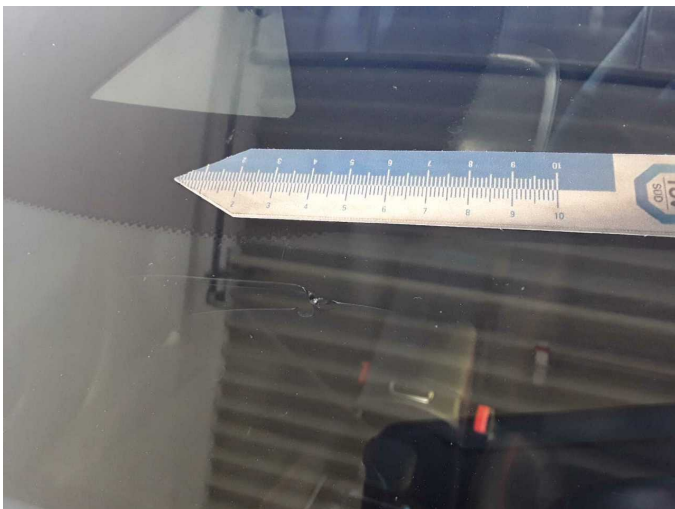
**Damage 3:** 2nd wheel set: 1 alloy rim - Scratched - Replace



**Damage 3:** 2nd wheel set: 1 alloy rim - Scratched - Replace



**Damage 4:** Vehicle glazing: Windscreen - Broken / torn - Replace



**Damage 4:** Vehicle glazing: Windscreen - Broken / torn - Replace