



Expertise

Protocol number: 41646643  
Order No. / Reference: 25199952  
Inspection date: 22 Sept 2025

Manufacturer: Mercedes-Benz	Model: CLA 180 d 8G-DCT Progressive
VIN: W1K5J1AB0PN326358	



Vehicle details	
Manufacturer / Type / Model / Equipment	
Mercedes-Benz CLA 180 d 8G-DCT Progressive	
Vehicle Identification number	W1K5J1AB0PN326358
Mileage (Read)	143,791 km
First registration	19 Jul 2022
Number of holders	1
Power / Engine displacement	85 kw / 1,950 ccm
Fuel type / Cylinder	Diesel / 4
Gearbox / Number of gears	Automatic / 8
Type of drive	Front drive
Type of vehicle	Coupe
Colour / colour code	NACHTSCHWARZ UNILACK
Doors / Seats	4 / 5
Upholstery type	Artificial leather
Colour of upholstery	Black



## Vehicle details

<b>Maintenance booklet / proof</b>	digital proof / complete	<b>Next maintenance in</b>	247 Tag(e)
<b>Last maintenance on / at</b>	05/2025 at 130,357 km		
<b>Key is / should be</b>	2 / 2	<b>FZG documents</b>	ZB#2 (B) was available (copy), ZB#1 (S) was not available
		<b>Letter No.</b>	GJ499320
<b>Previous damage / Accident</b>	None detectable	<b>Repainting</b>	Detectable
<b>Inspection conditions</b>	sufficient	<b>Lifting equipment / pit</b>	yes
<b>Test drive</b>	Not performed	<b>Engine function test</b>	Performed
<b>Manufacturer key number/ type code number</b>	2222 / AXD 00033		
<b>Emission standard</b>	EURO6;WLTP;AP;PI/CI; M, N1 I	<b>Fine dust sticker</b>	
<b>Permitted total weight</b>	2,055 kg	<b>Empty weight</b>	

## Tyres

### Mounted tyres

#	Tyre size	Type of tyre	Manufacturer	Tread depth
1)	225/45 R18 95W	Summer tyres on Light alloy	Continental	6mm / 6mm
2)	225/45 R18 91W	Summer tyres on Light alloy	Bridgestone	6mm / 6mm

### Additional tyres

#	Tyre size	Type of tyre	Manufacturer	Tread depth
1)	225/45 R18 91H	Winter tyres on Light alloy	Pirelli	5mm / 5mm
2)	225/45 R18 91H	Winter tyres on Light alloy	Pirelli	6mm / 6mm

### Replacement

Typ	Tyre size	Type of tyre	Manufacturer	Tread depth
	Tirefit	Expiration date 08/2027		

**Legend:** Tread depth information for tires on the left is in the first place, for tires on the right is in the second place on the axle in the direction of travel

## Equipment

### Standard equipment

- |   |   |
|---|---|
| <ul style="list-style-type: none"> <li>• ADAPTIVE BRAKE with HOLD function, hill start assist, pre-filling and dry braking in wet conditions</li> <li>• Airbag: Kneebag for driver</li> <li>• Airbag: Windowbag for driver and front passenger</li> <li>• Traction control (ASR)</li> <li>• ATTENTION ASSIST</li> <li>• Basic services</li> <li>• Brake assist, active</li> <li>• Double cup holders at the front</li> <li>• Third brake light in LED technology</li> <li>• ECO start-stop function</li> <li>• Chassis: Comfort chassis</li> <li>• Electric parking brake</li> <li>• Luggage net on driver and passenger backrest</li> <li>• Transmission: Automatic 8G-DCT</li> <li>• Interior headliner fabric crystal grey</li> <li>• THERMATIC automatic climate control</li> <li>• Front headrests height adjustable</li> <li>• Steering wheel shift paddles</li> <li>• Steering: Direct Steering</li> <li>• Light and rain sensor</li> <li>• Net in the passenger footwell</li> <li>• Package: Seat comfort</li> <li>• Radio: MBUX multimedia system</li> <li>• Radio accessories: Communication module (LTE) for the use of Mercedes me connect services</li> <li>• Tire pressure monitoring (TPMS)</li> <li>• Windscreen wipers with rain sensor</li> <li>• Seats: iSize child seat anchorages with Top Tether on the outer seats</li> <li>• Lane Keeping Assist, active</li> <li>• socket (12 V)</li> <li>• Cruise control</li> <li>• High-visibility vest for drivers</li> <li>• Central locking</li> </ul> | <ul style="list-style-type: none"> <li>• Airbag for driver and front passenger</li> <li>• Airbag: Automatic passenger airbag deactivation</li> <li>• Airbag: Sidebag for driver and front passenger</li> <li>• Anti-lock braking system (ABS)</li> <li>• Armrest for driver and passenger foldable</li> <li>• Exterior mirrors left and right, heated and electrically adjustable, painted in body color</li> <li>• diesel particulate filter</li> <li>• tachometer</li> <li>• DYNAMIC SELECT</li> <li>• Electronic Stability Program (ESP)</li> <li>• 4-way electric window lifter</li> <li>• Velour floor mats in black</li> <li>• Speed Limit Assistant</li> <li>• Lockable glove compartment</li> <li>• KEYLESS-GO start function</li> <li>• Rear headrests (3)</li> <li>• Paint finish: Uni</li> <li>• Steering wheel: Multifunction sports steering wheel in leather</li> <li>• Mercedes-Benz emergency call system</li> <li>• Package: Light and Vision Package</li> <li>• Radio: Advanced functions MBUX</li> <li>• Radio accessories: Digital radio (DAB)</li> <li>• Radio accessories: USB interface in spontaneous storage &amp; 2 USB interfaces in the rear center console</li> <li>• Gear lever with additional elements in silver chrome</li> <li>• CLA-Class seat belts</li> <li>• Seats: Comfort seats</li> <li>• Seats: Seat backrests in the rear can be folded down 40:20:40</li> <li>• Bumpers in body color</li> <li>• Touchpad</li> <li>• Electronic immobilizer</li> <li>• Carbon-look decorative elements</li> </ul> |
|---|---|

### Extra equipment

- |   |  |
|---|--|
| <ul style="list-style-type: none"> <li>• Storage compartment in center console with roller blind</li> <li>• Paintwork: Uni special paint</li> <li>• Navigation accessories: Pre-installation for Live Traffic Information</li> <li>• Package: Business (hard drive navigation - smartphone integration - traffic sign assistant - preparation for digital key handover - navigation connectivity package - seat heating for driver and front passenger - active parking assistant with PARKTRONIC)</li> <li>• Package: Parking package with rear view camera (including Active Parking Assistant with PARKTRONIC rear view camera)</li> </ul> | <ul style="list-style-type: none"> <li>• Ambient lighting with 64 different colors</li> <li>• LED High-Performance Headlights (LED High-Performance Headlights offer greater safety at night and a distinctive, striking look. Thanks to LED technology, they illuminate the road better than conventional headlights – while consuming less energy.)</li> </ul> |
|---|--|



- Package: Mirror package (interior and exterior mirrors on the driver's side automatically dimming - exterior mirrors left and right electrically folding)
  - Upholstery: ARTICO man-made leather for comfort seats
  - Wheels: 45.7 cm (18") light alloy wheels, 4-spoke design (black high-gloss painted and high-sheen with 225/45 R 18 on 7.5 J x 18 ET 49)
  - Elimination of type marking on the trunk lid
- Package: MBUX High-End Package (Hard Drive Navigation - Pre-installation for Live Traffic Information - Traffic Sign Assistant - Navigation Connectivity Package: Hard Drive Navigation, Advanced Navigation Services - Smartphone Integration: Mobile phone via Apple CarPlay and Android Auto with the media system - Pre-installation for digital key handover - Wireless charging system for mobile devices or multifunction telephony - Media Display - Fully digital instrument display - MBUX Augmented Reality for navigation)
  - Seats: 4-way lumbar support for driver and front passenger
  - Seat heating for driver and front passenger
  - TIREFIT with tire inflation compressor
  - Decorative elements in dark carbon look

### Brief expert findings

Documents submitted	At the time of the inspection, the registration certificate Part 2 (letter) was available, but the registration certificate Part 1 (certificate) was not. (Copy)
VIN comparison	The vehicle identification number (VIN) was read from the vehicle and its conformity with the submitted documents was verified during the inspection by the undersigned.
Inspection	The inspection conditions were sufficient for the assessment of the vehicle. Lifting equipment and a pit were available for examining the vehicle.
Test drive	No test drive/maneuvering was carried out during the inspection of the vehicle.
Engine function test	An engine test run was performed.

### Value reducing factors

No.	Component group	Description
1	Wheel / tyres	Alloy rim - rear right side - Scratch(es) - Loss in value
2	Door - front left side	Strip - outer - Scratch(es) - Replace
3	Wheel / tyres	Alloy rim - front right side - Scratched - Replace
4	Door - front left side	Door - Dent / paintcoat damage - Repair and paint
5	Bonnet	Bonnet (Lack eingefallen) - Unprofessionally repaired - Repair and paint
6	Vehicle glazing	Windscreen - Broken / torn - Replace

### Wear and tear

No.	Component group	Description
1	Steering system	Steering wheel - Worn - No deduction
2	Side panel - rear right side	Side panel - Scratch(es) - No deduction
3	Door - rear right side	Door - Scratch(es) - No deduction

The vehicle shows signs of wear commensurate with its age and use.

### Repainting

#### No. Repainting

- |   |   |
|---|---|
| 1 | Bonnet, Unprofessionally carried out, Invoice of repair done Non-existent |
|---|---|

### Paint coat thickness measurement

Bonnet	967 µm
--------	--------



## Order/Scope of order

The order was placed to prepare a sales report for the vehicle described. This includes the following:

- Description of core relevant information about the vehicle
- Documentation of equipment features  
(*Delivery by third-party service providers*)
- Documentation of damage, defects, missing parts
- Documentation of previous damage, unrepaired previous damage, repainting
- a brief visual or functional inspection of the equipment details if possible.  
(*Functional tests of driver assistance systems are not included in the scope of services!*)
- a photo documentation of the vehicle

## Basis for the order

This product is based on the Alphabet Fuhrpark GmbH guidelines for vehicle returns and valuations. The expert makes the explicit findings in each individual case objectively within the framework of the specified standards based on his or her own expertise.

The vehicle inspection takes place in a disassembled state.

Damage or defects that can only be detected during disassembly/diagnosis work or through advanced knowledge remain within the scope of the prognosis risk. An extended risk exists for concealed defects caused by fraudulent deception and not identifiable by the expert.

Damage or defects resulting from normal use or wear and tear of the vehicle will be accepted according to the applicable standard.

There was no explicit identification or monetary consideration of the expected features within the product.

Features which in their nature and severity slightly exceed normal use but do not constitute unacceptable damage will be documented and identified under signs of use if necessary.

Damage or defects which, according to the underlying standard, can no longer be attributed to normal use or wear and tear are listed in the product under "Depreciating Factors".

Depending on the product specification, a monetary ID can be provided. If this takes place, the costs can be 100% d or pro rata depending on the vehicle's age and mileage.

## Previous damages

Apparently, no repaired previous damage could be found on the vehicle.

## Comments

- Winterradsatz ist kein Bestandteil des Auslieferungsumfangs





**Figure 1:** Diagonal front (left)



**Figure 2:** Diagonal front (right)



**Figure 3:** Diagonal rear (left)



**Figure 4:** Diagonal rear (right)



**Figure 5:** Interior - front



**Figure 6:** Interior - rear





Figure 7: Instrument cluster



Figure 8: Instrument panel



Figure 9: Interior 360° view



Figure 10: Cargo area

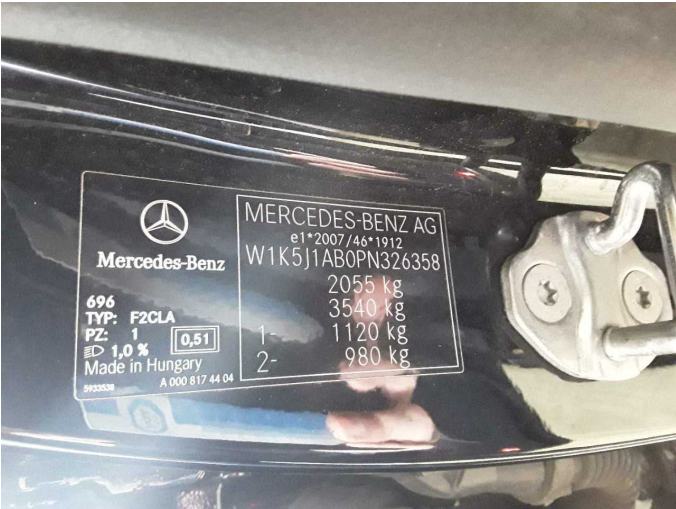


Figure 11: VIN



Figure 12: Mounted tyres





Figure 13: Documents



Figure 14: Documents



Figure 15: Documents



Figure 16: Additional tyres



Figure 17: Navigation



Figure 18: Misc.





Figure 19: Misc.



Figure 20: Misc.



Figure 21: Misc.



Figure 22: Misc.



Damage 1: Wheel / tyres: Alloy rim - rear right side - Scratch(es) - Loss in value



Damage 1: Wheel / tyres: Alloy rim - rear right side - Scratch(es) - Loss in value





**Damage 2:** Door - front left side: Strip - outer - Scratch(es) - Replace



**Damage 2:** Door - front left side: Strip - outer - Scratch(es) - Replace



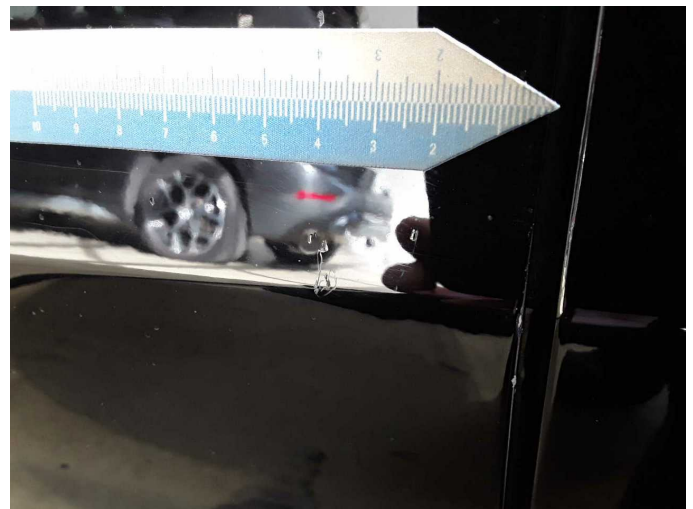
**Damage 3:** Wheel / tyres: Alloy rim - front right side - Scratched - Replace



**Damage 3:** Wheel / tyres: Alloy rim - front right side - Scratched - Replace

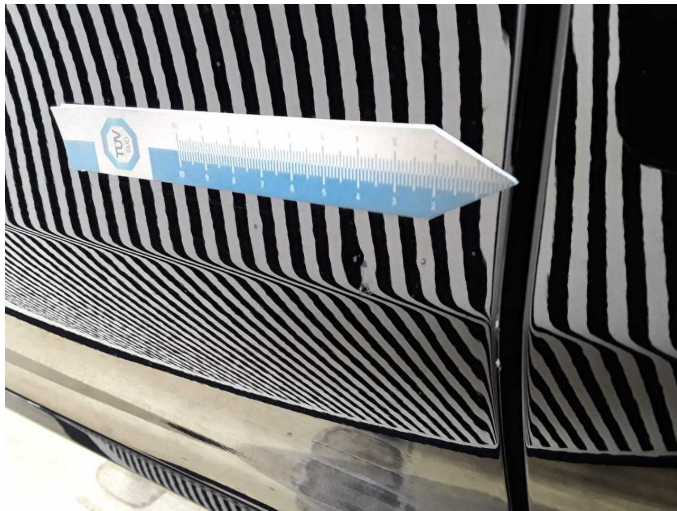


**Damage 4:** Door - front left side: Door - Dent / paintcoat damage - Repair and paint



**Damage 4:** Door - front left side: Door - Dent / paintcoat damage - Repair and paint

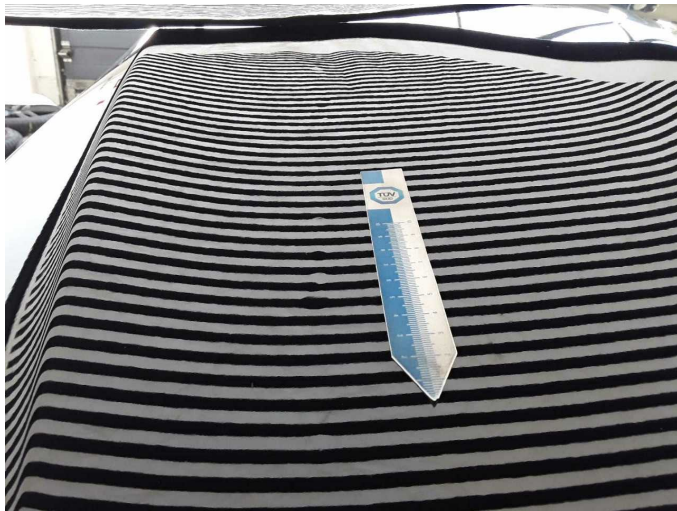




**Damage 4:** Door - front left side: Door - Dent / paintcoat damage - Repair and paint



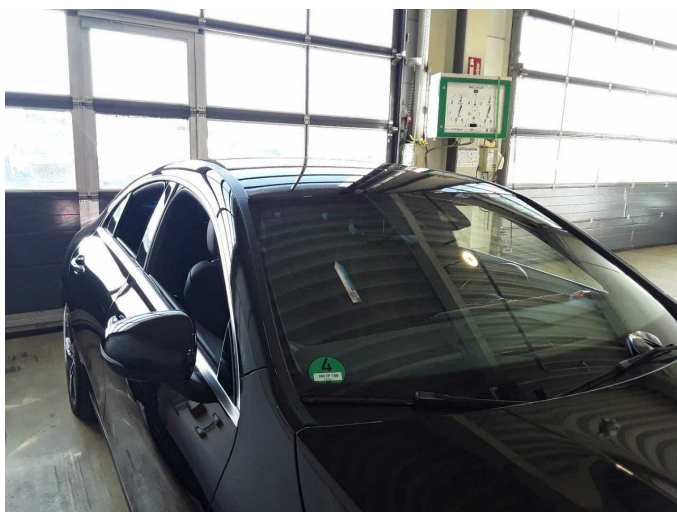
**Damage 5:** Bonnet: Bonnet (Lack eingefallen) - Unprofessionally repaired - Repair and paint



**Damage 5:** Bonnet: Bonnet (Lack eingefallen) - Unprofessionally repaired - Repair and paint



**Damage 5:** Bonnet: Bonnet (Lack eingefallen) - Unprofessionally repaired - Repair and paint



**Damage 6:** Vehicle glazing: Windscreen - Broken / torn - Replace



**Damage 6:** Vehicle glazing: Windscreen - Broken / torn - Replace





**Repainting 1: Bonnet**



**Repainting 1: Bonnet**



# Wartungshistorie

(gemäß Auftraggeber Informationen)

Fahrgestellnummer: W1K5J1AB0PN326358

Hersteller / Modell: MERCEDES-BENZ MB CLA 180 d 8G-DCT Progressive

Datum	KM-Stand	Beschreibung
09.09.2025	143.680	HU + AU
21.05.2025	130.357	Regelwartungsdienst
18.11.2024	103.989	Regelwartungsdienst
13.06.2024	78.952	Regelwartungsdienst
18.03.2024	63.364	Bremsscheiben+Beläge v+h
29.11.2023	50.750	Regelwartungsdienst
17.04.2023	25.384	Regelwartungsdienst