



Expertise

Protocol number: 41238108  
Order No. / Reference: 25113347  
Inspection date: 25 Aug 2025

Manufacturer: Mercedes-Benz  
VIN: W1K4F8GB3PJ426880

Model: B 250 e 8G-DCT Progressive



Vehicle details	
Manufacturer / Type / Model / Equipment	
Mercedes-Benz B 250 e 8G-DCT Progressive	
Vehicle Identification number	W1K4F8GB3PJ426880
Mileage (Read)	30,695 km
First registration	5 Aug 2022
Number of holders	1
Power / Engine displacement	118 kw / 1,332 ccm
Fuel type / Cylinder	Hybr.B/E ext. edition / 4
Gearbox / Number of gears	Automatic / 8
Type of drive	Front drive
Type of vehicle	Station wagon
Colour / colour code	MOUNTAINGRAU - METALLICLACK
Doors / Seats	5 / 5
Upholstery type	Cloth / leather combination
Colour of upholstery	Black



## Vehicle details

<b>Maintenance booklet / proof</b>	digital proof / complete	<b>Next maintenance in</b>	161 Tag(e)
<b>Last maintenance on / at</b>	01/2025 at 24,693 km		
<b>Key is / should be</b>	2 / 2	<b>FZG documents</b>	ZB#2 (B) was available (copy), ZB#1 (S) was not available
		<b>Letter No.</b>	GJ507717
<b>Previous damage / Accident</b>	None detectable	<b>Repainting</b>	None detectable
<b>Inspection conditions</b>	sufficient	<b>Lifting equipment / pit</b>	yes
<b>Test drive</b>	Not performed	<b>Engine function test</b>	Performed
<b>Manufacturer key number/ type code number</b>	2222 / ASD 00073		
<b>Emission standard</b>	EURO6;WLTP;AP;PI/CI; M, N1 I	<b>Fine dust sticker</b>	
<b>Permitted total weight</b>	2,225 kg	<b>Empty weight</b>	

## Tyres

### Mounted tyres

#	Tyre size	Type of tyre	Manufacturer	Tread depth
1)	205/55 R17 91W	Summer tyres on Light alloy	Pirelli	5mm / 5mm
2)	205/55 R17 91W	Summer tyres on Light alloy	Pirelli	5mm / 5mm

### Additional tyres

#	Tyre size	Type of tyre	Manufacturer	Tread depth
1)	205/55 R17 91H	Winter tyres on Light alloy	Hankook	5mm / 5mm
2)	205/55 R17 91H	Winter tyres on Light alloy	Hankook	5mm / 5mm

**Legend:** Tread depth information for tires on the left is in the first place, for tires on the right is in the second place on the axle in the direction of travel

## Equipment

### Standard equipment

- |   |   |
|---|---|
| <ul style="list-style-type: none"> <li>• ADAPTIVE BRAKE with hill start assist, HOLD function, pre-filling and dry braking in wet conditions</li> <li>• Airbag: Kneebag for driver</li> <li>• Airbag: Windowbag</li> <li>• Anti-lock braking system (ABS)</li> <li>• Armrest in center console for driver and front passenger, foldable</li> <li>• Outside temperature display</li> <li>• Brake assist, active</li> <li>• Double cup holders at the front</li> <li>• DYNAMIC SELECT</li> <li>• Door sills with "Mercedes-Benz" lettering</li> <li>• Chassis: Comfort chassis</li> <li>• Velour floor mats</li> <li>• Speed Limit Assistant</li> <li>• Halogen headlights with integrated LED daytime running lights</li> <li>• Rear window wiper with interval control</li> <li>• Interior headliner fabric crystal grey</li> <li>• KEYLESS-GO start function</li> <li>• THERMATIC automatic climate control</li> <li>• Headrests in the rear (3)</li> <li>• Front headrests height adjustable</li> <li>• 4-way loading eyelets</li> <li>• Charging cable for household socket, 5m, smooth</li> <li>• Charging system: Alternating current charging system (AC charging) 3.7 kW</li> <li>• Steering column mechanically adjustable in height and length</li> <li>• Mercedes-Benz emergency call system</li> <li>• Package: Light and Vision Package</li> <li>• Package: Seat comfort</li> <li>• Radio: Advanced functions MBUX</li> <li>• Radio accessories: Digital radio (DAB)</li> <li>• Remote Services Plus</li> <li>• Windscreen wipers with rain sensor</li> <li>• Seat belts B-Class</li> <li>• Seats: Seat backrests in the rear can be folded down 40:20:40</li> <li>• socket (12 V)</li> <li>• Cruise control</li> <li>• High-visibility vest for drivers</li> <li>• Heat-insulating glass, green all around</li> <li>• Decorative elements spiral optics</li> </ul> | <ul style="list-style-type: none"> <li>• Airbag for driver and front passenger</li> <li>• Airbag: Automatic passenger airbag deactivation</li> <li>• Airbag: Sidebag for driver and front passenger</li> <li>• Acoustic environmental protection</li> <li>• Traction control (ASR)</li> <li>• ATTENTION ASSIST</li> <li>• Exterior mirrors left and right heated, electrically adjustable from the inside</li> <li>• Glasses compartment for driver</li> <li>• Third brake light in LED technology</li> <li>• ECO start-stop function</li> <li>• Electronic Stability Program (ESP)</li> <li>• 4-way electric window lifter</li> <li>• Luggage net on driver and passenger backrest</li> <li>• Transmission: Automatic 8G-DCT</li> <li>• Rear lights with tail and brake lights in LED light guide technology</li> <li>• Heated rear window with timer control</li> <li>• ISOFIX child seat attachment with Top Tether in the rear</li> <li>• Mechanical child safety lock</li> <li>• Communication module (LTE) for the use of Mercedes me connect services</li> <li>• Radiator cover with silver painted double louvre and chrome insert</li> <li>• Load compartment cover (roller blind)</li> <li>• LED indicators integrated into the exterior mirrors</li> <li>• Steering wheel: Multifunction sports steering wheel in leather</li> <li>• Steering: parameter steering</li> <li>• Gasoline particulate filter</li> <li>• Package: Non-smoking</li> <li>• Upholstery: ARTICO man-made leather/Fléron fabric</li> <li>• Radio: MBUX multimedia system</li> <li>• Tire pressure monitoring (TPMS)</li> <li>• Wheels: 43.2 cm (17") light alloy wheels, 4-spoke design</li> <li>• Service interval display ASSYST</li> <li>• Seats: Comfort seats</li> <li>• Seats: Front seats mechanically adjustable</li> <li>• Lane Keeping Assist, active</li> <li>• Bumpers in body color</li> <li>• Touchpad</li> <li>• Electronic immobilizer</li> <li>• Central locking</li> </ul> |
|---|---|

### Extra equipment

- |  |  |
|--|--|
| <ul style="list-style-type: none"> <li>• Airbag: Sidebags in the rear left and right</li> <li>• Paint finish: metallic (according to sample card)</li> </ul> | <ul style="list-style-type: none"> <li>• Head-up display (projects important information into the direct field of vision on the windscreen)</li> </ul> |
|--|--|



- LED High-Performance Headlights (LED High-Performance Headlights offer greater safety at night and a distinctive, striking look. Thanks to LED technology, they illuminate the road better than conventional headlights – while consuming less energy.)
- Wheels: Winter complete wheels M+S 4-piece 43.2 cm (17") (10-spoke alloy wheels painted vanadium silver with 205/55 R 17 on 6.5 J x 17 ET44)
- Seats: Folding passenger seat
- Blind Spot Assist (maintains an overview for you when changing lanes and can detect objects in the vehicle's blind spot. This can prevent collisions on multi-lane city streets or highways. When stationary for an additional three minutes: If the assistant detects two-wheelers or pedestrians in the danger zone, it issues a visual and audible warning.)
- Package: Business for 250e (hard drive navigation - smartphone integration - traffic sign assistant - preparation for digital key handover - connectivity package navigation - seat heating for driver and front passenger - active parking assistant with PARKTRONIC - public charging package - charging cable for wallbox and public charging stations, 5m, smooth - remote and charging services plus)
- Seats: 4-way lumbar support for driver and front passenger
- Seats: Electrically adjustable driver's seat with memory function (The memory function saves the ideal position of the driver's seat, exterior mirrors, and head-up display for you. Up to three people can instantly find their perfect position at the touch of a button, making driver changes uncomplicated and comfortable. You can easily and continuously adjust the seat electrically.)
- Heat-insulating glass dark tinted (rear side windows and rear window)

### Brief expert findings

Documents submitted	At the time of the inspection, the registration certificate Part 2 (letter) was available, but the registration certificate Part 1 (certificate) was not. (Copy)
VIN comparison	The vehicle identification number (VIN) was read from the vehicle and its conformity with the submitted documents was verified during the inspection by the undersigned.
Inspection	The inspection conditions were sufficient for the assessment of the vehicle. Lifting equipment and a pit were available for examining the vehicle.
Test drive	No test drive/maneuvering was carried out during the inspection of the vehicle.
Engine function test	An engine test run was performed.

### Value reducing factors

No.	Component group	Description
1	Boot lid / rear door	Boot lid - Glued / labelled - De-glue / neutralise
2	Mudguard - right side	Mudguard - right side - Dent / paintcoat damage - Repair and paint

### Wear and tear

No.	Component group	Description
1	Bonnet	Bonnet - Stone chips - No deduction
2	Vehicle glazing	Windscreen - Stone chips - No deduction
3	Rear bumper	Rear bumper - Scratch(es) - No deduction
4	Front bumper	Front bumper - Stone chips - No deduction
5	Interior	Interior - Scratch(es) - No deduction

The vehicle shows signs of wear commensurate with its age and use.



## Order/Scope of order

The order was placed to prepare a sales report for the vehicle described. This includes the following:

- Description of core relevant information about the vehicle
- Documentation of equipment features  
(*Delivery by third-party service providers*)
- Documentation of damage, defects, missing parts
- Documentation of previous damage, unrepaired previous damage, repainting
- a brief visual or functional inspection of the equipment details if possible.  
(*Functional tests of driver assistance systems are not included in the scope of services!*)
- a photo documentation of the vehicle

## Basis for the order

This product is based on the Alphabet Fuhrpark GmbH guidelines for vehicle returns and valuations. The expert makes the explicit findings in each individual case objectively within the framework of the specified standards based on his or her own expertise.

The vehicle inspection takes place in a disassembled state.

Damage or defects that can only be detected during disassembly/diagnosis work or through advanced knowledge remain within the scope of the prognosis risk. An extended risk exists for concealed defects caused by fraudulent deception and not identifiable by the expert.

Damage or defects resulting from normal use or wear and tear of the vehicle will be accepted according to the applicable standard.

There was no explicit identification or monetary consideration of the expected features within the product.

Features which in their nature and severity slightly exceed normal use but do not constitute unacceptable damage will be documented and identified under signs of use if necessary.

Damage or defects which, according to the underlying standard, can no longer be attributed to normal use or wear and tear are listed in the product under "Depreciating Factors".

Depending on the product specification, a monetary ID can be provided. If this takes place, the costs can be 100% d or pro rata depending on the vehicle's age and mileage.

## Previous damages

Apparently, no repaired previous damage could be found on the vehicle.

## Comments

Das Fahrzeug befand sich zum Besichtigungszeitpunkt in beschädigten, nicht demontierten Zustand. Schadenausweitung möglich, Zusatzkosten können entstehen.





Figure 1: Diagonal front (left)



Figure 2: Diagonal front (right)



Figure 3: Diagonal rear (left)



Figure 4: Diagonal rear (right)



Figure 5: Interior - front



Figure 6: Interior - rear





Figure 7: Instrument cluster



Figure 8: Instrument panel



Figure 9: interior 360° view ([Online link](#))



Figure 10: Cargo area



Figure 11: VIN



Figure 12: Mounted tyres





Figure 13: Documents

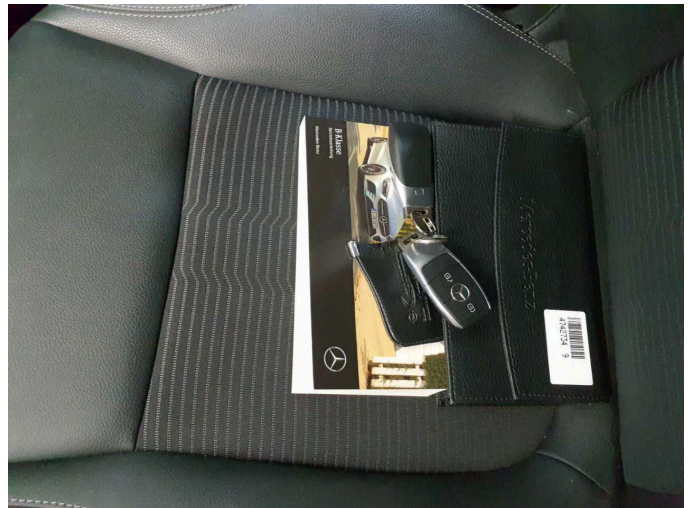


Figure 14: Documents



Figure 15: Additional tyres



Figure 16: Navigation



Figure 17: Misc.

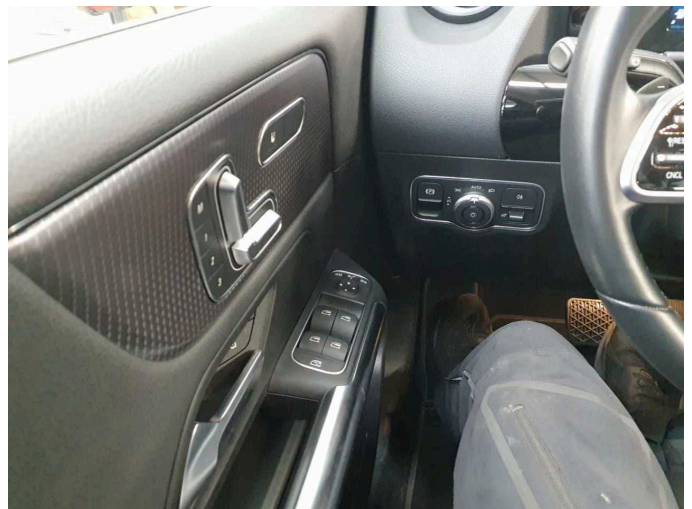


Figure 18: Misc.





Figure 19: Misc.



Figure 20: Misc.

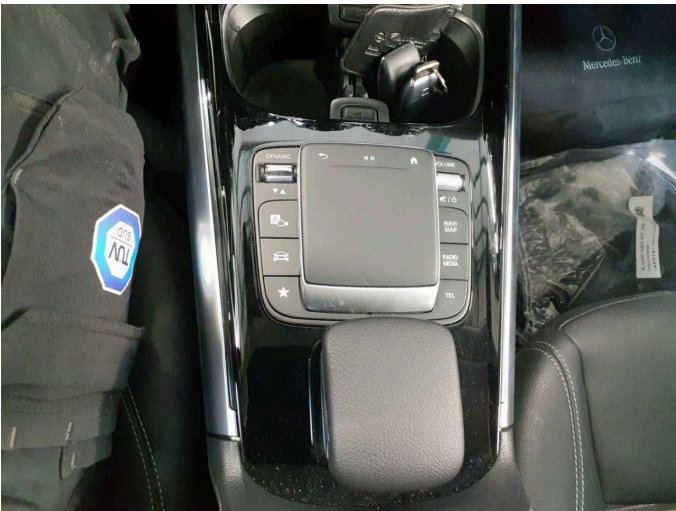


Figure 21: Misc.



Figure 22: Misc.

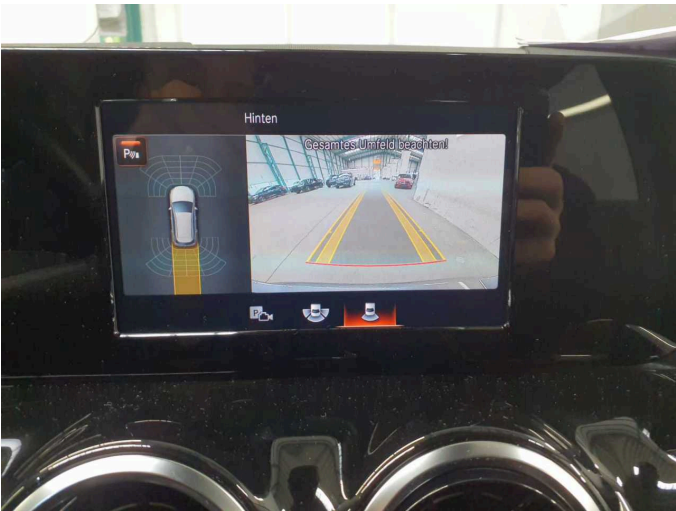


Figure 23: Misc.

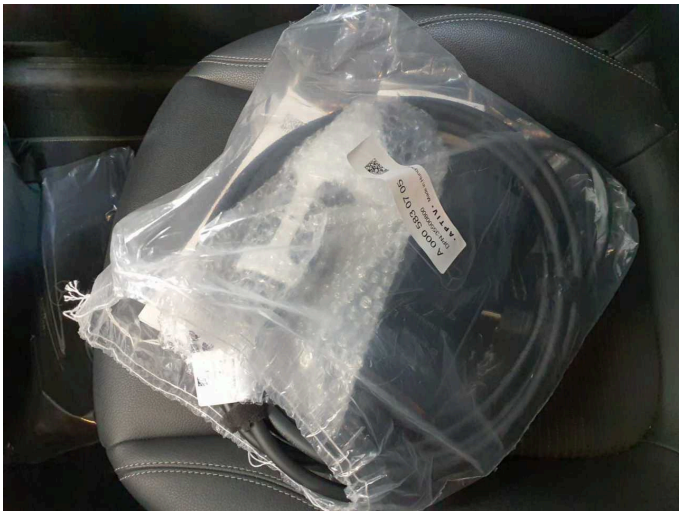


Figure 24: Misc.





Figure 25: Misc.



Figure 26: Misc.

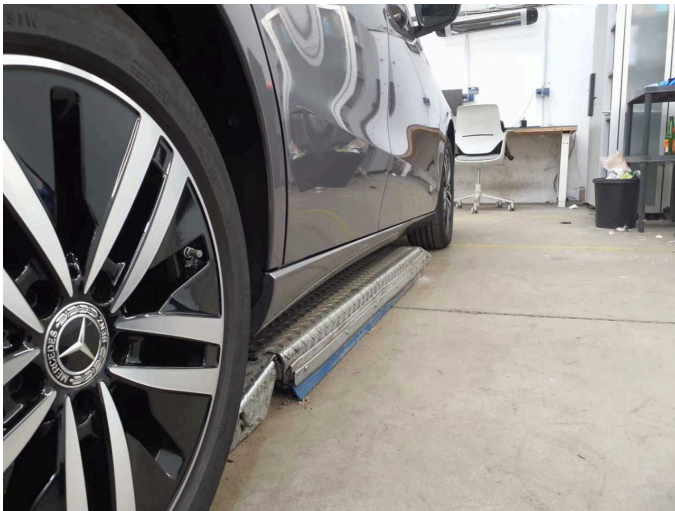


Figure 27: Misc.



Figure 28: Misc.



Figure 29: Misc.



**Damage 1:** Boot lid / rear door: Boot lid - Glued / labelled - De-glue / neutralise





**Damage 1:** Boot lid / rear door: Boot lid - Glued / labelled - De-glue / neutralise



**Damage 2:** Mudguard - right side: Mudguard - right side - Dent / paintcoat damage - Repair and paint



**Damage 2:** Mudguard - right side: Mudguard - right side - Dent / paintcoat damage - Repair and paint



**Damage 2:** Mudguard - right side: Mudguard - right side - Dent / paintcoat damage - Repair and paint





# Wartungshistorie

(gemäß Auftraggeber Informationen)

Fahrgestellnummer: W1K4F8GB3PJ426880

Hersteller / Modell: MERCEDES-BENZ MB B 250 e 8G-DCT Progressive

Datum	KM-Stand	Beschreibung
30.01.2025	24.693	Regelwartungsdienst
05.10.2023	11.811	Regelwartungsdienst