



MERCEDES-BENZ A-Klasse  
AMG A 35 4Matic AMG Speedshift DCT 7G

VIN NO W1K3F5BB5PN295462  
Registration Number B5PN295462



MOT Date	Number of Owners	Number of Keys	Odometer Reading
2025-09-01	1	2	9071 km
Last Service	Last Service Mileage	First Registration Date	Country First Registered
-	-	2022-09-22	Germany

Inspection Report Summary

Customer	BCA Online	Report Number	P20250919111648
Inspection Date / Place	2025-09-19 / BCA Neuss	Cosmetic Grade	1

Vehicle Summary

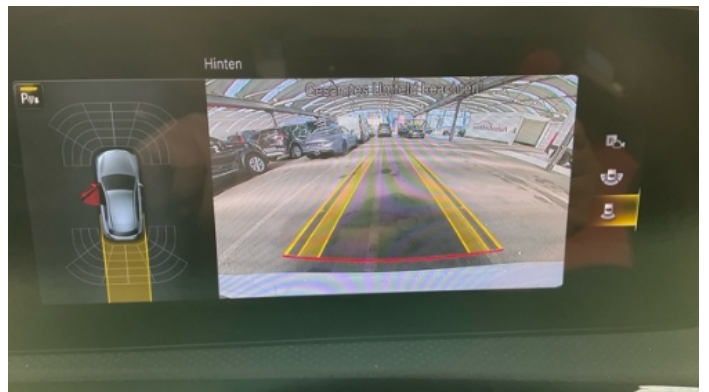
Vehicle Condition	Runner	VAT Type	Qualifying
Fuel Type	Petrol	Road Worthy	Yes
Colour	White	Engine Size (cc)	1991
Engine Size	2.0	No of Doors	5
Body Type	Sedan	Drive Train	All-Wheel-Drive permanent
Seat Colour		No of Seats	5
Seat Covering Name		Seat Covering	Leather
Charging Cables		WLTP CO2 Emissions	
Gearbox Type	Automatic		

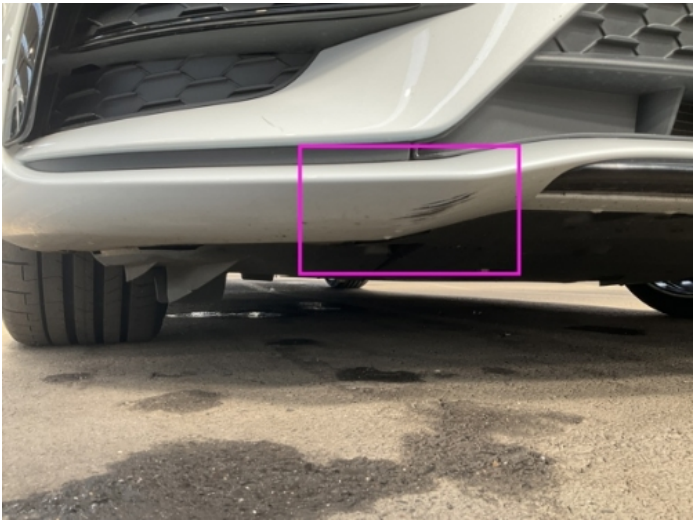
Vehicle History & Documents

Service Book Available	Missing	Next Service Mileage	km
Previous Usage		Imported	No
Manufacturer Warrenty			











Equipment

Traffic sign recognition	Airbag Status	Ambient lighting	Anti-lock braking
Bluetooth telephone interface	Digital Radio	Front parking sensors	Remote central locking
Satellite navigation	Electrically adjustable seats	Emergency brake assist	Leather steering wheel
Rain sensitive windscreen wipers	USB Socket	Alloys wheels	Android Auto
Apple CarPlay	Cruise control	Digital dashboard	Remote adjusting wing mirrors
Reversing Camera	Stability control	Electrically folding wing mirrors	Lane assist
LED Headlamps	Rear parking sensors		

Equipment Details

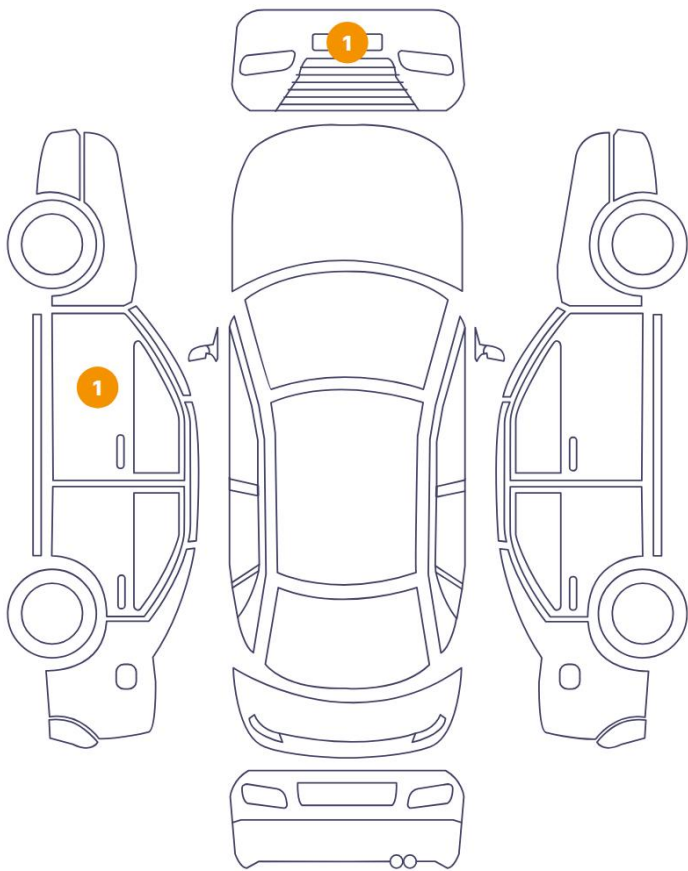
Air Conditioning	Climate Control	Alloy Wheel Size	19
Seat Heating	Front		

Wheels & Tyres

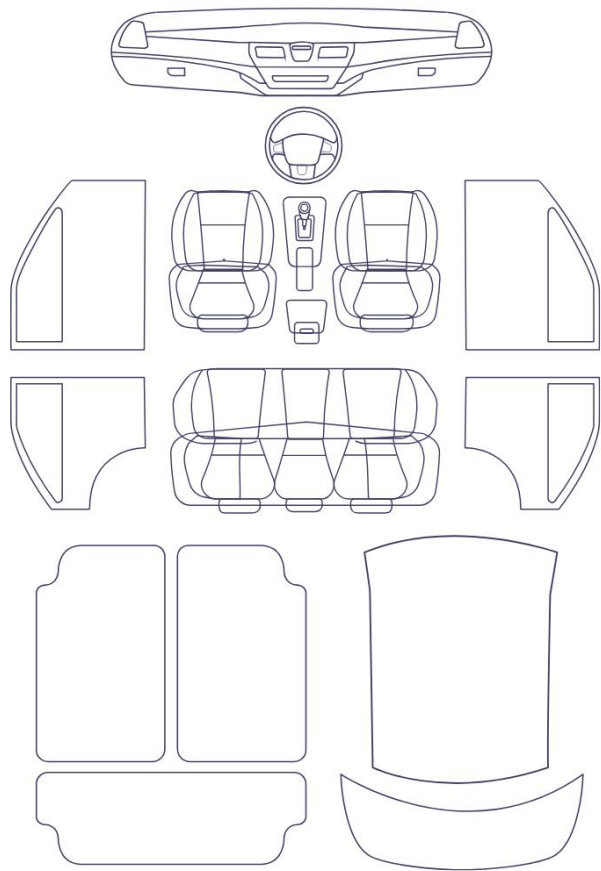
Right Front Tyre Depth	5	Left Front Tyre Depth	5
Right Rear Tyre Depth	5	Left Rear Tyre Depth	5

Cosmetic Damage

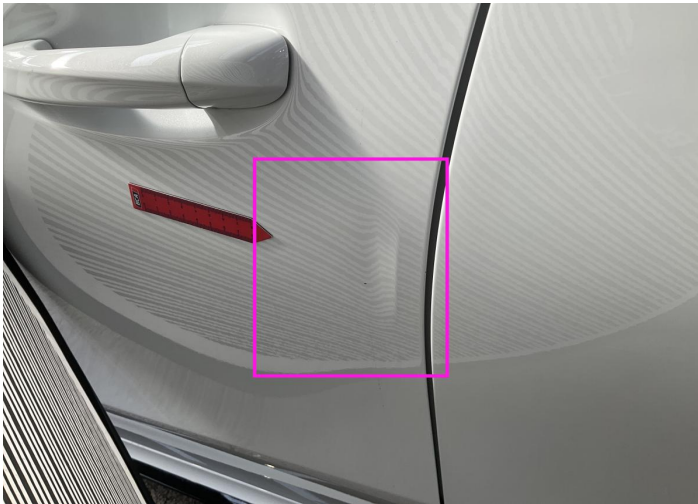
2 Schäden



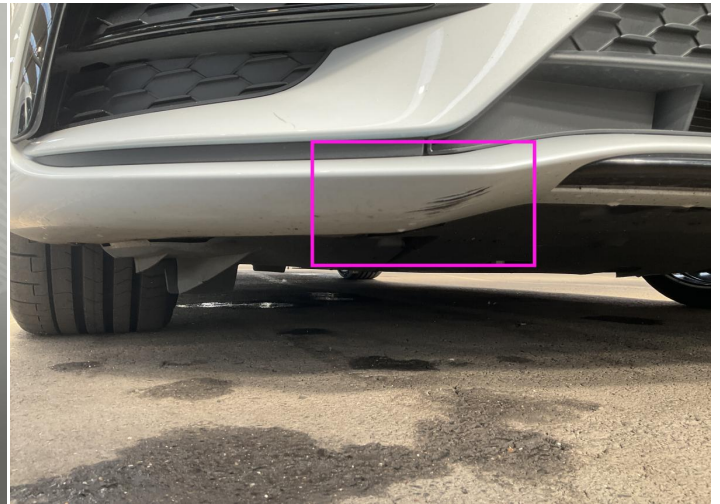
0 Schäden



Component		Damage	Comments
1	Door / Front Left	Bodywork / Dent / Dent	
2	Blade/spoiler / Front	Paint / Scratch / Scuff	



1. Door / Front Left  
Bodywork / Dent / Dent -



2. Blade/spoiler / Front  
Paint / Scratch / Scuff -

## Mechanical Condition

### Control Lights

Display Defect	✓	Service Light	✓
ABS Warning Light	✓	ESP Fault/Traction Control Malfunction Light	✓
Airbag Warning Light	✓	Oil Pressure Warning Light	✓
Brake Warning Light	✓	Power Steering Warning Light	✓
Alternator / Battery	✓	All - wheel Drive	✓
No Dashboard Lights	✓	Tire Pressure Monitoring System	✓

### Equipments Test

Main & Spare Keys Functioning	✓	Electric Windows	✓
Navigation System	✓	Audio Equipment	✓
Parking Sensors / Cameras Functioning	✓		

### Engine

Engine Status / EML	✓	Engine Leak Visible	✓
Engine Starts	✓		

### Gearbox

Gear Box	✓
----------	---

### Levels

Brakes Fluid	NA	Coolant Fluid	✓
--------------	----	---------------	---



Test Drive Inspection

Steering Wheel			
Steering   Noise / Anomaly		✓	
Engine			
Engine Noise	✓	The Gears Scratch / Skip / Abnormal Operation	✓
Fume Quantity	✓	Power Loss	✓
Brake			
Brake System Anomaly		✓	
General			
Test Driven Status		✓	
✓ <i>No troubles detected, good condition or correct tests, according to vehicle age and mileage</i>			
! <i>Damages or malfunction detected that requires repairs by the buyer</i>			
NA <i>Not applicable</i>			
= <i>Not tested</i>			

Disclaimer

Please also note the "UserGuide condition report", which shows the scope of the vehicle description.

[User Guide](#)