



Expertise

Protocol number: 41231907  
Order No. / Reference: 25151995  
Inspection date: 25 Aug 2025

Manufacturer: Mercedes-Benz

Model: E 300 e T 9G-TRONIC Avantgarde

VIN: W1K2132531B056388



Vehicle details	
Manufacturer / Type / Model / Equipment	
Mercedes-Benz E 300 e T 9G-TRONIC Avantgarde	
Vehicle Identification number	W1K2132531B056388
Mileage (Read)	121,404 km
First registration	16 Mar 2022
Number of holders	1
Next periodical technical inspection	05/2027
(Report on hand)	
Power / Engine displacement	155 kw / 1,991 ccm
Fuel type / Cylinder	Hybr.B/E ext. edition / 4
Gearbox / Number of gears	Automatic / 9
Type of drive	Rear drive
Type of vehicle	Station wagon
Colour / colour code	SCHWARZ
Doors / Seats	5 / 5
Upholstery type	Cloth / leather combination
Colour of upholstery	Black-Anthracite
Driving readiness	Not roadworthy / moveable



Vehicle details

Maintenance booklet / proof	digital proof / complete	Next maintenance in	103 Tag(e)
Last maintenance on / at	12/2024 at 107,683 km		
Key is / should be	2 / 2	FZG documents	ZB#2 (B) was available (copy), ZB#1 (S) was not available
		Letter No.	GF810363
Previous damage / Accident	Detectable	Repainting	None detectable
Inspection conditions	sufficient	Lifting equipment / pit	yes
Test drive	Not performed	Engine function test	Performed
Driving readiness	Not roadworthy / moveable		
Roadworthiness	not roadworthy/operational safe		
Manufacturer key number/ type code number	2222 / ATK 00063		
Emission standard	EURO6;WLTP;AP;PI/CI; M, N1 I	Fine dust sticker	
Permitted total weight	2,755 kg	Empty weight	

Tyres

Mounted tyres				
#	Tyre size	Type of tyre	Manufacturer	Tread depth
1)	245/45 R18 100Y	Summer tyres on Light alloy	Goodyear	5mm / 5mm
2)	275/40 R18 103Y	Summer tyres on Light alloy	Goodyear	5mm / 5mm
Additional tyres				
#	Tyre size	Type of tyre	Manufacturer	Tread depth
1)	245/45 R18 100V	Winter tyres on Light alloy	Pirelli	5mm / 5mm
2)	275/40 R18 103V	Winter tyres on Light alloy	Pirelli	4mm / 4mm

Legend: Tread depth information for tires on the left is in the first place, for tires on the right is in the second place on the axle in the direction of travel

## Equipment

### Standard equipment

- ADAPTIVE BRAKE with hill start assist, pre-filling and dry braking in wet conditions
- Airbag: Kneebag for driver
- Airbag: Windowbags left/right
- Premium ambient lighting with 64 colors and 3 color zones
- Anti-lock braking system (ABS)
- Traction control (ASR)
- Attention Assist
- Basic services
- On-board computer
- tachometer
- DYNAMIC SELECT
- EASY-PACK tailgate
- Electronic Stability Program (ESP)
- Chassis: Air suspension on the rear axle with level control
- Electric window lifter with comfort operation and anti-pinch protection, 4-way
- Heated rear window with timer control
- Interior headliner in neva grey fabric
- Climate: Pre-conditioning
- 5-way headrests for driver and front passenger 4-way adjustable and 2-way in the rear
- Charging system: Alternating current charging system (AC charging) 7.4 kW
- Steering column mechanically adjustable in height and length
- Center console piano lacquer look black
- Navigation accessories: Pre-installation for Live Traffic Information
- Package: AVANTGARDE Exterior (for plug-in hybrid)
- Package: Seat comfort
- PRE-SAFE system
- Radio: MBUX multimedia system
- Radio accessories: Communication module (LTE) for the use of Mercedes me connect services
- Windscreen wipers with rain sensor
- Seats: i-Size child seat attachment
- Socket: 12 V socket in the cargo area
- High-visibility vest for drivers
- Heat-insulating glass green all around
- Decorative elements made of aluminum with light longitudinal grain
- Airbag for driver and front passenger
- Airbag: Automatic passenger airbag deactivation
- Airbag: Sidebag for driver and front passenger
- Acoustic environmental protection
- AMG sports pedal system made of brushed stainless steel with rubber studs
- Armrest for driver and passenger foldable
- Exterior mirrors left and right, heated and electrically adjustable, painted in body color
- Brake Assist, active
- Third brake light
- EASY-PACK load compartment cover including EASY-PACK safety net
- Chassis: AGILITY CONTROL chassis with selective damping system
- Velour floor mats
- Transmission: Automatic 9-speed, 9G-TRONIC
- Rear window wiper
- KEYLESS START
- THERMATIC automatic climate control
- Paint finish: Uni
- Charging cable for household socket, 5m, smooth
- LED high-performance headlights
- Steering wheel: Multifunction steering wheel in nappa leather with 3-spoke design
- Mercedes-Benz emergency call system
- Center console with spontaneous storage
- Navigation: Hard drive navigation
- Package: Storage (for plug-in hybrid)
- Package: Public Charging
- Upholstery: ARTICO man-made leather/Norwich fabric
- Radio: Advanced functions MBUX
- Radio accessories: Digital radio
- Tire pressure monitoring
- Remote Services Plus
- Power steering
- Seats: Rear seat backrests foldable 40/20/40 split
- Touchpad
- Electronic immobilizer
- Central locking

### Extra equipment



- Trailer hitch with ESP trailer stabilization (fully electrically foldable and extendable)
- Package: Driver Assistance Package (Active Distance Assist, DISTRONIC including active speed limit assistance, extended automatic restart on the motorway, route-based speed adjustment with end-of-traffic jam function (only when selecting parking packages), Active Steering Assist including active emergency stop assist with SOS function, emergency lane radio, Active Brake Assist including turning and intersection radio, end-of-traffic jam emergency braking radio, Evasive Steering Assist, active lane keeping assist, active blind spot assist including exit warning, pedestrian warning radio, PRE-SAFE PLUS)
- Wheels: 45.7 cm (18") light-alloy wheels in 5-twin-spoke design, painted high-gloss black (high-sheen front: 8 J x 18 ET 43, tire size 245/45 R 18 rear: 9 J x 18 ET 53, tire size 275/40 R 18)
- Seats: Seat heating for driver and front passenger (selectable in three levels - Intelligent and comfortable: The seat heating switches back automatically)
- Package: Business (without MBUX Augmented Reality) (MBUX High-End Package - Connectivity Package Navigation - Traffic Sign Assistant - Smartphone Integration (Apple CarPlay and Android Auto) - Preparation for digital key handover - Widescreen Cockpit - Wireless charging system for mobile devices - Heated seats for driver and front passenger - Parking Package with rearview camera - Fuel tank with a capacity of 66 liters (916) (60 liters for diesel plug-in hybrids).)
- Package: Parking package with 360° camera (including Active Parking Assist with PARKTRONIC and 360° camera)
- Package: Mirrors (both exterior mirrors electrically foldable (button in the driver's door control panel) - automatic lowering of the passenger mirror glass to the parking position when reverse gear is engaged - interior mirror and exterior mirror on the driver's side automatically dimmable - ambient lighting of the exterior mirror to illuminate the entry area)
- Glazing: Heat-insulating, dark-tinted glass all around from the B-pillar (the rear side windows and rear window are made of heat-insulating, dark-tinted glass, protecting rear passengers from prying eyes and direct sunlight – the dark tint also underlines the vehicle's sportiness)

## Brief expert findings

Documents submitted	At the time of the inspection, the registration certificate Part 2 (letter) was available, but the registration certificate Part 1 (certificate) was not. (Copy)
VIN comparison	The vehicle identification number (VIN) was read from the vehicle and its conformity with the submitted documents was verified during the inspection by the undersigned.
Inspection	The inspection conditions were sufficient for the assessment of the vehicle. Lifting equipment and a pit were available for examining the vehicle.
Test drive	No test drive/maneuvering was carried out during the inspection of the vehicle.
Engine function test	An engine test run was performed.
Driving readiness	At the time of inspection, the vehicle was not drivable under its own power, but can be moved on its own axle with the aid of auxiliary equipment.
Roadworthy/operational safe	At the time of the inspection, the vehicle was not operational or roadworthy due to the damage characteristic listed under accident or value-reducing factors.

## Value reducing factors

No.	Component group	Description
1	Bonnet	Bonnet - dent(s) - Smooth repair work
2	Side panel - rear right side	Side panel - dent(s) - Smooth repair work
3	Wheel / tyres	Tyre - rear right side - Damaged - Replace
4	Wheel / tyres	Tyre - front right side - Damaged - Replace
5	Door - front right side	Door - Dent / paintcoat damage - Repair and paint
6	Side panel - rear left side	Side panel - Dent / paintcoat damage - Repair and paint
7	Front bumper	Front bumper - Scratch(es) - Paint
8	Rear bumper	Rear bumper - Scratch(es) - Paint

## Wear and tear



No.	Component group	Description
1	Door - front left side	Door edge - Scratch(es) - No deduction
2	Vehicle glazing	Windscreen - Stone chips - No deduction
3	Door - front right side	Door - Scratch(es) - No deduction
4	Side panel - rear right side	Side panel - Scratch(es) - No deduction
5	Door - front left side	Door (Ganz feine) - dent(s) - No deduction

The vehicle shows signs of wear commensurate with its age and use.

## Previous damages

No.	Previous damage	Extent of damage (Net)
1	Side - left, Provided by user / customer, from 16 Jun 2023	1.716,34 €

## Order/Scope of order

The order was placed to prepare a sales report for the vehicle described. This includes the following:

- Description of core relevant information about the vehicle
- Documentation of equipment features  
(Delivery by third-party service providers)
- Documentation of damage, defects, missing parts
- Documentation of previous damage, unrepaired previous damage, repainting
- a brief visual or functional inspection of the equipment details if possible.  
(Functional tests of driver assistance systems are not included in the scope of services!)
- a photo documentation of the vehicle

## Basis for the order

This product is based on the Alphabet Fuhrpark GmbH guidelines for vehicle returns and valuations. The expert makes the explicit findings in each individual case objectively within the framework of the specified standards based on his or her own expertise.

The vehicle inspection takes place in a disassembled state.

Damage or defects that can only be detected during disassembly/diagnosis work or through advanced knowledge remain within the scope of the prognosis risk. An extended risk exists for concealed defects caused by fraudulent deception and not identifiable by the expert.

Damage or defects resulting from normal use or wear and tear of the vehicle will be accepted according to the applicable standard.

There was no explicit identification or monetary consideration of the expected features within the product.

Features which in their nature and severity slightly exceed normal use but do not constitute unacceptable damage will be documented and identified under signs of use if necessary.

Damage or defects which, according to the underlying standard, can no longer be attributed to normal use or wear and tear are listed in the product under "Depreciating Factors".

Depending on the product specification, a monetary ID can be provided. If this takes place, the costs can be 100% d or pro rata depending on the vehicle's age and mileage.

## Previous damages

According to available information previous damages were repaired at the vehicle. Traces of repairs, which allow conclusions about the area of repair, were not recognizable during the inspection.

## Comments

- Winterradsatz ist kein Bestandteil des Auslieferumfangs.





**Figure 1:** Diagonal front (left)



**Figure 2:** Diagonal front (right)



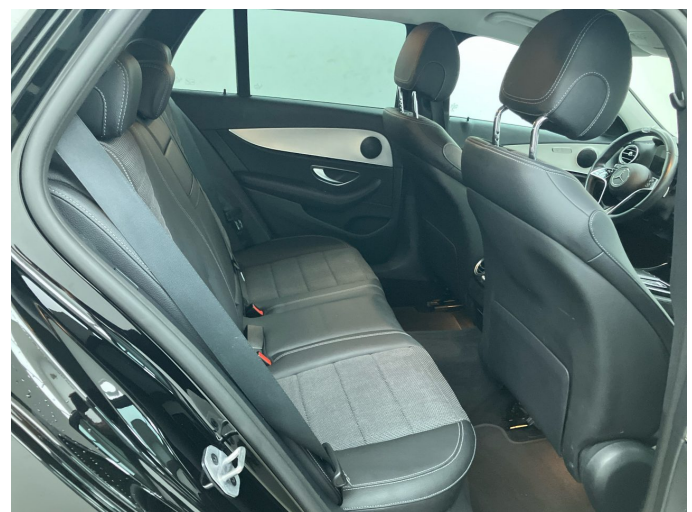
**Figure 3:** Diagonal rear (left)



**Figure 4:** Diagonal rear (right)



**Figure 5:** Interior - front



**Figure 6:** Interior - rear





Figure 7: Instrument cluster



Figure 8: Instrument panel



Figure 9: interior 360° view ([Online link](#))



Figure 10: Cargo area

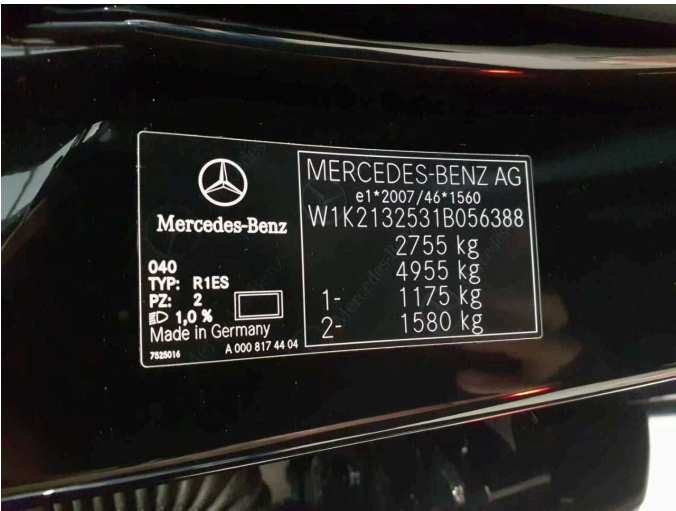


Figure 11: VIN



Figure 12: Mounted tyres





Figure 13: Documents



Figure 14: Documents



Figure 15: Additional tyres



Figure 16: Navigation



Figure 17: Misc.



Figure 18: Misc.



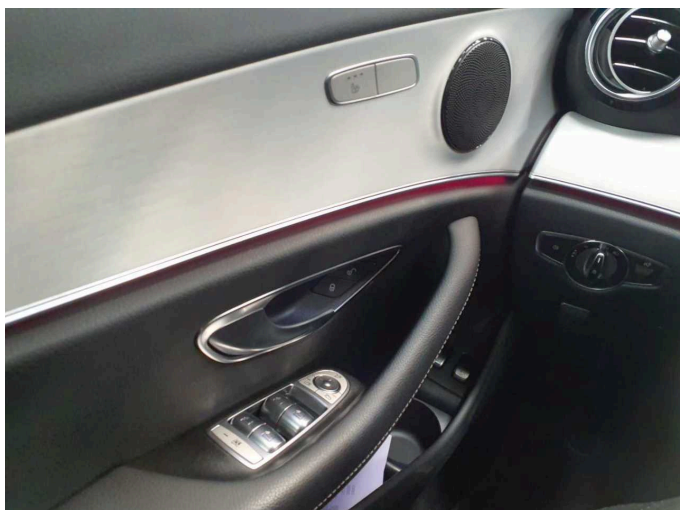


Figure 19: Misc.



Figure 20: Misc.



Figure 21: Misc.



Figure 22: Misc.

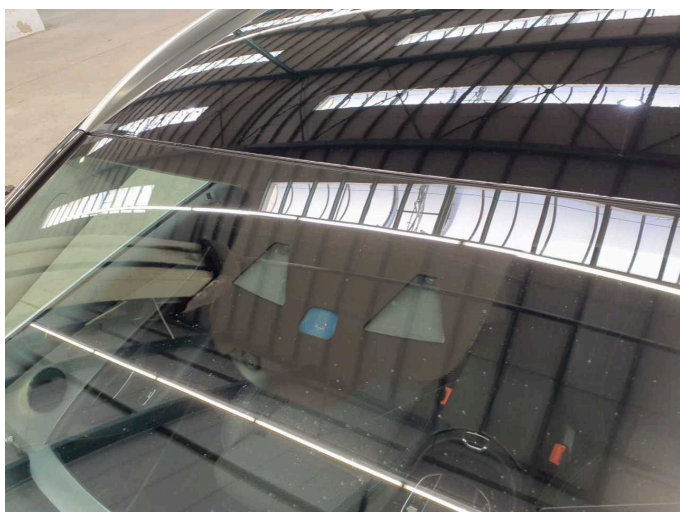


Figure 23: Misc.



Figure 24: Misc.





Figure 25: Misc.



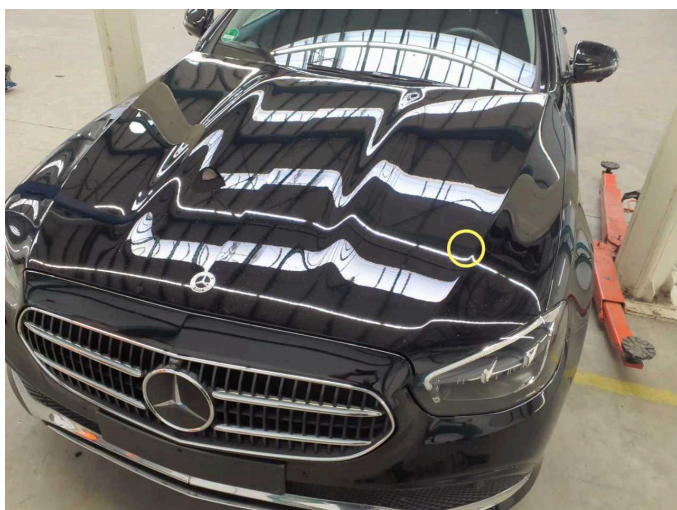
Figure 26: Misc.



Figure 27: Misc.



Figure 28: Misc.

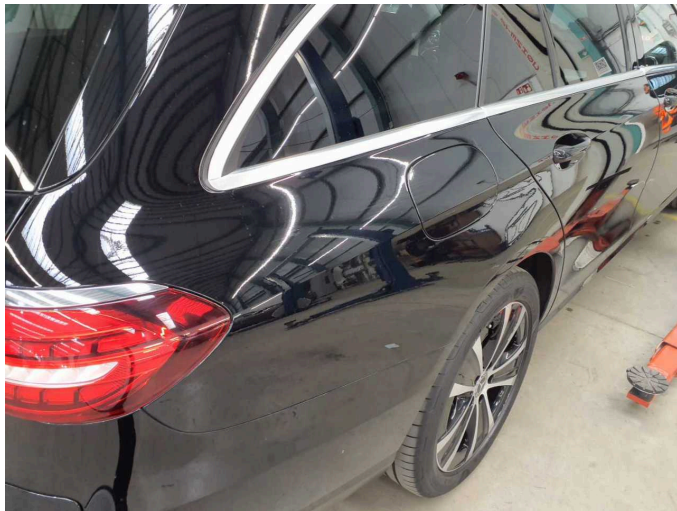


Damage 1: Bonnet: Bonnet - dent(s) - Smooth repair work

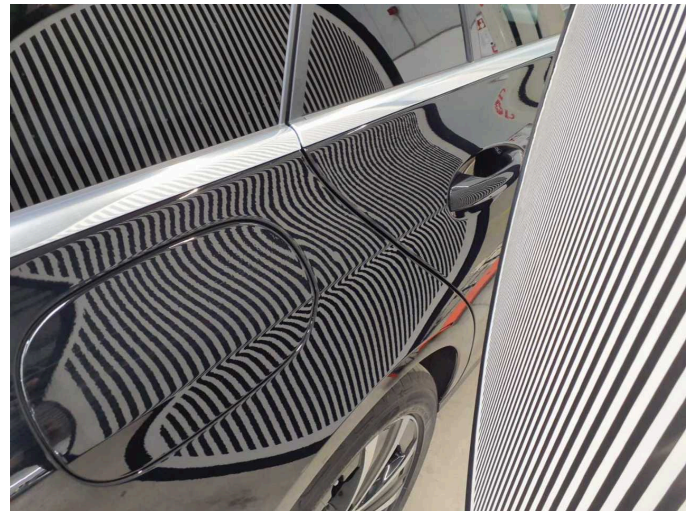


Damage 1: Bonnet: Bonnet - dent(s) - Smooth repair work





**Damage 2:** Side panel - rear right side: Side panel - dent(s) - Smooth repair work



**Damage 2:** Side panel - rear right side: Side panel - dent(s) - Smooth repair work



**Damage 3:** Wheel / tyres: Tyre - rear right side - Damaged - Replace



**Damage 3:** Wheel / tyres: Tyre - rear right side - Damaged - Replace



**Damage 4:** Wheel / tyres: Tyre - front right side - Damaged - Replace

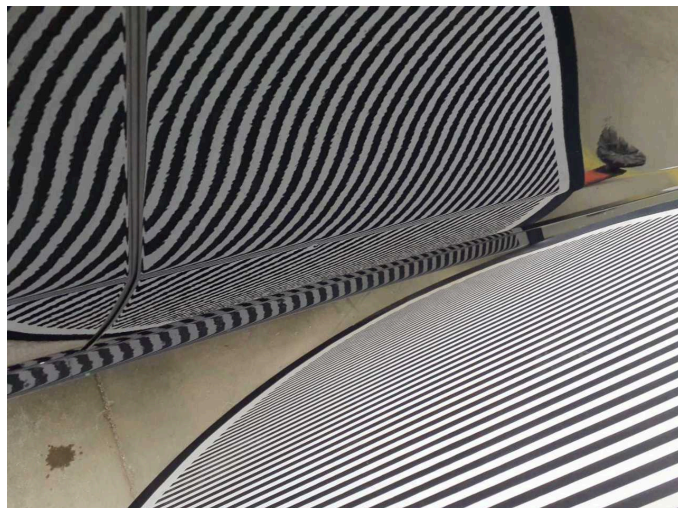


**Damage 4:** Wheel / tyres: Tyre - front right side - Damaged - Replace





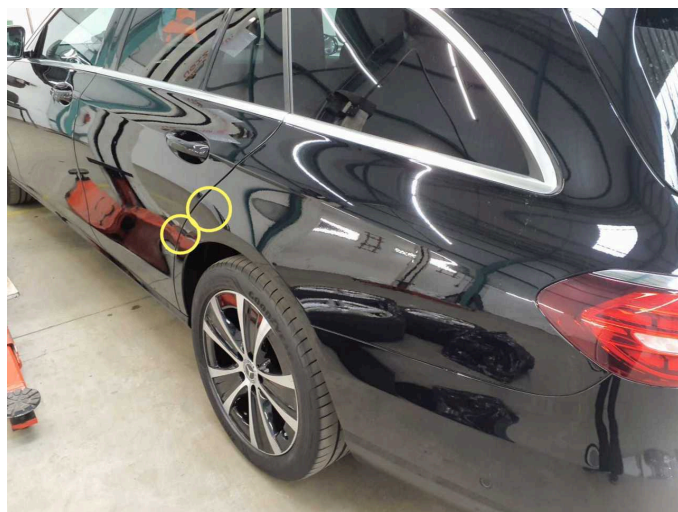
**Damage 5:** Door - front right side: Door - Dent / paintcoat damage - Repair and paint



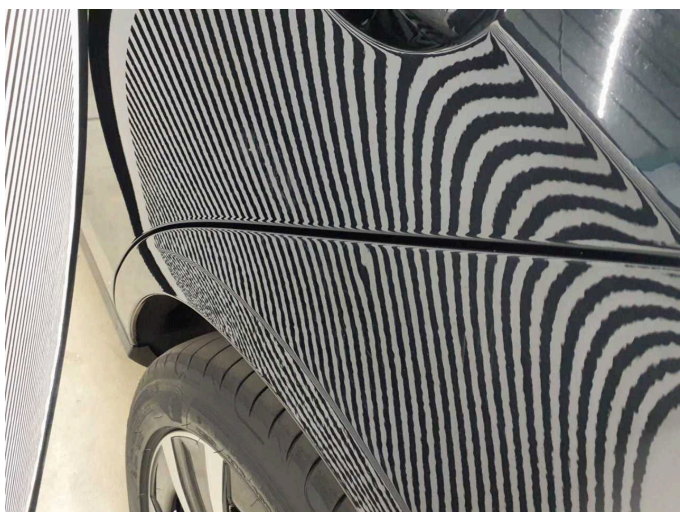
**Damage 5:** Door - front right side: Door - Dent / paintcoat damage - Repair and paint



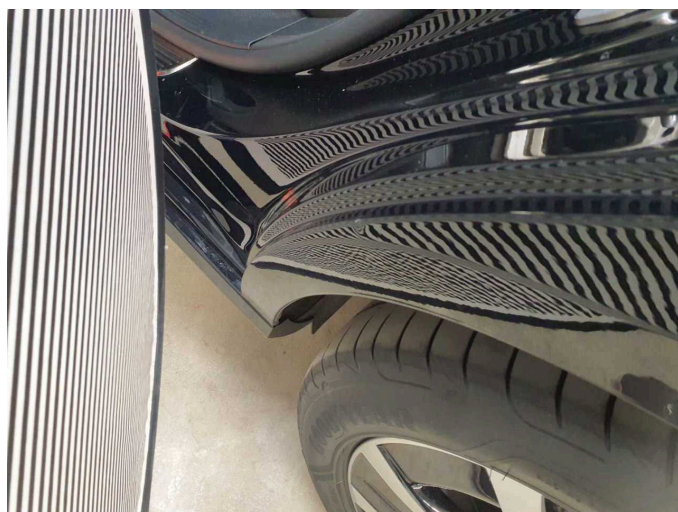
**Damage 5:** Door - front right side: Door - Dent / paintcoat damage - Repair and paint



**Damage 6:** Side panel - rear left side: Side panel - Dent / paintcoat damage - Repair and paint



**Damage 6:** Side panel - rear left side: Side panel - Dent / paintcoat damage - Repair and paint

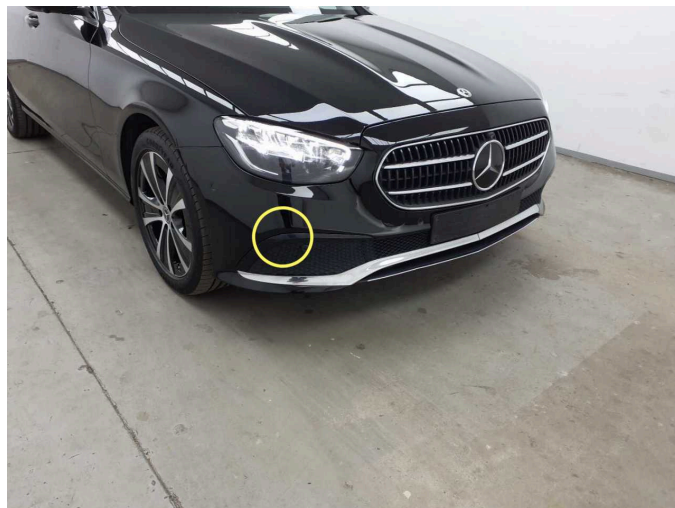


**Damage 6:** Side panel - rear left side: Side panel - Dent / paintcoat damage - Repair and paint

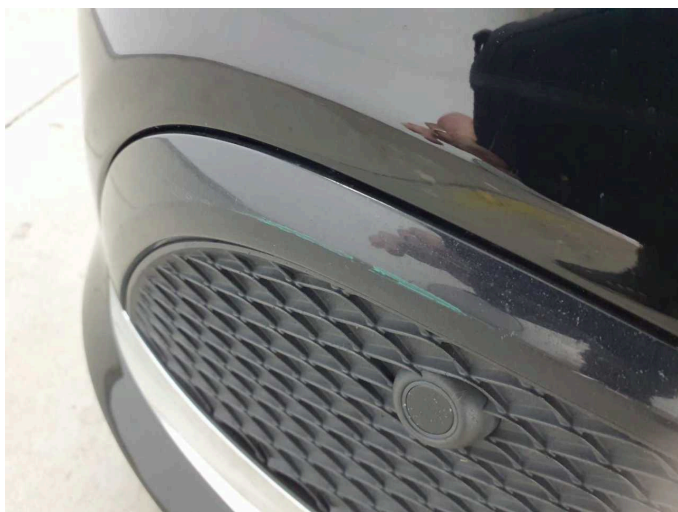




**Damage 6:** Side panel - rear left side: Side panel - Dent / paintcoat damage - Repair and paint



**Damage 7:** Front bumper: Front bumper - Scratch(es) - Paint



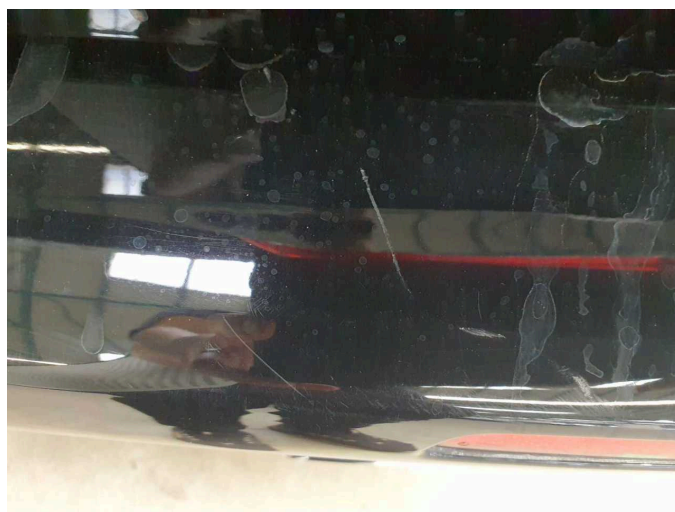
**Damage 7:** Front bumper: Front bumper - Scratch(es) - Paint



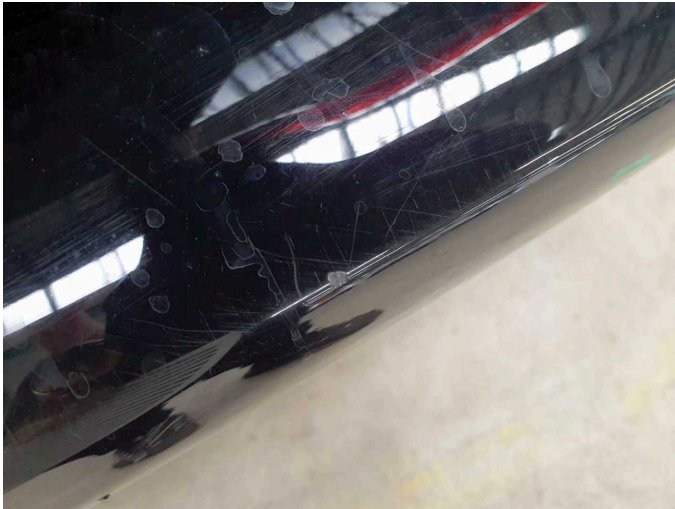
**Damage 7:** Front bumper: Front bumper - Scratch(es) - Paint



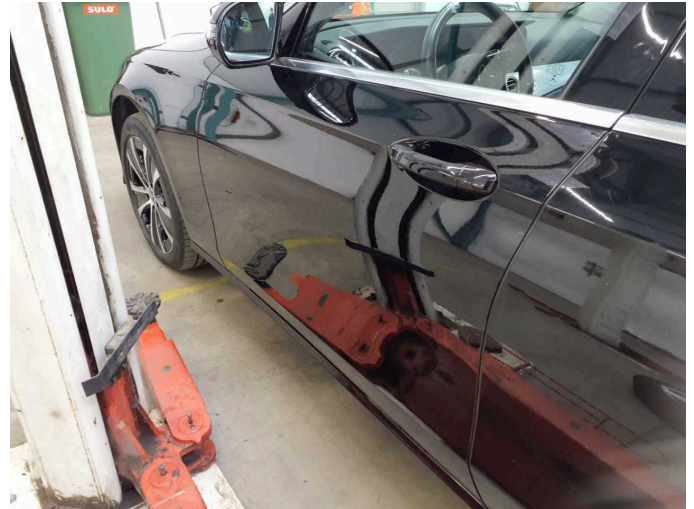
**Damage 8:** Rear bumper: Rear bumper - Scratch(es) - Paint



**Damage 8:** Rear bumper: Rear bumper - Scratch(es) - Paint



**Damage 8:** Rear bumper: Rear bumper - Scratch(es) - Paint



**Wear and tear 5:** Door - front left side: Door (Ganz feine) - dent(s) - No deduction





# Wartungshistorie

(gemäß Auftraggeber Informationen)

Fahrgestellnummer: W1K2132531B056388

Hersteller / Modell: MERCEDES-BENZ MB E 300 e T 9G-TRONIC Avantgarde

Datum	KM-Stand	Beschreibung
05.12.2024	107.683	Regelwartungsdienst
13.10.2023	83.949	Regelwartungsdienst
03.04.2023	52.796	Regelwartungsdienst
10.10.2022	25.845	Regelwartungsdienst