



MERCEDES-BENZ E-Klasse

E 300 de T 9G-TRONIC

VIN NO W1K2132161B098413
Registration Number 161B098413



MOT Date

2025-08-01

Last Service



Number of Owners

1

Last Service Mileage



Number of Keys

2

First Registration Date

2022-08-10

Odometer Reading

97807 km

Country First Registered

Germany

Inspection Report Summary

Customer	BCA Online	Report Number	P20250910084706
Inspection Date / Place	2025-09-10 / BCA Neuss	Cosmetic Grade	4

Vehicle Summary

Vehicle Condition	Runner	VAT Type	Qualifying
Fuel Type	Plug - in Hybrid Electric Vehicle Diesel	Gearbox Type	Automatic
Colour	Black	Engine Size (cc)	1950
Engine Size	2.0	No of Doors	5
Body Type	Stationwagon / Estate	Drive Train	Rear
Seat Colour		No of Seats	5
Seat Covering Name	Schwarz	Seat Covering	Cloth/Synthetic Leather
Charging Cables	OUC + Type 2	WLTP CO2 Emissions	

Vehicle History & Documents

Service Book Available	Missing	Next Service Mileage	km
Previous Usage		Imported	No
Manufacturer Warrenty			









Equipment

Tinted Glass	Airbag Status	Ambientlighting	Bluetooth telephone interface
Diesel particulate filter	Front parking sensors	Remote central locking	Roof rails
Stability control	Electrically folding wing mirrors	Leather steering wheel	Radio
USB Socket	Alloys wheels	Anti-lock braking	Cruise control
Enhanced speaker system	Remote adjusting wing mirrors	Reversing Camera	Satellite navigation
Electrically adjustable seats	Electrictailgate	LED Headlamps	Rear parking sensors

Equipment Details

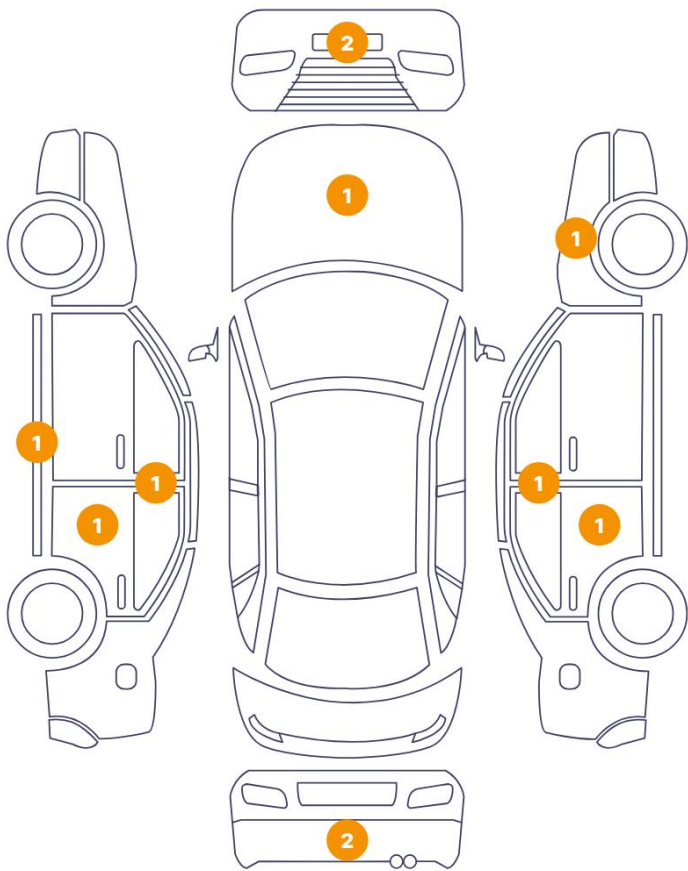
Air Conditioning	Dual Zone Climate Control	Alloy Wheel Size	18
Extra Wheel / Tyre Set	Winter Tyres - Alloy	Seat Heating	Front

Wheels & Tyres

Right Front Tyre Depth	5	Left Front Tyre Depth	5
Right Rear Tyre Depth	5	Left Rear Tyre Depth	5
Extra Wheel - 1 Tyre Depth	6	Extra Wheel - 2 Tyre Depth	6
Extra Wheel - 3 Tyre Depth	4	Extra Wheel - 4 Tyre Depth	4

Cosmetic Damage

11 Schäden



0 Schäden



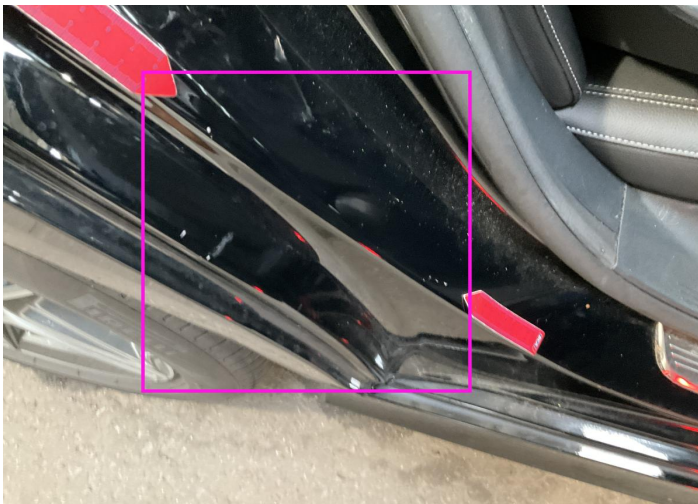
Component		Damage	Comments
1	Rocker Panel / Center Left	Bodywork / Dent / Dent	
2	B Pillar / Center Left	Bodywork / Dent / Dent	
3	Pillar / Back Right	Paint / Scratch / Scuff	
4	B Pillar / Center Right	Bodywork / Dent / Dent	
5	Hood	Paint / Poor Previous Repair	
6	Door / Back Left	Paint / Poor Previous Repair	
7	Fender / Front Right	Paint / Poor Previous Repair	
8	Corner Bumper / Front Right	Paint / Scratch / Scuff	
9	Corner Bumper / Front Left	Paint / Scratch / Scuff	
10	Corner Bumper / Back Left	Paint / Scratch / Scuff	
11	Bumper / Back	Bodywork / Dent / Dent	



1. Rocker Panel / Center Left
Bodywork / Dent / Dent -



2. B Pillar / Center Left
Bodywork / Dent / Dent -



3. Pillar / Back Right
Paint / Scratch / Scuff -



4. B Pillar / Center Right
Bodywork / Dent / Dent -



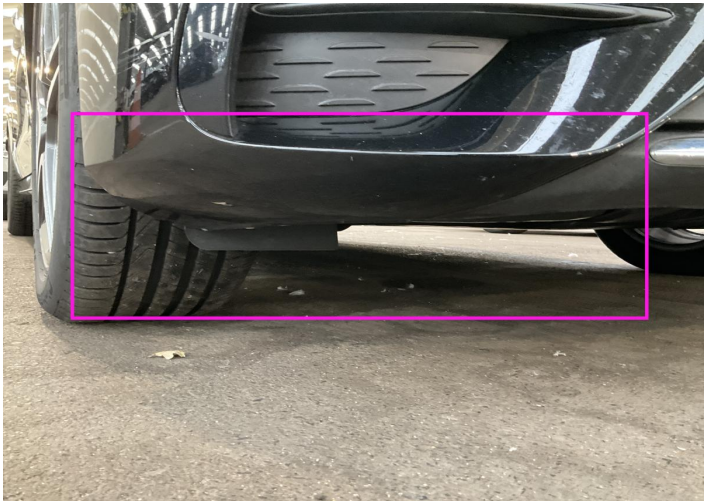
5. Hood
Paint / Poor Previous Repair -



6. Door / Back Left
Paint / Poor Previous Repair -



7. Fender / Front Right
Paint / Poor Previous Repair -



8. Corner Bumper / Front Right
Paint / Scratch / Scuff -



9. Corner Bumper / Front Left
Paint / Scratch / Scuff -



10. Corner Bumper / Back Left
Paint / Scratch / Scuff -



11. Bumper / Back
Bodywork / Dent / Dent -

Mechanical Condition

Control Lights

Display Defect	✓	ABS Warning Light	✓
ESP Fault/Traction Control Malfunction Light	✓	Diesel Particulate Filter Light	✓
Airbag Warning Light	✓	Oil Pressure Warning Light	✓
Brake Warning Light	✓	Power Steering Warning Light	✓
Alternator / Battery	✓	No Dashboard Lights	✓
Tire Pressure Monitoring System	✓		

Equipments Test

Main & Spare Keys Functioning	✓	Electric Windows	✓
Navigation System	✓	Audio Equipment	✓
Parking Sensors / Cameras Functioning	✓	AC / Heating System	✓

Engine

Engine Status / EML	✓	Engine Leak Visible	✓
Engine Starts	✓		

Gearbox

Gear Box	✓
----------	---

Hybrid/EV

Charge Lead Condition	✓	Charge Port Condition	✓
Hybrid System Fault	✓		

Levels

Brakes Fluid	NA	Coolant Fluid	✓
--------------	----	---------------	---

Test Drive Inspection

Steering Wheel			
Steering Noise / Anomaly		✓	
Engine			
Engine Noise	✓	The Gears Scratch / Skip / Abnormal Operation	✓
Fume Quantity	✓	Power Loss	✓
Brake			
Brake System Anomaly		✓	
General			
Test Driven Status		✓	
✓ <i>No troubles detected, good condition or correct tests, according to vehicle age and mileage</i>			
! <i>Damages or malfunction detected that requires repairs by the buyer</i>			
NA <i>Not applicable</i>			
= <i>Not tested</i>			

Disclaimer

Please also note the "UserGuide condition report", which shows the scope of the vehicle description.

[User Guide](#)