



Expertise

Protocol number: 41617161
Order No. / Reference: 25121080
Inspection date: 19 Sept 2025

Manufacturer: Mercedes-Benz

Model: E 300 de T 9G-TRONIC AMG Line

VIN: W1K2132161A907785



| Vehicle details | |
|---|------------------------------|
| Manufacturer / Type / Model / Equipment | |
| Mercedes-Benz E 300 de T 9G-TRONIC AMG Line | |
| Vehicle Identification number | W1K2132161A907785 |
| Mileage (Read) | 74,160 km |
| First registration | 14 Dec 2020 |
| Number of holders | 1 |
| Power / Engine displacement | 143 kw / 1,950 ccm |
| Fuel type / Cylinder | Hybr.D/E ext. edition / 4 |
| Gearbox / Number of gears | Automatic / 9 |
| Type of drive | Rear drive |
| Type of vehicle | Station wagon |
| Colour / colour code | SELENITGRAU - METALLKLACK |
| Doors / Seats | 5 / 5 |
| Upholstery type | Leather |
| Colour of upholstery | Black |



Vehicle details

| | | | |
|--|------------------------------|--------------------------------|---|
| Maintenance booklet / proof | digital proof / complete | Next maintenance in | 151 Tag(e) |
| Last maintenance on / at | 02/2025 at 71,565 km | | |
| Key is / should be | 2 / 2 | FZG documents | ZB#2 (B) was available (copy), ZB#1 (S) was not available |
| | | Letter No. | FX706586 |
| Previous damage / Accident | Detectable | Repainting | Detectable |
| Inspection conditions | sufficient | Lifting equipment / pit | yes |
| Test drive | Not performed | Engine function test | Performed |
| Manufacturer key number/ type code number | 2222 / AEN 00018 | | |
| Emission standard | EURO6;WLTP;AP;PI/CI; M, N1 I | Fine dust sticker | |
| Permitted total weight | 2,820 kg | Empty weight | |

Tyres

Mounted tyres

| # | Tyre size | Type of tyre | Manufacturer | Tread depth |
|----|-----------------|-----------------------------|--------------|-------------|
| 1) | 245/45 R18 100V | Winter tyres on Light alloy | Continental | 7mm / 7mm |
| 2) | 275/40 R18 103V | Winter tyres on Light alloy | Continental | 7mm / 7mm |

Additional tyres

| # | Tyre size | Type of tyre | Manufacturer | Tread depth |
|----|-----------------|-----------------------------|--------------|-------------|
| 1) | 245/45 R18 100Y | Summer tyres on Light alloy | Pirelli | 5mm / 5mm |
| 2) | 275/40 R18 103Y | Summer tyres on Light alloy | Pirelli | 4mm / 4mm |

Legend: Tread depth information for tires on the left is in the first place, for tires on the right is in the second place on the axle in the direction of travel



Equipment

Standard equipment

- ADAPTIVE BRAKE with hill start assist, pre-filling and dry braking in wet conditions
- Airbag: Automatic passenger airbag deactivation
- Airbag: Sidebag for driver and front passenger
- Acoustic environmental protection
- AMG floor mats in black with AMG lettering
- Anti-lock braking system (ABS)
- Traction control (ASR)
- ATTENTION ASSIST
- Basic services
- On-board computer
- Brake system with larger brake discs on the front axle
- tachometer
- DYNAMIC SELECT
- EASY-PACK tailgate
- Electronic Stability Program (ESP)
- Chassis: Air suspension on the rear axle with level control
- Electric window lifter with comfort operation and anti-pinch protection, 4-way
- Rear window wiper
- Instrument panel and door edges in ARTICO man-made leather
- THERMATIC automatic climate control
- 5-way headrests for driver and front passenger 4-way adjustable and 2-way in the rear
- Charging system: Alternating current charging system (AC charging) 7.4 kW
- Steering column mechanically adjustable in height and length
- Center console with spontaneous storage
- Navigation: Hard drive navigation
- Package: Storage (for plug-in hybrid)
- Package: Seat comfort
- Radio: Advanced functions MBUX
- Radio accessories: Digital radio
- Remote Services Plus
- Power steering
- Seats: Rear seat backrests foldable 40/20/40 split
- Socket: 12 V socket in the cargo area
- High-visibility vest for drivers
- Heat-insulating glass green all around
- Decorative elements made of aluminum with light longitudinal grain
- AdBlue tank with 23.5 l capacity
- Airbag for driver and front passenger
- Airbag: Kneebag for driver
- Airbag: Windowbags left/right
- Premium ambient lighting with 64 colors and 3 color zones
- AMG sports pedal system made of brushed stainless steel with rubber studs
- Armrest for driver and passenger foldable
- Exterior mirrors left and right, heated and electrically adjustable, painted in body color
- Brake Assist, active
- diesel particulate filter
- Third brake light
- EASY-PACK load compartment cover including EASY-PACK safety net
- Chassis: AGILITY CONTROL chassis with selective damping system
- Transmission: Automatic 9-speed, 9G-TRONIC
- Heated rear window with timer control
- Interior headliner fabric black
- KEYLESS START
- Climate: Pre-conditioning
- Communication module (LTE) for the use of Mercedes me connect services
- Charging cable for household socket, 5m, smooth
- Steering wheel: Multifunction sports steering wheel in black nappa leather
- Mercedes-Benz emergency call system
- Center console piano lacquer look black
- Navigation accessories: Pre-installation for Live Traffic Information
- Package: AMG Line Exterior
- PRE-SAFE system
- Radio: MBUX multimedia system
- Tire pressure monitoring
- Windscreen wipers with rain sensor
- Seats: i-Size child seat attachment
- Seats: Sports seats front
- Touchpad
- Electronic immobilizer
- Central locking

Extra equipment

- Airbag: Sidebags in the rear left and right
- Paint finish: metallic
- Trailer hitch with ESP trailer stabilization (fully electrically foldable and extendable)



- MULTIBEAM LED (84 individually controllable high-performance LEDs, low beam and high beam with LED projection technology, Adaptive High Beam Assist Plus (glare-free permanent high beam), ULTRA RANGE high beam, cornering light or cornering light with roundabout and intersection function, active cornering light (with predictive control with active lane keeping assist or driver assistance packages), extended fog light, city light, country road light, motorway light and bad weather light, adaptive full-LED rear lights)
- Package: Mirrors (both exterior mirrors electrically foldable (button in the driver's door control panel) - automatic lowering of the passenger mirror glass to the parking position when reverse gear is engaged - interior mirror and exterior mirror on the driver's side automatically dimmable - ambient lighting of the exterior mirror to illuminate the entry area)
- Seats: Seat heating in the rear (passengers in the two outer rear seats can choose between three levels at the touch of a button - the heating switches back and off automatically.)
- Carrier for roof attachments (Expand your transport options. You can combine the basic carrier with a variety of Mercedes-Benz roof attachments – such as roof boxes, bicycle racks, or ski racks. It is precisely tailored to the body and offers the best possible safety and aerodynamics.)
- Package: Business (MBUX High-End Package - Connectivity Package Navigation - Traffic Sign Assistant - Smartphone Integration - Car Sharing Preparation - Widescreen Cockpit - Wireless Charging System for Mobile Devices - MBUX Augmented Reality for Navigation - Seat Heating for Driver and Front Passenger - Parking Package with Rearview Camera - Fuel Tank with 66 Liter Capacity (916) (60l for Diesel Plug-in Hybrids).)
- Package: Parking Package with Rearview Camera (The Parking Package with rearview camera makes it easier to find and select a parking space, as well as to park in and out of parallel and perpendicular parking spaces or garages. The Active Parking Assistant assists the vehicle into parking spaces, including cruise control and automatic gear shifting.)
- Upholstery: Nappa leather
- Seats: Seat heating for driver and front passenger (selectable in three levels - Intelligent and comfortable: The seat heating switches back automatically)
- Power socket: 2 USB ports in the rear with charging function
- Glazing: Heat-insulating, dark-tinted glass all around from the B-pillar (the rear side windows and rear window are made of heat-insulating, dark-tinted glass, protecting rear passengers from prying eyes and direct sunlight – the dark tint also underlines the vehicle's sportiness)

Brief expert findings

| | |
|----------------------|--|
| Documents submitted | At the time of the inspection, the registration certificate Part 2 (letter) was available, but the registration certificate Part 1 (certificate) was not. (Copy) |
| VIN comparison | The vehicle identification number (VIN) was read from the vehicle and its conformity with the submitted documents was verified during the inspection by the undersigned. |
| Inspection | The inspection conditions were sufficient for the assessment of the vehicle. Lifting equipment and a pit were available for examining the vehicle. |
| Test drive | No test drive/maneuvering was carried out during the inspection of the vehicle. |
| Engine function test | An engine test run was performed. |

Value reducing factors

| No. | Component group | Description |
|-----|----------------------|--|
| 1 | Interior | Interior (Tierhaare) - Soiled - Clean |
| 2 | Interior | Interior - Odour - Ozone treatment |
| 3 | Boot lid / rear door | Boot lid - Scratch(es) - Smart repair |
| 4 | 2nd wheel set | 1 alloy rim - Scratch(es) - Loss in value |
| 5 | Vehicle glazing | Windscreen (Innen) - Scratch(es) - Replace |



Wear and tear

| No. | Component group | Description |
|-----|-------------------------|--|
| 1 | Door - front right side | Door edge - Scratch(es) - No deduction |
| 2 | Roof | Roof - Stone chips - No deduction |
| 3 | Wheel / tyres | Wheelset - complete - Scratch(es) - No deduction |
| 4 | Rear bumper | Rear bumper - Scratch(es) - No deduction |
| 5 | Door - front left side | Door edge - Scratch(es) - No deduction |

The vehicle shows signs of wear commensurate with its age and use.

Missing parts

Description

Equipment - Roof rack system

Previous damages

| No. | Previous damage | Extent of damage (Net) |
|-----|--|------------------------|
| 1 | Rear, Side - left, Provided by user / customer, from 23 Jan 2024 | 6.061,35 € |
| 2 | Front, Provided by user / customer, from 2 Apr 2025 | 20.748,47 € |

Repainting

No. Repainting

| | |
|---|--|
| 1 | Roof rail - left side, Mudguard - left side, Bonnet, Side panel - rear left side, Door - rear left side, Door - front left side, Professionally carried out, Invoice of repair done Non-existent |
|---|--|

Paint coat thickness measurement

| | | | |
|-----------------------|--------|-----------------------------|--------|
| Roof rail - left side | 176 µm | Mudguard - left side | 192 µm |
| Bonnet | 275 µm | Side panel - rear left side | 218 µm |
| Door - rear left side | 224 µm | Door - front left side | 197 µm |

Order/Scope of order

The order was placed to prepare a sales report for the vehicle described. This includes the following:

- Description of core relevant information about the vehicle
- Documentation of equipment features
(Delivery by third-party service providers)
- Documentation of damage, defects, missing parts
- Documentation of previous damage, unrepaired previous damage, repainting
- a brief visual or functional inspection of the equipment details if possible.
(Functional tests of driver assistance systems are not included in the scope of services!)
- a photo documentation of the vehicle



Basis for the order

This product is based on the Alphabet Fuhrpark GmbH guidelines for vehicle returns and valuations. The expert makes the explicit findings in each individual case objectively within the framework of the specified standards based on his or her own expertise.

The vehicle inspection takes place in a disassembled state.

Damage or defects that can only be detected during disassembly/diagnosis work or through advanced knowledge remain within the scope of the prognosis risk. An extended risk exists for concealed defects caused by fraudulent deception and not identifiable by the expert.

Damage or defects resulting from normal use or wear and tear of the vehicle will be accepted according to the applicable standard.

There was no explicit identification or monetary consideration of the expected features within the product.

Features which in their nature and severity slightly exceed normal use but do not constitute unacceptable damage will be documented and identified under signs of use if necessary.

Damage or defects which, according to the underlying standard, can no longer be attributed to normal use or wear and tear are listed in the product under "Depreciating Factors".

Depending on the product specification, a monetary ID can be provided. If this takes place, the costs can be 100% d or pro rata depending on the vehicle's age and mileage.

Previous damages

According to available information previous damages were repaired at the vehicle. Traces of repairs, which allow conclusions about the area of repair, were not recognizable during the inspection.

Comments

- Winterradsatz ist kein Bestandteil des Auslieferumfangs



Figure 1: Diagonal front (left)



Figure 2: Diagonal front (right)



Figure 3: Diagonal rear (left)



Figure 4: Diagonal rear (right)



Figure 5: Interior - front



Figure 6: Interior - rear



Figure 7: Instrument cluster



Figure 8: Instrument panel



Figure 9: Interior 360° view



Figure 10: Cargo area



Figure 11: VIN



Figure 12: Mounted tyres



Figure 13: Documents

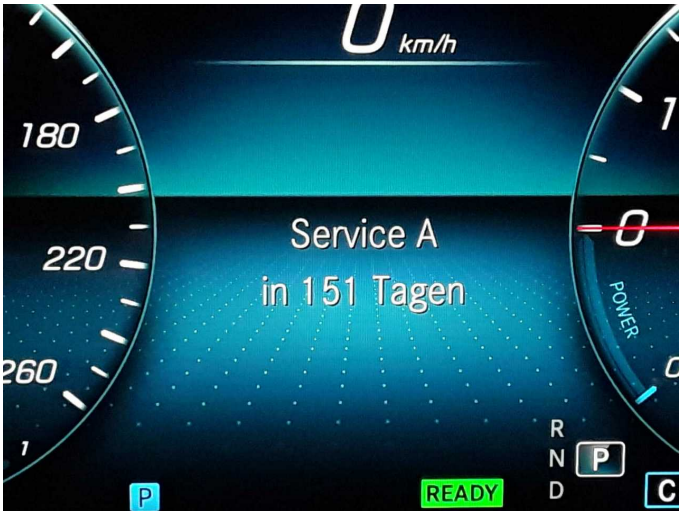


Figure 14: Documents



Figure 15: Documents



Figure 16: Additional tyres



Figure 17: Navigation



Figure 18: Misc.



Figure 19: Misc.



Figure 20: Misc.



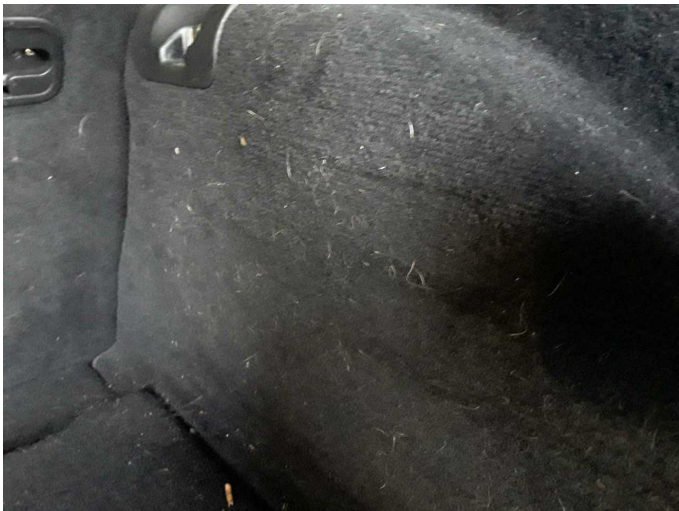
Figure 21: Misc.



Figure 22: Misc.



Damage 1: Interior: Interior (Tierhaare) - Soiled - Clean



Damage 1: Interior: Interior (Tierhaare) - Soiled - Clean



Damage 3: Boot lid / rear door: Boot lid - Scratch(es) - Smart repair



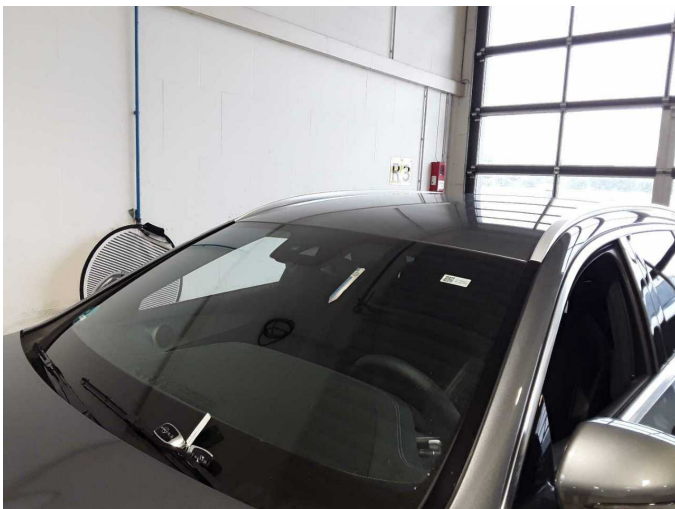
Damage 3: Boot lid / rear door: Boot lid - Scratch(es) - Smart repair



Damage 4: 2nd wheel set: 1 alloy rim - Scratch(es) - Loss in value



Damage 4: 2nd wheel set: 1 alloy rim - Scratch(es) - Loss in value



Damage 5: Vehicle glazing: Windscreen (Innen) - Scratch(es) - Replace



Damage 5: Vehicle glazing: Windscreen (Innen) - Scratch(es) - Replace



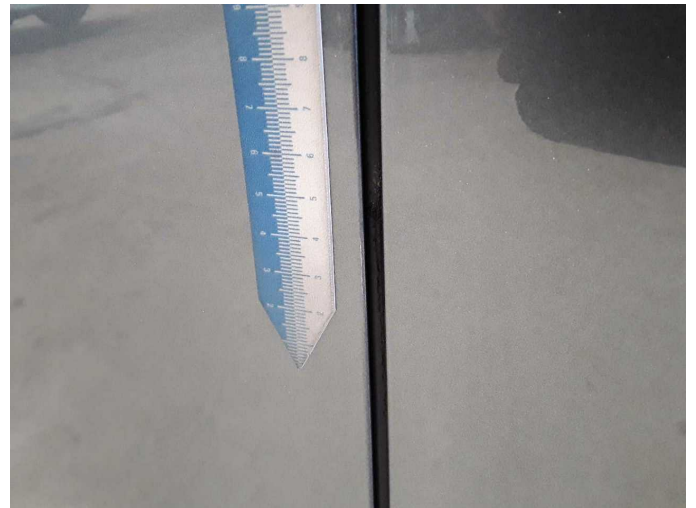
Wear and tear 4: Rear bumper: Rear bumper - Scratch(es) - No deduction



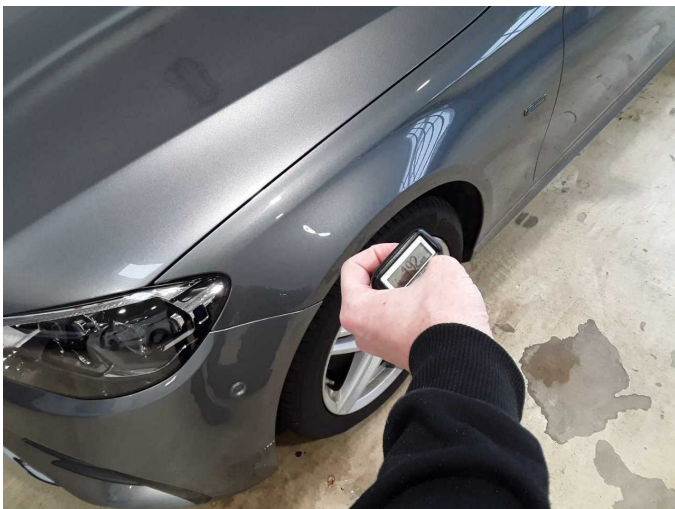
Wear and tear 4: Rear bumper: Rear bumper - Scratch(es) - No deduction



Wear and tear 5: Door - front left side: Door edge - Scratch(es) - No deduction



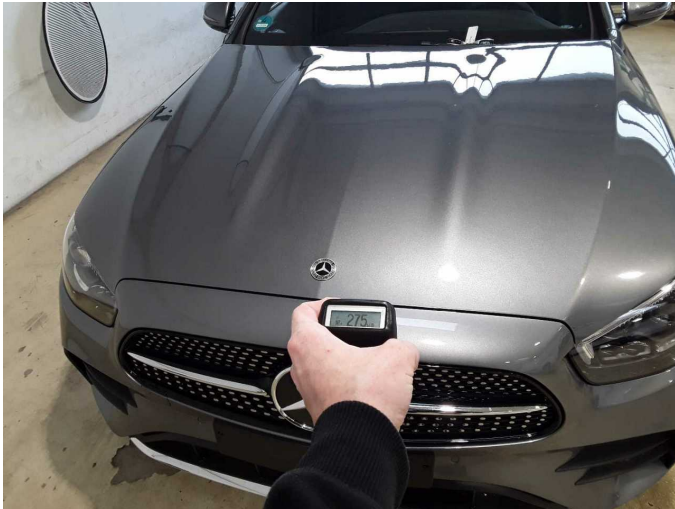
Wear and tear 5: Door - front left side: Door edge - Scratch(es) - No deduction



Repainting 1: Roof rail - left side, Mudguard - left side, Bonnet, Side panel - rear left side, Door - rear left side, Door - front left side



Repainting 1: Roof rail - left side, Mudguard - left side, Bonnet, Side panel - rear left side, Door - rear left side, Door - front left side



Repainting 1: Roof rail - left side, Mudguard - left side, Bonnet, Side panel - rear left side, Door - rear left side, Door - front left side



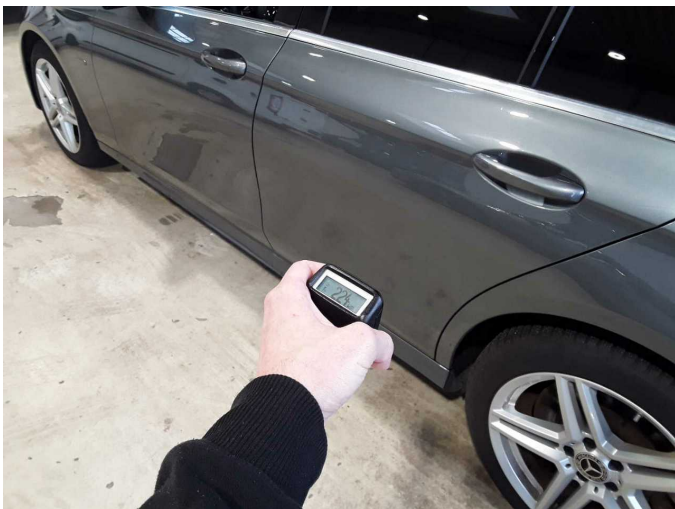
Repainting 1: Roof rail - left side, Mudguard - left side, Bonnet, Side panel - rear left side, Door - rear left side, Door - front left side



Repainting 1: Roof rail - left side, Mudguard - left side, Bonnet, Side panel - rear left side, Door - rear left side, Door - front left side



Repainting 1: Roof rail - left side, Mudguard - left side, Bonnet, Side panel - rear left side, Door - rear left side, Door - front left side



Repainting 1: Roof rail - left side, Mudguard - left side, Bonnet, Side panel - rear left side, Door - rear left side, Door - front left side



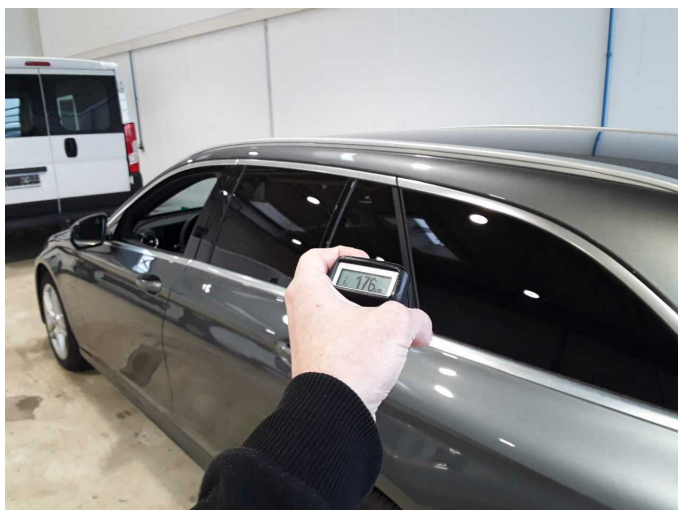
Repainting 1: Roof rail - left side, Mudguard - left side, Bonnet, Side panel - rear left side, Door - rear left side, Door - front left side



Repainting 1: Roof rail - left side, Mudguard - left side, Bonnet, Side panel - rear left side, Door - rear left side, Door - front left side



Repainting 1: Roof rail - left side, Mudguard - left side, Bonnet, Side panel - rear left side, Door - rear left side, Door - front left side



Repainting 1: Roof rail - left side, Mudguard - left side, Bonnet, Side panel - rear left side, Door - rear left side, Door - front left side



Repainting 1: Roof rail - left side, Mudguard - left side, Bonnet, Side panel - rear left side, Door - rear left side, Door - front left side



Wartungshistorie

(gemäß Auftraggeber Informationen)

Fahrgestellnummer: W1K2132161A907785

Hersteller / Modell: MERCEDES-BENZ MB E 300 de T 9G-TRONIC AMG Line

| Datum | KM-Stand | Beschreibung |
|------------|----------|---------------------|
| 17.02.2025 | 71.565 | Regelwartungsdienst |
| 26.01.2024 | 54.334 | HU + AU |
| 23.01.2024 | 54.334 | Regelwartungsdienst |
| 12.01.2023 | 34.840 | Regelwartungsdienst |
| 02.12.2021 | 15.094 | Kleine Inspektion |