



Expertise

Protocol number: 41287752
Order No. / Reference: 24968977
Inspection date: 28 Aug 2025

Manufacturer: Mercedes-Benz
VIN: W1K2132161A857007

Model: E 300 de T 9G-TRONIC Avantgarde



Vehicle details	
Manufacturer / Type / Model / Equipment	
Mercedes-Benz E 300 de T 9G-TRONIC Avantgarde	
Vehicle Identification number	W1K2132161A857007
Mileage (Read)	100,325 km
First registration	21 Jul 2020
Number of holders	1
Next periodical technical inspection	08/2025
(Report on hand)	
Power / Engine displacement	143 kw / 1,950 ccm
Fuel type / Cylinder	Hybr.D/E ext. edition / 4
Gearbox / Number of gears	Automatic / 9
Type of drive	Rear drive
Type of vehicle	Station wagon
Colour / colour code	POLARWEISS
Doors / Seats	5 / 5
Upholstery type	Cloth / leather combination
Colour of upholstery	Black-Grey
Vehicle with smoke odor	no



Vehicle details

Maintenance booklet / proof	digital proof / complete	Next maintenance in	302 Tag(e)
Last maintenance on / at	06/2025 at 100,190 km		
Key is / should be	2 / 2	FZG documents	ZB#2 (B) was available (copy), ZB#1 (S) was not available
		Letter No.	FT797362
Previous damage / Accident	Detectable	Repainting	Detectable
Inspection conditions	sufficient	Lifting equipment / pit	yes
Test drive	Not performed	Engine function test	Performed
Manufacturer key number/ type code number	2222 / AEN 00001		
Emission standard	EURO6;WLTP;DG;PI/CI; M, N1 I	Fine dust sticker	
Permitted total weight	2,800 kg	Empty weight	

Tyres

Mounted tyres

#	Tyre size	Type of tyre	Manufacturer	Tread depth
1)	245/45 R18 100V	Winter tyres on Light alloy	Pirelli	7mm / 7mm
2)	275/40 R18 103V	Winter tyres on Light alloy	Pirelli	7mm / 7mm

Additional tyres

#	Tyre size	Type of tyre	Manufacturer	Tread depth
1)	245/45 R18 100Y	Summer tyres on Light alloy	Pirelli	5mm / 5mm
2)	275/40 R18 103Y	Summer tyres on Light alloy	Pirelli	7mm / 7mm

Legend: Tread depth information for tires on the left is in the first place, for tires on the right is in the second place on the axle in the direction of travel

Equipment

Standard equipment

- ADAPTIVE BRAKE with hill start assist, pre-filling and dry braking in wet conditions
- Airbag: Automatic passenger airbag deactivation (The system automatically deactivates the passenger airbag as soon as it detects a rear-facing child seat or registers that the passenger seat is unoccupied. A transponder in the child seat is not necessary. If it is detected that an adult is sitting down, the airbag is automatically activated and the risk of incorrect operation is reduced.)
- Analog clock on the center console
- Anti-lock braking system (ABS)
- Armrest for driver and passenger foldable
- Left and right exterior mirrors, heated and electrically adjustable, painted in body color (with aspherically curved mirror glass and integrated LED indicator light)
- Basic services (breakdown management, maintenance management, accident management, telediagnosis, remote vehicle diagnosis)
- diesel particulate filter
- tachometer
- Third brake light
- EASY-PACK load compartment cover including EASY-PACK safety net
- EASY-PACK tailgate (For convenient loading and unloading, the EASY-PACK tailgate opens and closes electromechanically at the touch of a button. To prevent the tailgate from colliding, it can be stopped in any position and its opening angle can be limited.)
- Electronic Stability Program (ESP) (with traction control (ASR))
- Chassis: Air suspension on the rear axle with level control
- Vehicle setup (remote door locking and unlocking, remote vehicle status query, auxiliary heating programming - if installed. Door-to-door navigation is also possible in conjunction with navigation.)
- Electric window lifter with comfort operation and anti-pinch protection, 4-way
- Rear lights with LED technology
- Heated rear window with timer control
- Interior headliner in crystal grey fabric
- Climate: Pre-conditioning
- Communication module (LTE) for the use of Mercedes me connect services (preparation for the use of Mercedes me connect services with particularly fast and reliable data transfer. The LTE communication module, with a permanently installed SIM card that transfers data particularly quickly and reliably, creates the technical prerequisite for using the Mercedes me connect services, some of which must be booked separately from Daimler AG.)
- AdBlue container with 25 l volume
- Airbag for driver and front passenger
- Airbag: Kneebag for driver
- Airbag: Sidebag for driver and front passenger (combined thorax/pelvis bag)
- Airbag: Windowbags left/right
- Ambient lighting with 64 light colors (footwell lighting in the rear)
- AMG sports pedal system made of brushed stainless steel with rubber studs
- Traction control (ASR)
- ATTENTION ASSIST (the attention assistant) (can detect typical signs of fatigue through driver behavior and warn the driver of increasing fatigue or inattention)
- Exterior mirror housing with integrated ambient lighting
- Active Brake Assist (This system can help prevent or mitigate accidents with vehicles ahead and pedestrians crossing the road. It includes a distance and collision warning, situation-appropriate braking assistance, and an autonomous braking function.)
- DYNAMIC SELECT (for selecting one of the five driving programs. Comfortable, sporty, extra sporty, efficient, or completely individual driving behavior can be called up with DYNAMIC SELECT at the touch of a finger. Parameters such as the characteristics of the engine, transmission, ESP, and steering are adjusted depending on the selected driving program.)
- ECO start-stop function
- Chassis: AGILITY CONTROL chassis with selective damping system (This chassis with a selective passive damping system ensures balanced ride comfort by optimizing rolling behavior, damping effect, and stabilization according to the road surface.)
- Vehicle key in high-gloss black with decorative frame in matt chrome (The vehicle has an elegant electronic key - KEYLESS-START - for opening and locking)
- Transmission: Automatic 9-speed, 9G-TRONIC (including DIRECT SELECT selector lever and DIRECT SELECT steering wheel shift paddles)
- KEYLESS START
- THERMATIC automatic climate control (with 2 climate zones - separate temperature control for driver and front passenger - fine dust activated carbon filter for dust and odor reduction - air recirculation with comfort function - sun and mist sensor - rear compartment ventilation vents)
- 5-way headrests for driver and front passenger 4-way adjustable and 2-way in the rear
- Paint finish: Uni



- LED High Performance headlights (with integrated daytime running lights. In addition to their striking appearance, the LED High Performance headlights offer greater safety at night thanks to their wide light distribution, daylight-like light color, and low energy consumption.)
- Steering column mechanically adjustable in height and length
- Center console piano lacquer look black
- Package: AVANTGARDE Exterior (dynamic front bumper with chrome trim element, radiator grille with integrated Mercedes star and 2 slats in matt iridium silver with chrome inserts, 45.7 cm (18") light alloy wheels in 5-spoke design, black lacquered and glossy, with front axle 245/45 R 18 on 8 J x 18 ET 43, rear axle 275/40 R 18 on 9 J x 18 ET 52.5, side skirts painted in body color, beltline trim strip and window surround in polished aluminum, rear bumper with insert in diffuser look, roof rails in polished aluminum.)
- Upholstery: ARTICO man-made leather/Norwich fabric
- PRE-SAFE system (The system can detect critical driving situations in advance and initiate preventive measures to protect the occupants if an accident is imminent. In addition to reversible seat belt tensioning and other measures, the new system also includes PRE-SAFE Sound.)
- Tire pressure control (continuously monitors the inflation pressure of all four tires)
- Trip computer and on-board computer (with current consumption display)
- Windshield wipers with rain sensor (with 2 sensitivity levels – the electronically controlled rain sensor makes driving more relaxing in adverse weather conditions – the system detects whether the windshield is wet and, when interval wiping is activated, automatically adjusts the wiper frequency to the appropriate level of precipitation)
- Seats: Rear seat backrests foldable 40/20/40 split (including EASY-PACK Quickfold and center armrest with double cup holder and storage compartment, electric release)
- Seats: Sports seats in the front (with horizontal stitching on the seat surfaces)
- Power socket: 12 V socket in the cargo area (for connecting a notebook, MP3 player, mobile phone, cooler, and other electrical devices.)
- Electronic immobilizer (including locking system with 3-channel radio remote control in the electronic key in chrome look, optical locking feedback and emergency opening (recognized by AZT and TÜV))
- Charging cable for household socket, 4 m, coiled, single-phase, TYPE E/F CEE 7/7 (The 4-meter-long, coiled charging cable enables charging of the battery at a household socket (230 V, single-phase) with up to 3 kW.)
- Steering wheel: Multifunctional sports steering wheel in nappa leather (3-spoke design, deeply embossed in the middle grip area, with touch control buttons and steering wheel shift paddles)
- Mercedes-Benz Emergency Call System (In the event of an accident, the Mercedes-Benz Emergency Call System can significantly shorten the time it takes for emergency services to arrive at the scene. Data is transmitted via a communications module with its own SIM card. No mobile phone is required.)
- Package: Seat Comfort (various electric and manual adjustment options for the front seats to adapt to the specific body and comfort requirements of the driver and front passenger - electro-pneumatic 4-way lumbar support with seat control - electric seat cushion tilt adjustment - electric height adjustment - electric backrest adjustment - mechanical seat cushion depth adjustment by 6 cm with leg rest pad - mechanical fore/aft adjustment - mechanical headrest adjustment)
- Radio: Audio 20 (online-capable multimedia system with Media Display (21.3 cm (8.4")), on-board controls, multifunction steering wheel, touch control buttons on the steering wheel and LINGUATRONIC voice control system, Bluetooth hands-free system, Dual Phone Mode, communication module for Mercedes me services, Mercedes me connect basic services, Mercedes-Benz apps, Mercedes-Benz emergency call system, SD interface, 2 USB ports, Bluetooth interface, Car-to-X communication.)
- Service interval display ASSYST
- Power steering
- Seats: i-Size child seat anchorage (on the outer rear seats - This system allows for quick and secure attachment of i-Size and ISOFIX child seats in the rear for the best possible protection of the child in the event of an accident. Top Tether anchorage points provide additional safety by anchoring the child seat behind the rear headrests.)
- Seats: Front seats electrically adjustable (electric adjustment for seat height and backrest angle - mechanical for longitudinal adjustment and headrests)
- Cruise control (with variable speed limiter SPEEDTRONIC)
- High-visibility vest for drivers
- Green heat-insulating glass all around (including rear window made of toughened safety glass)
- Central locking
- Decorative elements made of aluminum with trapezoidal cut

Extra equipment



- Trailer hitch with ESP trailer stabilization (When not needed, the trailer hitch can be electrically swiveled behind the rear bumper. To attach a car trailer or mount a bicycle rack, it is electrically swiveled out again and automatically locked in the operating position.)
- Charging cable for household socket, 8 m, smooth, 1-phase, TYPE E/F CEE 7/7 (The 8-meter-long, smooth charging cable enables charging the battery at a household socket (230 V, 1-phase) with up to 3 kW.)
- Package: Business (66l fuel tank (60l for 300 de) - SD card navigation: expands the Audio 20 GPS to an online-capable multimedia system with SD card navigation, live traffic information, voice recognition - pre-installation for navigation including live traffic and SDHC card slot - 12.3" media display - smartphone integration (Apple CarPlay and Android Auto) - parking package with rearview camera - heated seats for driver and front passenger)
- Package: KEYLESS-GO package (vehicle key with KEYLESS-GO functionality - KEYLESS-GO access and drive authorization system - start/stop button - convenient opening and closing - door handles with chrome inserts - HANDS-FREE ACCESS - handle recess lighting - remote trunk lid closing - EASY-PACK luggage compartment lid)
- Package: Mirror package (interior and exterior mirrors on the driver's side automatically dim, exterior mirrors on the left and right electrically folding with parking position on the right, and ambient lighting in the exterior mirrors. Both exterior mirrors can be electrically folded in and out at the touch of a button to protect the mirror housing from damage, for example, when parking. For improved perceptual safety, the exterior mirror on the driver's side and the interior mirror automatically dim continuously.)
- Radio accessories: Digital radio (For DAB, DMB, and DAB+ standards. The digital radio offers noise-free, CD-quality sound via DAB (including DAB+ and DMB) and additional program information, such as cover art, weather maps, news, and traffic maps. Three DAB tuners in the background always ensure the best reception quality for the selected station.)
- Seats: Seat heating for driver and front passenger (at the touch of a button, you can individually select between 3 different heating levels for each seat)
- Phone accessories: Wireless charging system for mobile devices (charges mobile phones that support the Qi standard wirelessly on a charging surface; Near Field Communication (NFC) allows for quick connection to the mobile phone. Simply place the phone on the charging surface and charge; no plug connections are required. Mobile devices that support the Qi standard can be charged on the charging surface.)
- Aluminum trim elements with trapezoidal finish in conjunction with designo interior
- Head-up display (The head-up display shows the driver important information without distracting their view from the road. It projects a virtual image measuring approximately 21 x 7 cm into the driver's field of vision, which they perceive as hovering about 2 meters in front of them above the hood.)
- Steering wheel: Multifunction sports steering wheel in nappa leather in conjunction with designo interior (macchiato beige with decorative stitching in a 3-spoke design, deeply embossed in the center grip area, with touch control buttons and steering wheel shift paddles)
- Package: Driving Assistance Package (Active Distance Assist DISTRONIC, Active Steering Assist, Active Brake Assist with Cross-Traffic Function, Evasive Steering Assist, Active Blind Spot Assist, Active Lane Keeping Assist, Active Emergency Stop Assist, PRE-SAFE PLUS in conjunction with COMAND Online: Active Speed Limit Assist; Active Lane Change Assist; Route-Based Speed Adaptation; Automatic restart extended to up to 30 seconds in stop-and-go traffic on motorways (Parking Assist or Parking Package required))
- Package: Parking Package with Rearview Camera (The Parking Package with rearview camera makes it easier to find and select a parking space, as well as to park in and out of parallel and perpendicular parking spaces or garages. The Active Parking Assistant assists the vehicle into parking spaces, including cruise control and automatic gear shifting.)
- Radio navigation: COMAND Online (high-resolution media display with a 31.2 cm (12.3") screen diagonal, online-capable infotainment system, 3D map display and dynamic route guidance, live traffic information, Mercedes-Benz apps, WLAN/Wi-Fi hotspot, Mercedes me connect with navigation services, smartphone integration via Android Auto or Apple CarPlay, media interface, USB and Bluetooth interface, SDHC card slot, LINGUATRONIC voice control system, car-to-X communication and remote vehicle status query)
- Radio accessory: Widescreen Cockpit (extends the 31.2 cm (12.3") media display with a high-resolution 31.2 cm (12.3") instrument display with three selectable display styles under a continuous glass panel. The instrument cluster information can be presented more variably on the Widescreen Cockpit's instrument display. Its high-resolution display, 31.2 cm (12.3") screen diagonal, and three selectable display styles make the presentation of vehicle functions even more tangible.)
- Glazing: Heat-insulating, dark-tinted glass all around from the B-pillar (the rear side windows and rear window are made of heat-insulating, dark-tinted glass, protecting rear passengers from prying eyes and direct sunlight – the dark tint also underlines the vehicle's sportiness)



Brief expert findings

Documents submitted	At the time of the inspection, the registration certificate Part 2 (letter) was available, but the registration certificate Part 1 (certificate) was not. (Copy)
VIN comparison	The vehicle identification number (VIN) was read from the vehicle and its conformity with the submitted documents was verified during the inspection by the undersigned.
Inspection	The inspection conditions were sufficient for the assessment of the vehicle. Lifting equipment and a pit were available for examining the vehicle.
Test drive	No test drive/maneuvering was carried out during the inspection of the vehicle.
Engine function test	An engine test run was performed.

Value reducing factors

No.	Component group	Description
1	Instrument panel	Indicator light (Reifen Druck Kontroll System) - on - Perform diagnosis
2	Trim / covers	Door trim - front left side - Damaged - Smart repair
3	Front bumper	Front bumper - Scratched - Smart repair
4	Rear bumper	Rear bumper - Scratched - Loss in value
5	Side panel - rear left side	Side panel - Dent / paintcoat damage - Smart repair
6	Body	Body - Damage by hail - Cost estimate required

Wear and tear

No.	Component group	Description
1	Body	Body - Scratch(es) - No deduction
2	Boot lid / rear door	Boot lid - Scratch(es) - No deduction
3	Wheel / tyres	Alloy rim - front left side - Scratch(es) - No deduction
4	Wheel / tyres	Alloy rim - front right side - Scratch(es) - No deduction

The vehicle shows signs of wear commensurate with its age and use.

Previous damages

No.	Previous damage	Extent of damage (Net)
1	Side - left, Provided by user / customer, from 3 Jul 2023	2.533,22 €
2	Rear, Side - left, Provided by user / customer, from 20 May 2023	2.665,79 €

Repainting

No.	Repainting
1	Roof rail - left side, Mudguard - left side, Side panel - rear left side, Door - rear left side, Professionally carried out, Invoice of repair done Non-existent

Paint coat thickness measurement

Roof rail - left side	209 µm	Mudguard - left side	212 µm
Side panel - rear left side	206 µm	Door - rear left side	192 µm



Order/Scope of order

The order was placed to prepare a sales report for the vehicle described. This includes the following:

- Description of core relevant information about the vehicle
- Documentation of equipment features
(*Delivery by third-party service providers*)
- Documentation of damage, defects, missing parts
- Documentation of previous damage, unrepaired previous damage, repainting
- a brief visual or functional inspection of the equipment details if possible.
(*Functional tests of driver assistance systems are not included in the scope of services!*)
- a photo documentation of the vehicle

Basis for the order

This product is based on the Alphabet Fuhrpark GmbH guidelines for vehicle returns and valuations. The expert makes the explicit findings in each individual case objectively within the framework of the specified standards based on his or her own expertise.

The vehicle inspection takes place in a disassembled state.

Damage or defects that can only be detected during disassembly/diagnosis work or through advanced knowledge remain within the scope of the prognosis risk. An extended risk exists for concealed defects caused by fraudulent deception and not identifiable by the expert.

Damage or defects resulting from normal use or wear and tear of the vehicle will be accepted according to the applicable standard.

There was no explicit identification or monetary consideration of the expected features within the product.

Features which in their nature and severity slightly exceed normal use but do not constitute unacceptable damage will be documented and identified under signs of use if necessary.

Damage or defects which, according to the underlying standard, can no longer be attributed to normal use or wear and tear are listed in the product under "Depreciating Factors".

Depending on the product specification, a monetary ID can be provided. If this takes place, the costs can be 100% d or pro rata depending on the vehicle's age and mileage.

Previous damages

According to available information previous damages were repaired at the vehicle. Traces of repairs, which allow conclusions about the area of repair, were not recognizable during the inspection.

Comments

- Winterradsatz ist kein Bestandteil des Auslieferungsumfangs

Der kalkulierte Hagelschaden wurde nach bestem Wissen und Gewissen unter eingeschränkten Besichtigungsbedingung im demontagefreien Zustand erstellt. Es können aufgrund verdeckter Beschädigung, Mehrkosten und somit Abweichung der für den Schaden ausgewiesenen Reparaturkosten nicht ausgeschlossen werden.



Figure 1: Diagonal front (left)



Figure 2: Diagonal front (right)



Figure 3: Diagonal rear (left)



Figure 4: Diagonal rear (right)



Figure 5: Interior - front



Figure 6: Interior - rear



Figure 7: Instrument cluster



Figure 8: Instrument panel



Figure 9: interior 360° view



Figure 10: Cargo area



Figure 11: VIN



Figure 12: Mounted tyres



Figure 13: Documents



Figure 14: Documents

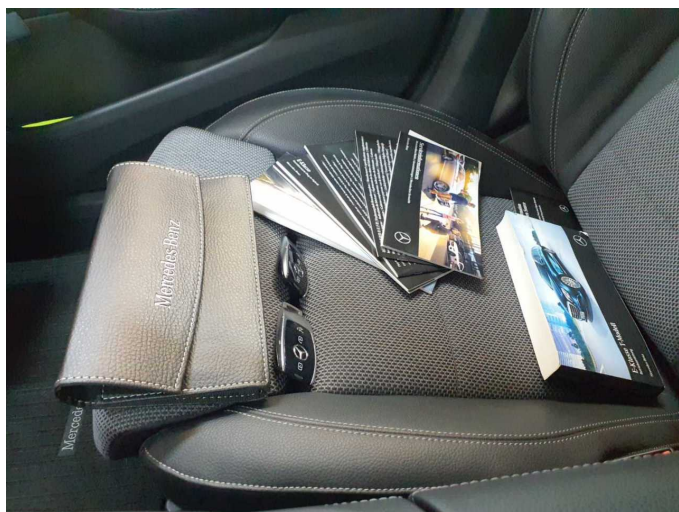


Figure 15: Documents



Figure 16: Additional tyres

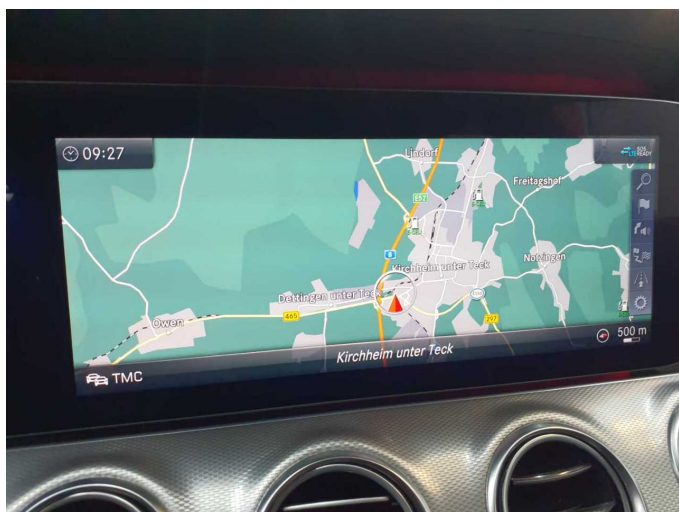


Figure 17: Navigation



Figure 18: Misc.

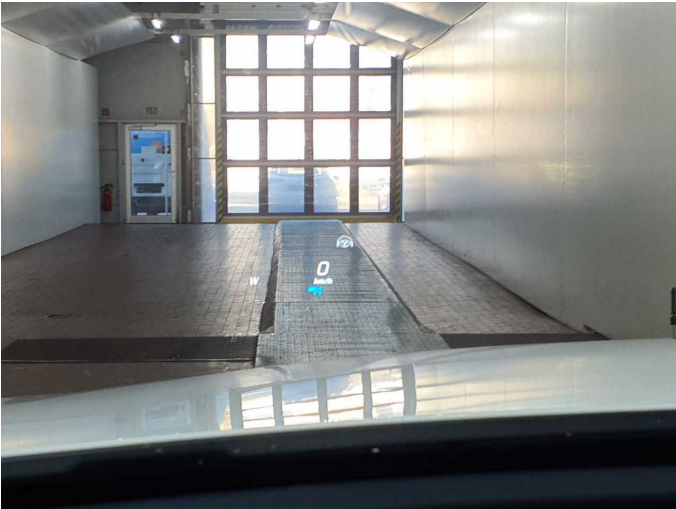


Figure 19: Misc.



Figure 20: Misc.



Figure 21: Misc.



Figure 22: Misc.



Figure 23: Misc.



Figure 24: Misc.



Figure 25: Misc.



Figure 26: Misc.



Figure 27: Misc.



Figure 28: Misc.



Figure 29: Misc.



Figure 30: Misc.



Figure 31: Misc.



Figure 32: Misc.



Figure 33: Misc.



Figure 34: Misc.

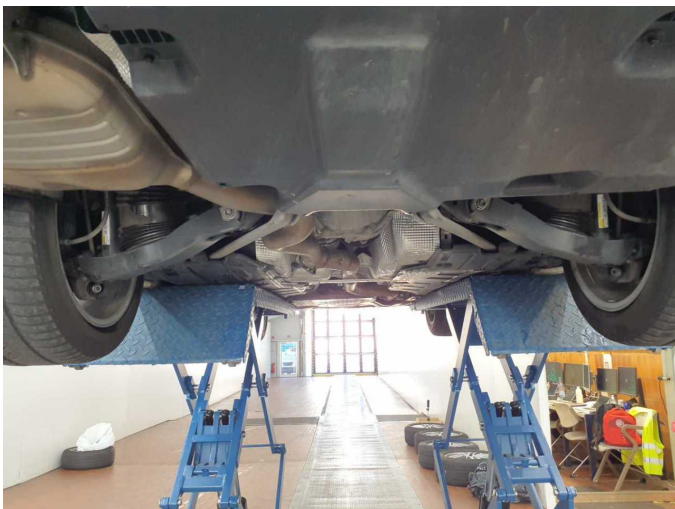
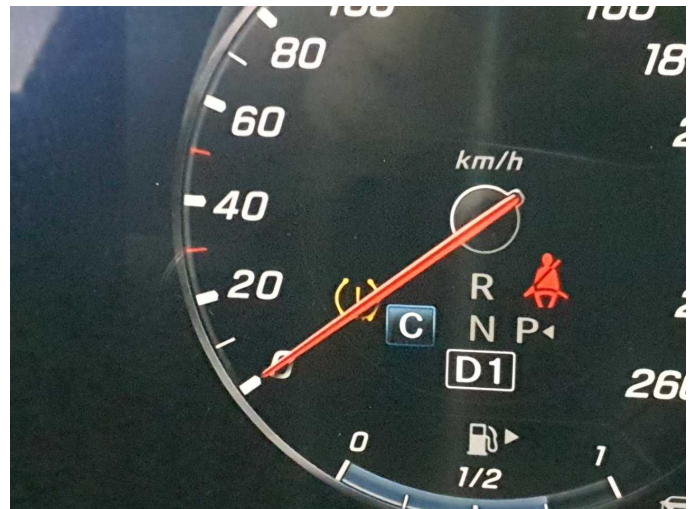


Figure 35: Misc.



Damage 1: Instrument panel: Indicator light (Reifen Druck Kontroll System) - on - Perform diagnosis



Damage 2: Trim / covers: Door trim - front left side - Damaged - Smart repair



Damage 2: Trim / covers: Door trim - front left side - Damaged - Smart repair



Damage 3: Front bumper: Front bumper - Scratched - Smart repair



Damage 3: Front bumper: Front bumper - Scratched - Smart repair



Damage 4: Rear bumper: Rear bumper - Scratched - Loss in value



Damage 4: Rear bumper: Rear bumper - Scratched - Loss in value



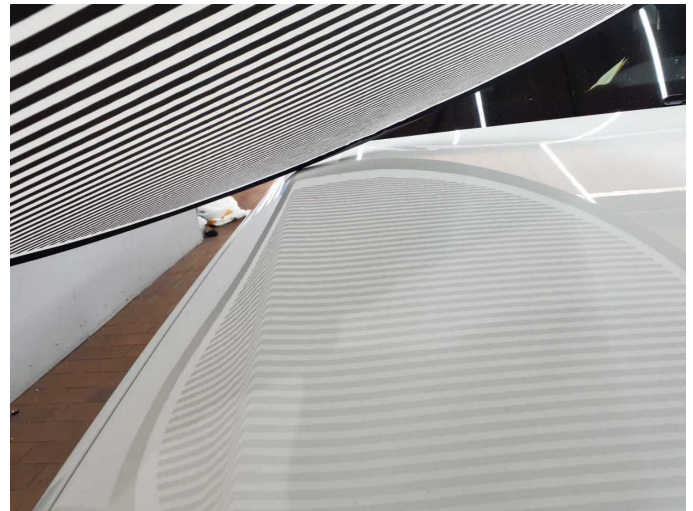
Damage 5: Side panel - rear left side: Side panel - Dent / paintcoat damage - Smart repair



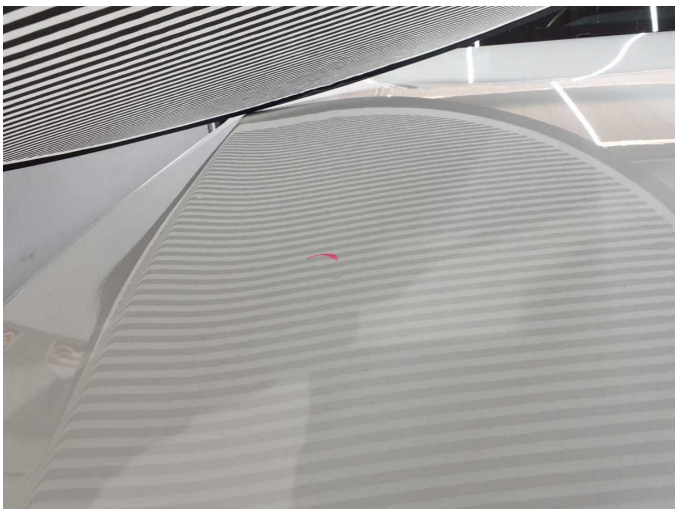
Damage 5: Side panel - rear left side: Side panel - Dent / paintcoat damage - Smart repair



Damage 6: Body: Body - Damage by hail - Cost estimate required



Damage 6: Body: Body - Damage by hail - Cost estimate required



Damage 6: Body: Body - Damage by hail - Cost estimate required



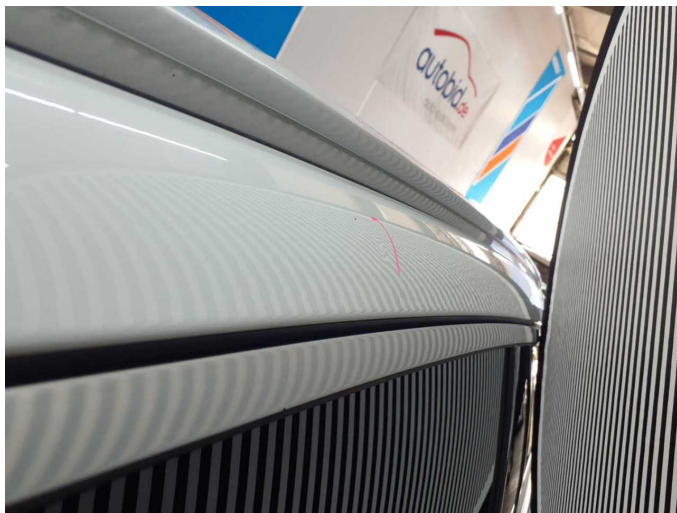
Damage 6: Body: Body - Damage by hail - Cost estimate required



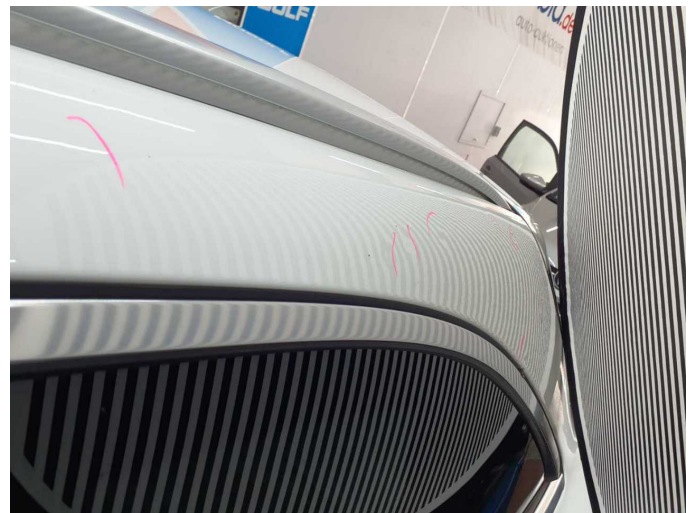
Damage 6: Body: Body - Damage by hail - Cost estimate required



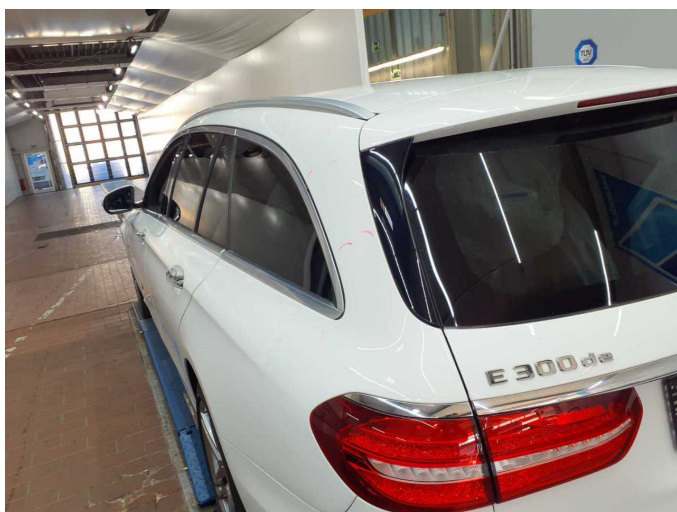
Damage 6: Body: Body - Damage by hail - Cost estimate required



Damage 6: Body: Body - Damage by hail - Cost estimate required



Damage 6: Body: Body - Damage by hail - Cost estimate required



Damage 6: Body: Body - Damage by hail - Cost estimate required



Damage 6: Body: Body - Damage by hail - Cost estimate required



Damage 6: Body: Body - Damage by hail - Cost estimate required



Damage 6: Body: Body - Damage by hail - Cost estimate required



Damage 6: Body: Body - Damage by hail - Cost estimate required



Damage 6: Body: Body - Damage by hail - Cost estimate required



Wear and tear 2: Boot lid / rear door: Boot lid - Scratch(es) - No deduction



Wear and tear 2: Boot lid / rear door: Boot lid - Scratch(es) - No deduction



Repainting 1: Roof rail - left side, Mudguard - left side, Side panel - rear left side, Door - rear left side



Repainting 1: Roof rail - left side, Mudguard - left side, Side panel - rear left side, Door - rear left side



Repainting 1: Roof rail - left side, Mudguard - left side, Side panel - rear left side, Door - rear left side



Repainting 1: Roof rail - left side, Mudguard - left side, Side panel - rear left side, Door - rear left side



Repainting 1: Roof rail - left side, Mudguard - left side, Side panel - rear left side, Door - rear left side



Repainting 1: Roof rail - left side, Mudguard - left side, Side panel - rear left side, Door - rear left side



Repainting 1: Roof rail - left side, Mudguard - left side, Side panel - rear left side, Door - rear left side



Repainting 1: Roof rail - left side, Mudguard - left side, Side panel - rear left side, Door - rear left side



Wartungshistorie

(gemäß Auftraggeber Informationen)

Fahrgestellnummer: W1K2132161A857007

Hersteller / Modell: MERCEDES-BENZ MB E 300 de T 9G-TRONIC Avantgarde

Datum	KM-Stand	Beschreibung
27.06.2025	100.190	Regelwartungsdienst
17.07.2024	71.161	Regelwartungsdienst
11.12.2023	38.546	Regelwartungsdienst
22.08.2023	30.511	HU + AU
24.11.2022	19.891	Regelwartungsdienst
31.08.2021	5.906	Kleine Inspektion