



# MERCEDES-BENZ E-Klasse

## E 300 de 4Matic T 9G-TRONIC

VIN NO W1K2132111A953723

Registration Number 111A953723



MOT Date

2026-06-01

Last Service



Number of Owners

1

Last Service Mileage



Number of Keys

2

First Registration Date

2021-06-29

Odometer Reading

141618 km

Country First Registered

Germany

### Inspection Report Summary

Customer	BCA Online	Report Number	P20250924092331
Inspection Date / Place	2025-09-24 / ARS Altmann AG Riedstadt	Cosmetic Grade	4

### Vehicle Summary

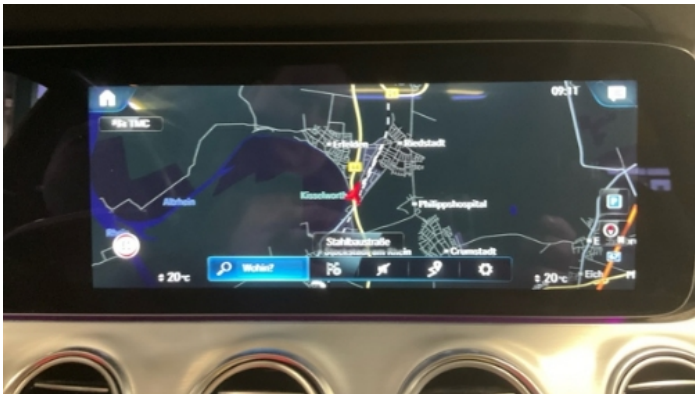
Vehicle Condition	Runner	VAT Type	Qualifying
Fuel Type	Plug - in Hybrid Electric Vehicle Diesel	Road Worthy	Yes
Colour	Silver	Engine Size (cc)	1950
Engine Size	2.0	No of Doors	5
Body Type	Stationwagon / Estate	Drive Train	All-Wheel-Drive permanent
Seat Colour		No of Seats	5
Seat Covering Name		Seat Covering	Synthetic Leather
Charging Cables	Occasional Use Charge	WLTP CO2 Emissions	
Gearbox Type	Automatic		

### Vehicle History & Documents

Service Book Available	Missing	Next Service Mileage	km
Previous Usage		Imported	No
Manufacturer Warrenty			

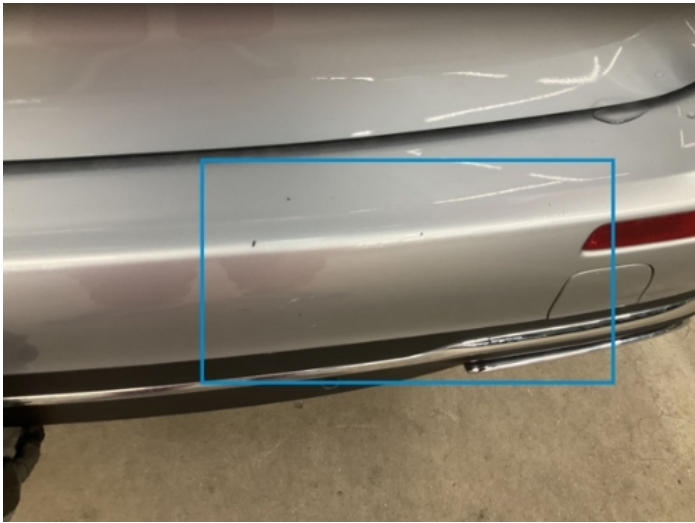












Equipment

Tow ball	Trip Computer	Adaptivecruisecontrol	Alloys wheels
Anti-lock braking	Diesel particulate filter	Digitaldashboard	Front parking sensors
Highbeamassist	Remote adjusting wing mirrors	Reversing Camera	Satellite navigation
Stability control	Distancewarningsystem	Electrictailgate	Laneassist
LED Headlamps	Rain sensitive windscreen wipers	Trafficsignrecognition	USB Socket
Airbag Status	Ambientlighting	Bluetooth telephone interface	Digital Radio
Fatiguewarningsystem	Heated wing mirrors	Parking Assistance	Remote central locking
Roof rails	Split folding rear seats	Sunroof	Electrically folding wing mirrors
Emergencybrakeassist	Leather steering wheel	Radio	Rear parking sensors

Equipment Details

Tow Ball Type	Electronic	Air Conditioning	Dual Zone Climate Control
Alloy Wheel Size	18	Seat Heating	Front
Sunroof Type	Opening Panoramic		

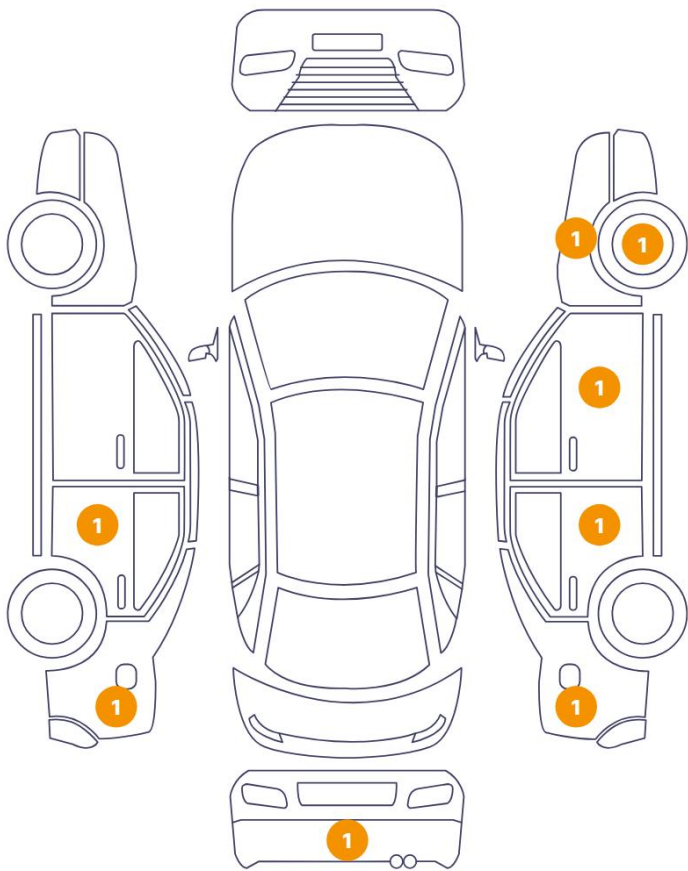
Wheels & Tyres

Right Front Tyre Depth	4	Left Front Tyre Depth	4
Right Rear Tyre Depth	5	Left Rear Tyre Depth	5



Cosmetic Damage

8 Schäden



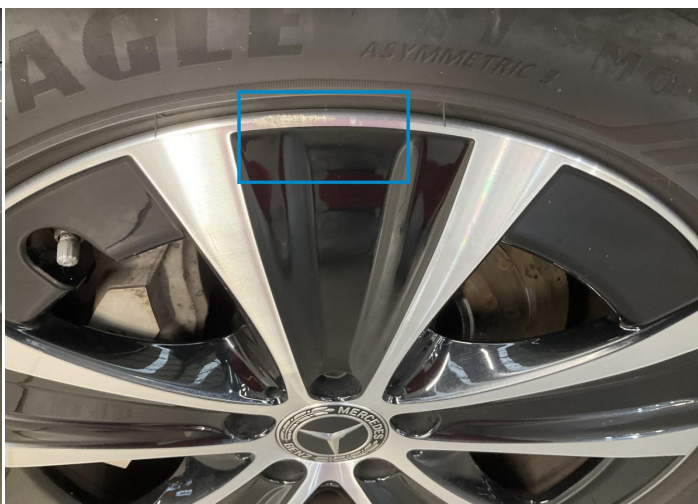
0 Schäden



Component	Damage	Comments
1 Fender / Front Right	Paint / Poor Previous Repair	
2 Rim / Front Right	Out of Bodywork / Scratch	
3 Door / Front Right	Paint / Poor Previous Repair	
4 Door / Back Right	Paint / Poor Previous Repair	
5 Side Panel / Back Right	Paint / Poor Previous Repair	
6 Bumper / Back	Paint / Scratch / Scuff	
7 Side Panel / Back Left	Paint / Poor Previous Repair	
8 Door / Back Left	Paint / Poor Previous Repair	



1. Fender / Front Right  
Paint / Poor Previous Repair -



2. Rim / Front Right  
Out of Bodywork / Scratch -



3. Door / Front Right  
Paint / Poor Previous Repair -



4. Door / Back Right  
Paint / Poor Previous Repair -



5. Side Panel / Back Right  
Paint / Poor Previous Repair -



6. Bumper / Back  
Paint / Scratch / Scuff -





7. Side Panel / Back Left  
Paint / Poor Previous Repair -



8. Door / Back Left  
Paint / Poor Previous Repair -

## Mechanical Condition

### Engine

Engine Starts	✓	Engine Status / EML	✓
Engine Leak Visible	✓		

### Control Lights

ABS Warning Light	✓	ESP Fault/Traction Control Malfunction Light	✓
Diesel Particulate Filter Light	✓	Airbag Warning Light	✓
Oil Pressure Warning Light	✓	Brake Warning Light	✓
Power Steering Warning Light	✓	Alternator / Battery	!
All - wheel Drive	✓	No Dashboard Lights	✓
Display Defect	✓	Tire Pressure Monitoring System	✓

### Gearbox

Gear Box	✓
----------	---

### Levels

Brakes Fluid	✓	Coolant Fluid	✓
--------------	---	---------------	---

### Equipments Test

Other Equipments	✓	Central Locking	✓
Main & Spare Keys Functioning	✓	Electric Windows	✓
Navigation System	✓	Audio Equipment	✓
Parking Sensors / Cameras Functioning	✓	AC / Heating System	✓

### Hybrid/EV

Hybrid System Fault	!	Charge Lead Condition	✓
Charge Port Condition	✓		



## Test Drive Inspection

Engine			
Engine Noise	✓	The Gears Scratch / Skip / Abnormal Operation	✓
Fume Quantity	✓	Power Loss	✓
Brake			
Brake System Anomaly	✓		
Steering Wheel			
Steering   Noise / Anomaly	✓		
General			
Test Driven Status	✓		
✓ <i>No troubles detected, good condition or correct tests, according to vehicle age and mileage</i>			
! <i>Damages or malfunction detected that requires repairs by the buyer</i>			
NA <i>Not applicable</i>			
☐ <i>Not tested</i>			

## Disclaimer

Please also note the "UserGuide condition report", which shows the scope of the vehicle description.

[User Guide](#)