



MERCEDES-BENZ E-Klasse

E 220 d T 9G-TRONIC

VIN NO W1K2132041A855215
Registration Number 041A855215



MOT Date	Number of Owners	Number of Keys	Odometer Reading
2025-01-01	1	1	127580 km
Last Service	Last Service Mileage	First Registration Date	Country First Registered
-	-	2020-06-30	Germany

Inspection Report Summary

Customer	BCA Online	Report Number	P20250313124954
Inspection Date / Place	2025-03-13 / BCA Neuss	Cosmetic Grade	4

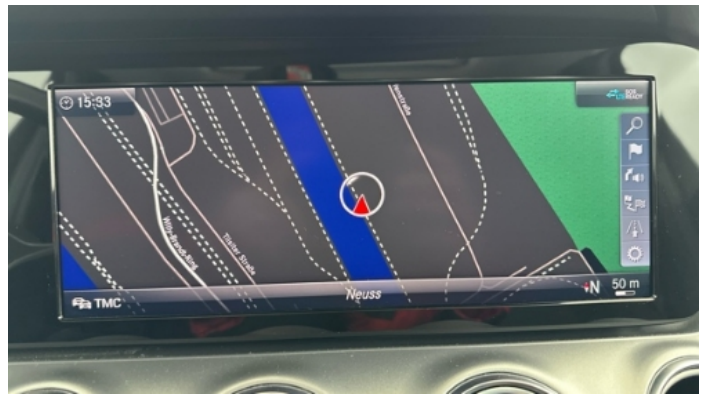
Vehicle Summary

Vehicle Condition	Runner	VAT Type	Qualifying
Fuel Type	Diesel	Road Worthy	Yes
Colour	Black	Engine Size (cc)	1950
Engine Size	2.0	No of Doors	5
Body Type	Stationwagon / Estate	Drive Train	Rear
Seat Colour		No of Seats	5
Seat Covering Name	Schwarz	Seat Covering	Cloth
Charging Cables		NEDC CO2 Rating (q/km)	128
Gearbox Type	Automatic		

Vehicle History & Documents

Service Book Available	Missing	Next Service Mileage	km
Previous Usage		Imported	No
Manufacturer Warrenty			







Equipment

Tinted Glass	Trip Computer	Airbag Status	Anti-lock braking
Cruise control	Enhanced speaker system	Remote adjusting wing mirrors	Reversing Camera
Satellite navigation	Sunroof	Leather steering wheel	Radio
Tow ball	USB Socket	Alloys wheels	Bluetooth telephone interface
Diesel particulate filter	Front parking sensors	Remote central locking	Roof rails
Stability control	Electric tailgate	LED Headlamps	Rear parking sensors

Equipment Details

Tow Ball Type	Electronic	Air Conditioning	Dual Zone Climate Control
Alloy Wheel Size	17	Enhanced Speaker System	Burmester
Seat Heating	Front	Sunroof Type	Tilt/Slide Glass

Wheels & Tyres

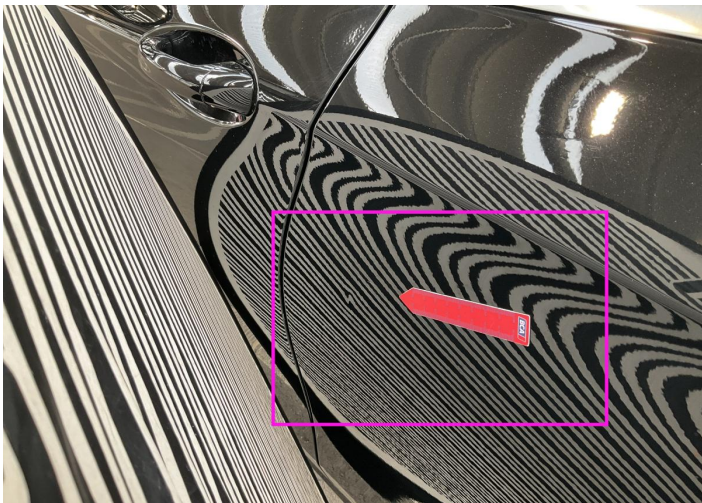
Right Front Tyre Depth	6	Left Front Tyre Depth	6
Right Rear Tyre Depth	6	Left Rear Tyre Depth	6

Cosmetic Damage

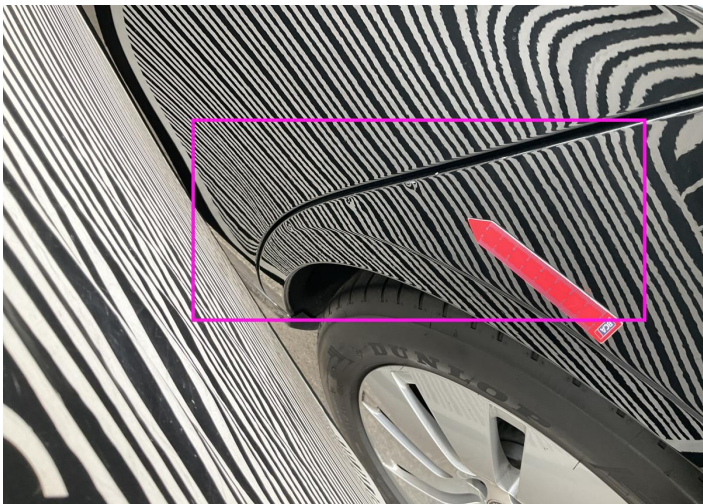
	Component	Damage	Comments
1	Panel Filling / Front Left	Interior / Scraped	
2	Door / Back Left	Bodywork / Dent / Dent	
3	Side Panel / Back Left	Bodywork / Dent / Dent	
4	Roof	Paint / Scratch / Scuff	
5	Tailgate	Paint / Scratch / Scuff	
6	Bumper / Back	Paint / Scratch / Scuff	
7	Bumper / Back	Paint / Poor Previous Repair	
8	Side Panel / Back Right	Bodywork / Dent / Dent	
9	Bumper / Front	Paint / Scratch / Scuff	
10	Hood	Bodywork / Dent / Dent	
11	Panel Filling / Back Right	Interior / Holed	
12	Seat / Front Right	Interior / Holed	



1. Panel Filling / Front Left
Interior / Scraped -



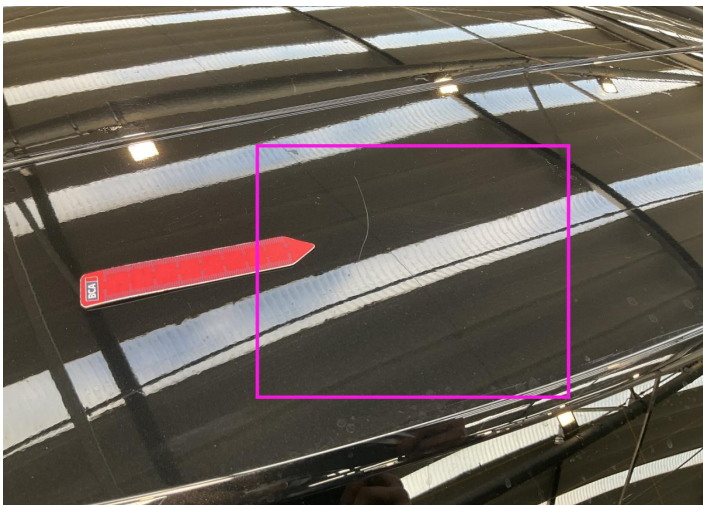
2. Door / Back Left
Bodywork / Dent / Dent -



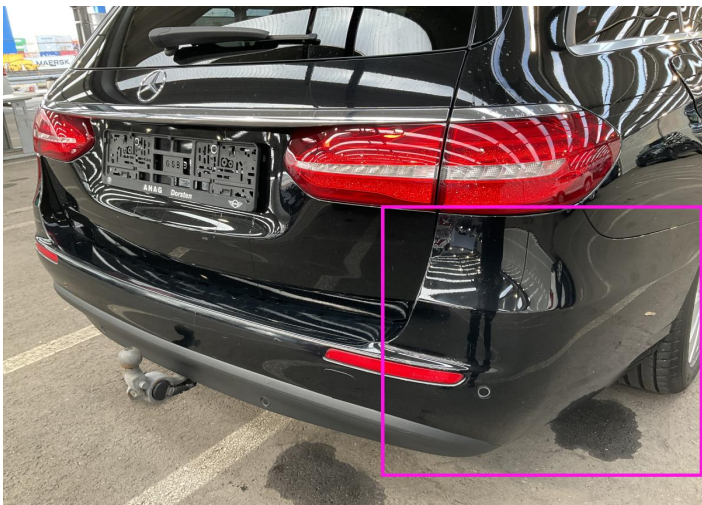
3. Side Panel / Back Left
Bodywork / Dent / Dent -



4. Roof
Paint / Scratch / Scuff -



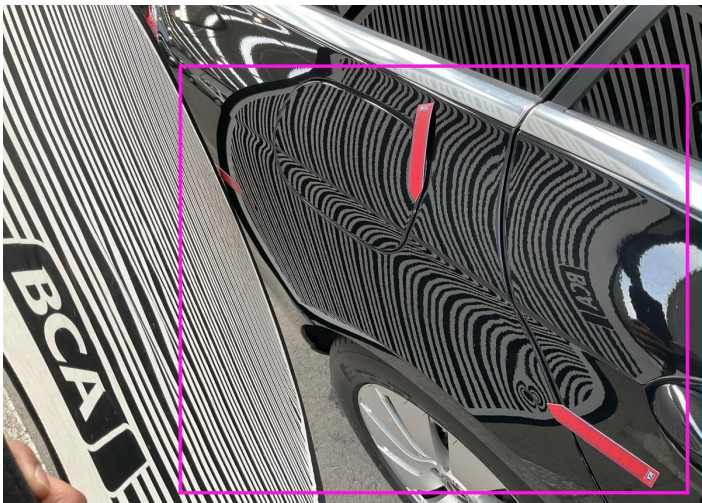
5. Tailgate
Paint / Scratch / Scuff -



6. Bumper / Back
Paint / Scratch / Scuff -



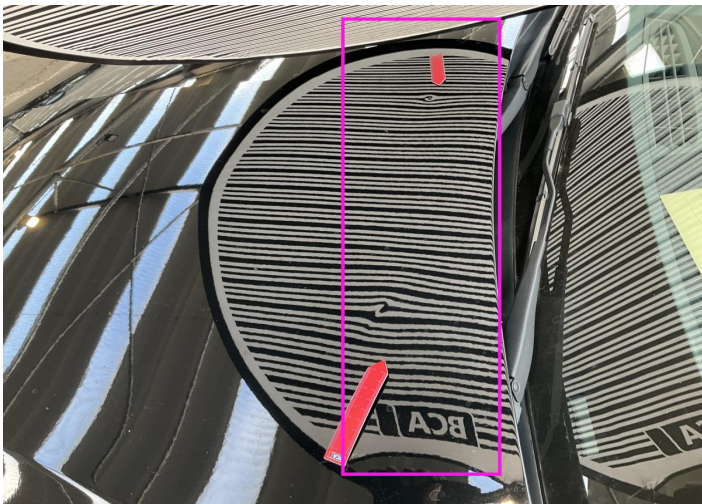
7. Bumper / Back
Paint / Poor Previous Repair -



8. Side Panel / Back Right
Bodywork / Dent / Dent -



9. Bumper / Front
Paint / Scratch / Scuff -



10. Hood
Bodywork / Dent / Dent -



11. Panel Filling / Back Right
Interior / Holed -



12. Seat / Front Right
Interior / Holed -

Mechanical Condition

Control Lights

ABS Warning Light	✓	Airbag Warning Light	✓
Alternator / Battery	✓	Brake Warning Light	✓
Oil Pressure Warning Light	✓	Power Steering Warning Light	✓
ESP Fault/Traction Control Malfunction Light	✓	No Dashboard Lights	✓
Display Defect	✓	Diesel Particulate Filter Light	✓

Engine

Engine Leak Visible	✓	Engine Starts	✓
Engine Status / EML	✓		

Levels

Coolant Fluid	✓
---------------	---

Equipments Test

Electric Windows	✓	Central Locking	✓
Audio Equipment	✓	Navigation System	✓
AC / Heating System	✓		

Gearbox

Gear Box	✓
----------	---

Test Drive Inspection

Brake			
Brake System Anomaly		✓	
Engine			
Fume Quantity	✓	Engine Noise	✓
Power Loss	✓	The Gears Scratch / Skip / Abnormal Operation	✓
Steering Wheel			
Steering Noise / Anomaly		✓	
Gearbox			
Automatic Shift		✓	
✓ <i>No troubles detected, good condition or correct tests, according to vehicle age and mileage</i>			
! <i>Damages or malfunction detected that requires repairs by the buyer</i>			
NA <i>Not applicable</i>			
= <i>Not tested</i>			

Disclaimer

Please also note the "UserGuide condition report", which shows the scope of the vehicle description.

[User Guide](#)