



# MERCEDES-BENZ E-Klasse

## E 220 d T 9G-TRONIC

VIN NO W1K2132041A855215  
Registration Number 041A855215



MOT Date



Last Service



Number of Owners



Last Service Mileage



Number of Keys



First Registration Date



2020-06-30

Odometer Reading



127580 km

Country First Registered



### Inspection Report Summary

Customer	BCA Online	Report Number	P20250313124954
Inspection Date Place	2025-03-13 / BCA Neuss	Cosmetic Grade	4

### Vehicle Summary

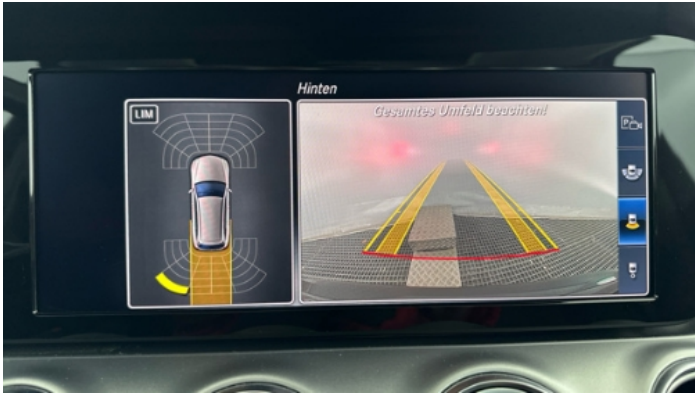
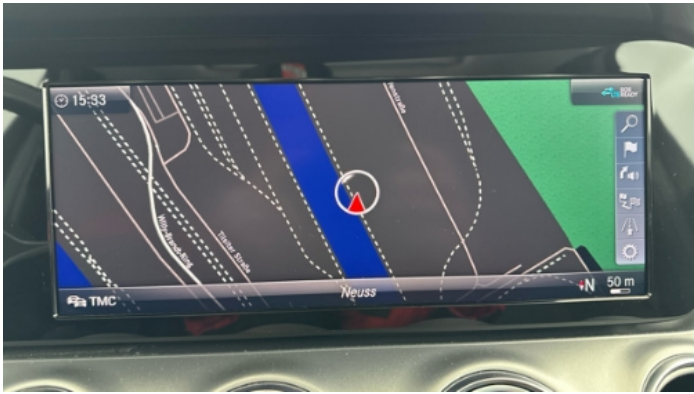
Vehicle Identification Number	W1K2132041A855215	VAT Type	Qualifying
Vehicle Condition	Runner	Road Worthy	Yes
Fuel Type	Diesel	Number of Keys	1
Colour	Black	Engine Size (cc)	1950
Engine Size	2.0	No of Doors	5
Body Type	Stationwagon / Estate	Drive Train	Rear
Seat Colour		No of Seats	5
Seat Covering Name	Schwarz	Seat Covering	Cloth
Charging Cables		NEDC CO2 Rating (q/km)	128
Gearbox Type	Automatic		

### Vehicle History & Documents

Service Book Available	Missing	Next Service Mileage	km
Previous Usage		Imported	No
Manufacturer Warrenty			









### Equipment

Tinted Glass	Trip Computer	Airbag Status	Anti-lock braking
Cruise control	Front parking sensors	Remote central locking	Roof rails
Stability control	Electric tailgate	LED Headlamps	Rear parking sensors
Tow ball	USB Socket	Alloys wheels	Bluetooth telephone interface
Enhanced speaker system	Remote adjusting wing mirrors	Reversing Camera	Satellite navigation
Sunroof	Leather steering wheel	Radio	

### Equipment Details

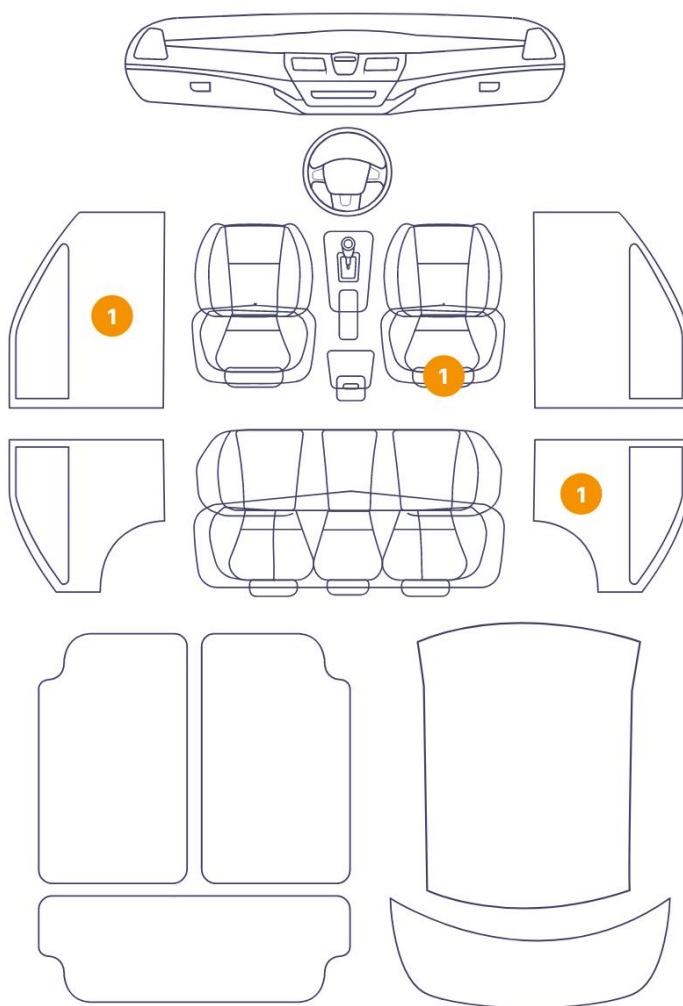
Tow Ball Type	Electronic	Air Conditioning	Dual Zone Climate Control
Alloy Wheel Size	17	Enhanced Speaker System	Burmester
Seat Heating	Front	Sunroof Type	Tilt/Slide Glass

### Wheels & Tyres

Right Front Tyre Depth	6	Left Front Tyre Depth	6
Right Rear Tyre Depth	6	Left Rear Tyre Depth	6



### 3 Damages

6/11 - Report Number P20250313124954

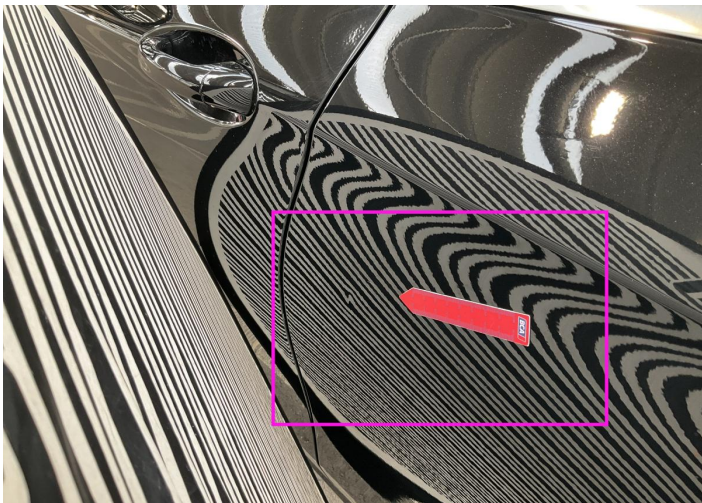
11	Panel Filling / Back Right	Interior / Holed
----	----------------------------	------------------

12	Seat / Front Right	Interior / Holed
----	--------------------	------------------

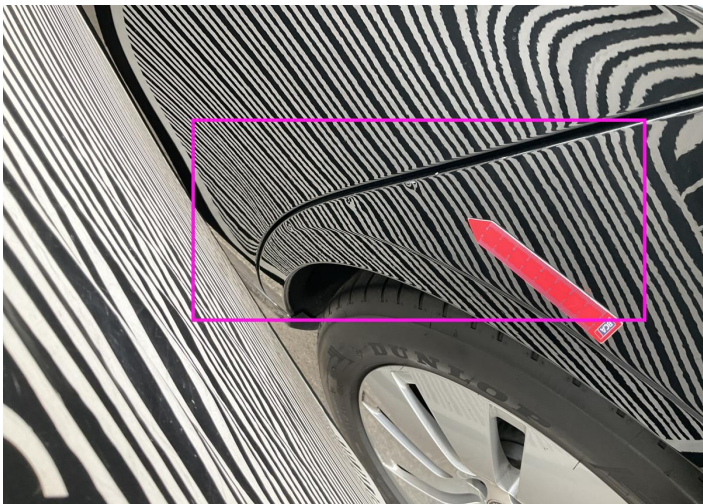




1. Panel Filling / Front Left  
Interior / Scraped -



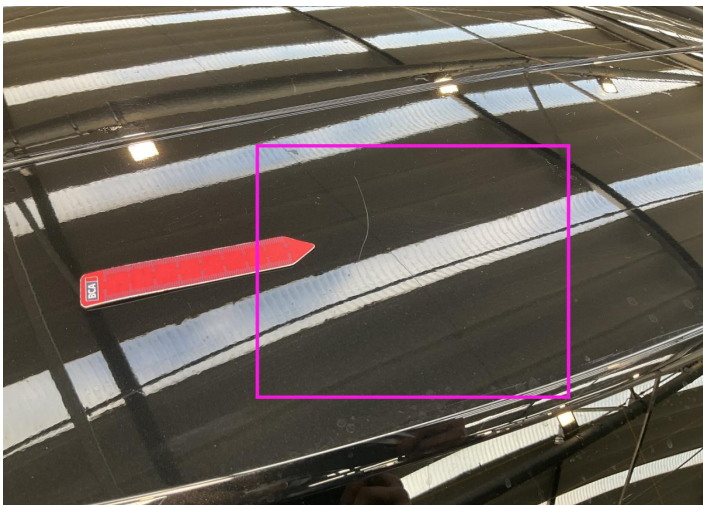
2. Door / Back Left  
Bodywork / Dent / Dent -



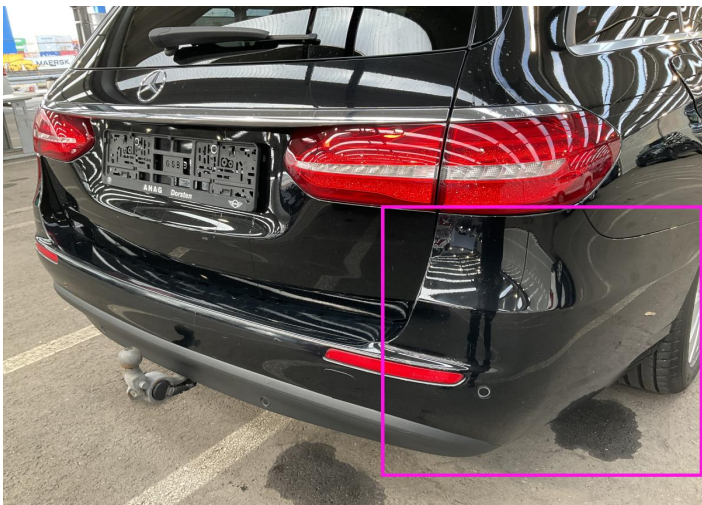
3. Side Panel / Back Left  
Bodywork / Dent / Dent -



4. Roof  
Paint / Scratch / Scuff -



5. Tailgate  
Paint / Scratch / Scuff -

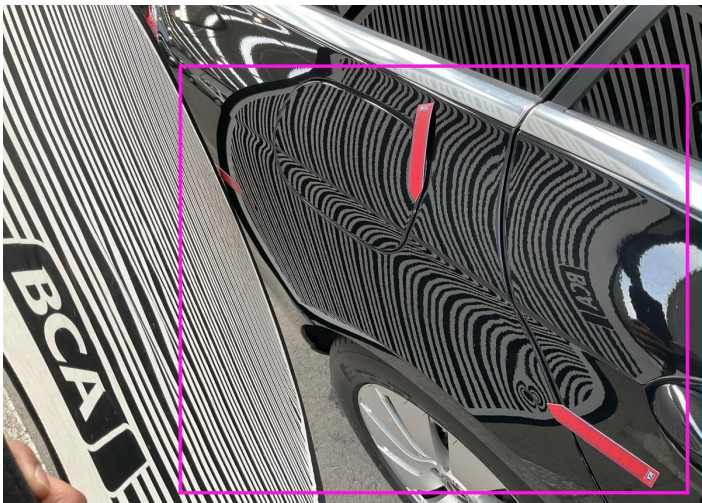


6. Bumper / Back  
Paint / Scratch / Scuff -





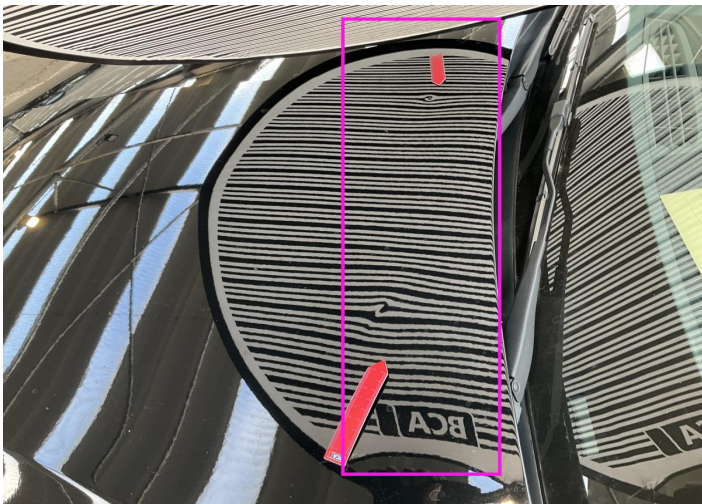
7. Bumper / Back  
Paint / Poor Previous Repair -



8. Side Panel / Back Right  
Bodywork / Dent / Dent -



9. Bumper / Front  
Paint / Scratch / Scuff -



10. Hood  
Bodywork / Dent / Dent -



11. Panel Filling / Back Right  
Interior / Holed -



12. Seat / Front Right  
Interior / Holed -

## Mechanical Condition

### Control Lights

ABS Warning Light	✓	Airbag Warning Light	✓
Alternator / Battery	✓	Brake Warning Light	✓
Oil Pressure Warning Light	✓	Power Steering Warning Light	✓
ESP Fault/Traction Control Malfunction Light	✓	No Dashboard Lights	✓
Display Defect	✓	Diesel Particulate Filter Light	✓

### Engine

Engine Leak Visible	✓	Engine Starts	✓
Engine Status / EML	✓		

### Levels

Coolant Fluid	✓
---------------	---

### Equipments Test

Electric Windows	✓	Central Locking	✓
Audio Equipment	✓	Navigation System	✓
AC / Heating System	✓		

### Gearbox

Gear Box	✓
----------	---



Test Drive Inspection

Brake			
Brake System Anomaly		✓	
Engine			
Fume Quantity	✓	Engine Noise	✓
Power Loss	✓	The Gears Scratch / Skip / Abnormal Operation	✓
Steering Wheel			
Steering   Noise / Anomaly		✓	
Gearbox			
Automatic Shift		✓	
✓ No troubles detected, good condition or correct tests, according to vehicle age and mileage			
! Damages or malfunction detected that requires repairs by the buyer			
NA Not applicable			
= Not tested			

Disclaimer

Please also note the "UserGuide condition report", which shows the scope of the vehicle description.

[User Guide](#)