



Expertise

Protocol number: 41337459  
Order No. / Reference: 24992421  
Inspection date: 1 Sept 2025

Manufacturer: Mercedes-Benz  
VIN: W1K2130041B090768

Model: E 220 d 9G-TRONIC Avantgarde



Vehicle details	
Manufacturer / Type / Model / Equipment	
Mercedes-Benz E 220 d 9G-TRONIC Avantgarde	
Vehicle Identification number	W1K2130041B090768
Mileage (Read)	131,846 km
First registration	29 Jun 2022
Number of holders	1
Next periodical technical inspection	05/2027
(Report on hand)	
Power / Engine displacement	147 kw / 1,993 ccm
Fuel type / Cylinder	Hybrid Diesel / E / 4
Gearbox / Number of gears	Automatic / 9
Type of drive	Rear drive
Type of vehicle	Saloon car
Colour / colour code	SELENITGRAU
Doors / Seats	4 / 5
Upholstery type	Cloth / leather combination
Colour of upholstery	Black-Grey
Vehicle with smoke odor	no



## Vehicle details

<b>Maintenance booklet / proof</b>	digital proof / complete	<b>Next maintenance in</b>	262 Tag(e)
<b>Last maintenance on / at</b>	05/2025 at 126,185 km		
<b>Key is / should be</b>	2 / 2	<b>FZG documents</b>	ZB#2 (B) was available (copy), ZB#1 (S) was not available
		<b>Letter No.</b>	GJ487409
<b>Previous damage / Accident</b>	Detectable	<b>Repainting</b>	Detectable
<b>Inspection conditions</b>	sufficient	<b>Lifting equipment / pit</b>	yes
<b>Test drive</b>	Not performed	<b>Engine function test</b>	Performed
<b>Manufacturer key number/ type code number</b>	2222 / BEJ 00045		
<b>Emission standard</b>	EURO6;WLTP;AP;PI/CI; M, N1 I	<b>Fine dust sticker</b>	
<b>Permitted total weight</b>	2,410 kg	<b>Empty weight</b>	

## Tyres

### Mounted tyres

#	Tyre size	Type of tyre	Manufacturer	Tread depth
1)	245/45 R18 100Y	Summer tyres on Light alloy	Goodyear	4mm / 4mm
2)	245/45 R18 100Y	Summer tyres on Light alloy	Goodyear	4mm / 4mm

### Additional tyres

#	Tyre size	Type of tyre	Manufacturer	Tread depth
1)	245/45 R18 100V	Winter tyres (Without wheel rim)	Uniroyal	5mm / 5mm
2)	245/45 R18 100V	Winter tyres (Without wheel rim)	Uniroyal	5mm / 5mm

**Legend:** Tread depth information for tires on the left is in the first place, for tires on the right is in the second place on the axle in the direction of travel

## Equipment

### Standard equipment

- ADAPTIVE BRAKE with hill start assist, pre-filling and dry braking in wet conditions
- Airbag: Automatic passenger airbag deactivation
- Airbag: Sidebag for driver and front passenger (combined thorax/pelvis bag)
- Anti-lock braking system (ABS)
- Attention Assist (can detect typical signs of fatigue based on driver behavior and warn the driver of increasing fatigue or inattention. This system can increase driving safety, especially on long journeys and at night. ATTENTION ASSIST detects typical signs of fatigue and extreme inattention based on steering behavior and warns the driver visually and acoustically of impending microsleep.)
- Active Brake Assist (can help you avoid rear-end collisions with vehicles ahead or stationary vehicles, as well as accidents with moving pedestrians or cyclists. In addition to distance and collision warnings, the system also offers situation-appropriate brake boosting—including autonomous emergency braking.)
- Electronic Stability Program (ESP) (with traction control (ASR))
- Chassis: AGILITY CONTROL chassis with selective damping system and lowered suspension (offers optimal roadholding without sacrificing ride comfort. The passive selective damping system ensures a confident driving experience on any road surface by automatically optimizing rolling behavior, damping effect, and stabilization.)
- Transmission: Automatic 9-speed, 9G-TRONIC (including DIRECT SELECT selector lever and DIRECT SELECT steering wheel shift paddles)
- THERMATIC automatic climate control (2-zone automatic climate control: allows individually adjustable temperatures for the driver and front passenger sides - climate control via the multimedia system or the climate control unit in the center console - automatic air recirculation (only in conjunction with navigation) - fine dust activated carbon filter to filter dust, soot, and pollen, as well as to reduce pollutants and odors - dew point sensor, continuous defroster nozzle under the windshield, and central defrost outlet)
- Steering column mechanically adjustable in height and length
- Mercedes-Benz emergency call system (can provide a decisive time advantage in an emergency. A communications module with its own SIM card automatically triggers an emergency call in the event of an accident, which can shorten the time until emergency services arrive. The emergency call can also be triggered manually to organize rapid assistance.)
- Navigation accessories: Pre-installation for Live Traffic Information
- AdBlue tank with 23.5 l capacity
- Airbag for driver and front passenger
- Airbag: Kneebag for driver
- Airbag: Windowbags left/right
- Ambient lighting with 64 colors and 3 color zones
- Armrest for driver and passenger foldable
- Left and right exterior mirrors, heated and electrically adjustable, painted in body color (with aspherically curved mirror glass and integrated LED indicator light)
- Basic services (breakdown management, maintenance management, accident management, telediagnosis, remote vehicle diagnosis)
- On-board computer
- diesel particulate filter
- tachometer
- Third brake light
- DYNAMIC SELECT (The DYNAMIC SELECT driving programs change the handling of your Mercedes at the touch of a button. They allow you to control the characteristics of the engine, transmission, chassis, and steering to suit the driving situation: whether dynamic in Sport mode, completely relaxed in Comfort mode, or particularly economical in Eco mode. You determine the style of your drive.)
- Electric window lifter with comfort operation and anti-pinch protection, 4-way
- Velour floor mats (in interior color)
- Heated rear window with timer control
- Interior headliner in neva grey fabric
- KEYLESS-GO start function
- Headrests (5)
- LED high-performance headlights (low beam with LED reflection technology - high beam with LED reflection technology - signal light with trifunctional flare for daytime running light, position light and direction indicator with LED technology - adaptive full-LED rear lights)
- Steering wheel: Multifunction steering wheel in nappa leather with a 3-spoke design (high-gloss black spokes with silver chrome surround - shift paddles in silver chrome - controlled via touch panels: left: instrument cluster, cruise control and limiter or Active Distance Assist DISTRONIC right: multimedia system (e.g., audio volume and track selection, telephony and navigation) touch sensitivity adjustable via media display)
- Center console with spontaneous storage (storage compartment under the armrest with 2 USB ports (Type C) and open storage on the rear - cup holders front and rear - storage compartments in the door panels with cup holders - lockable, air-conditioned glove compartment - glasses compartment in the overhead control panel (not available with MBUX Interior Assistant))

- Navigation: Hard drive navigation (Mercedes-Benz look and feel of the navigation, all map data stored on the hard drive, fast hard drive navigation, current map data thanks to 3 years of free map updates (from first registration, vehicle-specific), destination input via touch function or voice control, route calculation including intermediate destinations, numerous route options (eco, trailer, fast, short, automatic, etc.) as well as avoidance options (motorways, ferries, tunnels, toll roads, unpaved roads, car trains, vignette roads))
- Package: Seat Comfort (various electric and manual adjustment options for the front seats to adapt to the specific body and comfort requirements of the driver and front passenger - 4-way lumbar support - electric seat cushion tilt adjustment - electric height adjustment - electric backrest adjustment - mechanical seat cushion depth adjustment by 6 cm with leg rest pad - mechanical fore/aft adjustment - mechanical headrest adjustment)
- Radio: Advanced MBUX functions (personalization (profiles) and prediction functions - LINGUATRONIC with natural speech understanding - activation via Hey Mercedes - Wi-Fi hotspot - Internet radio)
- Radio: MBUX Multimedia System (Enjoy the beauty and intelligence of a digital multimedia system. You decide which information it displays. Look forward to a fully digital cockpit consisting of two displays, each with a screen diagonal of 10.25 inches, with touch functionality for the media display. - Bluetooth interface - USB - SD card / SDHC card - Dual-tuner radio - Online-capable multimedia system)
- Tire pressure control (continuously monitors the inflation pressure of all four tires)
- Remote Services Plus (Communication module - Mercedes me Services, remote vehicle status query, programming of auxiliary heating/ventilation, remote door locking and unlocking, sunroof/ windows with remote locking and opening including ventilation radio, personalized vehicle location, vehicle tracking, geographical vehicle monitoring, parking service monitoring, location function (Remote Vehicle Finder), notification when driving at excessive speed, Send2Car function, accident and breakdown management, maintenance management, telediagnosis, remote vehicle diagnostics, software updates).
- Seats: Front seats electrically adjustable (electric adjustment for seat height and backrest angle - mechanical for longitudinal adjustment and headrests)
- Cruise control (with variable speed limiter SPEEDTRONIC)
- Touchpad (integrated into the center console, including a palm rest - single and multi-finger gestures, swiping movements, and zoom gestures by spreading and pinching the fingers - recognizes handwritten characters: letters, special characters, and numbers - clear haptic feedback)
- Central locking
- Decorative elements made of aluminum with light longitudinal grain
- Package: Storage package (double cup holder in the center console - map pockets on the back of the front seats - net on the trunk floor (not applicable to plug-in hybrids) - folding box under the trunk/ loading area floor (not applicable to plug-in hybrids) - bag hook under the parcel shelf (not applicable to plug-in hybrids).)
- Package: AVANTGARDE Exterior (front bumper with chrome trim strip, chrome front splitter; radiator grille with chrome surround, 2 chrome slats, and vertical struts with high-gloss black front; 43.2 cm (17") 5-twin-spoke light-alloy wheels painted high-gloss black with a high-shine finish, 225/55 R 17 on 7.5 J x 17 ET 40; side skirts painted in body color; beltline trim strip and window surround in polished aluminum; rear bumper with chrome trim strip)
- Upholstery: ARTICO man-made leather/Norwich fabric
- PRE-SAFE system (The system can detect critical driving situations in advance and initiate preventive measures to protect the occupants if an accident is imminent. In addition to reversible seat belt tensioning and other measures, the new system also includes PRE-SAFE Sound.)
- Radio accessories: Digital radio (Digital radio offers you even more information and entertainment with significantly more programs. Choose your personal favorite stations. At the same time, the clear, noise-free reception enhances your listening experience.)
- Radio accessory: Communication module (LTE) for using Mercedes me connect services (The communication module (LTE) offers you a clear advantage in terms of convenience and safety. It constantly connects the vehicle to the internet, allowing you to use helpful services such as Live Traffic Information from Mercedes me connect. Two mobile antennas and an LTE-capable SIM card ensure a fast connection.)
- Windshield wipers with rain sensor (with 2 sensitivity levels – the electronically controlled rain sensor makes driving more relaxing in adverse weather conditions – the system detects whether the windshield is wet and, when interval wiping is activated, automatically adjusts the wiper frequency to the appropriate level of precipitation)
- Power steering
- Seats: i-Size child seat anchorage (on the outer rear seats - This system allows for quick and secure attachment of i-Size and ISOFIX child seats in the rear for the best possible protection of the child in the event of an accident. Top Tether anchorage points provide additional safety by anchoring the child seat behind the rear headrests.)
- High-visibility vest for drivers
- Electronic immobilizer (including locking system with 3-channel radio remote control in the electronic key in chrome look, optical locking feedback and emergency opening (recognized by AZT and TÜV))
- Green heat-insulating glass all around (including rear window made of toughened safety glass)



## Extra equipment

- Chassis: AGILITY CONTROL chassis with selective damping system (combines balanced ride comfort and high driving stability. Thanks to the passive damping system, you can enjoy a confident driving experience on any road surface: rolling behavior, damping effect, and stabilization are continuously and automatically adjusted to the current surface.)
- Glazing: Heat-insulating, dark-tinted glass (for the rear side windows and rear window). The dark tint of the rear side windows and rear window emphasizes the sporty and individual look. At the same time, it protects rear passengers and the interior from prying eyes and direct sunlight.
- Package: Night for AVANTGARDE Exterior (front bumper with high-gloss black trim element - 45.7 cm (18") 5-twin-spoke light-alloy wheels, painted high-gloss black with a high-sheen finish, measuring 245/45 R18 on 8 J x 18 ET 43 - beltline trim strip, window surround, and trim strip in the rear bumper in high-gloss black - exterior mirror housings in high-gloss black - heat-insulating dark-tinted glass)
- Sunroof: Electric panoramic sunroof in glass version (with comfort and automatic rain closure, PRE-SAFE closing function, electric sunblind and anti-pinch protection)
- Wheels: 45.7 cm (18") light-alloy wheels in 5-twin-spoke design, painted high-gloss black (high-sheen finish - 8 J x 18 ET 43, tire size 245/45 R 18)
- Center console wood ash black open-pore
- Elimination of type markings on trunk lid
- Interior headliner fabric black
- Package: Business (without MBUX Augmented Reality) (MBUX High-End Package - Connectivity Package Navigation - Traffic Sign Assistant - Smartphone Integration (Apple CarPlay and Android Auto) - Preparation for digital key handover - Widescreen Cockpit - Wireless charging system for mobile devices - Heated seats for driver and front passenger - Parking Package with rearview camera - Fuel tank with a capacity of 66 liters (916) (60 liters for diesel plug-in hybrids).)
- Package: Parking Package with Rearview Camera (The Parking Package with rearview camera makes it easier to find and select a parking space, as well as to park in and out of parallel and perpendicular parking spaces or garages. The Active Parking Assistant assists the vehicle into parking spaces, including cruise control and automatic gear shifting.)
- Paint finish: metallic
- Seats: Folding seat backrests in the rear
- Seats: Seat heating for driver and front passenger (selectable in three levels - Intelligent and comfortable: The seat heating switches back automatically)

## Brief expert findings

Documents submitted	At the time of the inspection, the registration certificate Part 2 (letter) was available, but the registration certificate Part 1 (certificate) was not. (Copy)
VIN comparison	The vehicle identification number (VIN) was read from the vehicle and its conformity with the submitted documents was verified during the inspection by the undersigned.
Inspection	The inspection conditions were sufficient for the assessment of the vehicle. Lifting equipment and a pit were available for examining the vehicle.
Test drive	No test drive/maneuvering was carried out during the inspection of the vehicle.
Engine function test	An engine test run was performed.

## Value reducing factors

No.	Component group	Description
1	Bonnet	Bonnet - dent(s) - Smart repair

## Previous damages

No.	Previous damage	Extent of damage (Net)
1	Side - left, Provided by user / customer, from 28 Sept 2024	1.136,26 €

## Repainting

No.	Repainting
1	Roof rail - left side, Mudguard - left side, Side panel - rear left side



## Paint coat thickness measurement

Roof rail - left side	210 µm	Mudguard - left side	212 µm
Side panel - rear left side	205 µm		

## Order/Scope of order

The order was placed to prepare a sales report for the vehicle described. This includes the following:

- Description of core relevant information about the vehicle
- Documentation of equipment features  
(*Delivery by third-party service providers*)
- Documentation of damage, defects, missing parts
- Documentation of previous damage, unrepaired previous damage, repainting
- a brief visual or functional inspection of the equipment details if possible.  
(*Functional tests of driver assistance systems are not included in the scope of services!*)
- a photo documentation of the vehicle

## Basis for the order

This product is based on the Alphabet Fuhrpark GmbH guidelines for vehicle returns and valuations. The expert makes the explicit findings in each individual case objectively within the framework of the specified standards based on his or her own expertise.

The vehicle inspection takes place in a disassembled state.

Damage or defects that can only be detected during disassembly/diagnosis work or through advanced knowledge remain within the scope of the prognosis risk. An extended risk exists for concealed defects caused by fraudulent deception and not identifiable by the expert.

Damage or defects resulting from normal use or wear and tear of the vehicle will be accepted according to the applicable standard.

There was no explicit identification or monetary consideration of the expected features within the product.

Features which in their nature and severity slightly exceed normal use but do not constitute unacceptable damage will be documented and identified under signs of use if necessary.

Damage or defects which, according to the underlying standard, can no longer be attributed to normal use or wear and tear are listed in the product under "Depreciating Factors".

Depending on the product specification, a monetary ID can be provided. If this takes place, the costs can be 100% d or pro rata depending on the vehicle's age and mileage.

## Previous damages

According to available information previous damages were repaired at the vehicle. Traces of repairs, which allow conclusions about the area of repair, were not recognizable during the inspection.





**Figure 1:** Diagonal front (left)



**Figure 2:** Diagonal front (right)



**Figure 3:** Diagonal rear (left)



**Figure 4:** Diagonal rear (right)



**Figure 5:** Interior - front



**Figure 6:** Interior - rear





Figure 7: Instrument cluster



Figure 8: Instrument panel



Figure 9: interior 360° view



Figure 10: Cargo area



Figure 11: VIN



Figure 12: Mounted tyres



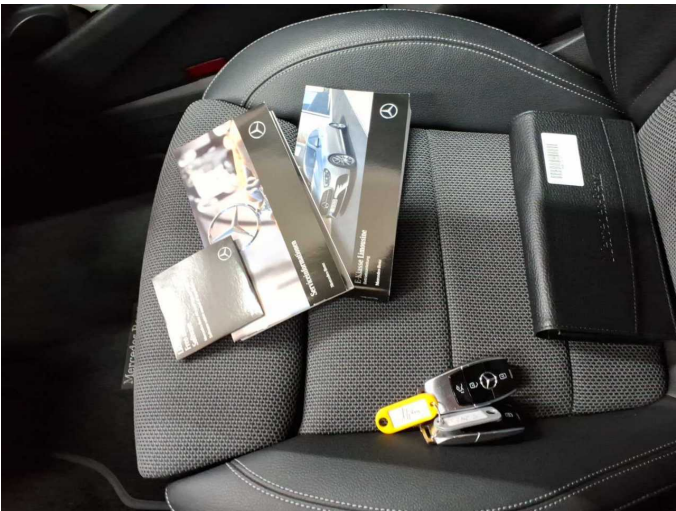


Figure 13: Documents



Figure 14: Documents

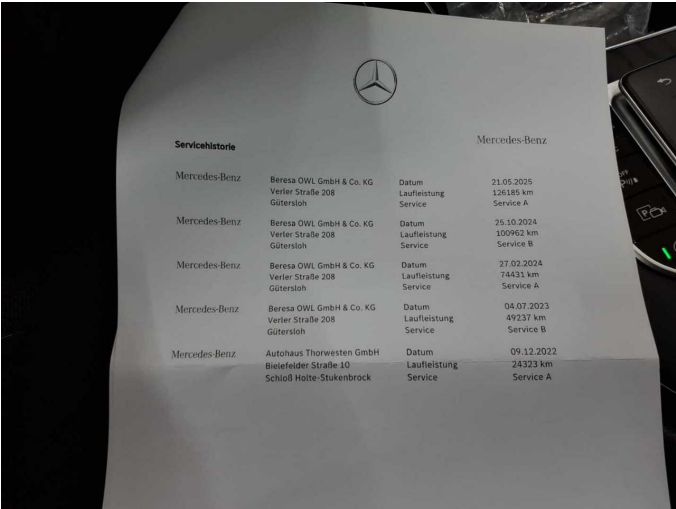


Figure 15: Documents

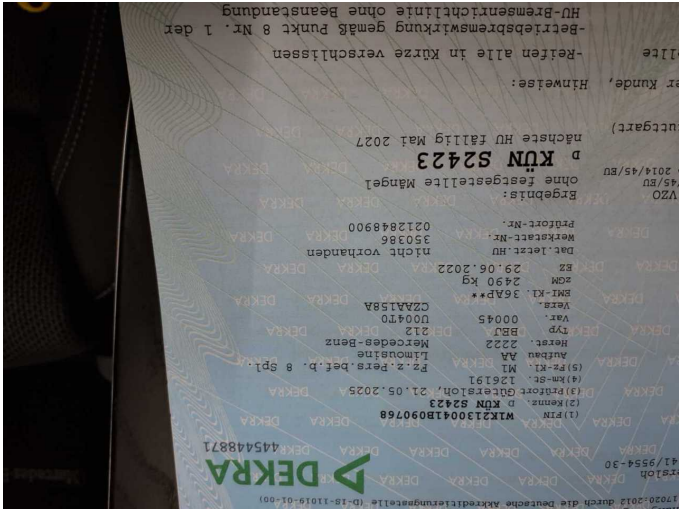


Figure 16: Documents



Figure 17: Additional tyres

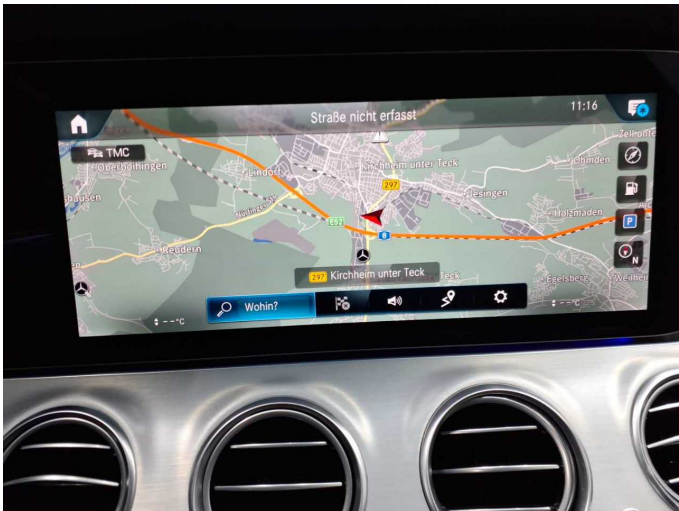


Figure 18: Navigation





Figure 19: Misc.



Figure 20: Misc.



Figure 21: Misc.



Figure 22: Misc.



Figure 23: Misc.



Figure 24: Misc.





Figure 25: Misc.



Figure 26: Misc.

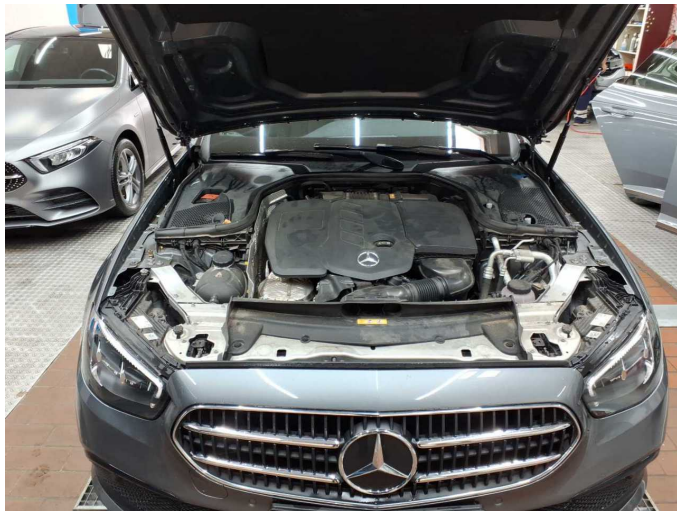


Figure 27: Misc.

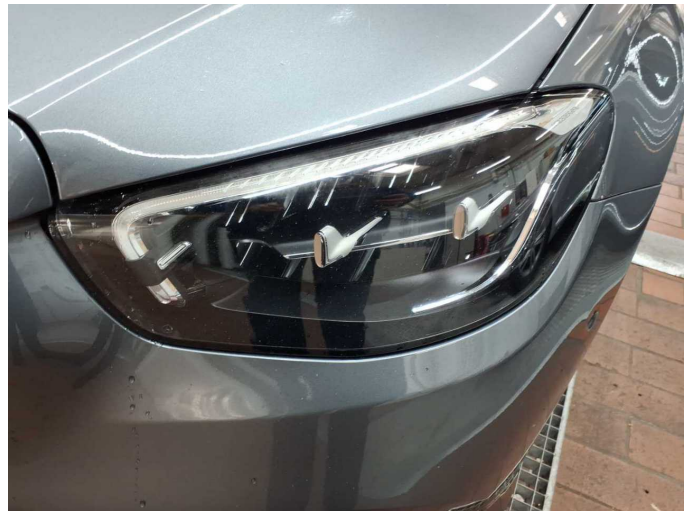


Figure 28: Misc.



Figure 29: Misc.

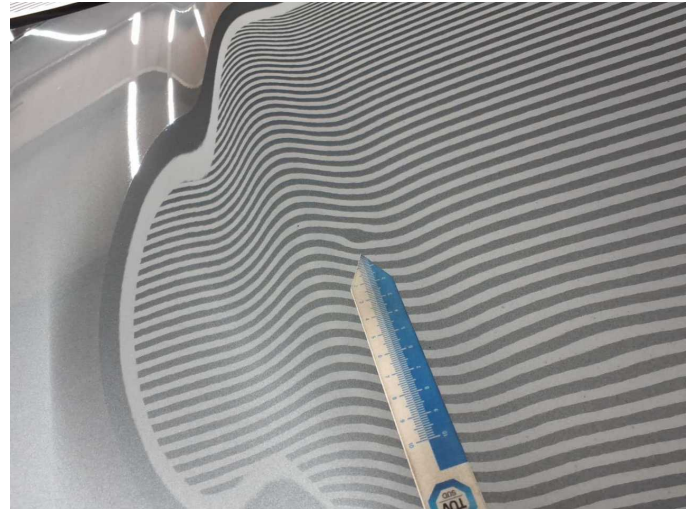


Figure 30: Misc.





**Damage 1:** Bonnet: Bonnet - dent(s) - Smart repair



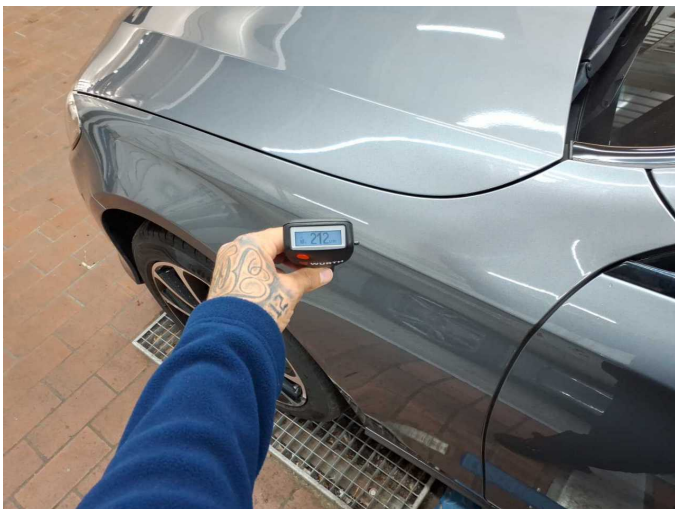
**Damage 1:** Bonnet: Bonnet - dent(s) - Smart repair



**Repainting 1:** Roof rail - left side, Mudguard - left side, Side panel - rear left side



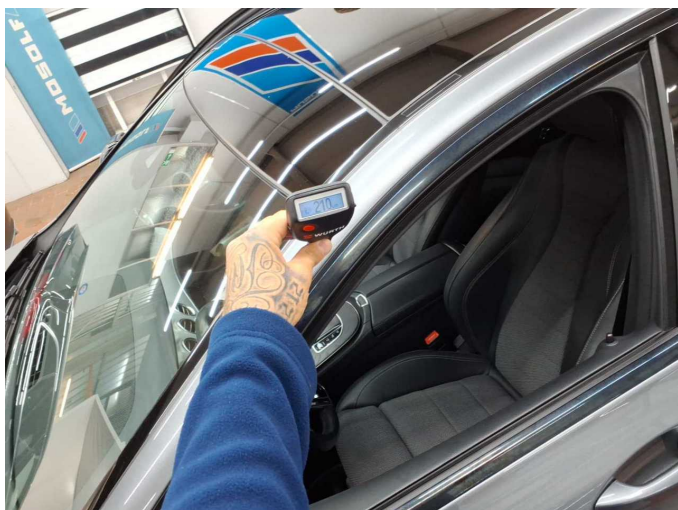
**Repainting 1:** Roof rail - left side, Mudguard - left side, Side panel - rear left side



**Repainting 1:** Roof rail - left side, Mudguard - left side, Side panel - rear left side



**Repainting 1:** Roof rail - left side, Mudguard - left side, Side panel - rear left side



**Repainting 1:** Roof rail - left side, Mudguard - left side, Side panel - rear left side



**Repainting 1:** Roof rail - left side, Mudguard - left side, Side panel - rear left side