



Expertise

Protocol number: 41210521
Order No. / Reference: 24951866
Inspection date: 19 Aug 2025

Manufacturer: Mercedes-Benz
VIN: W1K2130041B089475

Model: E 220 d 9G-TRONIC Avantgarde



Vehicle details	
Manufacturer / Type / Model / Equipment	
Mercedes-Benz E 220 d 9G-TRONIC Avantgarde	
Vehicle Identification number	W1K2130041B089475
Mileage (Read)	127,439 km
First registration	29 Jun 2022
Number of holders	1
Power / Engine displacement	147 kw / 1,993 ccm
Fuel type / Cylinder	Hybrid Diesel / E / 4
Gearbox / Number of gears	Automatic / 9
Type of drive	Rear drive
Type of vehicle	Saloon car
Colour / colour code	HIGHTECHSILBER METALLIC-LACKE
Doors / Seats	5 / 5
Upholstery type	Cloth / leather combination
Colour of upholstery	Grey-Black



Vehicle details

Maintenance booklet / proof	digital proof / complete	Next maintenance in	295 Tag(e)
Key is / should be	2 / 2	FZG documents	ZB#2 (B) was available (copy), ZB#1 (S) was not available
		Letter No.	GJ484187
Previous damage / Accident	None detectable	Repainting	None detectable
Inspection conditions	sufficient	Lifting equipment / pit	yes
Test drive	Not performed	Engine function test	Performed
Manufacturer key number/ type code number	2222 / BEJ 00045		
Emission standard	EURO6;WLTP;AP;PI/CI; M, N1 I	Fine dust sticker	
Permitted total weight	2,410 kg	Empty weight	

Tyres

Mounted tyres

#	Tyre size	Type of tyre	Manufacturer	Tread depth
1)	245/45 R18 100V	Winter tyres on Light alloy	Sonstige	6mm / 6mm
2)	245/45 R18 100V	Winter tyres on Light alloy	Goodyear	6mm / 6mm

Legend: Tread depth information for tires on the left is in the first place, for tires on the right is in the second place on the axle in the direction of travel

Equipment

Standard equipment

- ADAPTIVE BRAKE with hill start assist, pre-filling and dry braking in wet conditions
- Airbag: Automatic passenger airbag deactivation
- Airbag: Sidebag for driver and front passenger
- Ambient lighting with 64 colors and 3 color zones
- Armrest for driver and passenger foldable
- Exterior mirrors left and right, heated and electrically adjustable, painted in body color
- Brake Assist, active
- tachometer
- DYNAMIC SELECT
- Chassis: AGILITY CONTROL chassis with selective damping system and lowering
- Velour floor mats
- Heated rear window with timer control
- KEYLESS-GO start function
- Headrests (5)
- LED high-performance headlights
- Steering column mechanically adjustable in height and length
- Center console piano lacquer look black
- Navigation accessories: Pre-installation for Live Traffic Information
- Package: AVANTGARDE Exterior
- Upholstery: ARTICO man-made leather/Norwich fabric
- Radio: Advanced functions MBUX
- Radio accessories: Digital radio
- Tire pressure monitoring
- Remote Services Plus
- Power steering
- Seats: Front seats electrically adjustable
- Touchpad
- Electronic immobilizer
- Central locking
- AdBlue tank with 23.5 l capacity
- Airbag for driver and front passenger
- Airbag: Kneebag for driver
- Airbag: Windowbags left/right
- Anti-lock braking system (ABS)
- Attention Assist
- Basic services
- On-board computer
- diesel particulate filter
- Third brake light
- Electronic Stability Program (ESP)
- Electric window lifter with comfort operation and anti-pinch protection, 4-way
- Transmission: Automatic 9-speed, 9G-TRONIC
- Interior headliner in neva grey fabric
- THERMATIC automatic climate control
- Paint finish: Uni
- Steering wheel: Multifunction steering wheel in nappa leather with 3-spoke design
- Mercedes-Benz emergency call system
- Center console with spontaneous storage
- Navigation: Hard drive navigation
- Package: Storage package
- Package: Seat comfort
- PRE-SAFE system
- Radio: MBUX multimedia system
- Radio accessories: Communication module (LTE) for the use of Mercedes me connect services
- Windscreen wipers with rain sensor
- Seats: i-Size child seat attachment
- Cruise control
- High-visibility vest for drivers
- Heat-insulating glass green all around
- Decorative elements made of aluminum with light longitudinal grain

Extra equipment

- Center console wood ash black open-pore
- Glazing: Heat-insulating, dark-tinted glass (for the rear side windows and rear window). The dark tint of the rear side windows and rear window emphasizes the sporty and individual look. At the same time, it protects rear passengers and the interior from prying eyes and direct sunlight.
- Heated windscreen washer system (including heated washer fluid reservoir, windscreen washer nozzles and washer fluid hoses)
- Ambient lighting with projection of the brand logo (one LED projector in each front door - takes over the function of the exit lights)
- Decorative elements wood ash black open-pore
- Door sills with Mercedes-Benz lettering, illuminated (With an illuminated "Mercedes-Benz" lettering, the front door sills made of brushed stainless steel set sporty, exclusive highlights. At the same time, they protect the entry area from damage.)
- Elimination of type markings on trunk lid
- Interior headliner fabric black



- | | |
|--|--|
| <ul style="list-style-type: none"> • Package: Business (MBUX High-End Package - Connectivity Package Navigation - Traffic Sign Assistant - Smartphone Integration (Apple CarPlay and Android Auto) - Preparation for digital key handover - Widescreen Cockpit - Wireless charging system for mobile devices - MBUX Augmented Reality for navigation - Heated seats for driver and front passenger - Parking Package with rearview camera - Fuel tank with 66 liters capacity (916) (60 liters for diesel plug-in hybrids).) • Paint finish: metallic • Seats: Seat heating for driver and front passenger (selectable in three levels - Intelligent and comfortable: The seat heating switches back automatically) • Trailer hitch with ESP trailer stabilization (fully electrically foldable and extendable) • Wheels: 45.7 cm (18") light-alloy wheels in 5-twin-spoke design, painted high-gloss black (high-sheen finish - 8 J x 18 ET 43, tire size 245/45 R 18) | <ul style="list-style-type: none"> • Package: Night for AVANTGARDE Exterior (front bumper with high-gloss black trim element - 45.7 cm (18") 5-twin-spoke light-alloy wheels, painted high-gloss black with a high-sheen finish, measuring 245/45 R18 on 8 J x 18 ET 43 - beltline trim strip, window surround, and trim strip in the rear bumper in high-gloss black - exterior mirror housings in high-gloss black - heat-insulating dark-tinted glass) • Package: Parking Package with Rearview Camera (The Parking Package with rearview camera makes it easier to find and select a parking space, as well as to park in and out of parallel and perpendicular parking spaces or garages. The Active Parking Assistant assists the vehicle into parking spaces, including cruise control and automatic gear shifting.) • Seats: Folding seat backrests in the rear |
|--|--|

Brief expert findings

Documents submitted	At the time of the inspection, the registration certificate Part 2 (letter) was available, but the registration certificate Part 1 (certificate) was not. (Copy)
VIN comparison	The vehicle identification number (VIN) was read from the vehicle and its conformity with the submitted documents was verified during the inspection by the undersigned.
Inspection	The inspection conditions were sufficient for the assessment of the vehicle. Lifting equipment and a pit were available for examining the vehicle.
Test drive	No test drive/maneuvering was carried out during the inspection of the vehicle.
Engine function test	An engine test run was performed.

Value reducing factors

No.	Component group	Description
1	Misc.	Main inspection - No evidence - No deduction
2	Misc.	Inspection / maintenance (keine Historie) - No evidence - No deduction
3	Rear bumper	Rear bumper - Scratch(es) - Smart repair
4	Door - front left side	Door - dent(s) - Smart repair
5	Wheel / tyres	Alloy rim - front left side - Scratch(es) - Loss in value
6	Wheel / tyres	Alloy rim - front right side - Scratch(es) - Loss in value
7	Trim / covers	Trim / covers - Scratch(es) - Replace
8	Front bumper	Front bumper - Scratch(es) - Paint



Order/Scope of order

The order was placed to prepare a sales report for the vehicle described. This includes the following:

- Description of core relevant information about the vehicle
- Documentation of equipment features
(Delivery by third-party service providers)
- Documentation of damage, defects, missing parts
- Documentation of previous damage, unrepaired previous damage, repainting
- a brief visual or functional inspection of the equipment details if possible.
(Functional tests of driver assistance systems are not included in the scope of services!)
- a photo documentation of the vehicle

Basis for the order

This product is based on the Alphabet Fuhrpark GmbH guidelines for vehicle returns and valuations. The expert makes the explicit findings in each individual case objectively within the framework of the specified standards based on his or her own expertise.

The vehicle inspection takes place in a disassembled state.

Damage or defects that can only be detected during disassembly/diagnosis work or through advanced knowledge remain within the scope of the prognosis risk. An extended risk exists for concealed defects caused by fraudulent deception and not identifiable by the expert.

Damage or defects resulting from normal use or wear and tear of the vehicle will be accepted according to the applicable standard.

There was no explicit identification or monetary consideration of the expected features within the product.

Features which in their nature and severity slightly exceed normal use but do not constitute unacceptable damage will be documented and identified under signs of use if necessary.

Damage or defects which, according to the underlying standard, can no longer be attributed to normal use or wear and tear are listed in the product under "Depreciating Factors".

Depending on the product specification, a monetary ID can be provided. If this takes place, the costs can be 100% d or pro rata depending on the vehicle's age and mileage.

Previous damages

Apparently, no repaired previous damage could be found on the vehicle.



Figure 1: Diagonal front (left)



Figure 2: Diagonal front (right)



Figure 3: Diagonal rear (left)



Figure 4: Diagonal rear (right)



Figure 5: Interior - front



Figure 6: Interior - rear



Figure 7: Instrument cluster



Figure 8: Instrument panel



Figure 9: interior 360° view



Figure 10: Cargo area



Figure 11: VIN



Figure 12: Mounted tyres

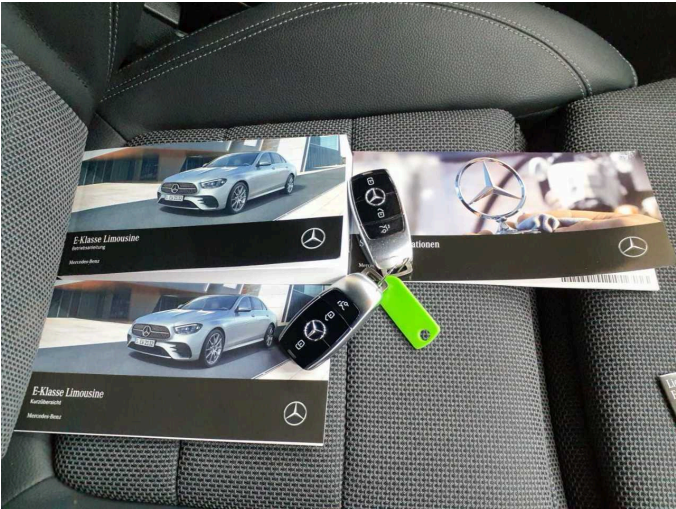


Figure 13: Documents



Figure 14: Navigation



Figure 15: Misc.



Figure 16: Misc.



Figure 17: Misc.



Figure 18: Misc.



Figure 19: Misc.



Figure 20: Misc.



Figure 21: Misc.



Figure 22: Misc.



Figure 23: Misc.



Figure 24: Misc.



Figure 25: Misc.



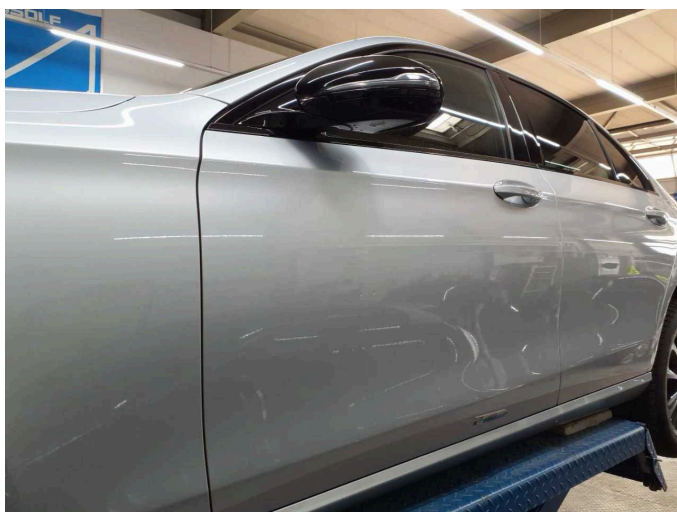
Figure 26: Misc.



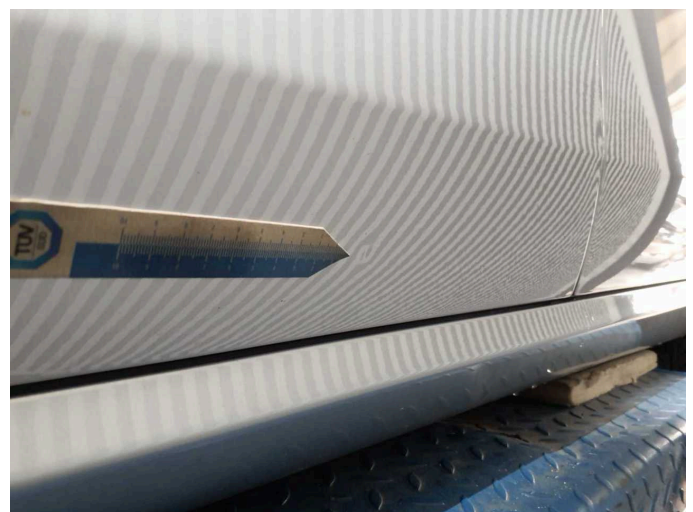
Damage 3: Rear bumper: Rear bumper - Scratch(es) - Smart repair



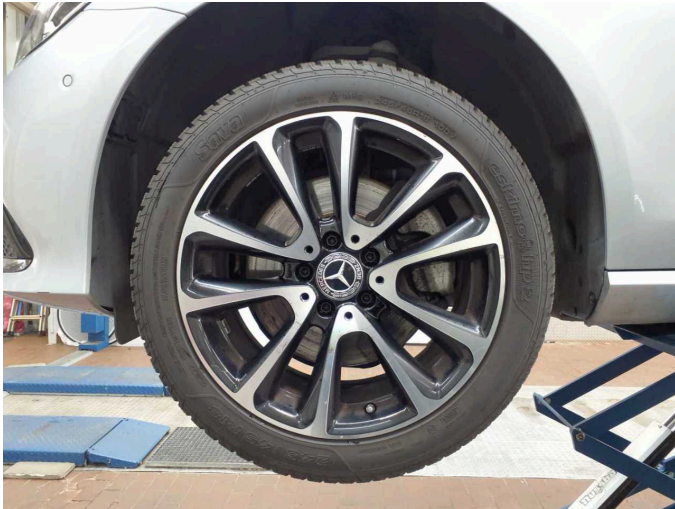
Damage 3: Rear bumper: Rear bumper - Scratch(es) - Smart repair



Damage 4: Door - front left side: Door - dent(s) - Smart repair



Damage 4: Door - front left side: Door - dent(s) - Smart repair



Damage 5: Wheel / tyres: Alloy rim - front left side - Scratch(es) - Loss in value



Damage 5: Wheel / tyres: Alloy rim - front left side - Scratch(es) - Loss in value



Damage 5: Wheel / tyres: Alloy rim - front left side - Scratch(es) - Loss in value



Damage 5: Wheel / tyres: Alloy rim - front left side - Scratch(es) - Loss in value



Damage 6: Wheel / tyres: Alloy rim - front right side - Scratch(es) - Loss in value



Damage 6: Wheel / tyres: Alloy rim - front right side - Scratch(es) - Loss in value



Damage 6: Wheel / tyres: Alloy rim - front right side - Scratch(es) - Loss in value



Damage 7: Trim / covers: Trim / covers - Scratch(es) - Replace



Damage 7: Trim / covers: Trim / covers - Scratch(es) - Replace



Damage 8: Front bumper: Front bumper - Scratch(es) - Paint



Damage 8: Front bumper: Front bumper - Scratch(es) - Paint



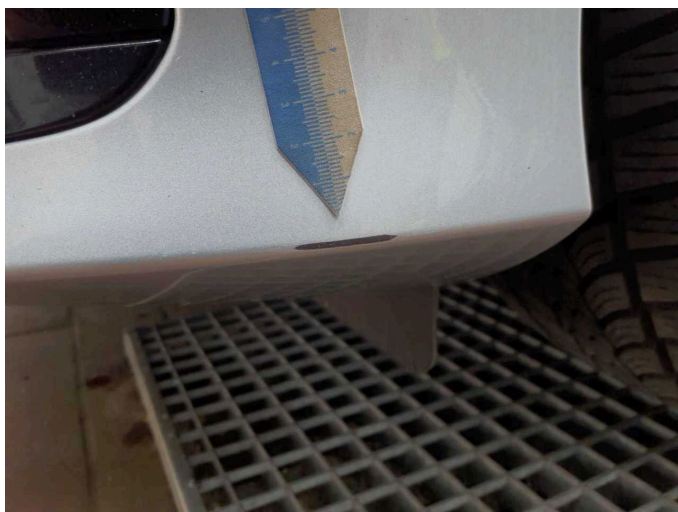
Damage 8: Front bumper: Front bumper - Scratch(es) - Paint



Damage 8: Front bumper: Front bumper - Scratch(es) - Paint



Damage 8: Front bumper: Front bumper - Scratch(es) - Paint



Damage 8: Front bumper: Front bumper - Scratch(es) - Paint