



Expertise

Protocol number: 41431224
Order No. / Reference: 25178960
Inspection date: 9 Sept 2025

Manufacturer: Mercedes-Benz

Model: C 200 T 9G-TRONIC Avantgarde

VIN: W1K2062421F011939



| Vehicle details | |
|--|-----------------------------|
| Manufacturer / Type / Model / Equipment | |
| Mercedes-Benz C 200 T 9G-TRONIC Avantgarde | |
| Vehicle Identification number | W1K2062421F011939 |
| Mileage (Read) | 29,579 km |
| First registration | 14 Jul 2021 |
| Number of holders | 1 |
| Power / Engine displacement | 150 kw / 1,496 ccm |
| Fuel type / Cylinder | Hybrid Petrol / E / 4 |
| Gearbox / Number of gears | Automatic / 9 |
| Type of drive | Rear drive |
| Type of vehicle | Station wagon |
| Colour / colour code | Selenitgrau metallic |
| Doors / Seats | 5 / 5 |
| Upholstery type | Cloth / leather combination |
| Colour of upholstery | Black-Grey |



Vehicle details

| | | | |
|--|------------------------------|--------------------------------|---|
| Maintenance booklet / proof | digital proof / complete | Next maintenance in | 341 Tag(e) |
| Last maintenance on / at | 08/2025 at 29,457 km | | |
| Key is / should be | 2 / 2 | FZG documents | ZB#2 (B) was available (copy), ZB#1 (S) was not available |
| | | Letter No. | GC639252 |
| Previous damage / Accident | Detectable | Repainting | None detectable |
| Inspection conditions | sufficient | Lifting equipment / pit | yes |
| Test drive | Not performed | Engine function test | Performed |
| Manufacturer key number/ type code number | 2222 / BAL 00025 | | |
| Emission standard | EURO6;WLTP;AP;PI/CI; M, N1 I | Fine dust sticker | |
| Permitted total weight | 2,325 kg | Empty weight | |

Tyres

Mounted tyres

| # | Tyre size | Type of tyre | Manufacturer | Tread depth |
|----|----------------|-----------------------------|--------------|-------------|
| 1) | 225/50 R17 94Y | Summer tyres on Light alloy | Bridgestone | 5mm / 5mm |
| 2) | 225/50 R17 94Y | Summer tyres on Light alloy | Bridgestone | 5mm / 5mm |

Additional tyres

| # | Tyre size | Type of tyre | Manufacturer | Tread depth |
|----|----------------|-----------------------------|--------------|-------------|
| 1) | 225/50 R17 98V | Winter tyres on Light alloy | Goodyear | 6mm / 6mm |
| 2) | 225/50 R17 98V | Winter tyres on Light alloy | Goodyear | 6mm / 6mm |

Replacement

| Typ | Tyre size | Type of tyre | Manufacturer | Tread depth |
|-----|-----------|-------------------------|--------------|-------------|
| | Tirefit | Expiration date 07/2026 | | |

Legend: Tread depth information for tires on the left is in the first place, for tires on the right is in the second place on the axle in the direction of travel



Equipment

Standard equipment

- Airbag for driver and front passenger
- Airbag: Center airbag
- Airbag: Windowbag for driver and front passenger
- Basic services
- Roof rails in polished aluminum
- DYNAMIC SELECT
- ECO start-stop function
- 4-way electric window lifter
- Speed Limit Assistant
- Rear window wiper
- Heated rear window
- ISOFIX child seat attachment with Top Tether in the rear
- Mechanical child safety lock for the rear doors
- Front headrests
- Load compartment cover including EASY-PACK safety net
- Mercedes-Benz emergency call system
- Center console in high-gloss black
- Package: Storage
- Package: Interior lighting package
- Radio: Advanced functions MBUX
- Radio accessories: Communication module (LTE) for the use of Mercedes me connect services
- Remote Services Plus
- Power steering
- Lane Keeping Assist, active
- Fully digital instrument display
- Electronic immobilizer
- Decorative elements diamond look silver-grey
- Airbag: Automatic passenger airbag deactivation
- Airbag: Sidebag for driver and front passenger
- Ambient lighting with 64 light colors
- Brake assist, active
- Double cup holders at the front
- EASY-PACK tailgate
- Electronic Stability Program (ESP)
- Velour floor mats
- Transmission: Automatic 9-speed, 9G-TRONIC
- Rear bumper in body color
- Interior headliner fabric crystal grey
- KEYLESS-GO start function
- Rear headrests (3)
- Fuel tank with larger capacity
- Steering wheel: Multifunction sports steering wheel in leather
- Gasoline particulate filter
- Package: AVANTGARDE Exterior
- Upholstery: ARTICO imitation leather/fabric
- Radio accessories: Digital radio (DAB)
- Radio accessories: Central display
- Tire pressure monitoring (TPMS)
- Windscreen wipers with rain sensor
- Seats: Folding seat backrests in the rear
- Cruise control
- High-visibility vest for drivers
- Central locking with remote control

Extra equipment

- Airbag: Sidebags in the rear
- Paint finish: metallic
- Package: Advanced Infotainment Package (MBUX Navigation Premium (hard drive navigation, pre-installation for Live Traffic Information), Traffic Sign Assistant, Smartphone Integration (wirelessly connects the mobile phone to the multimedia system via Apple CarPlay and Android Auto), Wireless charging system for mobile devices in the front, Driver Display - 31.2 cm (12.3") large LCD color display, Central Display - 30.2 cm (11.9"), touch display with LCD technology)
- THERMATIC automatic climate control with 2 climate zones (controlled via the central display or the climate control unit in the center console; sensor system for recording, for example, interior/ outside temperature, sunlight, humidity, and dew point; automatic air recirculation (only in conjunction with navigation system); ventilation system consisting of: 3 center vents in the center level and 2 side vents; fine dust activated carbon filter for filtering dust, soot, and pollen; dew point sensor; residual heat function for efficient use of engine waste heat)



- Package: Advanced Lighting Package (DIGITAL LIGHT: -HD system with projection module (more than 1.3 million pixels per headlight) and background module MULTIBEAM LED -Adaptive Highbeam Assist Plus -ULTRA RANGE high beam with a range of more than 600 m -Topography compensation -Cornering light with roundabout and intersection function -Active cornering light with predictive control -Extended fog light, city light, country road light, motorway light, motorway high beam and bad weather light)
- Package: High-End Comfort Package (Seat heating for driver and front passenger - Memory Package: Driver and front passenger seats, steering column, and exterior mirrors electrically adjustable and memory-enabled; seat fore/aft position and headrest height also electrically adjustable; 3 memory settings for driver and front passenger; 4-way lumbar support for driver and front passenger; seat cushion depth adjustment with gap-free cushion; PRE-SAFE positioning function for the front passenger seat)
- Package: Park (12 ultrasonic sensors - Rear view camera - Active Parking Assist with PARKTRONIC: detects free parking spaces, assisted parking, visual and acoustic warnings, display of camera and ultrasonic data on the media display - Cross traffic warning: can provide a visual and acoustic warning when cross traffic is detected while reversing out of a parking space and, if necessary, automatically initiate emergency braking - Reverse maneuvering braking: can trigger a braking action - Drive-away assistance)
- Package: USB (2 USB-C ports under the front center armrest, suitable for data transfer)
- Wheels: 43.2 cm (17") 5-spoke alloy wheels (black painted and high-sheen with 225/50 R 17 on 7 J x 17 ET 44.5)
- Heat-insulating dark tinted glass
- Package: High-End Assistance Package (Driving Assistance Package Plus: Active Distance Assist DISTRONIC Active Speed Limit Assist Active Traffic Jam Assist Active Steering Assist Active Lane Change Assist Active Emergency Stop Assist Emergency Lane Function Active Brake Assist with vehicle, bicycle and pedestrian detection Intersection Function Turning Function End of Traffic Jam Emergency Braking Function Evasive Steering Assist Active Lane Keeping Assist Active Blind Spot Assist Exit Warning Function PRE-SAFE PLUS PRE-SAFE Impulse Side)
- Package: Night (for T-model with Avantgarde exterior) (Radiator grille: slats in high-gloss black and decorative trim in high-gloss chrome (17") light alloy wheels in 5-spoke design, black lacquered and high-sheen with 225/50 R17 on 7Jx17 ET44, 5 front apron with decorative trim (wing) in high-gloss black, rear bumper with decorative trim (wing) in high-gloss black, beltline trim strip and window surround in high-gloss black, exterior mirror housings painted in high-gloss black, heat-insulating dark-tinted glass at the rear (from B-pillar), roof rails in black.)
- Package: Start (Advanced Infotainment Package (D2I): -MBUX Navigation Premium (PBG) -Driver display 12.3" (464) and central display 11.9" (868) -Traffic Sign Assistant (513) -Wireless charging system for mobile devices in the front (897) -Smartphone Integration (14U) Parking Package (D1P): -Parking Package with rear view camera (P44) Advanced Comfort Package (D2K): -Seat heating (873) and seat comfort package (P65) Mirror package (P49) USB package (75B) Large fuel tank (916) Assistance Package (D1F): - Blind spot assistant (234))
- Seats: Comfort seats
- TIREFIT with tire inflation compressor
- Elimination of type markings on trunk lid

Brief expert findings

| | |
|----------------------|--|
| Documents submitted | At the time of the inspection, the registration certificate Part 2 (letter) was available, but the registration certificate Part 1 (certificate) was not. (Copy) |
| VIN comparison | The vehicle identification number (VIN) was read from the vehicle and its conformity with the submitted documents was verified during the inspection by the undersigned. |
| Inspection | The inspection conditions were sufficient for the assessment of the vehicle. Lifting equipment and a pit were available for examining the vehicle. |
| Test drive | No test drive/maneuvering was carried out during the inspection of the vehicle. |
| Engine function test | An engine test run was performed. |

Value reducing factors

| No. | Component group | Description |
|-----|------------------------------|---|
| 1 | Side panel - rear right side | Side panel - Scratch(es) - Smart repair |
| 2 | Door - front right side | Door - Dent / paintcoat damage - Smart repair |
| 3 | Door - rear right side | Door - Dent / paintcoat damage - Repair and paint |
| 4 | Sill - right side | Trim - Deformed - Replace |

Wear and tear



| No. | Component group | Description |
|-----|-----------------------------|--|
| 1 | Side panel - rear left side | Side panel - Stone chips - No deduction |
| 2 | Mudguard - right side | Mudguard - right side - Stone chips - No deduction |

The vehicle shows signs of wear commensurate with its age and use.

Previous damages

| No. | Previous damage | Extent of damage (Net) |
|-----|------------------------------------|------------------------|
| 1 | Front, Provided by user / customer | 2.277,41 € |

Order/Scope of order

The order was placed to prepare a sales report for the vehicle described. This includes the following:

- Description of core relevant information about the vehicle
- Documentation of equipment features
(*Delivery by third-party service providers*)
- Documentation of damage, defects, missing parts
- Documentation of previous damage, unrepaired previous damage, repainting
- a brief visual or functional inspection of the equipment details if possible.
(*Functional tests of driver assistance systems are not included in the scope of services!*)
- a photo documentation of the vehicle

Basis for the order

This product is based on the Alphabet Fuhrpark GmbH guidelines for vehicle returns and valuations. The expert makes the explicit findings in each individual case objectively within the framework of the specified standards based on his or her own expertise.

The vehicle inspection takes place in a disassembled state.

Damage or defects that can only be detected during disassembly/diagnosis work or through advanced knowledge remain within the scope of the prognosis risk. An extended risk exists for concealed defects caused by fraudulent deception and not identifiable by the expert.

Damage or defects resulting from normal use or wear and tear of the vehicle will be accepted according to the applicable standard.

There was no explicit identification or monetary consideration of the expected features within the product.

Features which in their nature and severity slightly exceed normal use but do not constitute unacceptable damage will be documented and identified under signs of use if necessary.

Damage or defects which, according to the underlying standard, can no longer be attributed to normal use or wear and tear are listed in the product under "Depreciating Factors".

Depending on the product specification, a monetary ID can be provided. If this takes place, the costs can be 100% d or pro rata depending on the vehicle's age and mileage.

Previous damages

According to available information previous damages were repaired at the vehicle. Traces of repairs, which allow conclusions about the area of repair, were not recognizable during the inspection.

Comments

Wartungshistorie gemäß Auftraggeber Informationen.

- Der 2.Radsatz gehört nicht zur Ausstattung und wurde nicht in der Bewertung berücksichtigt.



Figure 1: Diagonal front (left)



Figure 2: Diagonal front (right)



Figure 3: Diagonal rear (left)



Figure 4: Diagonal rear (right)



Figure 5: Interior - front



Figure 6: Interior - rear



Figure 7: Instrument cluster



Figure 8: Instrument panel



Figure 9: Interior 360° view



Figure 10: Cargo area



Figure 11: VIN



Figure 12: Mounted tyres



Figure 13: Documents

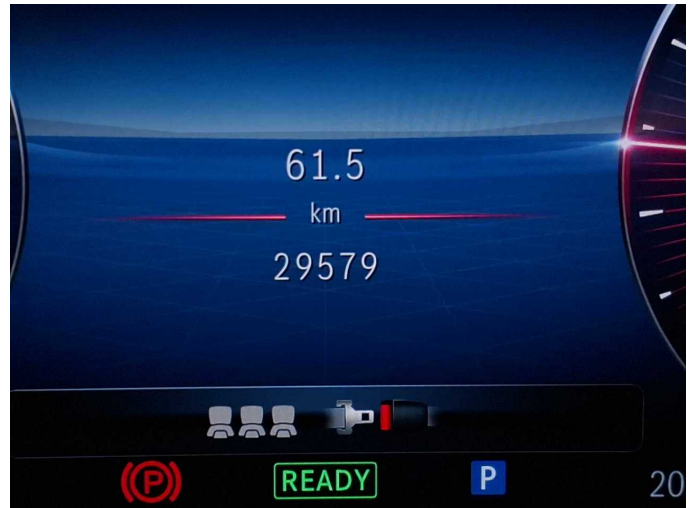


Figure 14: Documents



Figure 15: Documents



Figure 16: Additional tyres



Figure 17: Additional tyres



Figure 18: Navigation



Figure 19: Misc.



Figure 20: Misc.



Figure 21: Misc.



Figure 22: Misc.



Figure 23: Misc.



Figure 24: Misc.



Figure 25: Misc.



Figure 26: Misc.



Figure 27: Misc.



Figure 28: Misc.



Figure 29: Misc.



Figure 30: Misc.



Figure 31: Misc.



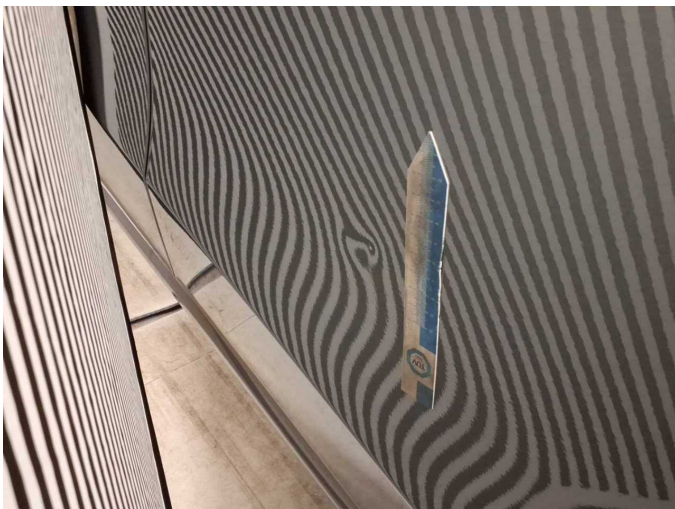
Damage 1: Side panel - rear right side: Side panel - Scratch(es) - Smart repair



Damage 1: Side panel - rear right side: Side panel - Scratch(es) - Smart repair



Damage 2: Door - front right side: Door - Dent / paintcoat damage - Smart repair



Damage 2: Door - front right side: Door - Dent / paintcoat damage - Smart repair



Damage 3: Door - rear right side: Door - Dent / paintcoat damage - Repair and paint



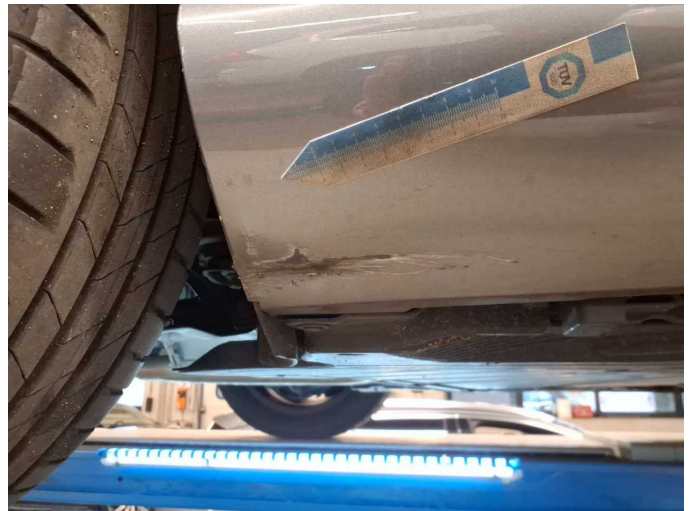
Damage 3: Door - rear right side: Door - Dent / paintcoat damage - Repair and paint



Damage 3: Door - rear right side: Door - Dent / paintcoat damage - Repair and paint



Damage 4: Sill - right side: Trim - Deformed - Replace



Damage 4: Sill - right side: Trim - Deformed - Replace



Damage 4: Sill - right side: Trim - Deformed - Replace



Wartungshistorie

(gemäß Auftraggeber Informationen)

Fahrgestellnummer: W1K2062421F011939

Hersteller / Modell: MERCEDES-BENZ MB C 200 T 9G-TRONIC Avantgarde

| Datum | KM-Stand | Beschreibung |
|------------|----------|--------------------------|
| 16.08.2025 | 29.457 | Regelwartungsdienst |
| 22.07.2024 | 20.723 | HU + AU |
| 18.07.2024 | 21.458 | Regelwartungsdienst |
| 31.01.2024 | 15.837 | Systemtest/Eigendiagnose |
| 18.07.2023 | 12.145 | Regelwartungsdienst |
| 05.07.2022 | 5.436 | Regelwartungsdienst |