



Expertise

Protocol number: 41275631  
Order No. / Reference: 25005895  
Inspection date: 28 Aug 2025

Manufacturer: Mercedes-Benz

Model: C 220 d T 9G-TRONIC Avantgarde

VIN: W1K2062041F064250



| Vehicle details                              |                                |
|--|--------------------------------|
| Manufacturer / Type / Model / Equipment      |                                |
| Mercedes-Benz C 220 d T 9G-TRONIC Avantgarde |                                |
| Vehicle Identification number                | W1K2062041F064250              |
| Mileage (Read)                               | 82,310 km                      |
| First registration                           | 21 Jul 2022                    |
| Number of holders                            | 1                              |
| Power / Engine displacement                  | 147 kw / 1,993 ccm             |
| Fuel type / Cylinder                         | Hybrid Diesel / E / 4          |
| Gearbox / Number of gears                    | Automatic / 9                  |
| Type of drive                                | Rear drive                     |
| Type of vehicle                              | Station wagon                  |
| Colour / colour code                         | OBSIDIANSCHWARZ - METALLICLACK |
| Doors / Seats                                | 5 / 5                          |
| Upholstery type                              | Cloth / leather combination    |
| Colour of upholstery                         | Black-Anthracite               |
| Vehicle with smoke odor                      | no                             |



## Vehicle details

|  |                              |                                |   |
|--|------------------------------|--------------------------------|---|
| <b>Maintenance booklet / proof</b>               | Non-existent                 | <b>Next maintenance in</b>     | 214 Tag(e)  |
| <b>Key is / should be</b>                        | 2 / 2                        | <b>FZG documents</b>           | ZB#2 (B) was available (copy), ZB#1 (S) was not available |
|  |                              | <b>Letter No.</b>              | GJ484128  |
| <b>Previous damage / Accident</b>                | Detectable                   | <b>Repainting</b>              | None detectable   |
| <b>Inspection conditions</b>                     | sufficient                   | <b>Lifting equipment / pit</b> | yes   |
| <b>Test drive</b>                                | Not performed                | <b>Engine function test</b>    | Performed   |
| <b>Manufacturer key number/ type code number</b> | 2222 / AYH 00145             |                                |   |
| <b>Emission standard</b>                         | EURO6;WLTP;AP;PI/CI; M, N1 I | <b>Fine dust sticker</b>       |   |
| <b>Permitted total weight</b>                    | 2,400 kg                     | <b>Empty weight</b>            |   |

## Tyres

### Mounted tyres

| #  | Tyre size      | Type of tyre                | Manufacturer | Tread depth |
|----|----------------|-----------------------------|--------------|-------------|
| 1) | 225/50 R17 98Y | Summer tyres on Light alloy | Hankook      | 5mm / 5mm   |
| 2) | 225/50 R17 98Y | Summer tyres on Light alloy | Hankook      | 5mm / 5mm   |

### Additional tyres

| #  | Tyre size      | Type of tyre                     | Manufacturer | Tread depth |
|----|----------------|----------------------------------|--------------|-------------|
| 1) | 225/50 R17 98V | Winter tyres (Without wheel rim) | Fulda        | 8mm / 8mm   |
| 2) | 225/50 R17 98V | Winter tyres (Without wheel rim) | Fulda        | 8mm / 8mm   |

**Legend:** Tread depth information for tires on the left is in the first place, for tires on the right is in the second place on the axle in the direction of travel

## Equipment

### Standard equipment

- Airbag for driver and front passenger
- Airbag: Center airbag
- Airbag: Sidebag for driver and front passenger (combined thorax/pelvis bag)
- Airbag: Windowbag for driver and front passenger
- Ambient lighting with 64 light colors
- Exterior mirrors left and right heated and electrically adjustable
- Brake assist, active
- Roof rails in polished aluminum
- diesel particulate filter
- DYNAMIC SELECT (consisting of driving programs: Comfort, Sport, Eco mode)
- ECO start-stop function
- 4-way electric window lifter
- Velour floor mats
- Transmission: Automatic 9-speed, 9G-TRONIC
- Rear window wiper
- Heated rear window
- ISOFIX child seat attachment with Top Tether in the rear
- KEYLESS-GO start function
- Rear headrests (3)
- Load compartment cover including EASY-PACK safety net
- Steering wheel: Multifunction sports steering wheel in leather (sporty 3-spoke design - leather trim - black grained shift paddles - control via touch panels: left: driver display, cruise control and limiter or Active Distance Assist DISTRONIC; right: MBUX multimedia system (e.g., audio volume and track selection, telephony and navigation), touch sensitivity adjustable via central display)
- Mercedes-Benz emergency call system (can provide a decisive time advantage in an emergency. A communication module with its own SIM card automatically triggers an emergency call when an accident is detected, which can shorten the time until emergency services arrive. The emergency call can also be triggered manually to organize assistance.)
- Package: AVANTGARDE Exterior (radiator grille with integrated Mercedes star and chrome-plated louvre, chrome radiator grille frame, 43.2 cm (17") 5-spoke alloy wheels, high-gloss black paint and high-gloss rims, 225/50 R 17 on 7 J x 17 ET 44.5, dynamic front bumper with centrally positioned decorative trim in high-gloss chrome and diamond-pattern air intakes in black, AGILITY CONTROL suspension with 15 mm lowering and selective damping system, bar on the rear side windows in high-gloss black)
- Upholstery: ARTICO imitation leather/fabric
- Airbag: Automatic passenger airbag deactivation (The system automatically deactivates the passenger airbag as soon as it detects a rear-facing child seat or registers that the passenger seat is unoccupied. A transponder in the child seat is not necessary. If it is detected that an adult is sitting down, the airbag is automatically activated and the risk of incorrect operation is reduced.)
- Basic services (breakdown management, maintenance management, accident management, telediagnosis, remote vehicle diagnosis)
- Double cup holders at the front
- EASY-PACK tailgate (with electric operation for opening and closing)
- Electronic Stability Program (ESP) (including anti-lock braking system (ABS) and traction control (ASR))
- Speed Limit Assistant (The Speed Limit Assistant detects and displays speed limits.)
- Rear bumper in body color (rear bumper painted in body color with centrally positioned decorative panel (wing) in glossy chrome)
- Mechanical child safety lock for the rear doors
- Front headrests
- LED High Performance Headlights (The elements of the LED High Performance Headlights: - Torch and trifunctional light guide for daytime running lights, position lights, and direction indicators - Multi-chamber reflector system with 4 individual reflectors each) for low beam and high beam. The elements of the rear lights in LED technology: - All lighting functions in full LED technology - Tail light - Brake light and parking light - Rear fog light (left-side only) - Direction indicator - Reversing light - 3rd brake light)
- Center console in high-gloss black
- Package: Storage (storage compartment with net on the left side of the cargo area - double cup holder in the center console for 2 x 750 ml - rubber strap on the right side of the cargo area - folding box under the cargo floor - 1 additional bag hook on the right side of the cargo area - recess including storage tray on the right side of the cargo area - map pockets on the backs of the front seats - reversible mat in the trunk floor)
- Package: Interior Lighting Package (Illuminated glove compartment - Illumination of the Wireless Mobile Interface or the storage compartment for mobile phones - Illumination of the storage compartment in the center console or the double cup holders - Illumination of the storage compartment under the center console armrest - Two vanity lights in front - Two reading lights in the overhead control panel - Two reading lights in the interior mirror in conjunction with the mirror P - Two reading lights and interior light function in the grab handles in the rear - Illumination of the trunk or cargo area)



- Radio: Advanced MBUX functions (personalization (profiles) and prediction functions - MBUX voice assistant "LINGUATRONIC" with natural language understanding - activation via Hey Mercedes - MBUX voice assistant learning function through connection to a cloud-based online dictionary, Mercedes me connect service available free of charge for 3 years from activation - Wi-Fi hotspot - Internet radio)
- Radio accessory: Communication module (LTE) for using Mercedes me connect services (The communication module with a vehicle-mounted, LTE-capable SIM card offers you added convenience and safety. It continuously connects you to your vehicle—and the vehicle to infrastructure such as the Mercedes-Benz server or the internet. This allows you to use services such as Live Traffic Information from Mercedes me connect.)
- Windscreen wipers with rain sensor
- Power steering
- Seats: Folding seat backrests in the rear
- Lane Keeping Assist, active
- Cruise control
- High-visibility vest for drivers
- Electronic immobilizer
- Decorative elements diamond look silver-grey

#### Extra equipment

- Chassis: Comfort chassis
- THERMATIC automatic climate control with 2 climate zones (controlled via the central display or the climate control unit in the center console; sensor system for recording, for example, interior/ outside temperature, sunlight, humidity, and dew point; automatic air recirculation (only in conjunction with navigation system); ventilation system consisting of: 3 center vents in the center level and 2 side vents; fine dust activated carbon filter for filtering dust, soot, and pollen; dew point sensor; residual heat function for efficient use of engine waste heat)
- Package: Business (for Avantgarde Exterior (P15) or AMG Line Exterior (P31)) (Mirror Package: Electrically folding exterior mirrors, automatic dimming function, ambient lighting - with projection of the Mercedes-Benz logo - Advanced Comfort Package: Seat heating for driver and front passenger, 4-way lumbar support, Seat Comfort Package - Parking Package: Parking package with rearview camera - Infotainment Package: MBUX Navigation Premium, Traffic Sign Assistant, Smartphone Integration - Fuel tank with larger capacity)
- Package: Park (12 ultrasonic sensors - Rear view camera - Active Parking Assist with PARKTRONIC: detects free parking spaces, assisted parking, visual and acoustic warnings, display of camera and ultrasonic data on the media display - Cross traffic warning: can provide a visual and acoustic warning when cross traffic is detected while reversing out of a parking space and, if necessary, automatically initiate emergency braking - Reverse maneuvering braking: can trigger a braking action - Drive-away assistance)

- Radio: MBUX (fully digital instrument display with 26 cm (10.25") LCD color display and a resolution of 1,440 x 540 pixels - Bluetooth telephony / audio - Wi-Fi hotspot)
- Radio accessories: Digital radio (DAB)
- Radio accessories: Central display (high-resolution, slightly angled central display with a 24 cm (9.5") screen diagonal, with MBUX multimedia system - touch display with LCD technology)
- Tire pressure monitoring (TPMS)
- Remote Services Plus (Communication module - Mercedes me Services, remote vehicle status query, programming of auxiliary heating/ventilation, remote door locking and unlocking, sunroof/ windows with remote locking and opening including ventilation radio, personalized vehicle location, vehicle tracking, geographic vehicle monitoring, parking service monitoring, location function (Remote Vehicle Finder), notification when driving at speed, Send2Car function)
- Central locking with remote control

- Interior headliner fabric black
- Paint finish: metallic
- Center console diamond look silver gray
- Package: Advanced Comfort Package (Seat heating for driver and front passenger - Seat Comfort Package: -Various electric and manual adjustment options for the front seats to adapt to the specific body and comfort requirements of the driver and front passenger - Electro-pneumatic 4-way lumbar support and lateral support adjustment with seat controls -Electric seat cushion tilt adjustment - Electric height adjustment -Electric backrest adjustment -Electric seat cushion depth adjustment -Mechanical fore/aft adjustment - Mechanical headrest adjustment)
- Package: Infotainment package (MBUX Navigation Premium (hard drive navigation, pre-installation for Live Traffic Information) Traffic Sign Assistant Smartphone Integration (connects the mobile phone wirelessly to the multimedia system via Apple CarPlay and Android Auto))
- Package: Night (for T-model with Avantgarde exterior) (Radiator grille: slats in high-gloss black and decorative trim in high-gloss chrome (17") light alloy wheels in 5-spoke design, black lacquered and high-sheen with 225/50 R17 on 7Jx17 ET44, 5 front apron with decorative trim (wing) in high-gloss black, rear bumper with decorative trim (wing) in high-gloss black, beltline trim strip and window surround in high-gloss black, exterior mirror housings painted in high-gloss black, heat-insulating dark-tinted glass at the rear (from B-pillar), roof rails in black.)



- Wheels: 43.2 cm (17") 5-spoke alloy wheels (black painted and high-sheen with 225/50 R 17 on 7 J x 17 ET 44.5)
- Heat-insulating dark tinted glass
- Radio accessories: Advanced sound system (with 9 speakers and 225 watts of system power)
- Sunroof: Electric panoramic sunroof
- Seats: Comfort seats
- Elimination of type markings on trunk lid

## Brief expert findings

|                      |  |
|----------------------|--|
| Documents submitted  | At the time of the inspection, the registration certificate Part 2 (letter) was available, but the registration certificate Part 1 (certificate) was not. (Copy)         |
| VIN comparison       | The vehicle identification number (VIN) was read from the vehicle and its conformity with the submitted documents was verified during the inspection by the undersigned. |
| Inspection           | The inspection conditions were sufficient for the assessment of the vehicle.<br>Lifting equipment and a pit were available for examining the vehicle.                    |
| Test drive           | No test drive/maneuvering was carried out during the inspection of the vehicle.  |
| Engine function test | An engine test run was performed.  |

## Value reducing factors

| No. | Component group      | Description                                     |
|-----|----------------------|---|
| 1   | Boot lid / rear door | Boot lid - dent(s) - Smart repair               |
| 2   | Front bumper         | Front bumper (Leiste) - Broken / torn - Replace |
| 3   | Wheel / tyres        | Tyre - front right side - Damaged - Replace     |
| 4   | Rear bumper          | Rear bumper - Scratch(es) - Smart repair        |

## Wear and tear

| No. | Component group | Description   |
|-----|-----------------|---|
| 1   | Misc.           | Inspection / maintenance - No evidence - No deduction |
| 2   | Body            | Body - Stone chips - No deduction                     |
| 3   | Body            | Body - Scratch(es) - No deduction                     |
| 4   | Vehicle glazing | Windscreen - Stone chips - No deduction               |

The vehicle shows signs of wear commensurate with its age and use.

## Previous damages

| No. | Previous damage                                      | Extent of damage (Net) |
|-----|--|------------------------|
| 1   | Front, Provided by user / customer, from 15 Nov 2022 | 3.165,31 €             |

## Order/Scope of order

The order was placed to prepare a sales report for the vehicle described. This includes the following:

- Description of core relevant information about the vehicle
- Documentation of equipment features  
(Delivery by third-party service providers)
- Documentation of damage, defects, missing parts
- Documentation of previous damage, unrepaired previous damage, repainting
- a brief visual or functional inspection of the equipment details if possible.  
(Functional tests of driver assistance systems are not included in the scope of services!)
- a photo documentation of the vehicle



## Basis for the order

This product is based on the Alphabet Fuhrpark GmbH guidelines for vehicle returns and valuations. The expert makes the explicit findings in each individual case objectively within the framework of the specified standards based on his or her own expertise.

The vehicle inspection takes place in a disassembled state.

Damage or defects that can only be detected during disassembly/diagnosis work or through advanced knowledge remain within the scope of the prognosis risk. An extended risk exists for concealed defects caused by fraudulent deception and not identifiable by the expert.

Damage or defects resulting from normal use or wear and tear of the vehicle will be accepted according to the applicable standard.

There was no explicit identification or monetary consideration of the expected features within the product.

Features which in their nature and severity slightly exceed normal use but do not constitute unacceptable damage will be documented and identified under signs of use if necessary.

Damage or defects which, according to the underlying standard, can no longer be attributed to normal use or wear and tear are listed in the product under "Depreciating Factors".

Depending on the product specification, a monetary ID can be provided. If this takes place, the costs can be 100% d or pro rata depending on the vehicle's age and mileage.

## Previous damages

According to available information previous damages were repaired at the vehicle. Traces of repairs, which allow conclusions about the area of repair, were not recognizable during the inspection.

## Comments

Das Fahrzeug befand sich zum Besichtigungszeitpunkt in beschädigten, nicht demontierten Zustand. Schadenausweitung möglich, Zusatzkosten können entstehen.





**Figure 1:** Diagonal front (left)



**Figure 2:** Diagonal front (right)



**Figure 3:** Diagonal rear (left)



**Figure 4:** Diagonal rear (right)



**Figure 5:** Interior - front



**Figure 6:** Interior - rear





Figure 7: Instrument cluster



Figure 8: Instrument panel



Figure 9: interior 360° view



Figure 10: Cargo area



Figure 11: VIN



Figure 12: Mounted tyres



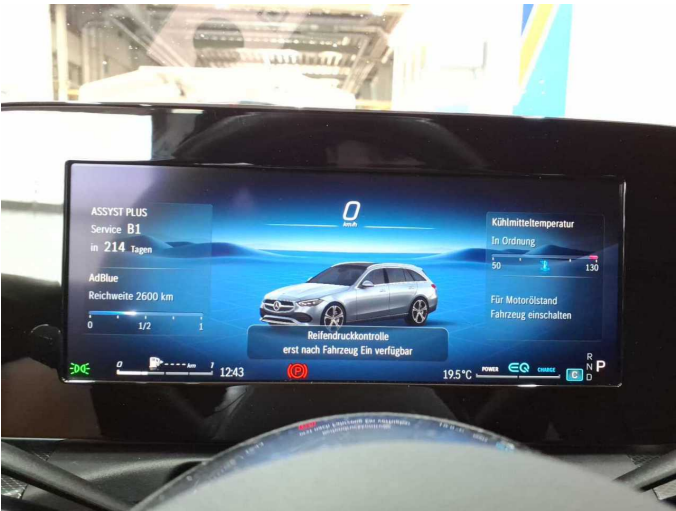


Figure 13: Documents



Figure 14: Documents



Figure 15: Additional tyres



Figure 16: Navigation

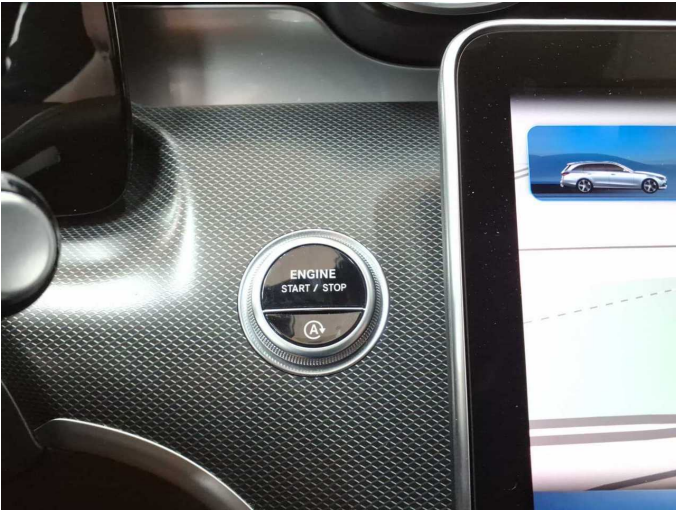


Figure 17: Misc.



Figure 18: Misc.



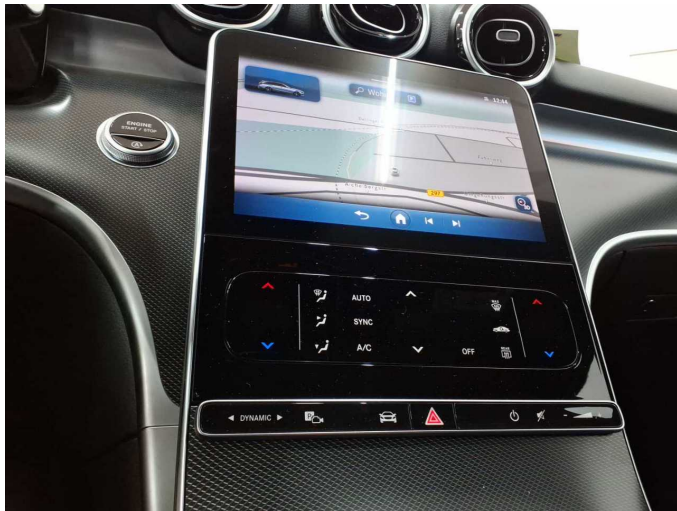


Figure 19: Misc.



Figure 20: Misc.



Figure 21: Misc.



Figure 22: Misc.



Figure 23: Misc.



Figure 24: Misc.



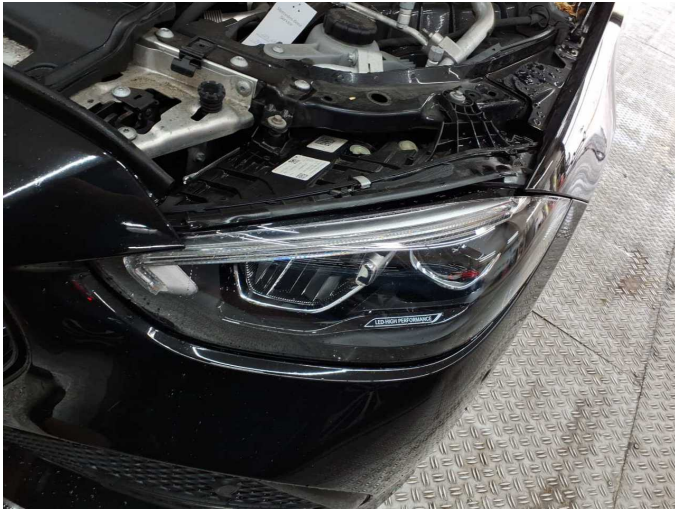


Figure 25: Misc.



Figure 26: Misc.



Figure 27: Misc.



Figure 28: Misc.



Figure 29: Misc.

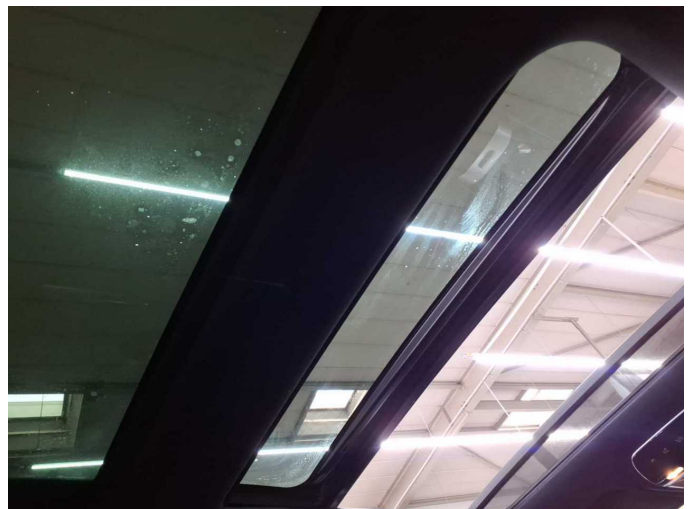


Figure 30: Misc.





Figure 31: Misc.



Figure 32: Misc.



Figure 33: Misc.



Figure 34: Misc.

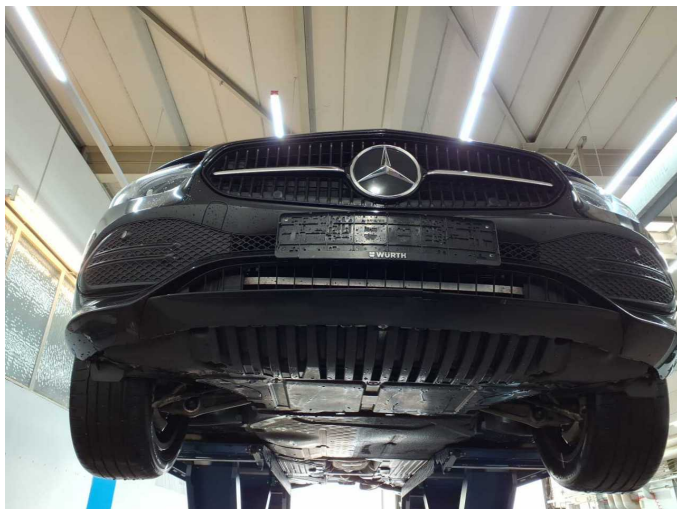
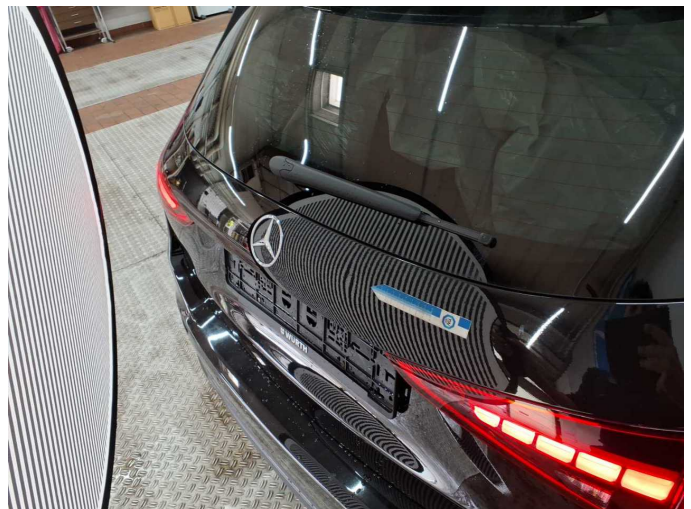
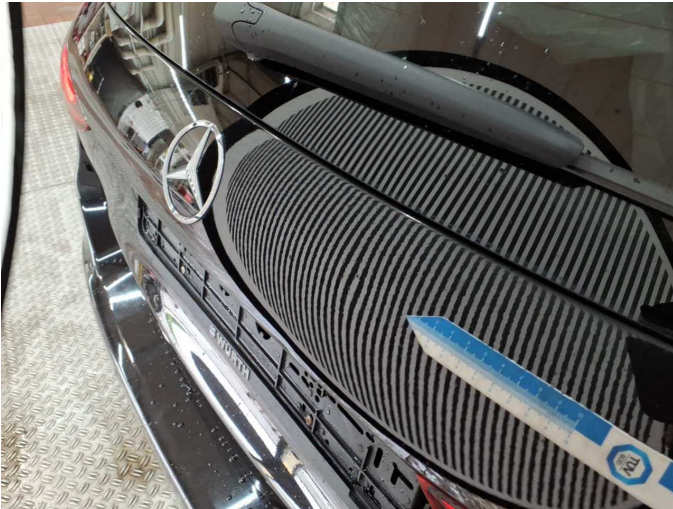


Figure 35: Misc.



Damage 1: Boot lid / rear door: Boot lid - dent(s) - Smart repair





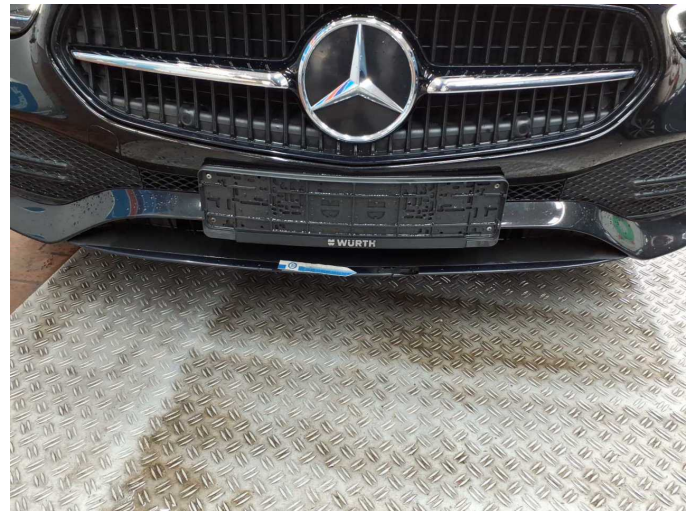
**Damage 1:** Boot lid / rear door: Boot lid - dent(s) - Smart repair



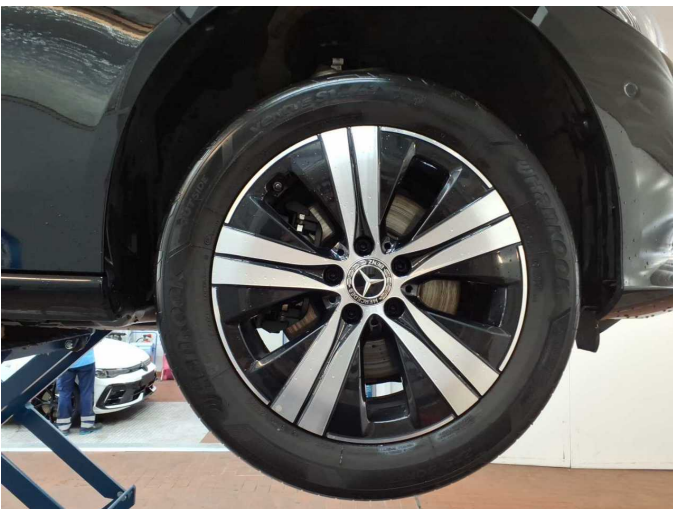
**Damage 2:** Front bumper: Front bumper (Leiste) - Broken / torn - Replace



**Damage 2:** Front bumper: Front bumper (Leiste) - Broken / torn - Replace



**Damage 2:** Front bumper: Front bumper (Leiste) - Broken / torn - Replace

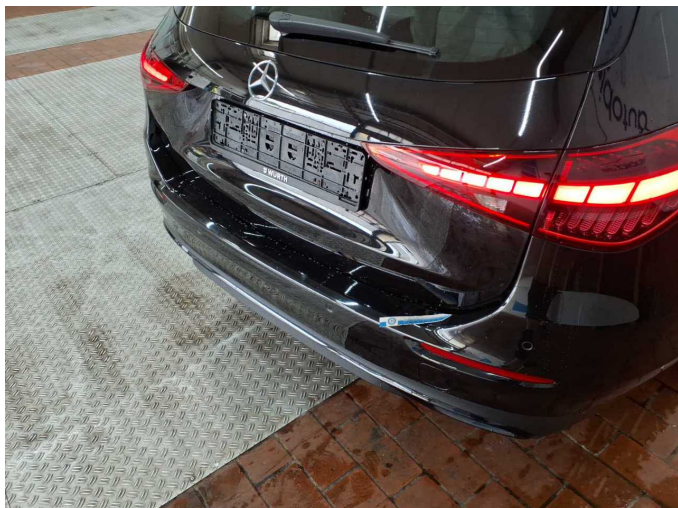


**Damage 3:** Wheel / tyres: Tyre - front right side - Damaged - Replace



**Damage 3:** Wheel / tyres: Tyre - front right side - Damaged - Replace





**Damage 4:** Rear bumper: Rear bumper - Scratch(es) - Smart repair



**Damage 4:** Rear bumper: Rear bumper - Scratch(es) - Smart repair



**Damage 4:** Rear bumper: Rear bumper - Scratch(es) - Smart repair