



Expertise

Protocol number: 41757252
Order number / reference: 25250365
Inspection date: 30 Sept 2025

Manufacturer: Mercedes-Benz	Model: C 220 d T 9G-TRONIC AMG Line
VIN: W1K2062041F053373	



Vehicle details	
Manufacturer / Type / Model / Equipment	
Mercedes-Benz C 220 d T 9G-TRONIC AMG Line	
Vehicle Identification number	W1K2062041F053373
Mileage (Read)	87,424 km
First registration	13 Jul 2022
Number of holders	1
Power / Engine displacement	147 kw / 1,993 ccm
Fuel type / Cylinder	Hybrid Diesel / E / 4
Gearbox / Number of gears	Automatic / 9
Type of drive	Rear drive
Type of vehicle	Station wagon
Colour / colour code	HIGHTECHSILBER METALLIC-LACKE
Doors / Seats	5 / 5
Upholstery type	Leather
Colour of upholstery	Black



Vehicle details

Maintenance booklet / proof	digital proof / complete	Next maintenance in	148 Tag(e)
Last maintenance on / at	02/2025 at 77,260 km		
Key is / should be	2 / 2	FZG documents	ZB#2 (B) was available (copy), ZB#1 (S) was not available
		Letter No.	GJ435647
Previous damage / Accident	None detectable	Repainting	None detectable
Inspection conditions	sufficient	Lifting equipment / pit	yes
Test drive	Not performed	Engine function test	Performed
Manufacturer key number/ type code number	2222 / AYH 00119		
Emission standard	EURO6;WLTP;AP;PI/CI; M, N1 I	Fine dust sticker	
Permitted total weight	2,400 kg	Empty weight	

Tyres

Mounted tyres

#	Tyre size	Type of tyre	Manufacturer	Tread depth
1)	225/45 R18 95Y	Summer tyres on Light alloy	Pirelli	4mm / 4mm
2)	245/40 R18 97Y	Summer tyres on Light alloy	Pirelli	4mm / 4mm

Additional tyres

#	Tyre size	Type of tyre	Manufacturer	Tread depth
1)	225/45 R18 95V	Winter tyres on Light alloy	Pirelli	8mm / 8mm
2)	225/45 R18 95V	Winter tyres on Light alloy	Pirelli	8mm / 8mm

Legend: Tread depth information for tires on the left is in the first place, for tires on the right is in the second place on the axle in the direction of travel



Equipment

Standard equipment

- | | |
|--|---|
| <ul style="list-style-type: none"> • Airbag for driver and front passenger • Airbag: Center airbag • Airbag: Windowbag for driver and front passenger • AMG sports pedal system made of brushed stainless steel with rubber studs • Basic services • Brake assist, active • diesel particulate filter • DYNAMIC SELECT • ECO start-stop function • Chassis: Sports chassis with sports direct-steer system • Speed Limit Assistant • Rear window wiper • Interior headliner fabric crystal grey • ISOFIX child seat attachment with Top Tether in the rear • Mechanical child safety lock for the rear doors • Front headrests • LED high-performance headlights • Mercedes-Benz emergency call system • Center console in high-gloss black • Package: Interior lighting package • Radio: MBUX • Radio accessories: Communication module (LTE) for the use of Mercedes me connect services • Remote Services Plus • Windscreen wipers with rain sensor • Seats: Folding seat backrests in the rear • Cruise control • Electronic immobilizer • Decorative elements metal structure | <ul style="list-style-type: none"> • Airbag: Automatic passenger airbag deactivation • Airbag: Sidebag for driver and front passenger • AMG floor mats • Exterior mirrors left and right heated and electrically adjustable • Brake system with larger brake discs on the front axle • Roof rails black • Double cup holders at the front • EASY-PACK tailgate • Electronic Stability Program (ESP) • 4-way electric window lifter • Transmission: Automatic 9-speed, 9G-TRONIC • Heated rear window • Instrument panel and beltlines in ARTICO man-made leather in black nappa look • Rear headrests (3) • Load compartment cover including EASY-PACK safety net • Steering wheel: Multifunction sports steering wheel in nappa leather • Package: Storage • Radio: Advanced functions MBUX • Radio accessories: Digital radio (DAB) • Radio accessories: Central display • Tire pressure monitoring (TPMS) • Wheels: 45.7 cm (18") AMG light-alloy wheels in 5-spoke design • Lane Keeping Assist, active • High-visibility vest for drivers • Central locking with remote control |
|--|---|

Extra equipment

- | | |
|---|---|
| <ul style="list-style-type: none"> • Ambient lighting with 64 light colors (with directly illuminated light lines.) • Head-up display • KEYLESS-GO (access and driving authorization system) • Paint finish: metallic • Center console metal structure • Package: Advanced Comfort Package (Seat heating for driver and front passenger - Seat Comfort Package: -Various electric and manual adjustment options for the front seats to adapt to the specific body and comfort requirements of the driver and front passenger - Electro-pneumatic 4-way lumbar support and lateral support adjustment with seat controls -Electric seat cushion tilt adjustment - Electric height adjustment -Electric backrest adjustment -Electric seat cushion depth adjustment -Mechanical fore/aft adjustment - Mechanical headrest adjustment) | <ul style="list-style-type: none"> • Trailer hitch with ESP trailer stabilization • Chassis: AGILITY CONTROL chassis with selective damping system with lowering • THERMATIC automatic climate control with 2 climate zones (controlled via the central display or the climate control unit in the center console; sensor system for recording, for example, interior/ outside temperature, sunlight, humidity, and dew point; automatic air recirculation (only in conjunction with navigation system); ventilation system consisting of: 3 center vents in the center level and 2 side vents; fine dust activated carbon filter for filtering dust, soot, and pollen; dew point sensor; residual heat function for efficient use of engine waste heat) |
|---|---|



- Package: Business (for Avantgarde Exterior (P15) or AMG Line Exterior (P31)) (Mirror Package: Electrically folding exterior mirrors, automatic dimming function, ambient lighting - with projection of the Mercedes-Benz logo - Advanced Comfort Package: Seat heating for driver and front passenger, 4-way lumbar support, Seat Comfort Package - Parking Package: Parking package with rearview camera - Infotainment Package: MBUX Navigation Premium, Traffic Sign Assistant, Smartphone Integration - Fuel tank with larger capacity)
- Package: High-end infotainment package (MBUX Navigation Premium (hard drive navigation, pre-installation for Live Traffic Information), Traffic Sign Assistant, Smartphone Integration (connects the mobile phone wirelessly to the multimedia system via Apple CarPlay and Android Auto), Driver display - 31.2 cm (12.3") large LCD color display, Central display - 30.2 cm (11.9"), touch display, MBUX Augmented Reality for navigation.)
- Package: High-End Lighting Package (DIGITAL LIGHT with projection function: -HD system with projection module -DIGITAL LIGHT projection functions: projection function for lines, symbols, animations -ULTRA RANGE high beam with a range of more than 600 m -Topography compensation -Cornering light with roundabout and intersection function -Active cornering light with predictive control -Extended fog light, city light, country road light, motorway light, motorway high beam and bad weather light)
- Seats: Multicontour seats for driver and front passenger (driver and front passenger seats fully electrically adjustable via switches in the door control panel - electro-pneumatic 4-way lumbar support - massage via 8 inflatable air chambers in the lower seat backrest and side restraints as well as 7 zones - deep massage via 4 vibration elements in the seat cushion (driver's side only) - 6 massage programs for the driver, 4 massage programs for the front passenger)
- Package: Advanced Parking Package (12 ultrasonic sensors - 360° camera - Active Parking Assist with PARKTRONIC: detects free parking spaces, assisted parking, visual and acoustic warnings, display of camera and ultrasonic data on the media display - Cross-traffic warning: can provide a visual and acoustic warning when cross-traffic is detected while reversing out of a parking space and, if necessary, automatically initiate emergency braking - Reverse maneuvering braking: can trigger a braking action - Drive-away assistance)
- Package: Driver Assistance (Active Distance Assist, DISTRONIC, Active Speed Limit Assist, Advanced Auto Restart on Motorways, Route-Based Speed Adaptation with End-of-Traffic Jam Assist, Active Traffic Jam Assist, Active Steering Assist, Active Lane Change Assist, Active Emergency Stop Assist, Emergency Lane Function, Active Brake Assist with Vehicle, Bicycle, and Pedestrian Detection; Intersection Function, Turning Function, End-of-Traffic Jam Emergency Braking Function, Evasive Steering Assist, Active Lane Keeping Assist, Active Blind Spot Assist, Exit Warning Function)
- Package: Trunk Comfort (rear seat backrests electrically foldable via switches on the right and left in the control panel in the cargo area - Electric opening and closing of the cargo blind - 12 V socket on the left in the control panel in the cargo area - Reversible mat with one rubberized, non-slip side and one soft velour side)
- Upholstery: black leather
- Radio accessories: Advanced sound system (with 9 speakers and 225 watts of system power)
- Seats: Comfort seats
- Extendable sun visors (with illuminated cosmetic mirror and side-swivelling and extendable)
- Auxiliary heating
- Elimination of type markings on trunk lid
- Heat and noise-insulating acoustic glass (for windshield and front doors)
- Heat-insulating dark tinted glass

Brief expert findings

Documents submitted	At the time of the inspection, the registration certificate Part 2 (letter) was available, but the registration certificate Part 1 (certificate) was not. (Copy)
VIN comparison	The vehicle identification number (VIN) was read from the vehicle and its conformity with the submitted documents was verified during the inspection by the undersigned.
Inspection	The inspection conditions were sufficient for the assessment of the vehicle. Lifting equipment and a pit were available for examining the vehicle.
Test drive	No test drive/maneuvering was carried out during the inspection of the vehicle.
Engine function test	An engine test run was performed.

Value reducing factors

No.	Component group	Description
1	Exhaust system	Exhaust system (Kabel lose) - Differs from the original configuration - Un- / install
2	Front bumper	Front bumper - Scratched - Paint



No.	Component group	Description
3	Vehicle glazing	Windscreen - Damaged - Replace

Wear and tear

No.	Component group	Description
1	2nd wheel set	2 alloy rims - Scratched - No deduction

The vehicle shows signs of wear commensurate with its age and use.

Order/Scope of order

The order was placed to prepare a sales report for the vehicle described. This includes the following:

- Description of core relevant information about the vehicle
- Documentation of equipment features
(Delivery by third-party service providers)
- Documentation of damage, defects, missing parts
- Documentation of previous damage, unrepaired previous damage, repainting
- a brief visual or functional inspection of the equipment details if possible.
(Functional tests of driver assistance systems are not included in the scope of services!)
- a photo documentation of the vehicle

Basis for the order

This product is based on the Alphabet Fuhrpark GmbH guidelines for vehicle returns and valuations. The expert makes the explicit findings in each individual case objectively within the framework of the specified standards based on his or her own expertise.

The vehicle inspection takes place in a disassembled state.

Damage or defects that can only be detected during disassembly/diagnosis work or through advanced knowledge remain within the scope of the prognosis risk. An extended risk exists for concealed defects caused by fraudulent deception and not identifiable by the expert.

Damage or defects resulting from normal use or wear and tear of the vehicle will be accepted according to the applicable standard.

There was no explicit identification or monetary consideration of the expected features within the product.

Features which in their nature and severity slightly exceed normal use but do not constitute unacceptable damage will be documented and identified under signs of use if necessary.

Damage or defects which, according to the underlying standard, can no longer be attributed to normal use or wear and tear are listed in the product under "Depreciating Factors".

Depending on the product specification, a monetary ID can be provided. If this takes place, the costs can be 100% d or pro rata depending on the vehicle's age and mileage.

Previous damages

Apparently, no repaired previous damage could be found on the vehicle.

Comments

- Winterradsatz ist kein Bestandteil des Auslieferungsumfangs.



Figure 1: Diagonal front (left)



Figure 2: Diagonal front (right)



Figure 3: Diagonal rear (left)



Figure 4: Diagonal rear (right)



Figure 5: Interior - front



Figure 6: Interior - rear



Figure 7: Instrument cluster



Figure 8: Instrument panel



Figure 9: Interior 360° view



Figure 10: Cargo area



Figure 11: VIN



Figure 12: Mounted tyres



Figure 13: Documents



Figure 14: Documents



Figure 15: Documents



Figure 16: Documents



Figure 17: Documents



Figure 18: Additional tyres

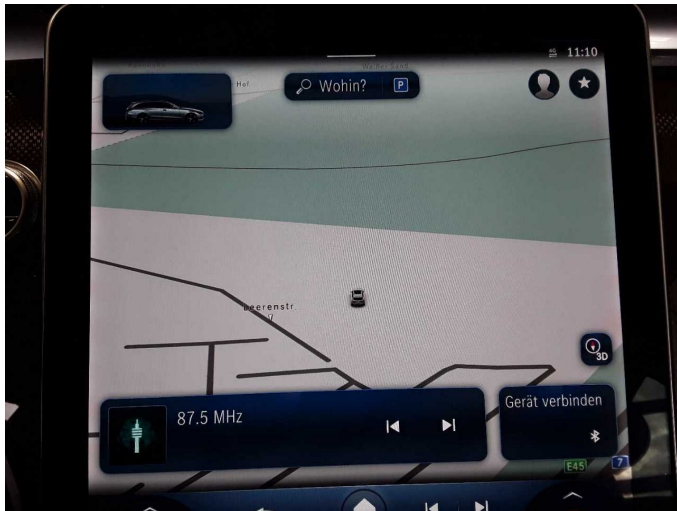


Figure 19: Navigation

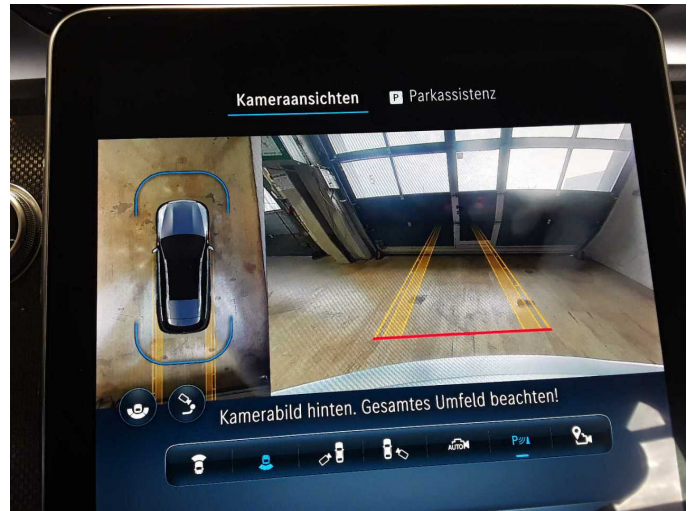


Figure 20: Misc.



Figure 21: Misc.



Figure 22: Misc.



Figure 23: Misc.

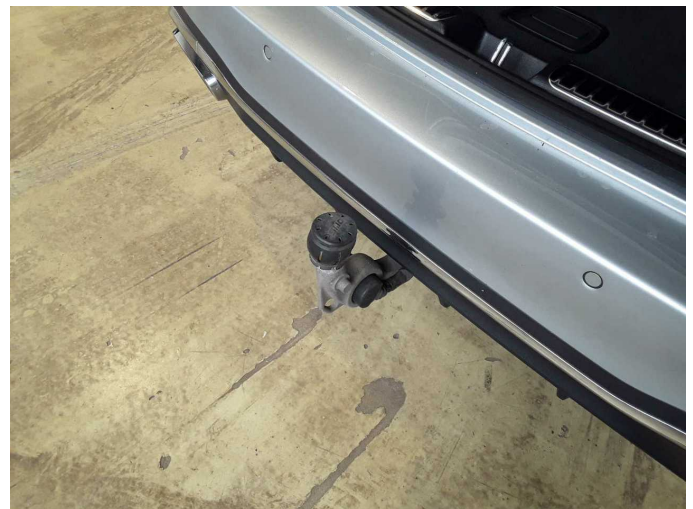


Figure 24: Misc.



Figure 25: Misc.



Damage 1: Exhaust system: Exhaust system (Kabel lose) - Differs from the original configuration - Un- / install



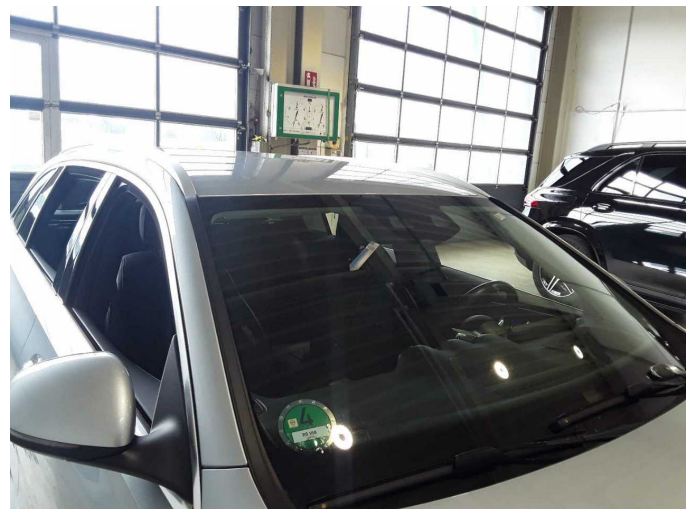
Damage 1: Exhaust system: Exhaust system (Kabel lose) - Differs from the original configuration - Un- / install



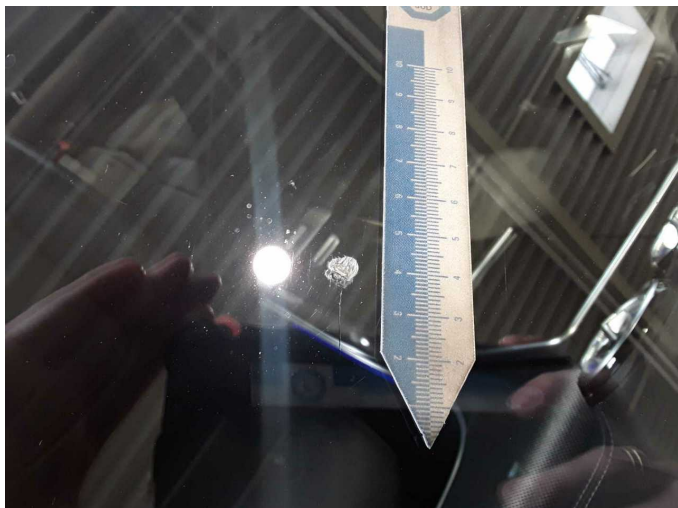
Damage 2: Front bumper: Front bumper - Scratched - Paint



Damage 2: Front bumper: Front bumper - Scratched - Paint



Damage 3: Vehicle glazing: Windscreen - Damaged - Replace



Damage 3: Vehicle glazing: Windscreen - Damaged - Replace



Wartungshistorie

(gemäß Auftraggeber Informationen)

Fahrgestellnummer: W1K2062041F053373

Hersteller / Modell: MERCEDES-BENZ MB C 220 T d 9G-TRONIC AMG Line

Datum	KM-Stand	Beschreibung
19.02.2025	77.260	Regelwartungsdienst
21.03.2024	52.891	Bremsklötze vorne; Regelwartungsdienst
20.04.2023	25.255	Regelwartungsdienst