



MERCEDES-BENZ C-Klasse
C 220 d T 9G-TRONIC

VIN NO W1K2062041F043212
Registration Number 041F043212



MOT Date	Number of Owners	Number of Keys	Odometer Reading
2027-03-01	2	2	158991 km
Last Service	Last Service Mileage	First Registration Date	Country First Registered
-	-	2022-02-02	Germany

Inspection Report Summary

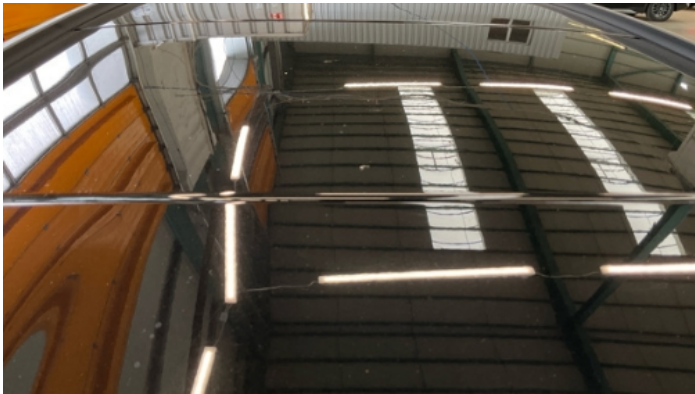
Customer	BCA Online	Report Number	P20250916125746
Inspection Date / Place	2025-09-16 / ARS Altmann AG Riedstadt	Cosmetic Grade	4

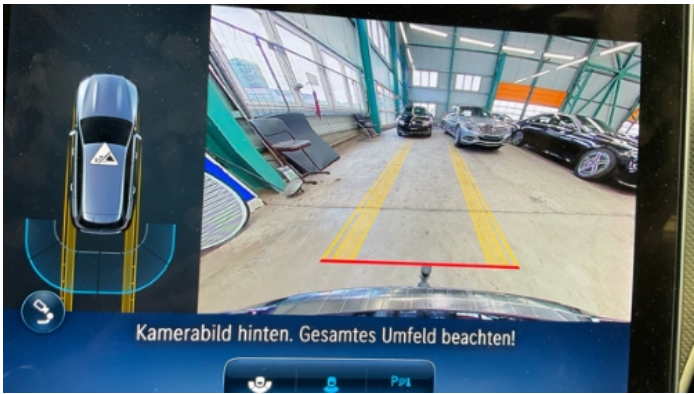
Vehicle Summary

Vehicle Condition	Runner	VAT Type	Qualifying
Fuel Type	Diesel	Road Worthy	Yes
Colour	Black	Engine Size (cc)	1993
Engine Size	2.0	No of Doors	5
Body Type	Stationwagon / Estate	Drive Train	Rear
Seat Colour		No of Seats	5
Seat Covering Name	Anthrazit	Seat Covering	Cloth/Synthetic Leather
Charging Cables		WLTP CO2 Emissions	
Gearbox Type	Automatic		

Vehicle History & Documents

Service Book Available	Missing	Next Service Mileage	km
Previous Usage		Imported	No
Manufacturer Warrenty			







Equipment

Tinted Glass	Trip Computer	Airbag Status	Ambientlighting
Bluetooth telephone interface	Digital Radio	Enhanced speaker system	Heated wing mirrors
Remote adjusting wing mirrors	Reversing Camera	Satellite navigation	Stability control
Electrictailgate	Leather steering wheel	Radio	Tow ball
USB Socket	Alloys wheels	Anti-lock braking	Cruise control
Digitaldashboard	Front parking sensors	Parking Assistance	Remote central locking
Roof rails	Split folding rear seats	Electrically folding wing mirrors	Keyless Entry
LED Headlamps	Rear parking sensors		

Equipment Details

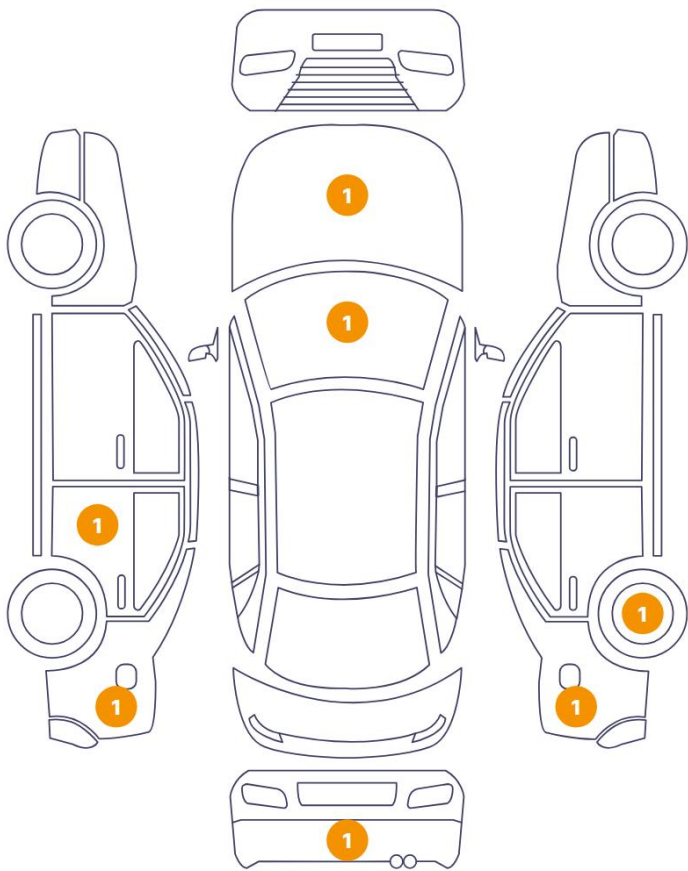
Air Conditioning	Dual Zone Climate Control	Alloy Wheel Size	18
Seat Heating	Front		

Wheels & Tyres

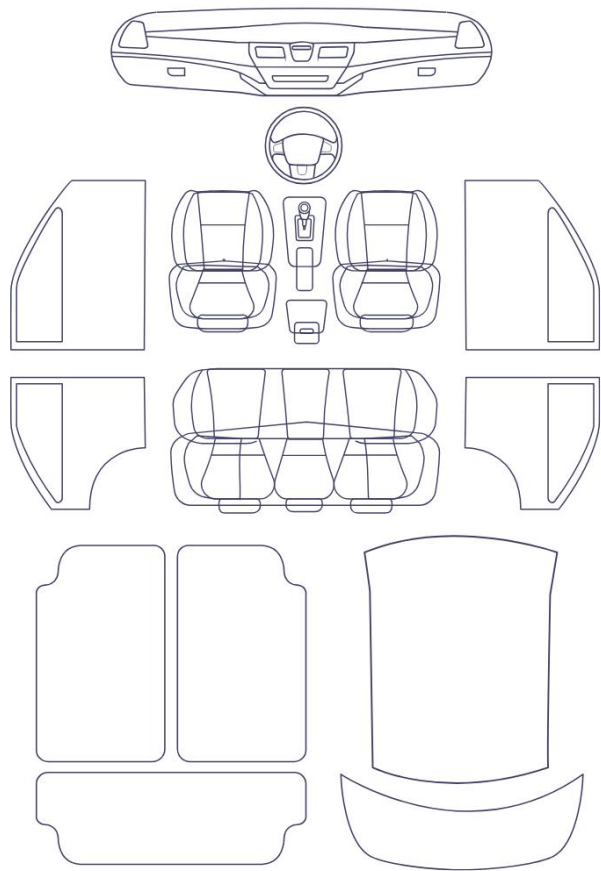
Right Front Tyre Depth	7	Left Front Tyre Depth	7
Right Rear Tyre Depth	7	Left Rear Tyre Depth	7

Cosmetic Damage

7 Schäden



0 Schäden



Component		Damage	Comments
1	Hood	Paint / Stone Chip	
2	Windshield / Front	Glass Break	
3	Pillar / Back Left	Paint / Scratch / Scuff	
4	Fender / Back Left	Bodywork / Dent / Dent	
5	Bumper / Back	Paint / Scratch / Scuff	
6	Rim / Back Right	Out of Bodywork / Scratch	
7	Side Panel / Back Right	Paint / Poor Previous Repair	



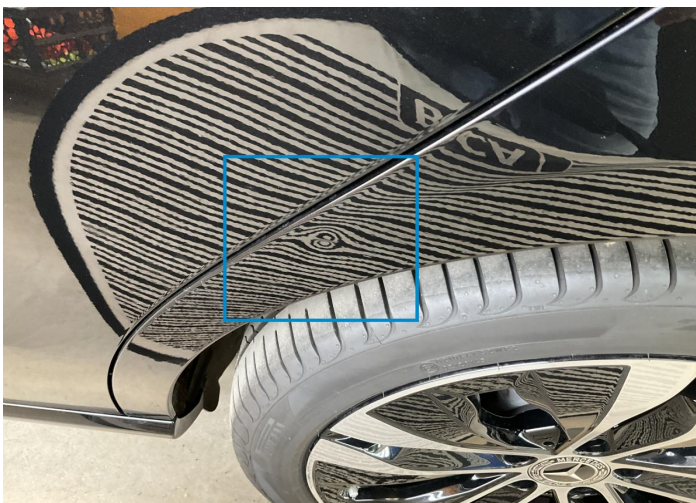
1. Hood
Paint / Stone Chip -



2. Windshield / Front
Glass Break -



3. Pillar / Back Left
Paint / Scratch / Scuff -



4. Fender / Back Left
Bodywork / Dent / Dent -



5. Bumper / Back
Paint / Scratch / Scuff -



6. Rim / Back Right
Out of Bodywork / Scratch -



7. Side Panel / Back Right
Paint / Poor Previous Repair -

Mechanical Condition

Control Lights

Display Defect	✓	ABS Warning Light	✓
Oil Pressure Warning Light	✓	Airbag Warning Light	✓
Brake Warning Light	✓	Power Steering Warning Light	✓
Diesel Particulate Filter Light	✓	ESP Fault/Traction Control Malfunction Light	✓
Alternator / Battery	✓	No Dashboard Lights	✓

Engine

Engine Leak Visible	✓	Engine Starts	✓
Engine Status / EML	✓		

Levels

Coolant Fluid	✓	Brakes Fluid	✓
---------------	---	--------------	---

Equipments Test

Electric Windows	✓	Central Locking	✓
Audio Equipment	✓	Navigation System	✓
AC / Heating System	✓		

Gearbox

Gear Box	✓
----------	---

Test Drive Inspection

Engine			
Fume Quantity	✓	Engine Noise	✓
The Gears Scratch / Skip / Abnormal Operation	✓	Power Loss	✓
Steering Wheel			
Steering Noise / Anomaly	✓	Flywheel Noise	✓
Brake			
Brake System Anomaly	✓		
Gearbox			
Automatic Shift	✓		

✓ *No troubles detected, good condition or correct tests, according to vehicle age and mileage*

! *Damages or malfunction detected that requires repairs by the buyer*

NA *Not applicable*

☐ *Not tested*

Disclaimer

Please also note the "UserGuide condition report", which shows the scope of the vehicle description.

[User Guide](#)