



Expertise

Protocol number: 41220215
Order No. / Reference: 24992560
Inspection date: 25 Aug 2025

Manufacturer: Mercedes-Benz

Model: C 200 d T 9G-TRONIC Avantgarde

VIN: W1K2062031F064253



Vehicle details	
Manufacturer / Type / Model / Equipment	
Mercedes-Benz C 200 d T 9G-TRONIC Avantgarde	
Vehicle Identification number	W1K2062031F064253
Mileage (Read)	110,142 km
First registration	29 Jun 2022
Number of holders	1
Power / Engine displacement	120 kw / 1,993 ccm
Fuel type / Cylinder	Hybrid Diesel / E / 4
Gearbox / Number of gears	Automatic / 9
Type of drive	Rear drive
Type of vehicle	Station wagon
Colour / colour code	OBSIDIANSCHWARZ - METALLICLACK
Doors / Seats	5 / 5
Upholstery type	Artificial leather
Colour of upholstery	Black
Vehicle with smoke odor	no



Vehicle details

Maintenance booklet / proof	Non-existent	Next maintenance in	269 Tag(e)
Key is / should be	2 / 2	FZG documents	ZB#2 (B) was available (copy), ZB#1 (S) was not available
		Letter No.	GJ484054
Previous damage / Accident	Detectable	Repainting	None detectable
Inspection conditions	sufficient	Lifting equipment / pit	yes
Test drive	Not performed	Engine function test	Performed
Manufacturer key number/ type code number	2222 / BDF 00097		
Emission standard	EURO6;WLTP;AP;PI/CI; M, N1 I	Fine dust sticker	
Permitted total weight	2,400 kg	Empty weight	
Dimensions	4793 x 1900 x 1491		

Tyres

Mounted tyres

#	Tyre size	Type of tyre	Manufacturer	Tread depth
1)	225/50 R17 94H	Winter tyres on Light alloy	Pirelli	3mm / 3mm
2)	225/50 R17 94H	Winter tyres on Light alloy	Falken	3mm / 3mm

Legend: Tread depth information for tires on the left is in the first place, for tires on the right is in the second place on the axle in the direction of travel

Equipment

Standard equipment

- Airbag for driver and front passenger
- Airbag: Center airbag
- Airbag: Sidebag for driver and front passenger (combined thorax/pelvis bag)
- Airbag: Windowbag for driver and front passenger
- Ambient lighting with 64 light colors
- Exterior mirrors left and right heated and electrically adjustable
- Brake assist, active
- Roof rails in polished aluminum
- diesel particulate filter
- DYNAMIC SELECT (consisting of driving programs: Comfort, Sport, Eco mode)
- ECO start-stop function
- 4-way electric window lifter
- Velour floor mats
- Transmission: Automatic 9-speed, 9G-TRONIC
- Rear window wiper
- Heated rear window
- Interior headliner fabric crystal grey
- ISOFIX child seat attachment with Top Tether in the rear
- Mechanical child safety lock for the rear doors
- Rear headrests (3)
- Front headrests
- Load compartment cover including EASY-PACK safety net
- LED High Performance Headlights (The elements of the LED High Performance Headlights: - Torch and trifunctional light guide for daytime running lights, position lights, and direction indicators - Multi-chamber reflector system with 4 individual reflectors each) for low beam and high beam. The elements of the rear lights in LED technology: - All lighting functions in full LED technology - Tail light - Brake light and parking light - Rear fog light (left-side only) - Direction indicator - Reversing light - 3rd brake light)
- Mercedes-Benz emergency call system (can provide a decisive time advantage in an emergency. A communication module with its own SIM card automatically triggers an emergency call when an accident is detected, which can shorten the time until emergency services arrive. The emergency call can also be triggered manually to organize assistance.)
- Package: AVANTGARDE Exterior (radiator grille with integrated Mercedes star and chrome-plated louvre, chrome radiator grille frame, 43.2 cm (17") 5-spoke alloy wheels, high-gloss black paint and high-gloss rims, 225/50 R 17 on 7 J x 17 ET 44.5, dynamic front bumper with centrally positioned decorative trim in high-gloss chrome and diamond-pattern air intakes in black, AGILITY CONTROL suspension with 15 mm lowering and selective damping system, bar on the rear side windows in high-gloss black)
- Airbag: Automatic passenger airbag deactivation (The system automatically deactivates the passenger airbag as soon as it detects a rear-facing child seat or registers that the passenger seat is unoccupied. A transponder in the child seat is not necessary. If it is detected that an adult is sitting down, the airbag is automatically activated and the risk of incorrect operation is reduced.)
- Basic services (breakdown management, maintenance management, accident management, telediagnosis, remote vehicle diagnosis)
- Double cup holders at the front
- EASY-PACK tailgate (with electric operation for opening and closing)
- Electronic Stability Program (ESP) (including anti-lock braking system (ABS) and traction control (ASR))
- Speed Limit Assistant (The Speed Limit Assistant detects and displays speed limits.)
- Rear bumper in body color (rear bumper painted in body color with centrally positioned decorative panel (wing) in glossy chrome)
- KEYLESS-GO start function
- THERMATIC automatic climate control with 1 climate zone (controlled via the central display or the climate control unit in the center console - sensor system for recording, for example, interior/outside temperature, sunlight, humidity, and dew point - ventilation system consisting of: 3 center vents in the center level and 2 side vents, 2 ventilation openings each in the footwell for the driver and front passenger - fine dust filter for filtering dust, soot, and pollen - dew point sensor, continuous defroster vent under the windshield and 2 fixed defroster vents)
- Steering wheel: Multifunction sports steering wheel in leather (sporty 3-spoke design - leather trim - black grained shift paddles - control via touch panels: left: driver display, cruise control and limiter or Active Distance Assist DISTRONIC; right: MBUX multimedia system (e.g., audio volume and track selection, telephony and navigation), touch sensitivity adjustable via central display)
- Center console in high-gloss black
- Package: Storage (storage compartment with net on the left side of the cargo area - double cup holder in the center console for 2 x 750 ml - rubber strap on the right side of the cargo area - folding box under the cargo floor - 1 additional bag hook on the right side of the cargo area - recess including storage tray on the right side of the cargo area - map pockets on the backs of the front seats - reversible mat in the trunk floor)



- Radio: Advanced MBUX functions (personalization (profiles) and prediction functions - MBUX voice assistant "LINGUATRONIC" with natural language understanding - activation via Hey Mercedes - MBUX voice assistant learning function through connection to a cloud-based online dictionary, Mercedes me connect service available free of charge for 3 years from activation - Wi-Fi hotspot - Internet radio)
- Radio accessories: Digital radio (DAB)
- Radio accessory: Communication module (LTE) for using Mercedes me connect services (The communication module with a vehicle-mounted, LTE-capable SIM card offers you added convenience and safety. It continuously connects you to your vehicle—and the vehicle to infrastructure such as the Mercedes-Benz server or the internet. This allows you to use services such as Live Traffic Information from Mercedes me connect.)
- Windscreen wipers with rain sensor
- Power steering
- Seats: Folding seat backrests in the rear
- Lane Keeping Assist, active
- Cruise control
- High-visibility vest for drivers
- Electronic immobilizer
- Decorative elements diamond look silver-grey

Extra equipment

- Active Distance Assist DISTRONIC (automatically regulates the distance to the vehicle in front.)
- Package: Business (for Avantgarde Exterior (P15) or AMG Line Exterior (P31)) (Mirror Package: Electrically folding exterior mirrors, automatic dimming function, ambient lighting - with projection of the Mercedes-Benz logo - Advanced Comfort Package: Seat heating for driver and front passenger, 4-way lumbar support, Seat Comfort Package - Parking Package: Parking package with rearview camera - Infotainment Package: MBUX Navigation Premium, Traffic Sign Assistant, Smartphone Integration - Fuel tank with larger capacity)
- Package: Infotainment package (MBUX Navigation Premium (hard drive navigation, pre-installation for Live Traffic Information) Traffic Sign Assistant Smartphone Integration (connects the mobile phone wirelessly to the multimedia system via Apple CarPlay and Android Auto))

- Package: Interior Lighting Package (Illuminated glove compartment - Illumination of the Wireless Mobile Interface or the storage compartment for mobile phones - Illumination of the storage compartment in the center console or the double cup holders - Illumination of the storage compartment under the center console armrest - Two vanity lights in front - Two reading lights in the overhead control panel - Two reading lights in the interior mirror in conjunction with the mirror P - Two reading lights and interior light function in the grab handles in the rear - Illumination of the trunk or cargo area)
- Radio: MBUX (fully digital instrument display with 26 cm (10.25") LCD color display and a resolution of 1,440 x 540 pixels - Bluetooth telephony / audio - Wi-Fi hotspot)
- Radio accessories: Central display (high-resolution, slightly angled central display with a 24 cm (9.5") screen diagonal, with MBUX multimedia system - touch display with LCD technology)
- Tire pressure monitoring (TPMS)
- Remote Services Plus (Communication module - Mercedes me Services, remote vehicle status query, programming of auxiliary heating/ventilation, remote door locking and unlocking, sunroof/ windows with remote locking and opening including ventilation radio, personalized vehicle location, vehicle tracking, geographic vehicle monitoring, parking service monitoring, location function (Remote Vehicle Finder), notification when driving at speed, Send2Car function)
- Central locking with remote control

- Paint finish: metallic
- Package: Advanced Comfort Package (Seat heating for driver and front passenger - Seat Comfort Package: -Various electric and manual adjustment options for the front seats to adapt to the specific body and comfort requirements of the driver and front passenger - Electro-pneumatic 4-way lumbar support and lateral support adjustment with seat controls -Electric seat cushion tilt adjustment - Electric height adjustment -Electric backrest adjustment -Electric seat cushion depth adjustment -Mechanical fore/aft adjustment - Mechanical headrest adjustment)
- Package: Night (for T-model with Avantgarde exterior) (Radiator grille: slats in high-gloss black and decorative trim in high-gloss chrome (17") light alloy wheels in 5-spoke design, black lacquered and high-sheen with 225/50 R17 on 7Jx17 ET44, 5 front apron with decorative trim (wing) in high-gloss black, rear bumper with decorative trim (wing) in high-gloss black, beltline trim strip and window surround in high-gloss black, exterior mirror housings painted in high-gloss black, heat-insulating dark-tinted glass at the rear (from B-pillar), roof rails in black.)
- Upholstery: ARTICO man-made leather
- Radio accessories: Advanced sound system (with 9 speakers and 225 watts of system power)



- Package: Park (12 ultrasonic sensors - Rear view camera - Active Parking Assist with PARKTRONIC: detects free parking spaces, assisted parking, visual and acoustic warnings, display of camera and ultrasonic data on the media display - Cross traffic warning: can provide a visual and acoustic warning when cross traffic is detected while reversing out of a parking space and, if necessary, automatically initiate emergency braking - Reverse maneuvering braking: can trigger a braking action - Drive-away assistance)
- Seats: Comfort seats
- Elimination of type markings on trunk lid
- Heat and noise-insulating acoustic glass (for windshield and front doors)
- Wheels: 43.2 cm (17") 5-spoke alloy wheels (black painted and high-sheen with 225/50 R 17 on 7 J x 17 ET 44.5)
- Heat-insulating dark tinted glass

Brief expert findings

Documents submitted	At the time of the inspection, the registration certificate Part 2 (letter) was available, but the registration certificate Part 1 (certificate) was not. (Copy)
VIN comparison	The vehicle identification number (VIN) was read from the vehicle and its conformity with the submitted documents was verified during the inspection by the undersigned.
Inspection	The inspection conditions were sufficient for the assessment of the vehicle. Lifting equipment and a pit were available for examining the vehicle.
Test drive	No test drive/maneuvering was carried out during the inspection of the vehicle.
Engine function test	An engine test run was performed.

Value reducing factors

No.	Component group	Description
1	Misc.	Inspection / maintenance - No evidence - No deduction
2	Braking system	Brake fluid - No evidence - No deduction
3	Instrument panel	Indicator light (Reifen Druck Kontroll System) - on - Perform diagnosis
4	Front bumper	Front bumper - Scratch(es) - Smart repair
5	Trim / covers	Roof lining - Burn hole (cigarettes) - Loss in value
6	Boot lid / rear door	Trim - standard - lower - Damaged - Replace
7	Wheel / tyres	Tyres - complete set - Does not meet the leasing specifications - Replace
8	Bonnet	Bonnet - Stone chips - Repair and paint

Wear and tear

No.	Component group	Description
1	Rear bumper	Rear bumper - Scratched - No deduction
2	Interior	Interior - Scratch(es) - No deduction
3	Documents	Service book (Digital) - Missing - No deduction

The vehicle shows signs of wear commensurate with its age and use.

Accident damages

No.	Accident
1	Rear



Order/Scope of order

The order was placed to prepare a sales report for the vehicle described. This includes the following:

- Description of core relevant information about the vehicle
- Documentation of equipment features
(Delivery by third-party service providers)
- Documentation of damage, defects, missing parts
- Documentation of previous damage, unrepaired previous damage, repainting
- a brief visual or functional inspection of the equipment details if possible.
(Functional tests of driver assistance systems are not included in the scope of services!)
- a photo documentation of the vehicle

Basis for the order

This product is based on the Alphabet Fuhrpark GmbH guidelines for vehicle returns and valuations. The expert makes the explicit findings in each individual case objectively within the framework of the specified standards based on his or her own expertise.

The vehicle inspection takes place in a disassembled state.

Damage or defects that can only be detected during disassembly/diagnosis work or through advanced knowledge remain within the scope of the prognosis risk. An extended risk exists for concealed defects caused by fraudulent deception and not identifiable by the expert.

Damage or defects resulting from normal use or wear and tear of the vehicle will be accepted according to the applicable standard.

There was no explicit identification or monetary consideration of the expected features within the product.

Features which in their nature and severity slightly exceed normal use but do not constitute unacceptable damage will be documented and identified under signs of use if necessary.

Damage or defects which, according to the underlying standard, can no longer be attributed to normal use or wear and tear are listed in the product under "Depreciating Factors".

Depending on the product specification, a monetary ID can be provided. If this takes place, the costs can be 100% d or pro rata depending on the vehicle's age and mileage.

Previous damages

Non-repaired previous damages were found at the vehicle. The necessary repair costs are listed in the expert report or if necessary, are listed in detail in a separately enclosed repair cost calculation.

Comments

- Die beigefügte Reparaturkostenkalkulation wurde nach bestem Wissen und Gewissen unter eingeschränkten Besichtigungsbedingung im demontagefreien Zustand erstellt. Es können aufgrund verdeckter Beschädigung erhebliche Mehrkosten und somit Abweichung der für den Unfall ausgewiesenen Reparaturkosten nicht ausgeschlossen werden



Figure 1: Diagonal front (left)



Figure 2: Diagonal front (right)



Figure 3: Diagonal rear (left)



Figure 4: Diagonal rear (right)



Figure 5: Interior - front



Figure 6: Interior - rear



Figure 7: Instrument cluster



Figure 8: Instrument panel



Figure 9: interior 360° view



Figure 10: Cargo area

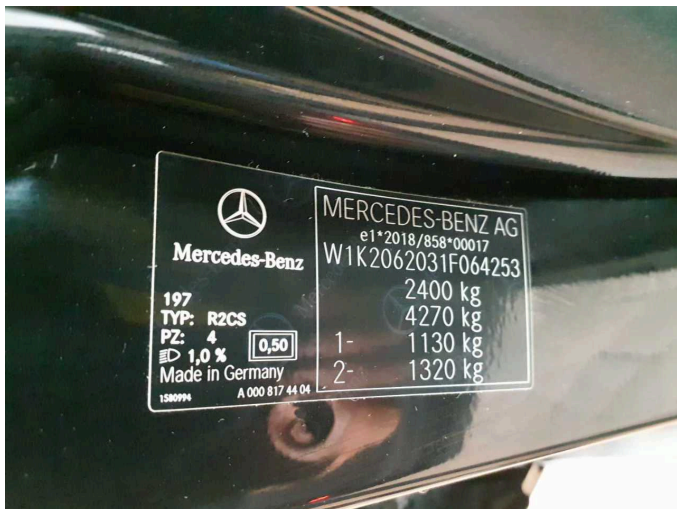


Figure 11: VIN



Figure 12: Mounted tyres



Figure 13: Documents



Figure 14: Documents

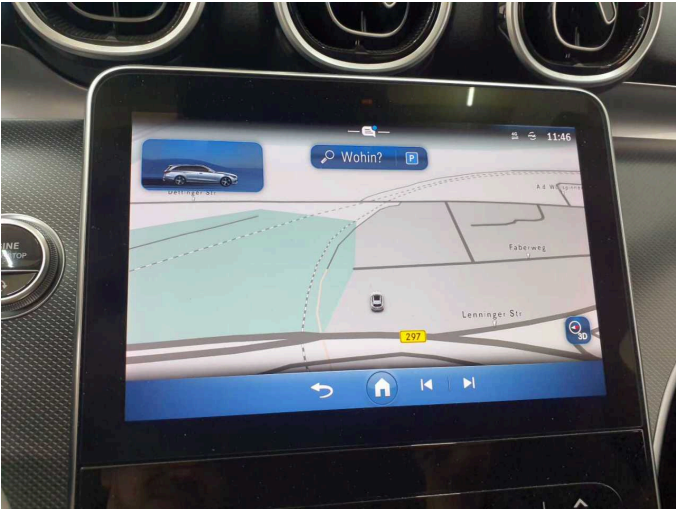


Figure 15: Navigation



Figure 16: Misc.



Figure 17: Misc.



Figure 18: Misc.



Figure 19: Misc.

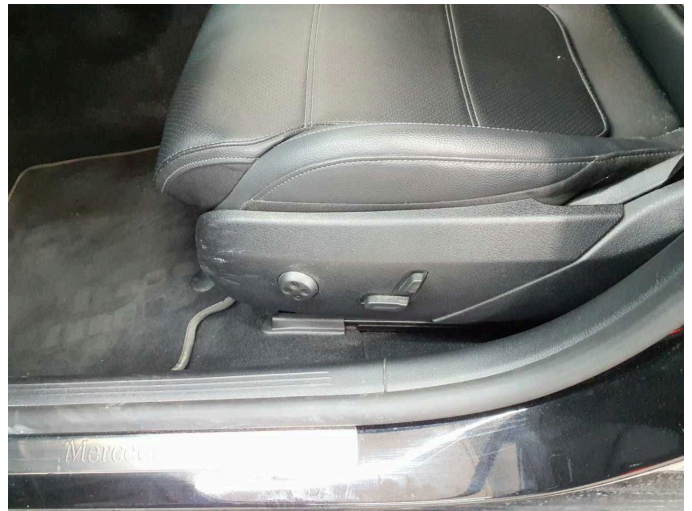


Figure 20: Misc.



Figure 21: Misc.



Figure 22: Misc.

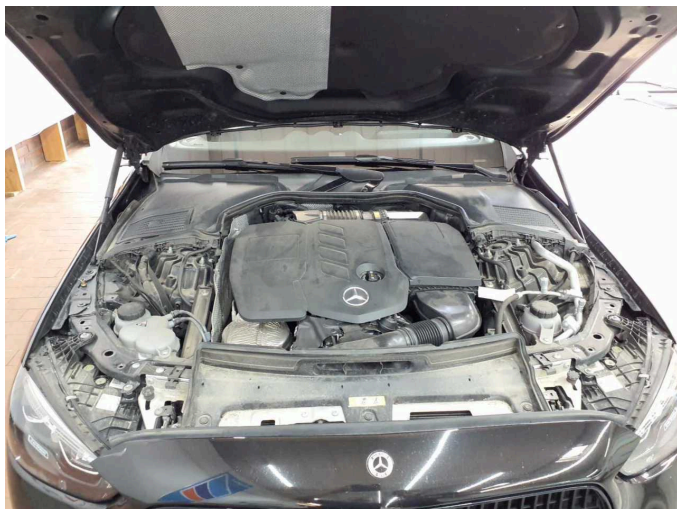


Figure 23: Misc.



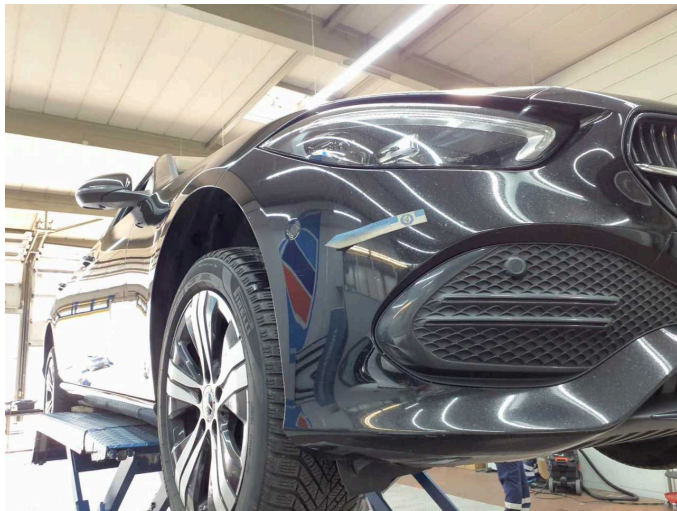
Figure 24: Misc.



Figure 25: Misc.



Damage 3: Instrument panel: Indicator light (Reifen Druck Kontroll System) - on - Perform diagnosis



Damage 4: Front bumper: Front bumper - Scratch(es) - Smart repair



Damage 4: Front bumper: Front bumper - Scratch(es) - Smart repair



Damage 4: Front bumper: Front bumper - Scratch(es) - Smart repair



Damage 4: Front bumper: Front bumper - Scratch(es) - Smart repair



Damage 4: Front bumper: Front bumper - Scratch(es) - Smart repair



Damage 5: Trim / covers: Roof lining - Burn hole (cigarettes) - Loss in value



Damage 5: Trim / covers: Roof lining - Burn hole (cigarettes) - Loss in value



Damage 6: Boot lid / rear door: Trim - standard - lower - Damaged - Replace



Damage 6: Boot lid / rear door: Trim - standard - lower - Damaged - Replace



Damage 6: Boot lid / rear door: Trim - standard - lower - Damaged - Replace



Damage 6: Boot lid / rear door: Trim - standard - lower - Damaged - Replace



Damage 7: Wheel / tyres: Tyres - complete set - Does not meet the leasing specifications - Replace



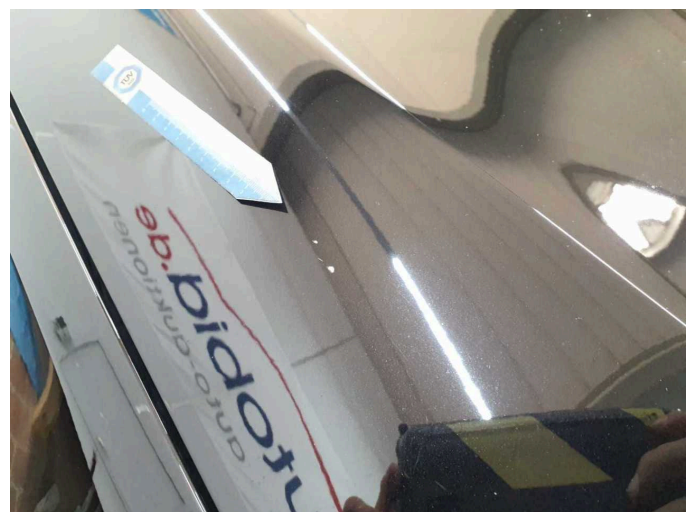
Damage 7: Wheel / tyres: Tyres - complete set - Does not meet the leasing specifications - Replace



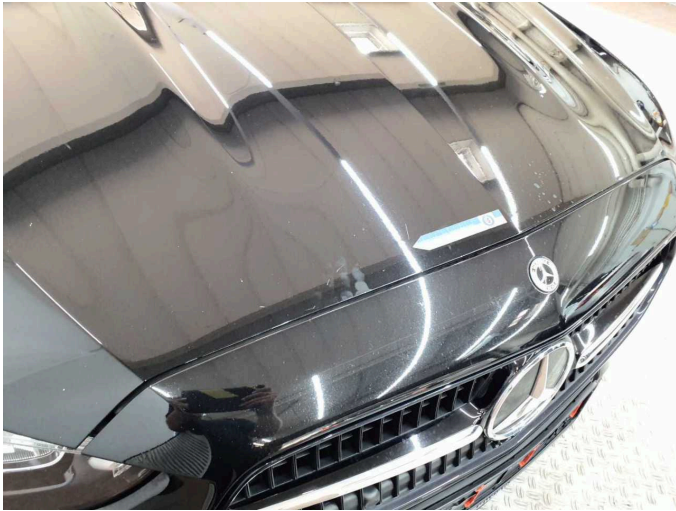
Damage 7: Wheel / tyres: Tyres - complete set - Does not meet the leasing specifications - Replace



Damage 8: Bonnet: Bonnet - Stone chips - Repair and paint



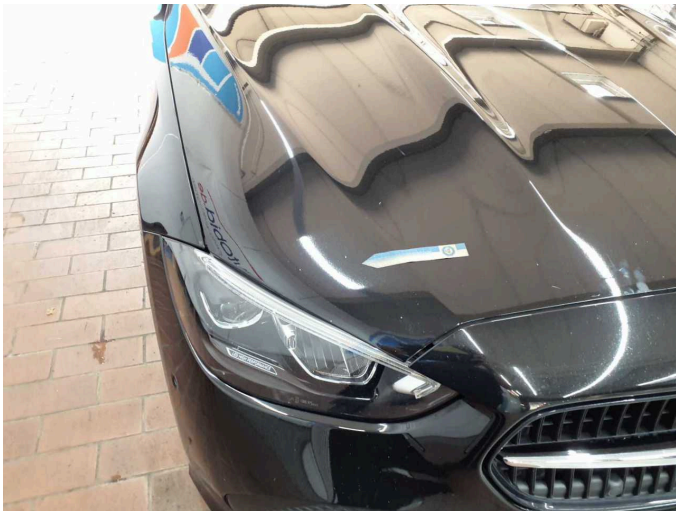
Damage 8: Bonnet: Bonnet - Stone chips - Repair and paint



Damage 8: Bonnet: Bonnet - Stone chips - Repair and paint



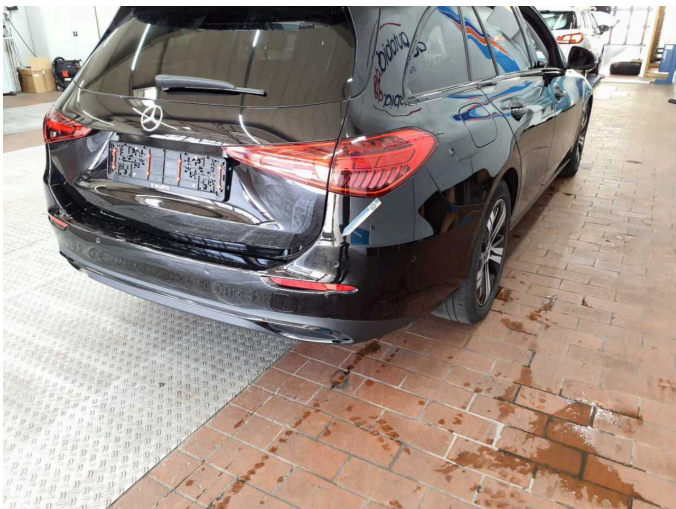
Damage 8: Bonnet: Bonnet - Stone chips - Repair and paint



Damage 8: Bonnet: Bonnet - Stone chips - Repair and paint



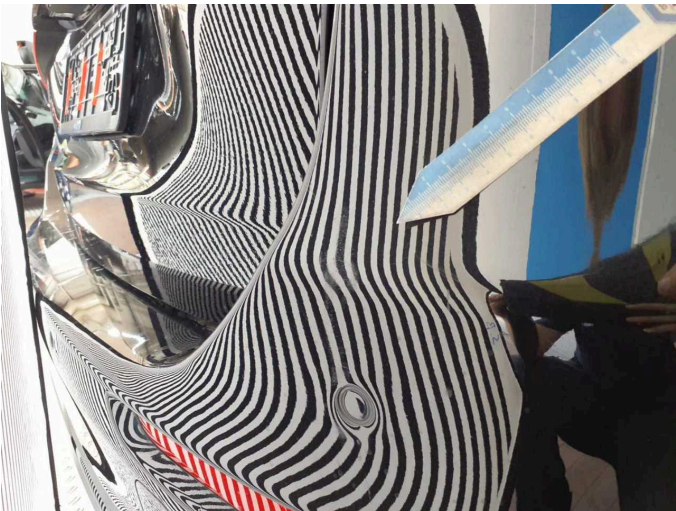
Damage 8: Bonnet: Bonnet - Stone chips - Repair and paint



Accident 1: Rear



Accident 1: Rear



Accident 1: Rear



Accident 1: Rear



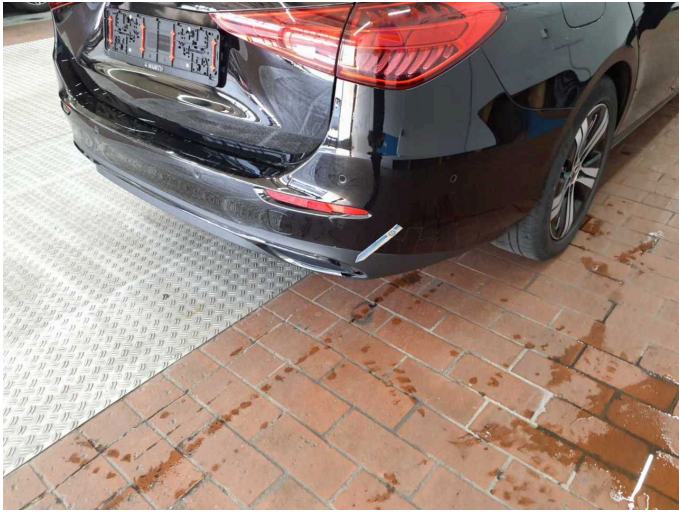
Accident 1: Rear



Accident 1: Rear



Accident 1: Rear



Accident 1: Rear