



Expertise

Protocol number: 41515912
Order No. / Reference: 25213130
Inspection date: 11 Sept 2025

Manufacturer: Mercedes-Benz	Model: C 200 d T 9G-TRONIC Avantgarde
VIN: W1K2062031F063675	



Vehicle details	
Manufacturer / Type / Model / Equipment	
Mercedes-Benz C 200 d T 9G-TRONIC Avantgarde	
Vehicle Identification number	W1K2062031F063675
Mileage (Read)	68,025 km
First registration	17 Jun 2022
Number of holders	1
Next periodical technical inspection	06/2027
(Report on hand)	
Power / Engine displacement	120 kw / 1,993 ccm
Fuel type / Cylinder	Hybrid Diesel / E / 4
Gearbox / Number of gears	Automatic / 9
Type of drive	Rear drive
Type of vehicle	Station wagon
Colour / colour code	SCHWARZ - UNILACK
Doors / Seats	5 / 5
Upholstery type	Cloth / leather combination
Colour of upholstery	Black-Anthracite
Vehicle with smoke odor	no
Driving readiness	Not roadworthy / moveable



Vehicle details

Maintenance booklet / proof	Non-existent	Next maintenance in	839 km
Key is / should be	2 / 2	FZG documents	ZB#2 (B) was available (copy), ZB#1 (S) was not available
		Letter No.	GJ480923
Previous damage / Accident	None detectable	Repainting	None detectable
Inspection conditions	sufficient	Lifting equipment / pit	yes
Test drive	short drive on the company premises	Engine function test	Performed
Driving readiness	Not roadworthy / moveable		
Roadworthiness	not roadworthy/operational safe		
Manufacturer key number/ type code number	2222 / BDF 00097		
Emission standard	EURO6;WLTP;AP;PI/CI; M, N1 I	Fine dust sticker	
Permitted total weight	2,400 kg	Empty weight	

Tyres

Mounted tyres

#	Tyre size	Type of tyre	Manufacturer	Tread depth
1)	225/50 R17 94Y	Summer tyres on Light alloy	Goodyear	1mm / 1mm
2)	225/50 R17 94Y	Summer tyres on Light alloy	Pirelli	6mm / 6mm

Additional tyres

#	Tyre size	Type of tyre	Manufacturer	Tread depth
1)	225/50 R17 98H	Winter tyres on Light alloy	Pirelli	5mm / 5mm
2)	225/50 R17 98H	Winter tyres on Light alloy	Pirelli	5mm / 5mm

Legend: Tread depth information for tires on the left is in the first place, for tires on the right is in the second place on the axle in the direction of travel

Equipment

Standard equipment

- Airbag for driver and front passenger
- Airbag: Center airbag
- Airbag: Sidebag for driver and front passenger (combined thorax/pelvis bag)
- Airbag: Windowbag for driver and front passenger
- Ambient lighting with 64 light colors
- Exterior mirrors left and right heated and electrically adjustable
- Brake assist, active
- Roof rails in polished aluminum
- diesel particulate filter
- DYNAMIC SELECT (consisting of driving programs: Comfort, Sport, Eco mode)
- ECO start-stop function
- 4-way electric window lifter
- Velour floor mats
- Transmission: Automatic 9-speed, 9G-TRONIC
- Rear window wiper
- Heated rear window
- Interior headliner fabric crystal grey
- ISOFIX child seat attachment with Top Tether in the rear
- Mechanical child safety lock for the rear doors
- Rear headrests (3)
- Front headrests
- Paint finish: Uni
- Load compartment cover including EASY-PACK safety net
- LED High Performance Headlights (The elements of the LED High Performance Headlights: - Torch and trifunctional light guide for daytime running lights, position lights, and direction indicators - Multi-chamber reflector system with 4 individual reflectors each) for low beam and high beam. The elements of the rear lights in LED technology: - All lighting functions in full LED technology - Tail light - Brake light and parking light - Rear fog light (left-side only) - Direction indicator - Reversing light - 3rd brake light)
- Mercedes-Benz emergency call system (can provide a decisive time advantage in an emergency. A communication module with its own SIM card automatically triggers an emergency call when an accident is detected, which can shorten the time until emergency services arrive. The emergency call can also be triggered manually to organize assistance.)
- Airbag: Automatic passenger airbag deactivation (The system automatically deactivates the passenger airbag as soon as it detects a rear-facing child seat or registers that the passenger seat is unoccupied. A transponder in the child seat is not required. If it detects that an adult is sitting in the seat, the airbag is automatically activated, reducing the risk of incorrect operation.)
- Basic services (breakdown management, maintenance management, accident management, telediagnosis, remote vehicle diagnosis)
- Double cup holders at the front
- EASY-PACK tailgate (with electric operation for opening and closing)
- Electronic Stability Program (ESP) (including anti-lock braking system (ABS) and traction control (ASR))
- Speed Limit Assistant (The Speed Limit Assistant detects and displays speed limits.)
- Rear bumper in body color (rear bumper painted in body color with centrally positioned decorative panel (wing) in glossy chrome)
- KEYLESS-GO start function
- THERMATIC automatic climate control with 1 climate zone (controlled via the central display or the climate control unit in the center console - sensor system for recording, for example, interior/outside temperature, sunlight, humidity, and dew point - ventilation system consisting of: 3 center vents in the center level and 2 side vents, 2 ventilation openings each in the footwell for the driver and front passenger - fine dust filter for filtering dust, soot, and pollen - dew point sensor, continuous defroster vent under the windshield and 2 fixed defroster vents)
- Steering wheel: Multifunction sports steering wheel in leather (sporty 3-spoke design - leather trim - black grained shift paddles - control via touch panels: left: driver display, cruise control and limiter or Active Distance Assist DISTRONIC; right: MBUX multimedia system (e.g., audio volume and track selection, telephony and navigation), touch sensitivity adjustable via central display)
- Center console in high-gloss black
- Package: Storage (storage compartment with net on the left side of the cargo area - double cup holder in the center console for 2 x 750 ml - rubber strap on the right side of the cargo area - folding box under the cargo floor - 1 additional bag hook on the right side of the cargo area - recess including storage tray on the right side of the cargo area - map pockets on the backs of the front seats - reversible mat in the trunk floor)



- Package: AVANTGARDE Exterior (radiator grille with integrated Mercedes star and chrome-plated louvre, chrome radiator grille frame, 43.2 cm (17") 5-spoke alloy wheels, high-gloss black paint and high-gloss rims, 225/50 R 17 on 7 J x 17 ET 44.5, dynamic front bumper with centrally positioned decorative trim in high-gloss chrome and diamond-pattern air intakes in black, AGILITY CONTROL suspension with 15 mm lowering and selective damping system, bar on the rear side windows in high-gloss black)
- Upholstery: ARTICO imitation leather/fabric
- Radio: Advanced MBUX functions (personalization (profiles) and prediction functions - MBUX voice assistant "LINGUATRONIC" with natural language understanding - activation via Hey Mercedes - MBUX voice assistant learning function through connection to a cloud-based online dictionary, Mercedes me connect service available free of charge for 3 years from activation - Wi-Fi hotspot - Internet radio)
- Radio accessory: Communication module (LTE) for using Mercedes me connect services (The communication module with a vehicle-mounted, LTE-capable SIM card offers you added convenience and safety. It continuously connects you to your vehicle—and the vehicle to infrastructure such as the Mercedes-Benz server or the internet. This allows you to use services such as Live Traffic Information from Mercedes me connect.)
- Windscreen wipers with rain sensor
- Power steering
- Seats: Folding seat backrests in the rear
- Lane Keeping Assist, active
- Cruise control
- High-visibility vest for drivers
- Electronic immobilizer
- Decorative elements diamond look silver-grey

Extra equipment

- Ambient lighting with 64 light colors (with directly illuminated light lines.)
- Package: Advanced Infotainment Package
- Package: Advanced Comfort Package
- Package: Assistance
- Package: High-End Business (Mirror package: Electric folding exterior mirrors, automatic dimming, ambient lighting - Advanced Comfort package: Heated seats for driver/front passenger, 4-way lumbar support, seat comfort package - Parking package: with rear view camera - Assistance package: Blind spot assistant - Advanced Infotainment package: MBUX Navigation Premium, traffic sign assistant, smartphone integration, driver display - 31.2 cm (12.3"), central display - 30.2 cm (11.9") touch display, LCD - fuel tank with large capacity)
- Package: Park
- Wheels: 43.2 cm (17") light alloy wheels in 5-spoke design
- Sunroof: Electric panoramic sunroof

- Package: Interior Lighting Package (Illuminated glove compartment - Illumination of the Wireless Mobile Interface or the storage compartment for mobile phones - Illumination of the storage compartment in the center console or the double cup holders - Illumination of the storage compartment under the center console armrest - Two vanity lights in front - Two reading lights in the overhead control panel - Two reading lights in the interior mirror in conjunction with the mirror P - Two reading lights and interior light function in the grab handles in the rear - Illumination of the trunk or cargo area)
- Radio: MBUX (fully digital instrument display with 26 cm (10.25") LCD color display and a resolution of 1,440 x 540 pixels - Bluetooth telephony / audio - Wi-Fi hotspot)
- Radio accessories: Digital radio (DAB)
- Radio accessories: Central display (high-resolution, slightly angled central display with a 24 cm (9.5") screen diagonal, with MBUX multimedia system - touch display with LCD technology)
- Tire pressure monitoring (TPMS)
- Remote Services Plus (Communication module - Mercedes me Services, remote vehicle status query, programming of auxiliary heating/ventilation, remote door locking and unlocking, sunroof/ windows with remote locking and opening including ventilation radio, personalized vehicle location, vehicle tracking, geographic vehicle monitoring, parking service monitoring, location function (Remote Vehicle Finder), notification when driving at speed, Send2Car function)
- Central locking with remote control

- Head-up display
- THERMATIC automatic climate control with 2 climate zones (controlled via the central display or the climate control unit in the center console; sensor system for recording, for example, interior/ outside temperature, sunlight, humidity, and dew point; automatic air recirculation (only in conjunction with navigation system); ventilation system consisting of: 3 center vents in the center level and 2 side vents; fine dust activated carbon filter for filtering dust, soot, and pollen; dew point sensor; residual heat function for efficient use of engine waste heat)
- Package: Lights (Adaptive High Beam Assistant - automatic high beam switching on and off, camera on the inside of the windshield, detects oncoming and preceding illuminated vehicles, activated by pressing the steering wheel control lever to the high beam position)
- Seats: Comfort seats



- Elimination of type markings on trunk lid

Brief expert findings

Documents submitted	At the time of the inspection, the registration certificate Part 2 (letter) was available, but the registration certificate Part 1 (certificate) was not. (Copy)
VIN comparison	The vehicle identification number (VIN) was read from the vehicle and its conformity with the submitted documents was verified during the inspection by the undersigned.
Inspection	The inspection conditions were sufficient for the assessment of the vehicle. Lifting equipment and a pit were available for examining the vehicle.
Test drive	A short maneuvering and shunting trip was carried out on the company premises.
Engine function test	An engine test run was performed.
Driving readiness	At the time of inspection, the vehicle was not drivable under its own power, but can be moved on its own axle with the aid of auxiliary equipment.
Roadworthy/operational safe	At the time of the inspection, the vehicle was not operational or roadworthy due to the damage characteristic listed under accident or value-reducing factors.

Value reducing factors

No.	Component group	Description
1	Sill - right side	Sill - Scratch(es) - Smart repair
2	Vehicle glazing	Windscreen - Stone chips - Smart repair
3	Side panel - rear right side	Sill - Scratch(es) - Smart repair
4	Side panel - rear right side	Side panel - Scratch(es) - Smart repair
5	Rear bumper	Rear bumper (Ladekante) - Scratch(es) - Smart repair
6	Side panel - rear left side	Sill - Scratch(es) - Smart repair
7	Measurement	Undercarriage (Reifen laufen Einseitig ab) - Malposition - Measure
8	Body	Body (Ausgeblichen folgekosten möglich) - Paint defect - Conditioning
9	Wheel / tyres	Tyre - front (Einseitig abgefahren) - Worn - Replace
10	Front bumper	Front bumper - Scratched - Paint
11	Bonnet	Bonnet - Stone chips - Paint

Wear and tear

No.	Component group	Description
1	2nd wheel set	1 tyre (Schraube) - Damaged - No deduction
2	Side panel - rear left side	Side panel - Dent / paintcoat damage - No deduction
3	Sill - left side	Sill - Scratch(es) - No deduction

The vehicle shows signs of wear commensurate with its age and use.



Order/Scope of order

The order was placed to prepare a sales report for the vehicle described. This includes the following:

- Description of core relevant information about the vehicle
- Documentation of equipment features
(*Delivery by third-party service providers*)
- Documentation of damage, defects, missing parts
- Documentation of previous damage, unrepaired previous damage, repainting
- a brief visual or functional inspection of the equipment details if possible.
(*Functional tests of driver assistance systems are not included in the scope of services!*)
- a photo documentation of the vehicle

Basis for the order

This product is based on the Alphabet Fuhrpark GmbH guidelines for vehicle returns and valuations. The expert makes the explicit findings in each individual case objectively within the framework of the specified standards based on his or her own expertise.

The vehicle inspection takes place in a disassembled state.

Damage or defects that can only be detected during disassembly/diagnosis work or through advanced knowledge remain within the scope of the prognosis risk. An extended risk exists for concealed defects caused by fraudulent deception and not identifiable by the expert.

Damage or defects resulting from normal use or wear and tear of the vehicle will be accepted according to the applicable standard.

There was no explicit identification or monetary consideration of the expected features within the product.

Features which in their nature and severity slightly exceed normal use but do not constitute unacceptable damage will be documented and identified under signs of use if necessary.

Damage or defects which, according to the underlying standard, can no longer be attributed to normal use or wear and tear are listed in the product under "Depreciating Factors".

Depending on the product specification, a monetary ID can be provided. If this takes place, the costs can be 100% d or pro rata depending on the vehicle's age and mileage.

Previous damages

Apparently, no repaired previous damage could be found on the vehicle.

Comments

- keine Serviceinfo

- Winterradsatz ist kein Bestandteil des Auslieferungsumfangs.



Figure 1: Diagonal front (left)



Figure 2: Diagonal front (right)



Figure 3: Diagonal rear (left)



Figure 4: Diagonal rear (right)



Figure 5: Interior - front



Figure 6: Interior - rear



Figure 7: Instrument cluster



Figure 8: Instrument panel



Figure 9: Interior 360° view



Figure 10: Cargo area



Figure 11: VIN



Figure 12: Mounted tyres



Figure 13: Documents



Figure 14: Documents

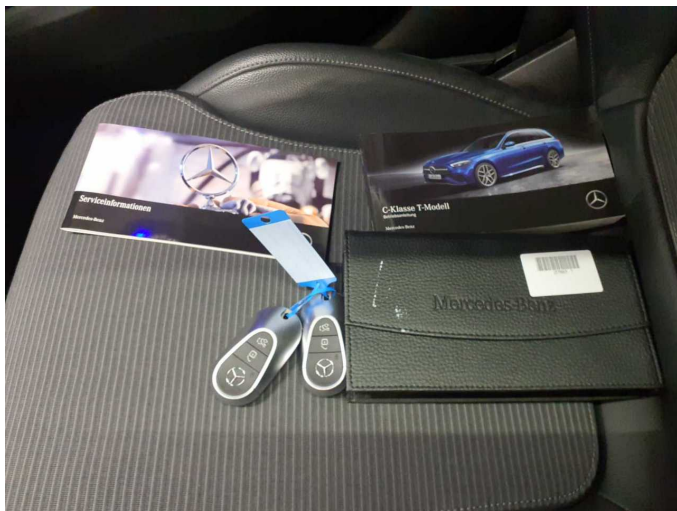


Figure 15: Documents



Figure 16: Documents



Figure 17: Additional tyres

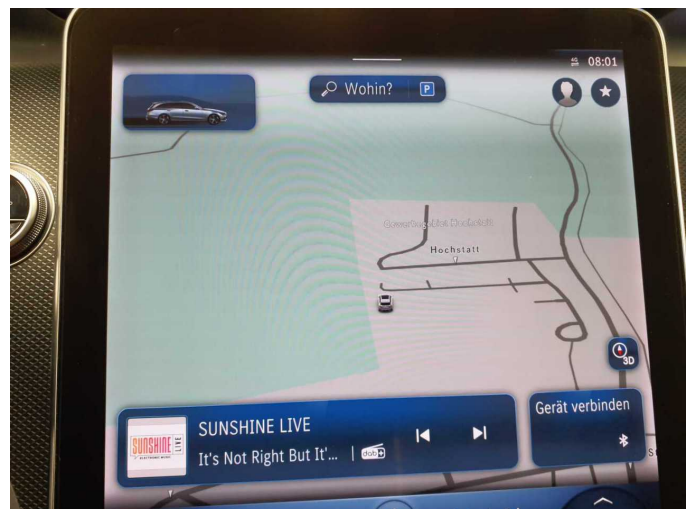


Figure 18: Navigation



Figure 19: Misc.



Figure 20: Misc.



Figure 21: Misc.



Figure 22: Misc.



Figure 23: Misc.



Figure 24: Misc.



Figure 25: Misc.



Figure 26: Misc.



Figure 27: Misc.



Figure 28: Misc.



Figure 29: Misc.

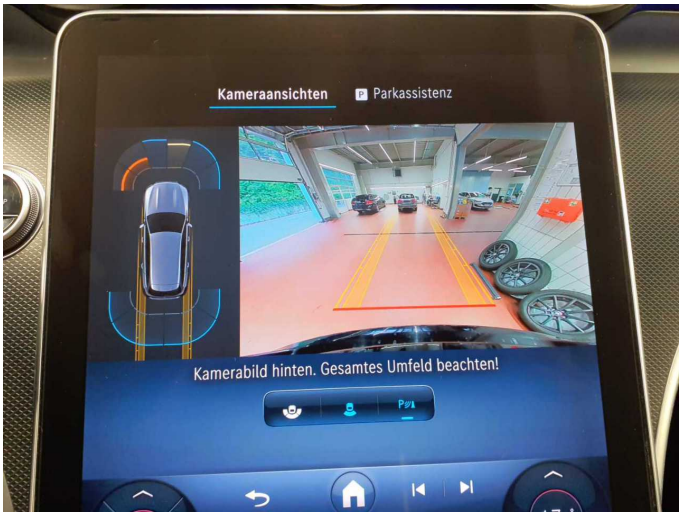


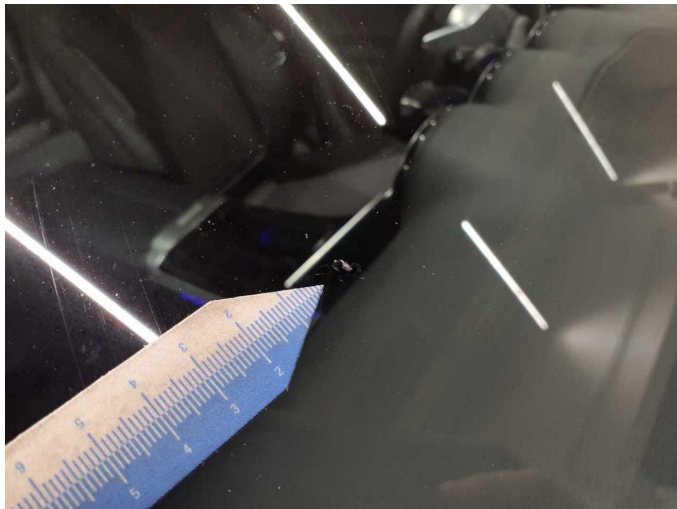
Figure 30: Misc.



Damage 1: Sill - right side: Sill - Scratch(es) - Smart repair



Damage 1: Sill - right side: Sill - Scratch(es) - Smart repair



Damage 2: Vehicle glazing: Windscreen - Stone chips - Smart repair



Damage 2: Vehicle glazing: Windscreen - Stone chips - Smart repair



Damage 2: Vehicle glazing: Windscreen - Stone chips - Smart repair



Damage 3: Side panel - rear right side: Sill - Scratch(es) - Smart repair



Damage 3: Side panel - rear right side: Sill - Scratch(es) - Smart repair



Damage 4: Side panel - rear right side: Side panel - Scratch(es) - Smart repair



Damage 4: Side panel - rear right side: Side panel - Scratch(es) - Smart repair



Damage 5: Rear bumper: Rear bumper (LadeKante) - Scratch(es) - Smart repair



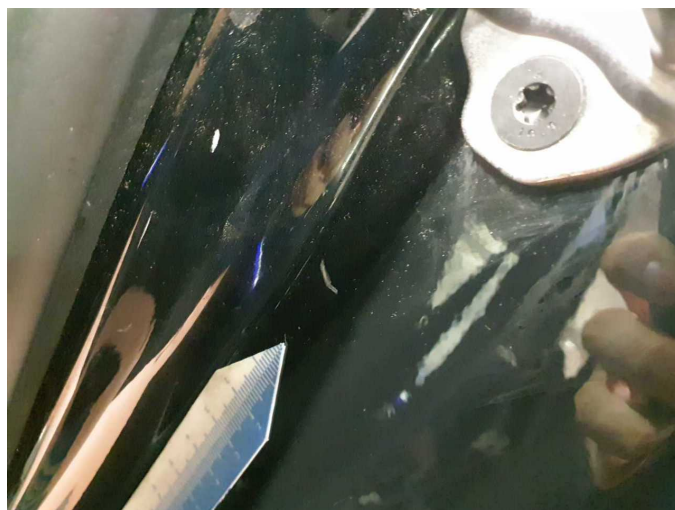
Damage 5: Rear bumper: Rear bumper (LadeKante) - Scratch(es) - Smart repair



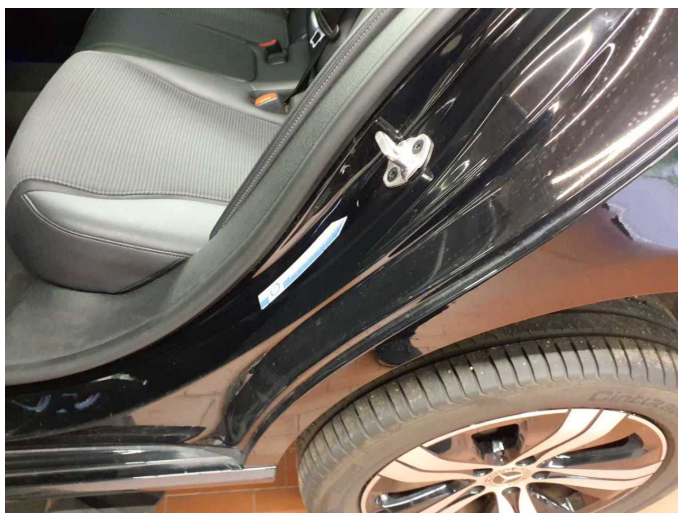
Damage 5: Rear bumper: Rear bumper (LadeKante) - Scratch(es) - Smart repair



Damage 5: Rear bumper: Rear bumper (Ladekante) - Scratch(es) - Smart repair



Damage 6: Side panel - rear left side: Sill - Scratch(es) - Smart repair



Damage 6: Side panel - rear left side: Sill - Scratch(es) - Smart repair



Damage 8: Body: Body (Ausgeblichen folgekosten möglich) - Paint defect - Conditioning



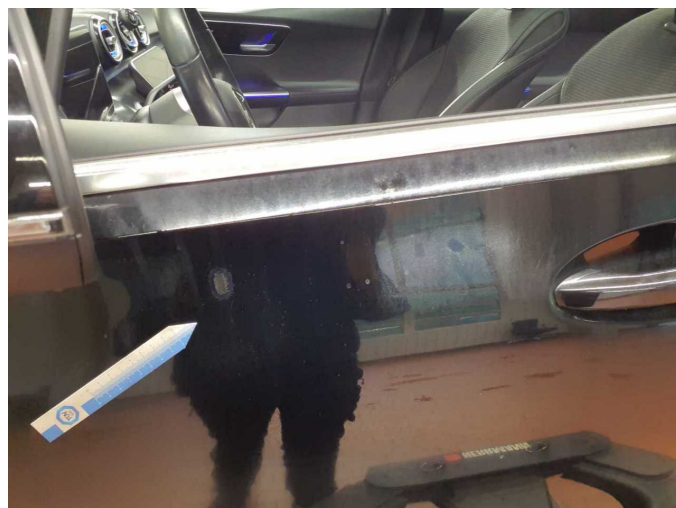
Damage 8: Body: Body (Ausgeblichen folgekosten möglich) - Paint defect - Conditioning



Damage 8: Body: Body (Ausgeblichen folgekosten möglich) - Paint defect - Conditioning



Damage 8: Body: Body (Ausgeblichen folgekosten möglich) - Paint defect - Conditioning



Damage 8: Body: Body (Ausgeblichen folgekosten möglich) - Paint defect - Conditioning



Damage 8: Body: Body (Ausgeblichen folgekosten möglich) - Paint defect - Conditioning



Damage 8: Body: Body (Ausgeblichen folgekosten möglich) - Paint defect - Conditioning



Damage 8: Body: Body (Ausgeblichen folgekosten möglich) - Paint defect - Conditioning



Damage 8: Body: Body (Ausgeblichen folgekosten möglich) - Paint defect - Conditioning



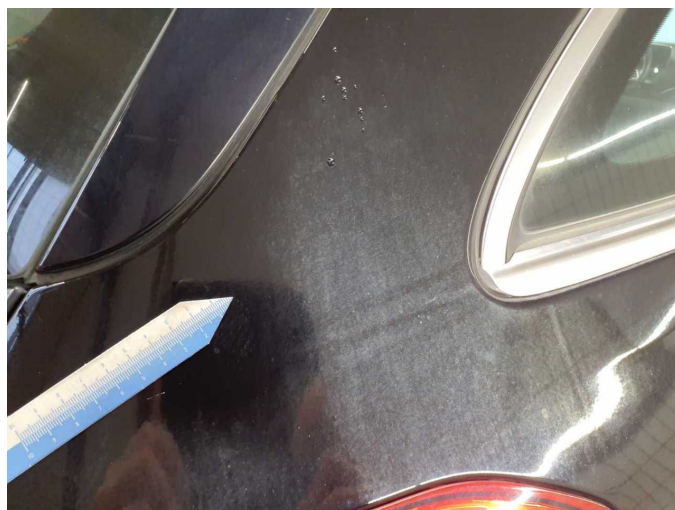
Damage 8: Body: Body (Ausgeblichen folgekosten möglich) - Paint defect - Conditioning



Damage 8: Body: Body (Ausgeblichen folgekosten möglich) - Paint defect - Conditioning



Damage 8: Body: Body (Ausgeblichen folgekosten möglich) - Paint defect - Conditioning



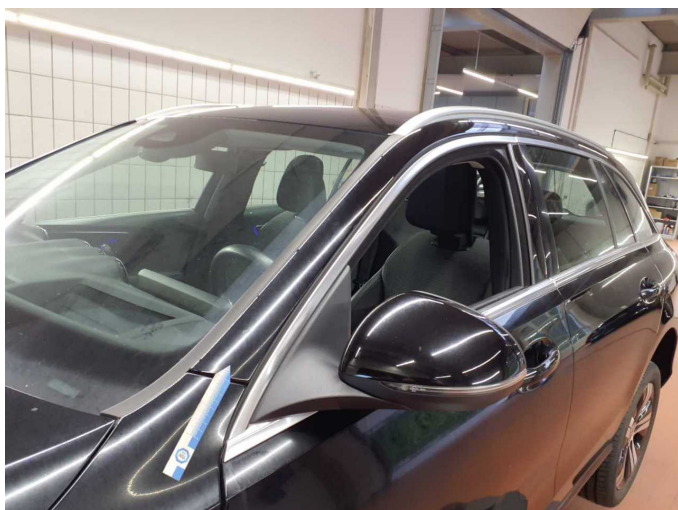
Damage 8: Body: Body (Ausgeblichen folgekosten möglich) - Paint defect - Conditioning



Damage 8: Body: Body (Ausgeblichen folgekosten möglich) - Paint defect - Conditioning



Damage 8: Body: Body (Ausgeblichen folgekosten möglich) - Paint defect - Conditioning



Damage 8: Body: Body (Ausgeblichen folgekosten möglich) - Paint defect - Conditioning



Damage 9: Wheel / tyres: Tyre - front (Einseitig abgefahren) - Worn - Replace



Damage 9: Wheel / tyres: Tyre - front (Einseitig abgefahren) - Worn - Replace



Damage 9: Wheel / tyres: Tyre - front (Einseitig abgefahren) - Worn - Replace



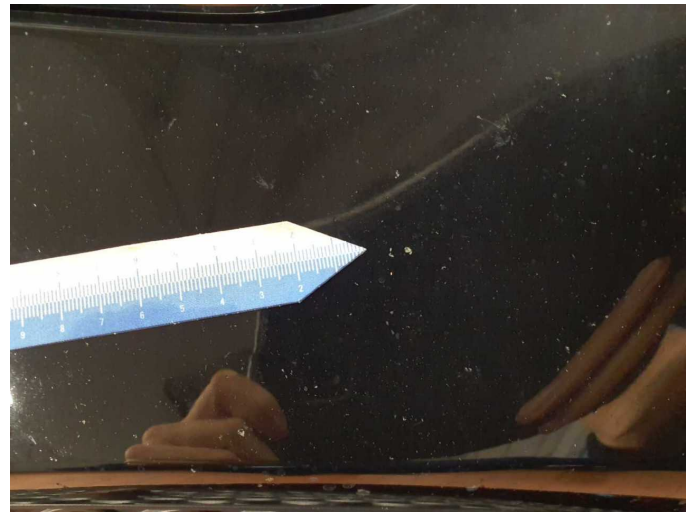
Damage 9: Wheel / tyres: Tyre - front (Einseitig abgefahren) - Worn - Replace



Damage 10: Front bumper: Front bumper - Scratched - Paint



Damage 10: Front bumper: Front bumper - Scratched - Paint



Damage 10: Front bumper: Front bumper - Scratched - Paint



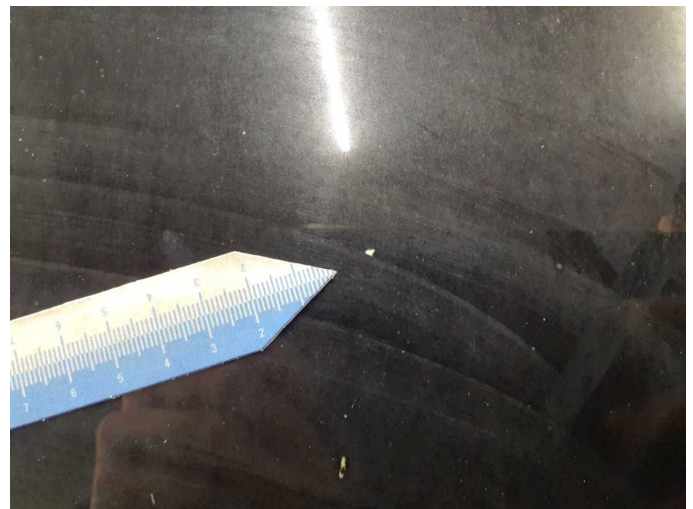
Damage 10: Front bumper: Front bumper - Scratched - Paint



Damage 10: Front bumper: Front bumper - Scratched - Paint



Damage 11: Bonnet: Bonnet - Stone chips - Paint



Damage 11: Bonnet: Bonnet - Stone chips - Paint



Damage 11: Bonnet: Bonnet - Stone chips - Paint



Damage 11: Bonnet: Bonnet - Stone chips - Paint



Damage 11: Bonnet: Bonnet - Stone chips - Paint