



Expertise

Protocol number: 41347118
Order No. / Reference: 25140125
Inspection date: 3 Sept 2025

Manufacturer: Mercedes-Benz

Model: C 220 d Coupe 9G-TRONIC

VIN: W1K2053141G109709



Vehicle details	
Manufacturer / Type / Model / Equipment	
Mercedes-Benz C 220 d Coupe 9G-TRONIC	
Vehicle Identification number	W1K2053141G109709
Mileage (Read)	69,132 km
First registration	19 Apr 2022
Number of holders	1
Power / Engine displacement	143 kw / 1,950 ccm
Fuel type / Cylinder	Diesel / 4
Gearbox / Number of gears	Automatic / 9
Type of drive	Rear drive
Type of vehicle	Coupe
Colour / colour code	SELENITGRAU - METALLIKLACK
Doors / Seats	2 / 4
Upholstery type	Leather
Colour of upholstery	Black-Anthracite



Vehicle details

Maintenance booklet / proof	Non-existent	Next maintenance in	-77 Tag(e)
Key is / should be	2 / 2	FZG documents	ZB#2 (B) was available (copy), ZB#1 (S) was not available
		Letter No.	GJ430122
Previous damage / Accident	None detectable	Repainting	None detectable
Inspection conditions	sufficient	Lifting equipment / pit	yes
Test drive	Not performed	Engine function test	Performed
Manufacturer key number/ type code number	2222 / AMK 00145		
Emission standard	EURO6;WLTP;AP;PI/CI; M, N1 I	Fine dust sticker	
Permitted total weight	2,145 kg	Empty weight	

Tyres

Mounted tyres

#	Tyre size	Type of tyre	Manufacturer	Tread depth
1)	225/50 R17 94H	Winter tyres on Light alloy	Pirelli	5mm / 5mm
2)	225/50 R17 94H	Winter tyres on Light alloy	Pirelli	6mm / 6mm

Additional tyres

#	Tyre size	Type of tyre	Manufacturer	Tread depth
1)	225/50 R17 94Y	Summer tyres on Light alloy	Bridgestone	4mm / 4mm
2)	225/50 R17 94Y	Summer tyres on Light alloy	Bridgestone	5mm / 5mm

Legend: Tread depth information for tires on the left is in the first place, for tires on the right is in the second place on the axle in the direction of travel

Equipment

Standard equipment

- | | |
|--|---|
| <ul style="list-style-type: none"> • ADAPTIVE BRAKE with hill start assist, pre-filling and dry braking in wet conditions • Anti-lock braking system (ABS) • ATTENTION ASSIST (the attention assistant) • Exterior mirrors left and right heated, electrically adjustable from the inside • Third brake light in LED technology • ECO start-stop function • Electronic Stability Program (ESP) with Crosswind Assist • Chassis: AGILITY CONTROL chassis with selective damping system with lowering • Pedestrian protection (active bonnet) • Transmission: Automatic 9-speed, 9G-TRONIC • Rear lights with LED technology • Interior headliner in crystal grey fabric • KEYLESS-GO start function • Remote trunk lid unlocking via vehicle key • Instrument cluster with 2 tube-shaped round instruments • Steering wheel: Multifunction steering wheel, black leather, 3-spoke design • Steering: Direct Steering • Upholstery: ARTICO man-made leather/Norwich fabric • Radio: Audio 20 GPS • Radio accessories: Speaker with 5-way front bass • Tire pressure monitoring • Wheels: 43.2 cm (17") light alloy wheels, 4-spoke design • Seat belts in black • Seats: Rear seat backrests foldable 40/20/40 split and comfort controls in the trunk • Pre-installation for vehicle monitoring • High-visibility vest for drivers • Green heat-insulating glass all around including rear window made of toughened safety glass | <ul style="list-style-type: none"> • Airbag: Automatic passenger airbag deactivation • Airbags Coupe • Armrest for driver and passenger foldable with compartment • Brake Assist, Active • diesel particulate filter • DYNAMIC SELECT for selecting the different driving programs • Driving light assistant • Electric window lifter with comfort operation and anti-pinch protection, 2-way • Luggage net on the side of the trunk left with two hooks • Illuminated and lockable glove compartment • Heated rear window with timer control • ISOFIX child seat attachment in the rear • Climate: THERMATIC automatic climate control with 2 climate zones • LED high-performance headlights • Steering column mechanically adjustable in height and length • Mercedes-Benz emergency call system • Radio accessories: Digital radio (DAB) • Radio accessories: Communication module (LTE) for the use of Mercedes me connect services • Travel calculator in the multifunction display • Windscreen wipers with rain sensor • Seats: Coupé seating system with integrated headrests and individual seats in the rear • Cruise control • Pre-installation for vehicle setup • Electronic immobilizer • Central locking with interior switch • Decorative elements in black piano lacquer look |
|--|---|

Extra equipment

- | | |
|--|---|
| <ul style="list-style-type: none"> • KEYLESS-GO (KEYLESS-GO access and driving authorization system - electronic vehicle key: communicates with the vehicle within 2 meters of the respective vehicle door - door handles with chrome inserts) • Package: Advanced Assistance Package (Mirror Package: - Interior and exterior mirrors on the driver's side with automatic dimming - Exterior mirrors left and right with electrical folding - Parking position on the right and ambient lighting in the exterior mirrors Lane Package: - Lane Keeping and Blind Spot Assist - Active Distance Assist DISTRONIC including Active Brake Assist) | <ul style="list-style-type: none"> • Fuel tank with larger volume 66 l • Paint finish: metallic (according to sample card) • Package: Storage (net on the luggage compartment floor, folding box, an additional bag hook on the right side of the luggage compartment, double cup holder in the center console) • Package: Advanced Parking Package (consisting of: Parking package with rear view camera - Positioned in the rear, protected from dirt - Display on the media display: standard and wide-angle view available - Virtual guide lines along the outer contour of the vehicle - Trailer mode) |
|--|---|



- Package: Interior lighting package (exit lights in the doors - front footwell lights and light in the center console storage compartment - lighting of the vanity mirror - front reading lights - LED door handle recess lighting and an unlit glasses compartment in the overhead control panel)
- Package: Comfort package (seat heating for driver and front passenger Seat comfort package for driver and front passenger: - electro-pneumatic 4-way lumbar support with control element on the seat - electric seat cushion tilt adjustment - mechanical seat cushion depth adjustment by 6 cm)
- Separate trunk lid locking (This function allows the trunk to be locked separately using a switch in the glove compartment. If the vehicle is subsequently unlocked centrally using the electronic key, the trunk remains locked and cannot be opened from the outside.)
- Sun visors with additional functions (and a side-pivoting, illuminated vanity mirror). The side-pivoting and extendable sun visors for the driver and front passenger offer protection from disturbing light from the front or sides. A vanity mirror with LED lighting is integrated into each of the inner visors.
- Package: High-End Infotainment Package (Smartphone Integration Package - Apple CarPlay, Android Auto, high-resolution 10.25" media display, COMAND Online, touchpad with controller and LINGUATRONIC voice control system, hard drive navigation with satellite map display, Bluetooth hands-free system, Remote Online, SD interface, 2 USB ports, WLAN/WIFI hotspot, live traffic, office functions in the vehicle, Microsoft Office 365 functionality, concierge service, advanced navigation services including traffic sign assistance).
- Radio accessories: Burmester surround sound system (with 13 speakers and 590 watts of system power. Experience enhanced performance and exclusivity with the legendary Burmester sound. The high-performance speakers produce first-class surround sound. You can optimize this specifically for the front and rear seats, intensifying the listening experience. A quality that's also visible thanks to the high-quality Burmester logo.)
- Auxiliary heating (including auxiliary ventilation in summer)
- Elimination of type designation

Brief expert findings

Documents submitted	At the time of the inspection, the registration certificate Part 2 (letter) was available, but the registration certificate Part 1 (certificate) was not. (Copy)
VIN comparison	The vehicle identification number (VIN) was read from the vehicle and its conformity with the submitted documents was verified during the inspection by the undersigned.
Inspection	The inspection conditions were sufficient for the assessment of the vehicle. Lifting equipment and a pit were available for examining the vehicle.
Test drive	No test drive/maneuvering was carried out during the inspection of the vehicle.
Engine function test	An engine test run was performed.

Value reducing factors

No.	Component group	Description
1	Seat - rear	Seat cover - 2-seater bench (Asche) - Soiled - Clean
2	Rear bumper	Spoiler - Scratch(es) - Smart repair
3	Seat - front	Seat cover - left side - Holes - Smart repair
4	Seat - front	Backrest - left side - Scratch(es) - Smart repair
5	Seat - front	Backrest - right side - Scratch(es) - Smart repair
6	Side panel - rear right side	Side panel (3dellen+minimaler kratzer) - dent(s) - Smart repair
7	Misc.	Inspection / maintenance - Due - Perform
8	Front bumper	Front bumper (+sandstrahleffekt) - Scratch(es) - Paint
9	Rear bumper	Rear bumper - Scratch(es) - Repair and paint

Wear and tear

No.	Component group	Description
1	Bonnet	Bonnet - Scratch(es) - No deduction
2	Side panel - rear left side	Interior trim - Scratch(es) - No deduction
3	Vehicle glazing	Windscreen - Stone chips - No deduction

The vehicle shows signs of wear commensurate with its age and use.



Order/Scope of order

The order was placed to prepare a sales report for the vehicle described. This includes the following:

- Description of core relevant information about the vehicle
- Documentation of equipment features
(Delivery by third-party service providers)
- Documentation of damage, defects, missing parts
- Documentation of previous damage, unrepaired previous damage, repainting
- a brief visual or functional inspection of the equipment details if possible.
(Functional tests of driver assistance systems are not included in the scope of services!)
- a photo documentation of the vehicle

Basis for the order

This product is based on the Alphabet Fuhrpark GmbH guidelines for vehicle returns and valuations. The expert makes the explicit findings in each individual case objectively within the framework of the specified standards based on his or her own expertise.

The vehicle inspection takes place in a disassembled state.

Damage or defects that can only be detected during disassembly/diagnosis work or through advanced knowledge remain within the scope of the prognosis risk. An extended risk exists for concealed defects caused by fraudulent deception and not identifiable by the expert.

Damage or defects resulting from normal use or wear and tear of the vehicle will be accepted according to the applicable standard.

There was no explicit identification or monetary consideration of the expected features within the product.

Features which in their nature and severity slightly exceed normal use but do not constitute unacceptable damage will be documented and identified under signs of use if necessary.

Damage or defects which, according to the underlying standard, can no longer be attributed to normal use or wear and tear are listed in the product under "Depreciating Factors".

Depending on the product specification, a monetary ID can be provided. If this takes place, the costs can be 100% d or pro rata depending on the vehicle's age and mileage.

Previous damages

Apparently, no repaired previous damage could be found on the vehicle.



Figure 1: Diagonal front (left)



Figure 2: Diagonal front (right)



Figure 3: Diagonal rear (left)



Figure 4: Diagonal rear (right)



Figure 5: Interior - front



Figure 6: Interior - rear



Figure 7: Instrument cluster



Figure 8: Instrument panel



Figure 9: interior 360° view



Figure 10: Cargo area



Figure 11: VIN



Figure 12: Mounted tyres



Figure 13: Documents



Figure 14: Additional tyres



Figure 15: Navigation



Figure 16: Misc.



Figure 17: Misc.



Figure 18: Misc.



Figure 19: Misc.



Figure 20: Misc.



Figure 21: Misc.



Figure 22: Misc.



Figure 23: Misc.



Figure 24: Misc.



Figure 25: Misc.



Figure 26: Misc.



Figure 27: Misc.



Figure 28: Misc.



Figure 29: Misc.

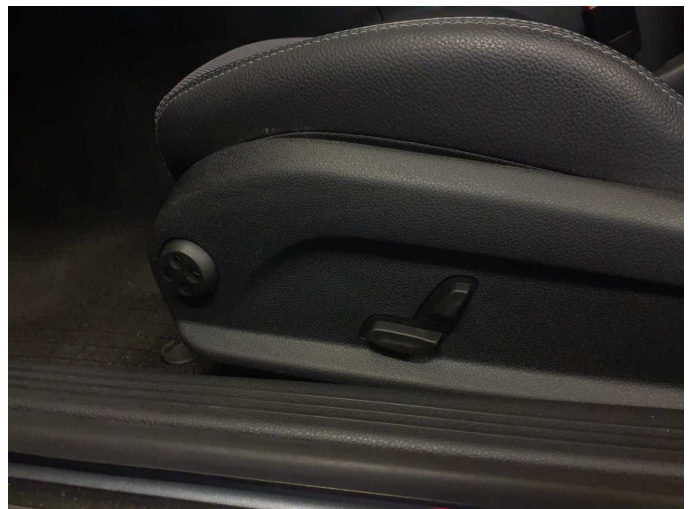
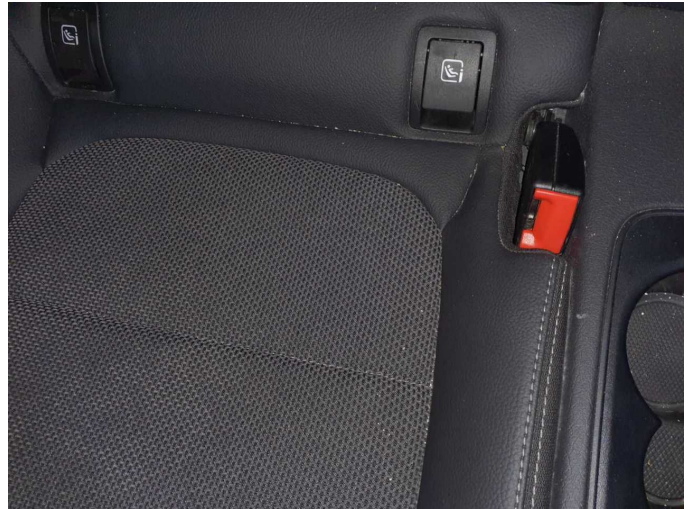


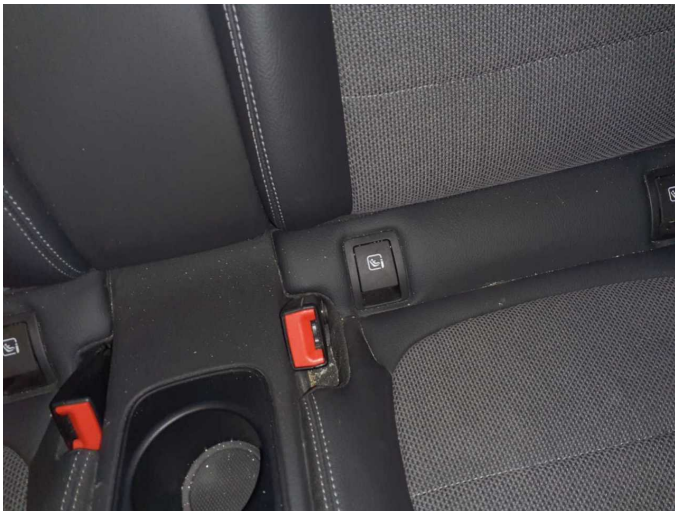
Figure 30: Misc.



Damage 1: Seat - rear: Seat cover - 2-seater bench (Asche) - Soiled - Clean



Damage 1: Seat - rear: Seat cover - 2-seater bench (Asche) - Soiled - Clean



Damage 1: Seat - rear: Seat cover - 2-seater bench (Asche) - Soiled - Clean



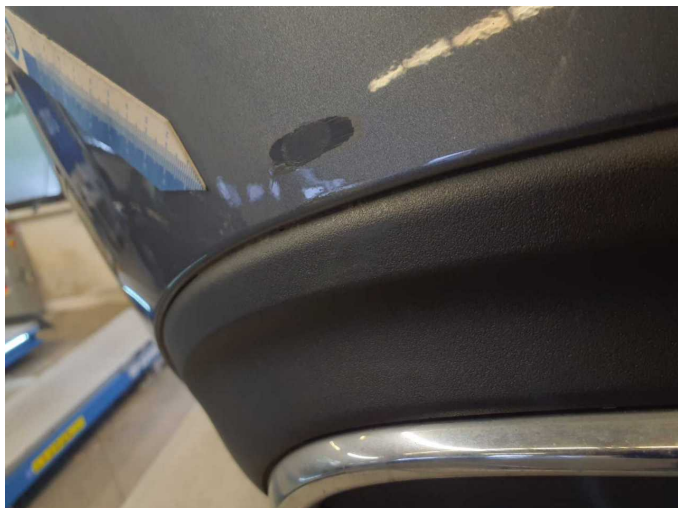
Damage 1: Seat - rear: Seat cover - 2-seater bench (Asche) - Soiled - Clean



Damage 1: Seat - rear: Seat cover - 2-seater bench (Asche) - Soiled - Clean



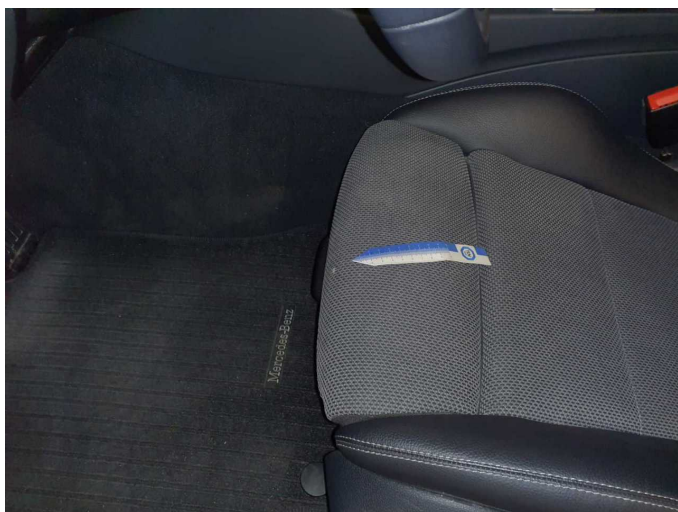
Damage 2: Rear bumper: Spoiler - Scratch(es) - Smart repair



Damage 2: Rear bumper: Spoiler - Scratch(es) - Smart repair



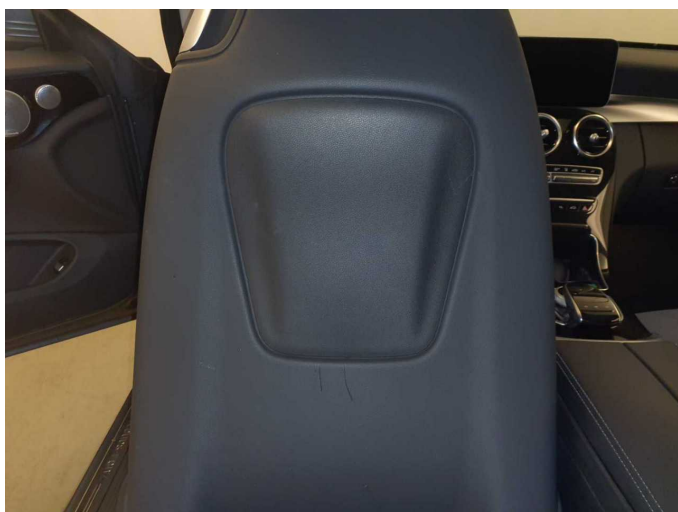
Damage 2: Rear bumper: Spoiler - Scratch(es) - Smart repair



Damage 3: Seat - front: Seat cover - left side - Holes - Smart repair



Damage 3: Seat - front: Seat cover - left side - Holes - Smart repair



Damage 4: Seat - front: Backrest - left side - Scratch(es) - Smart repair



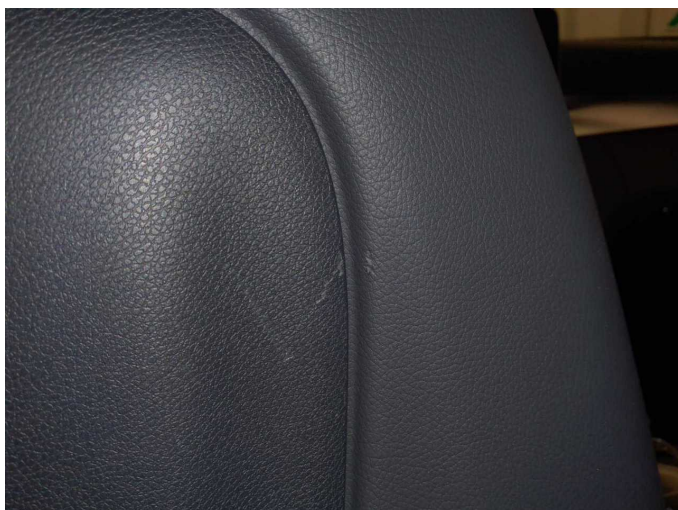
Damage 4: Seat - front: Backrest - left side - Scratch(es) - Smart repair



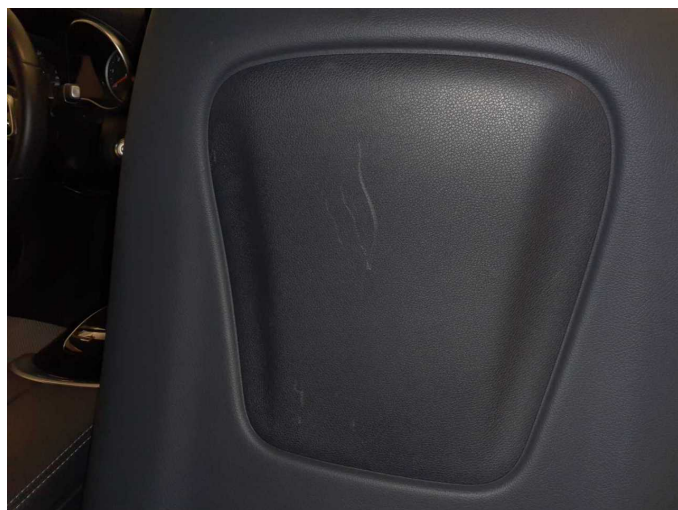
Damage 4: Seat - front: Backrest - left side - Scratch(es) - Smart repair



Damage 4: Seat - front: Backrest - left side - Scratch(es) - Smart repair



Damage 4: Seat - front: Backrest - left side - Scratch(es) - Smart repair



Damage 5: Seat - front: Backrest - right side - Scratch(es) - Smart repair



Damage 5: Seat - front: Backrest - right side - Scratch(es) - Smart repair



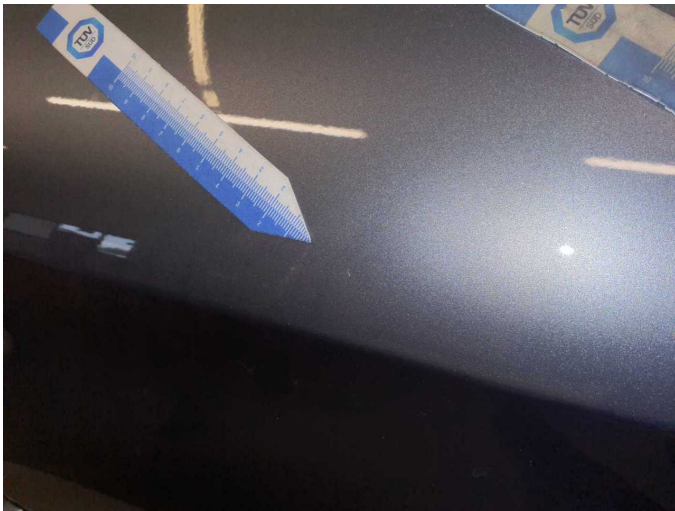
Damage 5: Seat - front: Backrest - right side - Scratch(es) - Smart repair



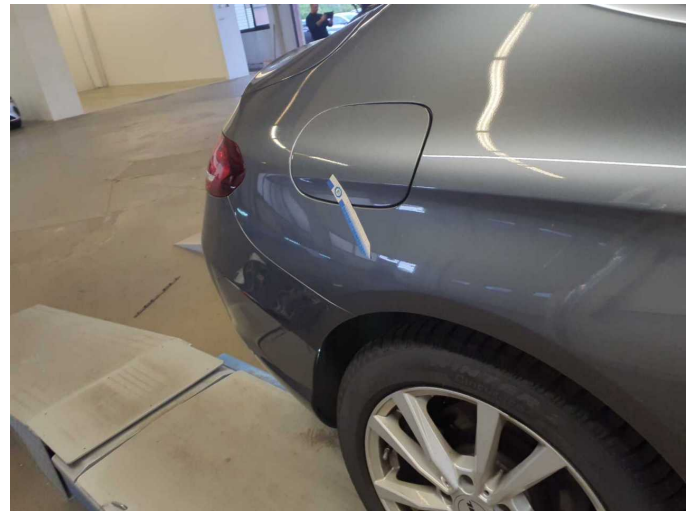
Damage 6: Side panel - rear right side: Side panel (3dellen+minimaler kratzer) - dent(s) - Smart repair



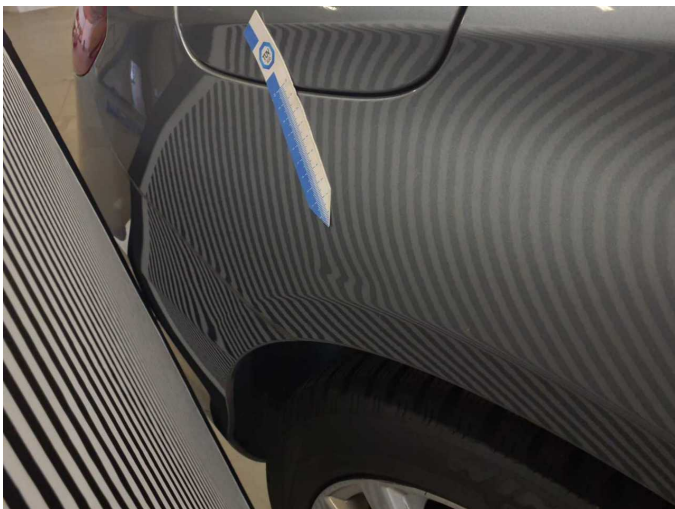
Damage 6: Side panel - rear right side: Side panel (3dellen+minimaler kratzer) - dent(s) - Smart repair



Damage 6: Side panel - rear right side: Side panel (3dellen+minimaler kratzer) - dent(s) - Smart repair



Damage 6: Side panel - rear right side: Side panel (3dellen+minimaler kratzer) - dent(s) - Smart repair



Damage 6: Side panel - rear right side: Side panel (3dellen+minimaler kratzer) - dent(s) - Smart repair



Damage 6: Side panel - rear right side: Side panel (3dellen+minimaler kratzer) - dent(s) - Smart repair



Damage 7: Misc.: Inspection / maintenance - Due - Perform



Damage 8: Front bumper: Front bumper (+sandstrahleffekt) - Scratch(es) - Paint



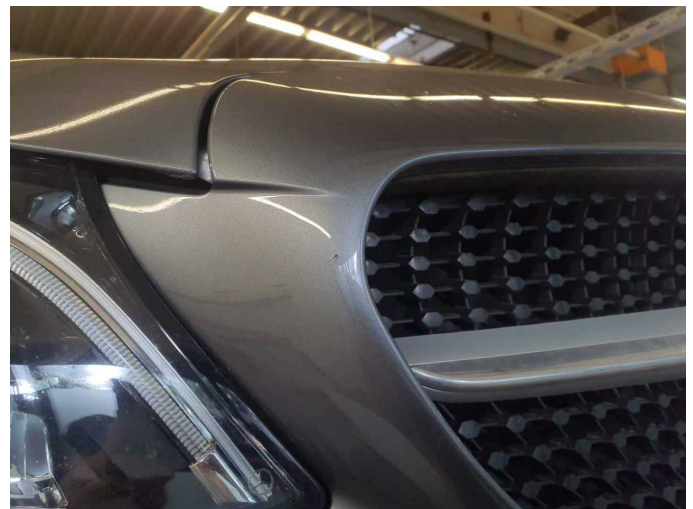
Damage 8: Front bumper: Front bumper (+sandstrahleffekt) - Scratch(es) - Paint



Damage 8: Front bumper: Front bumper (+sandstrahleffekt) - Scratch(es) - Paint



Damage 8: Front bumper: Front bumper (+sandstrahleffekt) - Scratch(es) - Paint



Damage 8: Front bumper: Front bumper (+sandstrahleffekt) - Scratch(es) - Paint



Damage 8: Front bumper: Front bumper (+sandstrahleffekt) - Scratch(es) - Paint



Damage 8: Front bumper: Front bumper (+sandstrahleffekt) - Scratch(es) - Paint



Damage 9: Rear bumper: Rear bumper - Scratch(es) - Repair and paint



Damage 9: Rear bumper: Rear bumper - Scratch(es) - Repair and paint



Damage 9: Rear bumper: Rear bumper - Scratch(es) - Repair and paint