



Expertise

Protocol number: 41219064  
Order No. / Reference: 25064855  
Inspection date: 21 Aug 2025

Manufacturer: Mercedes-Benz	Model: C 220 d Coupe 9G-TRONIC AMG Line
VIN: W1K2053141G054862	



Vehicle details	
Manufacturer / Type / Model / Equipment	
Mercedes-Benz C 220 d Coupe 9G-TRONIC AMG Line	
Vehicle Identification number	W1K2053141G054862
Mileage (Read)	182,636 km
First registration	9 Apr 2021
Number of holders	1
Power / Engine displacement	143 kw / 1,950 ccm
Fuel type / Cylinder	Diesel / 4
Gearbox / Number of gears	Automatic / 9
Type of drive	Rear drive
Type of vehicle	Coupe
Colour / colour code	SELENITGRAU - METALLKLACK
Doors / Seats	2 / 4
Upholstery type	Alcantara / Leather
Colour of upholstery	Black-Anthracite



## Vehicle details

<b>Maintenance booklet / proof</b>	digital proof / complete	<b>Next maintenance in</b>	200 km
<b>Last maintenance on / at</b>	01/2025 at 155,897 km		
<b>Key is / should be</b>	2 / 2	<b>FZG documents</b>	ZB#2 (B) was available (copy), ZB#1 (S) was not available
		<b>Letter No.</b>	FX685927
<b>Previous damage / Accident</b>	Detectable	<b>Repainting</b>	None detectable
<b>Inspection conditions</b>	sufficient	<b>Lifting equipment / pit</b>	yes
<b>Test drive</b>	Not performed	<b>Engine function test</b>	Performed
<b>Manufacturer key number/ type code number</b>	2222 / AMK 00104		
<b>Emission standard</b>	EURO6;WLTP;AP;PI/CI; M, N1 I	<b>Fine dust sticker</b>	
<b>Permitted total weight</b>	2,085 kg	<b>Empty weight</b>	

## Tyres

### Mounted tyres

#	Tyre size	Type of tyre	Manufacturer	Tread depth
1)	225/40 R19 93Y	Summer tires (with run-flat tires) on Light alloy	Pirelli	6mm / 6mm
2)	255/35 R19 96Y	Summer tires (with run-flat tires) on Light alloy	Pirelli	5mm / 4mm

### Additional tyres

#	Tyre size	Type of tyre	Manufacturer	Tread depth
1)	225/50 R17 94H	Winter tyres on Light alloy	Goodyear	6mm / 6mm
2)	225/50 R17 94H	Winter tyres on Light alloy	Goodyear	6mm / 6mm

**Legend:** Tread depth information for tires on the left is in the first place, for tires on the right is in the second place on the axle in the direction of travel

## Equipment

### Standard equipment

- ADAPTIVE BRAKE with hill start assist, pre-filling and dry braking in wet conditions
- AMG sports pedal system made of brushed stainless steel with rubber studs
- Armrest for driver and passenger foldable with compartment
- Brake Assist, Active
- Brake system with larger brake discs on the front axle
- Third brake light in LED technology
- ECO start-stop function
- Electronic Stability Program (ESP) with Crosswind Assist
- Electric window lifter with comfort operation and anti-pinch protection, 2-way
- Luggage net on the side of the trunk left with two hooks
- Illuminated and lockable glove compartment
- Heated rear window with timer control
- ISOFIX child seat attachment in the rear
- Climate: THERMATIC automatic climate control with 2 climate zones
- LED high-performance headlights
- Steering column mechanically adjustable in height and length
- Package: Interior lighting package
- Radio accessories: Digital radio (DAB)
- Radio: Audio 20 GPS
- Radio accessories: Speaker with 5-way front bass
- Tire pressure monitoring
- Windscreen wipers with rain sensor
- Seats: Rear seat backrests foldable 40/20/40 split and comfort controls in the trunk
- Pre-installation for vehicle monitoring
- High-visibility vest for drivers
- Green heat-insulating glass all around including rear window made of toughened safety glass
- Airbag: Automatic passenger airbag deactivation
- Airbags Coupe
- AMG styling
- Anti-lock braking system (ABS)
- ATTENTION ASSIST (the attention assistant)
- Exterior mirrors left and right heated, electrically adjustable from the inside
- diesel particulate filter
- DYNAMIC SELECT for selecting the different driving programs
- Driving light assistant
- Pedestrian protection (active bonnet)
- Floor mats in black with AMG lettering
- Transmission: Automatic 9-speed, 9G-TRONIC
- Rear lights with LED technology
- Interior headliner fabric black
- KEYLESS-GO start function
- Remote trunk lid unlocking via vehicle key
- Instrument cluster with 2 tube-shaped round instruments
- Steering wheel: Supersport steering wheel - deep-embossed leather
- Mercedes-Benz emergency call system
- Upholstery: ARTICO man-made leather/DINAMICA microfiber
- Radio accessories: Communication module (LTE) for the use of Mercedes me connect services
- Travel calculator in the multifunction display
- Seats: Coupé seating system with integrated headrests and individual seats in the rear
- Cruise control
- Pre-installation for vehicle setup
- Electronic immobilizer
- Central locking with interior switch

### Extra equipment

- Ambient lighting (With a total of 64 colors, the ambient lighting offers almost unlimited lighting possibilities and has the right color for every situation. Illuminated door sills on the driver and passenger sides.)
- Trunk lid comfort closing (This function allows the trunk lid to be opened and closed by pressing a button in the driver's door or on the trunk lid)
- Fuel tank with larger volume 66 l
- Paint finish: metallic (according to sample card)
- Package: Storage (net on the luggage compartment floor, folding box, an additional bag hook on the right side of the luggage compartment, double cup holder in the center console)
- Trailer hitch with ESP trailer stabilization and electric release
- Suspension: DYNAMIC BODY CONTROL suspension with adjustable damping (One suspension - three setups: With DYNAMIC BODY CONTROL, you can choose between maximum agility or high damping comfort. To suit your route and personal driving style. The low suspension ride and the Sport Direct-Steer system offer the best conditions for a particularly dynamic driving style.)
- Package: Advanced Assistance Package (Mirror Package: - Interior and exterior mirrors on the driver's side with automatic dimming - Exterior mirrors left and right with electrical folding - Parking position on the right and ambient lighting in the exterior mirrors Lane Package: - Lane Keeping and Blind Spot Assist - Active Distance Assist DISTRONIC including Active Brake Assist)



- Package: Advanced Infotainment Package (Smartphone integration package consisting of Apple CarPlay and Android Auto, media display with high-resolution media display in 16:9 format with 10.25" screen diagonal, SD card navigation, live traffic information)
- Package: Comfort package (seat heating for driver and front passenger Seat comfort package for driver and front passenger: - electro-pneumatic 4-way lumbar support with control element on the seat - electric seat cushion tilt adjustment - mechanical seat cushion depth adjustment by 6 cm)
- Wheels: 48.3 cm (19") AMG light-alloy wheels, 4-spoke design (painted high-gloss black with a high-sheen finish; front: 7.5 J x 19 ET 44, tire size 225/40 R 19, rear: 8.5 J x 19 ET 52, tire size 255/35 R 19 including runflat tires)
- Wheels: Run-flat tires in conjunction with WKR code 2R9, 4R7u LM wheels code 665, 788, R09, R90, 604 (In the event of a flat tire, run-flat tires do not need to be replaced immediately. Continued travel is possible without significant loss of comfort - depending on the load, up to 80 km at a top speed of 80 km/h)
- Auxiliary heating (including auxiliary ventilation in summer)
- Decorative elements wood oak anthracite open-pore
- Package: Advanced Parking Package (consisting of: Parking package with rear view camera - Positioned in the rear, protected from dirt - Display on the media display: standard and wide-angle view available - Virtual guide lines along the outer contour of the vehicle - Trailer mode)
- Package: Night (AMG front and rear windows with high-gloss black trim - diamond grille with silver pins and louvres in high-gloss black - heat-insulating dark-tinted glass from the B-pillar - 45.7 cm (18") AMG light-alloy wheels in 5-spoke design, black and glossy (front axle 225/45 R 18 on 7.5 J x 18 ET 44, rear axle 245/40 R 18 on 8.5 J x 18 ET 49) - outer spokes in high-gloss black - beltline trim strip and window surrounds in high-gloss black)
- Windscreen washer system with heated washer fluid reservoir (heated washer nozzles and washer fluid hoses)
- Sunroof: Panoramic sunroof (electric sunblind and anti-pinch protection)
- Elimination of type designation

## Brief expert findings

Documents submitted	At the time of the inspection, the registration certificate Part 2 (letter) was available, but the registration certificate Part 1 (certificate) was not. (Copy)
VIN comparison	The vehicle identification number (VIN) was read from the vehicle and its conformity with the submitted documents was verified during the inspection by the undersigned.
Inspection	The inspection conditions were sufficient for the assessment of the vehicle. Lifting equipment and a pit were available for examining the vehicle.
Test drive	No test drive/maneuvering was carried out during the inspection of the vehicle.
Engine function test	An engine test run was performed.

## Value reducing factors

No.	Component group	Description
1	Trim / covers	Floor mats (VL) - Holes - Replace
2	Trim / covers	Cargo area - lining -left side - Loose - Un- / install
3	Door - front right side	Door edge - Scratch(es) - Smart repair
4	Front bumper	Front bumper - Scratch(es) - Smart repair
5	Side panel - rear right side	Side panel - Scratch(es) - Smart repair
6	Sill - right side	Trim - Scratched - Smart repair
7	Roof	Cowl - right side - Corrosion - Replace
8	Wheel / tyres	Alloy rim - rear left side - Scratch(es) - Loss in value
9	Wheel / tyres	Alloy rim - rear right side - Scratch(es) - Loss in value
10	Wheel / tyres	Alloy rim - front left side - Scratch(es) - Measure
11	Rear bumper	Rear bumper - Scratch(es) - Paint
12	Bonnet	Bonnet - Stone chips - Paint

## Wear and tear



No.	Component group	Description
1	Seat - front	Backrest cover - right side - Scratch(es) - No deduction
2	Vehicle glazing	Windscreen - Stone chips - No deduction
3	Headlight	Headlight - right side - Stone chips - No deduction
4	Headlight	Headlight - left side - Stone chips - No deduction
5	Body	A-pillar - right side - Stone chips - No deduction
6	Door - front left side	Door edge - Scratch(es) - No deduction
7	Trim / covers	Door trim - front left side - dent(s) - No deduction

The vehicle shows signs of wear commensurate with its age and use.

## Missing parts

### Description

Multimedia system - Navigation data storage

## Previous damages

No.	Previous damage	Extent of damage (Net)
1	Front, Provided by user / customer, from 19 Apr 2023	1.096,29 €

## Order/Scope of order

The order was placed to prepare a sales report for the vehicle described. This includes the following:

- Description of core relevant information about the vehicle
- Documentation of equipment features  
(Delivery by third-party service providers)
- Documentation of damage, defects, missing parts
- Documentation of previous damage, unrepaired previous damage, repainting
- a brief visual or functional inspection of the equipment details if possible.  
(Functional tests of driver assistance systems are not included in the scope of services!)
- a photo documentation of the vehicle

## Basis for the order

This product is based on the Alphabet Fuhrpark GmbH guidelines for vehicle returns and valuations. The expert makes the explicit findings in each individual case objectively within the framework of the specified standards based on his or her own expertise.

The vehicle inspection takes place in a disassembled state.

Damage or defects that can only be detected during disassembly/diagnosis work or through advanced knowledge remain within the scope of the prognosis risk. An extended risk exists for concealed defects caused by fraudulent deception and not identifiable by the expert.

Damage or defects resulting from normal use or wear and tear of the vehicle will be accepted according to the applicable standard.

There was no explicit identification or monetary consideration of the expected features within the product.

Features which in their nature and severity slightly exceed normal use but do not constitute unacceptable damage will be documented and identified under signs of use if necessary.

Damage or defects which, according to the underlying standard, can no longer be attributed to normal use or wear and tear are listed in the product under "Depreciating Factors".

Depending on the product specification, a monetary ID can be provided. If this takes place, the costs can be 100% d or pro rata depending on the vehicle's age and mileage.



## Previous damages

According to available information previous damages were repaired at the vehicle. Traces of repairs, which allow conclusions about the area of repair, were not recognizable during the inspection.

## Comments

- Winterradsatz ist kein Bestandteil des Auslieferungsumfangs



Figure 1: Diagonal front (left)



Figure 2: Diagonal front (right)



Figure 3: Diagonal rear (left)



Figure 4: Diagonal rear (right)



Figure 5: Interior - front



Figure 6: Interior - rear



Figure 7: Instrument cluster



Figure 8: Instrument panel



Figure 9: interior 360° view



Figure 10: Cargo area



Figure 11: VIN



Figure 12: Mounted tyres

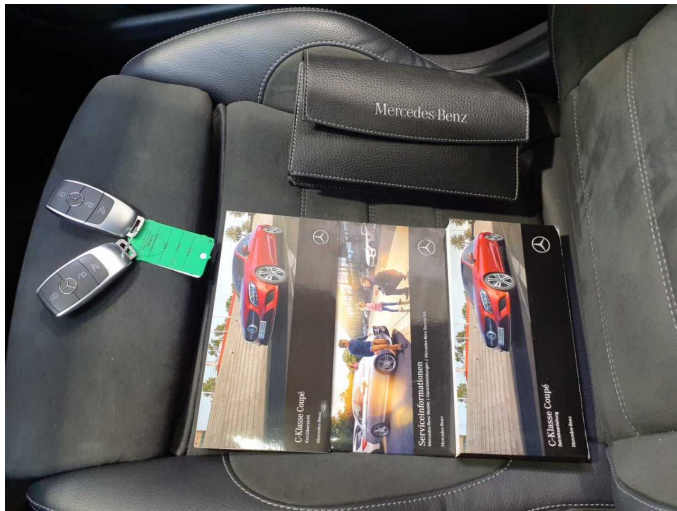


Figure 13: Documents

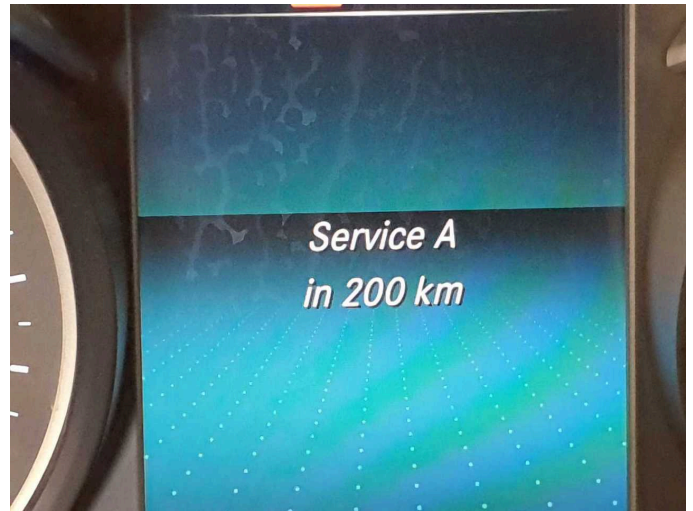


Figure 14: Documents



Figure 15: Additional tyres



Figure 16: Misc.

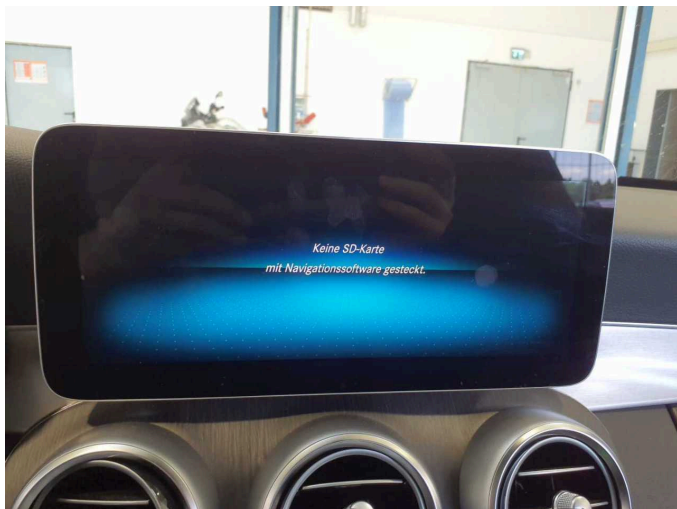


Figure 17: Misc.



Figure 18: Misc.



Figure 19: Misc.



Figure 20: Misc.



Figure 21: Misc.



Figure 22: Misc.



Figure 23: Misc.



Figure 24: Misc.



**Figure 25:** Misc.



**Damage 1:** Trim / covers: Floor mats (VL) - Holes - Replace



**Damage 1:** Trim / covers: Floor mats (VL) - Holes - Replace



**Damage 2:** Trim / covers: Cargo area - lining -left side - Loose - Un- / install



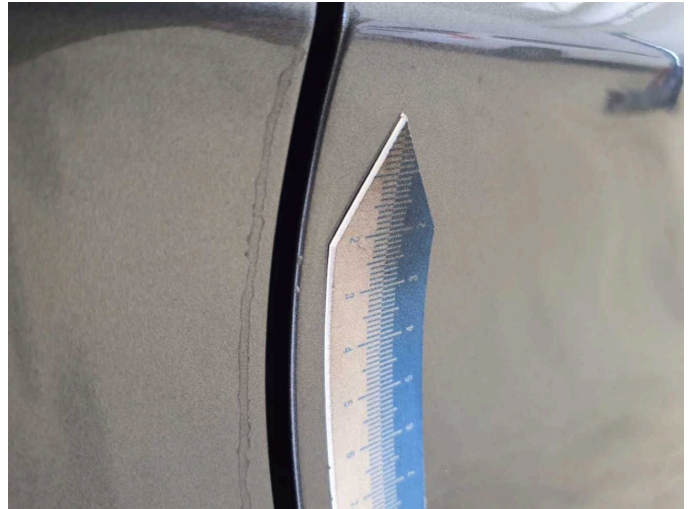
**Damage 2:** Trim / covers: Cargo area - lining -left side - Loose - Un- / install



**Damage 3:** Door - front right side: Door edge - Scratch(es) - Smart repair



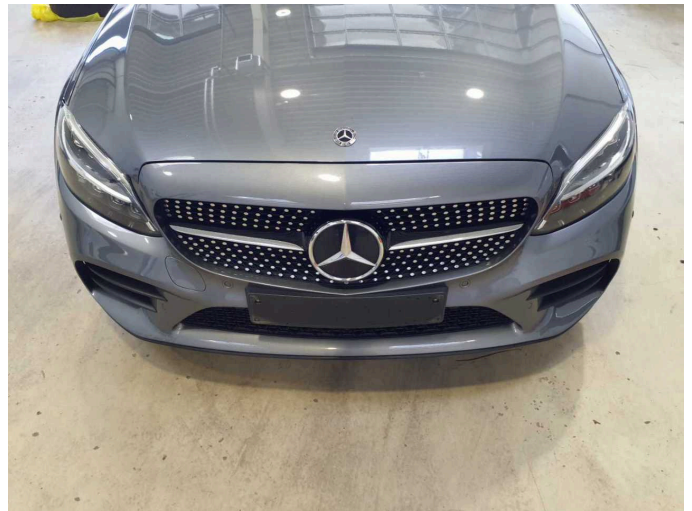
**Damage 3:** Door - front right side: Door edge - Scratch(es) - Smart repair



**Damage 3:** Door - front right side: Door edge - Scratch(es) - Smart repair



**Damage 4:** Front bumper: Front bumper - Scratch(es) - Smart repair



**Damage 4:** Front bumper: Front bumper - Scratch(es) - Smart repair



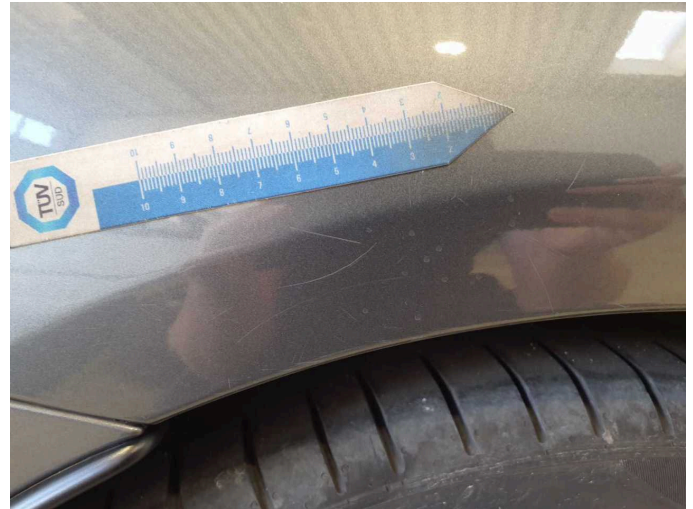
**Damage 4:** Front bumper: Front bumper - Scratch(es) - Smart repair



**Damage 4:** Front bumper: Front bumper - Scratch(es) - Smart repair



**Damage 5:** Side panel - rear right side: Side panel - Scratch(es) - Smart repair



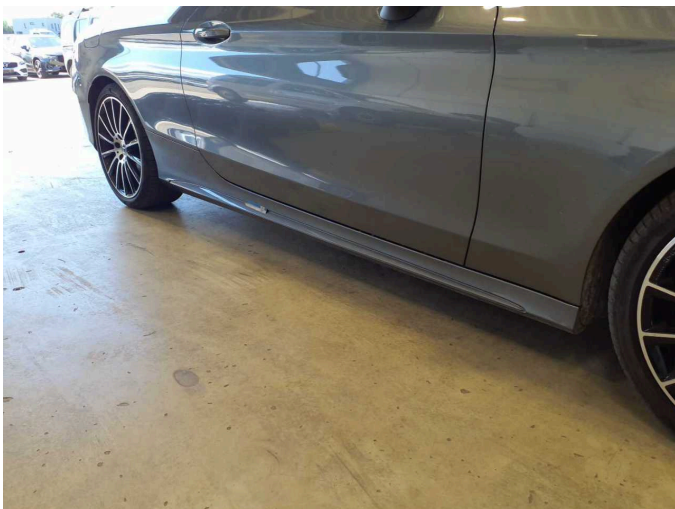
**Damage 5:** Side panel - rear right side: Side panel - Scratch(es) - Smart repair



**Damage 5:** Side panel - rear right side: Side panel - Scratch(es) - Smart repair



**Damage 6:** Sill - right side: Trim - Scratched - Smart repair



**Damage 6:** Sill - right side: Trim - Scratched - Smart repair



**Damage 7:** Roof: Cowl - right side - Corrosion - Replace



**Damage 7:** Roof: Cowl - right side - Corrosion - Replace



**Damage 8:** Wheel / tyres: Alloy rim - rear left side - Scratch(es) - Loss in value



**Damage 8:** Wheel / tyres: Alloy rim - rear left side - Scratch(es) - Loss in value



**Damage 8:** Wheel / tyres: Alloy rim - rear left side - Scratch(es) - Loss in value



**Damage 8:** Wheel / tyres: Alloy rim - rear left side - Scratch(es) - Loss in value



**Damage 9:** Wheel / tyres: Alloy rim - rear right side - Scratch(es) - Loss in value



**Damage 9:** Wheel / tyres: Alloy rim - rear right side - Scratch(es) - Loss in value



**Damage 9:** Wheel / tyres: Alloy rim - rear right side - Scratch(es) - Loss in value



**Damage 9:** Wheel / tyres: Alloy rim - rear right side - Scratch(es) - Loss in value



**Damage 10:** Wheel / tyres: Alloy rim - front left side - Scratch(es) - Measure



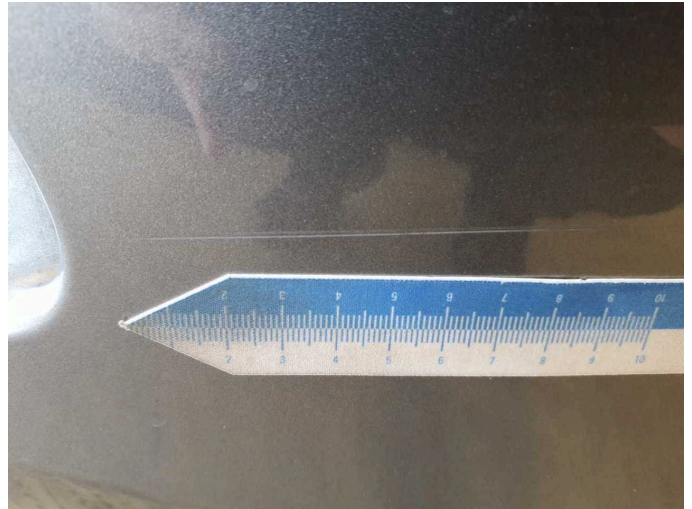
**Damage 10:** Wheel / tyres: Alloy rim - front left side - Scratch(es) - Measure



**Damage 10:** Wheel / tyres: Alloy rim - front left side - Scratch(es) - Measure



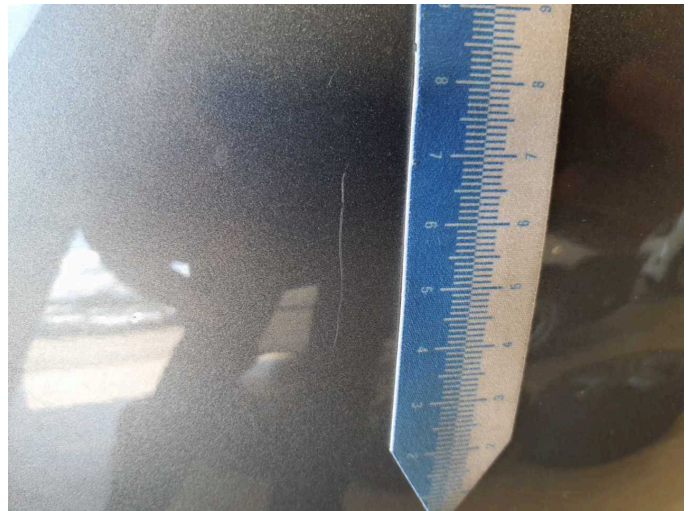
**Damage 10:** Wheel / tyres: Alloy rim - front left side - Scratch(es) - Measure



**Damage 11:** Rear bumper: Rear bumper - Scratch(es) - Paint



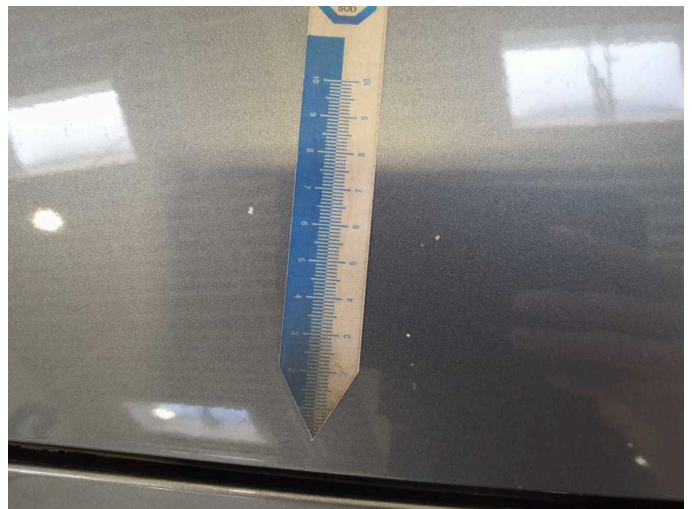
**Damage 11:** Rear bumper: Rear bumper - Scratch(es) - Paint



**Damage 11:** Rear bumper: Rear bumper - Scratch(es) - Paint



**Damage 12:** Bonnet: Bonnet - Stone chips - Paint



**Damage 12:** Bonnet: Bonnet - Stone chips - Paint



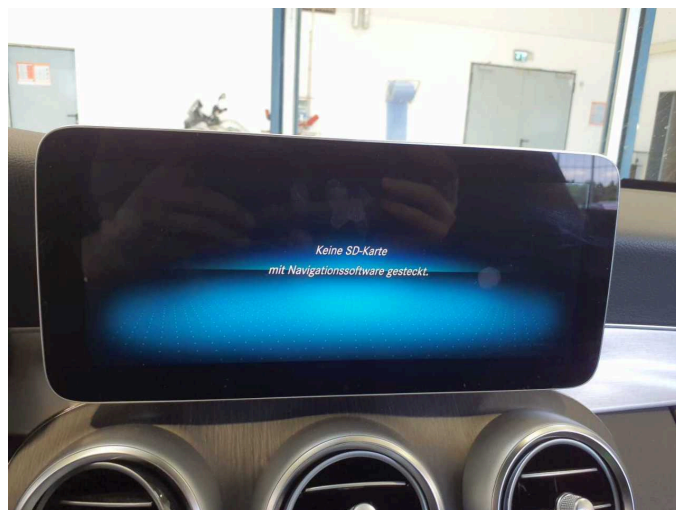
**Damage 12:** Bonnet: Bonnet - Stone chips - Paint



**Damage 12:** Bonnet: Bonnet - Stone chips - Paint



**Damage 12:** Bonnet: Bonnet - Stone chips - Paint



**Missing part 1:** Multimedia system: Navigation data storage - Missing - Replace



# Wartungshistorie

(gemäß Auftraggeber Informationen)

Fahrgestellnummer: W1K2053141G054862

Hersteller / Modell: MERCEDES-BENZ MB C 220 d Coupe 9G-TRONIC AMG Line

Datum	KM-Stand	Beschreibung
17.01.2025	155.897	Regelwartungsdienst
27.06.2024	134.229	Regelwartungsdienst
12.04.2024	126.397	HU + AU
09.10.2023	109.704	Bremsscheiben+Beläge v+h; Regelwartungsdienst
09.02.2023	81.056	Regelwartungsdienst
08.07.2022	54.566	Bremsklötze hinten; Regelwartungsdienst
20.10.2021	26.009	Kleine Inspektion