



Expertise

Protocol number: 40841963
Order No. / Reference: 24983027
Inspection date: 31 Jul 2025

Manufacturer: Mercedes-Benz

Model: C 300 e T 9G-TRONIC Avantgarde

VIN: W1K2052531G065202



Vehicle details	
Manufacturer / Type / Model / Equipment	
Mercedes-Benz C 300 e T 9G-TRONIC Avantgarde	
Vehicle Identification number	W1K2052531G065202
Mileage (Read)	83,095 km
First registration	16 Dec 2020
Number of holders	1
Next periodical technical inspection	01/2026
(Report not on hand)	
Power / Engine displacement	155 kw / 1,991 ccm
Fuel type / Cylinder	Hybr.B/E ext. edition / 4
Gearbox / Number of gears	Automatic / 9
Type of drive	Rear drive
Type of vehicle	Station wagon
Colour / colour code	Brilliantblau Metallic
Doors / Seats	5 / 5
Upholstery type	Leather
Colour of upholstery	Black-Anthracite
Re/Import	no
Driving readiness	Roadworthy



Vehicle details

Maintenance booklet / proof	digital proof / complete	Next maintenance in	187 Tag(e)
Last maintenance on / at	01/2024 at 56,729 km		
Key is / should be	2 / 2	FZG documents	ZB#2 (B) was available (copy), ZB#1 (S) was not available
		Letter No.	FX724828
Previous damage / Accident	Detectable	Repainting	Detectable
Inspection conditions	Sufficient	Lifting equipment / pit	yes
Test drive	Not performed	Engine function test	Performed
Driving readiness	Roadworthy		
Manufacturer key number/ type code number	2222 / ALM 00113		
Emission standard	EURO6;WLTP;AP;PI/CI; M, N1 I	Fine dust sticker	
Permitted total weight	2,415 kg	Empty weight	

Tyres

Mounted tyres

#	Tyre size	Type of tyre	Manufacturer	Tread depth
1)	225/45 R18 95V	Winter tyres on Light alloy	Pirelli	5mm / 5mm
2)	245/40 R18 97V	Winter tyres on Light alloy	Pirelli	5mm / 5mm

Additional tyres

#	Tyre size	Type of tyre	Manufacturer	Tread depth
1)	225/45 R18 95Y	Summer tyres on Light alloy	Bridgestone	4mm / 4mm
2)	245/40 R18 97Y	Summer tyres on Light alloy	Bridgestone	4mm / 4mm

Legend: Tread depth information for tires on the left is in the first place, for tires on the right is in the second place on the axle in the direction of travel



Equipment

Standard equipment

- Storage compartment under loading floor
- Airbag
- Airbag: Automatic passenger airbag deactivation
- Armrest for driver and passenger foldable with compartment
- Exterior mirrors left and right heated, electrically adjustable, painted in body color
- Brake system with larger brake discs on the front axle
- Third brake light in LED technology
- ECO start-stop function
- Driving light assistant
- Pedestrian protection (active bonnet)
- Transmission: Automatic 9-speed, 9G-TRONIC
- Heated rear window with timer control
- Rear window wiper with interval control
- Mechanical child safety lock for the rear doors
- Instrument cluster with 2 tube-shaped round instruments
- Charging cable for household socket, 5m, smooth
- Load compartment cover including EASY-PACK safety net
- Steering column mechanically adjustable in height and length
- Mercedes-Benz emergency call system
- Package: AVANTGARDE Exterior
- Radio accessories: Digital radio
- Radio accessories: Communication module (LTE) for the use of Mercedes me connect services
- Windscreen wipers with rain sensor
- Seat belts C-Class
- Seats: ISOFIX child seat attachment with Top Tether in the rear
- Pre-installation for vehicle monitoring
- High-visibility vest for drivers
- Central locking
- ADAPTIVE BRAKE with hill start assist, pre-filling and dry braking in wet conditions
- Anti-lock braking system (ABS)
- Armrest in the rear with compartment and cup holder
- ATTENTION ASSIST (the attention assistant)
- Outside temperature display
- Brake Assist, Active
- tachometer
- DYNAMIC SELECT
- Electronic Stability Program (ESP) with Crosswind Assist
- 4-way electric window lifter
- Luggage net on the side of the trunk on the left
- Halogen headlights with integrated LED daytime running lights
- KEYLESS-GO start function
- Remote trunk lid release
- 5-way headrests for driver and front passenger 4-way adjustable and 2-way in the rear
- Steering wheel: Multifunction sports steering wheel in black leather, 3-spoke design
- Steering: Comfort Direct Steering
- Gasoline particulate filter
- Package: Interior lighting package
- Radio: Audio 20 GPS
- Tire pressure monitoring (TPMS)
- Travel calculator in the multifunction display
- Service interval display ASSYST
- Seats: Rear seat backrests foldable 40/20/40 split
- Seats: Front seats electrically adjustable
- Cruise control with HOLD function
- Pre-installation for vehicle setup
- Electronic immobilizer
- Decorative elements in black piano lacquer look / light aluminium with longitudinal grain

Extra equipment

- Trailer hitch with ESP trailer stabilization and electric release
- Head-up display (View the most important driver information without taking your eyes off the road – this is made possible by the head-up display. It projects a virtual image measuring approximately 21 x 7 cm into the driver's field of vision, which appears to hover about 2 meters in front of them above the hood.)
- EASY-PACK tailgate (with electric opening and closing and electric load compartment blind)
- Interior headliner fabric black
- KEYLESS-GO access and drive authorization system (With this access and drive authorization system, the vehicle can be conveniently opened, started, and locked simply by carrying the electronic key. Includes KEYLESS-GO start function, handle recess lighting, and convenient opening and closing.)
- Paint finish: metallic



- THERMOTRONIC automatic climate control with 3 climate zones (The THERMOTRONIC automatic climate control with 3 climate zones and 3 climate styles enables an individual feel-good climate on board. The driver and front passenger can each determine the temperature, air distribution and climate style according to their personal needs. The third climate zone is in the rear - with separately adjustable temperature and air volume.)
- Package: Advanced Lighting Package (consisting of: LED High Performance headlights including integrated LED daytime running lights, Adaptive High Beam Assist. Whenever the Adaptive High Beam Assist detects no vehicles ahead or oncoming traffic, it switches on the high beam.)
- Package: High-end infotainment package (Smartphone integration package - Apple CarPlay, Android Auto high-resolution media display with 10.25" diagonal COMAND Online - touchpad with controller and voice control system LINGUATRONIC - hard drive navigation with satellite map display - Bluetooth hands-free system - Remote Online - SD interface - 2 USB - WLAN/WIFI hotspot Live Traffic Office functions in the vehicle - Microsoft Office 365 functionality. Concierge service Advanced navigation services including traffic sign assistance)
- Package: Comfort package (seat heating for driver and front passenger Seat comfort package for driver and front passenger: - electro-pneumatic 4-way lumbar support with control element on the seat - electric seat cushion tilt adjustment - mechanical seat cushion depth adjustment by 6 cm)
- Upholstery: ARTICO man-made leather
- Wheels: 45.7 cm (18") 4-spoke light alloy wheels (vanadium silver painted and high-sheen finish, front: 7.5 J x 18 ET 49, tire size 225/45 R 18, rear: 8.5 J x 18 ET 56, tire size 245/40 R 18)
- Heat-insulating dark tinted glass all around from B-pillar
- Decorative elements wood ash black open-pore/aluminium with longitudinal grinding light
- Package: Storage (Luggage net on the side of the trunk on the right side panel, net on the trunk floor, folding box under the loading floor, double cup holder in the center console for 2 x 500 ml (with 6-speed manual transmission), double cup holder in the center console for 2 x 750 ml (with automatic transmission), luggage net in the passenger footwell, map pockets on the back of the front seats, 2 USB ports with charging function)
- Package: High-End Assistance Package (Driving Assistance Package: Active Distance Assist DISTRONIC, Active Lane Keeping and Blind Spot Assist, Active Brake Assist with Intersection Function including End-of-Traffic Emergency Braking Function and Evasive Steering Assist PRE-SAFE Plus, Mirror Package: Interior and exterior mirrors on the driver's side automatically dimming, exterior mirrors electrically folding, parking position on the right, ambient lighting in the exterior mirrors, curbside position - automatic lowering of the passenger mirror when reverse gear is engaged)
- Package: High-End Parking Package (12 sensors - Active Parking Assist: Detects parking spaces up to 35 km/h, controls the steering, in conjunction with automatic assists with accelerating, braking, and gear changes - PARKTRONIC: Visual/acoustic warning of detected obstacles in front of/behind the vehicle up to approx. 10 km/h - Rear Cross Traffic Alert provides visual and acoustic warnings when cross traffic is detected - Drive Away Assist (only in conjunction with automatic transmission) - Button on the center console or on the control panel for the assistance systems - 360° camera)
- 230V socket in the rear
- TIREFIT with tire inflation compressor
- Heat- and sound-insulating acoustic glass in conjunction with a head-up display (for the windshield and front doors. Acoustic film replaces the conventional plastic interlayer of laminated safety glass. The acoustic film is specially tuned to absorb high-frequency wind and predominantly low-frequency engine noise.)

Brief expert findings

Documents submitted	At the time of the inspection, the registration certificate Part 2 (letter) was available, but the registration certificate Part 1 (certificate) was not. (Copy)
VIN comparison	The vehicle identification number (VIN) was read and the undersigned verified that it matched the documents submitted during the inspection.
Inspection	The inspection conditions were sufficient for the assessment of the vehicle. Lifting equipment and a pit were available for examining the vehicle.
Test drive	No test drive/maneuvering was carried out during the inspection of the vehicle.
Engine function test	An engine test run was performed.
Driving readiness	The vehicle was drivable at the time of inspection.

Value reducing factors

No.	Component group	Description
1	Trim / covers	Boot lid - interior trim - Scratch(es) - Smart repair
2	Door - front right side	Door - Scratch(es) - Smart repair



No.	Component group	Description
3	Sill - left side	Sill - Scratch(es) - Smart repair
4	Seat - front	Seat cover - left side - Broken / torn - Smart repair
5	Door - rear right side	Door - Scratch(es) - Paint
6	2nd wheel set	2 alloy rims - Scratched - Loss in value
7	Rear bumper	Rear bumper - Scratch(es) - Paint

Wear and tear

No.	Component group	Description
1	Wheel / tyres	Wheel rims - complete set (Montierter) - Scratched - No deduction
2	Bonnet	Bonnet - Stone chips - No deduction
3	Front bumper	Front bumper - Stone chips - No deduction
4	Vehicle glazing	Windscreen - Stone chips - No deduction
5	Interior	Interior - Scratch(es) - No deduction

The vehicle shows signs of wear commensurate with its age and use.

Missing parts

Description

Equipment - Tirefit complete

Previous damages

No.	Previous damage	Extent of damage (Net)
1	Unknown, Provided by user / customer, from 28 May 2023	3.500,00 €
2	Rear, Provided by user / customer, from 8 Mar 2022	5.787,03 €

Repainting

No. Repainting

- Bonnet, Door - front left side, Door - front right side, Professionally carried out, Invoice of repair done Non-existent

Paint coat thickness measurement

Bonnet	238 µm	Door - front left side	171 µm
Door - front right side	222 µm		

Order/Scope of order

The order was placed to prepare a sales report for the vehicle described. This includes the following:

- Description of core relevant information about the vehicle
- Documentation of equipment features
(Delivery by third-party service providers)
- Documentation of damage, defects, missing parts
- Documentation of previous damage, unrepaired previous damage, repainting
- a brief visual or functional inspection of the equipment details if possible.
(Functional tests of driver assistance systems are not included in the scope of services!)
- a photo documentation of the vehicle



Basis for the order

This product is based on the Alphabet Fuhrpark GmbH guidelines for vehicle returns and valuations. The expert makes the explicit findings in each individual case objectively within the framework of the specified standards based on his or her own expertise.

The vehicle inspection takes place in a disassembled state.

Damage or defects that can only be detected during disassembly/diagnosis work or through advanced knowledge remain within the scope of the prognosis risk. An extended risk exists for concealed defects caused by fraudulent deception and not identifiable by the expert.

Damage or defects resulting from normal use or wear and tear of the vehicle will be accepted according to the applicable standard.

There was no explicit identification or monetary consideration of the expected features within the product.

Features which in their nature and severity slightly exceed normal use but do not constitute unacceptable damage will be documented and identified under signs of use if necessary.

Damage or defects which, according to the underlying standard, can no longer be attributed to normal use or wear and tear are listed in the product under "Depreciating Factors".

Depending on the product specification, a monetary ID can be provided. If this takes place, the costs can be 100% d or pro rata depending on the vehicle's age and mileage.

Previous damages

According to available information previous damages were repaired at the vehicle. Traces of repairs, which allow conclusions about the area of repair, were not recognizable during the inspection.

Comments

- Für den montierten Radsatz wurde kein Nachweis erbracht.
- Winterradsatz ist kein Bestandteil des Auslieferungsumfangs.



Figure 1: Diagonal front (left)



Figure 2: Diagonal front (right)



Figure 3: Diagonal rear (left)



Figure 4: Diagonal rear (right)



Figure 5: Interior - front



Figure 6: Interior - rear



Figure 7: Instrument cluster



Figure 8: Instrument panel



Figure 9: interior 360° view



Figure 10: Cargo area



Figure 11: Cargo area



Figure 12: VIN



Figure 13: Mounted tyres



Figure 14: Documents

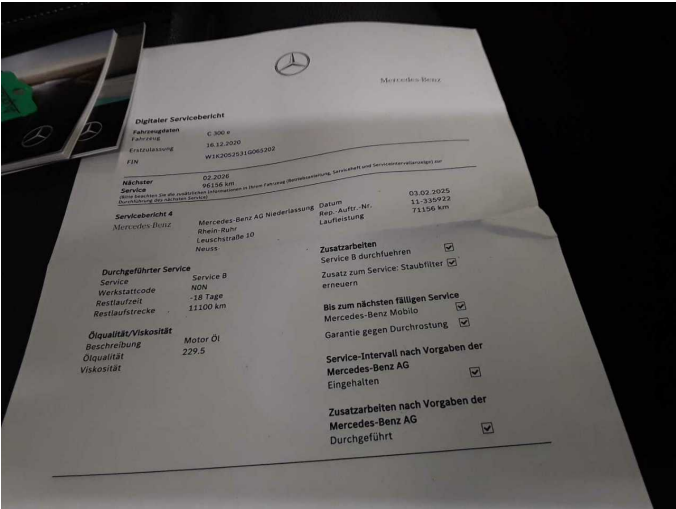


Figure 15: Documents

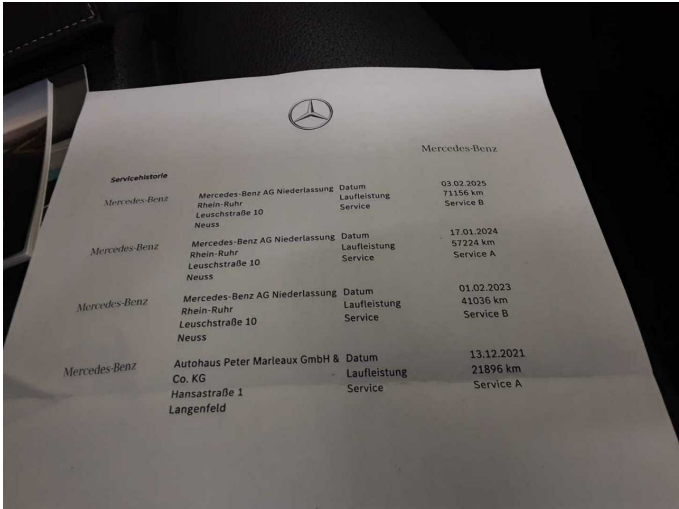


Figure 16: Documents



Figure 17: Additional tyres



Figure 18: Navigation



Figure 19: Misc.



Figure 20: Misc.



Figure 21: Misc.

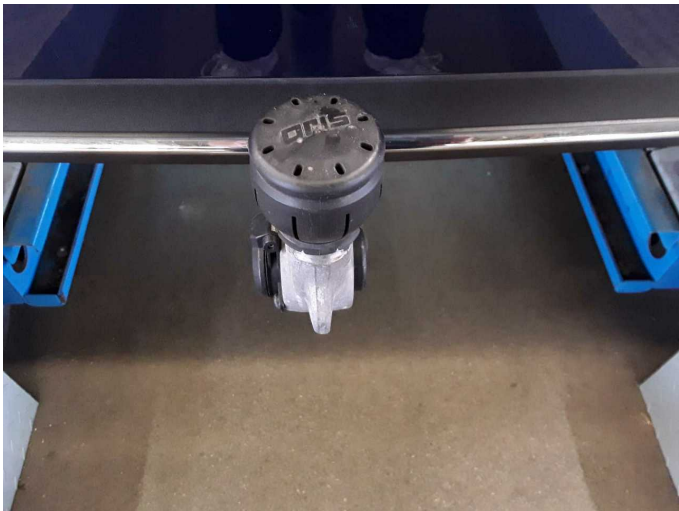


Figure 22: Misc.

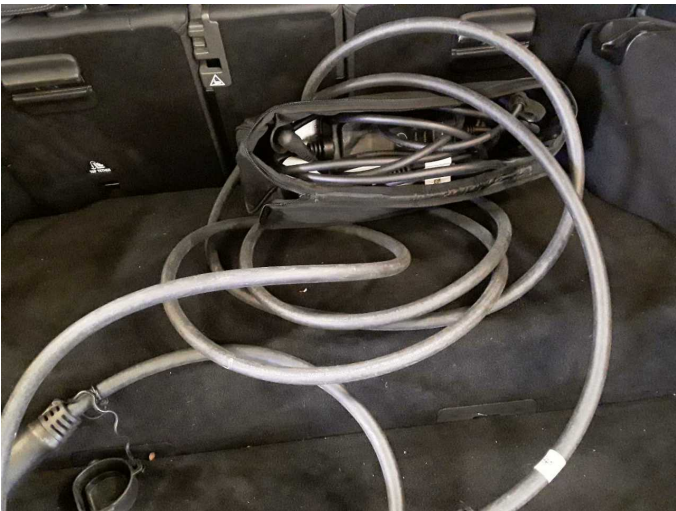


Figure 23: Misc.



Figure 24: Misc.



Figure 25: Misc.



Figure 26: Misc.



Figure 27: Misc.



Figure 28: Misc.



Figure 29: Misc.



Figure 30: Misc.



Figure 31: Misc.



Figure 32: Misc.



Figure 33: Misc.



Figure 34: Misc.

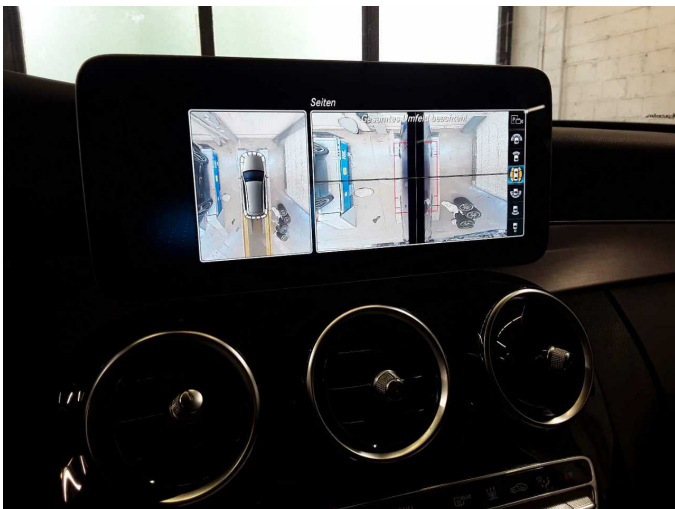


Figure 35: Misc.



Figure 36: Misc.



Figure 37: Misc.



Figure 38: Misc.



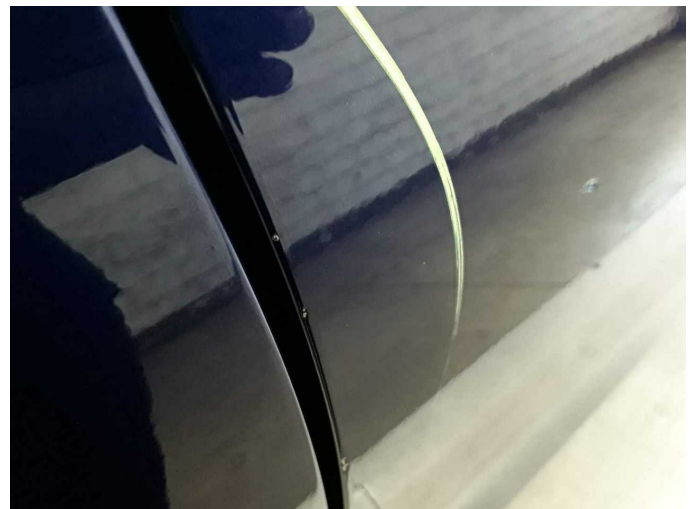
Damage 1: Trim / covers: Boot lid - interior trim - Scratch(es) - Smart repair



Damage 1: Trim / covers: Boot lid - interior trim - Scratch(es) - Smart repair



Damage 2: Door - front right side: Door - Scratch(es) - Smart repair



Damage 2: Door - front right side: Door - Scratch(es) - Smart repair



Damage 2: Door - front right side: Door - Scratch(es) - Smart repair



Damage 3: Sill - left side: Sill - Scratch(es) - Smart repair



Damage 3: Sill - left side: Sill - Scratch(es) - Smart repair



Damage 4: Seat - front: Seat cover - left side - Broken / torn - Smart repair



Damage 4: Seat - front: Seat cover - left side - Broken / torn - Smart repair



Damage 5: Door - rear right side: Door - Scratch(es) - Paint



Damage 5: Door - rear right side: Door - Scratch(es) - Paint



Damage 5: Door - rear right side: Door - Scratch(es) - Paint



Damage 6: 2nd wheel set: 2 alloy rims - Scratched - Loss in value



Damage 6: 2nd wheel set: 2 alloy rims - Scratched - Loss in value



Damage 6: 2nd wheel set: 2 alloy rims - Scratched - Loss in value



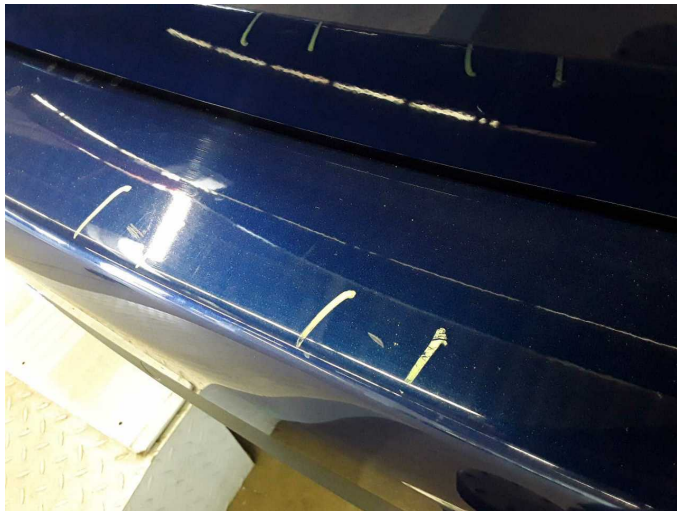
Damage 6: 2nd wheel set: 2 alloy rims - Scratched - Loss in value



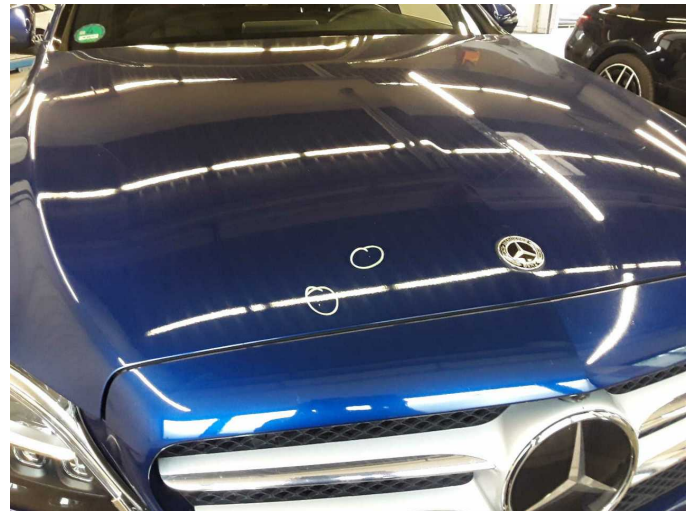
Damage 7: Rear bumper: Rear bumper - Scratch(es) - Paint



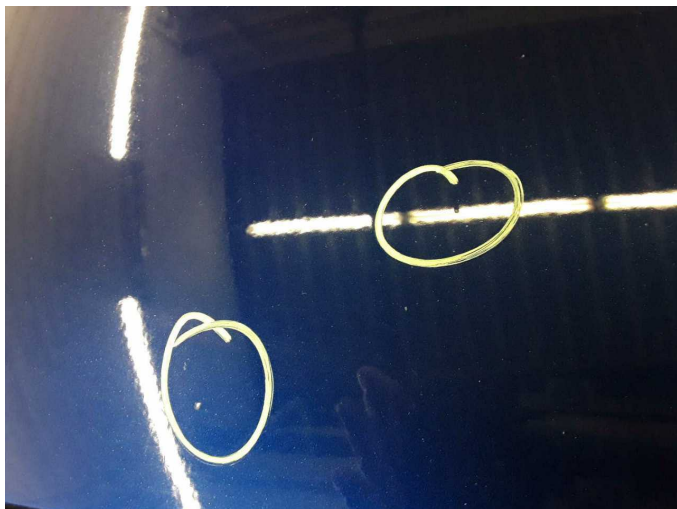
Damage 7: Rear bumper: Rear bumper - Scratch(es) - Paint



Damage 7: Rear bumper: Rear bumper - Scratch(es) - Paint



Wear and tear 2: Bonnet: Bonnet - Stone chips - No deduction



Wear and tear 2: Bonnet: Bonnet - Stone chips - No deduction



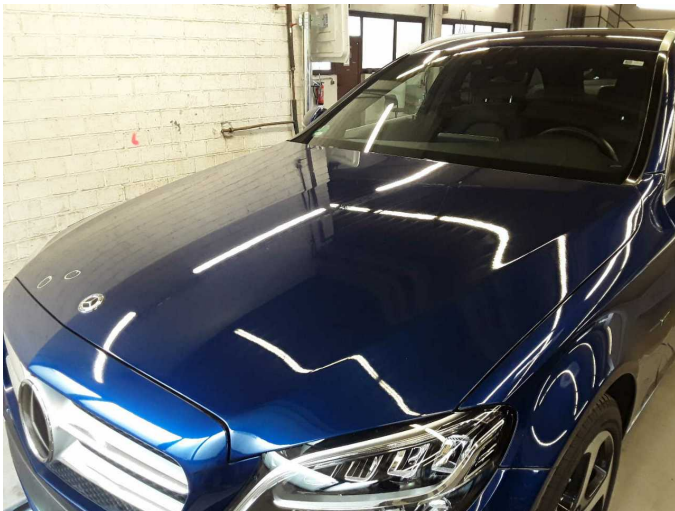
Repainting 1: Bonnet, Door - front left side, Door - front right side



Repainting 1: Bonnet, Door - front left side, Door - front right side



Repainting 1: Bonnet, Door - front left side, Door - front right side



Repainting 1: Bonnet, Door - front left side, Door - front right side



Repainting 1: Bonnet, Door - front left side, Door - front right side



Repainting 1: Bonnet, Door - front left side, Door - front right side



Wartungshistorie

(gemäß Auftraggeber Informationen)

Fahrgestellnummer: W1K2052531G065202

Hersteller / Modell: MERCEDES-BENZ MB C 300 e T 9G-TRONIC Avantgarde

Datum	KM-Stand	Beschreibung
27.01.2025	71.156	Regelwartungsdienst
03.01.2024	56.729	HU + AU; Regelwartungsdienst
06.01.2023	41.036	Bremsklötze hinten; Regelwartungsdienst
13.12.2021	21.896	Kleine Inspektion