



Expertise

Protocol number: 41238750
Order No. / Reference: 25087528
Inspection date: 25 Aug 2025

Manufacturer: Mercedes-Benz	Model: C 300 e T 9G-TRONIC
VIN: W1K2052531G059194	



Vehicle details	
Manufacturer / Type / Model / Equipment	
Mercedes-Benz C 300 e T 9G-TRONIC	
Vehicle Identification number	W1K2052531G059194
Mileage (Read)	92,977 km
First registration	22 Oct 2020
Number of holders	1
Next periodical technical inspection	10/2025
(Report on hand)	
Power / Engine displacement	155 kw / 1,991 ccm
Fuel type / Cylinder	Hybr.B/E ext. edition / 4
Gearbox / Number of gears	Automatic / 9
Type of drive	Rear drive
Type of vehicle	Station wagon
Colour / colour code	Selenitgrau metallic
Doors / Seats	5 / 5
Upholstery type	Cloth
Colour of upholstery	Anthracite-Grey
Vehicle with smoke odor	no



Vehicle details

Maintenance booklet / proof	Non-existent	Next maintenance in	80 Tag(e)
Last maintenance on / at	11/2024 at 86,196 km		
Key is / should be	2 / 2	FZG documents	ZB#2 (B) was available (copy), ZB#1 (S) was not available
		Letter No.	FX695656
Previous damage / Accident	None detectable	Repainting	None detectable
Inspection conditions	sufficient	Lifting equipment / pit	yes
Test drive	Not performed	Engine function test	Performed
Manufacturer key number/ type code number	2222 / ALM 00113		
Emission standard	EURO6;WLTP;AP;PI/CI; M, N1 I	Fine dust sticker	
Permitted total weight	2,415 kg	Empty weight	

Tyres

Mounted tyres

#	Tyre size	Type of tyre	Manufacturer	Tread depth
1)	225/45 R18 95V	Winter tyres on Light alloy	Michelin	6mm / 6mm
2)	245/40 R18 97V	Winter tyres on Light alloy	Michelin	7mm / 7mm

Additional tyres

#	Tyre size	Type of tyre	Manufacturer	Tread depth
1)	225/45 R18 95Y	Summer tyres on Light alloy	Continental	5mm / 5mm
2)	245/40 R18 97Y	Summer tyres on Light alloy	Continental	5mm / 5mm

Legend: Tread depth information for tires on the left is in the first place, for tires on the right is in the second place on the axle in the direction of travel

Equipment

Standard equipment

- Storage compartment under loading floor
- Airbag
- Airbag: Automatic passenger airbag deactivation
- Armrest for driver and passenger foldable with compartment
- Exterior mirrors left and right heated, electrically adjustable, painted in body color
- Brake system with larger brake discs on the front axle
- Third brake light in LED technology
- ECO start-stop function
- Driving light assistant
- Front bumper painted in body color
- Luggage net on the side of the trunk on the left
- Halogen headlights with integrated LED daytime running lights
- Interior headliner fabric crystal grey
- Mechanical child safety lock for the rear doors
- Instrument cluster with 2 tube-shaped round instruments
- 5-way headrests for driver and front passenger 4-way adjustable and 2-way in the rear
- Steering wheel: Multifunction sports steering wheel in black leather, 3-spoke design
- Steering: Comfort Direct Steering
- Gasoline particulate filter
- Upholstery: Aberdeen fabric
- Radio: Audio 20 GPS
- Tire pressure monitoring (TPMS)
- Travel calculator in the multifunction display
- Service interval display ASSYST
- Seats: Rear seat backrests foldable 40/20/40 split
- Seats: Front seats electrically adjustable
- Cruise control with HOLD function
- Pre-installation for vehicle setup
- Electronic immobilizer
- Central locking
- Decorative elements in black piano lacquer look
- ADAPTIVE BRAKE with hill start assist, pre-filling and dry braking in wet conditions
- Anti-lock braking system (ABS)
- Armrest in the rear with compartment and cup holder
- ATTENTION ASSIST (the attention assistant)
- Outside temperature display
- Brake Assist, Active
- tachometer
- DYNAMIC SELECT
- Electronic Stability Program (ESP) with Crosswind Assist
- 4-way electric window lifter
- Pedestrian protection (active bonnet)
- Transmission: Automatic 9-speed, 9G-TRONIC
- Heated rear window with timer control
- Rear window wiper with interval control
- KEYLESS-GO start function
- Climate: THERMATIC automatic climate control with 2 climate zones
- Charging cable for household socket, 5m, smooth
- Load compartment cover including EASY-PACK safety net
- Steering column mechanically adjustable in height and length
- Mercedes-Benz emergency call system
- Package: AVANTGARDE Exterior
- Radio accessories: Digital radio
- Radio accessories: Communication module (LTE) for the use of Mercedes me connect services
- Windscreen wipers with rain sensor
- Seat belts C-Class
- Seats: ISOFIX child seat attachment with Top Tether in the rear
- Pre-installation for vehicle monitoring
- High-visibility vest for drivers
- Green heat-insulating glass all around including rear window made of toughened safety glass

Extra equipment

- Velour floor mats in interior color
- Paint finish: metallic
- Package: Advanced Infotainment Package (Smartphone integration package consisting of Apple CarPlay and Android Auto, media display with high-resolution media display in 16:9 format with 10.25" screen diagonal, SD card navigation, live traffic information)
- THERMOTRONIC automatic climate control with 3 climate zones (The THERMOTRONIC automatic climate control with 3 climate zones and 3 climate styles enables an individual feel-good climate on board. The driver and front passenger can each determine the temperature, air distribution and climate style according to their personal needs. The third climate zone is in the rear - with separately adjustable temperature and air volume.)



- Package: Business (Parking Package - Active Parking Assist - Infotainment Package - Smartphone Integration Package consisting of Apple CarPlay and Android Auto, Media Display with high-resolution media display in 16:9 format with 10.25" screen diagonal - Comfort Package - Heated seats for driver/front passenger, Seat Comfort Package for driver and front passenger: - Electric pneumatic 4-way lumbar support - Electric seat cushion tilt adjustment - Mechanical seat cushion depth adjustment by 6 cm - Fuel tank with larger capacity (not for 300e/de))
- Heat-insulating dark tinted glass all around from B-pillar
- Package: Comfort package (seat heating for driver and front passenger Seat comfort package for driver and front passenger: - electro-pneumatic 4-way lumbar support with control element on the seat - electric seat cushion tilt adjustment - mechanical seat cushion depth adjustment by 6 cm)
- Package: Parking Package (12 sensors - Active Parking Assist: Detects parking spaces up to 35 km/h, controls the steering, in conjunction with automatic assists with accelerating, braking, and gear changes - PARKTRONIC: Visual/acoustic warning of detected obstacles in front of/behind the vehicle up to approx. 10 km/h - Rear Cross Traffic Alert provides visual and acoustic warnings when cross traffic is detected - Drive Away Assist (only in conjunction with automatic transmission) - Button on the center console or on the control panel for the assistance systems)

Brief expert findings

Documents submitted	At the time of the inspection, the registration certificate Part 2 (letter) was available, but the registration certificate Part 1 (certificate) was not. (Copy)
VIN comparison	The vehicle identification number (VIN) was read from the vehicle and its conformity with the submitted documents was verified during the inspection by the undersigned.
Inspection	The inspection conditions were sufficient for the assessment of the vehicle. Lifting equipment and a pit were available for examining the vehicle.
Test drive	No test drive/maneuvering was carried out during the inspection of the vehicle.
Engine function test	An engine test run was performed.

Value reducing factors

No.	Component group	Description
1	Documents	Service book - No evidence - No deduction
2	Rear bumper	Rear bumper - Scratch(es) - Smart repair
3	Side panel - rear right side	Side panel - Dent / paintcoat damage - Smart repair
4	Door - rear right side	Door - Scratch(es) - Smart repair
5	2nd wheel set	2 alloy rims - Scratched - Loss in value

Wear and tear

No.	Component group	Description
1	Roof	Roof - Stone chips - No deduction
2	Wheel / tyres	Alloy rim - front right side - Scratched - No deduction

The vehicle shows signs of wear commensurate with its age and use.



Order/Scope of order

The order was placed to prepare a sales report for the vehicle described. This includes the following:

- Description of core relevant information about the vehicle
- Documentation of equipment features
(*Delivery by third-party service providers*)
- Documentation of damage, defects, missing parts
- Documentation of previous damage, unrepaired previous damage, repainting
- a brief visual or functional inspection of the equipment details if possible.
(*Functional tests of driver assistance systems are not included in the scope of services!*)
- a photo documentation of the vehicle

Basis for the order

This product is based on the Alphabet Fuhrpark GmbH guidelines for vehicle returns and valuations. The expert makes the explicit findings in each individual case objectively within the framework of the specified standards based on his or her own expertise.

The vehicle inspection takes place in a disassembled state.

Damage or defects that can only be detected during disassembly/diagnosis work or through advanced knowledge remain within the scope of the prognosis risk. An extended risk exists for concealed defects caused by fraudulent deception and not identifiable by the expert.

Damage or defects resulting from normal use or wear and tear of the vehicle will be accepted according to the applicable standard.

There was no explicit identification or monetary consideration of the expected features within the product.

Features which in their nature and severity slightly exceed normal use but do not constitute unacceptable damage will be documented and identified under signs of use if necessary.

Damage or defects which, according to the underlying standard, can no longer be attributed to normal use or wear and tear are listed in the product under "Depreciating Factors".

Depending on the product specification, a monetary ID can be provided. If this takes place, the costs can be 100% d or pro rata depending on the vehicle's age and mileage.

Previous damages

Apparently, no repaired previous damage could be found on the vehicle.

Comments

Das Fahrzeug befand sich zum Besichtigungszeitpunkt in beschädigten, nicht demontierten Zustand. Schadenausweitung möglich, Zusatzkosten können entstehen.



Figure 1: Diagonal front (left)



Figure 2: Diagonal front (right)



Figure 3: Diagonal rear (left)



Figure 4: Diagonal rear (right)



Figure 5: Interior - front



Figure 6: Interior - rear



Figure 7: Instrument cluster



Figure 8: Instrument panel



Figure 9: interior 360° view



Figure 10: Cargo area



Figure 11: Cargo area



Figure 12: VIN



Figure 13: Mounted tyres



Figure 14: Documents



Figure 15: Additional tyres

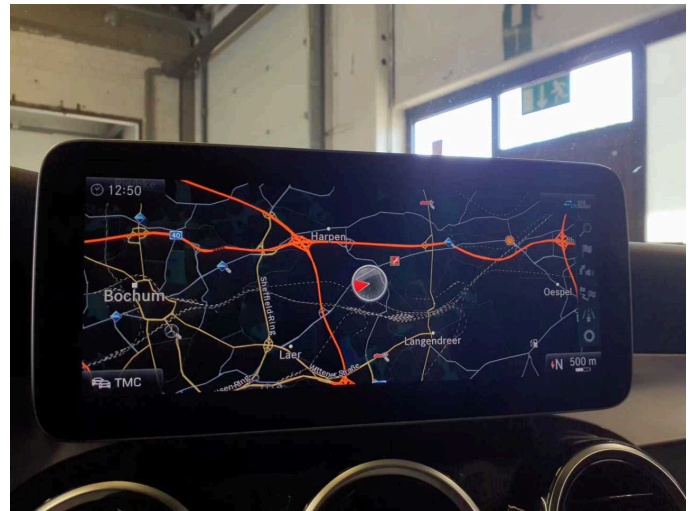


Figure 16: Navigation



Figure 17: Misc.



Figure 18: Misc.



Figure 19: Misc.



Figure 20: Misc.



Figure 21: Misc.



Figure 22: Misc.

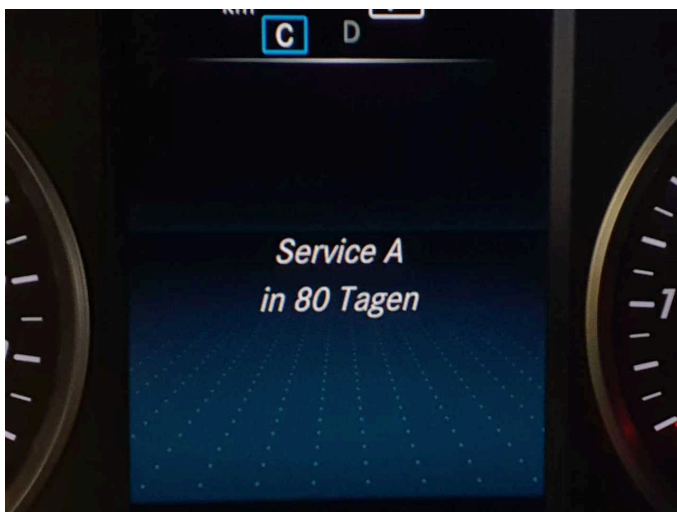


Figure 23: Misc.

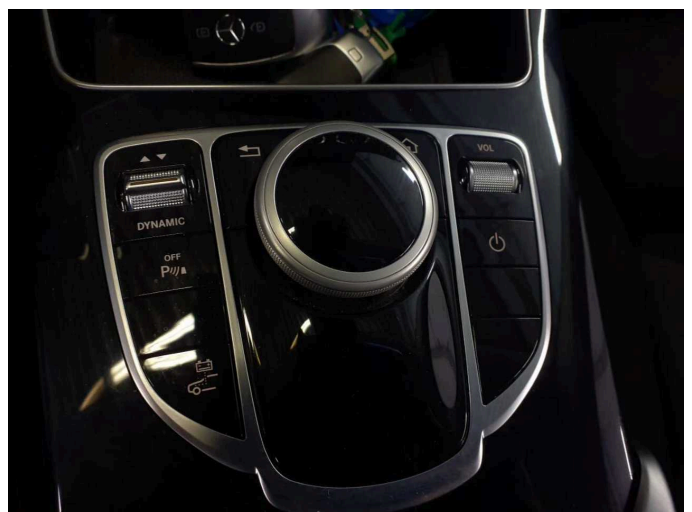


Figure 24: Misc.



Figure 25: Misc.



Figure 26: Misc.

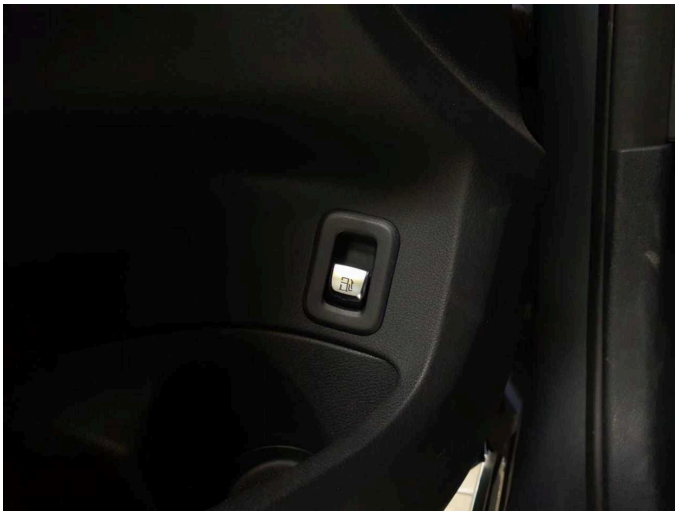


Figure 27: Misc.

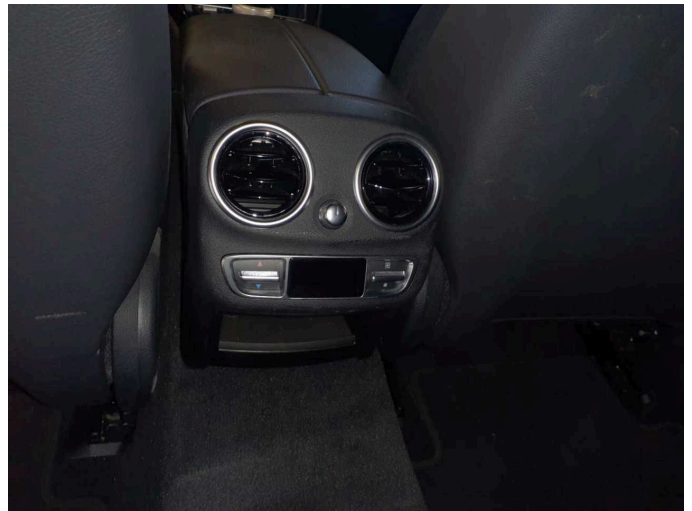


Figure 28: Misc.



Figure 29: Misc.

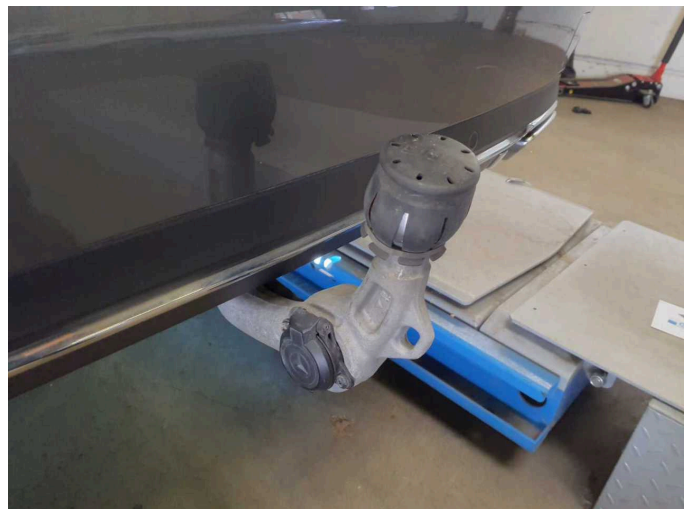


Figure 30: Misc.



Figure 31: Misc.



Figure 32: Misc.



Figure 33: Misc.



Figure 34: Misc.



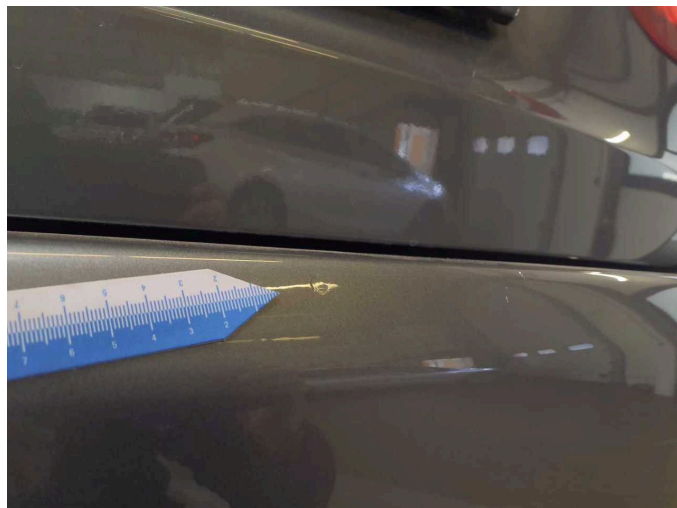
Figure 35: Misc.



Damage 2: Rear bumper: Rear bumper - Scratch(es) - Smart repair



Damage 2: Rear bumper: Rear bumper - Scratch(es) - Smart repair



Damage 2: Rear bumper: Rear bumper - Scratch(es) - Smart repair



Damage 3: Side panel - rear right side: Side panel - Dent / paintcoat damage - Smart repair



Damage 3: Side panel - rear right side: Side panel - Dent / paintcoat damage - Smart repair



Damage 3: Side panel - rear right side: Side panel - Dent / paintcoat damage - Smart repair



Damage 4: Door - rear right side: Door - Scratch(es) - Smart repair



Damage 4: Door - rear right side: Door - Scratch(es) - Smart repair



Damage 4: Door - rear right side: Door - Scratch(es) - Smart repair



Damage 5: 2nd wheel set: 2 alloy rims - Scratched - Loss in value



Damage 5: 2nd wheel set: 2 alloy rims - Scratched - Loss in value



Damage 5: 2nd wheel set: 2 alloy rims - Scratched - Loss in value



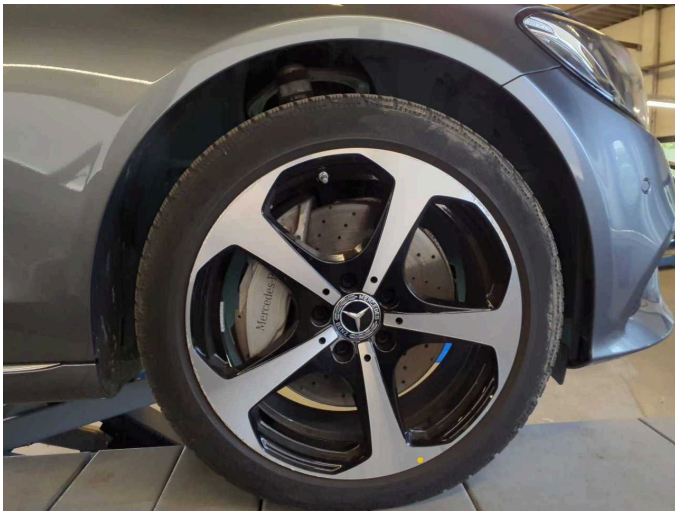
Damage 5: 2nd wheel set: 2 alloy rims - Scratched - Loss in value



Damage 5: 2nd wheel set: 2 alloy rims - Scratched - Loss in value



Damage 5: 2nd wheel set: 2 alloy rims - Scratched - Loss in value



Wear and tear 2: Wheel / tyres: Alloy rim - front right side - Scratched - No deduction



Wear and tear 2: Wheel / tyres: Alloy rim - front right side - Scratched - No deduction



Wear and tear 2: Wheel / tyres: Alloy rim - front right side - Scratched - No deduction



Wear and tear 2: Wheel / tyres: Alloy rim - front right side - Scratched - No deduction



Wartungshistorie

(gemäß Auftraggeber Informationen)

Fahrgestellnummer: W1K2052531G059194

Hersteller / Modell: MERCEDES-BENZ MB C 300 e T 9G-TRONIC

Datum	KM-Stand	Beschreibung
05.11.2024	86.196	Regelwartungsdienst
18.10.2023	65.094	AU
16.10.2023	65.094	Regelwartungsdienst
10.10.2022	38.620	Regelwartungsdienst
26.10.2021	17.524	Kleine Inspektion; Kleine Inspektion; Kleine Inspektion